

THE KENDRICKS



Trail End was the home of John B. Kendrick (1857-1933), former Wyoming Governor and United States Senator. Born in Texas, Kendrick was orphaned at an early age and raised by relatives until he went out on his own at age fifteen. He came to Wyoming Territory for the first time in 1879, as a trail rider on a cattle drive.

In 1891, at the age of thirty-four, Kendrick married eighteen-year-old Eula Wulfen (1872-1971) in Greeley, Colorado. For the next eighteen years, they lived on the OW Ranch in southeastern Montana. This property was the start of what



later became the Kendrick Cattle Company, a 210,000-acre collection of cattle ranches in northern Wyoming and southern Montana (the ranchlands were sold by the family in 1989).



While at the OW Ranch, the family's size doubled. Rosa-May (1897-1979) and Manville (1900-1992) were both born

in Sheridan, but lived their early lives at the ranch. There they were home-schooled by their mother until they moved to Sheridan in 1908. While Manville eventually took over management of the ranches, Rosa-May married an Army officer and spent most of her adult life away from Wyoming.

Photos courtesy of the Manville Kendrick Collection, Trail End State Historic Site

TRAIL END HISTORY

Construction began on Trail End in 1908. After it was finished in 1913, the family had only a short time to enjoy their new home. John Kendrick was elected Governor of Wyoming in 1914 and the family moved to Cheyenne. Two years later, he was chosen to serve in the United States Senate. Until his death in 1933, Trail End was used primarily as a summer home.

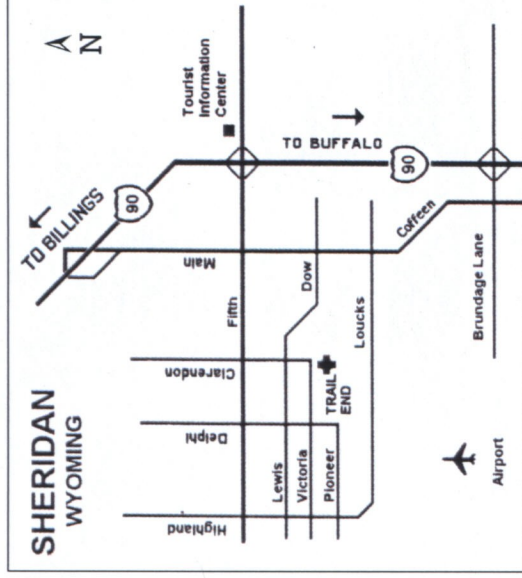
From 1933 to 1961, Eula Kendrick lived at Trail End with Manville and his family. After Eula's death, the others moved out and the house stood empty for seven years. In 1968, when it was about to be torn down, the Sheridan County Historical Society purchased Trail End. They opened the home to the public as a community museum. Ownership was transferred to the State of Wyoming in 1982.

PLEASE REMEMBER

- ◆ Help us preserve the home for the future – please try not to touch!
- ◆ Stay behind any rope or Plexiglass barriers.
- ◆ Children 17 and under must be accompanied by an adult.
- ◆ Parents must keep small children in hand and under control at all times.
- ◆ Flash photography is not permitted.
- ◆ If a door is closed, please leave it closed.
- ◆ Visitors with mobility concerns are welcome to use the elevator to access all four floors.
- ◆ Public restrooms and a drinking fountain are located on the basement level.
- ◆ While food and drink are not allowed in the house, picnics are allowed on the grounds. Please remove all trash and bottles.
- ◆ Smoking is not permitted in the house or on the porches.

Trail End State Historic Site

400 Clarendon Avenue
Sheridan, Wyoming 82801
(307) 674-4589
trailend@state.wy.us
www.trailend.org



SUMMER HOURS

(June – August)

9 a.m. to 6 p.m. daily

Open Memorial Day, Independence Day and Labor Day (please call for hours)

WINTER HOURS

(September – May)

Please call for current schedule

PLEASE NOTE

Trail End is set up for self-guided tours. Guided group tours (including school groups and bus tours) are available by appointment only and must be scheduled at least three weeks in advance.

♻️ Please Recycle or return to park for reuse

Trail End Historic Site



From its authentically furnished rooms to its finely manicured lawns, Trail End displays an elegantly different aspect of Wyoming's rich and colorful history.

ARTS. PARKS. HISTORY.

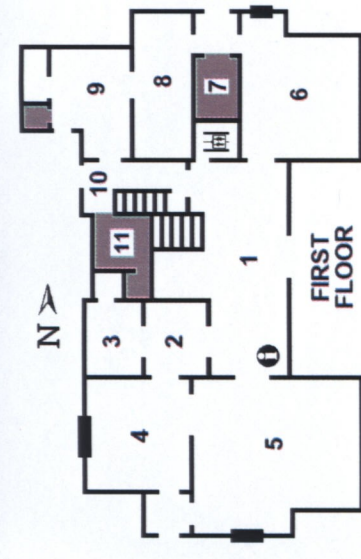
Wyoming State Parks, Historic Sites & Trails

Trail End State Historic Site is administered by the Division of State Parks, Historic Sites and Trails, Wyoming Department of State Parks and Cultural Resources.
<http://wyoparks.state.wy.us/>

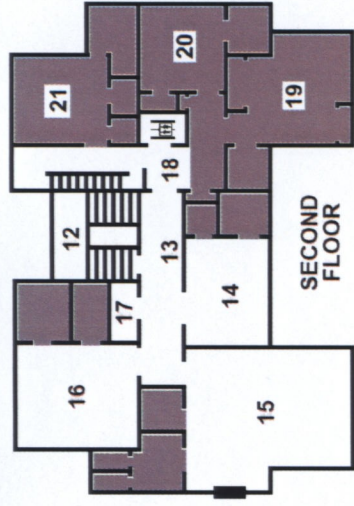
SELF-GUIDED TOUR HIGHLIGHTS

SHADED AREAS ARE NOT OPEN TO THE PUBLIC

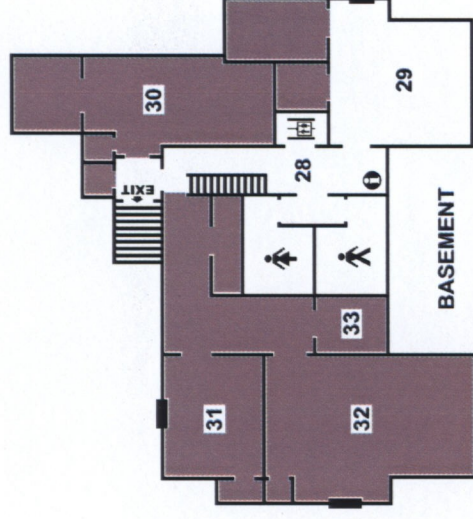
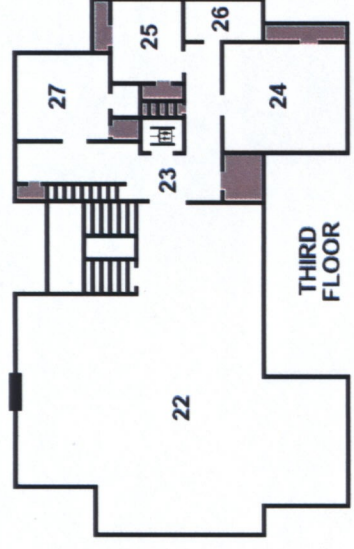
THE GROUNDS



- 1 – **Foyer** Hand-painted ceiling panels, oak woodwork, liquor cabinet, elevator
- 2 – **Cloak Room** Intercom, coat closets
- 3 – **Powder Room** Porcelain double pedestal sink, German silver fixtures, original plumbing
- 4 – **Library** Quarter-sawn Golden Oak woodwork, stained glass windows, music box
- 5 – **Drawing Room** Silk wall coverings, piano-finish Honduran mahogany woodwork,
- 6 – **Dining Room** Italian marble fireplace, rose-silver chandelier
- 7 – **Walk-In Vault** Combination safe, locking interior cabinets
- 8 – **Butler's Pantry** Butternut cabinets and drawers, German silver sink, icebox
- 9 – **Kitchen** Wood/coal cookstove, porcelain sink, built-in spice cabinet, pantry closet
- 10 – **Back Hallway** Intercom, fusebox, firehose, annunciator, vault alarm, servants' stairs
- 11 – **Maids' Breakfast Room** Storage areas, half-bath, oval stained glass window
- 12 – **Landing** Replication wallpaper, stained glass windows, hand-painted ceiling canvas
- 13 – **Portrait Gallery** Kendrick family friends and relatives



- 14 – **Manville's Bedroom** Navajo-style wall paintings, Arts & Crafts light fixtures
- 15 – **Master Bedroom** Original Circassian walnut furnishings, redecorated in the 1930s
- 16 – **Rosa-Maye's Bedroom** Hand-tinted walls, Victorian-style lights, Berkey & Gay furnishings
- 17 – **Maid's Closet** Hoses and nozzles for built-in stationary vacuum system, fusebox
- 18 – **Guest Wing Elevator**, servants' stairs, enclosed west balcony
- 19-21 – **Guest Bedrooms** currently staff offices
- 22 – **Ballroom** Tiffany-styled chandeliers, musicians' loft
- 23 – **Staff Hall** Elevator, intercom, laundry chute, dumbwaiter, firehose, servants' stairs
- 24 – **Cook's Bedroom** Built-in sink, cupboards under the eaves
- 25 – **Maid's Bedroom** Stained glass window, built-in sink with mirror
- 26 – **Staff Bath** Half-arch windows, Vermont marble trim
- 27 – **Housekeeper's Bedroom** "Please Touch" exhibits, photo display
- 28 – **Basement Hallway** Elevator, public restrooms, drinking fountain, brochure rack



- 29 – **Laundry Room** Stationary vacuum cleaner motor, ranch exhibit, laundry facilities
- 30 – **Furnace Room** Twin boilers, incinerator, coal bin
- 31 – **Chauffeur's Bedroom** Fireplace, private bath
- 32 – **Billiard Room** Fireplace, cedar-lined closets
- 33 – **Paint Closet** Storage shelves

In case of emergency, do not use elevator.
Take stairs to nearest exit.

Trail End's 3.8 acres of groomed grounds contain a sunken rose garden, English sundial, fruit orchard, lawn tennis court (north of the Carriage House), circular back driveway with original clothesline/drying yard, and a wide variety of trees and bushes, both native and exotic.

Finished in 1910, the Carriage House served as the Kendricks' home during construction of the mansion. In 1979, the structure was leased to the Sheridan Civic Theatre Guild, which converted the space into an 88-seat community theater. Phone (307) 672-9886 for information on upcoming Carriage House events.

FACTS & FIGURES

- ◆ Trail End is the only known example of Flemish Revival architecture in Wyoming
- ◆ Most of the items in Trail End today are original to the house
- ◆ Trail End has twelve full or partial bathrooms
- ◆ Trail End's architect was Glenn Charles McAlister of Billings, Montana
- ◆ Trail End cost \$164,000 to build; a normal-sized home in 1913 cost about \$4,000
- ◆ Building materials were shipped to Sheridan by rail from all over the United States and hauled up the hill by horse-drawn wagons:
 - Limestone from Indiana
 - Roofing tile from Missouri
 - Brick from Kansas
 - Granite from Montana
 - Woodwork from Michigan
 - Window screens from Maine
 - Stained glass from New York
 - Marble from Vermont
- ◆ In the winter, Trail End's twin boilers could burn up to a ton of coal a day