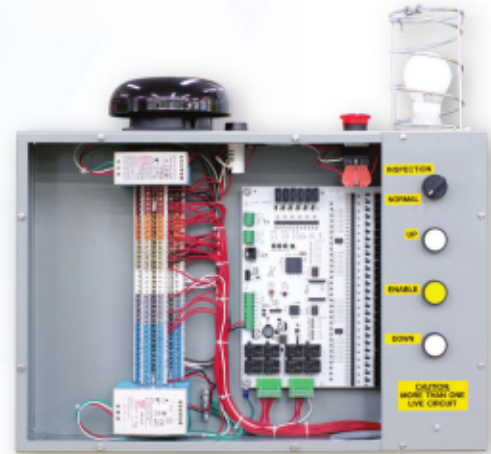
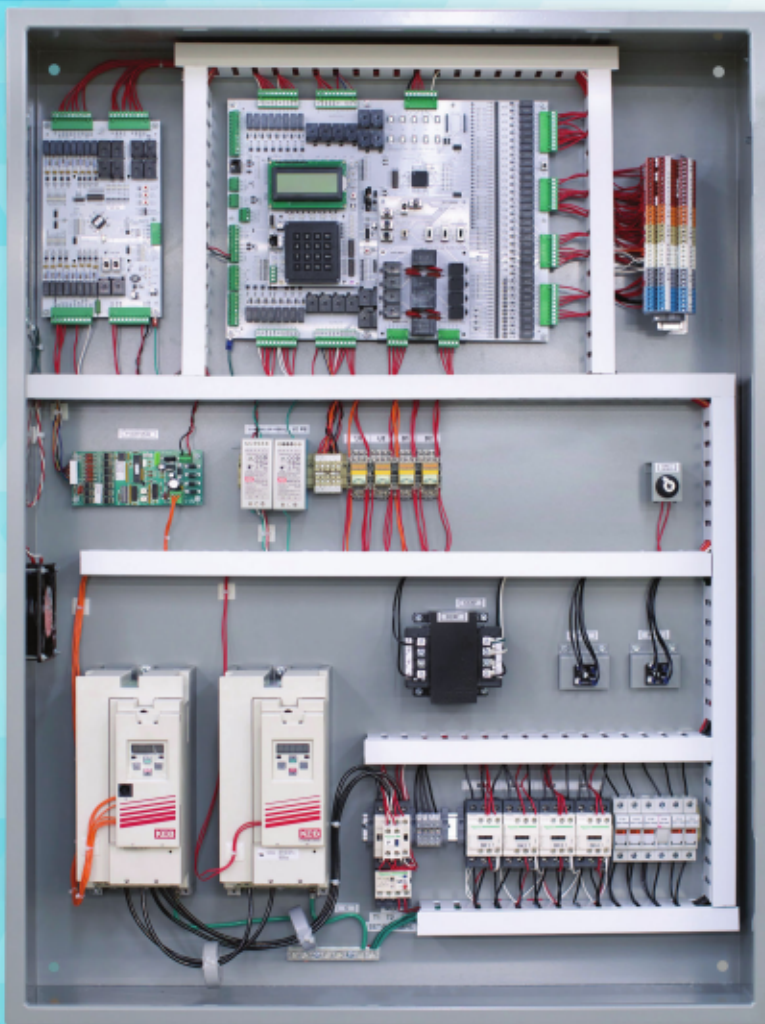


AC Traction Controller with Serial I/O



**WHAT'S
NEW**

- ▶ Compact, Lighter Weight Main Controller
- ▶ Single Enclosure for Car Top Inspection/
Terminal Junction Box Included
- ▶ Reduced Wire Count in Travel Cable
- ▶ Terminal Name to Wire Matched Travel Cable
- ▶ Color Matched Terminals, Diagrams and
Travel Cable
- ▶ Single CPU for Entire System
- ▶ Remote Adjustment Capability Via
Smartphone/Tablet

AC Traction Controller with Serial I/O

SPECIFICATIONS:

- Features a Microprocessor-based CPU with Serial Connections
- For Geared, Gearless & MRL Applications
- Max Speed: 1,000 FPM
- Capacity: As Required
- Max Landings: 64
- Max Cars in Group: 8
- Code: ASME A17.1 & ASME A17.5
- Certification: UL/cUL

STANDARD FEATURES:

- Serial Communication via CAN Bus
- EZ-Install with simplified field wiring
- ELGO Absolute Positioning
- Real-time Group Dispatching & Homing
- Program Updates via USB Flash Drive
- Field Adjustable Settings w/Keypad
- Non-Proprietary Software
- LCD Display w/Status Screens
- LED Status Indicators
- Door Nudging & ICU Operation
- NEMA 1 Enclosure

OPTIONAL FEATURES:

- Wi-Fi Diagnostics via Web Interface
- Remote Monitoring Capability
- Lift-Net® Compatible
- Hospital / EMT Service
- SAPB, SBC, CPPB, Call & Send Operation
- Card Readers / Security
- Car-to-Lobby / Commandeering
- Emergency Power Operation
- Emergency Rescue
- Harmonic Filter
- Isolation Transformer
- Regenerative Drives
- Digital PI Interface
- Staggered or Walkthrough Openings
- Manual or Power Freight Doors
- NEMA 12, 4, 4X, 7, or 9 Enclosures