



800-899-2444 · Fax 603-647-6770

DATE _____
 CUSTOMER _____
 ORDERED BY _____
 PHONE _____ FAX _____
 P.O. NUMBER _____
 JOB NAME _____
 REQUEST DATE _____

OFFICE USE:

PICK TICKET # _____

SHIP DATE _____

STYLE: _____

COLOR #: _____

COLOR NAME: _____

ISLAND

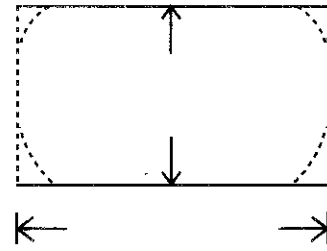
C.C. or
E.E. _____

C.C. or
E.E. _____

COST \$

Bullnose _____
 Finished End _____

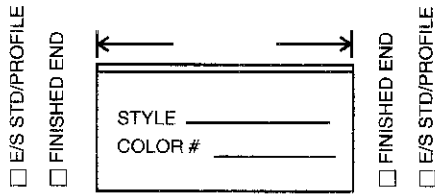
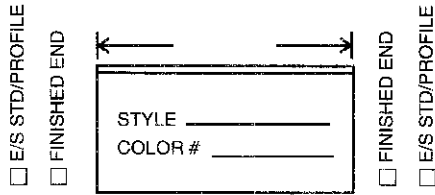
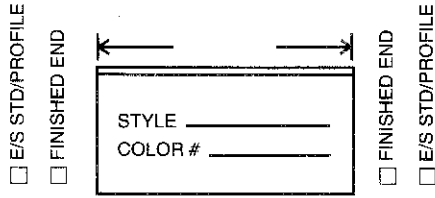
Bullnose _____
 Finished End _____



C.C.= Clip Corner
E.E.= Eased Edge

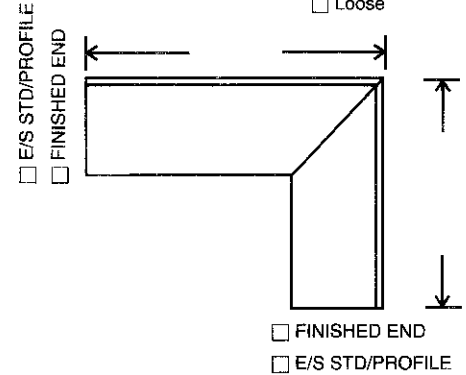
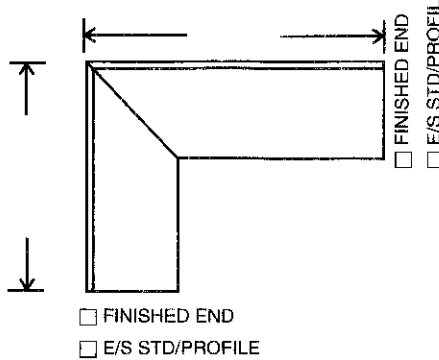
C.C. or
E.E. _____

C.C. or
E.E. _____



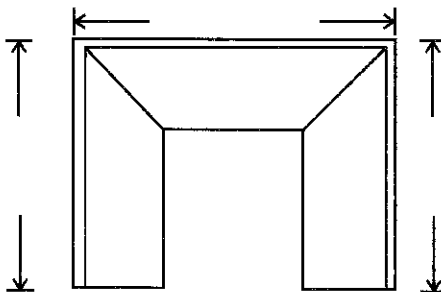
Assemble
 Loose

Assemble
 Loose



Assemble
 Loose

Assemble
 Loose



C.C. or
E.E. _____

C.C. or
E.E. _____

Finished End
 Bullnose _____

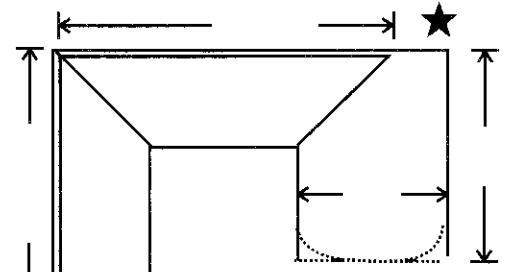
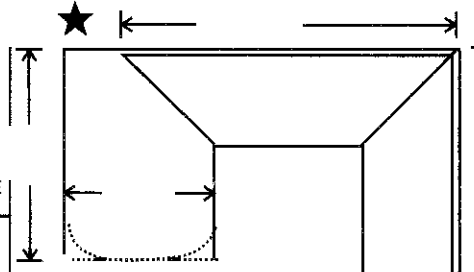
C.C. or
E.E. _____

C.C. or
E.E. _____

Finished End
 Bullnose _____

Assemble
 Loose

Assemble
 Loose



C.C. or
E.E. _____

C.C. or
E.E. _____

Finished End
 Bullnose _____

C.C. or
E.E. _____

C.C. or
E.E. _____

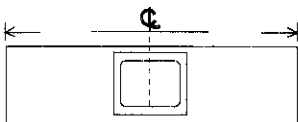
Finished End
 Bullnose _____

★ 27" Island - 1 3/4" Overhang
 ★ 36" Island - 10 3/4" Overhang

IMPORTANT

1. PROFILE E/S MUST SHIP LOOSE; STD, E/S WILL BE SHIPPED LOOSE UNLESS OTHERWISE SPECIFIED.
2. ADDITIONAL EASED EDGES, CLIPPED CORNERS & ANGLE END BASES MAY BE DRAWN IN WHERE NEEDED.
3. INCLUDE SPECS FOR ALL ANGLE END BASES.

Sink cut out: (Standard Stainless Steel)



____ 25" x 22" Single Bowl
 ____ 33" x 22" Double Bowl

NOTES / SPECIAL INSTRUCTIONS:

