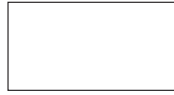


# Series: Baja Specifications

## Glazed Porcelain Tiles

*Badja is defined as the starting point - the first stage of a journey. This USA glazed porcelain tile series provides a value-based alternative for your residential and light commercial projects, while maintaining the versatile beauty and quality of Italian design. Where will you venture first with your kitchen or bath project?*

### SIZES



11<sup>3/4"</sup> x 23<sup>5/8"</sup> - 30x60 cm

**THICKNESS**  $\frac{3}{8}$  8 mm

**FINISH** matte



Compliant with standards ANSI A137.1-2022

## Stocked

### COLORS



**V3**  
MODERATE  
VARIATION



WHITE VEIN



TAUPE



**V2**  
SLIGHT  
VARIATIO  
N



LIGHT



GRAY

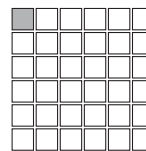


**V2**  
SLIGHT  
VARIATIO  
N



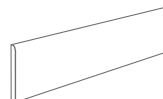
CARRARA

### MOSAICS & DECORS



**MOSAIC \***  
11<sup>3/4"</sup> x 11<sup>3/4"</sup> - 30x30 cm

### COORDINATING TRIMS



**Bullnose**  
3" x 24" - 7.2x60 cm

\*Note - Check with your sales representative for proper use and application of this product.

### Specifications\*

All field tile & mosaics are sold in full cartons. Trims, liners and accessory pieces are sold per piece.

Baja Glazed Porcelain - 5 Colors

12" x 24" Matte Porcelain Tile

12" x 24" S/F Carton - 15.50

12" x 24" Pieces per carton - 8

2" x 2" Coordinating Matte Porcelain Mosaic

2" x 2" S/F Carton - 4.84 Matte Porcelain Mosaic

2" x 2" Pieces per carton - 5

Coordinating 3" x 24" Bullnose Honed **sold per piece**

Be sure to bring this to your distributor, Legacy Tile as you discuss your design.

## Special Order



**V2**  
SLIGHT  
VARIATIO  
N



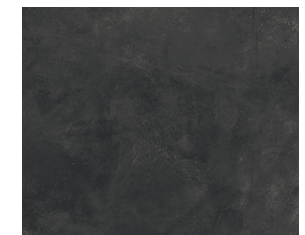
ROAD WHITE



ROAD IVORY



ROAD GRAY



ROAD BLACK

COLORED BODY PORCELAIN TILE

# Series: Baja Technical Specifications

## Glazed Porcelain Tiles



Compliant with standards ANSI A137.1-2022



**SIZE**  
11 3/4" x 23 5/8" - 30 x 60 cm

**THICKNESS**  
8 mm

**FINISH**  
matte

**V2 SLIGHT VARIATION**  
Clearly distinguishable differences in texture and/or pattern within similar colors.

**V3 MODERATE VARIATION**  
While the colors and/or texture present on a single piece of tile will be indicative of the colors and/or texture to be expected on the other tiles, the amount of colors and/or texture on each piece may vary significantly. It is recommended that the range be viewed before selection.

**FIELD TILES**  
Available in all colors

| Commercial size (in) | Nominal size (in) | Thickness (mm) | Finish | Rectified edge |
|----------------------|-------------------|----------------|--------|----------------|
| 12" x 24"            | 11 3/4" x 23 5/8" | 8 mm           | Matte  | -              |

**MOSAICS AND COORDINATING TRIMS**  
Available in all colors


| Commercial size (in) | Nominal size (in) | Thickness (mm) | Finish |   |
|----------------------|-------------------|----------------|--------|---|
| Mosaic               | 11 3/4" x 11 3/4" | 8 mm           | Matte  | Please refer to caliber chart for work sizes. Close joints are not recommended. |
| Bullnose 3" x 24"    | 2 7/8" x 23 5/8"  | 8 mm           | Matte  |   |

### PERFORMANCE & FEATURES


**REGULARITY CHARACTERISTICS**

|   | PROPERTY  | ASTM TEST METHOD | PORCELAIN TILE SPECIFICATION     |                               |   |   |           |
|---|---|------------------|----------------------------------|-------------------------------|---|---|-----------|
|   |   |                  | Calibrated                       |                               | Rectified   |   |           |
|   |   |                  | Minimum                          | Maximum                       | Minimum   | Maximum   |           |
|  | Nominal Size  | ASTM C499        | -3.00%                           | 3.00%                         | -3.00%  | 2.00%   | Compliant |
|   | Caliber Range (Variation from average facial dimension of sample) |                  | -0.50% or -0.08 in (-2.0 mm) (*) | 0.50% or 0.08 in (2.0 mm) (*) | -0.25% or -0.03 in (-0.8 mm) (*)  | 0.25% or 0.03 in (0.8 mm) (*)   | Compliant |
|   | Thickness (1)   |                  | N/A                              | Range: 0.40 in (1.02 mm)      | N/A   | Range: 0.40 in (1.02 mm)  | Compliant |
|  | Wedging   | ASTM C502        | -0.50% or -0.08 in (-2.0 mm) (*) | 0.50% or 0.08 in (2.0 mm) (*) | -0.25% or -0.03 in (-0.8 mm) (*)  | 0.25% or 0.03 in (0.8 mm) (*)   | Compliant |
|   | Warpage Edge  | ASTM C485        | -0.75% or -0.09 in (-2.3 mm) (*) | 0.75% or 0.09 in (2.3 mm) (*) | -0.40% or -0.05 in (-1.3 mm) <sup>(2)</sup> or -1.8 mm <sup>(3)</sup> (*) | 0.40% or 0.05 in (1.3 mm) <sup>(2)</sup> or 1.8 mm <sup>(3)</sup> (*) | Compliant |
|   | Warpage Diagonal  |                  | -0.50% or -0.08 in (-2.0 mm) (*) | 0.50% or 0.08 in (2.0 mm) (*) | -0.40% or -0.07 in (-1.8 mm) (*)  | 0.40% or 0.07 in (1.8 mm) (*)   | Compliant |

**STRUCTURAL CHARACTERISTICS**

|   | PROPERTY         | ASTM TEST METHOD | ALL PORCELAIN TILES |        |
|---|------------------|------------------|---------------------|--------|
|  | Water Absorption | ASTM C373        | ≤ 0.5%              | ≤ 0.5% |


**BULK MECHANICAL CHARACTERISTICS**

|   |                   |           |   |           |
|---|-------------------|-----------|---|-----------|
|  | Breaking Strength | ASTM C648 | Average ≥ 250 lbf. (1.11 kN)<br>Individual ≥ 225 lbf. (1.00 kN) | Compliant |
|---|-------------------|-----------|---|-----------|



**SURFACE MECHANICAL CHARACTERISTICS**

|   |                             |            |             |          |
|---|-----------------------------|------------|-------------|----------|
|  | Surface Abrasion Resistance | ASTM C1027 | As Reported | Class IV |
|---|-----------------------------|------------|-------------|----------|


**THERMAL AND IGROMETRIC CHARACTERISTICS**

|   |                                   |            |             |           |
|---|-----------------------------------|------------|-------------|-----------|
|  | Resistance to Freeze/Thaw Cycling | ASTM C1026 | As Reported | Resistant |
|---|-----------------------------------|------------|-------------|-----------|

**CHEMICAL CHARACTERISTICS**

|   |                     |            |             |            |
|---|---------------------|------------|-------------|------------|
|  | Chemical Resistance | ASTM C650  | As Reported | Unaffected |
|  | Stain Resistance    | ASTM C1378 | As Reported | Unaffected |

**SAFETY CHARACTERISTICS**

|   |                                 |      |   |            |
|---|---------------------------------|------|---|------------|
|  | Dynamic coefficient of friction | DCOF | Requires a minimum value of 0.42 for commercial areas that are likely to be wet | > 0.42 Wet |
|---|---------------------------------|------|---|------------|

(\*) Whichever is less  
(1) May not apply to textured surfaces or tiles with uneven back patterns.  
(2) Whichever is less, for tiles up to 24"x24" (610 mm x 610 mm).  
(3) Applies to tiles larger than 24"x24" (610 mm x 610 mm).





## Series: Stocked Baja

