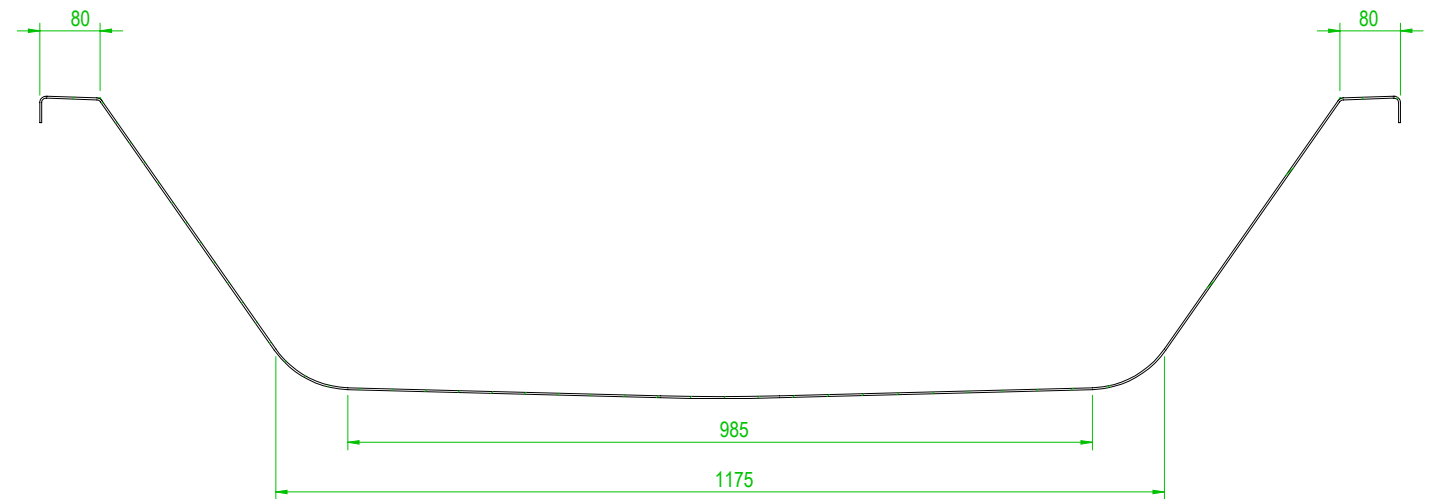
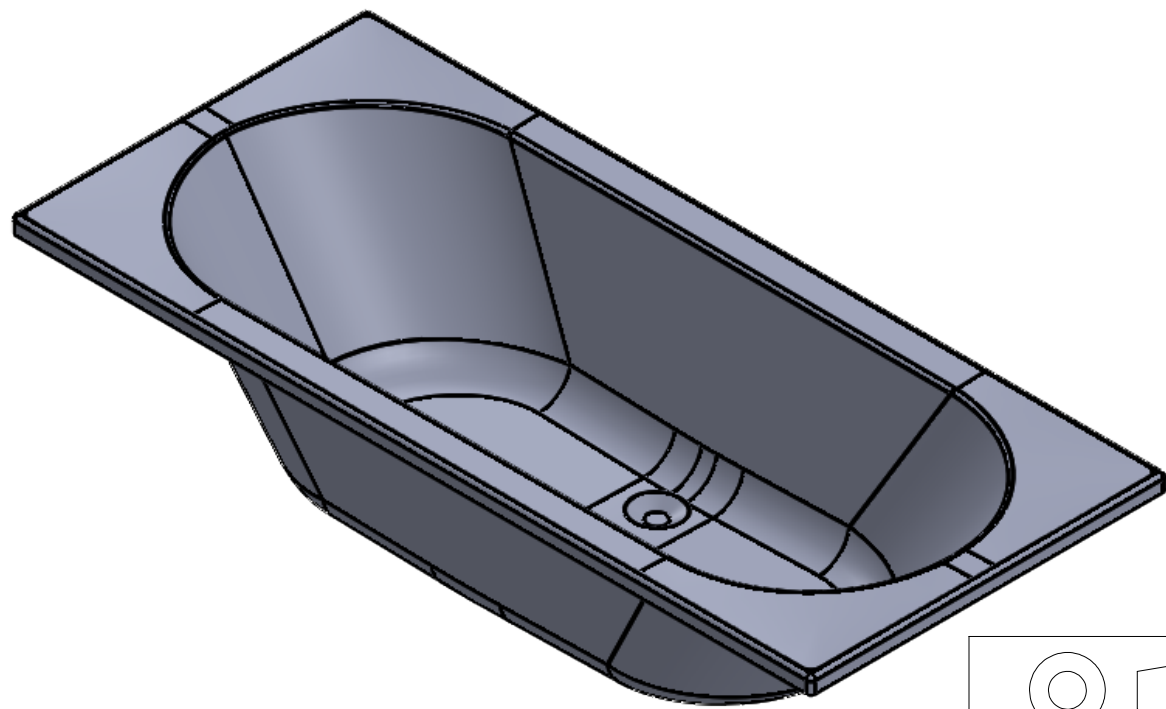
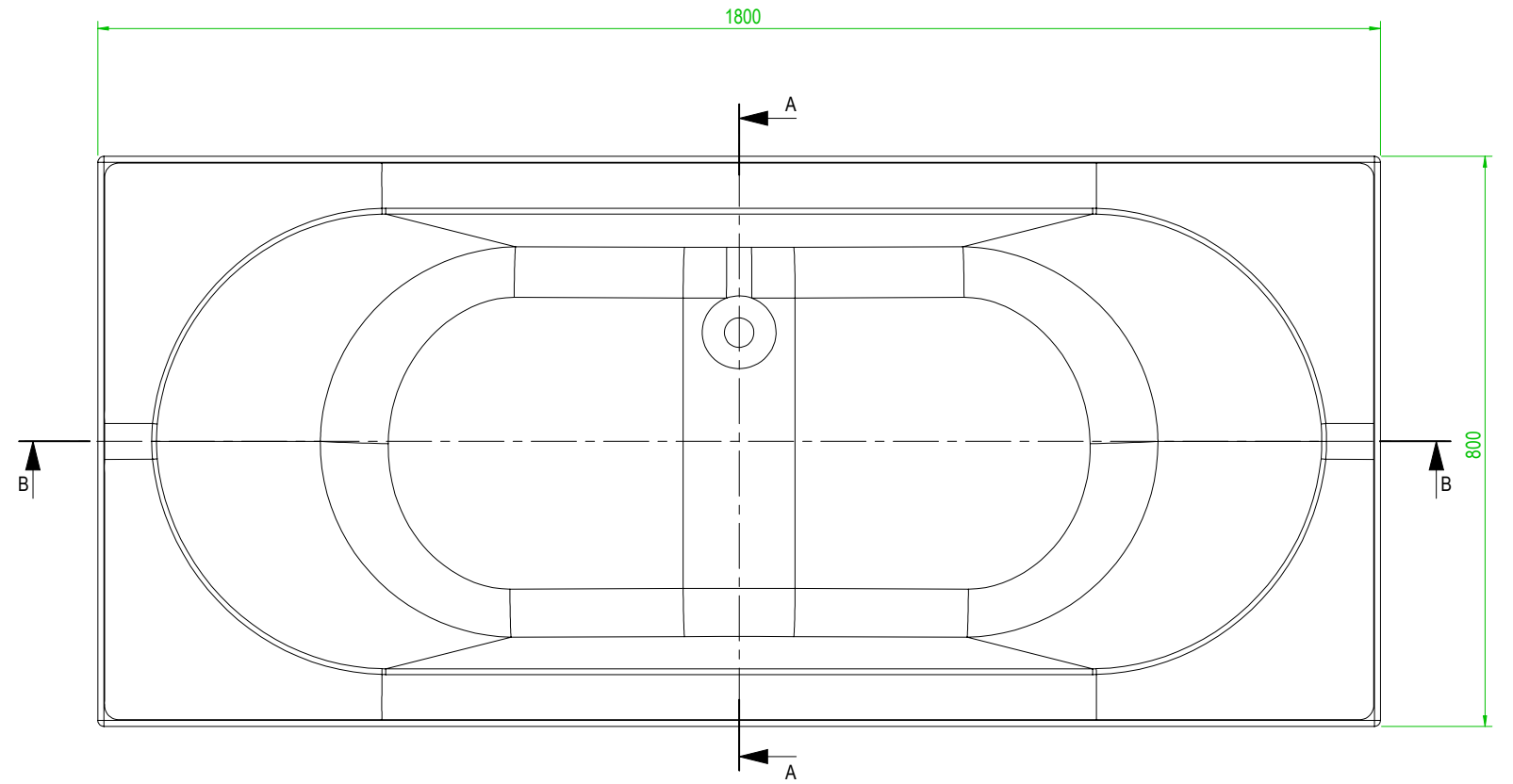


SECTION A-A



SECTION B-B

			NAME		DATE	CONTRACT:	FUNCTION:	HOURS:	CUSTOMER:	MACHINE TYPE:		MACHINE SIZE:	
DO NOT SCALE IF IN DOUBT ASK			DRAWN							Armour			
THIS DRAWING IS THE PROPERTY OF ARMOUR PLASTICS LTD. COPYRIGHT IS RESERVED BY THEM AND THE DRAWING IS ISSUED ON THE CONDITION THAT IT MUST NOT BE COPIED, REPRODUCED, RETAINED OR DISCLOSED TO UNAUTHORISED PERSONS, EITHER WHOLLY OR IN PART WITHOUT THE CONSENT IN WRITING OF ARMOUR PLASTICS LTD.		APPV'D				ALL DIMENSIONS ARE IN MILLIMETRES TOLERANCES ON CASTINGS, UNMACHINED PARTS AND FABRICATIONS:- DIMENSIONS 0-1000: ± 1.0 DIMENSIONS 1000+: ± 2.0		MATERIAL:		TITLE:		CARMEN 1800 x 800 Double Ended Bath	
		ARMOUR ENGINEERING 1 ALSTON ROAD PATTINSON NORTH INDUSTRIAL ESTATE WASHINGTON TYNE & WEAR NE38 8QH www.armour-engineering.com				TOLERANCES ON MACHINED DIMENSIONS:- WHOLE UNITS ± 0.5 ONE DEC' PLACE ± 0.1 TWO DEC' PLACE ± 0.03 ANGLES ± 0.25		WEIGHT:		FINISH:		SCALE: 1:10 DRAWING NUMBER: REV:	