

DREW PALUMBO

SAMPLE PORTFOLIO

Full Porfolio Presentation Available Upon Request

ABOUT ME

WEBSITES

www.drewpalumbo.com

www.fcinc.org

EMAIL

Drewp3D@gmail.com

PHONE

267. 640. 5908



PROFILE

- I am an industrial design consultant with 10 years of experience in the field.
- I specialize in generating 3D and 2D media assets. I currently perform contract work and freelance for a variety of large corporations, small companies, and individual inventors.
- This includes complex 3d modeling/photo-realistic 3d renderings for consumer products, retail environments, trade show booths, exhibits, meetings, promotional marketing events.
- I have extensive project management experience in developing new product lines / start-up company consulting. I take my clients from ideation to prototyping, as well as branding, pitching, 3d engineering, and prepare files for manufacturing.
- My experience with various fabrication techniques allows me to streamline designs, so that they can be optimally manufactured or fabricated.

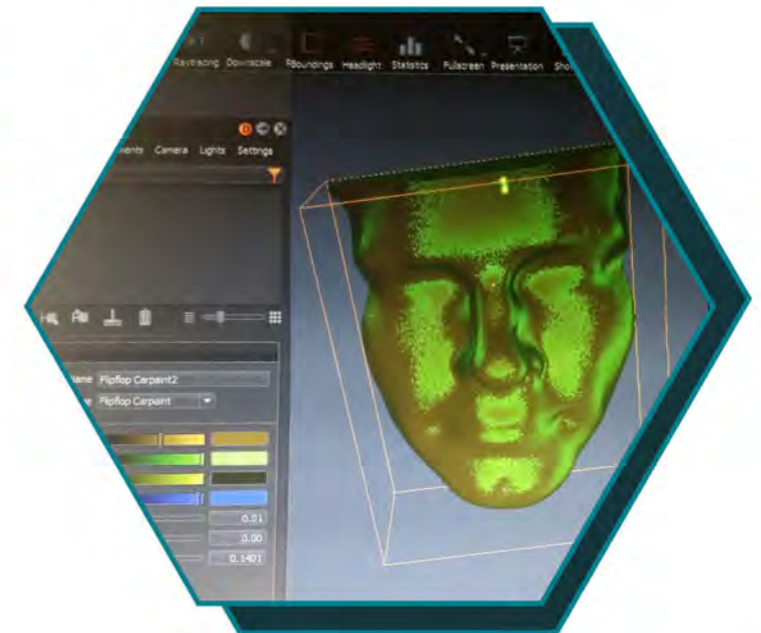


TABLE OF CONTENTS

PRODUCT DESIGN / DEVELOPMENT

Industrial design work relating to both Consumer and Medical Product Development / Manufacturing

GRAPHIC DESIGN

Branding, Logo design, Style-guide Creations, and Art Direction samples from previous work

INTELLECTUAL PROPERTY

Granted US Patents to date, Patent Illustrations work, and basic I.P. Protection asset sample work

MEDICAL DEVICE DESIGN

Industrial design work relating to both Consumer and Medical Product Development / Manufacturing

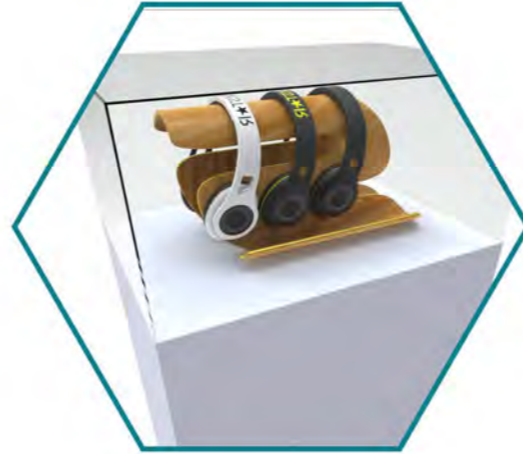
ENVIRONMENTAL DESIGN

Industrial and Interior Design work relating to Architecture, Corporate Interiors, Retail Store and Restaurant Design

INTERACTIVE DISPLAYS

Design, engineering, and custom fabrication work

RESUME

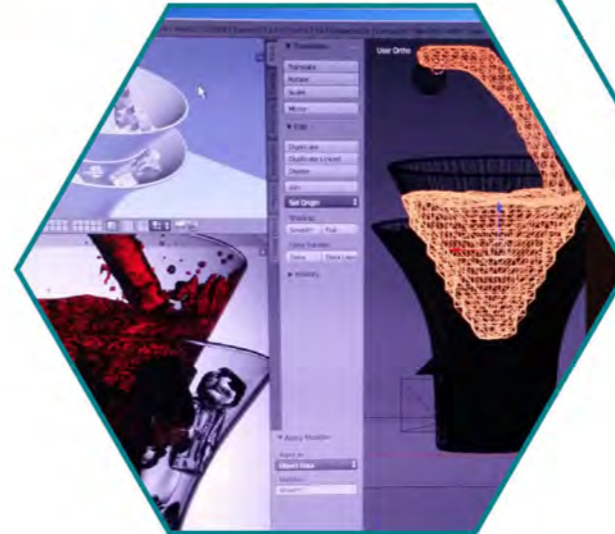
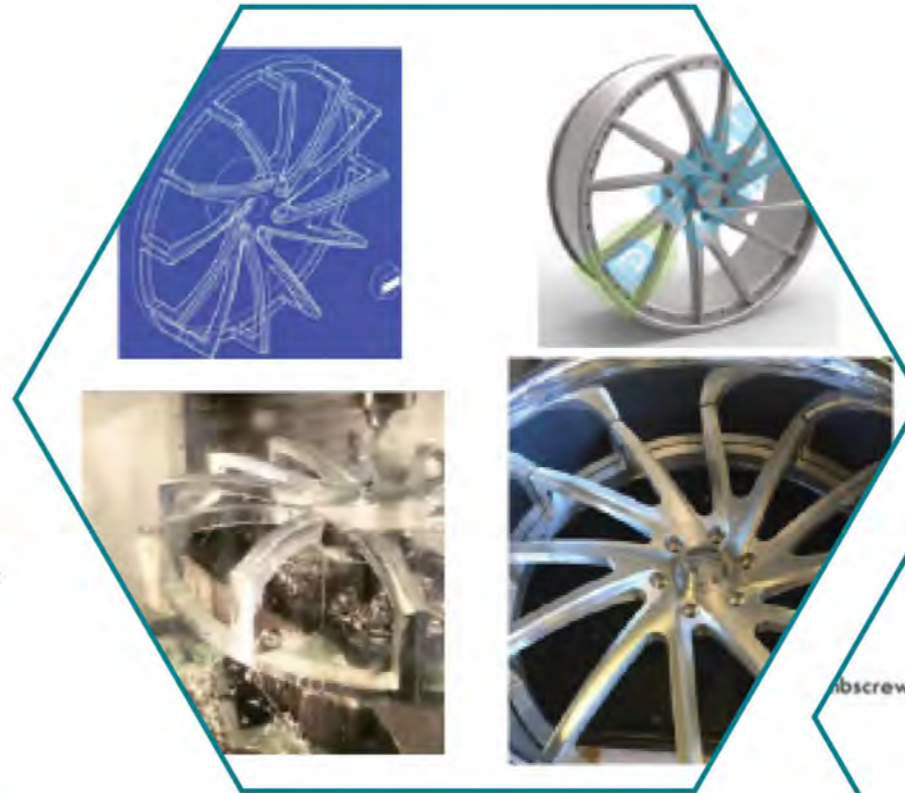


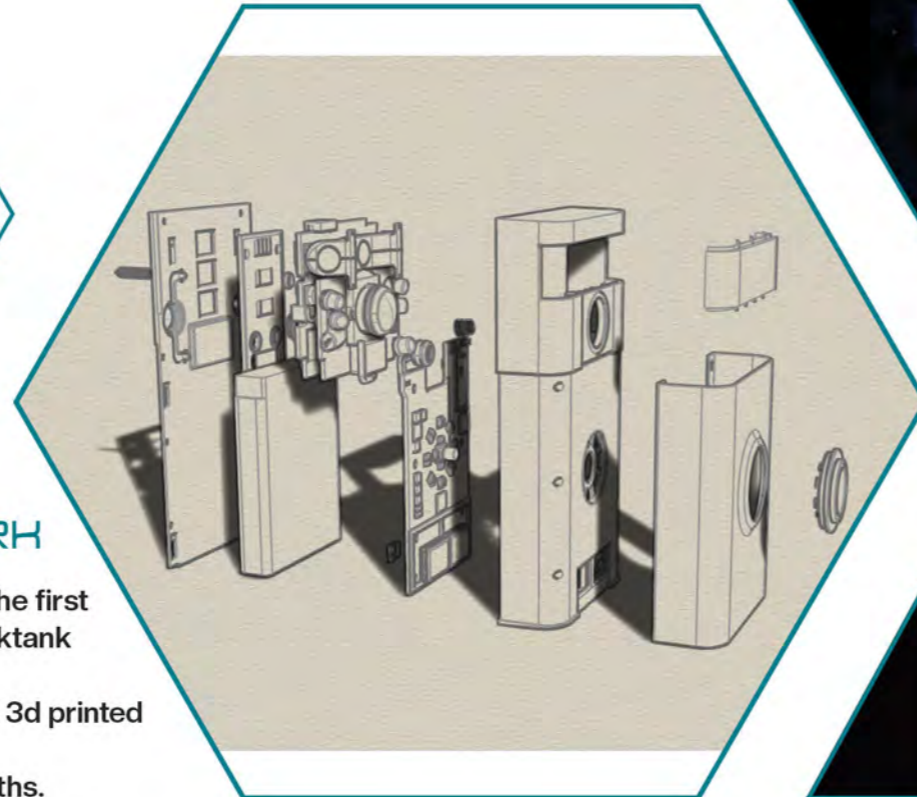
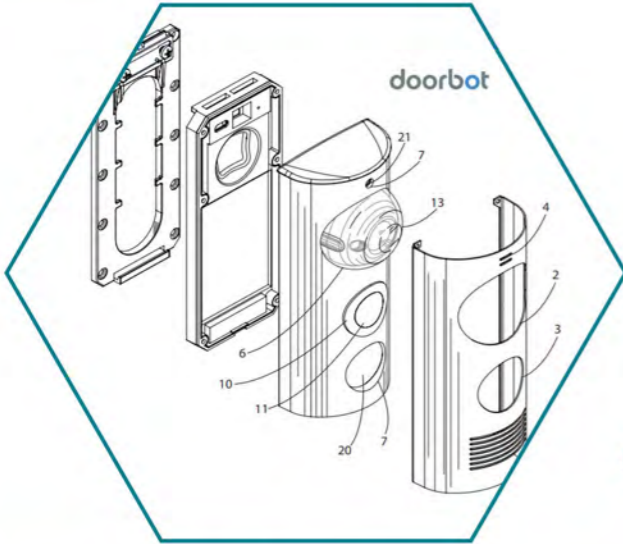
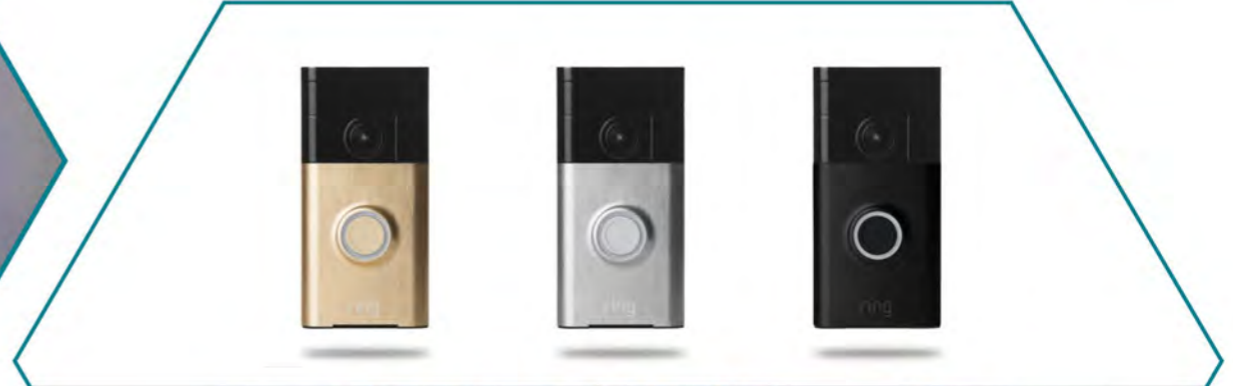
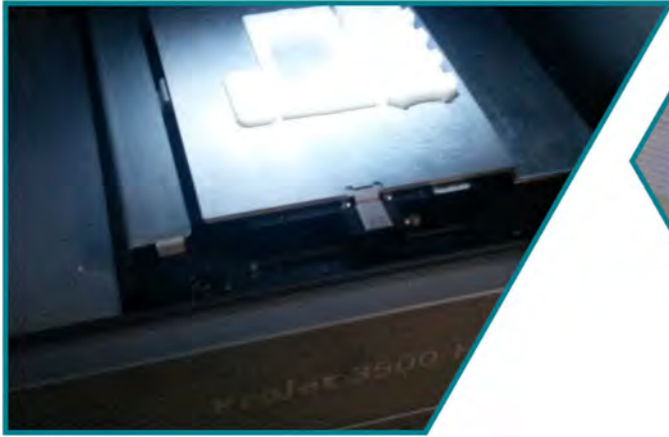


PRODUCT DESIGN / DEVELOPEMENT

CONSUMER PRODUCTS AND PACKAGING

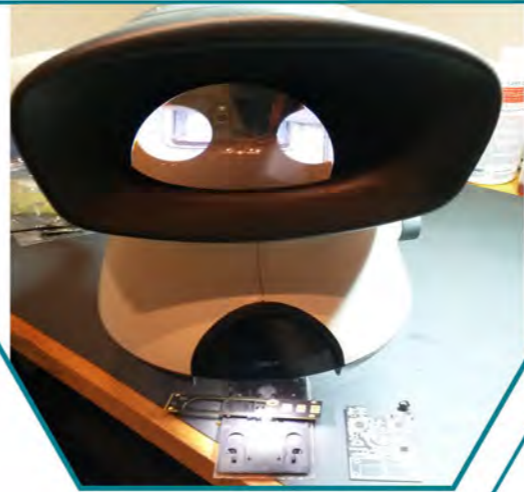
- Manufacturing companies contract me to transform their client's parts and assemblies into more efficient designs.
- One of my largest clients manufactures food and beverage containers.
- I prototyped key parts during the creation of Ring video doorbell.
- I have a passion for assisting start-ups and have been featured on several television segments during my career.



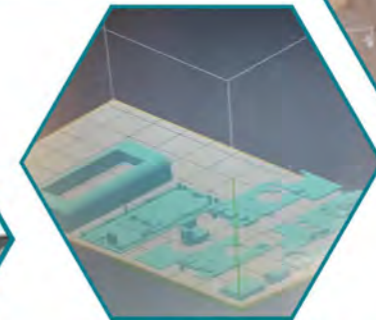


RING VIDEO DOORBELL WORK

- I was contracted to prototype and develop the first Ring Video Doorbell. Based off the failed Sharktank product "Doorbot".
- I managed a grass roots prototyping lab and 3d printed parts for manufacturing signoffs.
- I also created packaging and tradeshow booths.



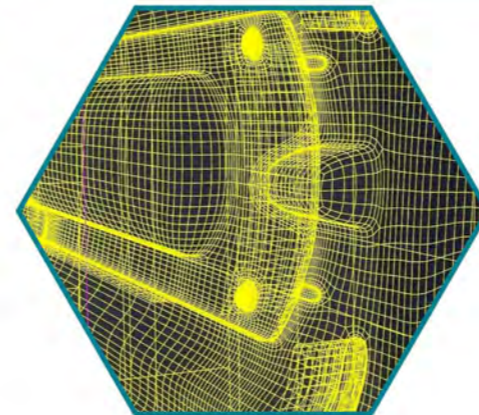
BUY NOW >



RING WORK CONTINUED

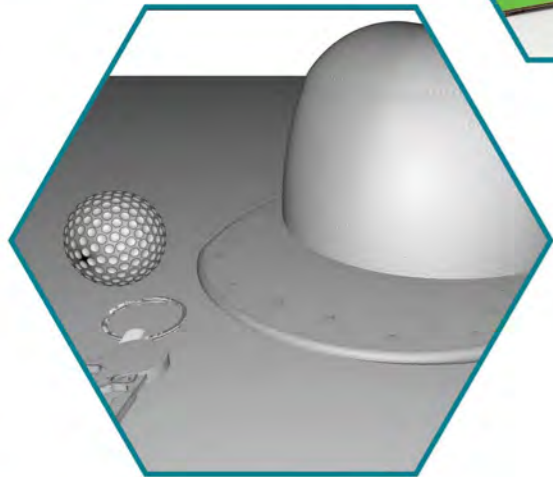
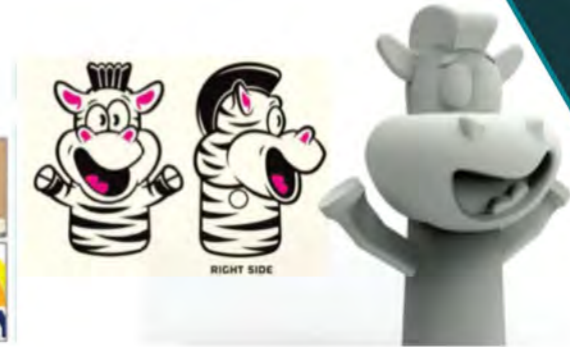
- I engineered and tested critical parts for the new product launch. This included inventing, sourcing components, 3d CAD modeling, and technical support for the other engineers on the hardware team.
- I was also featured in a Ring commercial at the iconic "Ferris Bueller" house in Long Beach, CA.
- I prototyped the latest version (3) as well.





VARIOUS
PRODUCT
DESIGN
WORKS

VARIOUS
PRODUCT
DESIGN
WORKS





PRODUCT BASED GRAPHIC DESIGN

CONSUMER PRODUCTS AND PACKAGING

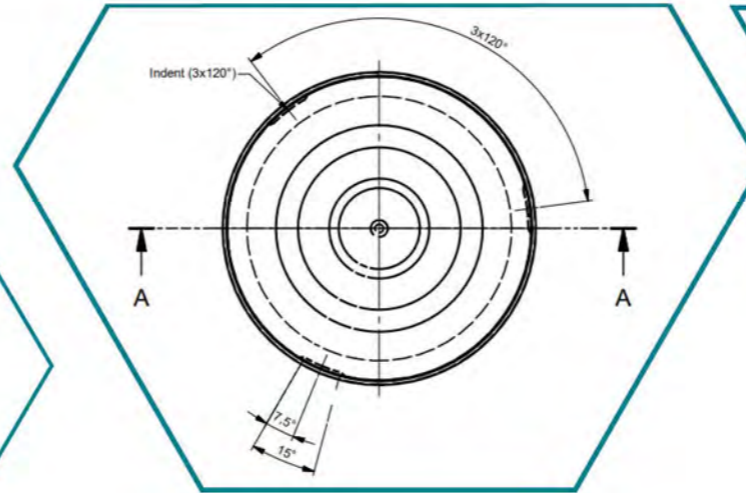
- I utilise company asset portals to acquire media and curate imagery.
- I follow brand guidelines in applying them to 3d products, complex surfaces, and packaging for approval.
- One of my largest clients, Silgan Containers, manufactures food and beverage containers.
- I also worked with Foxconn (Apple's MFG) on several CMF & parts.





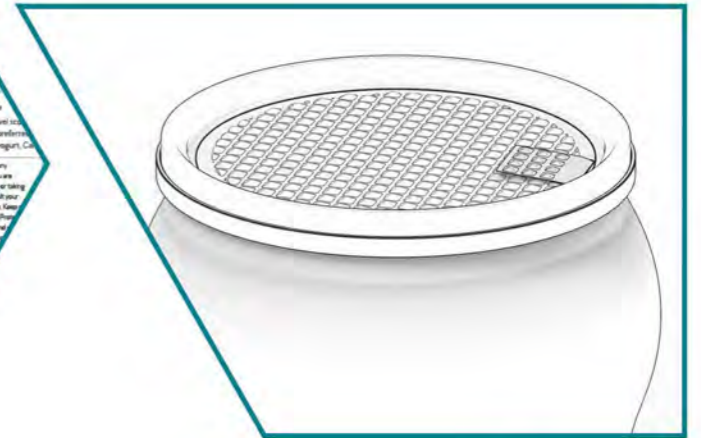
BRANDING / GRAPHIC DESIGN

- I created graphics and custom typography for a range of existing and new companies / ventures.
- I also created patented authenticity and qr tracking technologies for several products.
- I provided all assets for testing, prototyping, rfqs, and eventually manufacturing.



INSTRUCTIONAL GRAPHICS

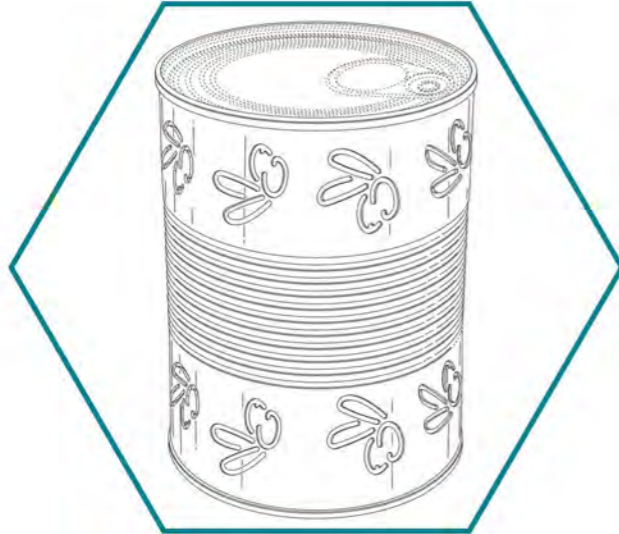
- I created icons for a new technology of can openability.
- This allowed for a minimal amount of printed items.
- My graphics were used for production as well as for later patents.



Quick Peel® foil ends multi-material hybrid applications.

CONTAINER GRAPHICS

- I created a new label layout and used my renderings for approval.
- I also created a 3d wafer structure with a new membrane technology.
- My CAD model and line drawings were also used for later patents.



2017 09-07 No date specified. <https://www.packaging-technology.com/2017/09/07/container-popping-with-possibilities-00/>
(Continued)

D9/438
Classification Search
D7/300, 317, 392.1, 396.2; D9/434-436, D9/447, 499, 438
B65D 17/40; B65D 17/28; B65D 79/00
application file for complete search history.

References Cited
U.S. PATENT DOCUMENTS

D200,077 S *	1/1965	Stec	D9/438
D208,591 S *	9/1967	Bozek	D9/438
D221,137 S *	7/1971	Saunders	D9/438
D221,930 S *	9/1971	Saunders	D9/438
D224,209 S *	7/1972	Kinkel	D9/438
D224,962 S *	10/1972	Saunders	D9/438
D224,963 S *	10/1972	Saunders	D9/438

CLAIM
(57)
We claim the ornamental design for a can lid, as described.

DESCRIPTION
FIG. 1 is a top view of a can lid; and, FIG. 2 is a top perspective view of the can lid of FIG. 1. The ornamental design which is claimed is shown in solid lines in the drawings.

1 Claim, 2 Drawing Sheets



INTELLECTUAL PROPERTY

US PATENTS / ILLUSTRATIONS

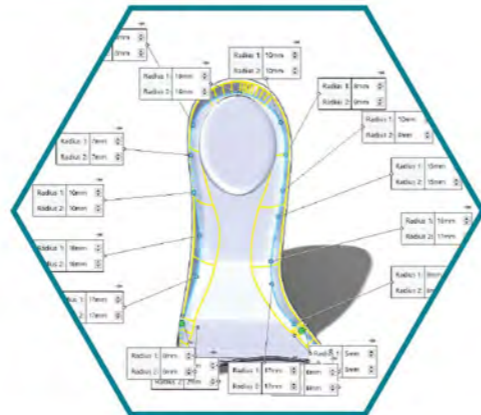
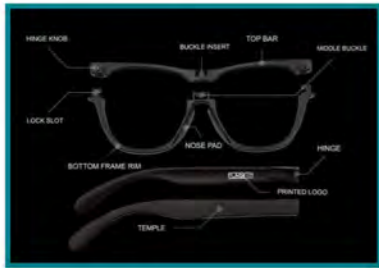
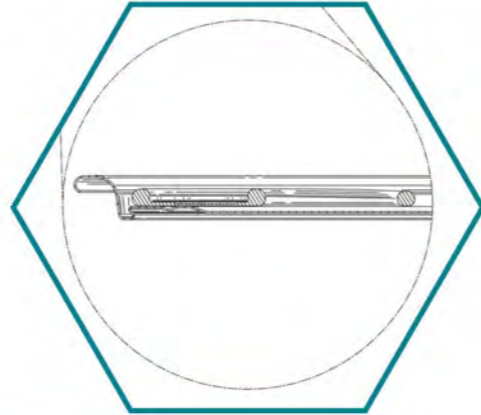
- My clients hire me to have innovation sessions and I create the digital media that is necessary for design and utility patents.

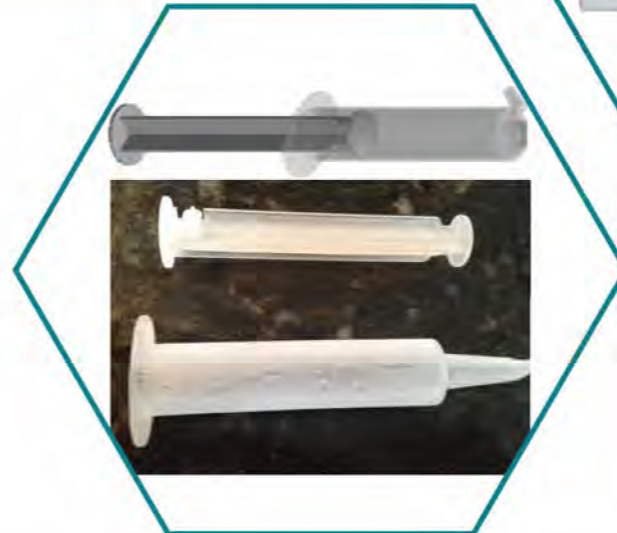
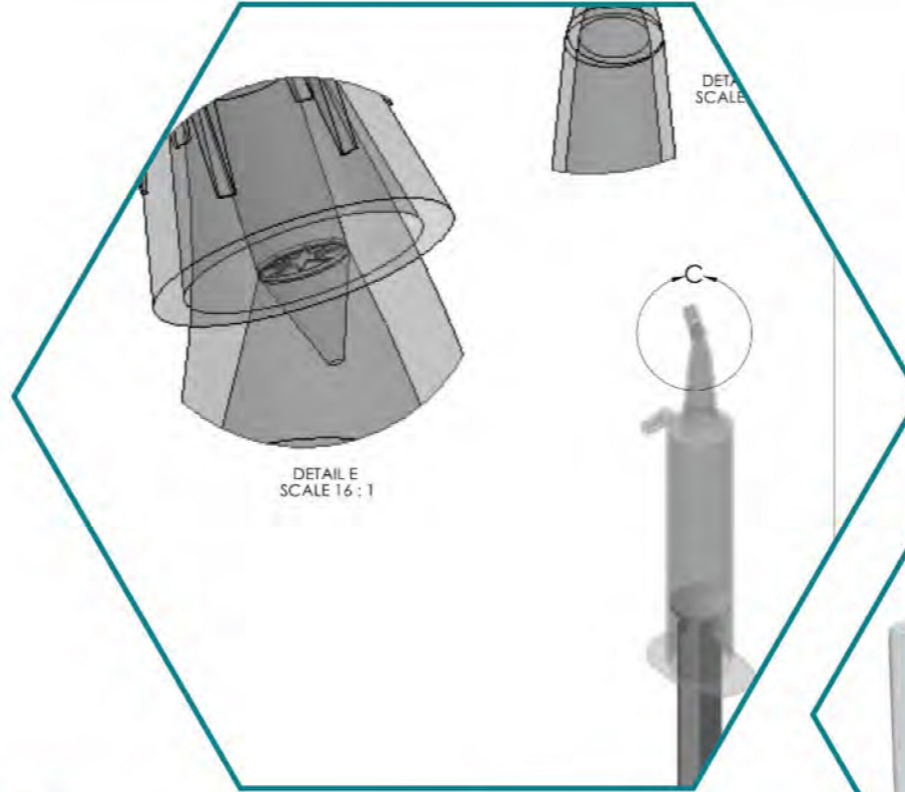
- The Following patents have been granted to me as the sole proprietor

D 904,206 D 891,265 D 879,609 D 924,075 D 926,050



VARIOUS I.P. WORKS



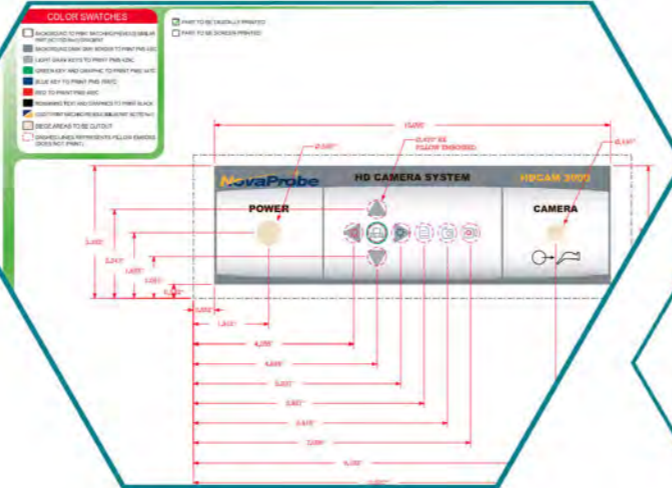


MEDICAL DEVICE DESIGN

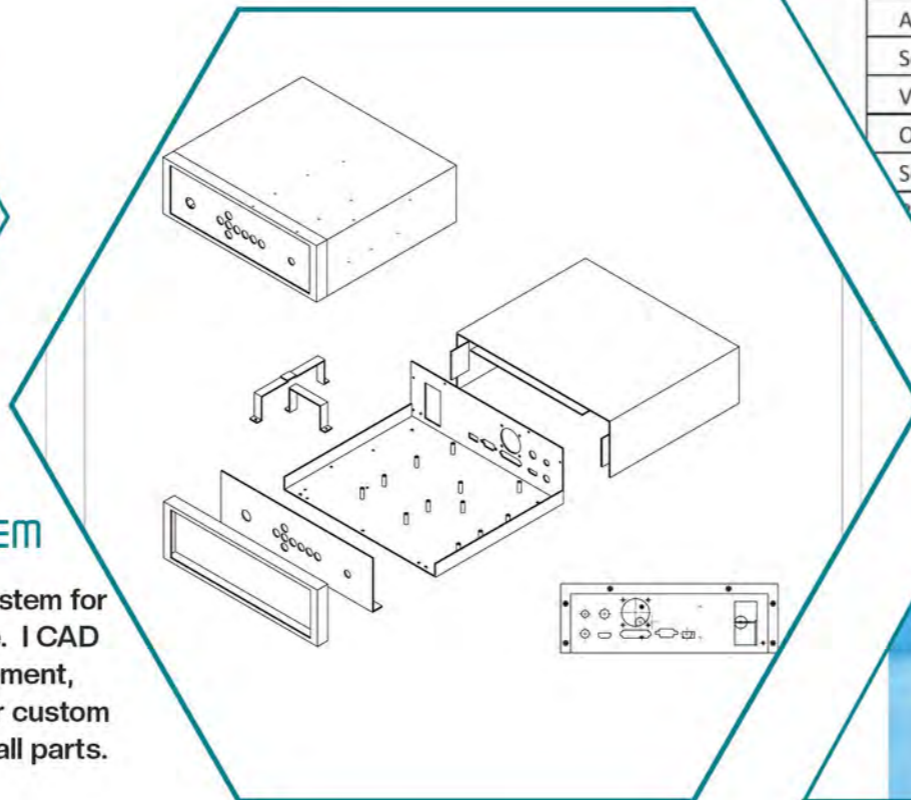
MEDICAL PRODUCTS / DENTAL PRODUCTS

- I have been contracted to work on several surgical devices in various fields. Along with new ergonomic handle designs and user interface graphics / icons.
- I created a surgical technique guide for a spinal implant product that was sent to the FDA for approval. This included critical instructional information for surgeons during operations.
- I have developed and prototyped several dental products as well.





Chip Type	CMOS
Resolution	1920 x 1080P
Aspect Ratio	16:9
Scanning	Progressive
Video Capture	Built in SD card - Video Recording at 30 FPS
Output	DVI, S-Video, HDMI, USB 3.0
Software	NovaProbe Image Processing Software for PC
Recording Control	Control Panel, Camera Head or Foot Switch
Optical Zoom	18-24 mm



ENDOSCOPY CAMERA SYSTEM

- I created a new endoscopy camera housing / system for a surgical equipment company called Nova Probe. I CAD modelled the enclosure along with the PCB placement, designed the industry's first scope icon and other custom button symbols on the interface, and prototyped all parts. They are currently in production.

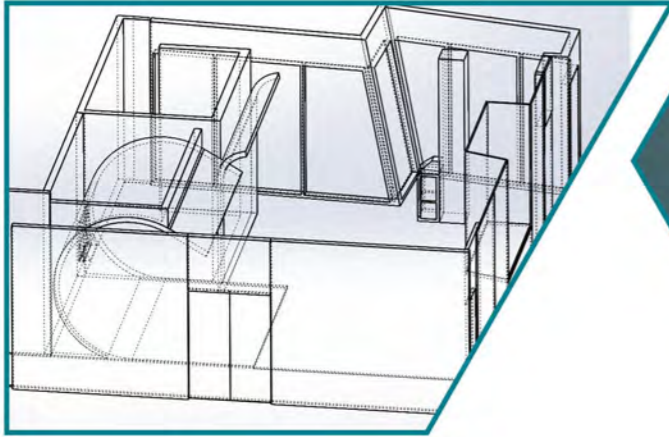


ENVIRONMENTAL DESIGN

INTERIOR / WAYFINDING / FURNITURE DESIGN

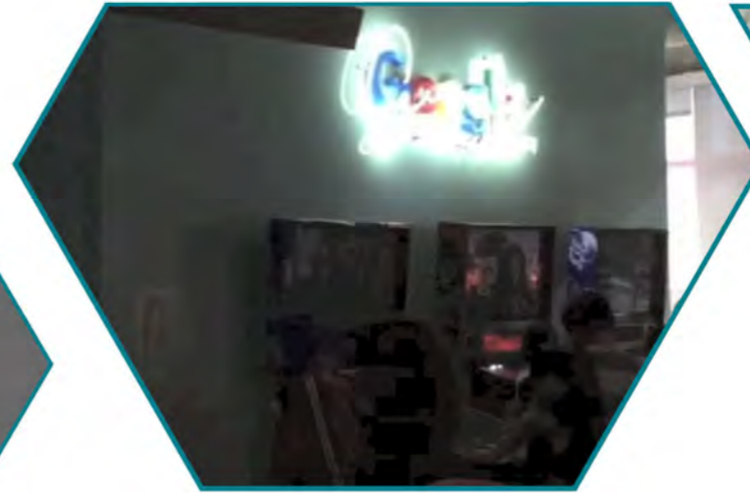
- I was contracted by Google to create immersive experience areas within their offices in Irvine and the five hundred thousand square foot Playa Vista Headquarters in Long Beach, CA.
- QVC bought out their competitor HSN, and became Qurate. I designed and installed new environmental branding for their headquarters. As well as new wayfinding and interactive "photo opp" installations for the launch. I also worked on new tv set designs and exterior sign-age.
- I designed and managed the construction plans for several restaurant remodels. This also included custom stool and table designs.





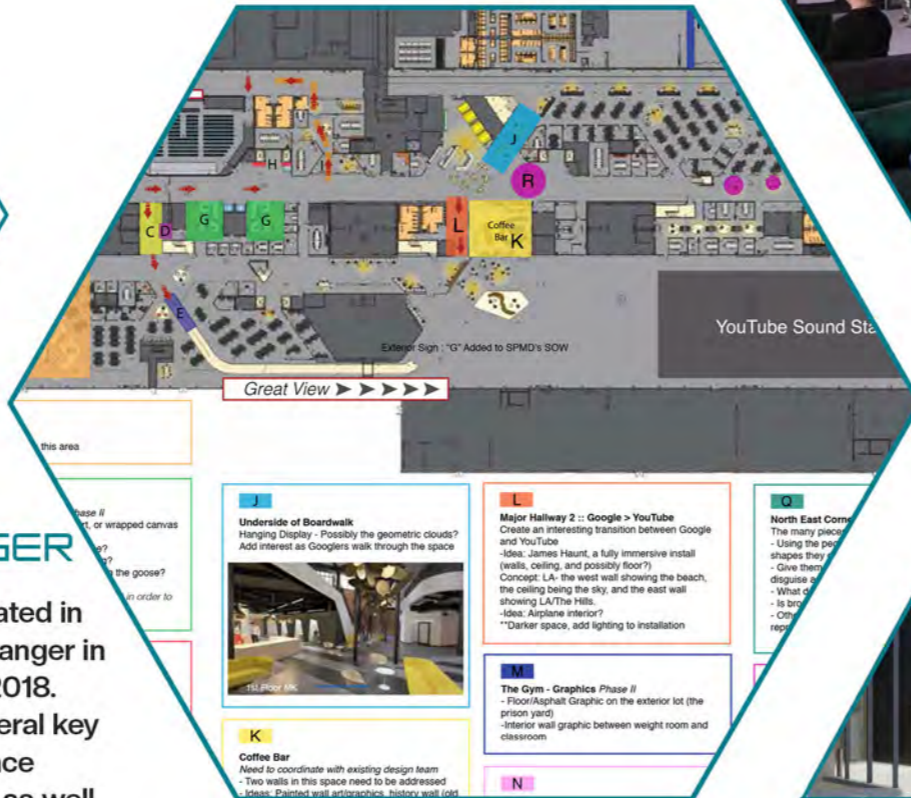
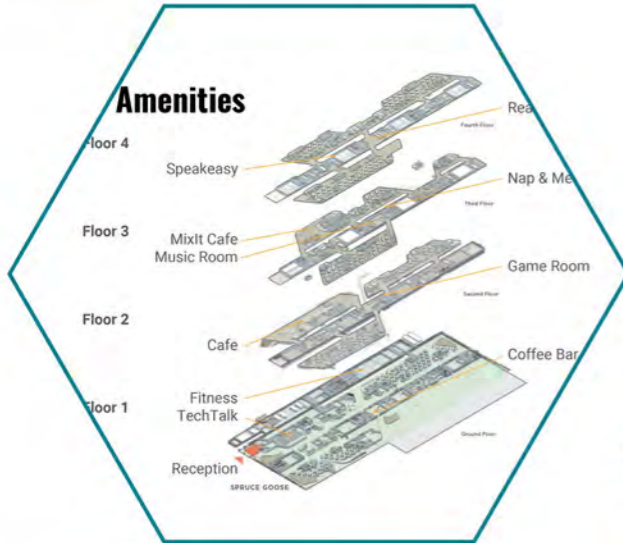
GOOGLE IRVINE BREAKROOM

- I was contracted to go on-site and reverse engineer the space. Google's director requested an "Instagram-able moment". Surrounded by vinyl window wraps of a local arcade. And additionally a VR video game room behind a pinball machine wall.



GOOGLE IRVINE CONTINUED

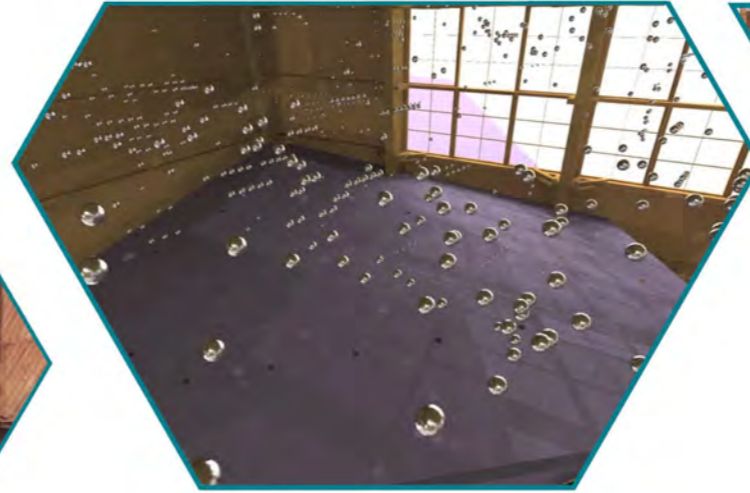
- I also designed and fabricated a new logo wall mount that featured the CEO's (Larry Page) hand signature , turned into a neon light.
- I created the graphics for the surf-wall, and for the rest of the arcade themed props / wall coverings.



GOOGLE PLAYA VISTA HANGER

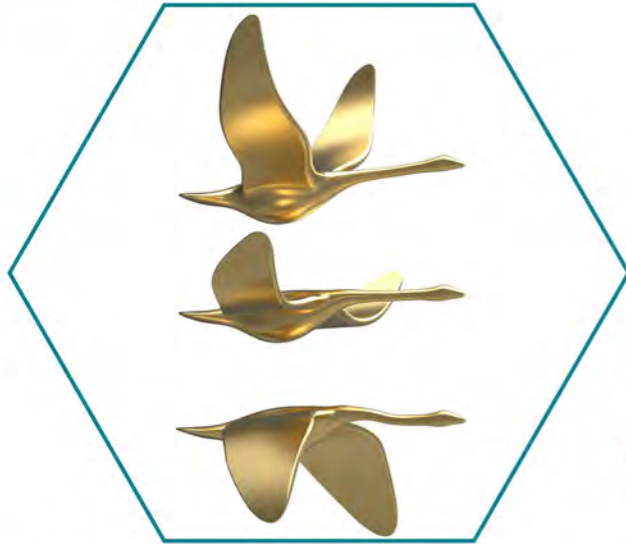
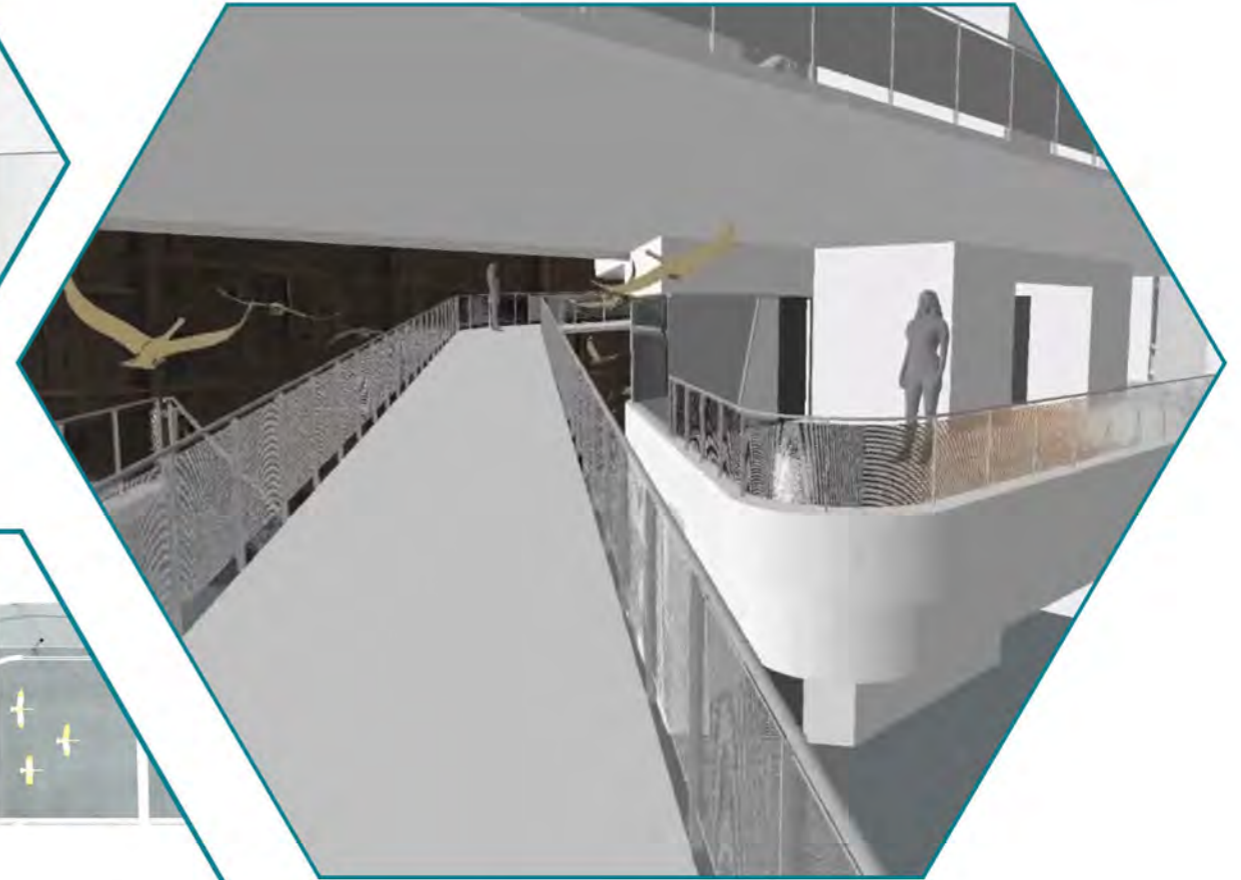
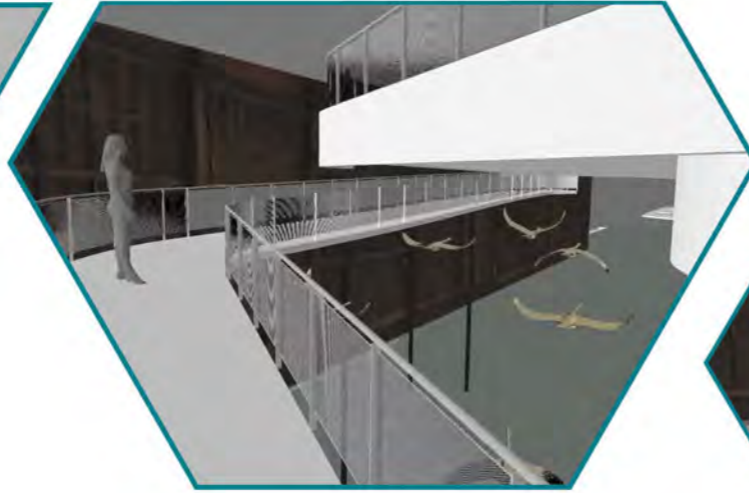
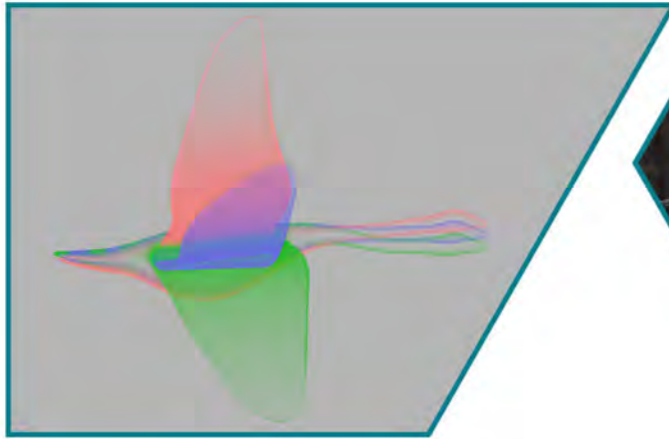
- 450,000 sq feet of office space was built/created in Howard Hughes's old "Spruce Goose" aviation hanger in Long Beach, CA. Completed in appox. 1 year in 2018.
- I designed and managed the fabrication of several key (and permanent) art installations thought the space
- I also provided design direction for wayfinding as well.





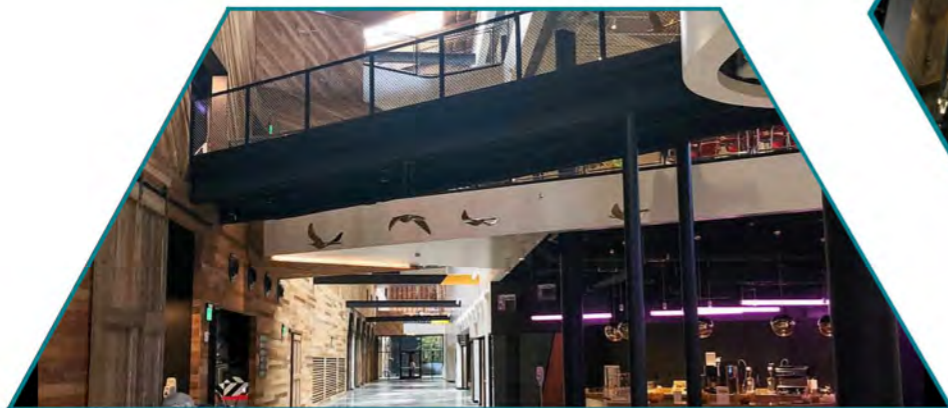
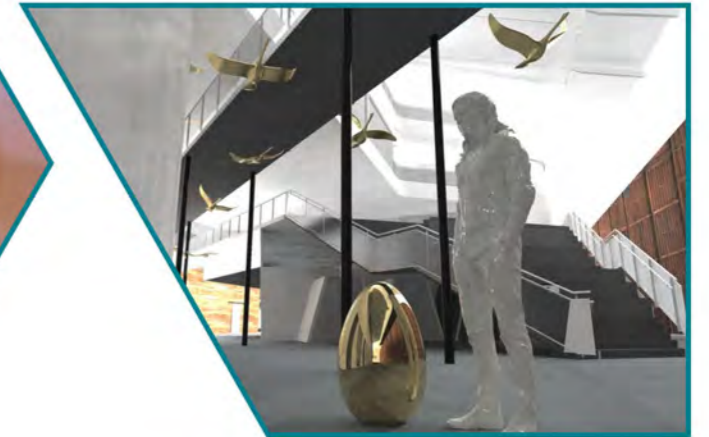
GOOGLE PLAYA VISTA HANGER

- The main entrance contains a very large, suspended cluster of steel spheres. When a patrons walks to a marked focal point, the silhouette of the infamous "Spruce Goose" plane comes into focus.



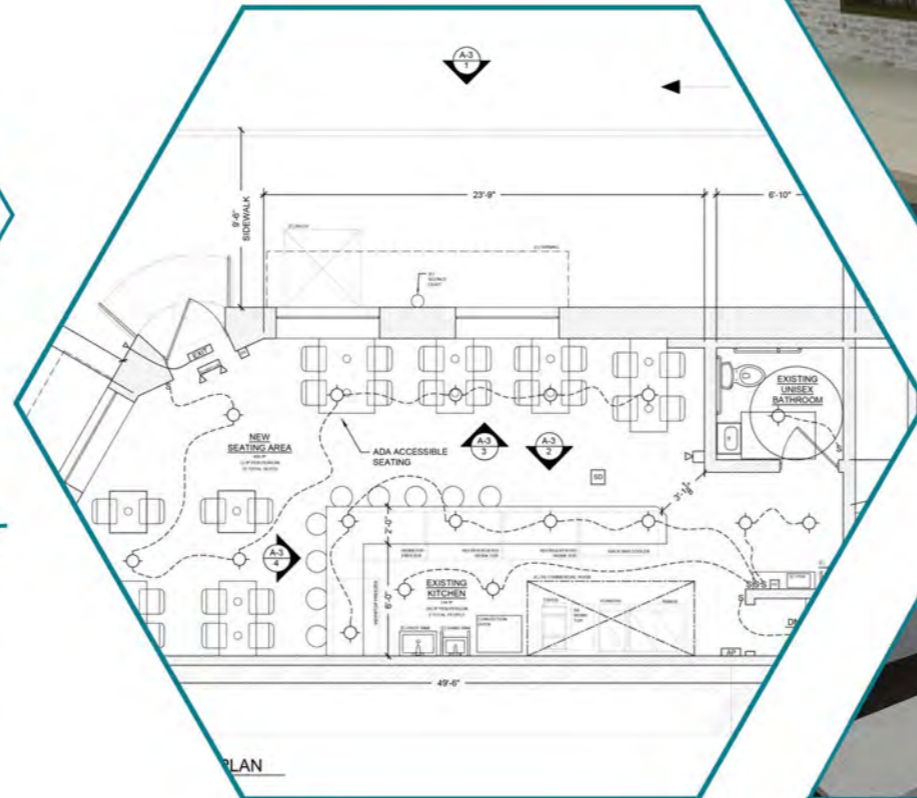
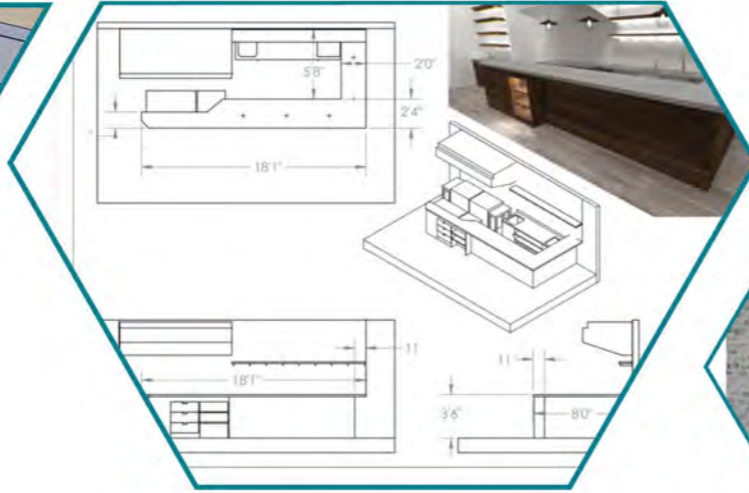
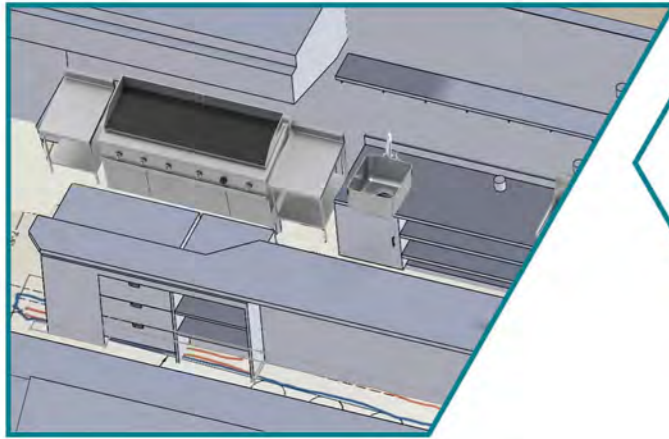
GOOGLE HQ GEESE GAGGLE

- Several mezzanines in the office received a symbolic flock of golden geese. As an homage to Howard's plane and also to promote the "team initiative" that Google's director conveyed to me during a proposal.
- I designed 3 custom / stylized geese in varying stages of flight.



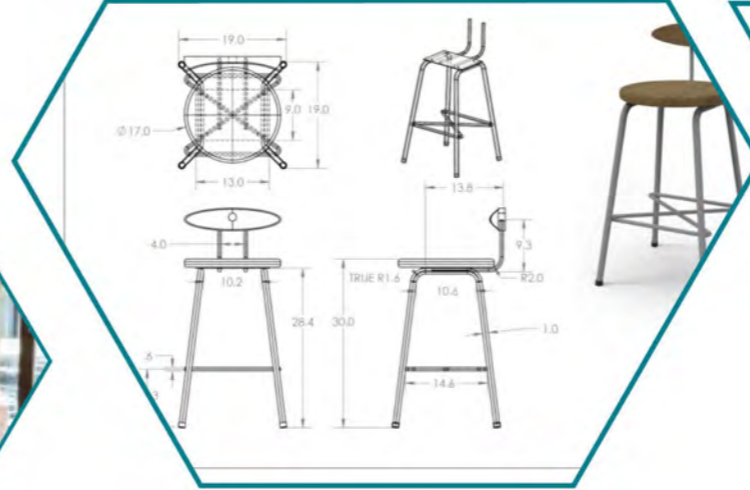
GOOGLE HQ GEESE GAGGLE

- Each goose was created on a large format FDM 3d printer and powdercoated.
- I also engineered the rigging and layout of the flock during the construction phase.



RIVERS TWICE RESTAURANT

- I created architectural drawings, interior design support, and furniture design for a fine dining restaurant in Old City, Philadelphia.
- Once permits were approved, I managed a construction crew to execute and install my designs.



RIVERS TWICE RESTAURANT

- The award winning bar/restaurant was a big hit.
- My stool design assisted in the branding of the bar.
- Several built-in details were featured in local magazines and the success of the job lead to additional furniture work in the Philadelphia area.



EVENT / CORPORATE DESIGN

- I provided extensive CAD, 3d rendering, and construction support for many different forms of interactive and outreach events. This also carried over into corporate lobbies and interior spaces.



INTERACTIVE DISPLAYS

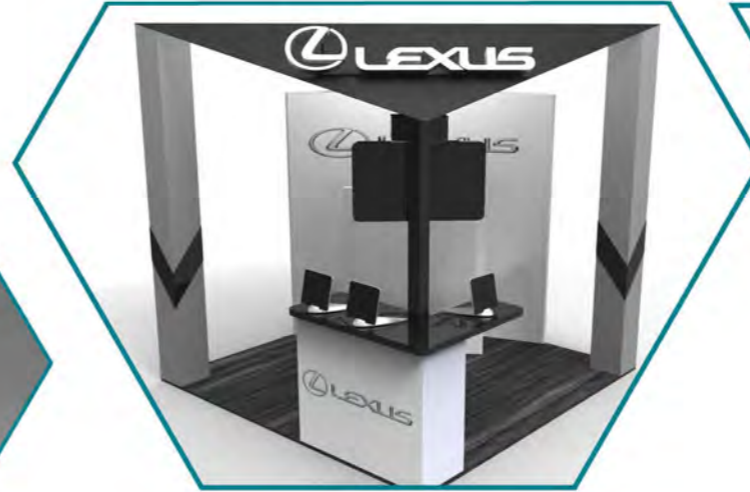
TRADE SHOW / EXHIBIT DESIGN

- I have designed and captained the fabrication, logistics, and installation of an array of branded spaces for all types of events and special pop-ups.
- I specialize in transforming corporate initiatives into real life experiences.



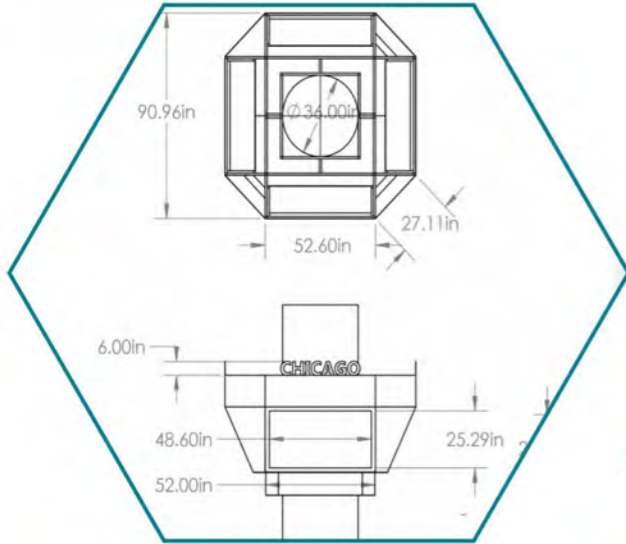
FORD ESSENCE MUSIC FEST

- My full event design was submitted and selected for the 2016 Ford Essence Festival in Atlanta Georgia. The build out had a 2 million dollar budget. Jay-z and Beyonce headlined on stage.
- I created all of the graphics, material selections, props, and fabricated a custom selfie station.



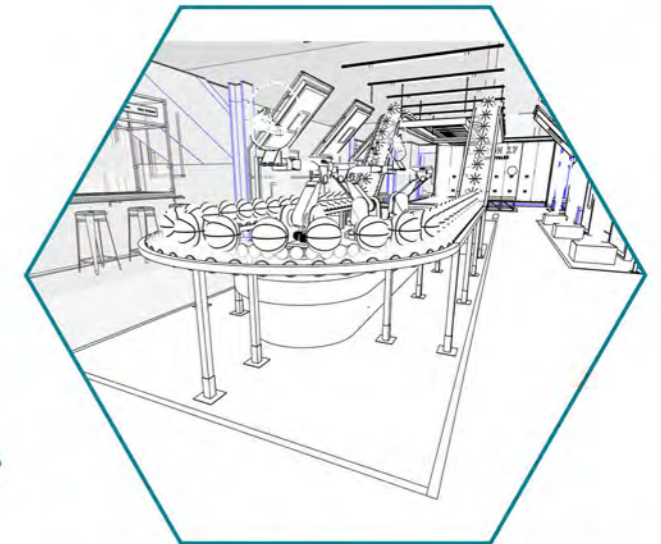
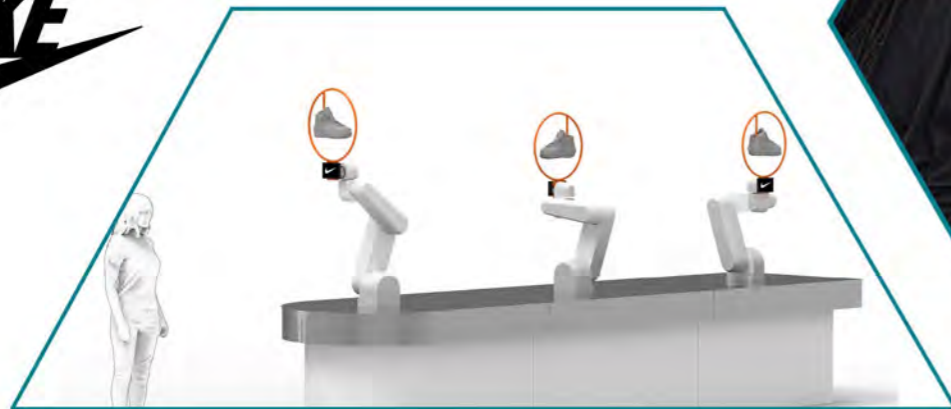
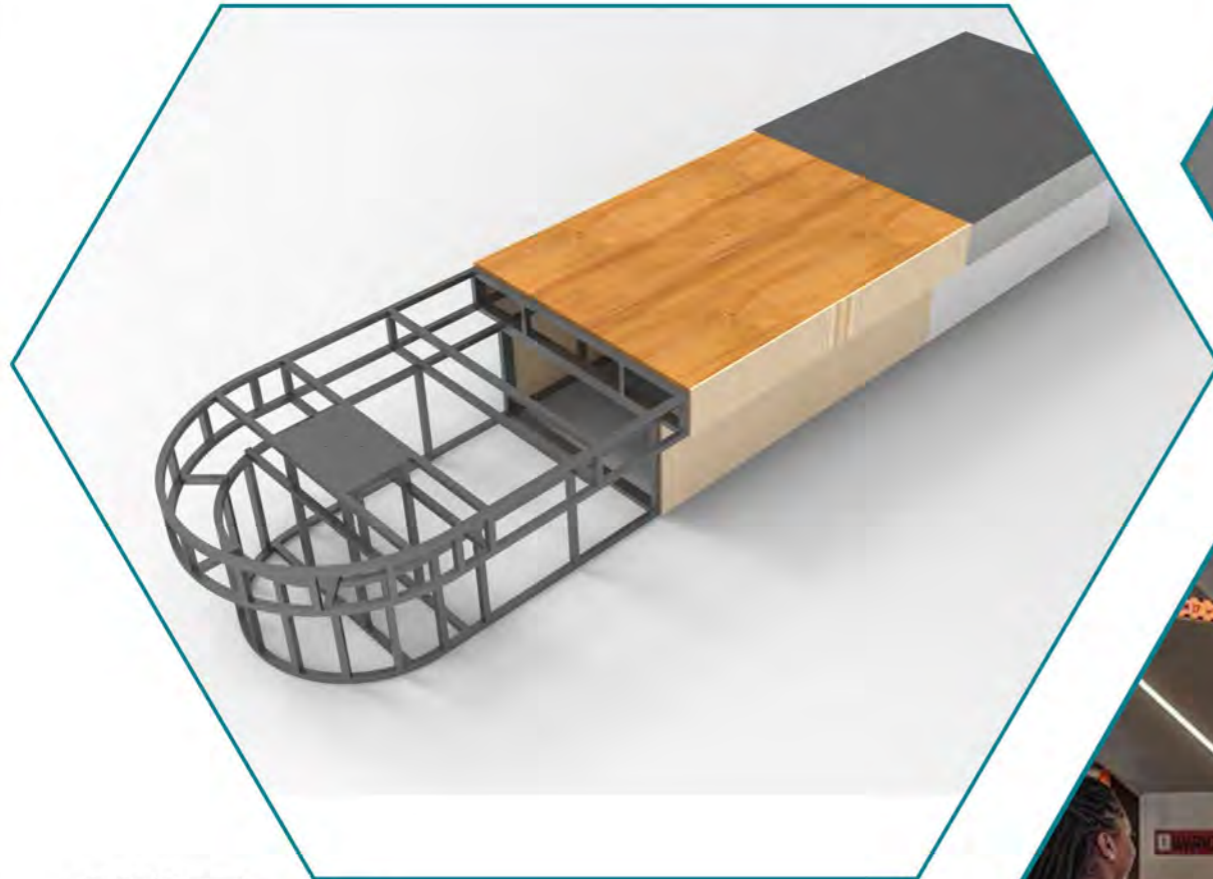
LEXUS EVENTS AND CAR-SHOWS

- I designed and managed the fabrication of a wide variety of "sign-up to win" events and games.
- I also created all new booths and informational wheel-stands for SEMA. Complete with built in adjustable lighting and speakers.
- I gained extensive skills in using Asset Portals.



AT&T NBA JUMBOTRON CHICAGO

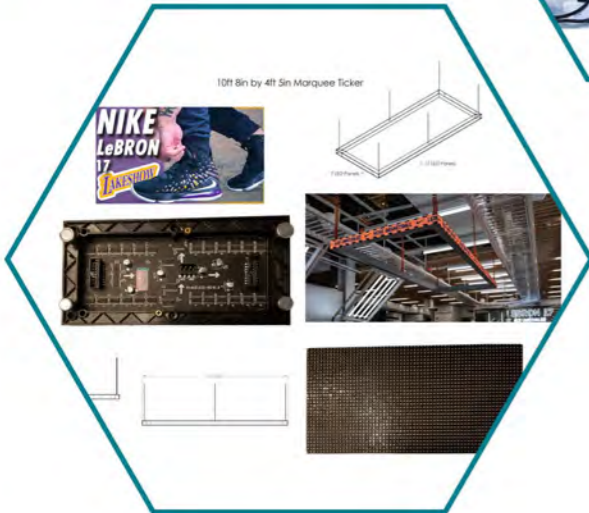
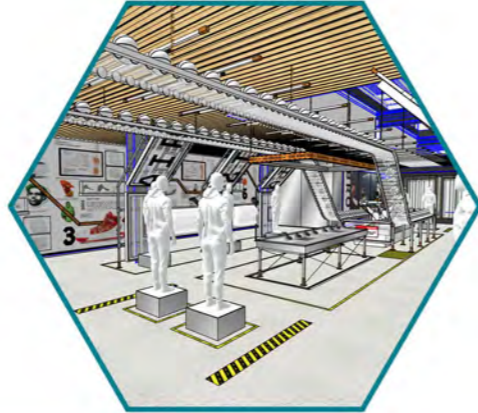
- I was contracted to engineer, fabricate, and manage the installation of a fully functional jumbotron replica.
- All cladding was created in Solidworks Sheet Metal. The completed parts fit together perfectly onsite.
- An internal computer allows for remote content management of live NBA stats at their flagship location.

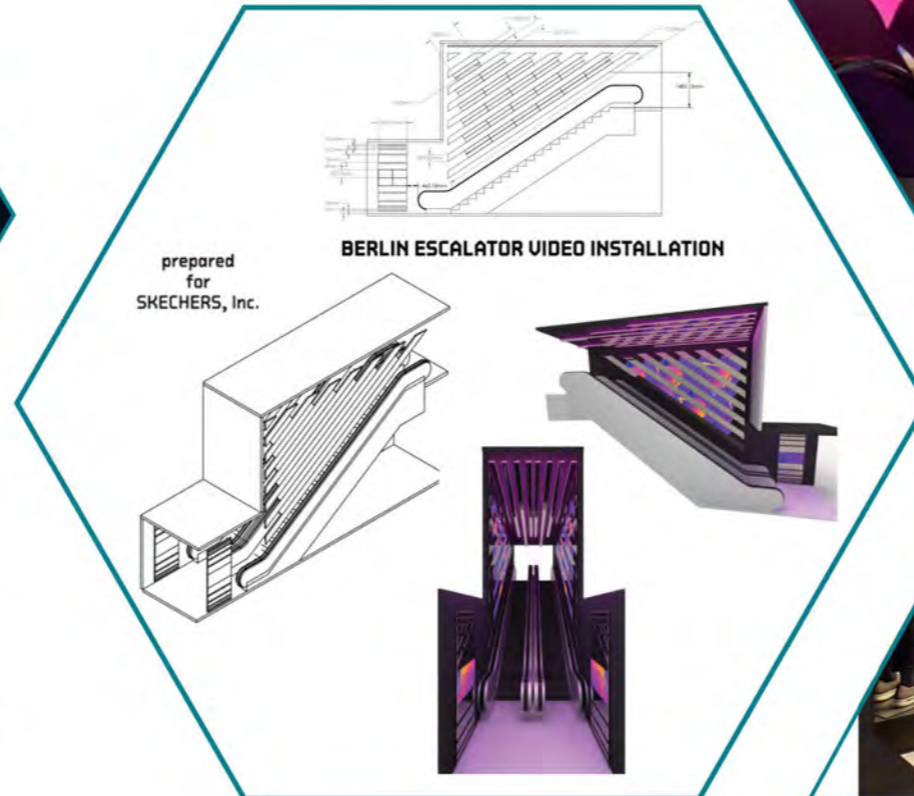


NIKE LEBRON 17 SOHO NYC

- I designed and provided complete fabrication management for an interactive robotic retail display.
- I also assisted in the programming movements of the UR robot arms. Along with a built in 3d scanner.
- This also included the engineering and rigging for marque tickers throughout the 6 story Nike store.

NIKE NYC
CONTINUED





SKECHERS ESCALATORS

- I designed, pitched, and executed on the fabrication of two flagship Skechers stores. One in Munich and one in Berlin.
- They were built with state of the art LED tiles and mirrored stainless steel.
- They all featured remote content control.



QVC / HSN / QURATE INC.

- I provided key brand transformation for QVC when they acquired the Home Shopping Network and became Qurate.
- This included interior and exterior corporate re-branding and inspiring "Instagramable Moments" for their studio tours.

THANK
YOU!!!

