

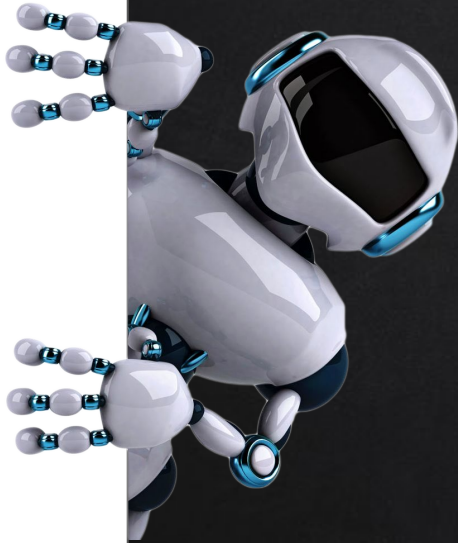


SCHOOL IN THE **AGE OF**  
ARTIFICIAL INTELLIGENCE!



WHAT DO YOU ALREADY  
KNOW ABOUT A.I.?

---



**Kahoot!**



## AGENDA

- ✘ Defining and understanding artificial intelligence (A.I.)
- ✘ Myths
- ✘ Skills of the Future in the age of A.I.
- ✘ A.I.'s Future Role in Three Domains of Student Development:
  - Academic
  - Career
  - Personal Social



## THINGS TO CONSIDER

- 18+ X Many A.I. tools require users to be 18-years or older. Parents/Guardians should be the users.
- EXPERIMENTAL X Most A.I. tools are still in their infancy and are rapidly improving.
- VERIFY X A.I. tools sometimes make errors. Verify any information you gather with a second source.
- ETHICS X Powerful tools always come with a responsibility to act ethically and responsibly.



# DEFINITION OF “ARTIFICIAL INTELLIGENCE

SPEECH RECOGNITION

DECISION-MAKING

PROBLEM-SOLVING

LEARNING

Artificial intelligence (A.I.) refers to the simulation of human intelligence in machines that are programmed to mimic and perform tasks that would typically require human intelligence, such as speech recognition, decision-making, problem-solving, and learning. AI systems are designed to analyze vast amounts of data, identify patterns, and make predictions or recommendations based on the acquired knowledge.



# UNDERSTANDING A.I.

## MACHINE LEARNING

Machine learning is a branch of artificial intelligence that enables computer systems to learn from data and improve their performance on specific tasks without being explicitly programmed.

## GENERATIVE A.I.

Generative AI refers to the field of artificial intelligence that focuses on creating models capable of generating new and original content, such as images, text, or music, that resembles the patterns and characteristics of the training data.

## DEEP LEARNING

Deep learning is a subfield of machine learning that focuses on training artificial neural networks to learn and make predictions or decisions in a manner similar to how the human brain processes information.



## MYTHS

1. A.I. is always accurate
2. A.I. is always safe
3. Unbiased
4. A.I. is already smarter than humans
5. A.I. will take all of our jobs

*“A.I. is no threat to human ingenuity and creativity. When executed correctly, A.I. in the workplace doesn’t threaten real jobs; It just eliminates the drudgery.”*

– Satya Nadella, Microsoft CEO





# THESE ARE THE 5 SKILLS THAT WILL BE MOST IN DEMAND IN THE AGE OF A.I.

Joseph Fuller, Professor, Harvard Business School

- ✗ Critical Thinking
- ✗ Creativity
- ✗ Collaboration
- ✗ Adaptability
- ✗ Emotional Intelligence





## ETHICAL & RESPONSIBLE USES OF A.I.

- |  |  |    |   |  |
|--|--|----|---|--|
|  | Asking a chatbot to write a paper for you when it should be your own work. | 01 | Gather information and data more efficiently, then verify it. |  |
|  | Cheating on tests, quizzes, or assignments.                                | 02 | Use it to provide targeted and personalized information.      |  |
|  | Creating misinformation through fake articles, images, or videos.          | 03 | Learn answers to very specific questions.                     |  |
|  | Using it to create content that bullies or harasses others.                | 04 | Briefly summarize large amounts of data and information.      |  |
|  | Expecting A.I. to make decisions about your future.                        | 05 | Solve real-world problems.                                    |  |



# IMPACT OF A.I. ON STUDENT DEVELOPMENT



1.

## ACADEMIC DEVELOPMENT

### Tool

- ✗ Finding Resources
- ✗ Compiling Ideas
- ✗ Personalized Learning
- ✗ Intelligent Tutoring
- ✗ Automated Feedback
- ✗ Content Creation
- ✗ Language Learning
- ✗ Early Intervention

### Obstacle

- ✗ Plagiarism
- ✗ Cheating
- ✗ Over-reliance on A.I. for answers
- ✗ Lack of Critical Thinking
- ✗ Lack of Creativity & Innovation
- ✗ Loss of independent research skills.

# 2.

## CAREER DEVELOPMENT

### Tool

- ✗ Self-exploration
- ✗ College & Career Pathways
- ✗ Future Job Market Insights
- ✗ Personalized Job-Matching
- ✗ Resume & Cover Letter Optimization
- ✗ Mock Interview Preparation

### Obstacle

- ✗ Creating Inauthentic Resumes and Cover Letters
- ✗ Neglecting Networking Opportunities
- ✗ Ignoring Soft Skill Development
- ✗ Depending on A.I. to make critical life decisions

# 3.

## PERSONAL / SOCIAL DEVELOPMENT

### Tool

- ✗ Simulated social interactions
- ✗ Mental health resources
- ✗ Combating cyberbullying and online safety
- ✗ Communication aids for students with disabilities
- ✗ Personalized feedback and guidance about goals and challenges

### Obstacle

- ✗ Bullying & Harassment
- ✗ Depending on A.I. for mental health support
- ✗ Echo chambers and confirmation bias
- ✗ Using A.I. to avoid human connection



THANKS!

Any questions?

Mr. Ian Brodie  
High School Counselor  
[ibrodie@fcps.edu](mailto:ibrodie@fcps.edu)