

# Catalogue of Charity Art Exhibition 2023

Angus Donaldson Art - [info@angusdonaldsonart.co.uk](mailto:info@angusdonaldsonart.co.uk)

## Framed artwork



Isle sur la Sorgue  
27"x23"



East from Portknockie  
21"x29" **SOLD**



The Whale's Mou,  
Portknockie  
29" x 25" **SOLD**



Butler's Pool  
Ballindalloch  
35" x 28"



Rocks at Birsay Orkney  
28.5"x24"



The Ben from Glenrinnies  
**NFS**



Ballindalloch Gatehouse  
19" x 16"



Pals 16" x 20"  
**SOLD**



An Angry Sea  
25" x 21" **SOLD**



Bow Fiddle Rock from  
Cullen 36" x 28" **SOLD**



Gallop on the Beach  
33" x 29" **SOLD**



A Bank of Trees  
21" x 17"



Cockerel and Hen  
20" x 24"



Who's in Charge?  
**SOLD**



Looking South by Ben  
Rinnes 20" x 24"



Evening (Horses)  
20" x 24" **SOLD**



Beachboys  
25" x 21"



Beside the River Teith,  
Lanrick 28" x 24"



Highland Gathering  
26" x 24"



Looking towards Ben  
Rinnas 35" x 29"  
**SOLD**



Ebb and Flow  
30" x 26"  
**RESERVED**



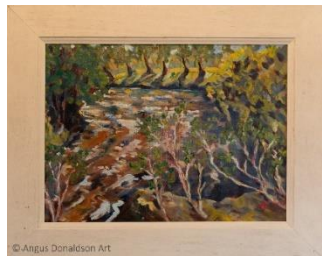
A Quiet Day  
26" x 29.5"



Disbelief  
23" x 19.5"  
**SOLD**



Archway  
**SOLD**



River Avon at Delavorar  
**SOLD**



Old Bridge on the A'an  
Ballinalloch 21" x 16.5"

**NFS**



Pond  
41" x 28"



Summer Shade  
24.5" x 20.5"

**RESERVED**



Autumn Approaches  
18" x 12.5"



Harvest's Over  
**SOLD**



Mushrooms & Gourds  
**SOLD**



The Craggan



In the Wild  
23.5" x 19.5"



Stormy Sky  
29.5 x 25.5" **RESERVED**



Dying Light  
29.5" x 26" **SOLD**



Pheasants  
23.5" x 19.5"



Guillaume of Cameroon  
33" x 23.5"



The Look  
16.5" x 20.5"



Paddling  
19" x 23.5"



Water lilies

**SOLD**

## Catalogue of Charity Art Exhibition 2023

Angus Donaldson Art - [info@angusdonaldsonart.co.uk](mailto:info@angusdonaldsonart.co.uk)

### Unframed artwork



Mountain Range  
23" x 8"  
**SOLD**



Morning Glory  
31" x 12"



Heather Hills  
31" x 12"  
**SOLD**



Village Seascape  
31.5" x 11.5"



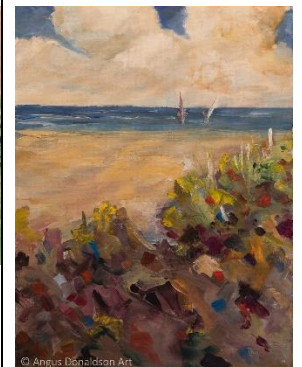
The Falls at Bridgend,  
Glenlivet  
24" x 20"



Jakob's Sheep  
31.5" x 23.5"  
**SOLD**



Abandoned Go Kart  
16" x 12.5"



Yachts at Sea  
12" x 16" **SOLD**



Forest Glade  
15.5" x 12"



The Jockey  
15.5" x 19.5"



Gathering Storm  
12" x 10"  
**SOLD**



Moody Waterfall  
23.5" x 23.5"



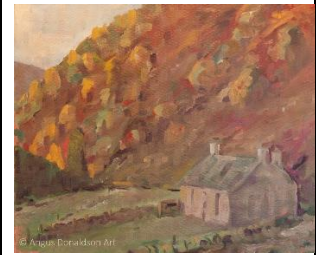
Sunrise over the Ocean  
30" x 20"



Island  
12" x 10"



Steadings  
26" x 22" **SOLD**



Topliss  
20" x 16"



Blue Vase with Daffs  
19.5" x 15.5"



Cat  
8" x 8" **SOLD**



Collie Dogs  
8" x 8"  
**SOLD**



Reflections  
8" x 8"  
**SOLD**



Cullen Bay  
8" x 8"  
**SOLD**



Pink Sunset over the Sea  
22" x 18"  
**NFS**



Woman in the Street  
16" x 20"



Man in the Street  
16" x 20"



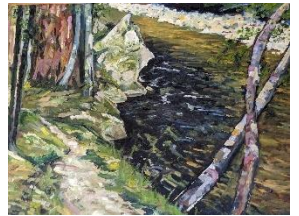
Boats on Loch  
24 x 18"



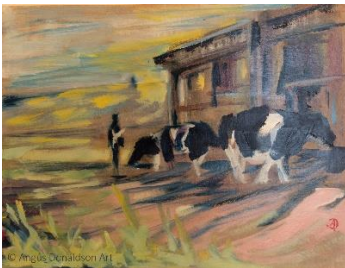
Distillery Scene  
18" x 24"



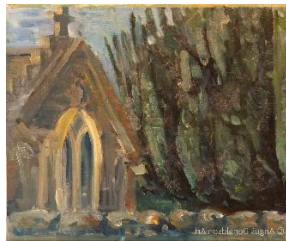
Fallen Tree  
20" x 24.5"  
**SOLD**



River Scene



Cattle  
16" x 12"  
**SOLD**



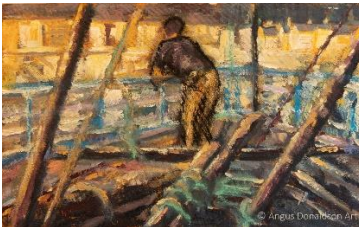
The Church  
16" x 13"



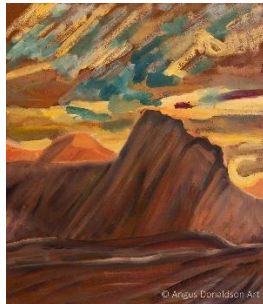
Autumn Approaches LGE  
18" x 12.5"



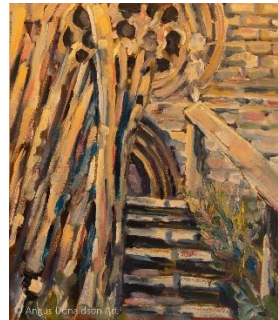
Autumn Approaches  
SML  
12.5" x 6.5" **SOLD**



Man on Ship  
16" x 10"



Cliffs  
14" x 16"



The Steps (Inc charcoal  
sketch) 14" x 16"



Kettle  
11.5" x 8.5"  
**SOLD**



Snowy House  
10" x 13"



Seascape  
12.5" x 9.5"



Horses  
16.5 x 12.5"  
**SOLD**



Misty Coastal Scene  
16" x 12"  
**SOLD**



The Orchard  
13" x 16"



Lions in Tanzania  
26" x 14" **SOLD**



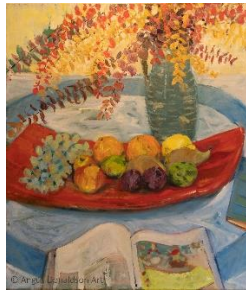
Blue Beach Boys  
24" x 20"  
**SOLD**



The Old Bridge Glenlivet  
24" x 20"



Horses on the Beach  
22" x 18" **SOLD**



Fruit Bowl and Book  
22" x "6"



Carlos  
16.5" x 12.5"



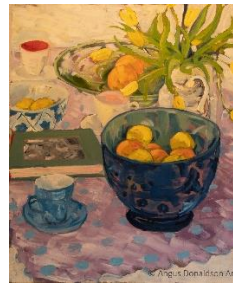
Packhorse Bridge  
22" x 18"  
**NFS**



Cyclists  
20" x 16"



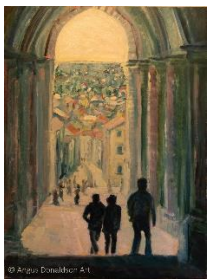
Cheeses



Bowl of Fruit  
24" x "8"



Casks by the Sea  
30" x 20"



View through the Archway  
18" x 24"



Pig  
18" x 24" **SOLD**



The Yard  
16" x 12"



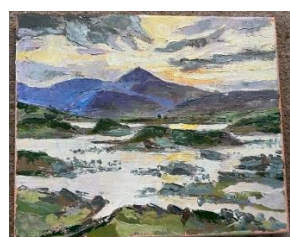
Hares  
16.5" x 12"  
**SOLD**



The Beach I



The Beach II



Loch Rannoch  
12" x 10" **SOLD**



Ebb and Flow  
12" x 8.5" **SOLD**



Lady Hill, Elgin



Daffodils



Awaiting



Distillery Worker



Seascape



Abstract



Trees at Lanrick



Daisies  
**SOLD**



Thistledown  
**SOLD**



Ben Rinnes  
**SOLD**



Whins on Deskie Hill  
**NFS**

In memory of Angus Donaldson, we have organised this exhibition of his artwork to raise funds for [Marie Curie](#) and [Macmillan](#). Your support is much appreciated, and we hope you enjoy the exhibition.