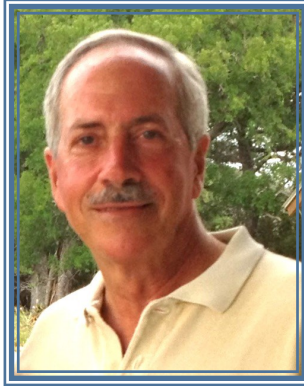




## Tarrant County Archeological Society

### President's Message

The Friends of Fort Richardson made the TAS Ceramics Academy last weekend really special. This volunteer group cooked a delicious breakfast, plus lunch both days and dinner on Saturday night for all the participants. After stuffing myself Saturday and Sunday, I see why they are in demand at other state park events. The TAS academies are always worth the money and this one did not disappoint. In addition to learning new ideas and methods, getting a chance to visit with friends from around the state and fellow TCAS members made it a fun weekend. Sometimes you even get to meet a long-time TCAS member whose name you have seen for years but whose face was unknown. Such was the case with Larry Galbiati. Saturday morning someone pointed out this gentleman in a red hat who had been taking photos and commented that he was a TCAS member; naturally I needed to meet him. Larry has been a "Life Member" for many years but doesn't normally attend our



**Chris Meis, President**

meetings, saying he has kept up with us through the newsletters. Recently retired however, we encouraged him to start coming, so if you see a unfamiliar gentleman in a red had with a camera around his neck, it's probably Larry. See Page 7 for a photo of him.

Make sure you mark your calendar for March 9<sup>th</sup> as Ashley Lemke from UTA will be our meeting speaker. Dr. Lemke has been involved in some fascinating studies on the Great Lakes. Her presentation will focus on her research of ancient caribou hunting structures now submerged by the Great Lakes. If you got a chance to read the article about her work in the *Mammoth Trumpet*, Volume 32, Num-

ber 1, January, 2017, the news magazine of the Center for the Study of the First Americans, you know what a fascinating discovery these are. See Page 2 for more about Dr. Lemke.

We have a couple of dates planned for work at the Newberry Cabin so hopefully one of them will fit into your schedule. See Page 8 for more info. In addition to the Friday dates arranged for Weather College students, we have a couple of Saturday work days in hopes of getting some TCAS members out to "move some dirt." There is much yet to be done on this, so please come help us unravel the mysteries of the Newberry Cabin occupation.

I hope TCAS is well represented at Field School this summer. If you intend to participate and don't want to camp, better find a place to stay sooner than later. The archeology and the setting will make for a memorable June along the Nueces River.

Hope to see you at the TCAS meeting on March 9th!

***Thanks for being a TCAS member and supporter!***

### Upcoming Speakers

April 13: Dr. Kat Brown May 11: Dr. Mary Black June: No TCAS Meeting July 13: Dr. Glen Sample Ely

### Connect with TCAS!

**Facebook:** <http://www.facebook.com/TCAS-Tarrant-County-ArcheologicalSociety>

**Website:** [www.tarrantarch.org](http://www.tarrantarch.org)

**Email:** [info@tarrantarch.org](mailto:info@tarrantarch.org)

## March Speaker: Dr. Ashley Lemke

The **TARRANT COUNTY ARCHEOLOGICAL SOCIETY (TCAS)** will welcome TCAS member Dr. Ashley Lemke as the featured speaker for the March 9th meeting. Meetings are free and visitors are always welcome.

Dr. Lemke and her remote operated vehicle (ROV) named Jake. He is an underwater robot that is used to look at potential archaeological sites before scuba divers are sent down to look for artifacts.



**Bio:** I'm from Washington State originally and always knew I wanted to be an archaeologist. I did my first two years of undergraduate at Western Washington University, before transferring to the University of Texas (Austin). I got a BA in Anthropology with a minor in Classical Civilizations. I then went to the University of Michigan and got my Masters in Anthropology in 2010, and my PhD last year in 2016. Now I'm an Assistant Professor of Anthropology at UT Arlington.

### Abstract: Underwater Archaeology in the Great Lakes

Archaeology underwater has experienced a global renaissance both in terms of the rate of new discoveries and the number of scholars involved in the research. This is particularly the case for the archaeology of submerged prehistoric sites, which has moved from a novelty to a major arena for understanding some of the most critical events in human history. While investigations of shipwrecks and submerged sites share some common methods and technologies – they differ greatly in the kinds of questions posed, and the research approaches needed to answer them. This presentation will give an introduction to underwater archaeology in the Great Lakes, including shipwrecks, but focusing mainly on Dr. Lemke's research on 9,000 year old caribou hunting sites

preserved in 120 feet of water beneath Lake Huron.

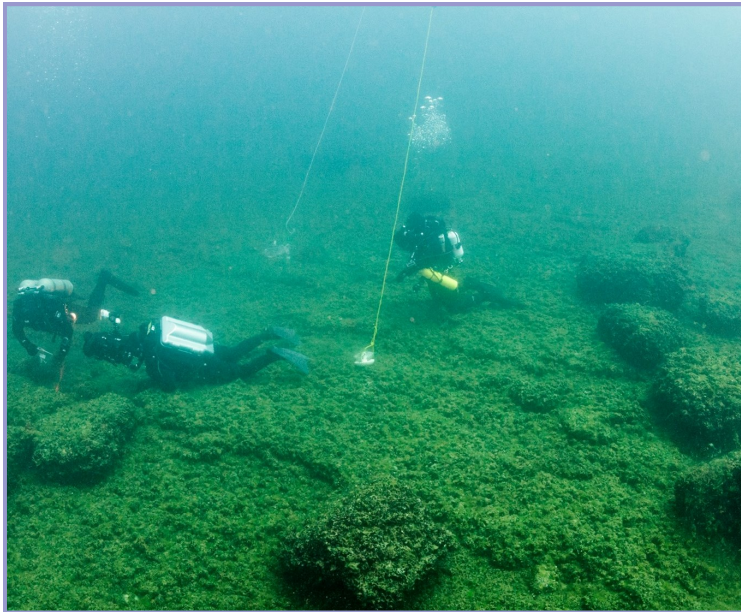
The Alpena-Amberley Ridge (AAR) is a rocky limestone and dolomite outcrop that is currently submerged and cuts across the Lake Huron basin connecting Michigan to Ontario. This land bridge would have been dry and habitable territory for prehistoric people and animals 9,000 years ago during an era of lower water levels across the Great Lakes. This corridor seems to have channeled bi-annual migrations of caribou, and archaeological sites on the AAR are primarily stone built caribou hunting structures, such as hunting blinds and drive lanes. The underwater environment has therefore preserved some of the oldest built hunting structures on the planet.

This is a crew member of hers who helped Dr. Lemke collect data for her dissertation. He is using a boat hook to retrieve an Autonomous Underwater Vehicle (AUV) - a torpedo shaped underwater device that swims below the surface and uses sonar to map the bottom. This picture was taken on her research vessel Blue Traveler, in Lake Huron.

*Photo by Ashley Lemke*

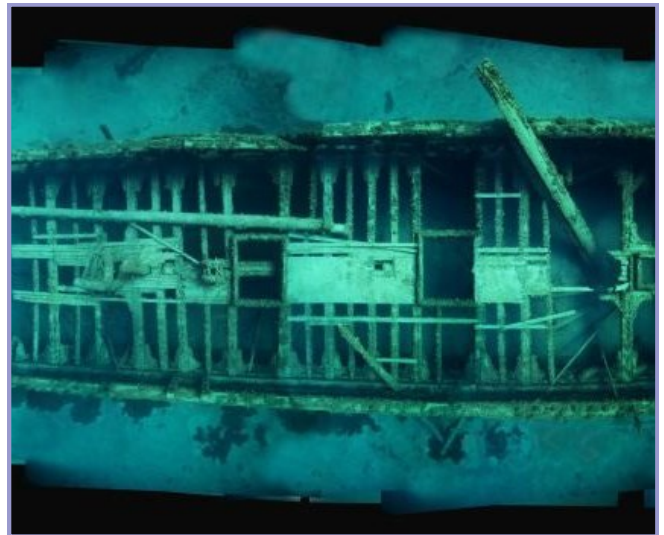


# From Dr. Lemke: Photos from NOAA Thunder Bay

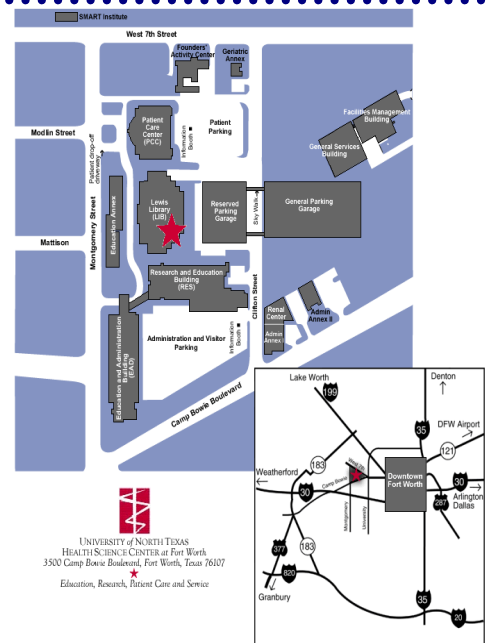


This underwater photo is of National Geographic scuba divers who worked with her group. The large stones they are in-between is a hunting site called the Funnel. It is a human built stone feature that served to funnel caribou into a small place to kill them. This one is also in Lake Huron, 100 feet underwater. It was taken by **Tane Cas-serley** of the NOAA Thunder Bay National Marine Sanctuary.

The shipwreck photo is also by **Tane Cas-serley** of the NOAA Thunder Bay National Marine Sanctuary. It's a photo mosaic of the E. B. Allen, a wooden two-masted schooner that wrecked/sank in Lake Huron in 1871.



**TCAS meets at 7:30 pm on the second Thursday of each month (except June and December) at the University of North Texas Health Science Center (UNTHSC), 3500 Camp Bowie Boulevard, Fort Worth, in the Lewis Library Building, Room 110, near the intersection of Camp Bowie and Montgomery Street. Traveling west on I30 from downtown, take the Montgomery Street exit. Turn right on Montgomery and continue to the five-way intersection at Camp Bowie. Turn right onto Camp Bowie, followed by an immediate left onto Clifton Street. Continue on Clifton to Parking Lot "1" on your left (past the Parking Garage and Sky bridge). Park in the patient spaces (after 5 PM) and go past the information booth into the underground parking garage. Turn left down the corridor at the double doors in the center. Proceed down the hallway until you come to Room 110 in the Lewis Library building.**





## TCAS 2017-2018 Board Members

Who's who and what do they do? As a way to welcome our newer members, we are featuring the friendly faces of the TCAS 2017-2018 officers. This is the final installment of this article.

### Dana Ritchie Parker, Treasurer



*Photo by James Everett*

I became interested in archaeology at a young age while spending summers exploring our family farm in North Carolina. As my brother and I picnicked in the mysterious old cemetery and dug in the dirt around the farmhouse and tobacco barns, we imagined how the generations before us might have

lived. I still visit our farm every summer where our farmers find an array of prehistoric points and the cemetery has become noted for the interment of North Carolina's 49th governor (1897-1901).

I earned a BS in Psychology from Texas Wesleyan University and finally rediscovered archaeology later in life, earning an MA in Anthropology from UT Arlington, where I also developed a passion for forensic anthropology. Prior to formally

studying anthropology, I worked in the field of early childhood education administration and currently am the financial director for Kinderplatz of Fine Arts, a non-profit fine arts preschool and kindergarten in Fort Worth. When I am not buried in the financial world, I moonlight as an anthropologist! I am an adjunct professor at Weatherford College teaching Physical/Biological Anthropology, and I work with the Tarrant County Medical Examiner's Office Anthropology Field Recovery Team recovering scattered or buried human remains. I have worked on archaeological projects in Texas, New Mexico and Belize.

I discovered TCAS in 2007 thanks to Katrina Nuncio's diligent emails to the UTA anthropology listserv encouraging students to attend the meetings! I am thankful for the opportunity Katrina provided me by urging me to attend. With TCAS and TAS, I have found a loyal group of friends with similar yet also very different interests. I find the mix of people, experiences and ideas to be fascinating! I have enjoyed serving as treasurer and look forward to my continued years with my fellow TCAS members.

### Catrina Banks Whitley, Vice-President Projects



*Photo by James Everett*

Catrina earned her degrees in Archeology from Southern Methodist University (B.A. 2000, M.A. 2006, and Ph.D, 2009), and completed her Ph.D while on a National Science Foundation Graduate Research Fellowship and a Philanthropic Education Organization Scholarship. She works in Texas and New Mexico on archeological projects as both an archeologist and bioarcheologist.

She also holds a Research Associate position at the Office of Archeological Studies, Museum of New Mexico. Catrina is trained in Human Osteology, Bioarcheology and Archeology and taught courses at the

*Continued on Page 5*

**TCAS 2017-2018 Board Members**

**Catrina Banks Whitley, Vice-President Projects**

*Continued from Page 4*

University of Texas at Arlington and at Southern Methodist University in all three subjects. Her cultural resource management work was used as evidence to pass legislation in Texas regulating the exhumation of human remains.

In her role with TCAS, Catrina has arranged for several field trips and is currently working on a group visit to the Perot Museum to see the Maya exhibit. She has also led the TCAS effort, in coordination with the Arlington Historical Society, to document and preserve the history of the Middleton Tate Johnson Plantation Cemetery in Arlington. Besides all of the work she does for TCAS, Catrina is also currently serving as Secretary for the Texas Archeological Society.

**Welcome to new TCAS Members!**

Welcome to our newest TCAS members, Betty Baskette, Donna Donnell, Susan Dunlap, Debra Myers, Steve Myers, Julee Teeples and Ian Teeples.

We're so glad that you have joined us!



**Apply now for TCAS Scholarships**

Thanks to all of you who have donated to the TCAS Memorial Scholarship Fund. Because of your generous donations, funds are available for both students and teachers for 2017. Scholarship categories have been expanded to provide funds for the TAS Technology Academy, for the TAS Field School at Camp Wood in June, as well as for the TAS Annual Meeting in October in Grapevine. Please, please encourage your students to apply — your encouragement might be the spark that ignites the desire in today's student to discover and preserve more of our past. The application and eligibility information is available on the TCAS website at [www.tarrantarch.org](http://www.tarrantarch.org)

**Your TCAS membership dues are now due ....**

**Thanks to all of you who have paid your 2017 TCAS Membership Dues! Your support provides for, among other items, the fees for the speakers at the monthly meetings, for the rental expenses for our meeting space at NTHSC and the TCAS Post Office Box, and for the TCAS membership with the Texas Archeological Society. If you still have not renewed your membership, there are three ways to pay (mail/check, online/Pay-Pal, or cash/bring to meeting) and the membership form is on the last page of this newsletter. **Now is the time!****

# TAS Ceramics Academy at Fort Richardson

By David Yelacic

The Texas Archeological Society's Academy Committee began as a way to provide the membership with training that was not accessible to everyone attending field schools, as well as a way to recruit membership by hosting weekend-long workshops several times a year throughout the State of Texas. For 2017, one of the classic academy topics, ceramics, received a freshening up through the efforts of first time Ceramics Academy instructor, Dr. Chris Lintz, and longtime instructor, Marybeth Tomka. Given Chris' enthusiasm and expertise, he was the ideal candidate to join the group, and all the credit for the decision to include Chris goes to Marybeth and Jimmy Barrera, Chair of the Academy Committee. Additionally, Becky Shelton of the Texas Historical Commission demonstrated her talents as a potter for the first time with the academy program. The new instructors were well-received!

Over the past couple of years, the Academy Committee has pushed to host academies at State Parks. This year, Fort Richardson State

Park and Historic Site in Jacksboro was the destination. North Texas and specifically the DFW area were the target for the 2017 Ceramics Academy, and Fort Richardson was a logical choice. The Historic Site was fitting, the park facilities and staff were exceedingly accommodating, and the Friends of Fort Richardson provided some of the best meals that have been served at an academy—seriously.

Overall, the 2017 Ceramics Academy was able to draw in several new members to the Texas Archeological Society, and it is safe to say that everybody learned something new, even the instructors. We walked away very pleased with how it all went and excited to continue with some of the experiments in ceramic technology started at the Academy. And we are looking forward to the last academy of 2017, Technology in Archeology, to be hosted in central Texas at the Hill Country University Center and Fort Martin Scott in Fredericksburg on April 29-30 (registration deadline is April 14th).



**(L-R) Jimmy, Becky, David, Marybeth and Chris**

*Photo by C. Erwin (CE)*

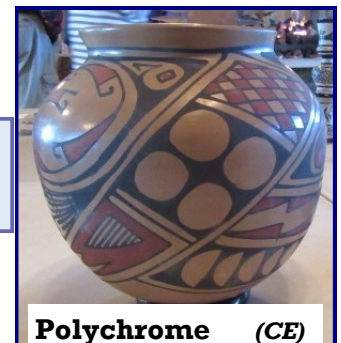


**Mexican Stamped(CE)**

**Pots provided by Chris Lintz**

**Thanks to Larry for sharing his photos!**

*Continued on Page 5*



**Polychrome (CE)**



# Photos from TAS Academy at Fort Richardson

*Continued from Page 4*



**Chris Lintz** Photo by Larry Galbiati (LG)



**Marybeth Tomka** (LG)



**Jimmy Barrera** (LG)

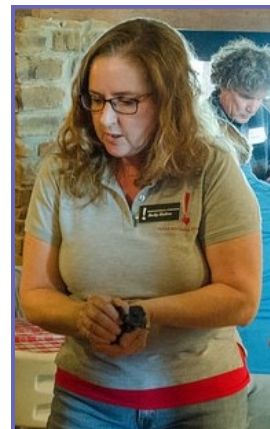


**Chris and Larry Galbiati** (CE)

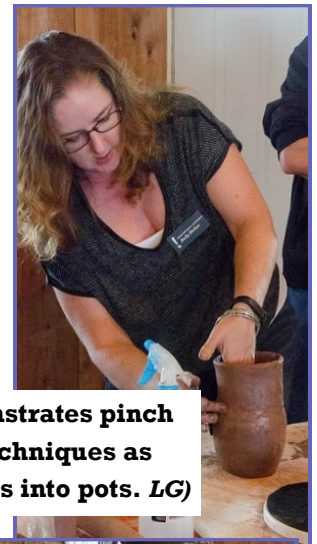


**David Yelacic** (LG)

*Thanks and kudos to the Academy Committee! Together you created a real "hands-on" event, with fire, clay and triple loops!*



**Becky Shelton demonstrates pinch pot basics and coil techniques as she builds clay blocks into pots.** (LG)



**Miranda** (CE)



**Daniel** (CE)



**Daniel's Pinch Pot** (CE)



**Lloyd & Charlene** (LG)



# Newberry Cabin Project: Cattle Impact Site

By Katrina Nuncio

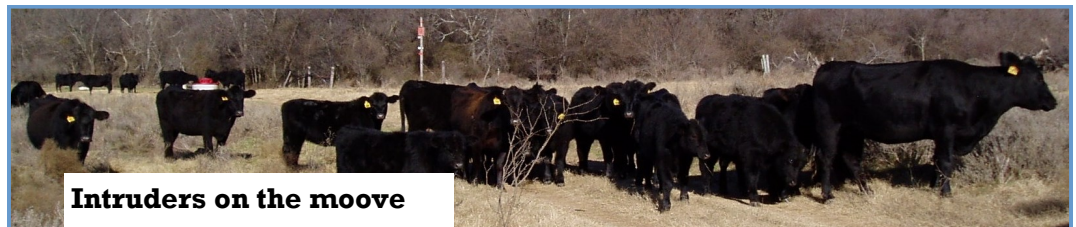
As many of you know, I am still teaching the Introduction to Archeology class at Weatherford College this spring semester. As was my fall class, this class is also connected to the excavation of the 1870s historic Newberry Log Cabin site in Millsap. Throughout this spring, my class and TCAS will have several scheduled excavation days (all depending upon the current weather for that day). More excavation days may be scheduled if time permits. If you are interested in working at this site, please put your name on the signup sheet at the March meeting or email me at [www.tarrantarch.org](http://www.tarrantarch.org). I will make directions available at the meeting or I can email them to you if you can't make the meeting. **The current list of excavation days are as follows:**

**Saturday, March 11**  
**Friday, March 31**

**Saturday, April 8**  
**Friday, April 21**

Our first excavation day this year was on January 27 and we had a huge surprise when we arrived at the site. The gentleman who leases the land where the Cabin sits had placed around 50 to 60 head of cattle on the land which is his right but it created a huge problem for us.

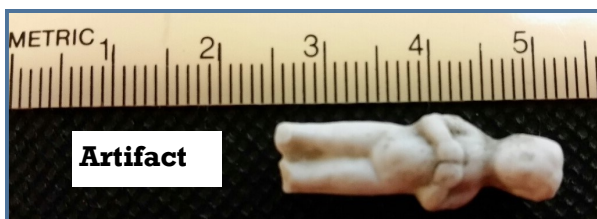
The cattle had designated the area around the Cabin as a good area to bed down. These actions trampled our excavation units and let's just say that this particular area is now well fertilized.



Many thanks to Art Tawater and Mike Shannon who arrived early at the site and did some major cleanup along with trying to recover as much integrity of the units as possible. Before we left the site that day, Dean Hungate who is with the Doss Heritage and Culture Center, brought out some temporary fencing which was placed around our units in hopes of keeping the cattle from creating further destruction. Plans are being made to enlarge the fenced area to encompass the entire cabin perimeter.



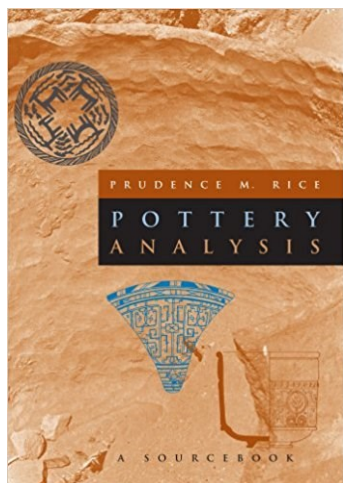
Despite this set back, we had a very productive excavation day at the Cabin. Participating were TCAS members **Art Tawater, Mike Shannon, Bret Williamson, Lori Gouge, Miranda Davenport, Daniel Davenport**, and myself. My four students from Weatherford College quickly learned the basics of excavation and had a great time. Please see the accompanying pictures of the participants and a very interesting artifact.



Photos by Katrina Nuncio



**Celebrate Women's History Month**



March is Women's History Month. Expand your personal library and celebrate the contributions of archeologist Prudence Rice by purchasing her book, *Pottery Analysis: A Source Book* (University of Chicago Press, 1987). This body of work is cited in the manual for the 2017 TAS Ceramics Academy, *Ceramics, The Stories Found in Pottery* by Harry J. Shafer, Christopher Lintz and Marybeth Tomka, (Page 34) as "the most comprehensive reference available on archeological ceramics."

Another way to remember and celebrate the contributions of women archeologists is a click away at: <https://womenshistorymonth.wordpress.com/resources/women-and-series/women-and-the-sciences/women-and-archaeology/>

**Technology in Archeology TAS Academy 2017**

**Technology in Archeology Academy, Fredricksburg, Date: April 29-30, 2017**

**Registration Deadline: April 14,2017**

**Registration form and more info in the March issue of *Texas Archeology* or :**

<http://txarch.org/Activities/academy/aa2017/index.php>

**Check out the TAS Student Scholarships at**

<http://www.txarch.org/scholarships/diversity.php>

**Check out the TCAS Student Scholarships at [www.tarrantarch.org](http://www.tarrantarch.org)**



**What: 2017 TAS  
Field School**

**Where: Camp Wood**

**When: June 10-17, 2017**

**A Return to Colonial Times  
with PI Dr. Tamra L. Walter**

**Historic sites: Mission San Lorenzo de la Santa Cruz and  
Camp Wood Military Outpost**



**What: 88th TAS  
Annual Meeting**

**Where: Embassy Suites,  
Grapevine**

**When: October 20-22, 2017**

**Host: Tarrant County Archeological  
Society - yes, that is us! TCAS volun-  
teers are needed! Sign-up forms are  
available at the monthly meetings.  
Plan now to be a part of the fun.**

# TCAS: Preserving the Past for the Future

## TCAS BOARD

Chris Meis  
President

Catrina Banks Whitley  
Vice President - Projects

Lloyd Erwin  
Secretary

James Everett  
Historian

Bryan Jameson  
Vice President

Dana Ritchie Parker  
Treasurer

Katrina Nuncio  
Immediate Past President

Gen Freix  
Internet Chair

Charlene Erwin  
Newsletter Editor



Paying your dues is easier than ever this year!



By PayPal: Register and pay online using your PayPal account at the TCAS website,  
[www.tarrantarch.org](http://www.tarrantarch.org)

By mail: Complete the application below and mail it with your check to:  
Tarrant County Arch Society, PO Box 24679, Fort Worth, TX 76124

In person: Give your dues and completed application to Lloyd Erwin at the monthly meetings.



March, 2017

### TARRANT COUNTY ARCHEOLOGICAL SOCIETY (TCAS) MEMBERSHIP APPLICATION FORM

Name(s) \_\_\_\_\_

Type of Membership and Fee

Address \_\_\_\_\_

New \_\_\_\_\_ Renewal \_\_\_\_\_

City\State\Zip \_\_\_\_\_

\_\_\_\_\_ Individual \$20 \_\_\_\_\_ \$10 USPS Mail Fee

Preferred Phone \_\_\_\_\_

\_\_\_\_\_ Family \$25 \_\_\_\_\_ \$10 USPS Mail Fee

Email Address \_\_\_\_\_

\_\_\_\_\_ Student \$10 (**enrolled in grade school through college/university whose coursework is considered to be half time or more**)

I want my newsletter delivered by \_\_\_\_\_ email or \_\_\_\_\_

\_\_\_\_\_ Contributing \$30 \_\_\_\_\_ \$10 USPS Mail Fee

by USPS mail. Thank you for choosing delivery by email.

\_\_\_\_\_ Optional Memorial Fund Contribution

Membership Term: January to December

**Code of Ethics (signature required):** I PLEDGE THAT I WILL NOT INTENTIONALLY VIOLATE THE TERMS AND CONDITIONS OF ANY FEDERAL, STATE, OR LOCAL ANTIQUITIES STATUTES CONCERNING CULTURAL RESOURCES OR ENGAGE IN THE PRACTICES OF BUYING OR SELLING ARTIFACTS FOR COMMERCIAL PURPOSES OR ENGAGE IN THE WILLFUL DESTRUCTION OR DISTORTION OF ARCHEOLOGICAL DATA OR DISREGARD PROPER ARCHEOLOGICAL FIELD TECHNIQUES. I UNDERSTAND THAT FAILURE TO FOLLOW THESE GUIDELINES WILL PROVIDE GROUNDS FOR EXPULSION FROM THE SOCIETY.

Signature \_\_\_\_\_

Date \_\_\_\_\_