

# TRACT NO. 854 PRINCETON BY-THE-SEA ADDITION NO. 1

IN UNINCORPORATED TERRITORY BEING A PORTION OF RANCHO CORRAL DE TIERRA PALOMARES  
CALIFORNIA  
WILSEY & HAM

MAY 1968

### OWNER'S CERTIFICATE

WE HEREBY CERTIFY THAT WE ARE THE OWNERS OF OR HAVE SOME RIGHT TITLE OR INTEREST IN AND TO THE REAL PROPERTY INCLUDED WITHIN THE SUBDIVISION SHOWN UPON THIS MAP, AND THAT WE ARE THE ONLY PERSONS WHOSE CONSENT IS NECESSARY TO PASS A CLEAR TITLE TO SAID PROPERTY, AND WE CONSENT TO THE MAKING OF SAID MAP AND SUBDIVISION AS SHOWN WITHIN THE BLUE BORDER LINES. WE HEREBY DEDICATE TO PUBLIC USE ALL DRIVES, BOULEVARDS, AVENUES AND COURTS AS SHOWN UPON SAID MAP WITHIN SAID SUBDIVISION.  
WE ALSO HEREBY DEDICATE FOR PUBLIC USE EASEMENTS FOR PUBLIC UTILITIES AND DRAINAGE UNDER, ON, OR OVER THOSE CERTAIN PARCELS OF LAND DESIGNATED "D.U." (PUBLIC UTILITY EASEMENT) AND "D.E." (DRAINAGE EASEMENT) AS SHOWN ON SAID MAP WITHIN SAID SUBDIVISION, SAID PARCELS OF LAND TO BE KEPT OPEN AND FREE FROM BUILDINGS AND STRUCTURES OF ANY KIND.

AS OWNED  
HENRY DOELGER BUILDER INCORPORATED, A CALIFORNIA CORPORATION  
*Henry Doelger*  
*Secretary*

COUNTY OF SAN MATEO, STATE OF CALIFORNIA  
ON THIS 13th DAY OF APRIL, 1968, BEFORE ME THE CLERK OF SAID COUNTY, A NOTARY PUBLIC IN AND FOR THE COUNTY OF SAN MATEO, STATE OF CALIFORNIA, RESIDING THEREIN, DULY COMMISSIONED AND SWORN, PERSONALLY APPEARED EDWARD K. LING, KNOWN TO ME TO BE THE VICE-PRESIDENT, AND HELEN KESSELMAN, KNOWN TO ME TO BE THE SECRETARY OF HENRY DOELGER BUILDER INCORPORATED, THE CORPORATION THAT EXECUTED THE WITHIN INSTRUMENT AND KNOWN TO ME TO BE THE PERSONS WHO EXECUTED THE SAME UPON BEHALF OF THE CORPORATION NAMED THEREIN AND ACKNOWLEDGED TO ME THAT SUCH CORPORATION EXECUTED THE SAME.  
IN WITNESS WHEREOF, I HAVE HEREUNTO SET MY HAND AND AFFIRMED MY OFFICIAL SEAL THE DAY AND YEAR IN THIS CERTIFICATE FIRST ABOVE WRITTEN.  
MY COMMISSION EXPIRES OCT. 11, 1971  
*Edward K. Ling*  
*Notary Public*

NOTARY PUBLIC IN AND FOR THE COUNTY OF SAN MATEO, STATE OF CALIFORNIA

### SURVEYOR'S CERTIFICATE

WILLIAM B. WRIGHT LICENSED SURVEYOR IN THE STATE OF CALIFORNIA, HEREBY CERTIFY THIS MAP CONSISTING OF 4 SHEETS CORRECTLY REPRESENTS A SURVEY MADE UNDER MY SUPERVISOR DURING THE MONTH OF FEBRUARY 1965 THAT THE SURVEY IS TRUE AND COMPLETE AS SHOWN. THAT THE MONUMENTS ARE OF THE CHARACTER AND WILL OCCUPY THE POSITIONS INDICATED AND ARE OR WILL BE SUFFICIENT TO ENABLE THE SURVEY TO BE REPEATED. SAID MONUMENTS WILL BE SET, ON OR BEFORE DECEMBER 31, 1968 PRIOR TO THE ACCEPTANCE OF IMPROVEMENT BY THE COUNTY OF SAN MATEO.  
DATED NOVEMBER 13, 1968  
*William B. Wright*  
*Surveyor*



WILLIAM B. WRIGHT 25 20117, STATE OF CALIFORNIA

### COUNTY ENGINEER'S CERTIFICATE

I, DON S. WILSON, COUNTY ENGINEER OF THE COUNTY OF SAN MATEO, HEREBY CERTIFY THAT I HAVE EXAMINED THIS MAP, THAT THE SUBDIVISION AS SHOWN HEREON IS SUBSTANTIALLY THE SAME AS IT APPEARED ON THE TENTATIVE MAP AND ANY APPROVED ALTERATIONS THEREOF AS APPROVED BY THE SAN MATEO COUNTY PLANNING COMMISSION ON MAY 28, 1968. THAT ALL PROVISIONS OF THE CALIFORNIA SUBDIVISION MAP ACT, AS AMENDED, AND OF SAN MATEO COUNTY ORDINANCE 595, APPLICABLE AT THE TIME OF APPROVAL OF THE TENTATIVE MAP HAVE BEEN COMPLIED WITH AND THAT I AM SATISFIED THAT THIS MAP IS TECHNICALLY CORRECT.  
DATED APRIL 4, 1968  
*Don S. Wilson*  
*County Engineer*

COUNTY ENGINEER OF SAN MATEO COUNTY, STATE OF CALIFORNIA

### CERTIFICATE OF CLERK OF BOARD OF SUPERVISORS

I, MARVIN CHURCH, CLERK OF THE BOARD OF SUPERVISORS OF SAN MATEO COUNTY, STATE OF CALIFORNIA, HEREBY CERTIFY THAT SAID BOARD APPROVED THE WITHIN MAP ON THE 8th DAY OF APRIL 1968 AND ACCEPTED ON BEHALF OF THE PUBLIC ALL DRIVES, BOULEVARDS, AVENUES, COURTS AND ALL PUBLIC UTILITY EASEMENTS, AND DRAINAGE EASEMENTS IN CONFORMITY WITH THE TERMS OF THE OFFER OF DEDICATION.  
*Marvin Church*  
*Clerk*

EX-OFFICIO CLERK OF THE BOARD OF SUPERVISORS AND COUNTY CLERK-RECORDER OF THE COUNTY OF SAN MATEO, STATE OF CALIFORNIA.

BY DEPUTY

### COUNTY RECORDED'S CERTIFICATE

FILE NO. 2000MAC - FEE \$ 10.00 PAID  
FILED FOR RECORD AT THE REQUEST OF TITLE INSURANCE AND TRUST COMPANY THIS 15th DAY OF APRIL 1968 AT 32 MINUTES PAST 10 A.M. IN VOLUME 69 OF MAPS AT PARAG. 20 21 22 23 IN THIS OFFICE OF THE COUNTY RECORDER OF SAN MATEO COUNTY, CALIFORNIA

MARVIN CHURCH, COUNTY CLERK-RECORDER  
BY DEPUTY *John H. Hildebrand*

### SOILS REPORT

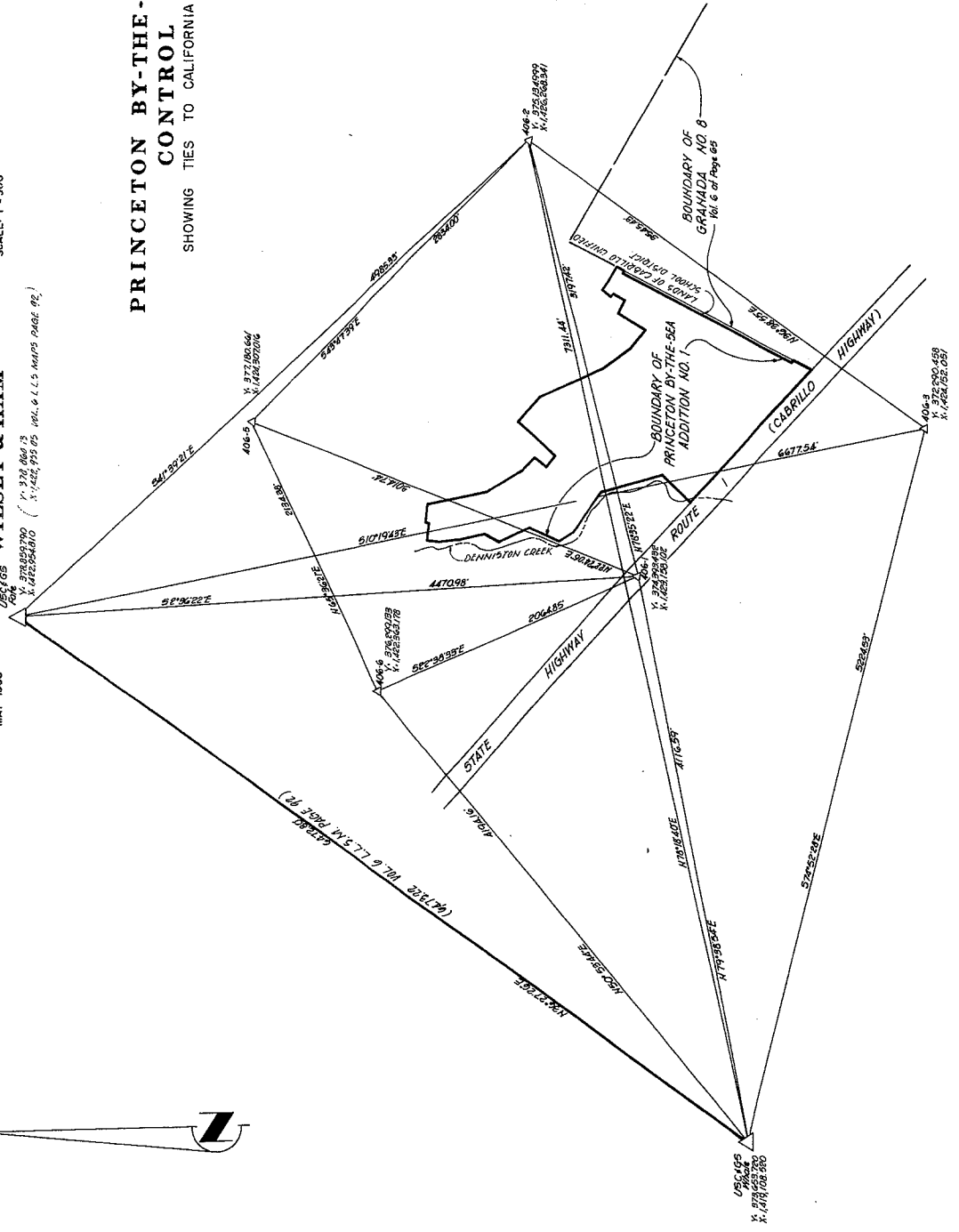
A SOILS REPORT HAS BEEN PREPARED BY THE FIRM OF GOODENO, JACOBS, JONES & ASSOCIATES, DATED 13, MAY, 1968, AND SIGNED BY R.E. JONES  
REGISTERED CIVIL ENGINEER, CERTIFICATE NO. 55, 9283, STATE OF CALIFORNIA

# TRACT NO. 854 PRINCETON BY-THE-SEA ADDITION NO. 1 IN UNINCORPORATED TERRITORY SAN MATEO COUNTY CALIFORNIA

MAY 1968  
WILSEY & HAM  
SCALE: 1" = 500'

USCG 165  
N. 372 044.15  
E. 1424.307016  
X. 422254810  
Y. 28859790

## PRINCETON BY-THE-SEA ADDITION NO. 1 CONTROL DIAGRAM SHOWING TIES TO CALIFORNIA COORDINATE SYSTEM ZONE III



**LEGEND**  
 △ indicates U.S.C.G.S. monument  
 △ indicates set 41-Tra App with log L.S. 2917

**BAISIS OF BEARINGS**  
 The California State Plane Zone III has been used as the basis of bearings. All bearings given are true bearings. All distances given are grid distances. To convert grid distances to ground distances, multiply grid distance by scale factor 1.000076.

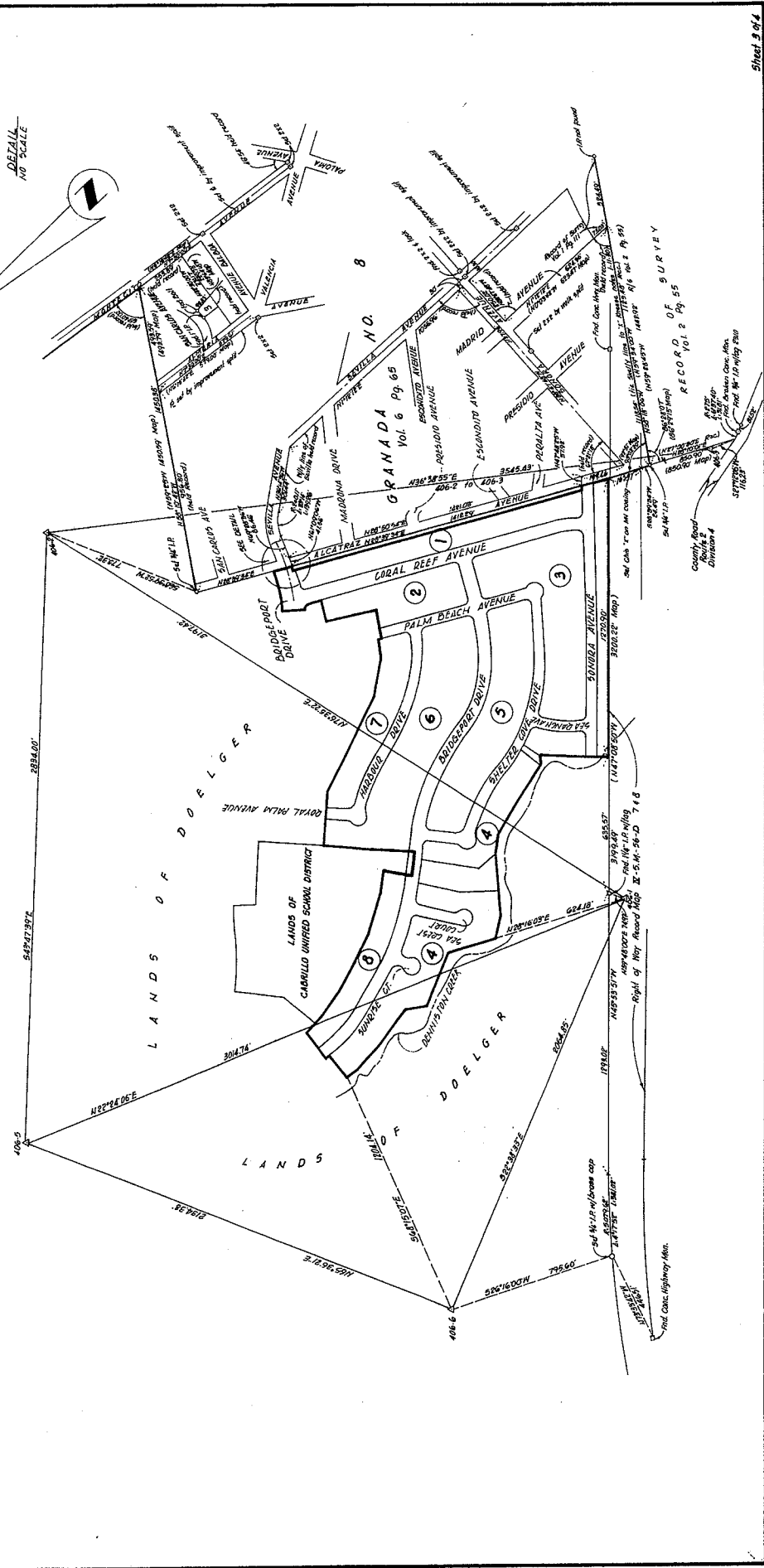
# TRACT NO. 854 PRINCETON BY-THE-SEA ADDITION NO. 1

SAN MATEO COUNTY  
MAY 1988  
WILSEY & HAM  
CALIFORNIA  
SCALE: 1" = 300'

## SURVEY CONTROL DIAGRAM

**BASIS OF BEARINGS**  
The California Geodetic System, Zone 5, has been used as the basis of bearings. All bearings given are true bearings. All distances given are true distances. To convert Grid Distance to True Distance, multiply Grid Distance by 0.999706.

Bearings in parentheses are map bearings.



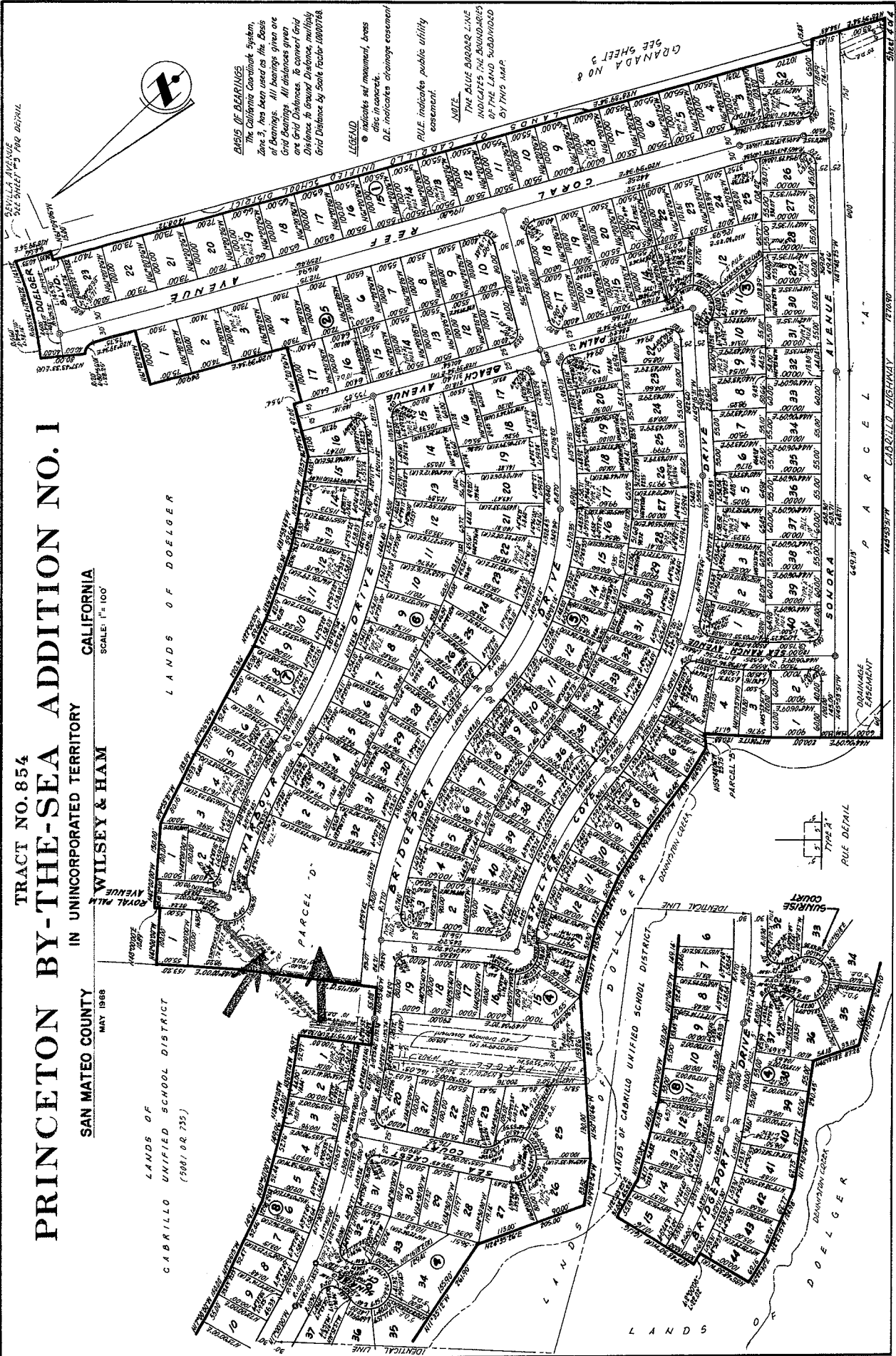
# TRACT NO. 854 PRINCETON BY-THE-SEA ADDITION NO. 1 IN UNINCORPORATED TERRITORY WILSEY & HAM

CALIFORNIA  
SCALE: 1" = 100'

SAN MATEO COUNTY  
MAY 1988

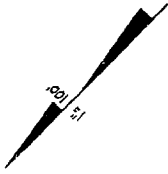
LANDS OF  
CABRILLO UNIFIED SCHOOL DISTRICT  
(S001.0.0.235)

LANDS OF DOELGER



Description: San Mateo, CA Tract Map 69.20 Selection from page 4  
Order: ml Comment:

37-33



BK-47  
5

SEVILLA AVE

ALCATRAZ AVE.

DOELGER BLVD.

CORAL REEF

AVE 13

AVE 14

PALM

BEACH

AVE 15

TAX CODE AREA

32

34

34

ROYAL

PALM AVE

HARBOR

PARCEL D

BRIDGEPORT

SHELTER COVE DR

PRINCETON BY-THE-SEA ADDITION NO. 1 RSM 69/20-23