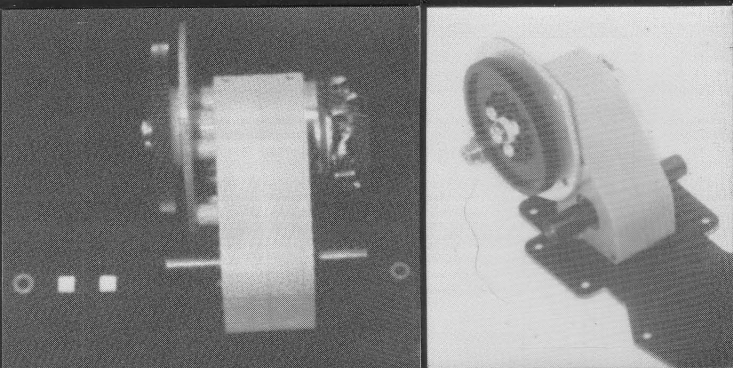
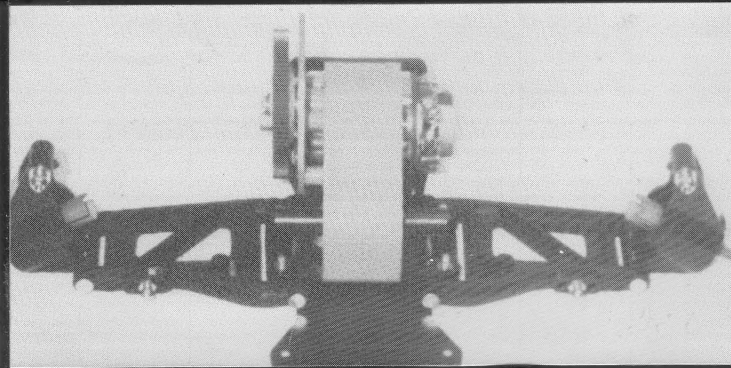


READ THRU DIRECTIONS BEFORE STARTING ASSEMBLY

TAMIYA KING CAB & TOYOTA HI-LUX INSTALLATION INSTRUCTIONS



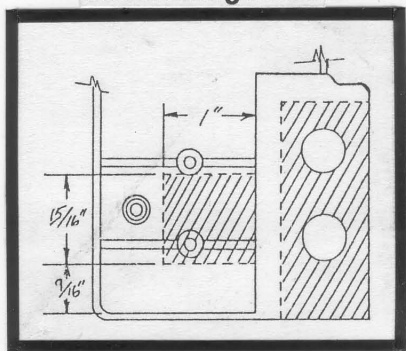
STEP 1: Remove "O" rings out of stock tranny outdrives. Place the two white spacers supplied with L/W 2 inside the right side outdrive (side with 3-48 nut in it). Now place one of your stock "O" rings inside each of the L/W 2 outdrives, and mount tranny to supplied replacement chassis extension #242. Use supplied 8-32 x 3/8" flathead screws in rear and smaller 4-40 x 3/8" flathead screws in front. **For now leave suspension off chassis plate.**



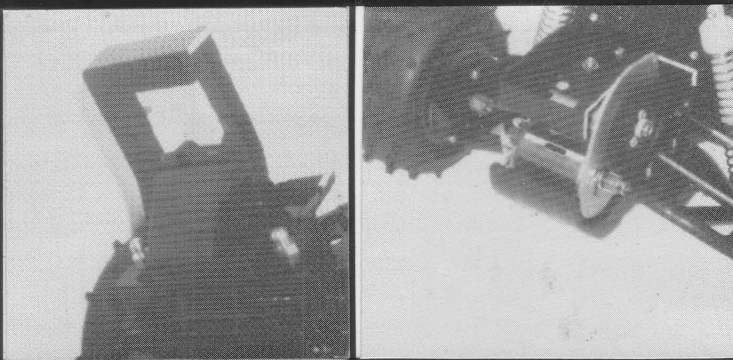
STEP 4: Once you are satisfied with the fit of tranny and chassis plate into tub, install rear suspension to supplied chassis plate following stock installation instructions with stock screws and nuts.

STEP 2: Remove stock plate with tranny and suspension, shocks, shocktower, and stock speed control resistors from tub chassis. Use a hack saw or hobby saw to cut off the part of the tub chassis that overhangs the stock tranny gear cover located at right rear of chassis. **Do not cut it all off, leave about 1/4" of it, and trim to a clean edge with hobby knife.**

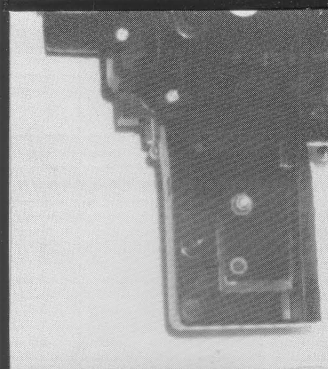
See drawing below



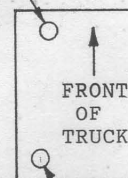
TO CUT OUT SQUARE HOLE FOR TOP OF TRANNY



STEP 3: Use the drawing above as reference for measurements and scribe outline of hole to be cut onto top of chassis. **Note:** This is a final trimming mark so do your rough cuts about 1/16" inside of lines. To start the cutting, drill 1/4" holes close to the inside of corners of square. Then cut from hole to hole using a small hobby saw or a pair of wire cutters will do the job. Now trim plastic out to scribed line on tub with hobby knife. You need to trim front edge of hole at an angle going forward towards the bottom of the chassis to match the top front part of tranny case. Also some of the horizontal part of tub at right of hole needs to be cut upward by about 1/8" to 3/16". **For a nice clean fit of tranny into tub, put tranny and chassis plate in place and trim tub to a good fit. You're done when tranny goes in and chassis plate is completely flush with bottom of tub.** Your tub should look like the one pictured below.



1/8" HOLE FOR MOUNTING TO CHASSIS

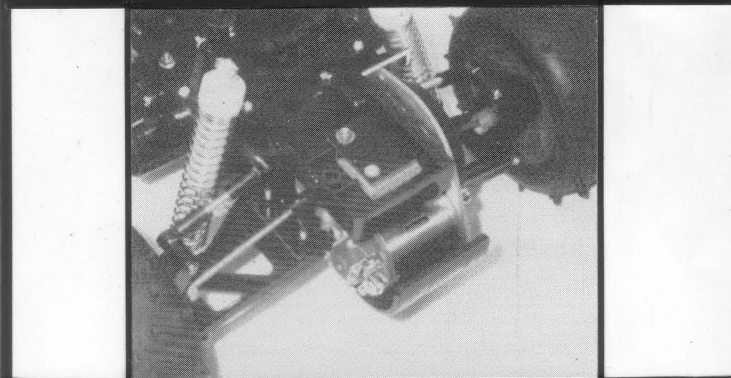


TRANNY TO CHASSIS TOP BRACE

1/8" HOLE FOR MOUNTING TO TOP OF TRANNY

TRANNY TOP BRACE INSTALLATION

STEP 5: Take the supplied 3 x 8mm screw and place it up through the bottom of tub (in the remaining stock top brace hole). Place the top brace #241 (with countersink in rear hole facing up) over screw and secure it in place using the supplied 3mm Nylock nut.



STEP 6: Now mount the completed chassis plate assembly to the tub chassis using stock screws and nuts. Slide the supplied yellow spacer between tranny and top brace, then secure top brace to tranny with supplied 4-40 x 3/8" flathead screw. Replace dog bones and reassemble rear suspension as you had it. **Note: Check dog bones for binding through full travel of rear suspension, it may be necessary to limit travel of rear shock and not use the inner most hole in arm for mounting of shock to stop binding.** Your extra "O" rings are good for shock limiting. Put them inside of shock on shaft below pistons. Any binding will greatly increase wear of all related parts and increase possibility of their breakage while greatly reducing performance and speed of truck.

SPECIAL NOTE: Beginner hobbyist may need the help of an experienced hobbyist, or adult to cut tub chassis correctly.