

INSTRUCTIONS FOR ASSEMBLY OF A & L REAR SUSPENSION TO RC-10 ALUMINUM TUB

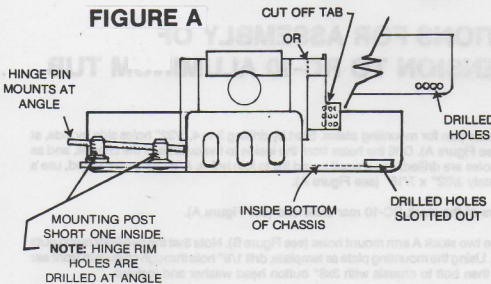
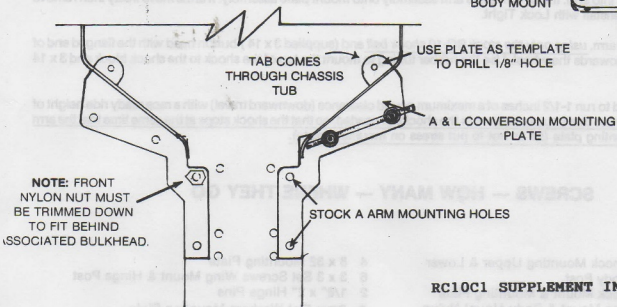
1. First step is to make slots in rear of chassis pan for mounting plates. Start by drilling 3 to 4, 3/32" holes side by side, at bottom of outside upright of chassis (see Figure A). Drill the holes from the inside to the outside of the chassis, and as close to the bottom as possible. After holes are drilled, use a small round file to join holes. After holes are joined, use a small flat file to make a slot approximately 3/32" x 7/16" (see Figure A).
2. Next, cut off the ball link mounting ears of the stock RC-10 rear Bulkhead (see Figure A).
3. Bolt mounting plate to chassis, using the two stock A arm mount holes (see Figure B). Note that the two front nylon nuts must be trimmed to fit next to Bulkhead. Using the mounting plate as template, drill 1/8" hole through chassis in front ear of mounting plate (see Figure B), and then bolt to chassis with 3x8" button head washer and locknut.
4. Mount A & L shock tower in place of stock. Mount A & L shock blocks, body mount, and wing mounts to shock tower (see Figure C).
5. Mount suspension hinge post to mounting plates. Note that posts are at different heights, with the shorter post going in board and holes are drilled at an angle (see Figure A).
6. Install arm onto mounting plate assembly with 1/8 hinge pin. Check the arm to make sure that it swings freely. When the arms move freely, install set screws into post and re-check play. Take arm off post, then install stock RC-10 bearings into suspension arm. Note that it may be necessary to use small pliers to press bearings into arm. Install stock RC-10 axle and dogbone into arm. Install complete arm assembly onto mount plate assembly. If arms move freely then remove set screws and reinstall with Lock Tight.
7. Install shock onto arm, using only the stock RC-10 shock ball and (supplied 3 x 14) button head with the flanged end of shock ball going towards the wheel. Use the rubber tubing to mount the top of the shock to the shock block and 3 x 14 mm button head.
8. It is recommended to run 1-1/2 inches of a maximum ground clearance (downward travel) with a race ready ride height of 1 inch. We also advise that you put limiters in the shocks (if needed) so that the shock stops at the same time that the arm stops on the mounting plate (so as not to put stress on mounting plate).

SCREWS — HOW MANY — WHERE THEY GO

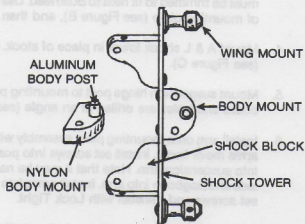
4 3 x 14 Shock Mounting Upper & Lower
1 3 x 10 Body Post
6 3 x 8 Shock Mount & Mounting Plate
4 3 x 6 Wing Mount & Body Mount Nylon
4 4 x 6 Hinge Post

4 8 x 32 Mounting Plate
6 3 x 3 Set Screws Wing Mount & Hinge Post
2 1/8" x 2" Hinge Pins
2 3mm Flat Washers Mounting Plate

THANK YOU FOR USING OUR PARTS!
GOOD RACING
Chris Allec and Daryl Lane

FIGURE A**FIGURE B****FIGURE C**

SHOCK TOWER ASSEMBLY TOP VIEW

**RC10C1 SUPPLEMENT INSTRUCTIONS**