

PRO TUNNEL

CONVEYOR EQUIPMENT

• ROLLERS • CHAINS • SPROCKETS • IDLERS • CUSTOM TUNNEL EQUIPMENT • ALL CONVEYOR/TUNNEL TYPES SUPPORTED

ptpusa.net | 877.334.2279

ROLLERS

- Advanced Plastics Formulated specifically for the Car Wash Environment
- Low Maintenance
- Reduced Cost Per Wash- Maximize service life
- Strict Industrial Quality Standards
- Customer/ Engineering Services
- Stand behind our work, period



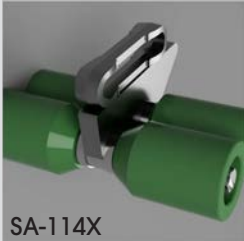
VER-4006

VALUE ENGINEERED ROLLER SERIES *NEW

- Quick on-site rebuild
- Corrosion Resistant Components Available
- Maximum Wear Reduction
- Advanced Plastics, Formulated for the Car Wash Environment
- Competitively Priced



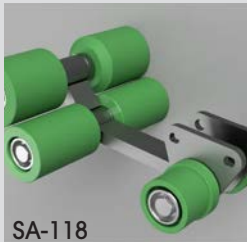
SA-113X



SA-114X



SA-114L



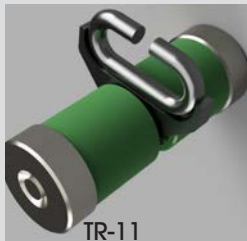
SA-118



SA-119



TR-10



TR-11



TR-14



TR-2



TR-18



TR-27



TR-30

*NEW DRIVE CHAIN

- Engineered for the car wash environment, standard along with a one piece casting adding a multitude of advantages over any carbon or stainless alternative
- Operating Cost reduction
- Reduced wear rates with economic guarantees
- Available in Carbon and stainless steel

*NEW



PTC-LOG

PTC-LOG

- Square faced chain, hybrid to the log chain increasing surface area reducing wear rate on sliding and bearing surface areas between each link
- Available in superior Alloy steel materials, heat treatments increasing strength and hardness levels
- Stainless steel available to maximize corrosion resistance and chemical attack

*NEW



PTC-X458

PTC-X458

- For environments seeking extended service life and corrosion/chemical resistance with x458 chain
- Chains cast in several austenitic, martensitic and stainless steels to meet application requirements

*NEW



PTC-188

PTC-188

- Cast in both Alloy and Stainless steel
- Available in one piece construction maximizes integrity and strength
- Reduces number of components per link
- For pressed bush type it removes chemical attack and potential link plate failure/fatigue
- One piece integral casting
- Increasing surface area reducing wear rate on sliding and bearing surface areas between each link
- Consistency of product - manufactured to strict quality standards
- Chains pull tested to destruction with results beyond industry standard
- Car throughput increased
- Lowering the cost of ownership - minimal maintenance and downtime, economic guarantees, longer life

SPROCKETS/IDLERS

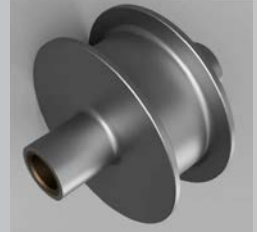
*NEW



PTC-12T



PTC-IDLER-12T



IDLER DRUM

*NEW



PTC-LOG-5T

- One piece integral casting
- No welding of lug on teeth, removing chemical attack of internal and external weld
- Optional Taper or Keyless Locking Device
- Reduced wear rates with economic guarantees
- Available in Carbon and Stainless Steel

ptpusa.net

877.334.2279

