

QHW 24 High Precision Scale



Multifunctional Industrial Scale with High Capacity

Features



* High Resolution, Upgrade up to 1/300,000

The QHW series combines the latest weighing chip with new developed software offering a competitive performance weighing, internal resolution is up to 4 million divisions, external resolution is up to 300,000 divisions.

* Higher Cost Performance

We break the technical bottleneck in traditional analog load cell and offer the advantage of comprehensive linearity and temperature compensation, which provide users competitive performance at an economical price.

* Compact Design, Easy to Operate

Durable construction, large weighing surfaces with stainless steel pan, that is easy to clean, the balance is equipped with an easy-to-read, white bright backlight display, which make it incredibly easy to operate.

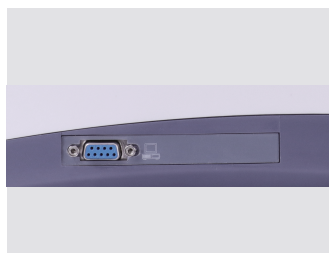
* Multifunctional Use For a Variety of Applications

QHW series offering high accuracy and repeatability, it is equipped with basic weighing, check weighing, accumulation, parts counting and percentage weighing for applications in production, industrial and warehouse settings.



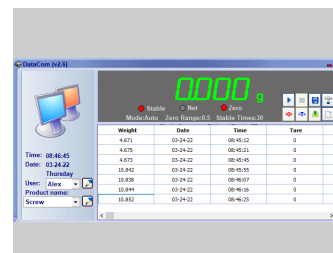
HBM High Precision Load Cell

The balance is equipped with HBM high precision load cell, it is extremely accurate and durable, ensures that the balance provide a reliable results.



Easy Communication

The balance can also be connected printers or PC via its standard RS-232 port for data transfer, making it ideal for routine weighing applications.



DC500 Back Office Management Software

DC500 PC software allows you to transfer data in real time, compatible with microsoft windows.

QHW 24 High Precision Scale

Technical Data



Item	Specification
Model	QHW 24
Capacities	30 kg
Readabilities	0.1 g
Max. Divisions	300,000d
Pan Size	230 x 300mm
Power Supply	Input :100~240VAC 50~60Hz, Output: DC 12V 500mA
Battery	6V 4Ah lead acid rechargeable battery
Display	24mm digit LCD display with white LED backlight
Interface	RS232
Housing	ABS plastic housing, Stainless steel pan
Keyboard	7 membrane keys
Units	g/g(hi resolution)/ct/lb/oz/d/gn/ozt/dwt/mom/tl.t/tl.h/tlj/t/bt/n
Applications	Basic weighing, Parts counting, Percent weighing, Accumulation
Option	Bluetooth 5.0 , Under hook
Net Weight	4.2 kg
Gross Weight	5.1 kg
Volume	0.033m ³
Dimension (W x D x H)	315 x 350 x 120mm
Packaging (W x D x H)	445 x 365 x 205mm±3mm
Operating Conditions	Temperature : 5°C~35°C, Humidity : 5%~85% R.H.

Dimension(mm)

