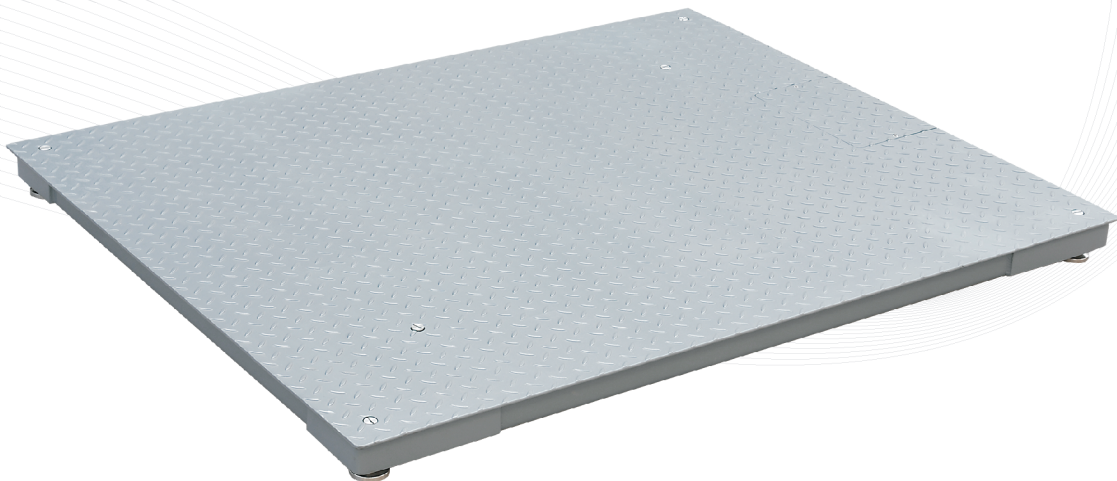


TF/TFS Floor Scales

General Specifications

- | | |
|------------------|--|
| • Capacities | 1t~5t |
| • Housing | Mild steel/Stainless steel |
| • Max. Divisions | 3,000e |
| • Load cell | 4 x 350ohms |
| • Operate Temp | -10°C~+40°C |
| • Packing | Wood box or Paper pallet(with indicator) |



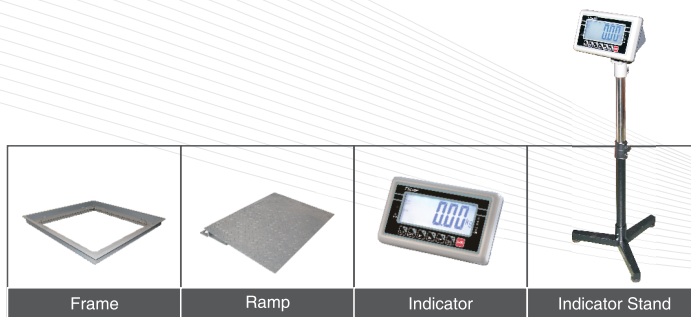
- Four load cells
- Adjustable SST leveling feet
- Easy access SST junction box
- Mild steel (TF) or stainless steel(TFS) selectable
- OIML approved load cell
- Optional Ramp (80cm), Frame, Weighing indicator and Indicator stands



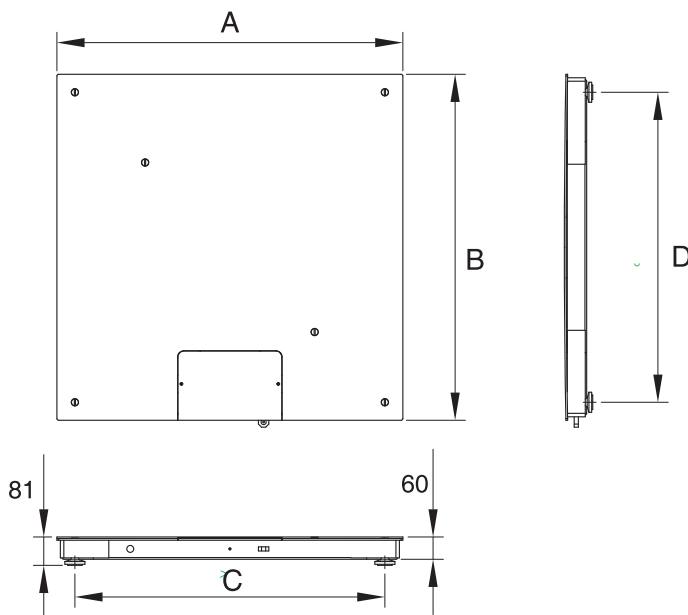
TF/TFS Floor Scales

Model Name	Capacity	Readability	Division	Approx. weight	Approval
TF/TFS-1010-1t	1t	0.5 kg	2,000e	106kg	CE, OIML
TF/TFS-1010-2t	2t	1kg	2,000e	106kg	CE, OIML
TF/TFS-1012-1t	1t	0.5 kg	2,000e	120kg	CE, OIML
TF/TFS-1012-2t	2t	1kg	2,000e	120kg	CE, OIML
TF/TFS-1012-3t	3t	1kg	3,000e	120kg	CE, OIML
TF/TFS-1212-1t	1t	0.5kg	2,000e	140kg	CE, OIML
TF/TFS-1212-2t	2t	1kg	2,000e	140kg	CE, OIML
TF/TFS-1212-3t	3t	1kg	3,000e	140kg	CE, OIML
TF/TFS-1215-1t	1t	0.5kg	2,000e	145kg	CE, OIML
TF/TFS-1215-2t	2t	1kg	2,000e	145kg	CE, OIML
TF/TFS-1215-3t	3t	1kg	3,000e	145kg	CE, OIML
TF/TFS-1515-1t	1t	0.5kg	2,000e	173kg	CE, OIML
TF/TFS-1515-2t	2t	1kg	2,000e	173kg	CE, OIML
TF/TFS-1515-3t	3t	1kg	3,000e	173kg	CE, OIML
TF/TFS-1515-5t	5t	2kg	2,500e	173kg	CE, OIML

Options



Dimensions(mm)



	10x10	10x12	12x12	12x15	15x15
A (mm)	1000	1000	1200	1200	1500
B (mm)	1000	1200	1200	1500	1500
C (mm)	896	896	1096	1096	1396
D (mm)	896	1096	1096	1396	1396