



CORONADO®

The Leader in Manufactured Stone, Brick and Tile Products



Carolina Rubble - Sandstone



TABLE OF CONTENTS



Industrial Ledge
Shale Grey



Smooth Limestone
Cream



Barn WoodStone
Rustic Farmhouse



Italian Villa®
Volterra



Weathered Edge
Coal Canyon

NEW PRODUCTS

| | |
|----------------------|---|
| Artisan Ledge | 1 |
| Sawtooth Ledge | 2 |

THE CLASSIC SERIES

| | |
|--|----|
| 8" Classic Jerusalem | 5 |
| Smooth Limestone | 6 |
| French Limestone | 7 |
| Chiseled Limestone | 8 |
| Hill Country Limestone | 9 |
| Colosseum Travertine | 10 |
| Aegean Coral, Caribbean Coral | 11 |
| The Getty Stone | 12 |
| Sand Canyon Flagstone, Sand Canyon Honed | 13 |
| Decorative Bands | 14 |

WOODSTONE SERIES

| | |
|--|---------|
| Barn WoodStone, Rough Cut WoodStone, Refined WoodStone ... | 17 - 18 |
|--|---------|

THE DESIGNER SERIES

| | |
|-----------------------------|----|
| Playa Vista Limestone | 21 |
| Amalfi Ledge | 22 |
| 3" Split Limestone | 23 |
| 6" Split Limestone | 24 |
| Prairie Stone | 25 |
| Industrial Ledge | 26 |
| Lennox Stone | 27 |
| The Wave | 28 |

CUT STONE SERIES

| | |
|-------------------------------------|---------|
| Pavilion Stone | 29 - 30 |
| Canyon Cobble & Valley Cobble | 31 |
| Osage | 32 |

VILLA STONE SERIES

| | |
|-----------------------------|---------|
| Venetian Villa® | 35 - 36 |
| Italian Villa® | 37 - 38 |
| Tuscan Villa® | 39 - 40 |
| French Country Villa® | 41 - 42 |

LEDGESTONE SERIES

| | |
|-------------------------------|---------|
| Old World Ledge | 45 - 46 |
| Old Country Ledge | 47 - 48 |
| Pro-Ledge® | 49 - 50 |
| Coronado Honey Ledge | 51 - 52 |
| Quick Stack® | 53 - 54 |
| Virginia Ledge | 55 |
| Sierra Ledge | 56 |
| Eastern Mountain Ledge® | 57 - 58 |
| Rocky Mountain Ledge | 59 |
| Canyon Ledge | 60 |
| Mountain Strip Stone | 61 |
| Coronado Strip Stone | 62 |
| Idaho Drystack | 63 - 64 |
| Weathered Edge | 65 - 66 |



Country Rubble
Aspen



Minnesota Fieldstone
Coastal Brown



Special Used Brick
Rustic Blend



Versailles Travertine
Wheatfield



Flagstone Wall Cap
Lompoc

TABLE OF CONTENTS

ASHLAR & RUBBLE SERIES

| | |
|-----------------------|---------|
| Country Rubble | 69 - 70 |
| Texas Rubble | 71 |
| Carolina Rubble | 72 |
| English Rubble | 73 - 74 |
| Santa Barbara | 75 - 76 |
| Country Castle | 77 |
| Belgian Castle | 78 |

IRREGULAR SHAPED STONE SERIES

| | |
|------------------------------|---------|
| Minnesota Fieldstone | 81 - 82 |
| Appalachian Fieldstone | 83 - 84 |
| Split Fieldstone | 85 |
| Viejo Ranch | 86 |
| River Rock | 87 |
| Creek Rock | 88 |

STONE COMBINATIONS

| | |
|--------------------------|---------|
| Stone Combinations | 91 - 92 |
|--------------------------|---------|

THIN BRICK SERIES

| | |
|--------------------------|-----------|
| Special Used Brick | 95 - 96 |
| Sculptured Brick | 97 |
| Clinker Brick | 98 |
| Belgian Brick | 99 |
| Wirecut Brick | 100 |
| Sicilian Brick | 101 |
| Roman Brick | 102 |
| Weathered Brick | 103 |
| New England Brick | 104 |
| Adobe Brick | 105 - 106 |

FLOOR TILE SERIES

| | |
|-----------------------------|-----|
| Versailles Travertine | 109 |
| Jerusalem Cobble | 109 |
| Italian Tile | 110 |
| Mexican Tile | 110 |
| Belgian Tile | 111 |
| Random Flagstone Tile | 111 |
| River Washed Tile | 112 |
| European Cobble | 112 |

TRIM & ACCESSORIES

| | |
|--|-----------|
| Moldings, Sills, Lintels & Mantels | 115 |
| Window Stones, Trim Stones, Hearthstones & Boxes | 116 |
| Quoins, Wall Caps & Post Caps | 117 |
| Brick Accessories | 118 |
| Grouting Options | 119 - 120 |

TECHNICAL DATA

| | |
|---|-----|
| Coronado Profile Sizes | 123 |
| Stone Color Index & Project Image Credits | 124 |
| Technical Data | 125 |
| Achieving LEED and Green Building Certification | 126 |
| Limited Warranty | 127 |
| Nationwide Manufacturing | 128 |



Artisan Ledge - Cypress Point



Sawtooth Ledge - Silver Ash



Artisan Ledge
Huron



Artisan Ledge
Falmouth



Artisan Ledge
Cathedral Grey



Sawtooth Ledge
Mount Vernon



Sawtooth Ledge
Northland



Sawtooth Ledge
White



THE CLASSIC SERIES

These alluring oversized tiles were created to mimic the elegant stone adorning some of the most stunning architectural wonders of the world. The exquisite textures included in this series range from finely detailed limestone to deeply eroded travertine. Each profile flows well with both Classical and Modern design styles.

12" x 24" French Limestone - *Silver Ash*



8" Classic Jerusalem - Sabara Beige



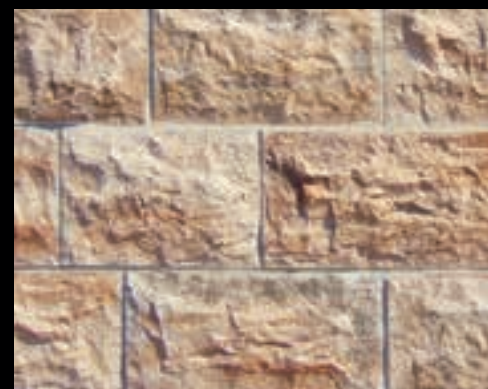
Smooth Limestone - Cream



8" Classic Jerusalem
Silver Ash



8" Classic Jerusalem
Sabara Beige



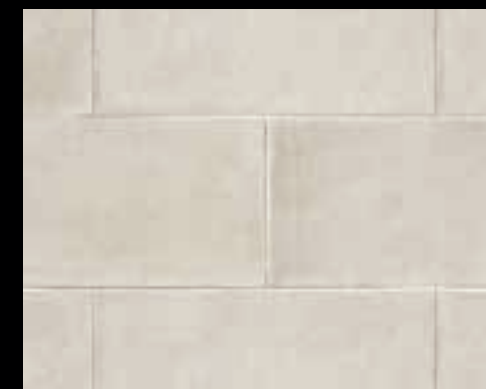
8" Classic Jerusalem
Cayenne



Smooth Limestone
Harvard Grey



Smooth Limestone
Cream

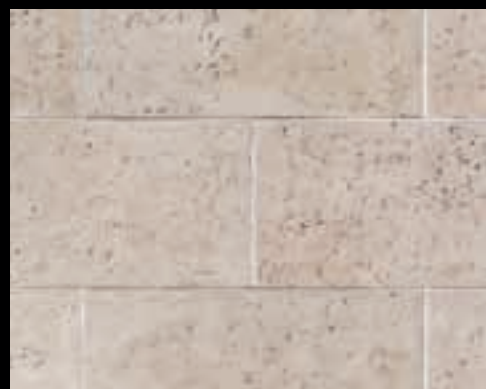


Smooth Limestone
White Sands

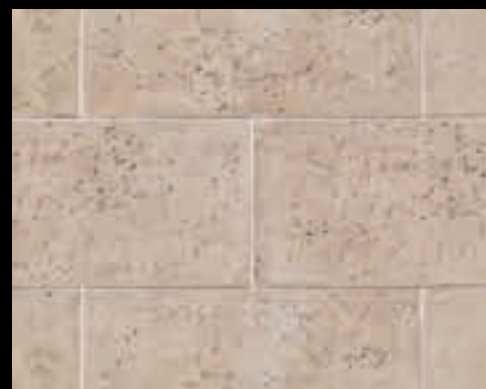


French Limestone - *Country Beige* (Featuring Custom French Limestone Radius Pieces - Available in Select Areas)

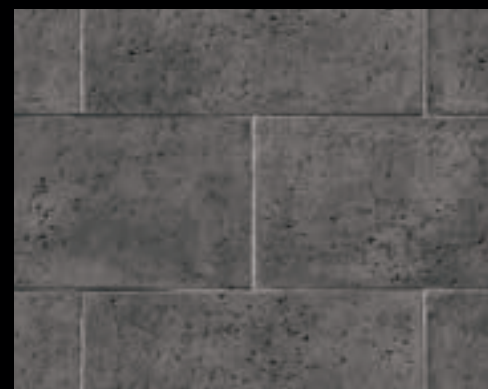
Chiseled Limestone - *Cream*



French Limestone
French White



French Limestone
Country Beige



French Limestone
Black Forest



Chiseled Limestone
Sunriver Blend



Chiseled Limestone
Silver Ash



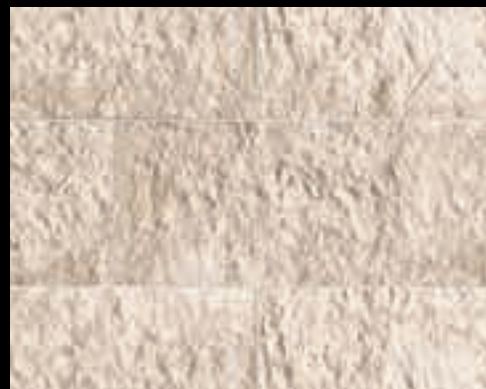
Chiseled Limestone
Cream



Hill Country Limestone - *Bandera*



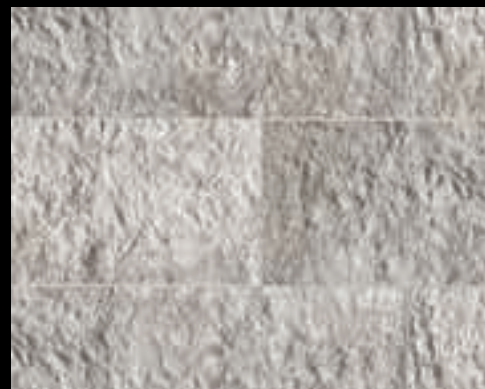
Colosseum Travertine - *Roman*



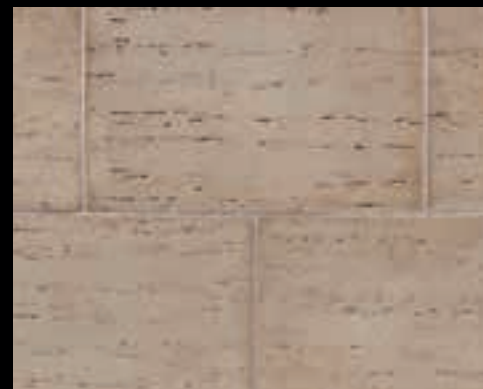
Hill Country Limestone
Cream



Hill Country Limestone
Bandera



Hill Country Limestone
Silver Ash



Colosseum Travertine
Roman



Colosseum Travertine
Timber Trail



Colosseum Travertine
Black Forest



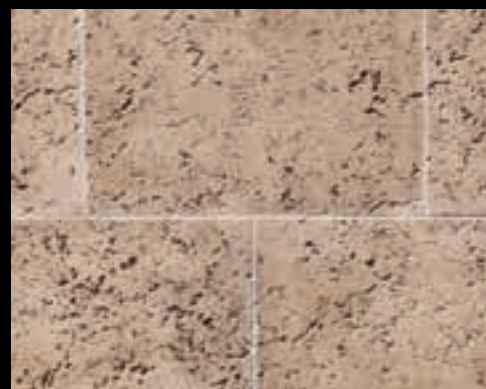
Caribbean Coral - Santorini Blend (Ashlar Pattern)



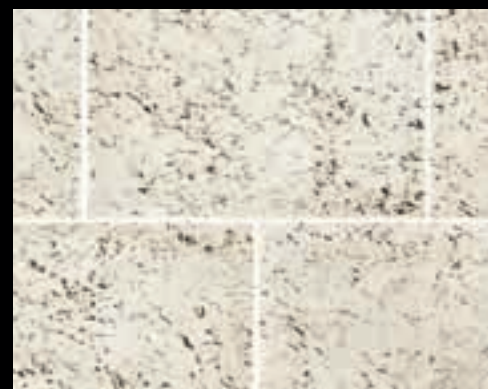
The Getty Stone - Embassy Blend



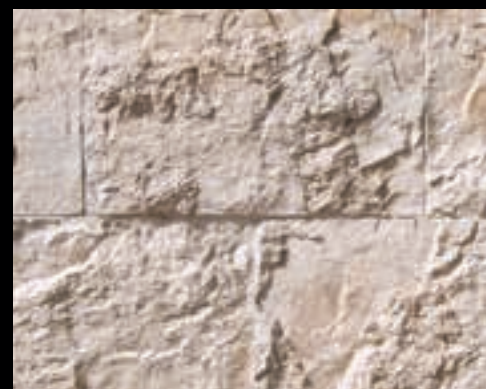
Caribbean Coral
Barbados (Ashlar Pattern)



Aegean Coral
Santorini Blend (Coursed Pattern)



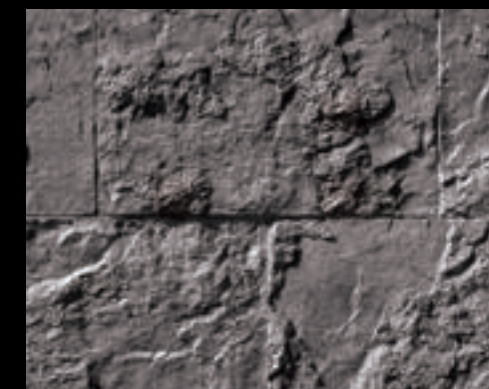
Aegean Coral
White Sands (Coursed Pattern)



The Getty Stone
Embassy Blend



The Getty Stone
Silver Ash



The Getty Stone
Black Forest



Sand Canyon Flagstone - *Amber Glow*



Chiseled Limestone - *Cream* with 4" Chiseled Limestone Band - *Silver Ash*



Chiseled Limestone - *Cream*
4" Chiseled Limestone - *Silver Ash*



The Getty Stone - *Embassy Blend*
5" Classic Jerusalem - *Silver Ash*



French Limestone - *Country Beige*
6" Chiseled Limestone - *Cream*



Sand Canyon Flagstone
Palomar Blend



Sand Canyon Flagstone
Desert Beige



Sand Canyon Honed
Desert Beige



Smooth Limestone - *Cream*
6" Split Limestone - *Cream*



Smooth Limestone - *Harvard Grey*
6" Colosseum Trav. - *Silver Ash*



French Limestone - *Cream*
6" Smooth Limestone - *Cream*



WOODSTONE SERIES

The WoodStone Series features three distinct textures that replicate the look and feel of natural wood. This durable thin concrete veneer is fire resistant and extremely cost effective when compared to its natural alternative.

Barn WoodStone - Rustic Farmhouse



Rough Cut WoodStone - Deadwood



Refined WoodStone - Red Oak



**Barn WoodStone
Rustic Farmhouse**



**Barn WoodStone
Spring Harvest**



**Barn WoodStone
Cannery Blend**



**Barn WoodStone
Old Frontier**



**Rough Cut WoodStone
Antique White**



**Rough Cut WoodStone
Cedar**



**Rough Cut WoodStone
Rustic Cedar**



**Rough Cut WoodStone
Carmel Mountain**



**Refined WoodStone
Antique White**



**Refined WoodStone
Red Oak**



**Refined WoodStone
Deadwood**



**Refined WoodStone
Blackened Oak**



THE DESIGNER SERIES

This unique series contains a variety of stylish modern profiles. These sleek, highly-textured veneers were created for the designer looking to add a touch of minimalistic style to their project. The continuous linear patterns compliment both modern and contemporary architectural designs.

Playa Vista Limestone - Cream



Playa Vista Limestone - *Black Forest (Ashlar Pattern)*



Amalfi Ledge - *Salerno*



Playa Vista Limestone
Walnut (Coursed Pattern)



Playa Vista Limestone
Alaskan Sunset (Coursed Pattern)



Playa Vista Limestone
Cream (Coursed Pattern)



Amalfi Ledge
Ravello



Amalfi Ledge
Pompeii



Amalfi Ledge
Marianna



3" Split Limestone - *Genoa Sands*



6" Split Limestone - *Genoa Sands*



3" Split Limestone
Grey



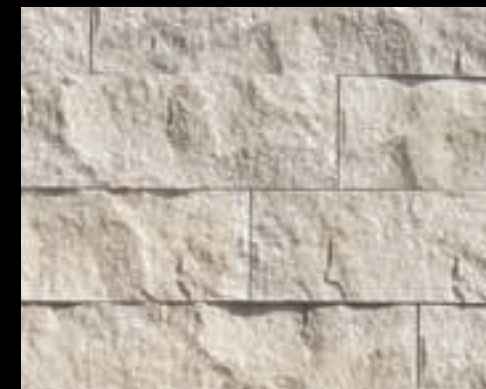
3" Split Limestone
Walnut



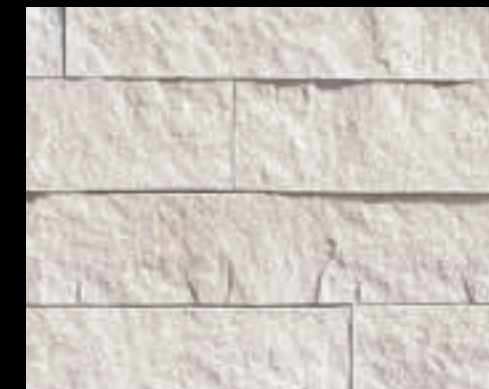
3" Split Limestone
Genoa Sands



6" Split Limestone
Summit Grey



6" Split Limestone
Cream



6" Split Limestone
White



Prairie Stone - Grey Granite



Industrial Ledge - Shale Grey



Prairie Stone
Latte



Prairie Stone
Mocha Granite



Prairie Stone
Smoke



Industrial Ledge
Blackend Oak



Industrial Ledge
Shale Grey



Industrial Ledge
Oakbrook



Lennox Stone - Painted White



The Wave - Painted White



Lennox Stone - Astoria White



CUT STONE SERIES

The Cut Series features a variety of profiles that replicate the look of natural thin-cut veneer selected from quarries across North America. The gorgeous natural textures and rich color hues highlight the inherent beauty that make these stone veneer styles so desirable within the design community.

Pavilion Stone - Pine Creek



Valley Cobble - Indian Springs



Osage - Fossil Bay



Canyon Cobble
Wind River



Canyon Cobble
Saratoga Springs



Valley Cobble
Desert Sunset



Osage
Dakota Brown



Osage
Cape Cod Grey



Osage
Ancient Reef



VILLA STONE SERIES

We searched up and down the Mediterranean coast to find the perfect blend of stone shapes and textures that embodied European old world architecture. Our Villa Stone profiles exemplify the unique characteristics of some of the most sought after types of stone adorning villas and chateaus across Europe.

Italian Villa® - Volterra



Venetian Villa® - Texas Cream (Dry Stacked)



Venetian Villa® - Madison County (Grouted)



Venetian Villa®
Versailles (Grouted)



Venetian Villa®
Sunset Blend (Grouted)



Venetian Villa®
Dakota Brown (Grouted)



Venetian Villa®
Madison County (Grouted)



Venetian Villa®
Palazzo (Dry Stacked)



Venetian Villa®
Grey (Grouted)



Italian Villa® - *Chablis with Mortar Wash*



Italian Villa® - *Volterra*



Italian Villa®
Provo Canyon Grey



Italian Villa®
Verona



Italian Villa®
Aspen



Italian Villa®
Dakota Brown



Italian Villa®
Volterra



Italian Villa®
Portabella



Tuscan Villa® - *Florentine*



Tuscan Villa® - *Prairie Moss*



Tuscan Villa®
Monarch



Tuscan Villa®
Seville



Tuscan Villa®
Florentine



Tuscan Villa®
Dakota Brown



Tuscan Villa®
Prairie Moss



Tuscan Villa®
Romano



French Country Villa® - Volterra



French Country Villa® - Versailles



French Country Villa®
Bordeaux



French Country Villa®
Champagne



French Country Villa®
Verona



French Country Villa®
Carmel Mountain



French Country Villa®
Chablis



French Country Villa®
Grey Quartzite



LEDGESTONE SERIES

We feature a vast selection of ledgerstone profiles which replicate some of the most beautiful quarried ledgerstones from around the country. Choose from a wide array of shapes, sizes and colors to compliment any architectural project, ranging from rustic to contemporary in style.

Idaho Drystack - Smokey Grey



Old World Ledge - *Sunset Blend (Grouted)*



Old World Ledge - *Charleston (Dry Stacked)*



Old World Ledge
Antique Cream (Dry Stacked)



Old World Ledge
Burnt Oak (Dry Stacked)



Old World Ledge
Brookside (Grouted)



Old World Ledge
Etowah (Dry Stacked)



Old World Ledge
Chablis (Dry Stacked)



Old World Ledge
Monarch (Dry Stacked)



Old World Ledge
Cape Cod Grey (Dry Stacked)



Old World Ledge
Huron (Dry Stacked)



Old World Ledge
Grey Quartzite (Grouted)



Old Country Ledge - Huron (Dry Stacked)



Old Country Ledge - Carmel Mountain (Dry Stacked)



Old Country Ledge
Madison County (Grouted)



Old Country Ledge
Chablis (Dry Stacked)



Old Country Ledge
Aspen (Grouted)



Old Country Ledge
Shasta (Dry Stacked)



Old Country Ledge
Grey Quartzite (Grouted)



Old Country Ledge
Banff (Dry Stacked)



Old Country Ledge
Dakota Brown (Dry Stacked)



Old Country Ledge
Coastal Brown (Grouted)



Old Country Ledge
Carmel Mountain (Grouted)



Pro-Ledge® - Black Forest



Pro-Ledge® - Brookside



Pro-Ledge®
White



Pro-Ledge®
Alaskan Sunset



Pro-Ledge®
Brookside



Pro-Ledge® - Oakbrook



Pro-Ledge®
Black Forest



Pro-Ledge®
Grey Quartzite



Pro-Ledge®
Chablis



Coronado Honey Ledge - *Golden Harvest*



Coronado Honey Ledge - *Shasta*



Coronado Honey Ledge
Shasta



Coronado Honey Ledge
Grey Quartzite



Coronado Honey Ledge
Huron



Coronado Honey Ledge
Golden Harvest



Coronado Honey Ledge
Chablis



Coronado Honey Ledge
Sioux Falls



Coronado Honey Ledge
Four Rivers



Coronado Honey Ledge
Carmel Mountain



Coronado Honey Ledge
Rocky Mountain Rundle



Quick Stack® - *Antique Cream*



Quick Stack® - *Carmel Mountain*



2" Quick Stack® Piece

4" Quick Stack® Piece

4" Quick Stack® Panel



Quick Stack®
Cape Cod Grey



Quick Stack® - *English Grey*



Quick Stack®
Carmel Mountain



Quick Stack®
Cathedral Grey



Quick Stack®
Coastal Brown



Quick Stack®
Aspen



Virginia Ledge
Golden Sand



Virginia Ledge
Storm Brown



Virginia Ledge
Aspen



Virginia Ledge
Coastal Brown



Virginia Ledge - *Cape Cod Grey*



Sierra Ledge - *Bourbon Creek*



Sierra Ledge
Brookside



Sierra Ledge
Falmouth



Sierra Ledge
Cathedral Grey



Eastern Mountain Ledge® - *Dakota Brown*



Eastern Mountain Ledge® - *Carmel Mountain*



Eastern Mountain Ledge®
Brookside



Eastern Mountain Ledge®
Wheat



Eastern Mountain Ledge®
Grey Quartzite



Eastern Mountain Ledge®
English Grey



Eastern Mountain Ledge®
Provo Canyon Grey



Eastern Mountain Ledge®
Carmel Mountain



Eastern Mountain Ledge®
Chablis



Eastern Mountain Ledge®
Madison County



Eastern Mountain Ledge®
Dakota Brown



Eastern Mountain Ledge®
Coastal Brown



Eastern Mountain Ledge®
Aspen



Eastern Mountain Ledge®
Huron



Rocky Mountain Ledge
Copper Canyon (Dry Stacked)



Rocky Mountain Ledge
Meadow Springs (Dry Stacked)



Rocky Mountain Ledge
Sandy Peaks (Dry Stacked)



Rocky Mountain Ledge - Copper Canyon (Dry Stacked)



Canyon Ledge - Dakota Brown



Rocky Mountain Ledge
Bitterroot (Grouted)



Rocky Mountain Ledge
Greycliffe (Dry Stacked)



Rocky Mountain Ledge
Black Rundle (Dry Stacked)



Canyon Ledge
Cape Cod Grey



Canyon Ledge
Sunset Blend



Canyon Ledge
Brookside



Mountain Strip Stone - Renaissance Blend



Coronado Strip Stone - Fawn



Mountain Strip Stone Brookside



Mountain Strip Stone Chablis



Mountain Strip Stone Cape Cod Grey



Coronado Strip Stone Black Forest



Coronado Strip Stone Dakota Brown



Coronado Strip Stone Fawn



Idaho Drystack - *Antique Buff*



Idaho Drystack - *Carmel Mountain*



Idaho Drystack
Antique Buff



Idaho Drystack
Grey Quartzite



Idaho Drystack
Cape Cod Grey



Idaho Drystack
Aspen



Idaho Drystack
Chablis



Idaho Drystack
Carmel Mountain

Square foot coverage is based on installation with tightly-fitted joints.
Other colors are available for this profile.



Weathered Edge - *Coal Canyon*



Weathered Edge - *Sunhill Blend*



Weathered Edge
Foxhill Blend



Weathered Edge
Sunhill Blend



Weathered Edge
Wisconsin Blend



Desert Ridge - *Chablis*



Weathered Edge
Coal Canyon



Weathered Edge
Aspen



Weathered Edge
Chablis



ASHLAR & RUBBLE SERIES

The skillfully handcrafted stones from this series can be traced back to times when artisan masons meticulously chiseled blocks of limestone to construct majestic structures. These magnificent stone profiles possess wonderfully sculpted textures and can be installed in an ashlar or coursed pattern.

Country Rubble - Lompoc



Country Rubble - Grey Quartzite (Dry Stacked)



Country Rubble - Aspen (Grouted)



Country Rubble
Antique Cream (Dry Stacked)



Country Rubble
Texas Cream (Grouted)



Country Rubble
Sunset Blend (Dry Stacked)



Country Rubble
Coastal Brown (Dry Stacked)



Country Rubble
Golden Brown (Dry Stacked)



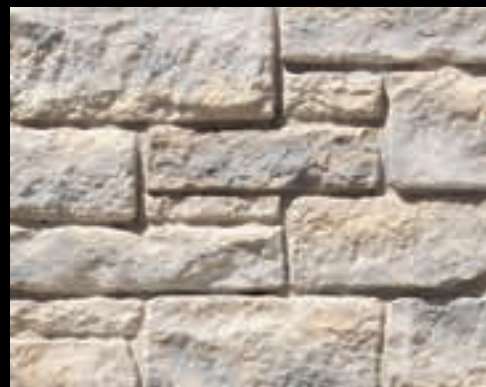
Country Rubble
Grey Quartzite (Grouted)



Texas Rubble - *Texas Cream*



Carolina Rubble - *Sandstone*



Texas Rubble
Antique Cream



Texas Rubble
Texas Cream



Texas Rubble
Carmel Mountain



Carolina Rubble
Dakota Brown



Carolina Rubble
Grey Quartzite

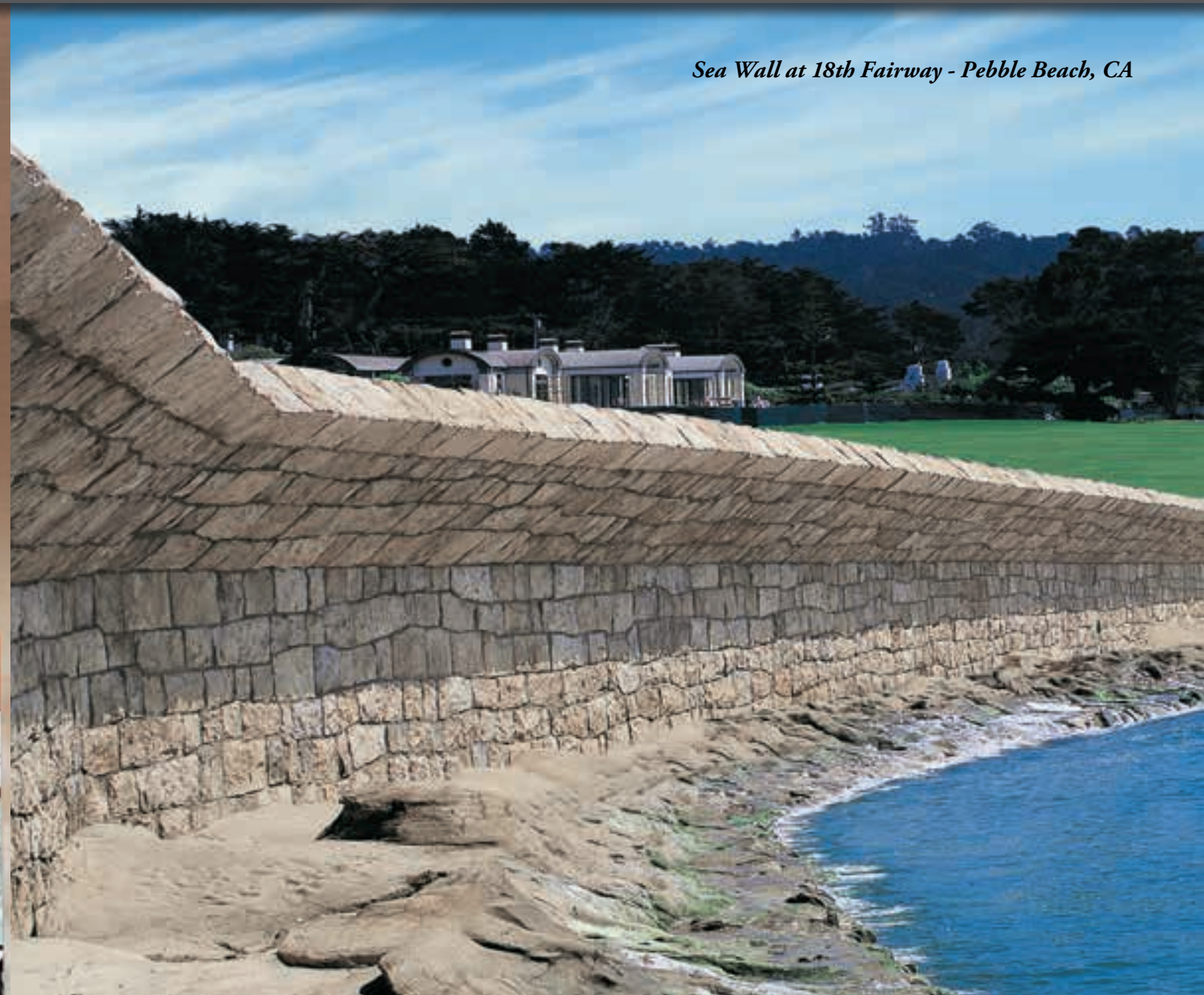


Carolina Rubble
Aspen

Square foot coverage is based on installation with a 1/2" mortar joint.
Other colors are available for this profile.



English Rubble - *Dakota Brown*



Sea Wall at 18th Fairway - Pebble Beach, CA

English Rubble - *Pebble Beach Blend*



English Rubble
Black Hills



English Rubble
Dakota Brown



English Rubble
Newport Sandstone



Santa Barbara - Sand Dune (Coursed Pattern)



Santa Barbara - Brookshire (Ashlar Pattern)



Santa Barbara
English Grey (Ashlar Pattern)



Santa Barbara
Sand Dune (Ashlar Pattern)



Santa Barbara
Brookshire (Ashlar Pattern)



Country Castle - *Lompoc (Grouted)*



Belgian Castle - *Dakota Brown (Grouted)*



Country Castle
Dakota Brown (Grouted)



Country Castle
Chablis (Grouted)



Country Castle
Madison County (Grouted)



Belgian Castle
Black Forest (Dry Stacked)



Belgian Castle
Chablis (Grouted)



Belgian Castle
Brookside (Dry Stacked)



IRREGULAR SHAPED STONE SERIES

The irregular shaped stones shown in this series replicate a diverse group of fieldstones and river rocks that are native to the Eastern United States. These stones feature textures forged by millions of years of erosion, and a color palette of rich earthy hues that blend seamlessly with outdoor environments.

Appalachian Fieldstone - Bourbon



Minnesota Fieldstone - *Dakota Brown*



Minnesota Fieldstone - *Coastal Brown*



Minnesota Fieldstone
Grey Quartzite



Minnesota Fieldstone
Carmel Mountain



Minnesota Fieldstone
Dakota Brown



Minnesota Fieldstone
Chablis



Minnesota Fieldstone
Aspen



Minnesota Fieldstone
Huron

Square foot coverage is based on installation with a 1/2" mortar joint.
Other colors are available for this profile.



Appalachian Fieldstone - *Mountain Sunset*



Appalachian Fieldstone - *Grey Quartzite*



Appalachian Fieldstone
Naples



Appalachian Fieldstone
Mountain Sunset



Appalachian Fieldstone
Madison County



Appalachian Fieldstone
Dakota Brown



Split Fieldstone - *Carmel Mountain*



Viejo Ranch - *Viejo Blend*



Split Fieldstone
Lompoc



Split Fieldstone
Silver Grey



Split Fieldstone
Dakota Brown



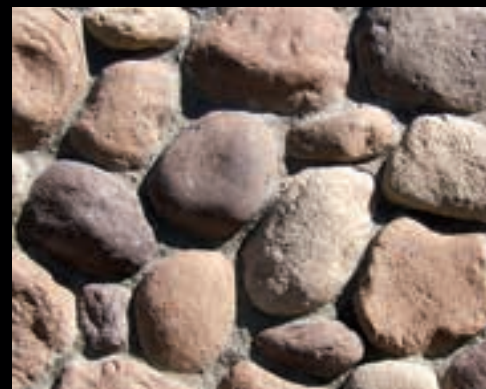
River Rock - Seaside



Creek Rock - Southwest Blend



River Rock
Reno Blend



River Rock
Sienna Brown



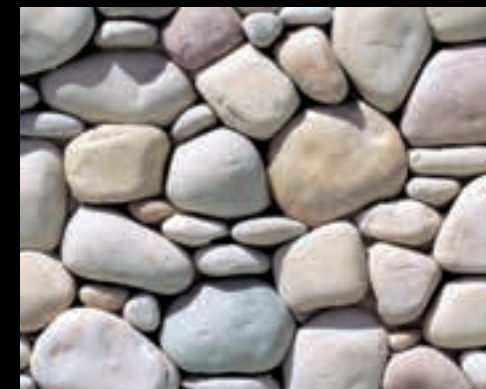
River Rock
Desert Rust



Creek Rock
Apache Brown



Creek Rock
Calico Sand



Creek Rock
Palm Springs Blend



STONE COMBINATIONS

Multiple stone veneer styles and colors can be combined to create a custom appearance. Varying the percentage of each profile allows designers to create drastically different looks, which enables further refinement of the style they're trying to achieve.

70% Eastern Mountain Ledge® - *Coastal Brown*
30% Minnesota Fieldstone - *Coastal Brown*



(Left Wall) French Limestone with 6" Chiseled Limestone Band - *Country Beige*
(Center Column) Mountain Strip Stone - *Chablis*



40% Italian Villa® - *Volterra* | 40% French Country Villa® - *Volterra*
20% Viejo Ranch - *Viejo Blend*



50% Minnesota Field. - *Grey Quartzite*
50% Tumbled Ledge - *Grey Quartzite*



80% Minnesota Field. - *Wheat & Chestnut*
20% Eastern Mtn. Ledge - *Wheat & Chestnut*



80% Eastern Mtn. Ledge - *Dakota Brown*
20% Appalachian Field. - *Dakota Brown*



50% Eastern Mtn. Ledge - *Madison County*
50% Appalachian Field. - *Madison County*



70% Eastern Mtn. Ledge - *Carmel Mtn.*
30% Minnesota Field. - *Wisconsin Blend*



70% Split Fieldstone - *Lompoc*
30% Eastern Mtn. Ledge - *Lompoc*

Square foot coverage varies depending on selected profile.
Other colors are available for each of these profiles.



THIN BRICK SERIES

We offer a range of thin brick products that come in a wide variety of sizes, textures and colors. Projects can be enhanced with the alluring look and feel of full bed-depth brick without the need for additional wall tie support that standard brick installations require.

Adobe Brick - Sienna with Mortar Wash



2 1/2" x 8" Special Used Brick - *Eagle Buff*



2 1/2" x 8" Special Used Brick - *Rustic Blend*



2 1/2" x 8" Special Used Brick
Bear Creek



2 1/2" x 8" Special Used Brick
Wolf Grey



2 1/2" x 8" Special Used Brick
Eagle Buff



2 1/2" x 8" Special Used Brick
Country



2 1/2" x 8" Special Used Brick
Rustic Blend



2 1/2" x 8" Special Used Brick
Glacier

Square foot coverage is based on installation with a 1/2" mortar joint.
Other colors are available for this profile.



2½" x 8" Sculptured Brick - *Eagle Buff*



2½" x 8" Clinker Brick - *Brown Blend*



2½" x 8" Sculptured Brick
Rustic Blend



2½" x 8" Sculptured Brick
Aspen



2½" x 8" Sculptured Brick
Wheat



2½" x 8" Clinker Brick
Eagle Buff



2½" x 8" Clinker Brick
Brown Blend



2½" x 8" Clinker Brick
Antique Red



2 1/2" x 8" Belgian Brick - *Bear Creek*



4" x 12" Oversized Wirecut Brick - *Old Chicago*



2 1/2" x 8" Belgian Brick
Brookside



2 1/2" x 8" Belgian Brick
Light Grey



2 1/2" x 8" Belgian Brick
Bear Creek



2 1/2" x 8" Wirecut Brick
La Jolla Blend



2 1/2" x 8" Wirecut Brick
Spectrum



2 1/2" x 8" Wirecut Brick
Wolf Grey



2 1/2" x 8" Sicilian Brick - Ferrara Blend



2 1/4" x 10" Roman Brick - Mezzano



2 1/2" x 8" Sicilian Brick
Ferrara Blend



2 1/2" x 8" Sicilian Brick
Marsala Blend



2 1/2" x 8" Sicilian Brick
Monreale



2 1/4" x 10" Roman Brick
Mezzano



2 1/4" x 10" Roman Brick
Sorano



2 1/4" x 10" Roman Brick
Ambrosia



3" x 10" Weathered Brick - *Carmel Mountain*



3" x 10" New England Brick - *Dakota Brown*



3" x 10" Weathered Brick
Carmel Mountain



3" x 10" Weathered Brick
Antique Red



3" x 10" Weathered Brick
Savannah



3" x 10" New England Brick
Charleston



3" x 10" New England Brick
Dakota Brown



3" x 10" New England Brick
Bear Creek



4" x 16" Adobe Brick - *Sienna with Mortar Wash*



4" x 16" Adobe Brick - *Sienna with Mortar Wash*



4" x 16" Adobe Brick
Haystack



4" x 16" Adobe Brick
Saltillo



4" x 16" Adobe Brick
Sienna



FLOOR TILE SERIES

We have gathered some of the most unique flooring textures from around the world to create a beautiful collection of cement-set concrete tiles. Using a specialized method for color blending, the finished product is virtually indistinguishable from natural stone tile.

Jerusalem Cobble - Antique Sands
Wall Stone: Mountain Strip Stone - Fawn

VERSAILLES TRAVERTINE

Versailles Travertine adds a beauty to your home that inspires absolute refinement. From its soft hues to its distinct tumbled textures, Versailles Travertine defines elegance.



Versailles Travertine
Cayenne



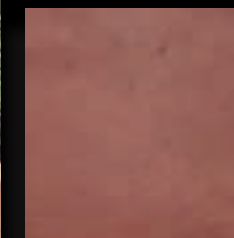
Versailles Travertine - *Wheatfield*



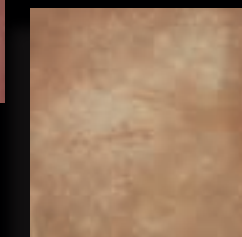
Italian Tile - *Saltillo*

ITALIAN TILE

Italian Tile adds a sense of tradition, warmth and old world charm that other tiles don't possess. This faintly textured tile, coupled with its hard-lined edge, creates a feel of natural symmetry.



Italian Tile
Mission Red



Italian Tile
Buckskin

JERUSALEM COBBLE

Jerusalem Cobble brings the ancient world to your footsteps. Replicating the old cobble roads of Jerusalem with highly detailed textures and rustic earth tone colors, Jerusalem Cobble adds an old world feel to any setting.



Jerusalem Cobble
Heritage Blend



Jerusalem Cobble - *Antique Sands*
Wall Stone: Italian Villa® - *Dakota Brown*



Mexican Tile - *Milano*
Wall Stone: Quick Stack® - *Cape Cod Grey*

MEXICAN TILE

Our Mexican Tile is popular throughout the Southwest due to its genuine look and feel. This tile is for those seeking the authentic beauty and style of a Spanish Hacienda.



Mexican Tile
Saltillo



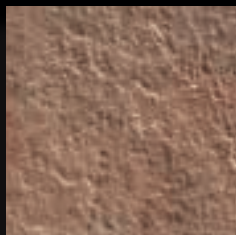
Mexican Tile
Burnt Orange

BELGIAN TILE

It is the beauty of Belgian Tile that gives this tile much charm. This attractive tile can be used in several different indoor and outdoor settings.



Belgian Tile
Antique Buff



Belgian Tile
Rustic Brown



Belgian Tile - *Autumn Leaves*
Wall Stone: Country Castle - *Lompoc*



River Washed Tile - *Desert Rust*
Wall Stone: Ocala - *Antique Sands*

RIVER WASHED TILE

River Washed Tile exudes a sense of tranquility. This lightly textured stone mimics natural color blends and works perfectly with indoor and outdoor mosaics.



River Washed Tile
Desert Rust

River Washed Tile
Grey Granite

RANDOM FLAGSTONE TILE

Random Flagstone has a timeless beauty. This uniquely shaped tile will match almost any architecture and stone veneer. In addition, the shape makes it extremely easy to install.



Random Flagstone Tile
Grey



Random Flagstone Tile
Brookside



Random Flagstone Tile - *Riviera Blend*
Wall Stone: Country Castle - *Lompoc*



European Cobble - *Alpine Blend*

EUROPEAN COBBLE

European Cobble radiates the charm and ambience of Europe with an array of old world colors. This profile adds the authentic touch and feel of an ancient cobblestone street.



European Cobble
Alpine Blend



European Cobble
Monaco Blend

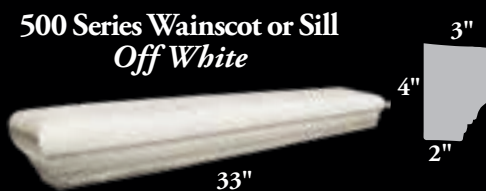


TRIM & ACCESSORIES

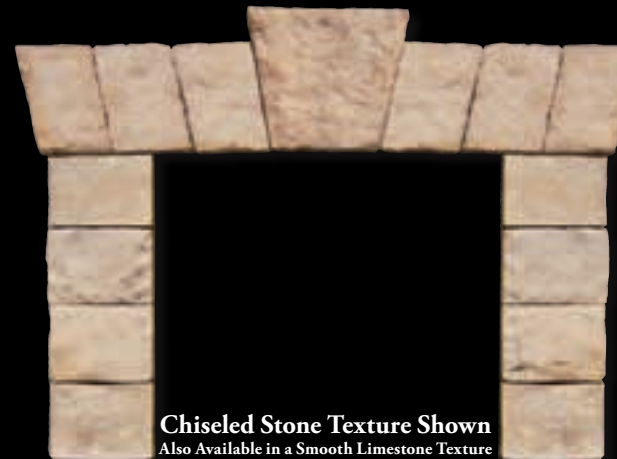
Coronado Stone offers one of the largest architectural stone accessory product lines in the industry. These meticulously handcrafted accents will add the extra finishing touches to your amazing project.

*Flagstone Wall Cap - Lompoc
Italian Villa® - Dakota Brown*

MOLDINGS & SILLS



WINDOW STONES AND KEYSTONE



ARCHITECTURAL TRIM STONE



Architectural Trim Stone - *Brownstone*
Thickness: 1 1/2" *Outside measurements shown.



Chiseled Stone Lintel - *Volterra* (Above Window)



Split Stone Sill - *Volterra* (Below Window)

*Can be cut into an L-shape for recessed windows.

MANTELS



Chiseled Stone Mantel - *Carmel Mtn.*



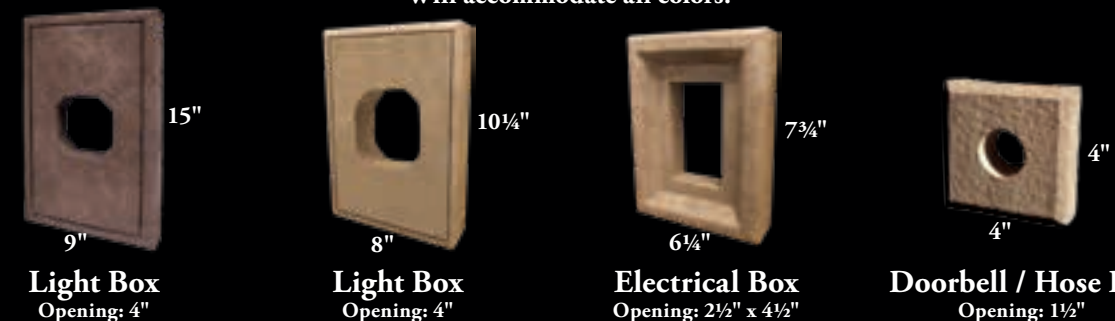
HEARTHSTONES

18" x 20" x 2" Will accommodate all colors.



BOXES

Will accommodate all colors.



QUOINS

Thickness: 2"



Chiseled Quoin - Desert Sand
Model #502
Will accommodate all colors.



Belgian Castle Quoin - Light Grey
Model #102
Will accommodate all colors.



Vanderbilt Quoin - #2 Grey
Model #402
Colors: #2 Grey, Off White
Texture: Drypack

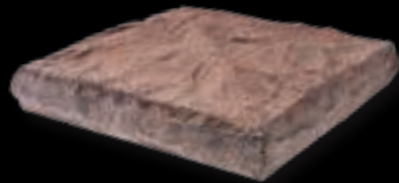
WALL & POST CAPS



Flagstone Post Cap - Lompoc
20" x 20", 28" x 28", 30" x 30"
Edge Thickness: 3 1/2"



Flagstone Wall Cap - Light Grey
9" x 18", 12" x 24", 14" x 24", 18" x 24"
Edge Thickness: 2 1/2"



Chiseled Stone Post Cap - Brownstone
16" x 16", 18" x 18", 20" x 26", 21" x 21"
24" x 24", 28" x 28", 30" x 30", 32" x 32"
36" x 36", 38" x 38", 42" x 42"
Edge Thickness: 3 1/2" Peak Height: Varies Depending on Size



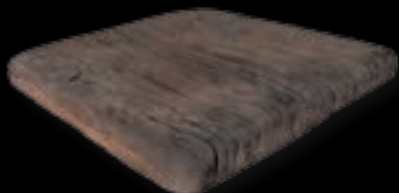
Chiseled Stone Wall Cap - Aspen
8" x 24", 10" x 18", 12" x 18"
14" x 18", 16" x 24", 18" x 24"
Edge Thickness: 2" Peak Height: 3 1/2"



Snapped Edge Post Cap - Carmel Mtn.
24" x 24"
Edge Thickness: 1 3/4"



Snapped Edge Wall Cap - Dakota Brown
12" x 24", 14" x 24"
Edge Thickness: 1 3/4"



Barn WoodStone Post Cap - Cannery Blend
21" x 21"
Edge Thickness: 2 1/2"



Barn Woodstone Wall Cap - Old Frontier
10" x 36", 12" x 36"
Edge Thickness: 2 1/2"



BRICK ACCESSORIES

(All inside measurements are nominal. Items do not come grouted.)



2 1/2" x 8" Corner Rustic Blend



4" x 8" Corner Rustic Blend



3-Sided Corner Rustic Blend
Left and Right Corners Available



Long Return Corner Rustic Blend



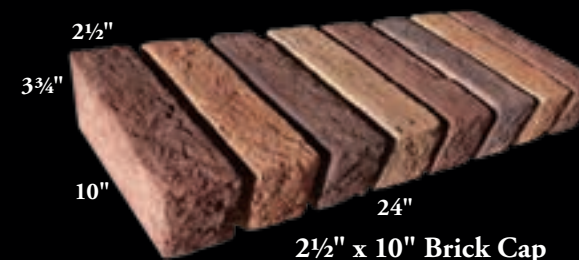
Brick Sill Rustic Blend



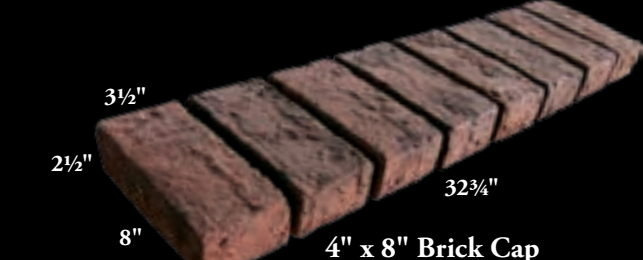
2 1/2" Brick Molding Rustic Blend



4" Brick Molding Antique Red



2 1/2" x 10" Brick Cap Tribeca



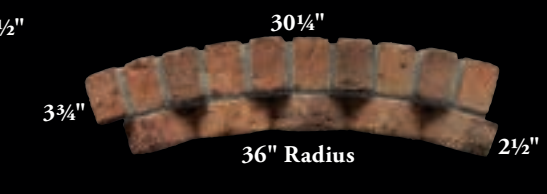
4" x 8" Brick Cap Antique Red



Panelized Brick Post Cap Rustic Blend



Sawtooth Brick Trim Rustic Blend



Panelized Curved Sawtooth Tribeca



Panelized Curved Sawtooth Arch - Tribeca
Custom Sizes Available in Select Areas For All Brick Accessories



Panelized Curved Sawtooth Arch - Tribeca



3/4" Full Brushed (White Grout)
French Country Villa® - Bordeaux



3/4" Full Brushed (Matching Grout)
French Country Villa® - Bordeaux



1/2" - 3/4" Deep Raked
Mountain Villa® - Rustic Valley



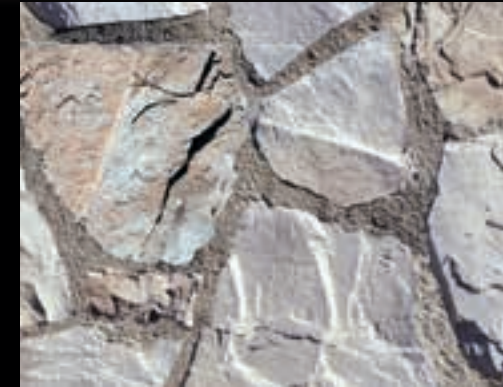
1" - 1 1/2" Full Smooth Tooled
Mountain Villa® - Rustic Valley



Full Brushed - White Grout



Shallow Brushed - Grey Grout



3/4" Full Clean Smooth Brushed
Euro Villa® - Timberlake



1" Full Rough Brushed
Euro Villa® - Timberlake



3/4" Full Brushed
Tuscan Villa® - Prairie Moss



3/4" Shallowed Brushed
Mountain Villa® - Grey Quartzite



1" - 1 1/2" Full Brushed
Mountain Villa® - Grey Quartzite



3/4" Deep Raked (Matching Grout)
Italian Villa® - Portabella



1" Full Brushed (White Grout)
Italian Villa® - Portabella



3/4" Weeping
Tuscan Villa® - Prairie Moss



TECHNICAL DATA

Coronado Stone supports the specification and design process with architectural binders, hatch patterns, tileable textures and a variety of other helpful specification tools, all of which are available in hardcopy or can be downloaded from our website.

12" x 24" Chiseled Limestone - *Silver Ash*
16" x 24" Colosseum Travertine - *Black Forest*
16" x 24" The Getty Stone - *Embassy Blend*
16" x 30" Sand Canyon Flagstone - *Palomar*

CORONADO STONE SIZES

| Profile | Height | Length | Thickness | Weight |
|-------------------------|-----------------|-----------------|-----------------|-------------|
| 3" Split Limestone | 3" | up to 18" | 1" - 1 3/4" | 7 - 10 lbs. |
| 6" Split Limestone | 6" | up to 30" | 1 1/4" | 7 - 10 lbs. |
| 8" Classic Jerusalem | 8" | 8" - 24" | 1" | 7 - 10 lbs. |
| Adobe Brick | 3 1/2" (±1/8") | 15 1/4" (±1/4") | 1" | 4 - 6 lbs. |
| Aegean Coral | 16" | 24" | 1" | 7 - 10 lbs. |
| Amalfi Ledge | 6"* | 24" | 1/2" - 1 1/4" | 7 - 10 lbs. |
| Appalachian Fieldstone | 7" - 9" | 7" - 9" | 1 1/2" - 2 1/2" | 7 - 10 lbs. |
| Artisan Ledge | 4"* | up to 20" | 1" - 2" | 7 - 10 lbs. |
| Barn WoodStone | 6" and 8" | 36" | 1" | 7 - 10 lbs. |
| Belgian Brick | 2 1/2" (±1/16") | 7 3/4" (±1/8") | 3/4" | 4 - 6 lbs. |
| Belgian Castle | 2" - 12" | up to 16" | 1" | 7 - 10 lbs. |
| Canyon Cobble | 2" - 10" | 4" - 24" | 1" - 1 3/4" | 7 - 10 lbs. |
| Canyon Ledge | 1" - 7" | up to 20" | 1 1/2" - 3" | 7 - 10 lbs. |
| Caribbean Coral | 4" - 12" | 4" - 16" | 1" | 7 - 10 lbs. |
| Carolina Rubble | 2" - 10" | 4" - 16" | 1 1/4" - 2 1/4" | 7 - 10 lbs. |
| Chiseled Limestone | 12" | 24" | 1" | 7 - 10 lbs. |
| Clinker Brick | 2 1/2" | 4" and 8" | 3/4" - 2" | 4 - 6 lbs. |
| Colosseum Travertine | 16" | 24" | 1" | 7 - 10 lbs. |
| Coronado Honey Ledge | 2" - 6"* | up to 20" | 1" - 2" | 7 - 10 lbs. |
| Coronado Strip Stone | 1 1/2" - 2" | up to 23" | 1 1/4" to 2" | 7 - 10 lbs. |
| Country Castle | 1 1/2" - 7 1/2" | 4" - 20" | 1 1/2" | 7 - 10 lbs. |
| Country Rubble | 2" - 8" | up to 23" | 1" - 2 1/2" | 7 - 10 lbs. |
| Creek Rock | 3" - 10" | 3" - 10" | 3/4" - 2 1/2" | 7 - 10 lbs. |
| Desert Ridge | 1" - 12" | up to 32" | 1" - 2 1/2" | 7 - 10 lbs. |
| Eastern Mountain Ledge® | 1" - 5"* | up to 22" | 1" - 3" | 7 - 10 lbs. |
| English Rubble | 6" - 14" | 8" - 32" | 1 1/4" - 2" | 7 - 10 lbs. |
| Euro Villa® | 4" - 12" | Averaging 8" | 1" - 1 1/2" | 7 - 10 lbs. |
| Feathered Stone | 2" - 7" | 5" - 16" | 3/4" - 1" | 7 - 10 lbs. |
| French Country Villa® | 2" - 7" | up to 18" | 1 1/2" - 2" | 7 - 10 lbs. |
| French Limestone | 12" | 24" | 1" | 7 - 10 lbs. |
| The Getty Stone | 16" | 24" | 1" - 1 3/4" | 9 - 12 lbs. |
| Hill Country Limestone | 12" | 24" | 1" | 7 - 10 lbs. |
| Idaho Drystack | 1" - 4" | 4" - 16" | 1 1/4" - 2" | 7 - 10 lbs. |
| Industrial Ledge | 2", 3", 4" & 5" | 4" - 30" | 3/4" - 2" | 7 - 10 lbs. |
| Italian Villa® | 2" - 8" | up to 16" | 1 1/2" - 3 1/4" | 7 - 10 lbs. |
| Lennox Stone | 4" - 16" | 4" - 24" | 3/8" - 2" | 12 lbs. |
| Minnesota Fieldstone | 6" - 12" | 6" - 12" | 1 1/2" - 2 1/2" | 7 - 10 lbs. |
| Montana Ledge | 1" - 4"* | up to 20" | 1" - 2 1/2" | 7 - 10 lbs. |
| Mountain Strip Stone | 1 1/2" and 3" | up to 23" | 1 1/4" to 2" | 7 - 10 lbs. |

| Profile | Height | Length | Thickness | Weight |
|---------------------------|-----------------------|-----------------|---------------|-------------|
| New England Brick | 2 5/8" (±1/16") | 9 1/2" (±1/8") | 1/2" (±1/16") | 4 - 6 lbs. |
| Old Country Ledge | 2" - 7" | 4" - 20" | 1" - 1 3/4" | 7 - 10 lbs. |
| Old World Ledge | 1" - 5" | 4" - 16" | 1" - 1 1/2" | 7 - 10 lbs. |
| Osage | 3" - 12" | 4" - 28" | 1" - 1 1/2" | 7 - 10 lbs. |
| Pavilion Stone | 4" - 12" | 4" - 20" | 1/2" - 1" | 7 - 10 lbs. |
| Playa Vista Limestone | 2 1/2", 5" and 7 3/4" | up to 24" | 1" - 1 1/2" | 7 - 10 lbs. |
| Prairie Stone | 2" to 5" | 4" - 30" | 1 1/4" | 7 - 10 lbs. |
| Pro-Ledge® | 4"* | up to 20" | 1" - 1 1/2" | 7 - 10 lbs. |
| Quick Stack® | 2" or 4"* | up to 20" | 1" - 2" | 7 - 10 lbs. |
| Refined WoodStone | 6" | 36" | 1" | 7 - 10 lbs. |
| River Rock | 2" - 10" | 4" - 10" | 3/4" - 2 1/2" | 7 - 10 lbs. |
| Rocky Mountain Ledge | 1" - 7" | up to 24" | 1" - 2 1/2" | 7 - 10 lbs. |
| Roman Brick | 2 1/4" (±1/8") | 10" (±1/8") | 5/8" (±1/16") | 4 - 6 lbs. |
| Rough Cut WoodStone | 6" | 36" | 1" | 7 - 10 lbs. |
| Sawtooth Ledge | 3" and 6" | up to 20" | 1" | 7 - 10 lbs. |
| Santa Barbara | 4" - 14" | 8" - 32" | 1 1/4" - 2" | 9 - 12 lbs. |
| Sand Canyon Flagstone | 16" | 30" | 1" | 9 - 12 lbs. |
| Sand Canyon Honed | 16" | 30" | 1" | 9 - 12 lbs. |
| Sculptured Brick | 2 1/2" (±1/8") | 7 3/8" (±1/4") | 3/4" - 1" | 4 - 6 lbs. |
| Sicilian Brick | 2 1/2" (±1/8") | 7 3/4" (±1/8") | 1/2" | 4 - 6 lbs. |
| Sierra Ledge | 4"* | up to 20" | 1 1/2" - 2" | 7 - 10 lbs. |
| Smooth Limestone | 12" | 24" | 1" | 7 - 10 lbs. |
| Special Used Brick | 2 1/2" (±1/8") | 7 3/4" (±1/4") | 1/2" (±1/16") | 4 - 6 lbs. |
| Split Fieldstone | 6" - 20" | 6" - 20" | 1" - 2" | 7 - 10 lbs. |
| Texas Rubble | 2" - 8" | up to 23" | 1" - 2 1/2" | 7 - 10 lbs. |
| Tuscan Villa® | 2" - 12" | 4" - 16" | 1" - 1 3/4" | 7 - 10 lbs. |
| Valley Cobble | 2" - 12" | 4" - 24" | 1" - 1 3/4" | 7 - 10 lbs. |
| Venetian Villa® | 2" - 14" | 4" - 32" | 1" - 2 1/2" | 7 - 10 lbs. |
| Viejo Ranch | 2" - 18" | up to 30" | 2" - 3" | 9 - 12 lbs. |
| Virginia Ledge | 2" or 4"* | up to 20" | 1" - 3" | 7 - 10 lbs. |
| The Wave | 32" | 32" | 1/2" - 1 1/2" | 5 lbs. |
| Weathered Brick | 2 5/8" (±1/8") | 9 7/8" (±1/8") | 1/2" (±1/16") | 4 - 6 lbs. |
| Weathered Edge | 1" - 7" | up to 32" | 1" - 2 1/2" | 7 - 10 lbs. |
| Wirecut Brick (Oversized) | 3 5/8" (±1/16") | 11 1/2" (±1/8") | 1/2" (±1/16") | 4 - 6 lbs. |
| Wirecut Brick (Standard) | 2 5/8" (±1/16") | 7 7/8" (±1/8") | 1/2" (±1/16") | 4 - 6 lbs. |
| Yukon Rubble | 1" - 8" | up to 24" | 1" - 2 1/2" | 7 - 10 lbs. |

All sizes and weights are nominal and may vary slightly depending on profile.
 Weight is based on one square foot of stone.
 Contact Coronado for further details.
 * Stone sizes within panels may vary.

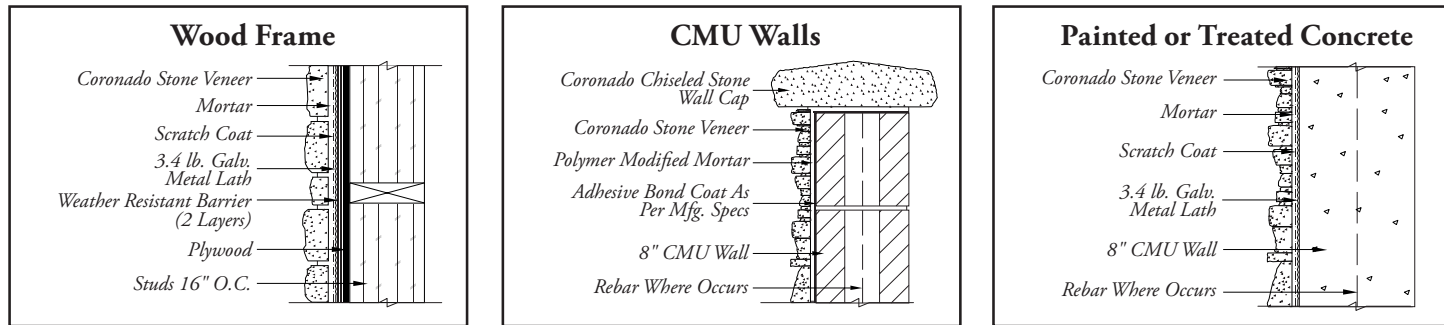
STONE COLOR INDEX @ PROJECT IMAGE CREDITS

| Color | View Color On Page |
|-------------------|--|
| Antique Cream | 46, 53, 70, 71 |
| Aspen | 38, 48, 54, 55, 58, 64, 66, 70, 72, 82, 97, 115 |
| Black Forest | 7, 10, 12, 21, 49, 50, 62, 78, 121-122 |
| Bordeaux | 41, 119 |
| Brookshire | 76, 127 |
| Brookside | 46, 50, 56, 57, 60, 61, 78, 99 |
| Cape Cod Grey | 32, 46, 54, 55, 60, 61, 63, 110, 115 |
| Carmel Mountain | 18, 42, 48, 52, 54, 58, 64, 71, 81, 85, 92, 103, 115 |
| Cathedral Grey | 1, 54, 56 |
| Chablis | 37, 42, 45, 48, 50, 51, 57, 61, 64, 65, 66, 71, 77, 78, 82, 91 |
| Coastal Brown | 48, 54, 55, 58, 70, 82, 89-90 |
| Country Beige | 7, 13, 14, 91 |
| Cream | 6, 8, 9, 14, 19-20, 21, 24 |
| Dakota Brown | 32, 35, 38, 40, 48, 57, 60, 62, 72, 73, 74, 77, 78, 81, 84, 85, 91, 104, 109, 113-114, 117 |
| Embassy Blend | 12, 14, 121-122 |
| English Grey | 53, 58, 76 |
| Falmouth | 1, 56 |
| Fawn | 62, 107-108 |
| Florentine | 39 |
| French White | 7 |
| Genoa Sands | 23, 24 |
| Grey | 23, 36 |
| Grey Quartzite | 42, 46, 47, 50, 52, 57, 63, 69, 70, 72, 81, 84, 91, 119, Back Cover |
| Harvard Grey | 6, 14 |
| Huron | 1, 46, 47, 52, 58, 82 |
| Lompoc | 67-68, 77, 85, 92, 111, 126 |
| Madison County | 36, 48, 57, 77, 84, 92 |
| Monarch | 39, 45 |
| Mountain Sunset | 83, 84 |
| Oakbrook | 26, 49 |
| Palazzo | 36 |
| Palomar Blend | 13, 121-122 |
| Pine Creek | 29-30 |
| Portabella | 38, 120 |
| Prairie Moss | 40, 120 |
| Provo Canyon Grey | 38, 58 |
| Roman | 10 |
| Romano | 40 |
| Sandstone | Cover, 72 |
| Shasta | 47, 52 |
| Silver Ash | 2, 3-4, 5, 8, 9, 12, 14, 121-122 |
| Sunset Blend | 35, 45, 60, 70 |
| Texas Cream | 35, 70, 71 |
| Verona | 38, 41, 116 |
| Versailles | 35, 42 |
| Volterra | 33-34, 38, 41, 92, 115 |
| Walnut | 21, 23 |
| Wheat | 57, 91, 97 |
| White | 2, 24, 50 |
| White Sands | 6, 11 |

| | | |
|--|--------------------------------------|--|
| Toll Brothers www.tollbrothers.com | Builder CA, AZ, NV | Cover, 6, 7, 17, 19-20, 45, 49, 96, 100, 102, 106, 127 |
| Arthur Rutenberg Homes www.arthurrutenberghomes.com | Builder Clearwater, FL | Back Cover, 69 |
| Rob Harris Productions, Inc. www.rob-harris.com | Photographer Tampa, FL | Back Cover, 69 |
| Infinity Home Collection www.infinityhomecollection.com | Builder Denver, CO | 3-4, 81 |
| Aron Photography www.aronphoto.com | Photographer Encinitas, CA | 7-8, 81 |
| Zephyr www.zephyrpartners.com | Builder Encinitas, CA | 10 |
| William Lyon Homes www.lyonhomes.com | Builder Newport Beach, CA | 11, 32 |
| Vance Fox Photography www.vancefox.com | Photographer Reno, NV | 11, 32 |
| Applied Photography LLC www.apgs.net | Photographer Orange, CA | 15-16, 21 |
| Lennar www.lennar.com | Builder Miami, FL | 15-16, 17, 25, 28 |
| KB Home www.kbhome.com | Builder Los Angeles, CA | 21 |
| Eric Figge Photography www.ericfiggephoto.com | Photographer Orange, CA | 24, 91 |
| Pardee Homes www.pardeehomes.com | Builder Bonsall, CA | 24, 104 |
| A.F. Sterling Homes www.afsterling.com | Builder Tucson, AZ | 27 |
| Wendy Black Rodgers Interior www.wbrint.com | Interior Designer Scottsdale, AZ | 33-34 |
| Castone www.castone.org | Distributor Knoxville, TN | 36 |
| Arizona Stone Products, LLC www.arizonastone.com | Distributor Mesa, AZ | 37 |
| Calvis Wyant Luxury Homes www.calviswyant.com | Builder Scottsdale, AZ | 37 |
| Gina Spiller www.ginaspillerdesign.com | Designer Monterey, CA | 37 |
| Mark Boisclair Photography, Inc. www.markboisclair.com | Photographer Phoenix, AZ | 37 |
| Timber Ridge Properties www.timberidgeproperties.net | Builder Denver, CO | 38, 65, 70, 73 |
| Weber Design Group www.weberdesigngroup.com | Builder Naples, FL | 39 |
| Tom Harper www.tomharperphotography.com | Photographer Naples, FL | 39 |
| Interior Expressions www.interiorexpressionsaz.com | Interior Designer Tucson, AZ | 40 |
| Stone Creek Furniture www.stonecreekfurniture.com | Remodeler Scottsdale, AZ | 42 |
| Christopher Mayer | Photographer Orange, CA | 45 |
| Maracay Homes www.maracayhomes.com | Builder Scottsdale, AZ | 49 |
| Fireplace Stone & Patio www.fireplacestonepatio.com | Distributor Omaha, NE | 53 |
| Built By Sky | Builder Calgary, AB | 53 |
| Sustain Scape www.sustainscapeaz.com | Landscape Designer Scottsdale, AZ | 58 |
| Process Design Build, L.L.C. www.processdesignbuild.com | Builder Tucson, AZ | 60 |
| Van Metre Homes www.vanmetrehomes.com | Builder Ashburn, VA | 63 |
| Red Rock Contractors www.buildredrock.com | Builder Mesa, AZ | 79-80 |
| Frontier Homes www.fhcommunities.com | Builder Moreno Valley, CA | 82 |
| EON Design Group www.eondesignco.com | Designer Los Angeles, CA | 89-90 |
| Shea Homes www.sheahomes.com | Builder Gilbert, AZ | 91, 95, 103 |
| CalAtlantic Homes www.calatlantichomes.com | Builder Las Vegas, NV | 93-94, 105 |
| Meritage Homes www.meritagehomes.com | Builder Phoenix, AZ | 98 |
| Mattamy Homes www.mattamyhomes.com | Builder Scottsdale, AZ | 99 |

Index of Typical Installation Types

View www.Coronado.com for detailed installation instructions




TECHNICAL DATA


Weight: The average packaged weight of Coronado Stone veneer is 8 to 12 lbs. per square foot. Weight varies with thickness.

Non-combustible: Testing on Coronado Stone showed zero flame spread and zero smoke development.

Integral Colors: Coronado's production process results in a product which maintains a natural stone appearance even after many years of exposure to the elements.

Approvals: Coronado Stone has been tested by independent laboratories and has been approved for its intended use by:

 ICC The International Conference of Building Officials. Report ESR-2598

 Texas Department of Insurance Product Approval Code. Evaluation ID EC-101

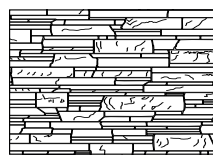
TECHNICAL DOWNLOADS

Visit www.CORONADO.com to download an extensive collection of technical data and specification sheets. Click on the (RESOURCES) link in the top menu bar to view the following items:

- Installation Specification Sheets
- Technical Data
- Cross-Section Details
- Hatch Patterns
- Stone Tileable Textures



Tileable Texture



Hatch Pattern

Coronado Stone is manufactured to meet or exceed specifications for all major code approvals. Independent testing confirms compliance with ICC-ES AC51 for Precast Stone Veneer. Always check your local building codes before installing stone.

Materials:

- Cement ASTM C150
- Sand ASTM C144 or C33
- Aggregate ASTM C33 or C330

Testing:

- Shear Bond Test Tested in accordance with ASTM C482 Greater than 50 psi
- Water Absorption Tested in accordance with section 3.1.4 & 4.6 of ICC-ES AC51
- Freeze / Thaw Tested in accordance with ASTM C67 Less than 3% mass loss
- Unit Weight Shipping weight is less than 15 lbs. per sq. ft. Density is determined in accordance with ASTM C567
- Compressive Strength Tested in accordance with ASTM C39 Greater than 1800 psi
- Tensile Strength Tested in accordance with ASTM C190
- Flexural Strength Tested in accordance with ASTM C348

Coronado Stone Products is dedicated to producing a superior manufactured stone veneer with the least amount of impact to our environment. With a combination of internal recycling techniques, products that increase levels of energy performance and 6 strategically placed facilities throughout the U.S. and Canada, Coronado Stone can help you achieve sustainable solutions for LEED requirements.

| LEED Credit Category | LEED Points | Intent | Requirements | Coronado Contribution |
|--|-------------|--|---|--|
| EA Credit:1 Energy & Atmosphere: Optimize Energy Performance | 2-10 | Achieve increasing levels of energy performance above the prerequisite standard to reduce environmental impact associated with excessive energy use. | Demonstrate a percentage improvement in the proposed building performance rating compared to the baseline building performance rating per ASHRAE/IESNA Standard 90.1—2004 | Coronado Stone Veneer products can add to the building energy efficiency of exterior walls. Overall efficiency contribution depends on architectural design. |
| MR Credit:4.1 or 4.2 Materials & Resources: Recycled Content: 10% or Recycled Content: 20% | 1-2 | Increase demand for building products that incorporate recycled content materials, therefore reducing the impact resulting from extraction and processing of virgin materials. | Use materials with recycled content, such that the sum of post-consumer recycled content plus one-half of the pre-consumer content constitutes at least 20% (based on cost) of the total value of the materials in the project. | Coronado Stone Veneer products can contribute to a project's overall recycled content. Recycled material is used in the production of Coronado's stone veneer which may vary between facilities. |
| MR Credit:5.1 or 5.2 Materials & Resources: Regional Materials: 10% or Regional Materials: 20% | 1-2 | Increase demand for building materials and products that are extracted and manufactured within the region, thereby supporting the use of indigenous resources and reducing the environmental impact resulting from transportation. | Use building materials or products that have been extracted, harvested or recovered, as well as manufactured within 500 miles of the project site for a minimum of 20% (based on cost) of the total materials value. | Coronado Stone has 6 strategically placed manufacturing facilities located in the U.S. & Canada which can provide a contribution to this category. (view map on page 116) |



Coronado Stone Products is Proud to be a Member of the U.S. Green Building Council.



50 YEAR LIMITED WARRANTY

Coronado Stone Products® wall veneers are protected under this warranty for a period of 50 years from the date purchased, when used on a vertical structure which conforms to local building codes and when installed in accordance with the manufacturer's instructions. Warranty coverage specifically excludes: damage resulting from structure settlement and other types of wall movement, contact with paint or chemicals, discoloration due to contaminants, staining, oxidation and water damage.

This warranty covers only manufacturing defects in Coronado Stone Products® wall veneers and is limited to the replacement or repair of defective materials only and does not cover the cost of removal or installation of defective products. This warranty is limited to the original purchaser and is non-transferable to any subsequent owner.



Santa Barbara - Brookshire (Coursed Pattern)

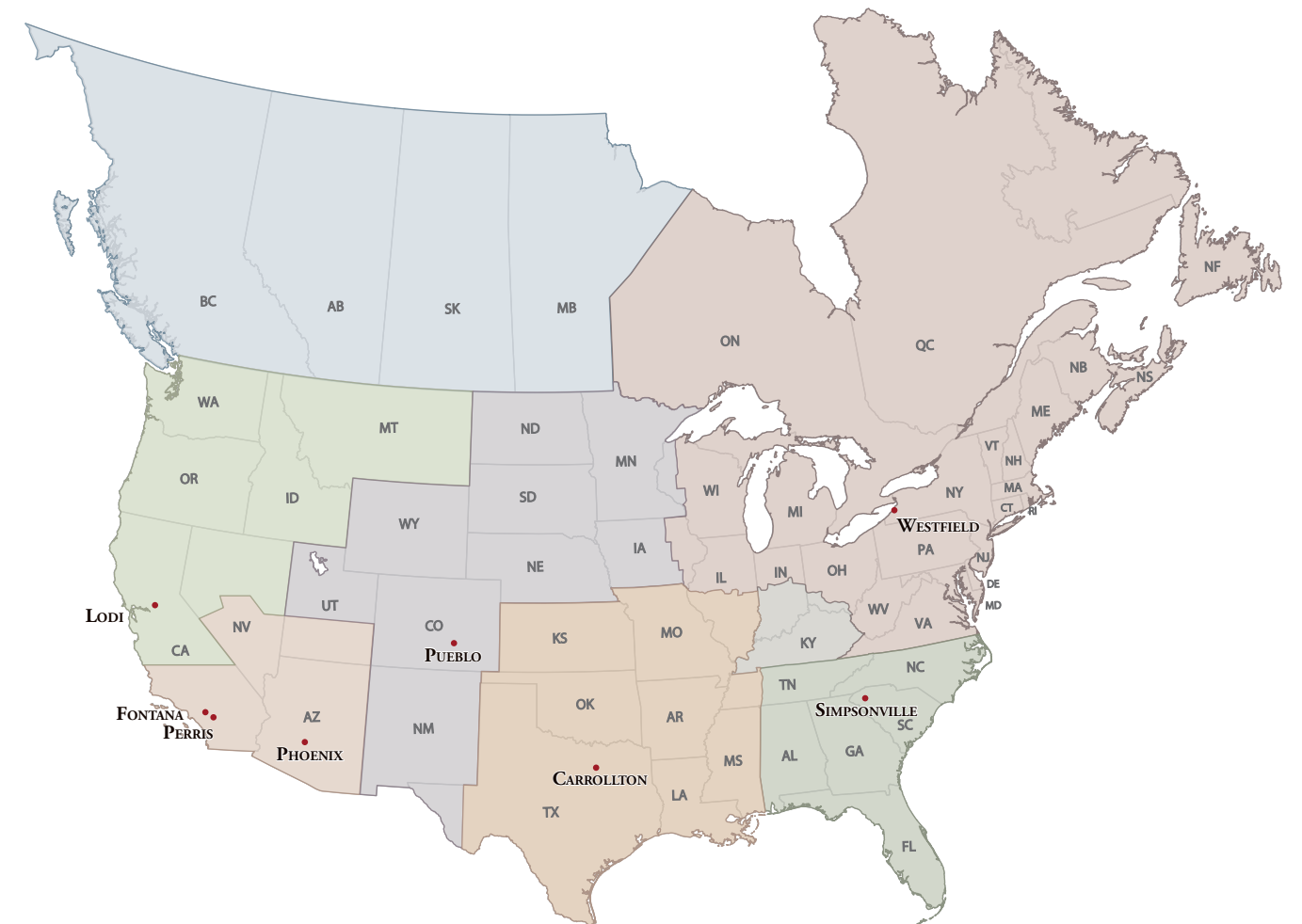
In 1960, there was only one stone manufactured in California. It was a 2½' x 4' sheet of concrete which was broken up into random shapes at the job site. Mel Bacon saw the need for something better and started making his own stone. He soon developed the first random shaped stones from individual molds which led to the development of many of today's popular varieties of ledge stones and ashlar patterns.

As a mason, Mel experienced the difficulty of installing stone that was not created with the installer in mind. It was heavy and the shapes and sizes were difficult to piece together. He realized that through proper pattern and mold design, ease of installation could be achieved. From that moment, ease of installation became the benchmark for every pattern of stone Mel created. Easy installation is not only a time saver, it's a project saver.

The pride we take in the creation of our product shows in the quality experience you will enjoy as one of our valued customers. Give Coronado the opportunity to make you a believer. Our mission is your satisfaction!

OVER 50 YEARS OF MANUFACTURING EXCELLENCE

Coronado manufactures and distributes its high quality stone at seven factories conveniently located across North America



Northwest Region serviced by the Lodi, CA Manufacturing Facility
(209) 334-1380

Mountain Region serviced by the Pueblo, CO Manufacturing Facility
(719) 470-7381

Central Region serviced by the Carrollton, TX Manufacturing Facility
(888) 567-2833

Northeast Region serviced by the Westfield, NY Manufacturing Facility
(716) 210-7828

Southwest Region serviced by the Fontana, CA Manufacturing Facility
(800) 847-8663

Coming Soon
Phoenix, AZ Manufacturing Facility
(602) 732-6558

Southeast Region serviced by the Simpsonville, SC Manufacturing Facility
(864) 962-1221



Old Country Ledge - Grey Quartzite

Five Dollars



CORONADO®

The Leader in Manufactured Stone, Brick and Tile Products

11191 Calabash Ave. • Fontana, CA 92337
Phone: (800) 847-8663 • Fax: (909) 357-7362
sales@coronado.com

WWW.CORONADO.COM

Due to photographic and printing variations, brochure colors may not be accurate. All sizes are nominal.
We suggest examination of Coronado product samples prior to purchase.