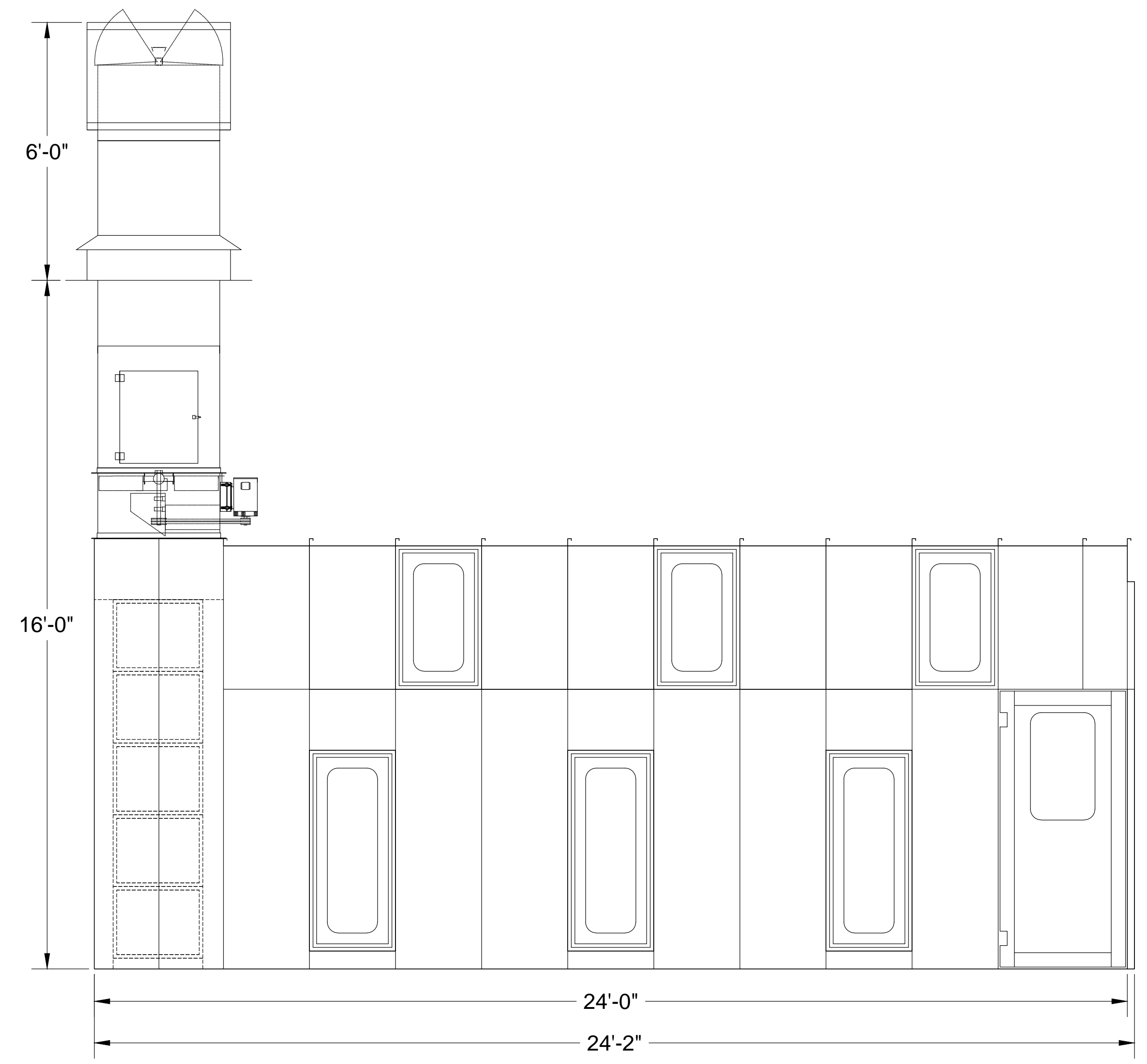
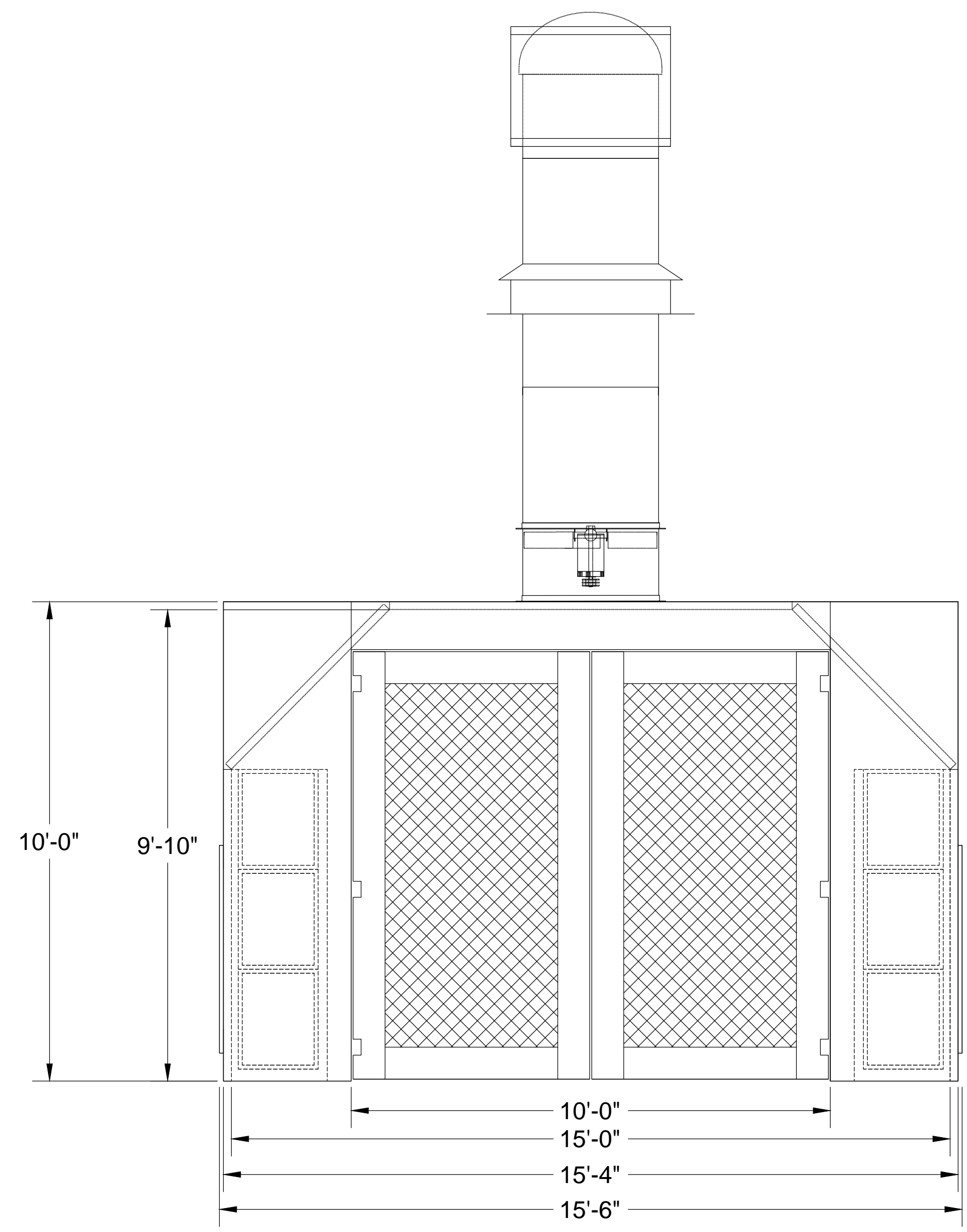




Intertek
 53993
 SPRAY APPLICATIONS
 USING FLAMMABLE
 AND COMBUSTIBLE
 MATERIALS
 CONFORMS TO NFPA STD.33



SIDE VIEW



FRONT VIEW

BOOTH SPECIFICATIONS

- * UNIT MODEL: ECFASA2412 (AUTO CROSSFLOW BOOTH)
- * LENGTH= 24'-2" O.D. / 24'-0" I.D.
- * WIDTH= 15'-6" O.D. / 15'-0" I.D.
- * HEIGHT= 10'-0" O.D. / 9'-10" I.D.
- * MAIN DOOR HEIGHT= 9'-0" TYPE: (SWING)
- * MAIN DOOR WIDTH= 10'-0"
- * MAN DOOR HEIGHT= 65"
- * MAN DOOR WIDTH= 35" INCLUDES OBSERVATION WINDOW
- * CONTROL PANEL=(1) CP1 MANUAL CONTROL PANEL

CONSTRUCTION

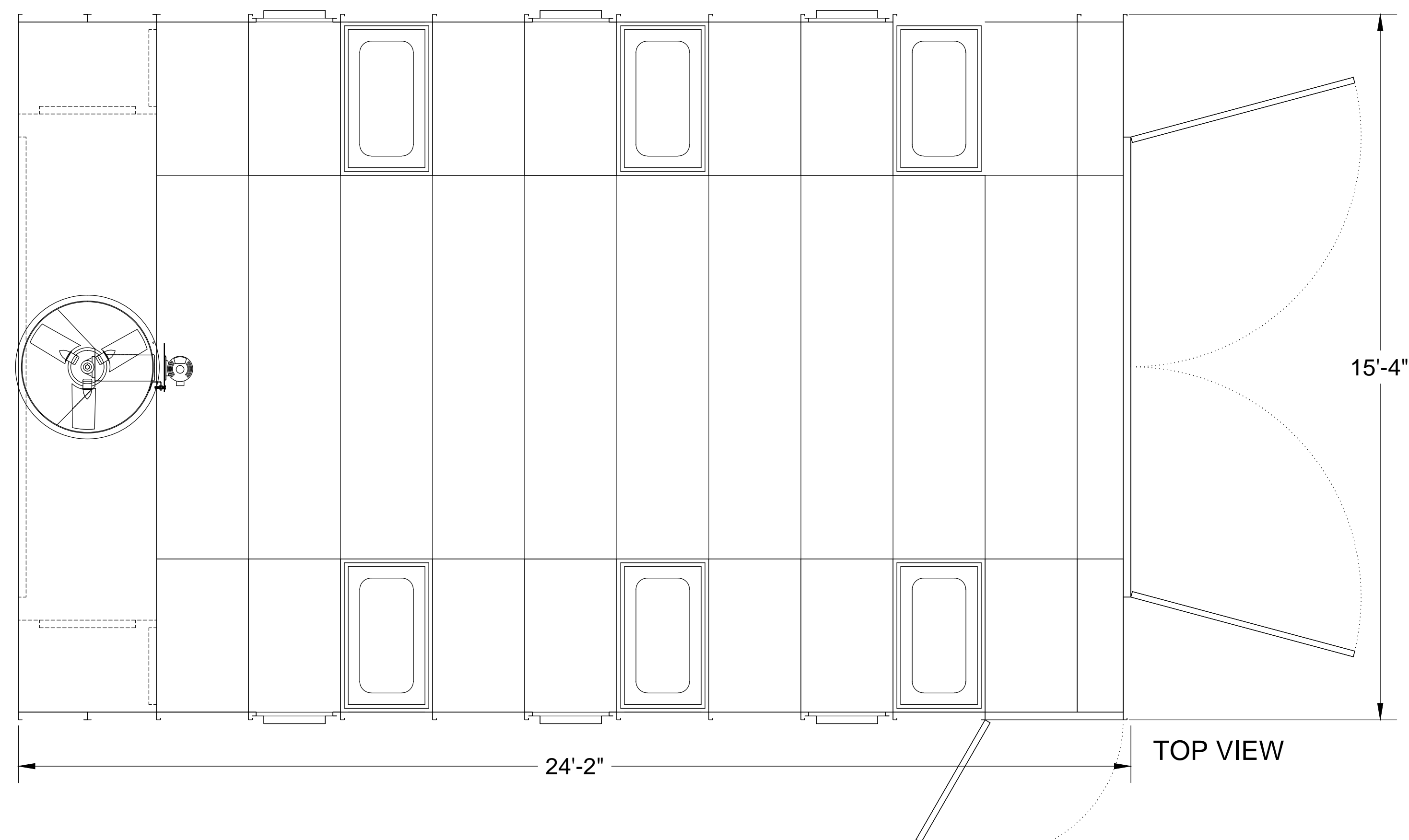
- * 18 GA. G-90 GALVANIZED STEEL PANELS WITH "LOCKING" SEAL FLANGES.
- * PANEL ASSEMBLY TYPE= 1/4" X 3/4" SELF-TAPPING SCREWS ON 12" CENTERS TYP.

EXHAUST SPECIFICATIONS

- * EXHAUST FAN TYPE= 1- 34" DIAMETER NON SPARKING BLADES
- * MOTOR TYPE= 1) 3HP / 3 PHASE.
- * VOLTAGE= 230 VOLT
- * CFM RATING= 14,000 @ 1/2" STATIC PRESSURE
- * INTAKE FILTERS= ONE SET SERIES 5000
- * EXHAUST FILTERS= (12) FIBERGLASS GA20 20" X 25"

LIGHTING SPECIFICATIONS

- * LIGHT FIXTURE TYPE= AFC205 4-TUBE FLOURESCENT
- * VOLTAGE= STANDARD: 277/60 HRTZ. AMPACITY: .9 PER FIXTURE.
- * QUANTITY= 12-EA. TOTAL
- * TYPE = STANDARD OPEN = 10A. / CLASS 1 DIV.2 = 2-EA.



TOP VIEW

REV.	DESCRIPTION	DATE	BY



AFC Finishing Systems

250 AIRPORT PARKWAY, OROVILLE, CA 95965
 (800) 331-7744 (530) 533-0179 (FAX)
<http://www.afc-ca.com> email: sales@afc-ca.com

THIS DRAWING IS THE PROPERTY OF AFC FINISHING SYSTEMS AND IS NOT TO BE LOANED, COPIED OR DUPLICATED UNLESS IN DIRECT CONNECTION WITH AFC FINISHING SYSTEMS. ALL RIGHTS RESERVED. THIS DRAWING MUST BE RETURNED UPON REQUEST BY AFC FINISHING SYSTEMS.

DRAWN FOR:

DESCRIPTION: DELUXE CROSSFLOW MODEL: ECFASA2412			
DRAWN BY: J.BARTON	CHECKED BY:	APPROVED BY:	DATE: 04/08/2019
INSTALLED BY:	FIELD CHANGED BY:	SCALE: 1/2"=1'	DRAWING NAME: ECFASA2412-ELEVATION