







WARNING!

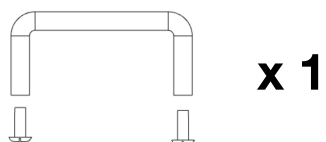
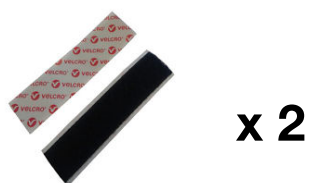
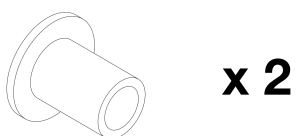
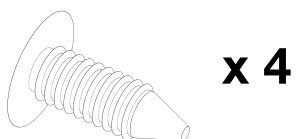
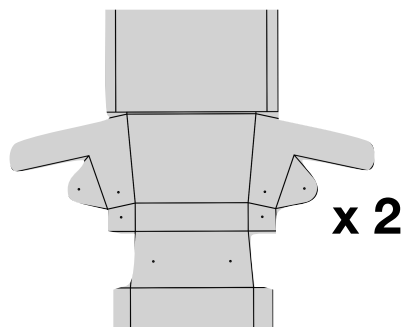
STOP AND READ BEFORE YOU ASSEMBLE AND USE YOUR BIKE BOX!

-  FOLLOW ALL INSTRUCTIONS IN THIS MANUAL
-  DO NOT EXCEED YOUR BIKE RACK'S WEIGHT LIMIT
-  DO NOT PLACE PEOPLE IN BIKE BOX
-  BIKE BOX MUST BE SECURED TO BIKE FRAME AND
BIKE BOX LIDS MUST BE SECURED BEFORE RIDING
-  OBEY ALL TRAFFIC SIGNS AND LAWS
-  ALWAYS WEAR A HELMET WHEN RIDING

**Failure to follow these instructions
may result in damage to the bike,
bike box, bodily injury and death.**

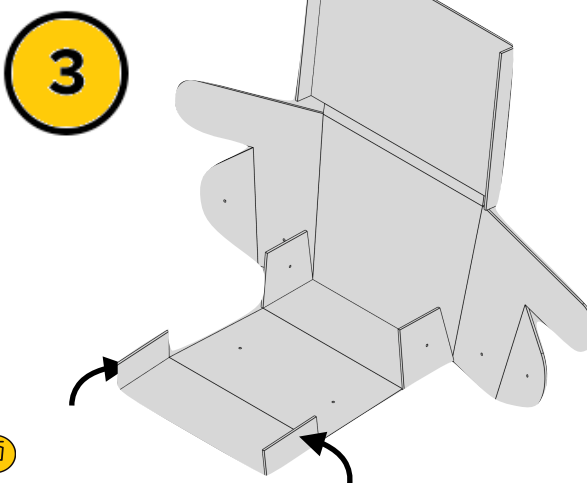
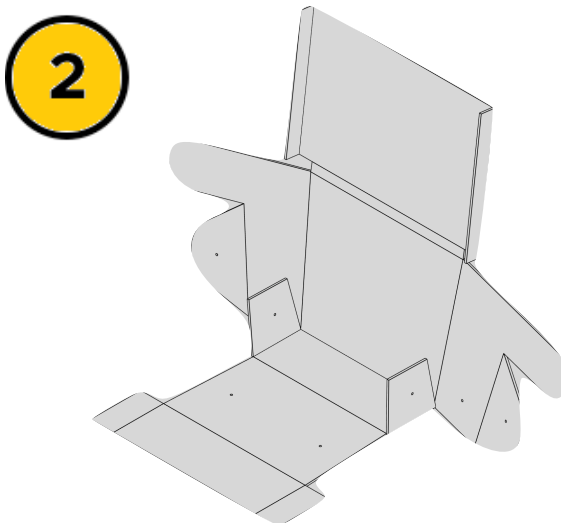
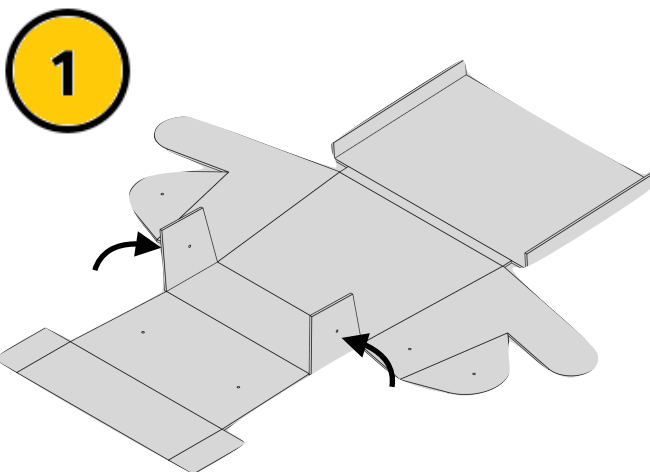
BIKE BOX KIT

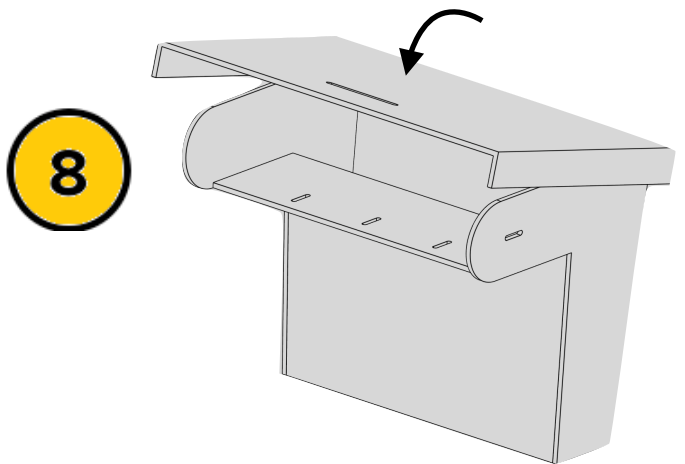
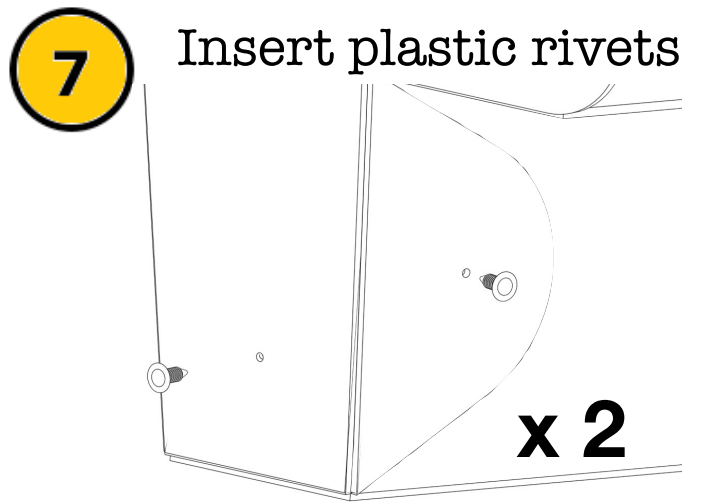
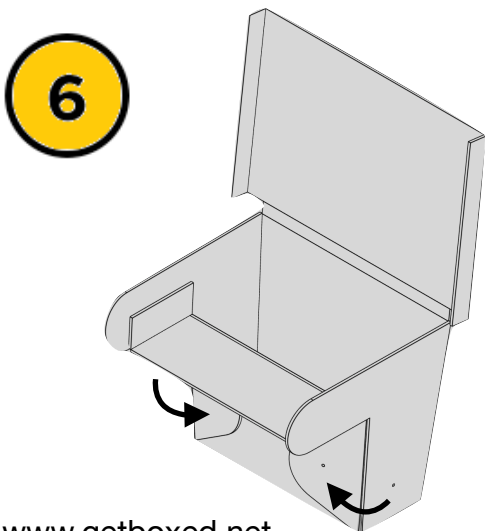
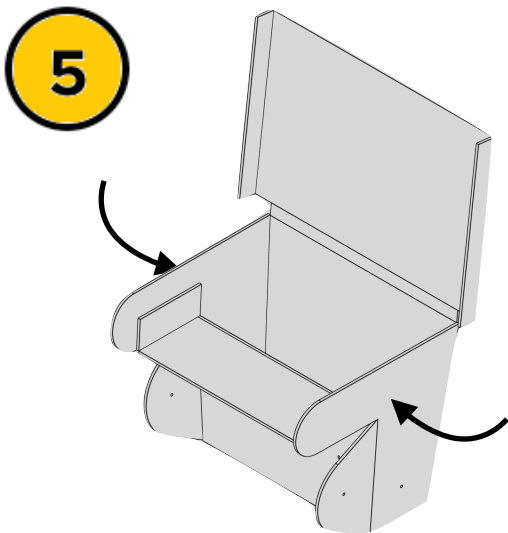
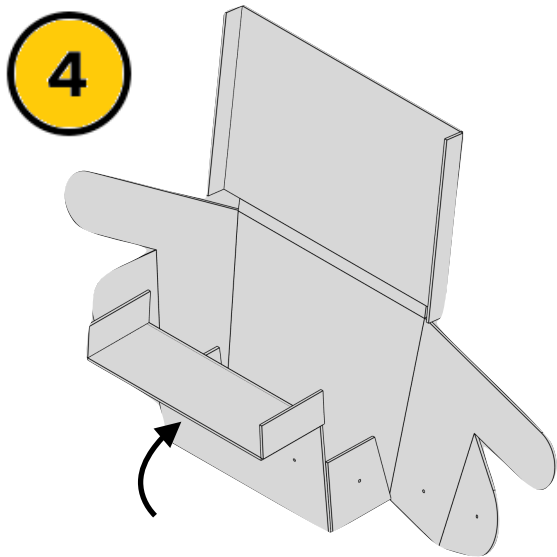
Congratulations! You now possess the latest in bicycle pannier technology. Your kit should contain:



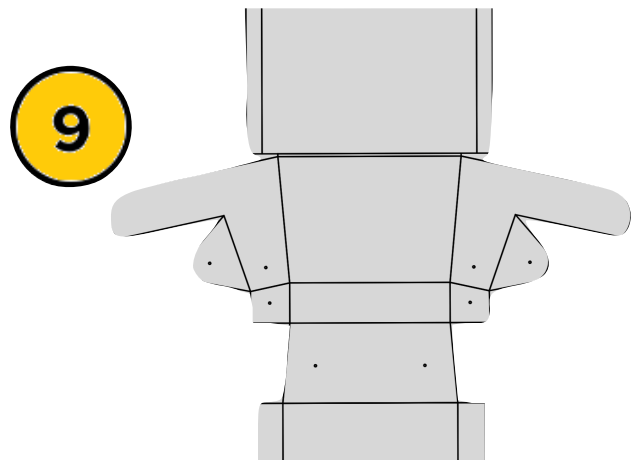
Got Everything?

You will need a screwdriver and a drill with a 1/8 inch bit.

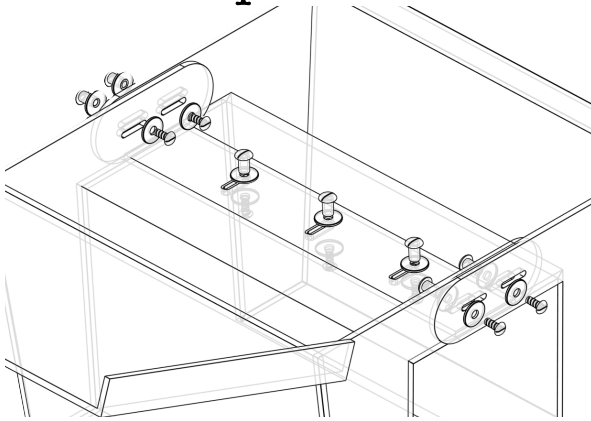




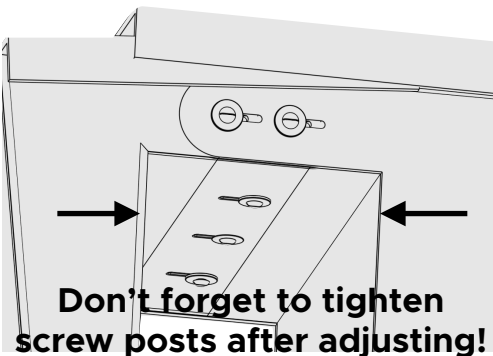
Repeat steps 1-8 on



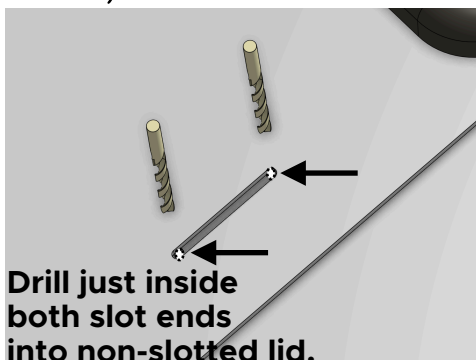
- 10** Mate panniers with 7 screw posts.



- 11** With screw posts slightly loosened, slide panniers until they hug your rack.



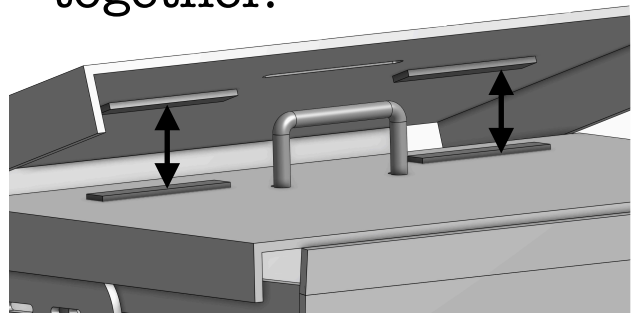
- 12** Using handle slot as guide with box on bike, drill two holes



- 13** Attach handle with screws, washers and nylon collars.



- 14** Attach velcro tape to overlapping parts of lid so they stick together.



- 15** Hook the bungee around the d-hooks and through the bike. Now take off!

