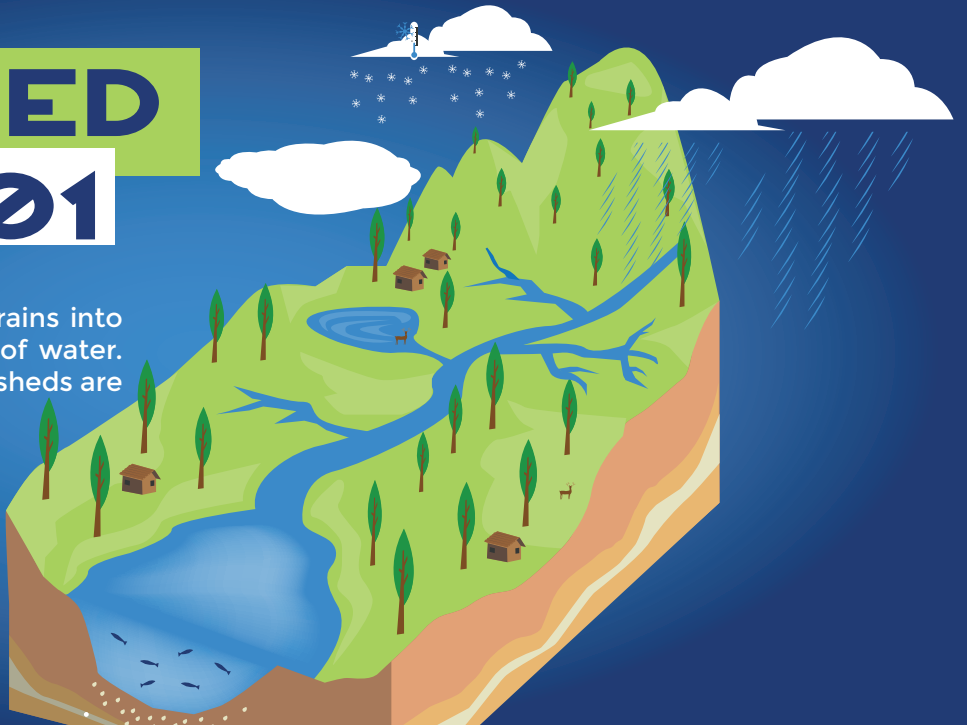


WATERSHED

101

WHAT IS A WATERSHED?

A watershed is an area of land that drains into a particular river, lake, or other body of water. We all live in a watershed. Some watersheds are made up of only one or two streams or creeks and are small. These are called subwatersheds. York County has 11 main watersheds which are part of the larger Chesapeake Bay Watershed.



WHY IS OUR WATERSHED IMPORTANT?

Everyone relies on water and other natural resources to exist. What we do impacts the quantity and quality of water. Our watersheds provide water for drinking, growing food, and recreation. Wildlife also requires healthy watersheds for both food and shelter.

SUSQUEHANNA RIVER BASIN



Includes all, or portions of, 66 Counties



York County is in the Lower Susquehanna



4 million people live here



Is home to the native Brook Trout



Has more than 49,000 miles of streams

YORK COUNTY IS COMPRISED OF 11 WATERSHEDS

Codorus | Conewago West | Deer Creek | East Branch Codorus | Gunpowder | Kreutz | Little Conewago
Muddy | Susquehanna | South Branch Codorus | Yellow Breeches

5 EASY WAYS

TO PROTECT OUR WATERSHED



Pick up trash and clear storm drains.



Turn off water when brushing your teeth.



Wash your car at a car wash.



Reduce the size of your mowed lawn by planting more native plants.



Pick up dog waste and dispose of it properly.

WAY

WATERSHED ALLIANCE OF YORK

 watershedallianceofyork.org

 [/WatershedAllianceOfYorkPa](https://www.facebook.com/WatershedAllianceOfYorkPa)

 [@wayorkpa](https://www.instagram.com/wayorkpa)

READ MORE ABOUT WATERSHEDS HERE!

