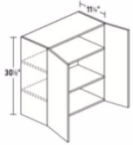


Cabinet Door Size Reference Sheet

Stock cabinetry comes in standard increments of 3".

This is suggested sizing based on industry standards. Remember to double check your individual door and drawer measurements.

1) Wall Cabinets.



W = Wall Cabinet

24 = Cabinet Width

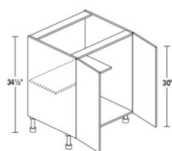
30 = Cabinet Height

Ex. W2430

= Wall Cabinet, 24" Width, 30" Height.

Cabinet Size	Door Quantity	Door Width	Door Length
W0930	1	8-7/8	29-7/8
W1230	1	11-7/8	29-7/8
W1530	1	14-7/8	29-7/8
W1830	1	17-7/8	29-7/8
W2130	1	20 3/4	29-7/8
W2430	2	11 7/8	29-7/8
W2730	2	13-3/8	29-7/8
W3030	2	14 7/8	29-7/8
W3330	2	16-3/8	29-7/8
W3630	2	17-7/8	29-7/8

2) Full Height Door Base Cabinets



BH = Base Cabinet Full Height

24 = Cabinet Width

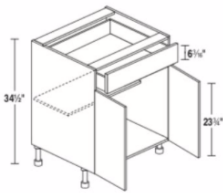
Every base cabinet is standard height of 34.5" including 4.5" toe kick.

Ex. BH24

= Full Height Base Cabinet, 24" Width, 30" Height.

Cabinet Size	Door Quantity	Door Width	Door Length
BH12	1	11 7/8	29-7/8
BH15	1	14 7/8	29-7/8
BH18	1	17 7/8	29-7/8
BH21	1	20-7/8	29-7/8
BH24	2	11-7/8	29-7/8
BH27	2	13-3/8	29-7/8
BH30	2	14-7/8	29-7/8
BH33	2	16-3/8	29-7/8
BH36	2	12-7/8	29-7/8

3) One Drawer / Two Door Base Cabinet



BD = Two Door, One Drawer Base Cabinet

24 = Cabinet Width

Every base cabinet is standard height of 34.5" including 4.5" toe kick.

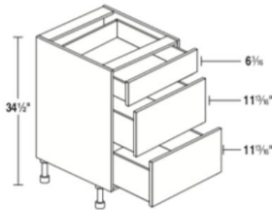
Ex. BD24

= One Drawer Two Door Base Cabinet, 24" Width, 34.5" Height.

Cabinet Size	Door Quantity	Door Width	Door Length
BD12	1	11-7/8	23-7/8
- Drawer	1	11-7/8	5-7/8

BD15	1	14-7/8	23-7/8
- Drawer	1	14-7/8	5-7/8
BD18	1	17-7/8	23-7/8
- Drawer	1	17-7/8	5-7/8
BD21	1	20-7/8	23-7/8
- Drawer	1	20-7/8	5-7/8
BD24	2	11-7/8	23-7/8
- Drawer	1	23-7/8	5-7/8
BD27	2	13-3/8	23-7/8
- Drawer	1	26-7/8	5-7/8
BD30	2	14-7/8	23-7/8
- Drawer	1	29-7/8	5-7/8
BD33	2	16-3/8	23-7/8
- Drawer	1	32-7/8	5-7/8
BD36	2	17-7/8	23-7/8
- Drawer	1	35-7/8	5-7/8

4) Three Drawer Banks



DB-3 = Drawer Bank – 3 Drawers

24 = Cabinet Width

Every base cabinet is standard height of 34.5” including 4.5” toe kick.

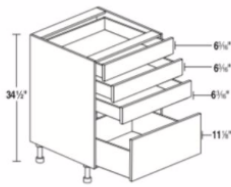
Ex. DB18-3

= Drawer Bank – 3 Drawers, 24” Width, 34.5” Height.

Cabinet Size	Drawer Quantity	Drawer Width	Drawer Length
DB12-3	1	11-7/8	5-7/8
	2	11-7/8	11-7/8
DB15-3	1	14-7/8	5-7/8
	2	14-7/8	11-7/8
DB18-3	1	17-7/8	5-7/8

	2	17-7/8	11-7/8
DB21-3	1	20-7/8	5-7/8
	2	20-7/8	11-7/8
DB24-3	1	23-7/8	5-7/8
	2	23-7/8	11-7/8
DB27-3	1	26-7/8	5-7/8
	2	26-7/8	11-7/8
DB30-3	1	29-7/8	5-7/8
	2	29-7/8	11-7/8
DB33-3	1	32-7/8	5-7/8
	2	32-7/8	11-7/8

5) Four Drawer Banks



DB-4 = Drawer Bank – 4 Drawers

24 = Cabinet Width

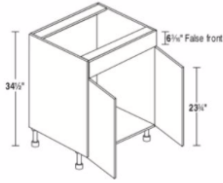
Every base cabinet is standard height of 34.5" including 4.5" toe kick.

Ex. DB24-3

= Drawer Bank – 4 Drawers, 24" Width, 34.5" Height.

Cabinet Size	Drawer Quantity	Drawer Width	Drawer Length
DB12-4	3	11-7/8	5-7/8
	1	11-7/8	11-7/8
DB15-4	3	14-7/8	5-7/8
	1	14-7/8	11-7/8
DB18-4	3	17-7/8	5-7/8
	1	17-7/8	11-7/8

6) Sink Base



SB= Sink Base

24 = Cabinet Width

Every sink base cabinet is standard height of 34.5" including 4.5" toe kick.

Ex. SB24

= Sink Base, 24" Width, 34.5" Height.

Cabinet Size	Door Quantity	Door Width	Door length
SB24	2	11-7/8	5-7/8
- Faux Drawer	1	23-7/8	23-7/8
SB27	2	13-3/8	5-7/8
- Faux Drawer	1	26-7/8	23-7/8
SB30	2	14-7/8	5-7/8
- Faux Drawer	1	29-7/8	23-7/8
SB33	2	16-3/8	5-7/8
- Faux Drawer	1	32-7/8	23-7/8
SB36	2	17-7/8	5-7/8
- Faux Drawer	1	35-7/8	23-7/8