

When unpacking, make sure that the product is intact and undamaged. If any parts are missing or damaged please get in contact to the stockist who you ordered through.



X15 CARBON



Visit www.bennuspraysystems.co.uk for more information

User Manual and Safety Instructions

Save This Manual— Keep this manual for the safety warning and precautions, operation, inspection, inspection, maintenance and cleaning procedures.

Keep this manual in a safe and dry place for future reference.

Read this material before using this product. Failure to do so can result in serious injury.



WARNING

Take care of the threaded parts, being nylon they are prone to damage or cross-threading if used without care and attention, left dirty or forced on.

Failure to keep threads clean and used with care may result in damage and failure of the parts.



X15 CARBON

Index

1. Machine Description/ Specification
2. Safety Information
3. Setup/ Operation
4. Cleaning/ Maintenance/ Guarantee
5. FAQ
6. Parts Breakdown

Contact Us

Email: info@bennuspraysystems.co.uk



Find us on our Facebook page
[@bennuspraysystems](https://www.facebook.com/bennuspraysystems)

Follow us on Twitter to keep up to date
on all the Bennu news



Check out our YouTube channel for Info and
Tutorial Videos.

Download this Manual as a PDF on our
website www.bennuspraysystems.co.uk



For info about this sprayer and our whole range of spraying equipment head over to our website

www.bennuspraysystems.co.uk

Machine Description:

The “**Bennu x-15 Carbon**” is new and improved version of the X15 sprayer. Its new lightweight design and custom stainless steel spiral make this new sprayer lighter and more powerful than its predecessor.

This sprayer is a self-contained unit where the loading, conveying and spraying take place to make the unit more mobile.

The sprayer is versatile and can be powered by either battery, corded or air drill that has a 13mm chuck or bigger. (Drill not included)

For spraying, an air compressor fitted with a regulator is required. (Compressor not supplied)

Specifications:

Product Type:	Sprayer
Model:	X15 Carbon
Product Length:	35cm
Product Weight:	1080g
Litres per minute:	Upto 6L per min
Hopper Capacity:	5L
Recommended Drill Requirements:	Good quality drill with 4ah battery or better with 18v Li-Ion Battery RPM 1400-2000 (with 13mm chuck or above)
Average Number of buckets per 5ah battery:	2 / 3 Buckets Approx.
Recommended Air Compressor:	Above 14cfm with a 50 litre tank (an air regulator is also required)
Air Fitting Type:	UK Style PCL Male Quick Release Fitting
6.5mm Nozzle:	1mm to 2mm Topcoats and some surface primers

Bennu Spray Systems. All rights reserved. No portion of this manual or any artwork contained herein may be reproduced or copied in any shape or form without written consent of Bennu Spray Systems. Diagram included within may not be drawn proportionally and only used for reference. Due to continuing improvements, actual product may differ slightly from the product described herein. The specification is correct at the time of publishing. We reserve the right to change the specification at any time without prior notice. Tools required for assembly and maintenance may not be included.

For technical advice and questions please contact us at info@bennuspraysystems.co.uk

IMPORTANT SAFETY INFORMATION



WARNING

Please read all instructions before using this unit.



DANGER!

Check air fitting before use and never spray directly at people, failure to do so may result in injury or death.



PPE MUST BE WORN!

PPE must be worn when spraying and loading of this sprayer.

(Protective Gloves, FFP3 Mask, Protective Safety Glasses)



FOR YOUR SAFETY

- Operatives must be trained and competent to operate the sprayer.
- Ensure all equipment is undamaged and fit for purpose. Replace any defected or damaged components.
- Make sure all fittings are tight before use, including the shaft clamp.
- Do not place hand inside hopper when sprayer is running.
- Disconnect drill before repairs or maintenance is carried out.
- Do not overfill the hopper or carry more than is comfortable.
- Always check COSHH reports of materials used for recommended work practices and safety equipment to be worn.
- Take regular breaks and consult the drill manual for safe use.

Setup & Assembly:

- The drills chuck should be tightened onto the spiral shaft at the rear of the sprayer.
- For 1.5mm Topcoat the air compressor should be set to 34-38 psi using the regulator. Attach one end of the air hose to the compressor and the other end to the sprayer, making sure they are connected correctly and secure. *(other air pressures will be need for different product application)*
- Mix the top coat thoroughly according to manufacturer's guidelines. Clean water should be added to each bucket when mixing to achieve the best spraying consistency. Drills will struggle with thick top coat and will not spray correctly.
- Make sure the top coat is free from dry lumps which may cause blockages. Dry material on the side of buckets is a common cause of blockages.
- Before spraying top coat add approximately 500ml of clean water in the hopper and let it drain out of the end of the sprayer to lubricate the inside.
- Half fill the hopper with topcoat and point into an empty bucket. Start the drill allowing the top coat to flow through to prime the sprayer ready for spraying. Once a constant stream of topcoat is coming out stop the drill.
- Once the sprayer has the topcoat bleed through you are ready to begin spraying.

Operation:

- Ensure the air valve on the sprayer is closed.
- Start the air compressor. Let the tank fill before you begin spraying.
- Fill the hopper with topcoat ensuring it is comfortable to lift. **Do not overfill as this can cause injury.**
- Go to area that needs to be sprayed. Point the sprayer at the wall one hand holding just under the hopper the other on the drill.
- Open the air tap located at the front of the sprayer. To start spraying pull the trigger on the drill, the fastest the drill goes the more topcoat will be sprayed out.
- Keep the sprayer about 40cm from the wall and square on for best results.
- For detailed work like reveals, soffit line and corner use a slower speed, don't press the drill trigger so hard to get a slower, more controlled spray pattern.
- Once the hopper is empty stop the drill and turn off the air tap to let the compressor fill while you refill the hopper. Repeat this process till the job is finished.
- Pauses in spraying should be no longer than 60 minutes and less in hotter conditions. If it's going to be longer clean out the nozzle upon return.

Cleaning:

- Once spraying is complete turn off the air valve and compressor. Then unclip the air hose.
- Empty the remaining top coat in to the tub using the drill to push it out.
- Once it is empty take off the nozzle and unscrew the rear spiral and use a hose pipe to clean through. **Do Not** take the sprayer head apart, this will reduce the chances of dirt getting into the threads and damage occurring, instead open the air tap and push clean water from the hose back through into the air passage to clean it out.
- Make sure all threads are clean and clear of topcoat, being nylon they can be easily damaged or cross threaded if care is not taken. A small amount of silicone spray on the threads will increase lifespan and **Do Not** force the threads together.
- Clean all parts with clean water and nylon brush. **Do Not** use a wire brush this will scratch and damage some parts. If there is dry topcoat on the sprayer lightly scrape off bigger lump and use a solvent based cleaner with a microfiber cloth to clean stubborn dried topcoat.
- Make sure all the main material is clean, as not to cause blockages in later applications. Also use a pin or nozzle cleaning brush to clean the air holes.
- Once cleaned use a silicone spray lubricant on the rear seal to make it last longer and keep it running smooth.

Maintenance:

- Keep all seals lubricated after every use.
- Keep the rear shaft collar tight on the spiral. This may come lose over time and will need retightening.
- Over time the abrasive nature of the topcoat will wear the nylon tube, material tube inside the spray head and the rear seal.
- Wore parts should be replaced to keep the sprayer working in the best way.

Guarantee:

- The sprayer is guaranteed for 3 months from purchase date. Not including parts that wear due to use (i.e. seal rings, nylon pipe and front reducing pipe) or signs of misuse or lack of care and attention.
- The dated invoice counts as evidence for guarantee claims.
- The guarantee is only valid if original spare parts are used.

Follow the QR Code link to our YouTube Channel to see our 'How To Guides' showing how to replace parts and maintenance of the X15 Carbon.



FAQ:

Q: What size nozzle do I need?

A: For 1mm to 2mm top coat a 6.5mm nozzle, an 8.5mm nozzle if for 3mm topcoat and light Tyrolean and a 10.5mm nozzle is for a heavy Tyrolean finish.

Q: My drill is struggling and the batteries are not lasting long?

A: The first thing to check is the topcoat. Most topcoats are stiff in the bucket so clean water will need to be added when mixing to achieve the right consistency. (See our web site for videos on top coat consistency). Check the chamber where the spiral is, if not cleaned properly a build up of dry top coat will also put strain on the drill. We also recommend an 18v drill so it has enough power to run the sprayer with ease.

Q: What compressor do I need to run the Benu X-15 Carbon?

A: The tested minimum air compressor is an 8cfm compressor with a 50L tank. But we recommend getting a 14cfm with 50L tank, so that the compressor isn't working to its max level all the time. Also, a good air regulator is a must, to get a constant air supply to get a consistent spray pattern.

Q: How long can I go with the air pipe?

A: We have tested Benu X15 Carbon with 100m of 10mm ID Air Hose and the pressure is still good.

Q: Why has my spray pattern changed?

A: Check the air holes in the nozzle for blockages and clean through with a small pin or nozzle brush. Also keep the material that is being sprayed, at the same consistency throughout the job, adding the same amount of water to each bucket and mixing to make them all consistent.

Q: There is no topcoat coming out when I run my drill?

A: First thing to check for blockages in the sprayer, dried topcoat from the side of a bucket or dirty mixer is normally the cause. Remove the nozzle and flush top coat with out the nozzle. If the topcoat is flowing, the nozzle is blocked and needs cleaning out. Make sure the drill is in forwards so the material flows the right way.

Q: How long before I need to change wearing parts?

A: On average in testing the nylon pipe sprays between 30 and 60 buckets of 1.5mm topcoat before needing to be replaced. However different consistencies and brand may alter the wearing rate along with the speed of the drill during use. We recommend changing the rear seal after 80 to 100 buckets.

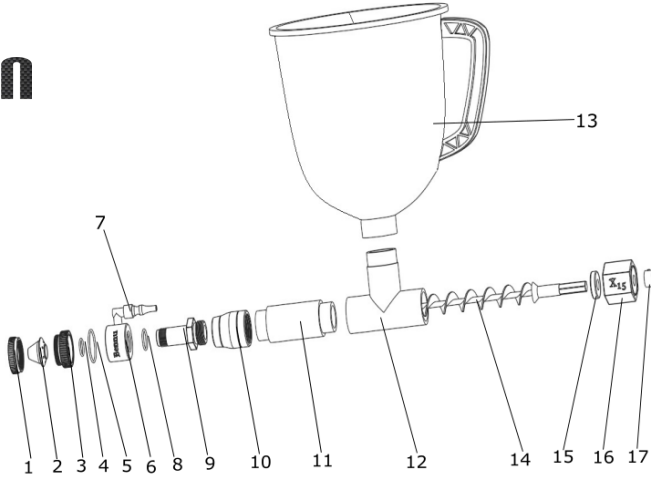
If there is a question that hasn't been cover here, that you need answering check our website at www.bennuspraysystems.co.uk

or

Email our technical team at info@bennuspraysystems.co.uk



Bennu
X15
CARBON



Ref Num	Part Name	Part Num
1.	Nozzle Ring	BXC001
2.	Nozzle	BXC002
3.	Nozzle Holder	BXC003
4.	O-Ring 1	BXC004
5.	O-Ring 2	BXC005
6.	Air Housing Body	BXC006
7.	Air Tap and Fitting	BXC007
8.	O-Ring 3	BXC008
9.	Material Pipe	BXC009
10.	Reducer	BXC010
11.	Nylon Material Tube	BXC011
12.	Main Body	BXC012
13.	Hopper	BXC013
14.	Stainless Steel Spiral	BXC014
15.	Rear Seal	BXC015

If you need a replacement part contact one of our stockists or email our sales team at info@bennuspraysystems.co.uk