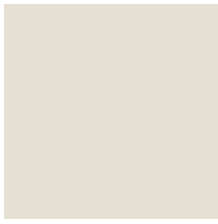


30 Year Finish Warranty Architectural Stock Colors

Stocked in 4mm unless otherwise stated

SOLID



BNT Bone White
4-BNT-30
LRV 78.50/SRI 82-Cool



CRT Oyster
4-CRT-30
LRV 72.46/SRI 82-Cool



MST Mist White
4-MST-30
LRV 69.96/SRI 75-Cool



AGT Aluminum Grey
4-AGT-30
LRV 31.60/SRI 26



BGY Grey
4-BGY-50
LRV 10.41/SRI 7



CNC Charcoal
3-CNC-30
LRV 4.20
3&4mm



JBR Bronze
4-JBR-30
LRV 3.34/SRI 2



TOB Black
4-TOB-15
LRV 1.01/SRI 0

Order samples at
www.alpolic-americas.com/samples

MICA



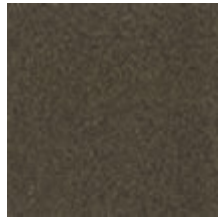
OPT Mica Platinum
4-OPT-50
LRV 30.88/SRI 53-Cool



MNC Mica Anodic Clear
4-MNC-30
LRV 34.43/SRI 56-Cool



MCU Mica Champagne
4-MCU-30
LRV 22.61/SRI 38-Cool



MZG Mica Grey
4-MZG-50
LRV 7.95/SRI 14



MFS Mica Grey
4-MFS-30
LRV 13.41

METALLIC



BSX Metallic Silver
4-BSX-30
LRV 30.94/SRI 71-Cool



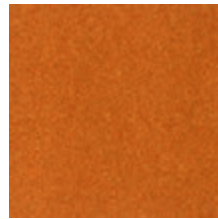
SMX Metallic Silver
4-SMX-30
LRV 36.59/SRI 63-Cool



CMX Metallic Champagne
4-CMX-30
LRV 31.19/SRI 59-Cool



MBX Metallic Bronze
4-MBX-30
LRV 31.20/SRI 40-Cool



DCX Metallic Copper
4-DCX-30
LRV 15.09/SRI 47-Cool

Premium Architectural Stock Finishes

Call ALPOLIC® Customer Service for Warranty Details 800.422.7270

NATURAL METALS



4HL Stainless
4-4HL
LRV 21.84/SRI 34-Cool



AZZ Quartz Zinc
4-AZZ
LRV 21.51/SRI 0



C12 Copper
4-C12
LRV 5.03/SRI 55-Cool

ANODIZED



CLR Clear Anodized
4-CLR
LRV 34.31/SRI 84-Cool

*Colors shown are as close to actual colors as allowed by the printing process. Mitsubishi Chemical America, Inc. reserves the right to change or delete information herein without prior notice. Please refer to warranty details for exclusions and limitations. Additional warranty coverage may be given to some projects/products. Please call 800.422.7270 for more information.

SOLID



BBR Red
4-BBR-30
LRV 8.06
3&4mm



BTR Red
4-BTR-50
LRV 11.57
3&4mm



TOR Red
4-TOR-70
LRV 9.06



JLR Red
4-JLR-50
LRV 5.44



JXR Red
4-JXR-30
LRV 10.50



TRC Red
4-TRC-30
LRV 8.52



AUB Blue
4-AUB-50
LRV 3.25



CVB Blue
4-CVB-70
LRV 13.79



HNB Blue
4-HNB-50
LRV 16.78



RTB Blue
4-RTB-60
LRV 9.06



MBU Blue
4-MBU-30
LRV 10.59



HYB Blue
4-HYB-30
LRV 4.20



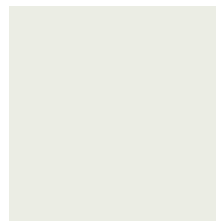
ABE Blue
4-ABE-70
LRV 23.73



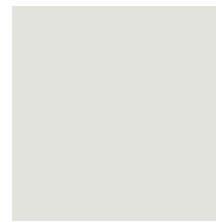
AMOX Blue
4-AMOX-30
LRV 0.26



TDR Green
4-TDR-70
LRV 24.40



RVW White
4-RVW-50
LRV 86.34

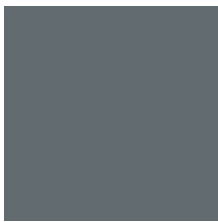


HWH White
4-HWH-50
LRV 80.8



COW White
4-COW-30
LRV 68.67

MATTE



CVG Grey
4-CVG-50
LRV 14.38
3&4mm



BLX Black
4-BLX-30
LRV 0.89
3&4mm



TBL Black
4-TBL-70
LRV 0.75
3&4mm



RRM River Rock Grey
4-RMM-6
LRV 23
SRI 17

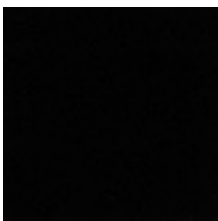


TRM Terra Cotta
4-TRM-6
LRV 17
SRI 12



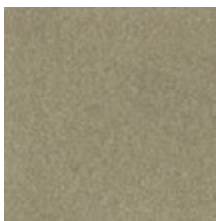
BSM Slate Black
4-BSM-6
LRV 5
SRI 1

MICA

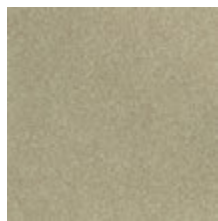


MRO Anthracite Grey
4-MRO-70
LRV 3.33

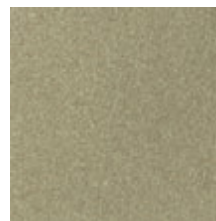
METALLIC



PEX Metallic Pewter
4-PEX-30
LRV 20.63



TSZ Metallic Silver
4-TSZ-70
LRV 32.00



TBX Metallic Silver
4-TBX-30
LRV 38.75
3&4mm

SOLID



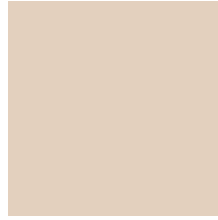
STR Red
3-STR-70
LRV 12.55



TRD Red
3-TRD-70
LRV 10.26



FEF Red
3-FEF-70
LRV 11.64



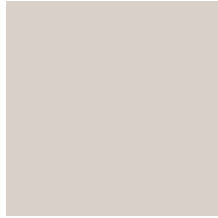
BPS Pearl
3-BPS-30
LRV 68.79



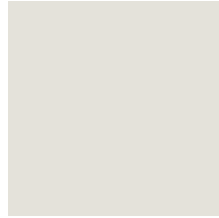
ETT Tan
3-ETT-30
LRV 47.87



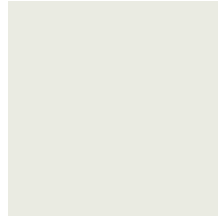
CRY Oyster
3-CRY-50
LRV 72.30



MCV White
3-MCV-70
LRV 68.21



SAW White
3-SAW-70
LRV 80.62



EWH White
3-EWH-70
LRV 90.01



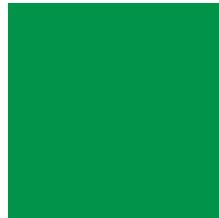
DYB Blue
3-DYB-50
LRV 10.06



CFB Blue
3-CFB-70
LRV 7.24



SHB Blue
3-SHB-70
LRV 4.12



BGN Green
3-BGN-50
LRV 14.39



GRV Green
3-GRV-30
LRV 11.25



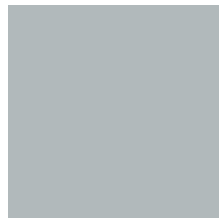
BYL Yellow
3-BYL-50
LRV 65.93



EYL Yellow
3-EYL-70
LRV 48.05



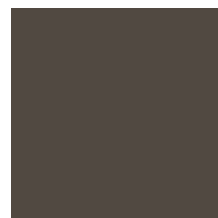
YLW Yellow
3-YLW-50
LRV 49.88



SOG Grey
3-SOG-70
LRV 49.50



TXG Grey
3-TXG-70
LRV 40.69



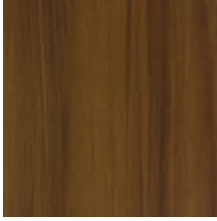
SBR Bronze
3-SBR-30
LRV 6.32

Order samples at www.alpolic-americas.com/samples

*Colors shown are as close to actual colors as allowed by the printing process. Mitsubishi Chemical America, Inc. reserves the right to change or delete information herein without prior notice. Please refer to warranty details for exclusions and limitations. Additional warranty coverage may be given to some projects/products. Please call 800.422.7270 for more information.

Specialty Stock Colors/Finishes

TIMBER SERIES | 20 Year Finish Warranty | Call ALPOLIC® Customer Service for Warranty Details



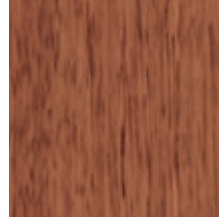
QBB Teak
4-QBB-30
LRV N/A



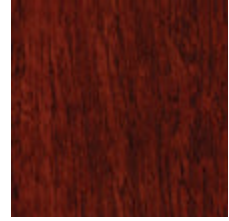
QCP HT Bamboo
4-QCP-30
LRV N/A



MPL Maple
4-MPL-30
LRV N/A



WLN Walnut
4-WLN-30
LRV N/A



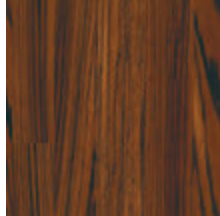
QAE Mahogany
4-QAE-30
LRV N/A



QBV Oriental Cane
4-QBV-30
LRV N/A

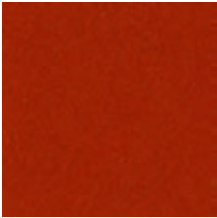


QBT Zebrawood
4-QBT-30
LRV N/A



QAW Rio Aleon
4-QAW-30
LRV N/A

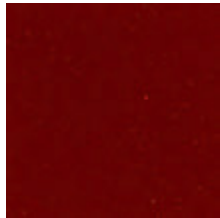
EFFECTS SERIES | Call ALPOLIC® Customer Service for Warranty Details



MRT Prismatic Magma
3-MRT-70
LRV 11.33

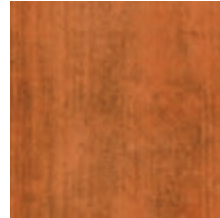


DQO Pearlescent Orange
3-DQO-70
LRV 22.21

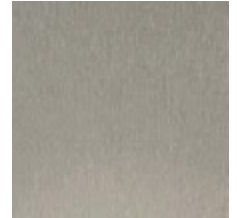


DQS Shimmer Maroon Gold
4-DQS-70
LRV 5.09
4mm only

PATTERN | 20 Year Finish Warranty



QCO Rusted Steel
4-QCO-20
LRV 16.17



FZZ Brushed Metal
4-FZZ-4
LRV 0.33

MULTI-COLOR



Red/White
10 Year Finish Warranty
3-209-70
LRV 11.64
SRI 80.90



Blue/White
10 Year Finish Warranty
3-207-70
LRV 8.00
SRI 81.04



Yellow/White
10 Year Finish Warranty
3-234/238-35
LRV 48.05
SRI 90.01

DECORATIVE



HPA High Polished Aluminum
5 Year Finish Warranty
3-HPA-70
LRV 0.88

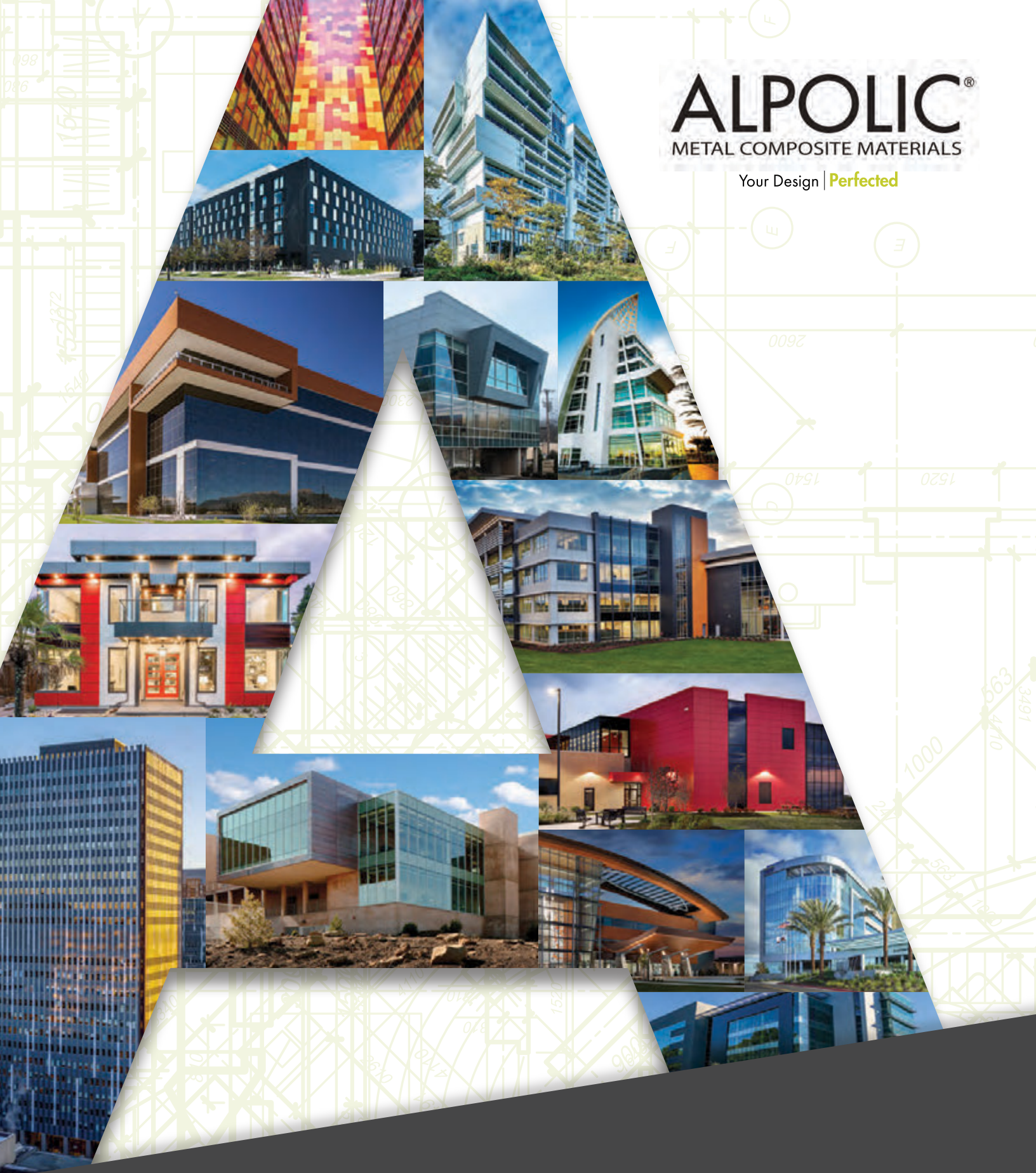
Order samples at www.alpolic-america.com/samples

*Colors shown are as close to actual colors as allowed by the printing process. Mitsubishi Chemical America, Inc. reserves the right to change or delete information herein without prior notice. Please refer to warranty details for exclusions and limitations. Additional warranty coverage may be given to some projects/products. Please call 800.422.7270 for more information.

ALPOLIC[®]

METAL COMPOSITE MATERIALS

Your Design | **Perfected**



STOCK **COLOR** CHART

Exceptional projects demand exceptional materials.

For over 50 years, ALPOLIC® has delivered premium metal composite materials that are durable, sustainable and truly remarkable.

There is only one choice for metal composite materials. That's ALPOLIC®. We offer an extensive selection of rich, vibrant colors and styles for both painted and natural metal surfaces, working with you to realize your designs. Our rigid, lightweight panels are backed by some of the industry's most comprehensive warranties, ensuring your vision lasts—that's the beauty of ALPOLIC® materials.

Choose ALPOLIC® and bring your vision to life!

STOCK colors are a popular choice available in a selection of widths and lengths for immediate shipment. Specify a polyethylene (PE) or fire-resistant (fr) core – required by fire codes when building over 40 feet.

ANODIZED panels are manufactured with 1100 alloy aluminum. They are available in both 50- and 62-inch widths with a stock clear anodized Class 1 finish or a choice of six custom Class 1 colors.

NATURAL METALS are made light, affordable, with greater flatness and workability. State-of-the-art composite panels in copper, zinc, stainless steel or titanium.

PATTERN SERIES finishes are produced using our proprietary image-transfer process, providing the classic beauty of timber and other natural inspirations.

EFFECTS SERIES captivate with specialized pigments to create unique colors and effects. Shimmer, Pearlescent and Prismatic finishes can make the surface glisten or even change colors with different lighting or the movement of the sun.

MATTE SERIES finishes offer warmly muted colors that evoke the serenity of the natural world. With gloss rates at 6, these subdued panels offer a calming compliment to the brilliant colors and glosses ALPOLIC® materials are famous for.

CORPORATE IDENTITY | PROGRAM can be custom created for your unique brand. For a consistent look of quality across all your corporate architecture.

DECORATIVE panels are specially treated anodized aluminum finishes polished to a high luster.

MICA finishes catch and reflect light in a dynamic way that can vary from muted to brilliant depending on the brightness of the light and the angle of the viewer.

METALLIC finishes bring the look of silver, pewter, gold, steel, bronze, copper and other metals to our versatile aluminum composite panels.

MULTI-COLOR panels incorporate an advanced coating process engineered by ALPOLIC®. A perfect option for branding, this crisp execution is only accomplished with our advanced die coil coating system.

CUSTOM COLORS ALPOLIC® offers bright, high-gloss colors, rich metallics, low-gloss earth tones, prismatic special effects and more. Imagine any color and we'll try to match it. Contact customer service to connect with our color experts.

With ALPOLIC®, beauty is more than skin deep. As a leading manufacturer of metal composite materials, we create products that maintain their magnificent finishes for years. We source only the best materials and take into consideration every detail of our manufacturing process. Since beginning production in the United States, we've focused on quality, sustainability and customer service.

Choose the Highest Standard of Quality, Durability and Beauty

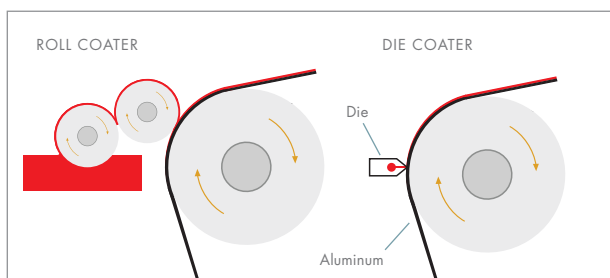
HIGH-PERFORMANCE FLUOROPOLYMER RESINS –

Our Lumiflon® FEVE and Kynar® PVDF resins are the most advanced architectural coatings available, meeting or exceeding AAMA 2605 specifications to deliver superior durability, weatherability and chemical resistance. Choose Lumiflon® FEVE for the broadest color palette with a gloss range from matte to high luster.

SHORT RUN CAPABILITIES – With our advanced die coating process and controlled curing, we can coil coat as little as 1,000 square feet of material in a broad choice of custom colors. You can count on the same color consistency, quality and lengthy warranty we offer for the largest orders in your choice of 40-, 50- or 62-inch widths.

GLOSS RANGE – Different gloss levels can significantly change the eye’s perception of color. If you would like a different gloss level than the sample you submit for color matching, let us know. We will work with you directly to ensure the gloss level you want is achieved.

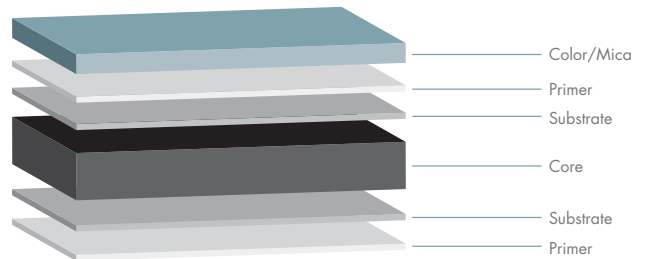
FINISH DIRECTIONALITY – For best color consistency, maintain the same directionality throughout design, estimation, fabrication and construction. We recommend ordering finishes for your entire job at one time, from one lot of material.



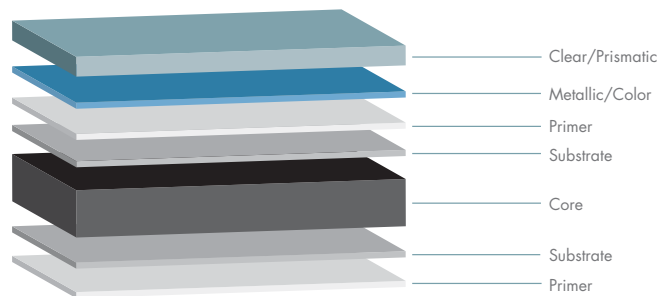
DIE COATING VS. ROLL COATING

Although widely used roll coaters can achieve adequate quality and efficiency, our advanced die coaters permit direct coating on the aluminum surface to ensure smoother, finer finishes without roping marks.

2 Coat Solid/Mica



3 Coat Metallic/Prismatic



LIGHT REFLECTANCE VALUE – LRV numbers indicate the percentage of visible light reflected by the surface. This value is defined in ASTM C609 as the Y value in an XYZ/Yxy color space. While the LRV values shown on this chart are typical, there can be slight variations between individual lots.

SOLAR REFLECTANCE INDEX – SRI numbers, as defined by ASTM E1980 using 12 W/m²K values, indicate the material’s reflectivity (how well it reflects back instead of absorbing radiant energy) and emissivity (how well it radiates absorbed heat back into the environment). The Cool Roof Rating Council (CRRC) requires an SRI value of 29 or greater for steep-slope roofs to earn a “Cool” rating. Most of our Architectural stock colors meet this requirement, and we have added “Cool” after the SRI value for easy reference.

For expert assistance with product availability, material selection, sizing and colors, please contact your local ALPOLIC® sales manager.



Lumiflon® FEVE, a remarkable second-generation fluoropolymer coating, meets the weatherability and chemical-resistance standards you would expect from PVDF finishes, but delivers unprecedented design and performance advantages – a rich palette of vivid colors, a full gloss range and a stronger finish.

	FEVE/Lumiflon®	PVDF/Kynar®
Durability	Meets AAMA 2605	Meets AAMA 2605
Color Range	Bright to Muted	Muted Only
Color Retention	Excellent	Excellent
Gloss Range	10–70	10–40
Gloss Retention	Excellent	Excellent
Chalking Resistance	Excellent	Excellent
Marring Resistance	Excellent	Good

For additional information, samples or a list of ALPOLIC® fabricators, please call 1-800-422-7270 or visit www.alpolic-americas.com.

Why ALPOLIC®?

- We stand behind our products with the strongest *in situ* warranty
- We offer the largest selection of stocked colors in the widest gloss range
- We offer exceptional service and support with a full technical staff to answer your questions

There are many manufacturers of metal composite materials, but there is only one ALPOLIC®.

ALPOLIC®

METAL COMPOSITE MATERIALS

401 Volvo Parkway, Chesapeake, VA 23320
Telephone: 800-422-7270 | Fax: 757-436-1896
www.alpolic-americas.com | e-mail: info@alpolic.com

Mitsubishi Chemical America, Inc. reserves the right to change or delete information herein without prior notice.

©2021 Mitsubishi Chemical America. All rights reserved. ALPOLIC® is a registered trademark of Mitsubishi Chemical Corporation. Lumiflon® is a registered trademark of Asahi Glass Company. Kynar® is a registered trademark of Arkema, Inc.

