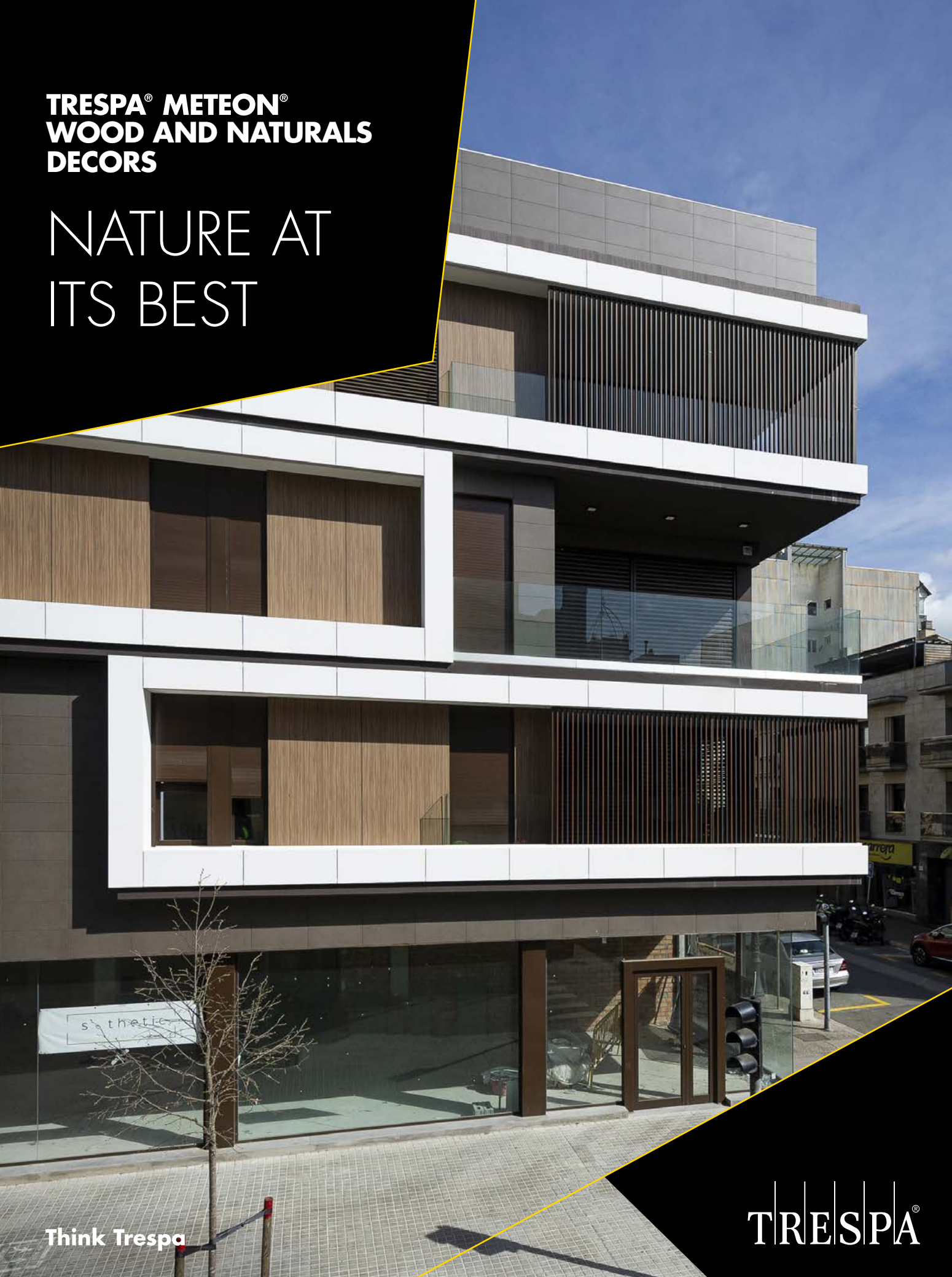


**TRESPA® METEON®
WOOD AND NATURALS
DECORS**

NATURE AT
ITS BEST

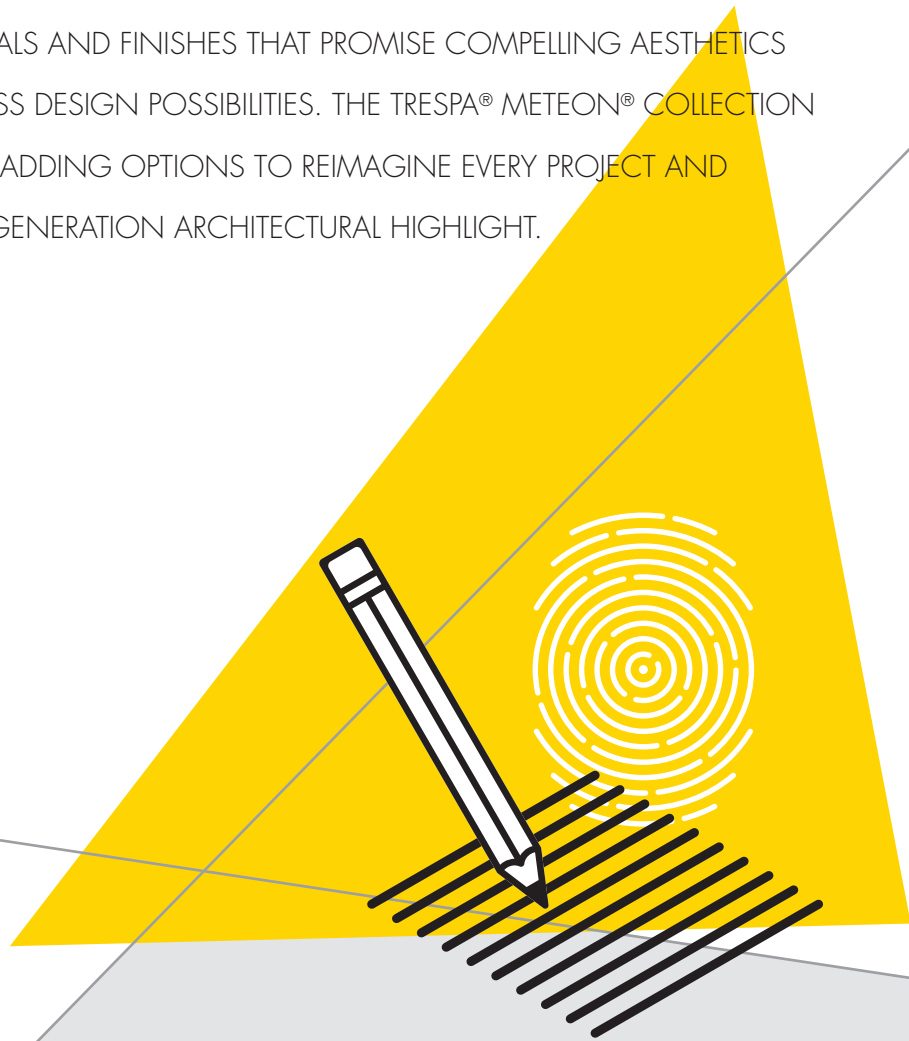


Think Trespa

TRESPA®

WHERE COMPELLING AESTHETICS AND LIMITLESS DESIGN POSSIBILITIES MEET

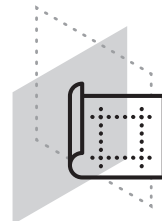
DISCOVER AN ENORMOUS RANGE OF DESIGNS. UNIQUE PATTERNS. RHYTHMS AND DEPTHS. AND ENDLESS, LONG-LASTING COLORS. ALL BROUGHT TOGETHER IN HIGH-END MATERIALS AND FINISHES THAT PROMISE COMPELLING AESTHETICS AND ALMOST LIMITLESS DESIGN POSSIBILITIES. THE TRESPA® METEON® COLLECTION OFFERS HIGH-END CLADDING OPTIONS TO REIMAGINE EVERY PROJECT AND DESIGN YOUR NEXT-GENERATION ARCHITECTURAL HIGHLIGHT.



Create perfect one-of-a-kind effects. Or simply look for other value-adding options to determine a distinctive look and underline the qualities of a building. All according to your vision and ideas. It's now possible, with Trespa® Meteon®.

EVERYTHING YOU WANT

This stunning collection features cladding panels for innovative and functional ventilated façade systems, balconies, and sunblind solutions. Available in a broad range of looks, such as Metallics, Lumen, Focus, Naturals and Woods. You even can pick different colors and finishes. Allowing you to realize almost everything you want, exactly in the way you want.



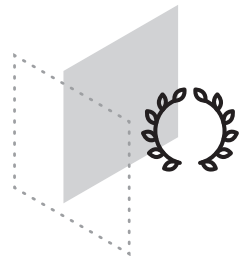
LONG-LASTING ENJOYMENT

The entire collection is highly weather resistant, so sun and rain will have no significant effect on a panel's surface. They're also easy to clean and highly scratch and impact resistant. And they all come with a 10-year limited warranty.



HIGH-END QUALITY

Trespa® Meteon® is a decorative high-pressure compact laminate (HPL) with an integral surface manufactured using Trespa's unique in-house technology: Electron Beam Curing (EBC). The blend of up to 70% natural fibers and thermosetting resins, manufactured under high pressures and temperatures, yields a highly stable, dense panel with good strength-to-weight ratio.





METEON® WOOD

NATURE AT ITS BEST

Wood structures that tell a story. Tones that either breathe more warmth or convey coolness. And endless possibilities that bring natural textures (or finishes) to life. The Trespa® Meteon® Wood collection is nature at its best. Providing you with wood looks that are indistinguishable from the real thing, this collection brings your wood ideas perfectly to life. From fresh contemporary designs to classic weathered looks – the distinctive designs make it possible to make details more eye-catching and façades even more standout.

With the Trespa® Meteon® Wood collection, you can unleash your ideas in new ways, while creating tomorrow's wood-inspired designs. For a timeless appearance.



DISCOVER THE TRESPA® METEON® WOOD COLLECTION AND REIMAGINE YOUR NEXT PROJECT



FINISHES



TRESPA® METEON® WOOD AND NATURALS DECORS
A WINNING COMBINATION



SKATING CLUB OF BOSTON

ARCHITECT	STUDIO TROIKA
MARKET SEGMENT	LEISURE, CULTURAL, SPORTS
BUILD TYPE	NEW CONSTRUCTION
USE	FAÇADES
CONSTRUCTION YR.	2020



DISCOVER THE PROJECT

NW02
ELEGANT OAK

METEON® NATURALS

COLORS OF NATURE

Corroded green. Verdigris tones. Weathered basalt. Materials affected by natural influences will change patterns, while different colors can appear. The Trespa® Meteon® Naturals collection is inspired by natural appearances and processes, allowing you to work and design with the true colors of nature.

The Trespa® Meteon® Naturals collection brings natural colors and structures to life. For a robust and worn natural look or to create an organic look and feel. The result is a unique collection that comes in many decors and finishes. Providing you with endless possibilities to combine them with other materials and play with the elements of nature.



DISCOVER THE TRESPA® METEON® NATURALS COLLECTION AND REIMAGINE YOUR NEXT PROJECT



NA14
WEATHERED
BASALT

NA15
INDIAN TERRA
COTTA

NA12
NATURAL
CHALKSTONE

NA16
BELGIAN
BLUESTONE

NA13
SILVER QUARTZITE

NA18
NATURAL SLATE

NA19
ITALIAN SLATE

NA17
NATURAL
GRAPHITE

NM03
CORRODED
GREEN

NM08
CRAFTED WHITE

NM02
FORGED ALLOY

NM05
HARDENED
BROWN

NM06
TEMPERED GREY

NM01
RUSTED BROWN

NM07
CASTED GREY

NM04
SINTERED ALLOY

FINISHES



WEST CHICAGO HIGH SCHOOL

TRESPA® METEON®
MODERNIZES
1920s CHICAGO
HIGH SCHOOL

TRESPA® METEON® WOOD AND NATURALS DECORS
MODERNIZES 1920s CHICAGO HIGH SCHOOL



WEST CHICAGO HIGH SCHOOL

ARCHITECT DLA ARCHITECTS
MARKET SEGMENT EDUCATION
BUILD TYPE RENOVATION
USE FAÇADES
CONSTRUCTION YR. 2020



DISCOVER THE PROJECT



NA14
WEATHERED BASALT



NA14
WEATHERED BASALT

TRESPA® METEON® WOOD AND NATURALS DECORS

OUR DELIVERY PROGRAM

WOOD

Color code	Color name	Satin				Matte			
		■	■	■	■	■	■	■	■
NW02	Elegant Oak	■	■	■	■	■	■	■	■
NW03	Harmony Oak	■	■	■	■	■	■	■	■
NW04	Pacific Board	■	■	■	■	■	■	■	■
NW05	Loft Brown	■	■	■	■	■	■	■	■
NW06	Montreux Amber	■	■	■	■	■	■	■	■
NW07	Montreux Sunglow	■	■	■	■	■	■	■	■
NW08	Italian Walnut	■	■	■	■	■	■	■	■
NW09	Wenge	■	■	■	■	■	■	■	■
NW10	English Cherry	■	■	■	■	■	■	■	■
NW11	Santos Palisander	■	■	■	■	■	■	■	■
NW12	Natural Bagenda	■	■	■	■	■	■	■	■
NW13	Country Wood	■	■	■	■	■	■	■	■
NW14	French Walnut	■	■	■	■	■	■	■	■
NW15	Milano Sabbia	■	■	■	■	■	■	■	■
NW16	Milano Terra	■	■	■	■	■	■	■	■
NW17	Milano Grigio	■	■	■	■	■	■	■	■
NW18	Light Mahogany	■	■	■	■	■	■	■	■
NW19	Dark Mahogany	■	■	■	■	■	■	■	■
NW22	Slate Wood	■	■	■	■	■	■	■	■
NW23	Nordic Black	■	■	■	■	■	■	■	■
NW24	Greyed Cedar	■	■	■	■	■	■	■	■
NW25	Hesbania	■	■	■	■	■	■	■	■
NW26	Core Ash	■	■	■	■	■	■	■	■
NW27	Denver Oak	■	■	■	■	■	■	■	■
NW28	Halmstad	■	■	■	■	■	■	■	■
NW29	Woodstone	■	■	■	■	■	■	■	■
NW30	Tropical Ipe	■	■	■	■	■	■	■	■
NW31	Western Red Cedar	■	■	■	■	■	■	■	■

TRESPA® METEON® WOOD DECORS PANELS FEATURE A DIRECTIONAL COLORED SURFACE. THE GRAIN OF TRESPA® METEON® WOOD DECORS RUNS THE LENGTH DIRECTION OF THE PANEL.

NATURALS

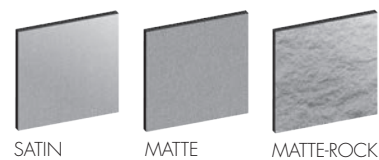
Color code	Color name	Matte				Matte-Rock*	
		■	■	■	■	■	■
NA12	Natural Chalkstone	■	■	■	■	■	■
NA13	Silver Quartzite	■	■	■	■	■	■
NA14	Weathered Basalt	■	■	■	■	■	■
NA15	Indian Terra Cotta	■	■	■	■	■	■
NA16	Belgian Bluestone	■	■	■	■	■	■
NA17	Natural Graphite	■	■	■	■	■	■
NA18	Natural Slate	■	■	■	■	■	■
NA19	Italian Slate	■	■	■	■	■	■
With metallic effect							
NM01	Rusted Brown	■	■	■	■	■	■
NM02**	Forged Alloy	■	■	■	■	■	■
NM03	Corroded Green	■	■	■	■	■	■
NM04**	Sintered Alloy	■	■	■	■	■	■
NM05**	Hardened Brown	■	■	■	■	■	■
NM06**	Tempered Grey	■	■	■	■	■	■
NM07**	Casted Grey	■	■	■	■	■	■
NM08**	Crafted White	■	■	■	■	■	■

TRESPA® METEON® NATURALS PANELS FEATURE A DIRECTIONAL COLORED SURFACE.

* WITH SATIN REVERSE.

** DECORS HAVE GLOSS ELEMENTS IN THE SURFACE.

FINISHES



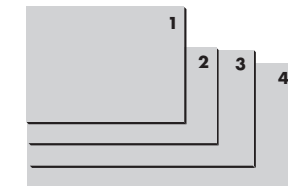
FOR TECHNICAL INFORMATION, PLEASE VISIT WWW.TRESPA.INFO



TYPES

- **SINGLE SIDED DECORATIVE** DECORATIVE SIDE WITH NON DECORATIVE BLACK REVERSE
- **DOUBLE SIDED DECORATIVE** SAME COLOR FOR FRONT AND REVERSE SIDE OF THE PANEL
- **VARITOP** DECORATIVE SIDE WITH STANDARD WHITE DECORATIVE SATIN REVERSE (A03.0.0)
- **DUOCOLOR** DIFFERENT COLOR FOR FRONT AND REVERSE SIDE OF THE PANEL

SIZES



1 ≈ 6 x 8 ft (1860 x 2550 mm)

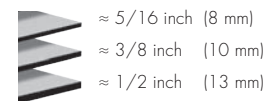
2 ≈ 5 x 10 ft (1530 x 3050 mm)

3 ≈ 6 x 12 ft (1860 x 3650 mm)

4 ≈ 7 x 14 ft (2130 x 4270 mm)*

*THE LARGE SIZE OF THIS PANEL ALLOWS AN EFFICIENT MACHINING OF THE PRODUCT.

THICKNESSES



≈ 5/16 inch (8 mm)

≈ 3/8 inch (10 mm)

≈ 1/2 inch (13 mm)

NOTE

FOR AVAILABLE SHEET SIZES, THICKNESSES AND FINISHES IN YOUR COUNTRY, PLEASE CHECK TRESPA.INFO FOR THE DETAILED AND UP TO DATE DELIVERY PROGRAM AND MATERIAL PROPERTY DATASHEET. ALTERNATIVELY YOU CAN USE THE PRODUCT SELECTOR ON TRESPA.COM (AFTER CHOOSING THE COUNTRY WHERE THE PROJECT IS LOCATED).

ORDER YOUR FREE WOOD SAMPLE



ORDER YOUR FREE NATURALS SAMPLE



CONTACT US

TRESPA INTERNATIONAL B.V.

P.O. Box 110, 6000 AC Weert
Wetering 20, 6002 SM Weert
The Netherlands
www.trespa.com

TRESPA NORTH AMERICA LTD.

350 Fifth Avenue, Ste 4610
New York NY 10118
United States
1-800-487-3772
Info.NorthAmerica@Trespa.com

VISIT US

TRESPA DESIGN CENTER WEERT

Wetering 20
6002 SM Weert
The Netherlands
Tel: +31 (0) 495 458 845
TDC.Weert@Trespa.com
www.trespa.com/tdc

TRESPA DESIGN CENTER BARCELONA

Calle Ribera 5,
08003 Barcelona
Spain
Tel: +34 (0) 93 295 4193
TDC.Barcelona@Trespa.com
www.trespa.com/tdc

TRESPA DESIGN CENTER SANTIAGO

Eliodoro Yáñez 2831
Torre A - Local 1
Providencia, Santiago
Chile
Tel: +56 2 24069990
TDC.Santiago@Trespa.com
www.trespa.com/tdc

FOLLOW US



DISCLAIMER

GENERAL

These terms apply to the use of this document and such use automatically means that the other party agrees to these terms. The information provided by Trespa International B.V. ("Trespa") in this document is solely indicative. Trespa is unable to warrant the accuracy and completeness of this information. Trespa may change the information included in this document at any time and without further notice. Trespa's customers and third parties must ascertain that they have the most recent document (for the most recent version, please consult: www.trespa.com). No rights can be derived from the information provided; the use of the information is at the other party's risk and responsibility. Trespa does not warrant that the information in this document is suitable for the purpose for which it is consulted by the other party. This document does not contain any design, structural calculation, estimate or other warranty or representation that customers and third parties may rely on. This document does not guarantee any properties of Trespa products. Colors used in Trespa's communications (including but not limited to printed matter) and in samples of Trespa's products may differ from the colors of the Trespa products to be supplied. Samples are not intended for use in product tests and are not representative of characteristics of the Trespa

products. Trespa's products and samples are produced within the specified color tolerances and the colors (of production batches) may differ, even if the same color is used. The viewing angle also influences the color perception. Metallic panels feature a surface whose color appears to change based on the direction from which it is viewed. The specified color stability and color specifications relate only to the decorative surface of the Trespa products, not to the core material and samples of the Trespa products. Trespa products are delivered ex-works with straight, sawn sides. Customers and third parties must have a professional adviser inform them about (the suitability of) the Trespa products for all desired applications and about applicable laws and regulations. Trespa does not warrant the above. The most recent version of the current delivery programme and the Material Properties Datasheet can be found at www.trespa.info. Only the information in the most recent and valid Material Property Datasheet should be used to select and provide advice regarding Trespa products. Trespa reserves the right to change (the specifications for) its products without prior notice.

LIABILITY

Trespa is not liable (neither contractual nor non-contractual) for any damage arising from or

related to the use of this document, except if and to the extent that such damage is the result of wilful misconduct or gross negligence on the part of Trespa and/or its management. The limitation of liability applies to all parties affiliated with Trespa, including but not limited to its officers, directors, employees, affiliated enterprises, suppliers, distributors, agents, and representatives.

GENERAL CONDITIONS

All oral and written statements, offers, quotations, sales, supplies, deliveries and/or agreements and all related activities of Trespa are governed by the Trespa General Terms and Conditions of Sale (*Algemene verkoopvoorwaarden Trespa International B.V.*) filed with the Chamber of Commerce and Industry for Noord- en Midden-Limburg in Venlo (NL) on February 20th, 2015 under number 24270677, which can be found on and downloaded from the Trespa website, www.trespa.com/documentation. All oral and written statements, offers, quotations, sales, supplies, deliveries and/or agreements and all related work of Trespa North America, Ltd. are governed by the Trespa North America General Terms and Conditions of Sale, which can be found on and downloaded from the Trespa website, www.trespa.com/documentation. A copy of these general conditions of sale will be provided free of

charge on request. All general terms and conditions other than the conditions mentioned above are dismissed and do not apply, regardless of whether such terms and conditions are referred to on requests for offers, offer confirmations, stationery and/or other documents of the other party, even if Trespa does not expressly object to such terms and conditions.

INTELLECTUAL PROPERTY

All intellectual property rights and other rights regarding the content of this document (including logos, text and photographs) are owned by Trespa and/or its licensors. Any use of the content of this document, including distribution, reproduction, disclosure, storage in an automated data file or the dispatch of such a file without Trespa's prior written consent is explicitly prohibited. * Trespa, Meteon, Athlon, TopLab, TopLab^{PLUS}, TopLab^{PLUSALIGN}, TopLab^{ECO-FIBRE}, TopLab^{VERTICAL}, TopLab^{BASE}, Virtuon, Izeon, Pura, Pura NFC, Volkern, Trespa Essentials and Mystic Metallics are registered trademarks of Trespa.

QUESTIONS

Should you have any questions or comments, please do not hesitate to contact Trespa.



EN-US2427-432623 ■ VERSION 2.0
BROCHURE CODE ENUS2427 ■ DATE 10-2022

VISIT TRESPA.COM FOR THE MOST
UP TO DATE VERSION OF THIS DOCUMENT.

TRESPA®