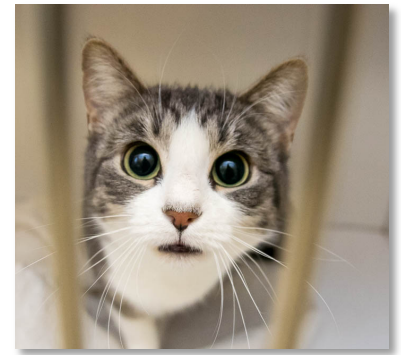




*Mia, adopted in 2021,
is one of the
1000+ animals whose lives
SAS transforms each year.*



**Imagine looking into the eyes of a suffering animal,
and knowing that you can help. We do that every day.
Become our *partner* and share that feeling.**

Dear Friend,

Each year, SAS helps an estimated 1,000+ pets, including finding homes for hundreds via our shelter. In fact, our careful matchmaking process enabled us to **adopt 493 homeless animals** to happy families in 2023, the highest number we've helped in over four years. Over **30% of our pets are senior or special needs**, and we've developed a local reputation for our "**seniors to seniors**" program, where we successfully pair senior pets with senior adopters. In keeping with our commitment to help pets and the people who love them, our compassion always extends to the people who must surrender pets to us, whom we are proud to treat with respect and understanding.

In our 30-plus years, we've also demonstrated a deep commitment to preventing animals from ending up in shelters in the first place. Our HELP program offers community-based assistance to those facing need, including **low-cost spay/neuter and veterinary services**. Our **Community Cupboard at SAS** is a no-questions-asked pet food pantry that donates over **50,000 lbs of pet food** and supplies to underserved community members each year. Grant funding enables us to humanely help our region's **feral cats**, and our robust volunteer program, including our newly launched youth program, is over 300 volunteers strong, allowing us to do all of this vital work with a relatively small paid staff.

Our initiatives have made a world of difference to our community, and they are why we are considered the region's most important resource for animals. Our **Corporate Partner** program is your chance to be a part of this work, and to make a positive impact alongside with us. This program offers opportunities for your firm to get involved in this rewarding work. It welcomes you into our family, where you will benefit from the demonstrated good will of our huge network of adopters, volunteers and supporters.

We encourage you to review the attached partner benefits and contact us to learn more. As a **Corporate Partner**, you will enjoy heightened visibility, an enhanced charitable image, excellent tax benefits and a positive affiliation with a high-profile community cause. Most importantly, you will know the feeling of looking into a suffering animal's eyes and being able to help. We will be contacting you to follow up on this opportunity, and we encourage you to reach out if you have questions.

Sincerely,

Maryann Regan

Maryann Regan
Executive Director