

# PortaBell Setup

## Step #1

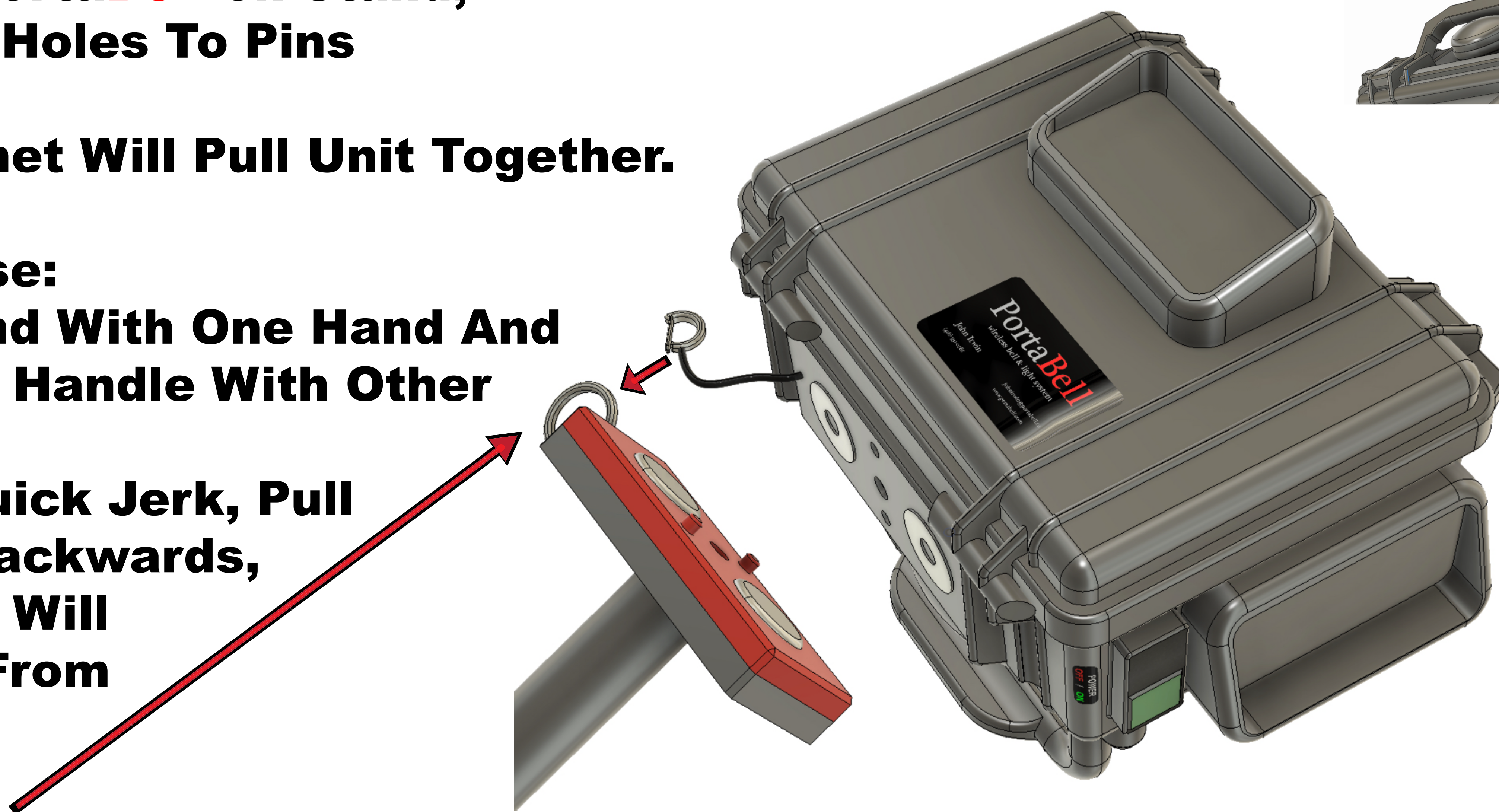
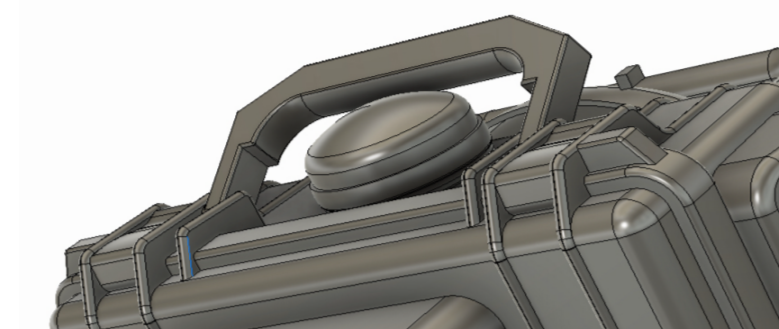
Placing PortaBell on Stand,  
Align Pin Holes To Pins

The Magnet Will Pull Unit Together.

To Release:  
Hold Stand With One Hand And  
PortaBell Handle With Other

With A Quick Jerk, Pull  
Handle Backwards,  
PortaBell Will  
Release From  
Stand

Handle

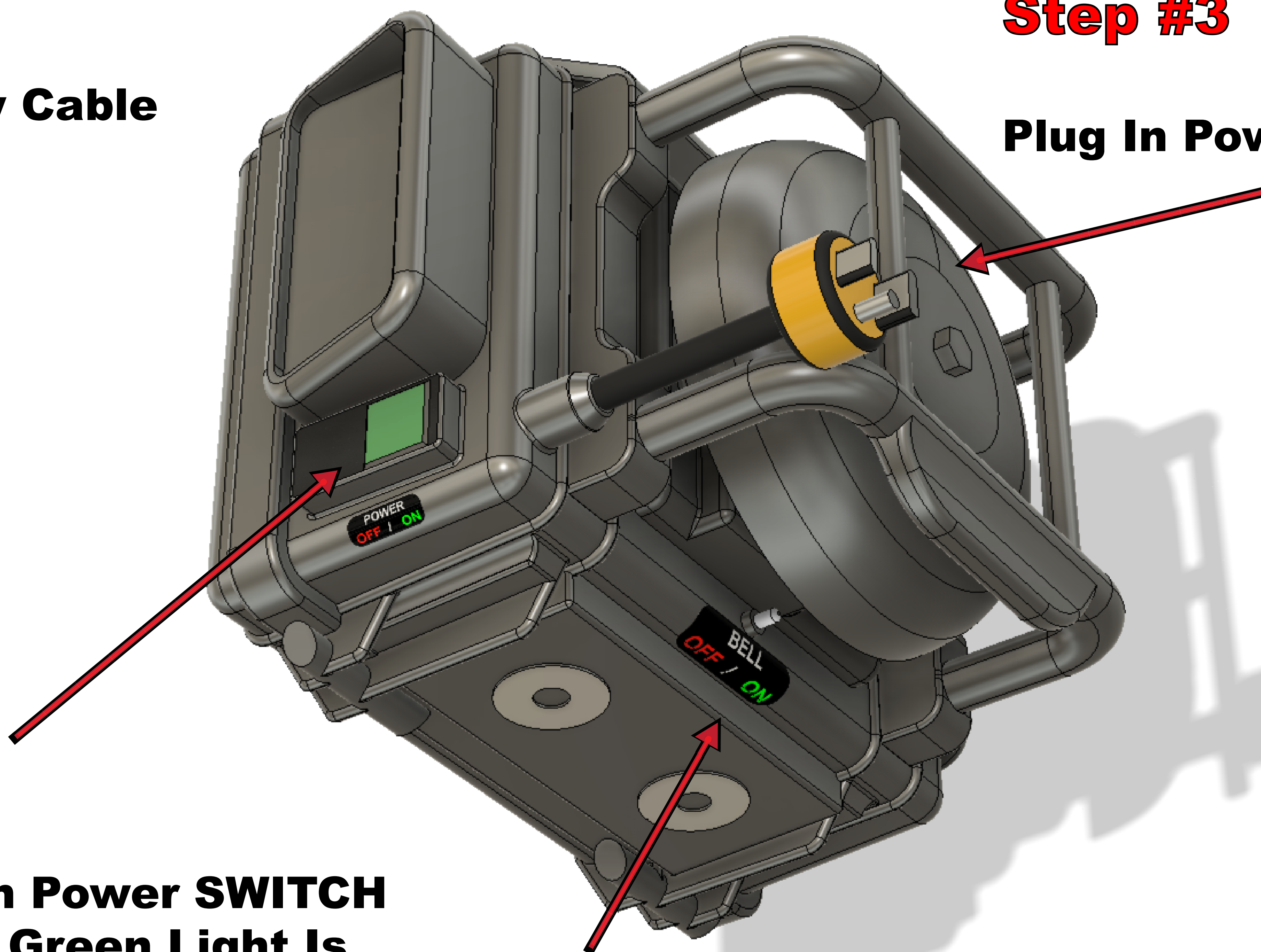


## Step #2

Attach Safety Cable  
To Stand

## Step #3

Plug In Power Cord



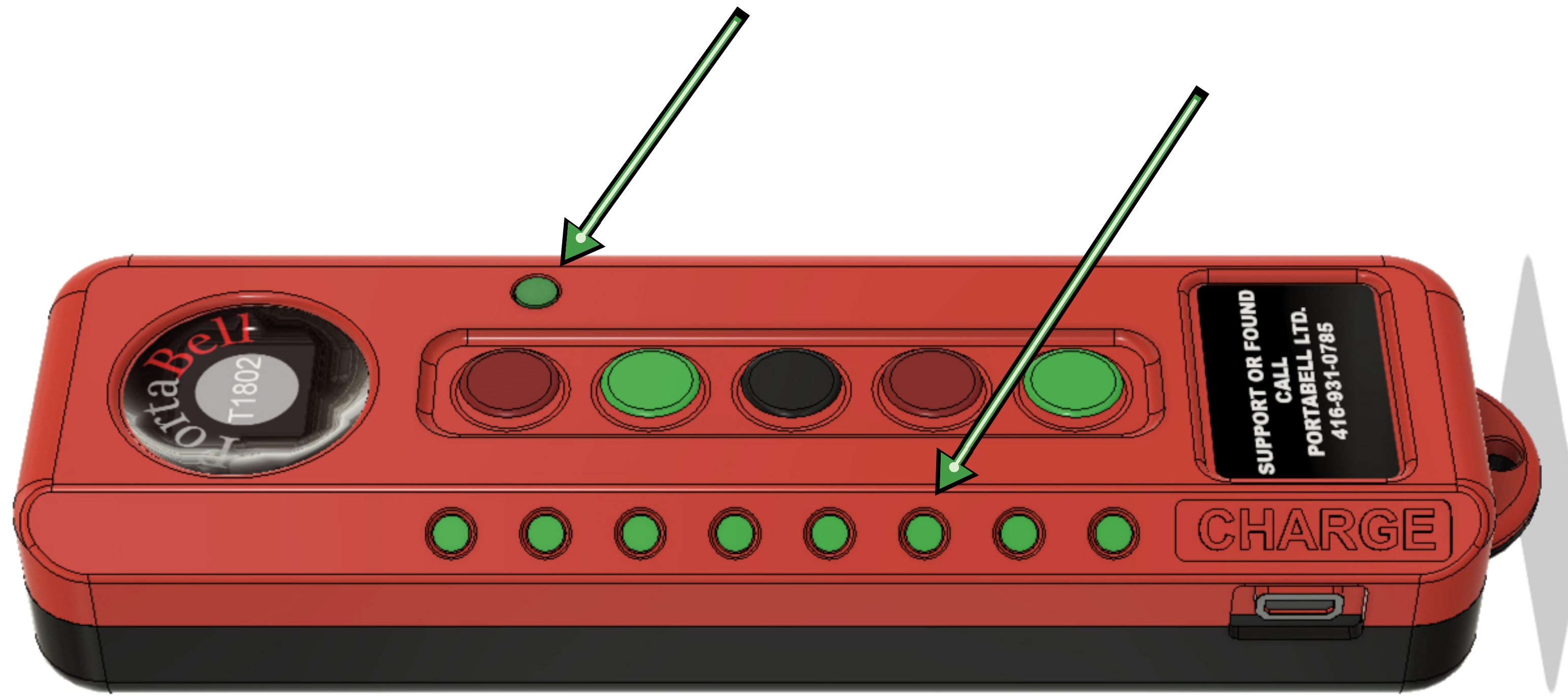
## Step #4

Turn On Main Power SWITCH  
And Confirm Green Light Is  
Glowing Green

## Step #5

Toggle Bell Disconnect SWITCH  
To On Position,  
Left Off / Right On

**When Powering On Transceiver, The Battery LED and 8 LEDs Down The Side Will Turn On Briefly, Assuming The Battery Is Not Dead**



**ALSO**

**The Transceiver Will Vibrate Twice, This Is A Test Of Units Components. After 7 Seconds The Test Is Finished.**

**If Longer Than 10 Seconds, The Unit Is Defective.**

**Step #6**

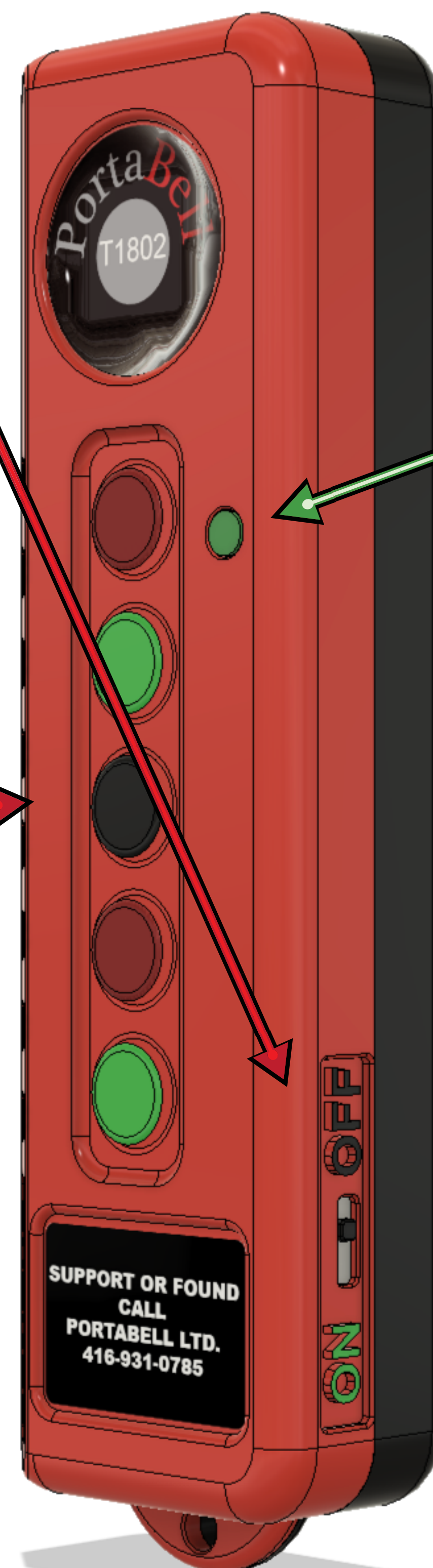
**The Transceiver**

**Gently Slide Power SWITCH To ON Position.**

**“If Already In ON Position, Slide To OFF, Then Slide Back To On”.**

**Step #7**

**Press The Black Button Briefly To Confirm Battery Level Of Transceiver.**



**Green (Good)**  
**Yellow (Fair)**  
**Red (Poor)**

**No Light, Battery Dead**

## **Test PortaBell With Transceiver**

### **Rolling & Cut Commands With Bell**

#### **Rolling With Bell Button**

**Press Once Briefly, To Activate All PortaBells To Ring Their Bell Once And turn On Their Flashing Lights.**

**The Transceiver Will Vibrate Once And Flash Battery Level LED **Red****

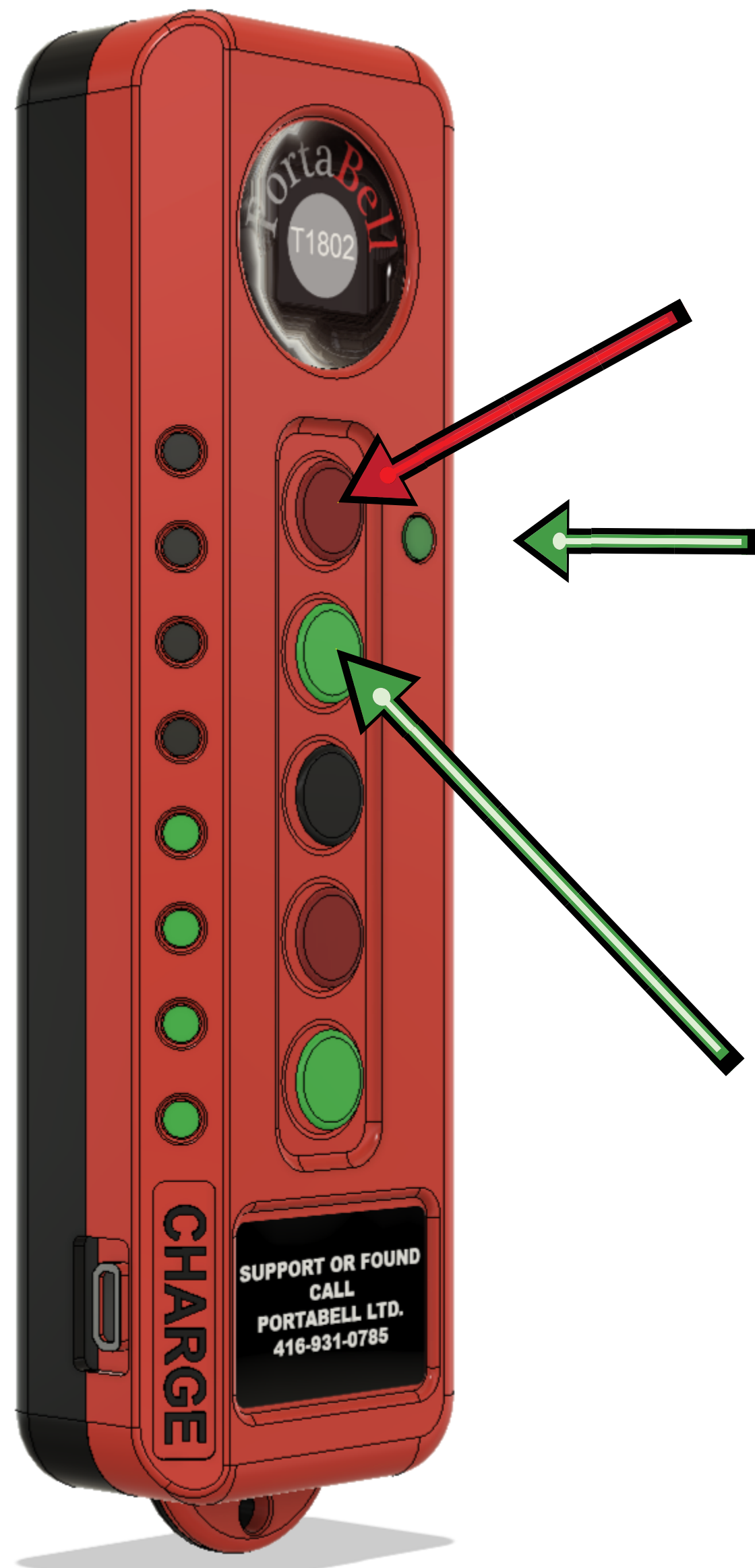
**Signalling It Has Sent The Comand Rolling **With Bell**.**

#### **Cut With Bell Button**

**Press Once Briefly, To Activate All PortaBells To Ring Their Bell Twice And Turn Off Their Flashing Lights.**

**The Transceiver will Vibrate Twice And Flash Battery Level LED **Green****

**Signalling It Has Sent The Comand Cut **With Bell****



### **PortaBell Responding**

**If The Transceiver Recives A Response From One Or More PortaBells The Transceiver Will Light Up 1 Or More Of The 8 LEDs Briefly.**

**Each Of The 8 LEDs Represents A PortaBell Responding That It Has Carried Out Your Command.**

**Otherwise, If The Transceiver Does Not Recive A Response, None Of the 8 LEDs will Light Up And The Transceiver Will Vibrate 3 Times.**

**This pic Represent 4 PortaBell Have Responded.**

**Step #9****Test PortaBell With Transceiver****Rolling & Cut Commands Without Bell****Rolling Without Bell Button**

**Press Once Briefly, To activate all PortaBells to turn On All Flashing Light Without Ringing Their Bell**

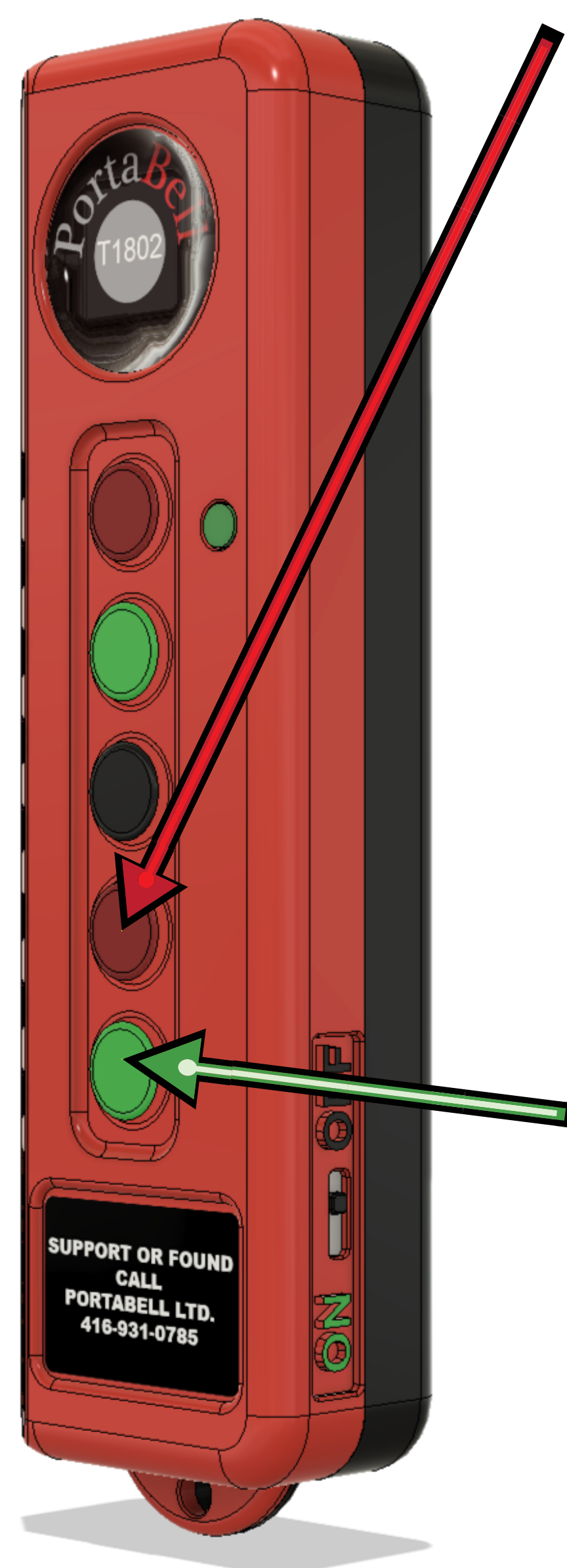
**The Transceiver Will Vibrate Once And Flash Battery Level LED Red**

**Signalling It Has Sent The Comand Rolling Without A Bell**

**Cut With No Bell Button**

**Press Once Briefly, To Activate All PortaBells To turn Off Their Flashing lights. Without Ringing Their Bell**

**The Transceiver Will Vibrate Twice And Flash Battery Level LED Green Signalling It Has Sent The Command Cut Without Bell**

**PortaBell Responding**

**If The Transceiver Recives A Response From One Or More PortaBells The Transceiver Will Light Up 1 Or More Of The 8 LEDs Briefly.**

**Each Of The 8 LEDs Represents A PortaBell Responding That It Has Carried Out Your Command.**

**Otherwise, If The Transceiver Does Not Recive A Response, None Of the 8 LEDs will Light Up And The Transceiver Will Vibrate 3 Times.**

**This pic Represent 4 PortaBell Have Responded.**

**NOTE**

**Network LED Will Be Red Before Test, And Turn Green After A Successful Test**

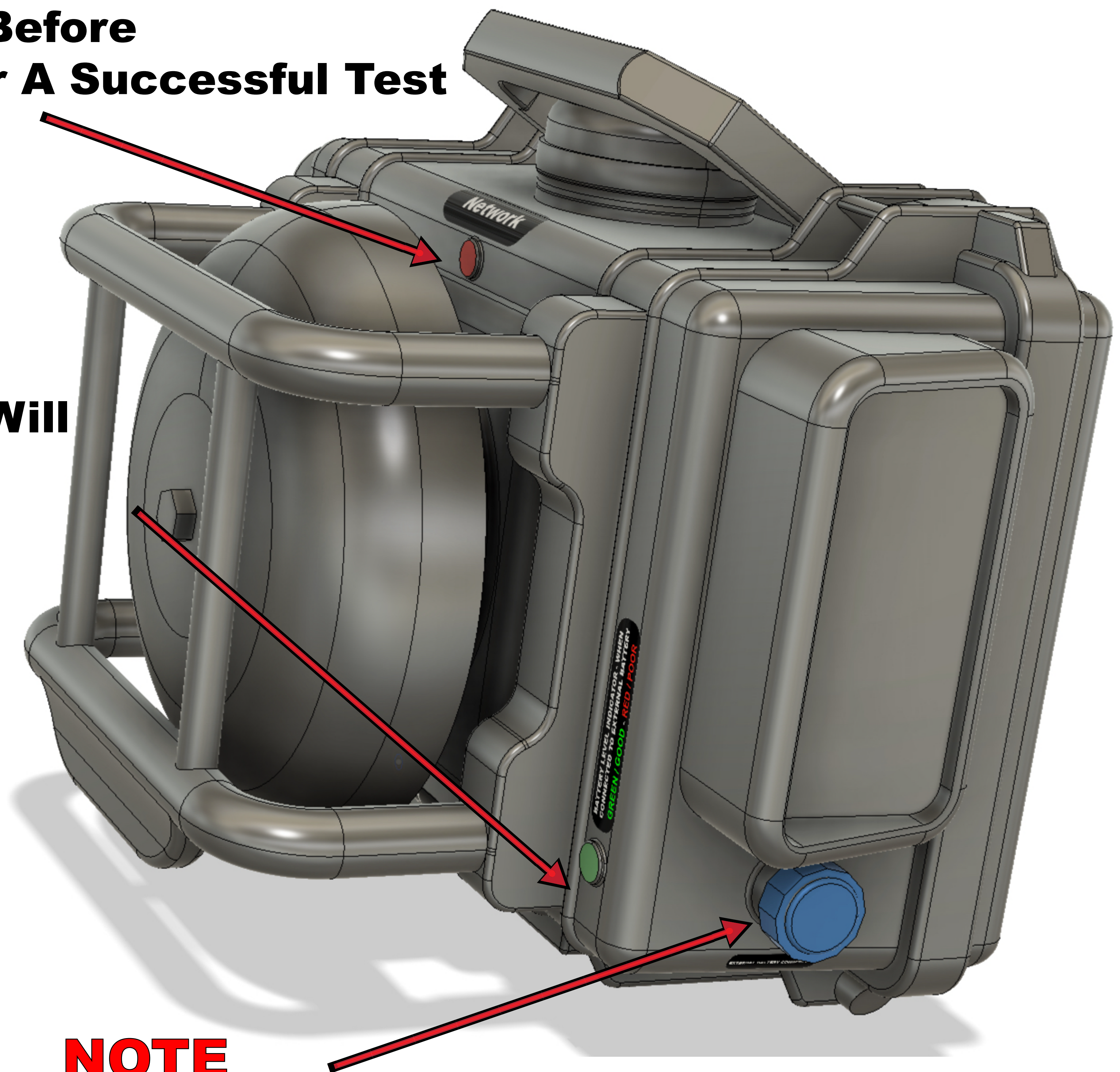
**NOTE**

**Battery Voltage Level LED Will Also Indicate Power Cord Voltage**

**Green (Good)**

**Yellow (Fair)**

**Red (Poor)**



**NOTE**

**Battery Pack Connection, PortaBells Can Also Operate On 12 Volts DC Battery Packs**

**NOTE**

**USB Micro Charger Transceiver Charge Time Is Approximate 3 Hours**

**Typical Run Time 3 Days**

**Transceiver Can Be Used While Charging**

