

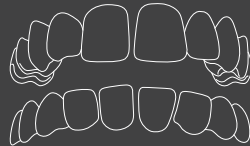
# The advantages of Invisalign® Treatment

- ✓ Invisalign clear aligners are removable, making it easier to brush and floss to maintain your oral health during treatment.
- ✓ Invisalign treatment may give you visible results from as early as the first month of treatment.
- ✓ Attend functions and events in confidence with Invisalign clear aligners. Virtually invisible, nobody would notice you're having your teeth straightened.
- ✓ Get straighter teeth more comfortably and predictably thanks to the innovative SmartForce and SmartTrack technologies in Invisalign aligners.
- ✓ Invisalign clear aligners are suitable even for an active lifestyle since there are no metal brackets cutting your mouth.
- ✓ With doctor visits only every 6-8 weeks, Invisalign clear aligners are ideal even for a hectic lifestyle, allowing you to spend more time doing the things that you love.
- ✓ Craving a snack? Since Invisalign clear aligners are easily removable, you have the freedom to eat, chew and drink whatever you like.

INVISALIGN, ITERO and CLINICHECK, among others, are trademarks and/or service marks of Align Technology, Inc. or one of its subsidiaries or affiliated companies and may be registered in the U.S. and/or other countries.

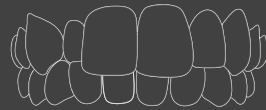
## Treatable cases

Invisalign clear aligners are clinically proven to treat cases from minor teeth straightening to moderate and severe malocclusions.



### Gapped Teeth

This occurs when there is considerable space between at least two of your teeth, and can cause gum problems.



### Crossbite

This can occur when the upper and lower jaws are both misaligned, and can cause wear and tear leading to bone loss.



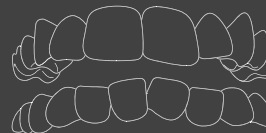
### Overbite

This occurs when the upper teeth bite over the lower teeth, and can lead to painful jaw irritation.



### Underbite

This occurs when the lower teeth protrude past the front teeth, preventing normal function of your front teeth or molars.



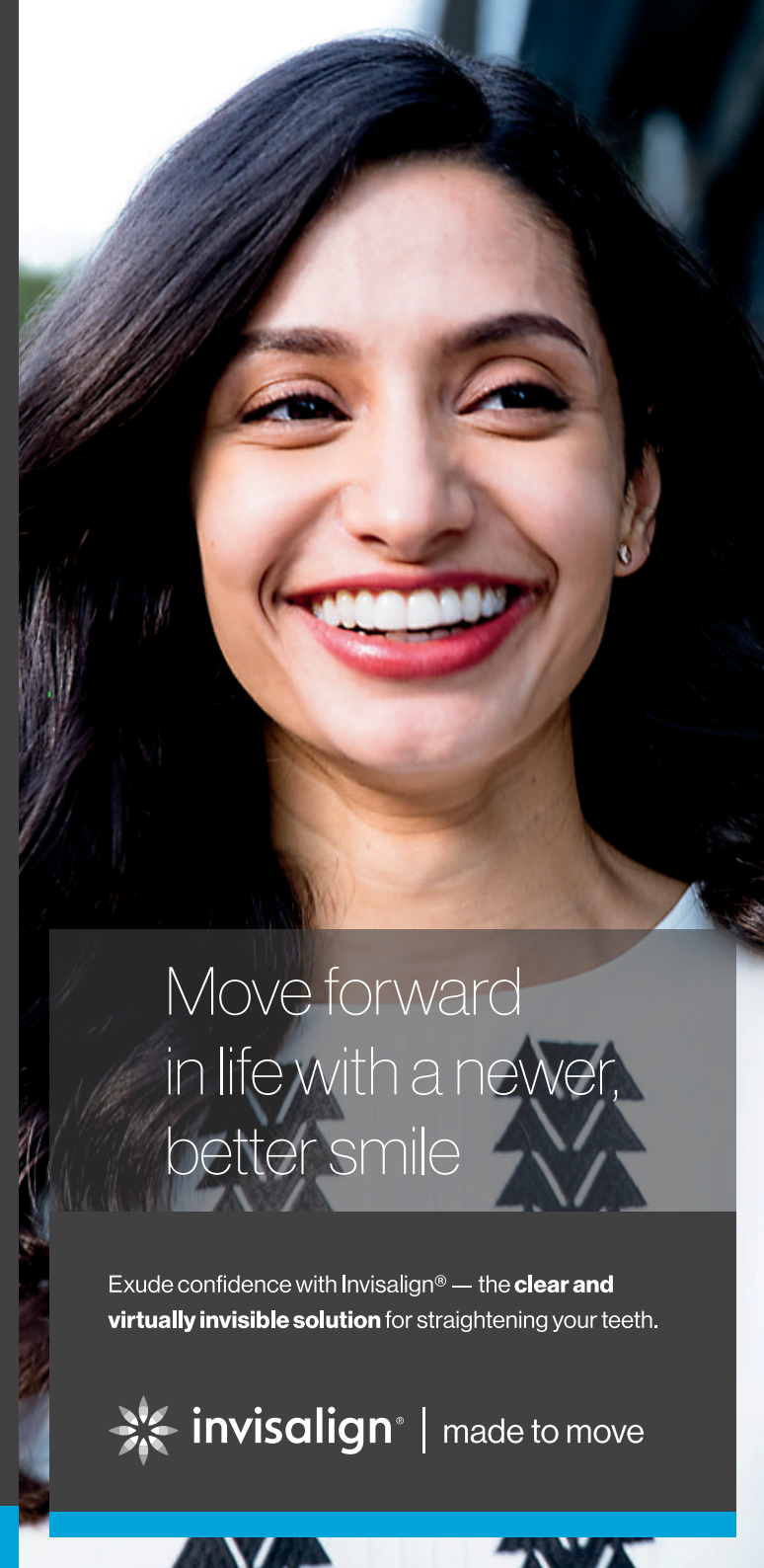
### Overcrowding

This occurs when there is simply a lack of room within your jaw for all your teeth to fit normally, leading to plaque accumulation.



### Openbite

This is when your upper and lower teeth are unable to make physical contact when the jaws are closed, making chewing and even talking difficult.



Move forward  
in life with a newer,  
better smile

Exude confidence with Invisalign® — the **clear and virtually invisible solution** for straightening your teeth.

 **invisalign®** | made to move

## What is Invisalign?

The Invisalign System is a virtually invisible treatment that uses an innovative approach to gently yet effectively straighten your teeth. Through a series of custom-made removable aligners made with unique SmartForce technology, the Invisalign system gradually and predictably moves your teeth to an ideal position.

## How does the Invisalign System work?

1

During your first appointment, your Invisalign-trained doctor will take photos, X-rays, and digital scans or dental impressions to create your treatment plan.

2

Using Align Technology's proprietary software, your doctor creates a customized 3D treatment plan based on your records, which you can view and know how the final position of your teeth are predicted to reach. This also informs you of the likely length of the treatment.

3

The customized aligners will be manufactured and shipped to your doctor's office.

4

Your series of custom-made aligners will be given to you (typically 3-4 sets at a time) for you to wear every day, and change approximately every 2 weeks.

5

You will visit your Invisalign-trained doctor approximately every 6-8 weeks to monitor your progress, and receive the next series of aligners.

6

Congratulations! You have finished your Invisalign treatment! Maintain your newer, better smile with the use of retainers.

INVISALIGN, ITERO and CLINCHECK, among others, are trademarks and/or service marks of Align Technology, Inc. or one of its subsidiaries or affiliated companies and may be registered in the U.S. and/or other countries.