



DISTRIBUTED BY

KEEP BROS

AND WOOD PROPRIETARY LIMITED

212 LATROBE STREET, MELBOURNE

PHONE **34-0221** 20 LINES

SMITHS

REGD. TRADE MARK OF S. SMITH & SONS (ENGLAND) LTD.

Automotive Catalogue

GOMER FIELD 34.0221.
HAROLD JOHNS

SMITHS

CATALOGUE

Issued 1st October, 1965

AUTOMOTIVE INSTRUMENTS & ACCESSORIES

This Catalogue lists SMITHS Instruments and Accessories manufactured by S. Smith & Sons (Australia) Pty. Ltd. and other associate Companies of S. Smith & Sons (England) Ltd.

The prices quoted herein become effective on 1st October, 1965 and automatically cancel prices shown in any previous lists. All prices are subject to Sales Tax and to change without notice.

SECTION MOTOR ACCESSORIES

Illustrations and listings of Smiths "Universal" or "Accessory" instruments and fittings.

SECTION CARS AND LIGHT VANS

Listings of Smiths products fitted as Original Equipment to passenger vehicles. (Vehicles listed in alphabetical sequence.)

SECTION COMMERCIAL VEHICLES

Listings of Smiths products fitted as Original Equipment to Commercial vehicles and Tractors. (Vehicles listed in alphabetical sequence.)

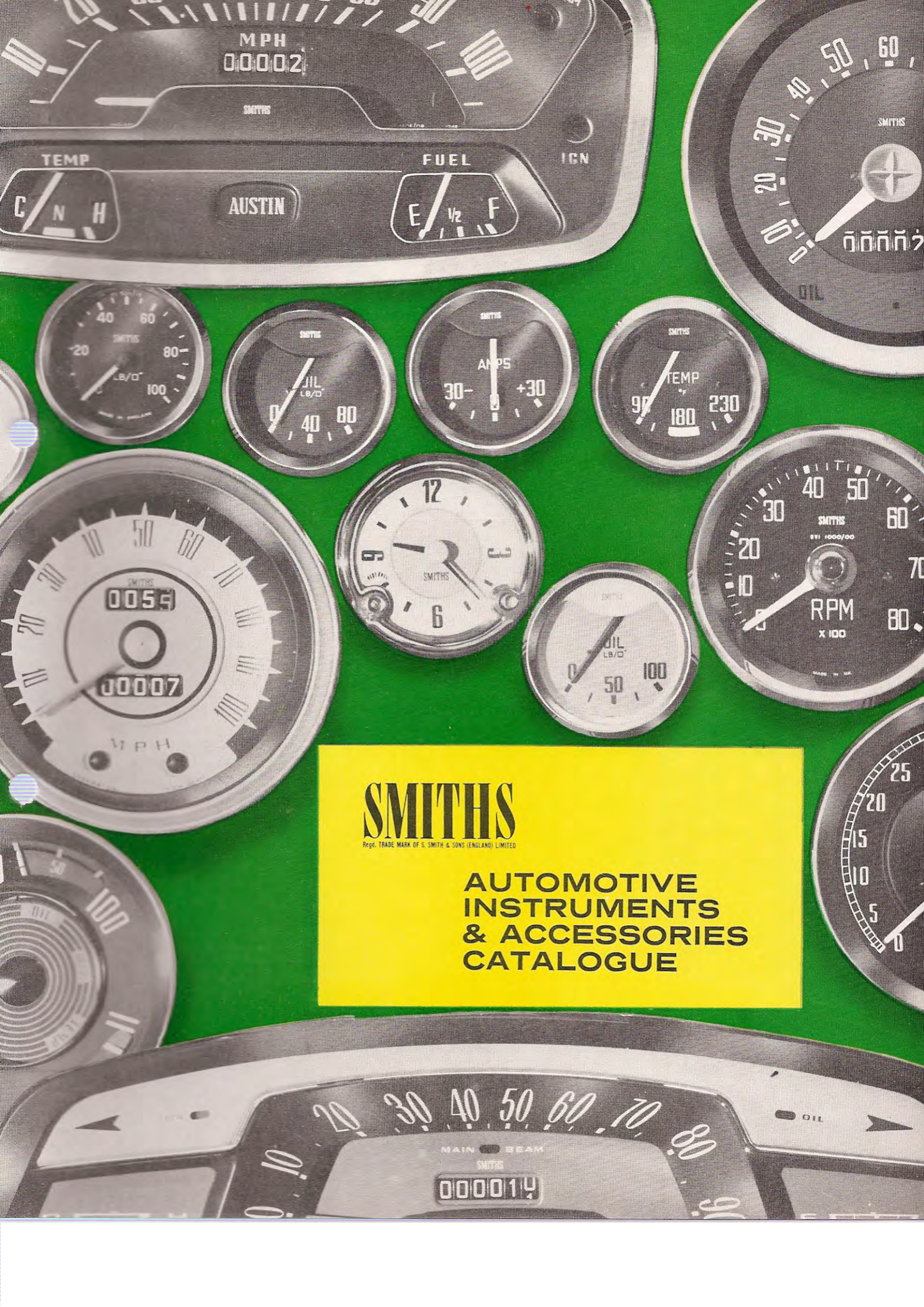
SECTION PRICE LIST

List prices (excluding Sales Tax) for all products included in Catalogue. Prices are shown in numerical sequence under product group in alphabetical order.

SMITHS

*Regd. Trade Mark of S. Smith & Sons (England) Limited

MOTOR ACCESSORIES CATALOGUE



SMITHS

Regd. TRADE MARK OF S. SMITH & SONS (ENGLAND) LIMITED

**AUTOMOTIVE
INSTRUMENTS
& ACCESSORIES
CATALOGUE**

YOU CAN PROFIT WITH
SMITHS Instruments

BECAUSE THERE IS A BIG POTENTIAL MARKET

BECAUSE THEY ARE A FIRST CLASS PRODUCT

BECAUSE THERE IS A VARIETY OF SELLING AIDS

BECAUSE THEY ARE EXTENSIVELY ADVERTISED



DISTRIBUTED BY
KEEP BROS
AND WOOD PROPRIETARY LIMITED

212 LATROBE STREET, MELBOURNE

PHONE **34-0221** 20 LINES

PRICE LIST

	£	s.	d.	\$		£	s.	d.	\$
AMMETERS					PANELS (Cont'd)				
1M1	1	15	0	3.50	53M17	7	6		0.75
1M2	1	15	0	3.50	53M18		6	0	0.60
1M5	2	10	0	5.00	53M19		11	0	1.10
CLOCKS					TACHOMETERS (Impulse)				
CE.2160/08	9	5	0	18.50	KP.1250/00	16	10	0	33.00
CE.2194/09	10	10	0	21.00	KP.1250/02	16	10	0	33.00
DUAL GAUGES					TANK UNITS—UNIVERSAL				
GD.1500/61	6	7	0	12.70	87M15 12V.	3	5	0	6.50
ENGINE PERFORMANCE GAUGE					87M16 6V.				
KP.4506/00	4	4	0	8.40		3	5	0	6.50
FUEL GAUGES					TEMPERATURE GAUGES				
58M11	3	8	9	6.88	92M8 7' Cap.	3	15	0	7.50
58M12	3	8	9	6.88	92M8 10' Cap.	4	0	0	8.00
58M15	3	8	9	6.88	94M7	2	2	0	4.20
HOURLMETERS					94M7A				
ATFC.268/7	10	15	0	21.50	94M12	2	2	0	4.20
ATFC.268/8	10	15	0	21.50	TG.1101/14	5	9	0	10.90
ATFC.268/11	10	15	0	21.50	TG.1102/37	5	9	0	10.90
SK.80569 Tee-Piece	10	0		1.00	TG.1502/27	4	19	0	9.90
OIL PRESSURE GAUGES					TG.1502/53				
61M2	1	15	0	3.50	TEMPERATURE TRANSMITTER				
61M3	1	15	0	3.50	TT.3200/00	1	7	6	2.75
61M4	1	15	0	3.50	THERMOSTATS				
61M5	1	15	0	3.50	30065 Series	3	5	0	6.50
61M6	1	15	0	3.50	43449 Series	4	5	0	8.50
PG.1101/09	3	15	6	7.55	43467 Series	4	5	0	8.50
PG.1101/14	3	15	6	7.55	43497 Series	3	5	0	6.50
PG.1101/15	3	15	6	7.55	43580 Series	6	5	0	12.50
PG.1501/15	3	5	6	6.55	85025 Series	1	12	6	3.25
PG.1501/72	3	5	6	6.55	85035 Series	1	12	6	3.25
PG.1501/75	3	5	6	6.55	4 Pack	5	15	0	11.50
PG.1501/78	3	5	6	6.55	UNIVERSAL GAUGES				
PG.1501/92	3	5	6	6.55	ADAPTORS AND FITTINGS				
PG.1502/29	3	5	6	6.55	Oil Gauge/Pipe Connector				
PG.1504/05	3	5	6	6.55	H14D-5-1/1	5	0		0.50
OIL PRESSURE SWITCHES					30 E.P.G.				
65M3	12	6		1.25	PG.31	3	6		0.35
65M4	12	6		1.25	47M2-1	7	6		0.75
65M5	12	6		1.25	47M11	6	3		0.62
65M6	12	6		1.25	50M8	4	0		0.40
65M11	12	6		1.25	53M3-4-3	7	6		0.75
65M12	12	6		1.25	53M3-11	14	0		1.40
65M13	12	6		1.25	53M3-11/2	16	6		1.65
65M14	12	6		1.25	53M3-13	12	0		1.20
65M15	12	6		1.25	53M6A-7-3	10	0		1.00
65M17	12	6		1.25	53M12-3-4	10	0		1.00
65M18	12	6		1.25	P.76703	5	6		0.55
65M19	12	6		1.25	P.76703/1	5	6		0.55
PS.4201/10 (Hourmeter)	3	8	0	6.80	VACUUM GAUGES				
PANELS					VD.2501/01				
53M9	7	10	0	15.00	VG.1100/02	3	15	6	7.55
53M12	7	10	0	15.00	VG.1301/02	3	5	6	6.55
53M14	7	10	0	15.00					
53M15	9	0	0	18.00					
53M16	2	10	0	5.00					

INSTRUMENTS and the car

What is the ideal instrument panel for a car? Even the experts disagree on this, but they will agree on one thing—some makes of popular cars don't put enough instruments on the dash panel. They are tending to replace the instruments with warning lights, and often these don't operate until damage is done to the engine. Is the average motorist capable of reading car instruments correctly? Some of the experts consider that efficient instruments often make motorists panic when they see that instruments tell them their cars are working a little below peak efficiency. The same experts, however, will agree that the average motorist, if he used a little common sense, could use the instruments to his advantage.

The cost of a full set of instruments is so small in relation to the cost of the car that it is false economy not to put them in.

Most popular cars are now equipped with only a speedometer and a fuel gauge. They have no oil pressure gauge, no ammeter and no water temperature gauge. These, the experts generally agree, are essential. Warning lights which are generally installed on the dashboard to tell the driver his oil pressure is too low or his engine is too hot are not enough.

These are instruments that you would find on the ideal instrument panel in a car.

The car enthusiast will go further and expect to find a tachometer—now only fitted to high class or sports cars.

Anyone will concede that a car will normally run quite well without all these instruments. Instruments are vital in aircraft, but not in cars. If a car stops because of engine trouble the passengers are usually safe. **But to get the best out of a car, a proper selection of instruments is vital.**

Thousands of motorists are counteracting the trend to leave instruments off car panels. They are buying the instruments in thousands and fitting them to their cars. These include ammeters, oil pressure gauges, water temperature gauges, tachometers and vacuum gauges. Instrument manufacturers, such as S. Smith & Sons, now produce a record number of gauges suitable for "Universal" application. These can be bought separately with panels for under dash fitment or in complete kits ready for installation in popular model cars. The experts say that motorists are realising that instruments are becoming more and more necessary as motors become more efficient and powerful for their size.

It can be said that cars in Australia tend to need more instruments than in more closely settled areas such as the United Kingdom or Europe. Because of the distances involved in Australia, cars are much more likely to be in areas where help is hard to get if they break down.

So instruments which may warn of impending trouble are more than a luxury—they are a necessity for efficient and economical motoring.

What does a Smiths Universal Instrument show?

INSTRUMENT	WILL INDICATE THE FOLLOWING FAULTS
AMMETER	Broken fan belt. Faulty generator. Short in the electrical system. Defective battery. Battery not charging.
OIL PRESSURE GAUGE	Lack of oil in sump. Lost sump drain plug. Blocked oil filter. Blocked or fractured oil pipe. Faulty pressure release valve. Badly worn bearings.
WATER TEMPERATURE GAUGE	Lack of water in cooling system. Faulty water pump. Faulty thermostat. Blocked radiator or hoses.
VACUUM & PERFORMANCE GAUGE	Heavy petrol consumption due to bad driving. Incorrect ignition tuning. Incorrect contact breaker setting. Spark plug gaps incorrectly set. Carburettor in need of adjustment.
IMPULSE TACHOMETER	This instrument enables you to get maximum performance in every gear whilst avoiding the risk of damage due to over-revving your engine.

Smith's Universal instruments enable you to drive better and to get maximum performance from your car. At the same time they give early warning as soon as anything goes wrong with your engine. Don't rely on warning lights alone—by the time these come into operation the damage may have been done.

INSTRUCTIONS FOR FITTING SMITHS UNIVERSAL INSTRUMENTS

OIL PRESSURE GAUGE

Mount the instrument in a selected position and secure with the U bracket and holding nuts. To connect the gauge to the oil system of the engine a length of $\frac{3}{16}$ " diameter copper pipe will be required. Where an oil pressure switch is fitted and is required to operate in conjunction with the gauge an engine adaptor will be required. For $\frac{1}{8}$ " Gas threads use Part No. 53M6A-7-3 and for $\frac{1}{4}$ " Gas threads use Part No. 53M12-3-4.

The instrument is supplied with nut, sleeve and washer for connection of the gauge.

Installation

Silver solder the sleeve to one end of the copper pipe and slide the nut into position. The engine end of the pipe should be connected by any suitable means, for example, a flared nut fitting. Take the pipe along the most convenient route from the gauge to the engine, passing it through a convenient grommet in the bulkhead. Should this not be available it will be necessary to drill a $\frac{3}{8}$ " hole in the bulkhead to allow clearance for the nut to pass through. The copper pipe should be coiled at the engine end to absorb vibration, or, if the engine is flexibly mounted, it is desirable to use a flexible hose connection Part No. 53M3-13. A copper pipe with all end fittings is also available as a complete assembly in two lengths, Part No. 53M3-11 (4' long) and Part No. 53M3-11-2 (6' long). Before connecting the copper pipe to the gauge place the end in a container and run the engine at idling speed until oil flows through. Stop the engine and connect the pipe to the gauge, making sure that the sealing washer is in position. Finally, check all connections for leaks.

TYPICAL OIL PRESSURE GAUGE INSTALLATION



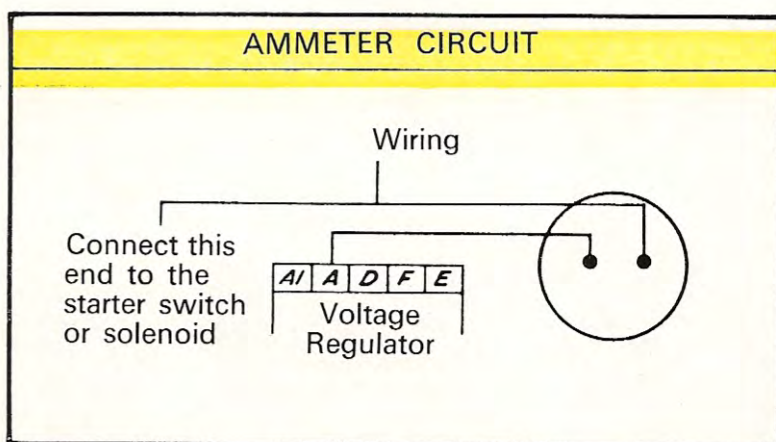
AMMETERS

Mount the instrument in a selected position and secure with the U bracket and holding nuts. The U bracket should be carefully mounted as this part is specially insulated from the terminals. Disconnect the battery before completing the installation.

Installation

As vehicle electrical systems vary, the following instructions are given as a general guide. The lead which runs from the starter solenoid or switch to the voltage regulator should be disconnected at the starter end. From this lead run a new wire to one terminal of the ammeter. From the other side of the ammeter run a second wire to the solenoid or switch. The new wires used should be at least 5 mm. Reconnect the battery. To check the circuit, switch on headlamps when a discharge should be indicated. Should the ammeter show a charge instead of discharge, reverse the two wires at the rear of the ammeter.

AMMETER CIRCUIT



INSTRUCTIONS FOR FITTING SMITHS UNIVERSAL INSTRUMENTS

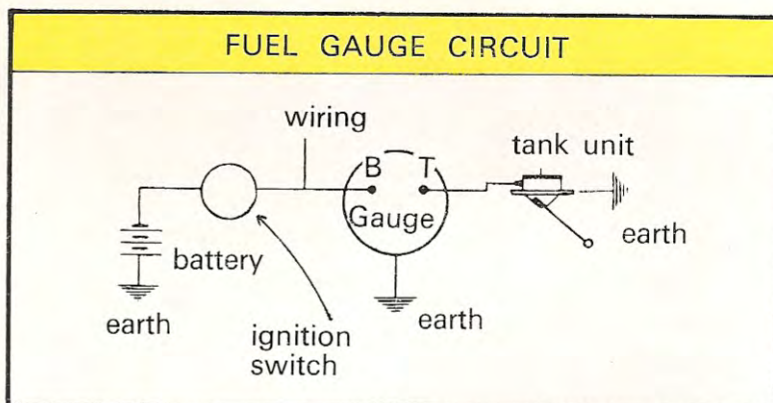
FUEL GAUGE

This gauge operates in conjunction with a Smiths Tank Unit. Smiths Tank Units are available in "Universal" Kits, Part No. 87M15 for 12V. and Part No. 87M16 for 6V. operation. It will be necessary therefore to closely follow the "Fitting Instructions" supplied with the tank units.

The indicator is mounted in a selected position on the dash and secured with the U bracket and holding nuts.

Connect the fuel gauge T terminal to the tank unit terminal by means of insulated wire. The terminal marked "B" at the rear of the gauge must be connected to any convenient point on the outlet side of the ignition switch, such as the lead to the ignition coil.

The indicator and tank unit must both be well earthed to complete the electrical circuit.



TEMPERATURE GAUGE

A. (ELECTRICAL TYPE)

This gauge operates in conjunction with a Smiths Temperature Transmitter Part No. TT-3200-00.

The indicator is mounted in a selected position on the dash and secured with the U bracket and holding nuts. The transmitter must be fitted in the cooling system of the engine.

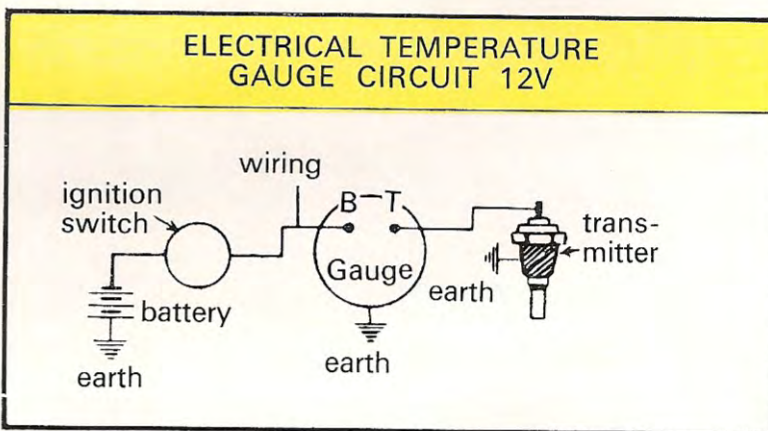
Installation

It is desirable to disconnect the battery during the installation of this unit.

On most engines provision for fitting a temperature gauge is made and a core plug on the engine gives access for the temperature transmitter to a suitable water jacket. Having drained the cooling system to a level just below this position and having removed the core plug, the transmitter is fitted using, if necessary, a $\frac{3}{8}$ " B.S.P. (Part No. P76703) or $\frac{1}{2}$ " Gas (Part No. 53M3-4-3) Adaptor. When no provision is made on the engine for fitting a temperature gauge, a Hose Adaptor (Part No. 47M2-1) can be fitted into the top radiator water hose.

To complete the installation, the terminal marked "B" at the rear of the indicator must be connected to any convenient point on the outlet side of the ignition switch, such as the lead to the ignition coil. The T terminal at the rear of the indicator must be coupled to the transmitter terminal. It is essential that the indicator and transmitter are both well earthed to complete the electrical circuit. When a Hose Adaptor is used, a special terminal is provided for earthing.

Refill cooling system to correct level before testing.



B. (CAPILLARY TYPE)

If necessary, cut a $\frac{3}{8}$ " diameter hole in the bulkhead through which to pass the bulb and the capillary tube. On no account must the tubing be disconnected from the bulb or the gauge. The tubing should be attached by means of clips or tape to any suitable structural member and should be kept away from parts of the engine which become excessively hot.

Surplus tubing can be formed into two or more coils ($2\frac{1}{2}$ " diameter) to absorb engine vibration.

On most engines provision for fitting a temperature gauge is made and a core plug on the engine gives access for the temperature bulb to a suitable water jacket. Having drained the cooling system to a level just below this position, and having removed the core plug, the bulb is fitted by means of the $\frac{3}{8}$ " UNF union nut. If necessary, a reducing bush $\frac{3}{8}$ " B.S.P. (Part No. P76703) or $\frac{1}{2}$ " Gas (Part No. 53M3-4-3) should be used. When no provision is made on the engine for fitting a temperature gauge, a Hose Adaptor (Part No. 47M2-1) can be fitted into the top radiator water hose.

Sharp bends should be avoided in the capillary tubing. The tubing must not be twisted during fitting and no sharp tools should be applied to it.

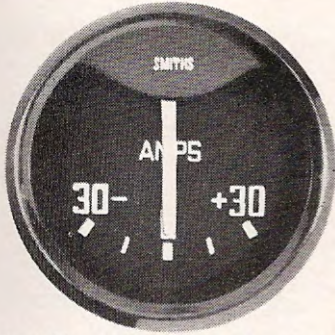
SMITHS

Regd. TRADE MARK OF S. SMITH & SONS (ENGLAND) LIMITED

INSTRUMENTS

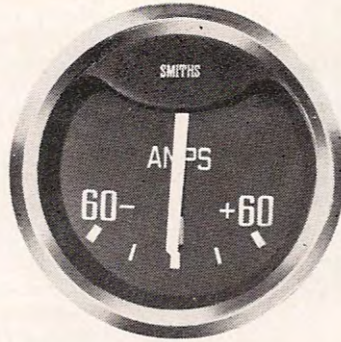
For better motoring

AMMETERS



Part No. IM1 (30-0-30 amps)
Black Dial

Part No. IM2 (30-0-30 amps)
Blue Dial



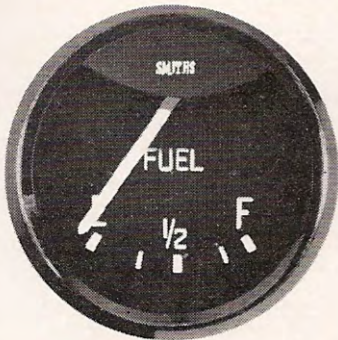
Part No. IM5 (60-0-60 amps)
Black Dial

ACCESSORIES — Lighting Attachment 12V. Part No. 50M8.

An ammeter shows the rate of charge and discharge of the generator and can be of great value in the warning of possible faults in the electrical system. When the gauge indicates a discharge (e.g. —) even at high vehicle speed, this may be the result of a broken or slipping fan belt, a faulty generator or a short circuit.

A constant charge (e.g. +) may mean just that the generator is overcharging and needs adjustment; or it may mean a faulty battery unable to hold the charge and likely to fail completely.

FUEL GAUGES



Part No. 58M11 12V.
black dial

Part No. 58M15 6V.
black dial

Part No. 58M12 12V.
blue dial

ACCESSORIES
Lighting Attachment 12V.
Part No. 50 M8

The electro-magnetic fuel level indicating system is made up of two separate units. These are the Fuel Gauge mounted on the instrument panel and the Tank Unit.

The Fuel Gauge is calibrated for universal application and is available for 6V. and 12V. systems.

The Smiths Universal Tank Unit has been designed to provide a variable length of float arm and is therefore suitable for a wide range of tank depths, varying from 4" to 14" deep. The unit is supplied in a kit complete with fittings, which include a special split mounting ring, which is necessary for tanks not having provision for the installation of fuel content equipment.

"UNIVERSAL" TANK UNIT



Complete Kit Part No. 87M16 6 volt

Complete Kit Part No. 87M15 12 volt

SMITHS

Regd. TRADE MARK OF S. SMITH & SONS (ENGLAND) LIMITED

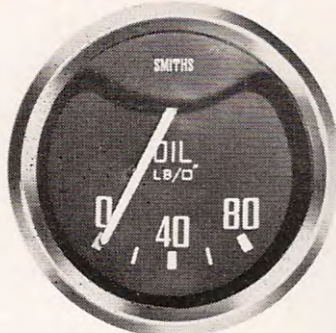
INSTRUMENTS

For better motoring

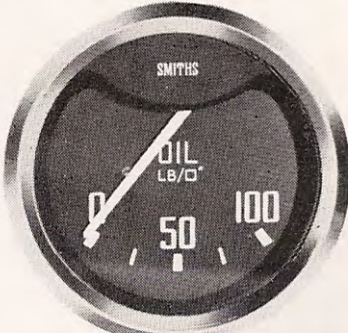
OIL PRESSURE GAUGE



Part No. 61M2
(0-60 p.s.i.)
black dial



Part No. 61M4
(0-80 p.s.i.)
black dial



Part No. 61M3
(0-100 p.s.i.)
black dial



Part No. PG 1501/78
(0-60 p.s.i.)
black dial



Part No. PG1501.15
(0-100 p.s.i.)
black dial



Part No. PG1501.72
(0-160 p.s.i.)
black dial

The Oil Warning Light is a necessary safeguard in the absence of a gauge but it lights up only when disaster is imminent.

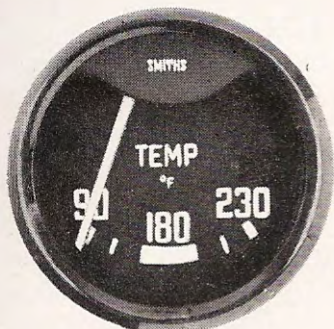
Our Oil Pressure Gauge gives a constant reminder of the oil level in the lubrication system. Unusually low pressure can also mean a faulty oil pump or worn engine bearings; unusually high pressure can mean blocked oil lines or a choked filter or even just that the wrong oil is used. Either reading will suggest that the pressure relief valve needs checking.

ACCESSORIES

Part No.	Description
53M3-11	Copper pipe 4' long
53M3-11/2	Copper pipe 6' long
53M12-3-4	¼" Gas Engine Adaptor
53M6A-7-3	⅛" Gas Engine Adaptor
53M2-0-1	V.W. Engine Adaptor
53M3-13	Flexible Hose
PG31	Oil Gauge Pipe Connectors
47M11	Lighting Attachment (for full scale gauges)
50M8	Lighting Attachment (for arc scale gauges)

ARC SCALE	FULL SCALE	FULL SCALE (WATERPROOF)
Part No. 61M2 0-60 p.s.i. black dial	Part No. PG1502/29 0-5 p.s.i. black dial	Part No. PG1101/15 0-60 p.s.i. black dial
Part No. 61M4 0-80 p.s.i. black dial	Part No. PG1501/75 0-10 p.s.i. black dial	Part No. PG1101/14 0-100 p.s.i. black dial
Part No. 61M3 0-100 p.s.i. black dial	Part No. PG1501/92 0-25 p.s.i. black dial	Part No. PG1101/09 0-160 p.s.i. black dial
Part No. 61M5 0-80 p.s.i. blue dial	Part No. PG1504/05 0-40 p.s.i. black dial	
Part No. 61M6 0-100 p.s.i. blue dial	Part No. PG1501/78 0-60 p.s.i. black dial	
	Part No. PG1501/15 0-100 p.s.i. black dial	
	Part No. PG1501/72 0-160 p.s.i. black dial	

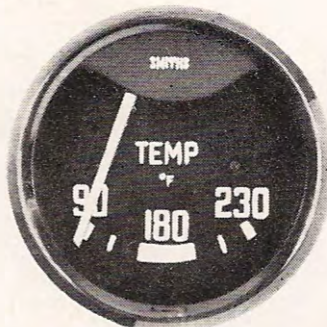
TEMPERATURE GAUGES



Part No. 94M7
12V. Electric
90°-230°F.
Black Dial



Part No.
TT3200/00
12V. Elec.
Transmitter



Part No. 92M8
Capillary Type
7' or 10' long
90°-230°F.
Black Dial



Part No. TG1502/27
Capillary Type
7' or 10' long
90°-212°F. Black Dial

Extremes of heat and cold are bad for any engine; overheating is indicative of several forms of trouble whilst an engine that never warms up properly is inefficient.

When a temperature gauge reads high it may mean a radiator leak; it can also give warning of a broken or slipping fan belt, a faulty water pump, blocked waterways or the thermostat or ignition timing needing attention.

If the gauge reads unusually low, this may show thermostat failure. Under this condition a car heater, if fitted, is highly ineffective.

ARC SCALE		FULL SCALE	
Part No. 94M7	90°-230°F Electric Black Dial	Part No. TG1502/27	90°-212°F Black Dial
Part No. 94M12	90°-230°F Electric Blue Dial	Part No. TG1502/53	90°-250°F Black Dial
Part No. TT3200/00	Elec. Transmitter for Above	Part No. TG1102/37	90°-212°F (Waterproof)
Part No. 92M8	90°-230°F Capillary 7' or 10'	Part No. TG1101/14	90°-250°F (Waterproof)

ACCESSORIES	
Part No. P76703	$\frac{3}{8}$ " B.S.P. Engine Adaptor
Part No. P76703/1	$\frac{5}{8}$ " U.N.F. Engine Adaptor
Part No. 53M3-4-3	$\frac{1}{2}$ " Gas Engine Adaptor
Part No. 47M2-1	Radiator Hose Adaptor
Part No. H14D-5-1/1	$\frac{5}{8}$ " U.N.F. Adaptor Plate for B.M.C. Engines
Part No. 53M15-2-1	Engine Adaptor for Simca
Part No. 50M8	Lighting Attachment 12V. (For Arc Scale Gauges)
Part No. 47M11	Lighting Attachment 12V. (For Full Scale Gauges)

The ARC Scale electric gauge is available as a complete kit (Part No. 94M7A) consisting of:

94M7	Temperature Gauge	47M2-1	Hose Adaptor
TT3200/00	Temperature Transmitter	53M3-4-3	$\frac{1}{2}$ " Gas Adaptor
50M8	Gauge Lighting Attachment		

SMITHS

Regd. TRADE MARK OF S. SMITH & SONS (ENGLAND) LIMITED

INSTRUMENTS

For better motoring

DUAL GAUGE



Part No. GD1500/61
0-100 p.s.i.
90°-230°F.
Black Dial

The Smiths Dual Gauge is the ideal solution to the problem of reducing the number of instruments to be fitted, especially where limited space is available on the dashboard. It combines an Oil Pressure and Water Temperature Gauge, yet it will match in style any other gauge (i.e., Ammeter).

Installation is simple and the unit is available with 7 ft. or 10 ft. of capillary tubing for the Temperature Gauge.

ACCESSORIES—Lighting Attachment 12V. Part No. 47M11.

CAR CLOCKS

There are two versions of the famous Smiths electric car clocks. These are the 2" "Universal" 12V. clock with bottom reset and the 2 1/4" "Universal" 12V. clock with front reset and regulator. Both units are suitable for Positive Earth systems, but there is a version of the 2 1/4" unit for Negative Earth systems (Part No. CE2194/16).



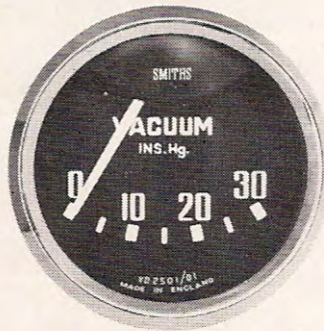
Part No. CE2160/08
2" Black Dial—12V.
+ Earth—Bottom Reset

Part No. CE2194/09
2 1/4"—Black Dial—12V.
+ Earth—Front Reset



VACUUM GAUGES

Smiths Vacuum Gauges are supplied for use with vacuum brakes on commercial vehicles. They may also be used to advantage to measure the depression in the induction manifold, thereby giving an indication of engine performance. There is, however, an Engine Performance Gauge, specially calibrated for this purpose, and details are shown on Page 11.



Part No. VD2501/01
0-30" Hg.—Black Dial



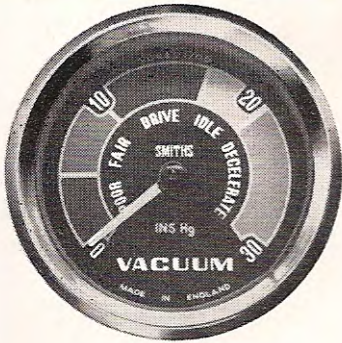
Part No. VG1301/02
0-30" Hg.—Black Dial

ARC SCALE	FULL SCALE	ARC SCALE (WATERPROOF)
Part No. VD.2501/01 0-30" Hg.	Part No. VG.1301/02 0-30" Hg.	Part No. VG.1100/02 0-30" Hg.
ACCESSORIES Part No. EPG30 Universal Kit of Engine Fittings		

SMITHS

Regd. TRADE MARK OF S. SMITH & SONS (ENGLAND) LIMITED

INSTRUMENTS *For better motoring*



Engine Performance Gauge
Part No. KP4506/00
(Complete Kit)

- A sure and ready guide for obtaining maximum efficiency from your engine.
- Enables you to reduce wear and tear.
- Saves petrol by indicating wastage of fuel.
- Gives warning of impending faults.
- Complete set of accessories for simple installation.

OPERATING INFORMATION (with engine in good condition)

The colour panels show gauge indication generally obtained. It should be noted that throttle opening under load will cause pointer to move towards the red sector and deceleration causes the pointer to move towards the yellow sector.

With engine idling on fast tick-over (400/500 r.p.m.) and gear in neutral, gauge pointer should be in the green sector. Under similar conditions the pointer in any other colour sector indicates engine inefficiency.

ENGINE PERFORMANCE GAUGE

USING THE ENGINE PERFORMANCE GAUGE

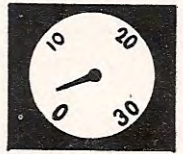
Every time you press your accelerator it can cost unnecessary money, because unless acceleration is correct, engine wear and fuel consumption are increased. The fitting of a Smiths engine performance gauge can solve both problems and assist you in driving with the minimum of fuel consumption without loss of performance.

The pressure in the manifold is related to the amount of fuel consumed and over-acceleration takes too much fuel for the power needed. It is also possible that the engine receives insufficient fuel and power is lost. By knowing the approximate manifold pressure, wear and wasted fuel can easily be avoided and you will soon reap the benefit of constant fuel saving.

The gauge also serves as a warning of impending trouble such as worn valves, leaking gaskets, etc., and early attention can prevent costly faults developing.

THROTTLE OPEN

Engine pulling under heavy load or high rate of acceleration. Sudden depression of the throttle pedal will cause pointer to drop to '0'. Wasteful fuel consumption, which can be amended by changing to a lower gear. Pointer remaining in red sector indicates leak in manifold, carburettor or carburettor gasket.



RED

THROTTLE APPROXIMATELY HALF OPEN

Fast cruising condition or medium rate of acceleration. Efficient fuel consumption allied with relative performance. Slow oscillation in blue sector indicates incorrect sparking plug gapping or contact breaker points pitted or carburettor out of adjustment.



ORANGE

THROTTLE APPROXIMATELY QUARTER OPEN

Normal cruising condition with engine pulling easily under light load. Maximum fuel economy. Pointer dropping slightly from normal position suggests leaky or burnt valves.



BLUE

THROTTLE CLOSED

Engine idling under no load or throttle slightly open with engine accelerating. Pointer giving steady low reading indicates incorrect ignition or valve timing or poor condition of piston rings.



GREEN

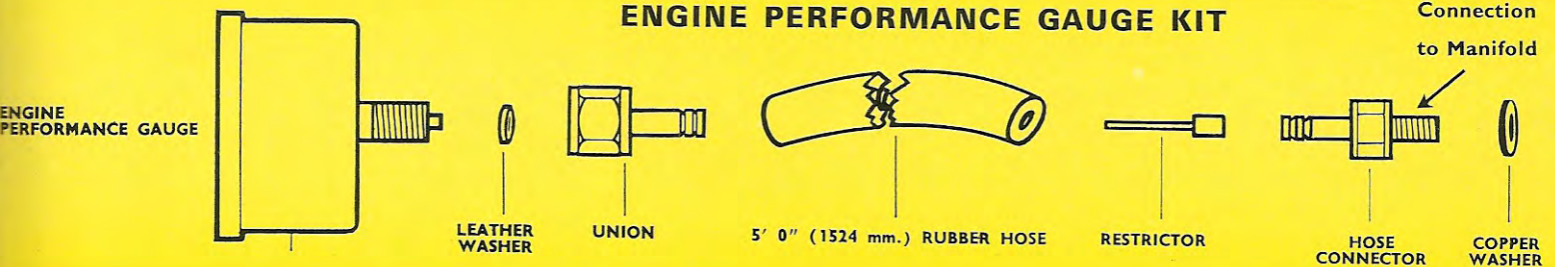
THROTTLE CLOSED

Vehicle over-running engine and using engine as a brake. Driving under this condition may result in oiled-up plugs and heavy oil consumption in worn engine. Poor economy. A steady gauge reading well inside the green sector indicates good engine condition.



YELLOW

ENGINE PERFORMANCE GAUGE KIT



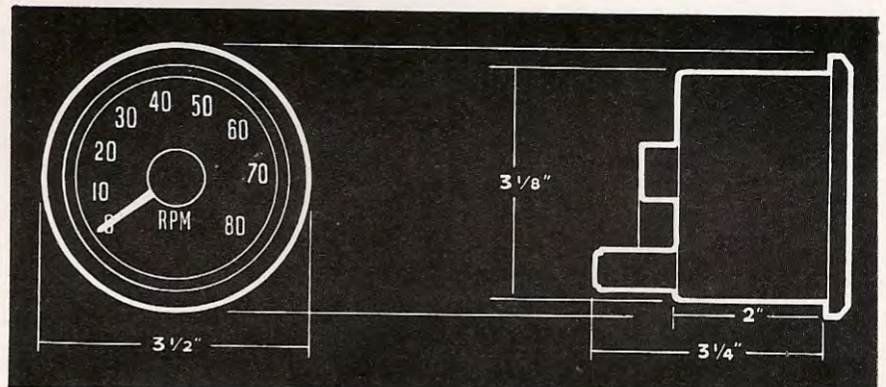
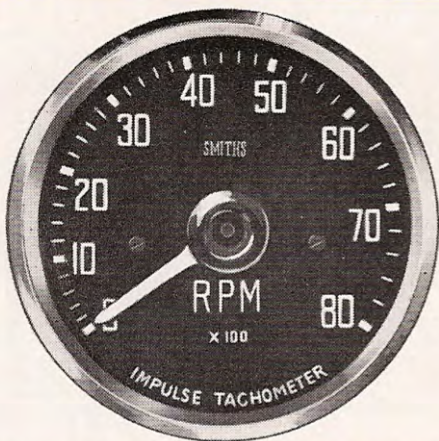
SMITHS

Regd. TRADE MARK OF S. SMITH & SONS (ENGLAND) LIMITED

INSTRUMENTS

For better motoring

IMPULSE TACHOMETER FOR CARS



The motorist who takes a pride in his driving—obtaining the most economical running without sacrifice to performance—considers it essential to know the R.P.M. of the engine. Only by having this information can he be fully aware of engine and gearbox behaviour.

Intimate knowledge of engine R.P.M. provides constant warning of impending troubles and means of checking and improving performance.

Consider these advantages of a tachometer in a car:
Maximum Engine Performance—By facilitating the selection of the correct gear ratio for maximum torque.

Correct Engine Adjustments—Proper adjustment for spark settings and plug and point gaps.

Best Type of Fuel—By helping to determine quickly whether fuel changes are beneficial.

Greatest Economy—By helping to determine the most economical cruising speed (R.P.M.) without overstressing the engine. The use of transistor and printed circuit techniques and the vast experience of Smiths instrument engineers have led to the development of this new and attractively styled revolution indicator; it requires no direct electrical connection to, or interference with, the engine ignition system and installation is very easily achieved.

Supplied as a kit complete with instrument head, mounting bracket and requisite leads, these new instruments have the following advantages:

- * 270° Full Scale Reading.
- * Simple installation.
- * Accurate and reliable.
- * No take-off from engine.
- * Internal illumination.

FITTING

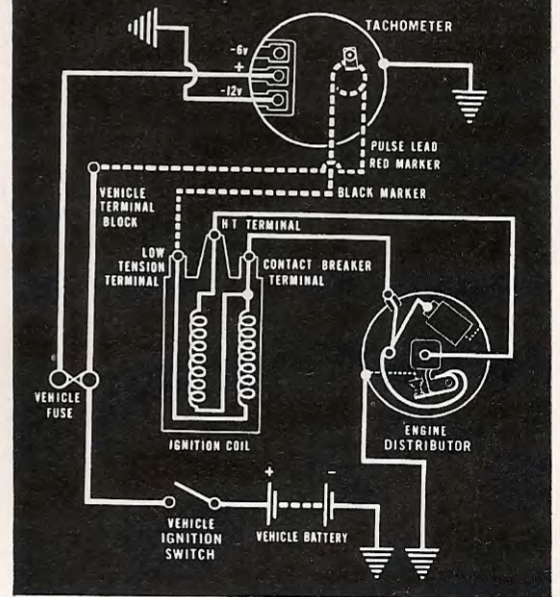
Full instructions for fitting are supplied with each kit. On most cars it will be possible to mount the instrument in the fascia panel by cutting a suitable hole. The instrument can then be retained in position with the fixing strap.

If there is insufficient room on the existing panel the fixing bracket supplied in the kit can be used to mount the instrument in a convenient position under the dashboard.

APPLICATION

The instrument leaves the factory calibrated for operation on 4 cyl. 4 stroke (and 2 cyl. 2 stroke) I.C. petrol engines employing a 6V. or 12V. coil-ignition system. Recalibration for an additional range of applications, as shown below, can be carried out by any official Smiths Distributor, using special equipment.

- 3 CYL. 2 STROKE I.C. PETROL ENGINES
- 6 CYL. 4 STROKE I.C. PETROL ENGINES
- 8 CYL. 4 STROKE I.C. PETROL ENGINES (AND 4 CYL. 2 STROKE I.C. PETROL ENGINES)



ELECTRICAL CONNECTIONS

Details of electrical connections covering 6V. or 12V. positive or negative earth operation are included in the fitting instructions supplied with each kit.

The wiring diagram on this page shows electrical connections between the tachometer and a 12V. negative earth system.

- TYPES** — Part No. **KP1250/00**
 0-8000 RPM for 6V. or 12V.
 + or — Earth Systems
 (No. of cylinders to be specified)
- Part No. **KP1250/02**
 0-10,000 RPM for 6V. or 12V.
 + or — Earth Systems
 (For 4 cylinder application only)

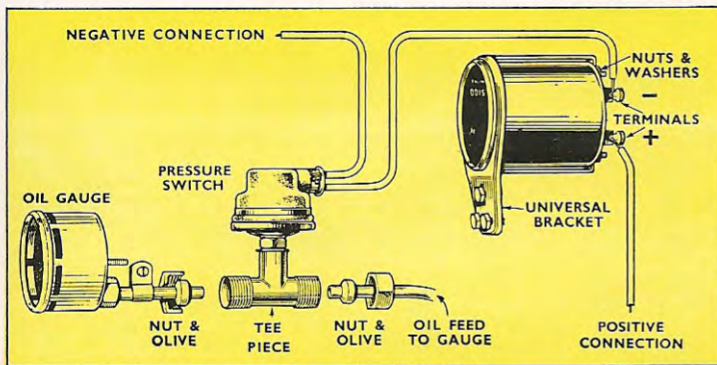
SMITHS

Regd. TRADE MARK OF S. SMITH & SONS (ENGLAND) LIMITED

INSTRUMENTS

For better motoring

ENGINE HOURMETER



The Engine Hour Meter has been produced to meet the demand for an instrument adaptable to engines with the minimum of installation difficulties, which will accurately and permanently register the operating hours of the engine. The instrument consists of a simple yet reliable movement incorporating a self-starting device and can be mounted in a remote position from the engine should this be required. A small indicator is provided in the centre of the dial to show when the meter is functioning. It can be suitable for either 6 or 12 volts D.C. and normally would be connected to the ignition switch. For diesel engines a special double pole oil pressure switch operating on rising pressure is available, this ensures that the meter will be started and stopped coincident with the engine. This oil pressure switch can also be used on petrol engines when considered desirable so as to avoid the risk of the ignition switch being left on when the engine is not, in fact, running.

Further applications are as follows:



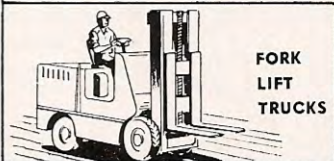
GENERATING SET



CRANE



AGRICULTURAL TRACTOR



FORK LIFT TRUCKS



TRAWLERS

AND OTHER SMALL CRAFT

USES FOR THE ENGINE HOURMETER

The Engine Hour Meter is essential for all normal engine service, periodic oil changes and less frequent major overhauls. Such normal service if carried out too frequently can prove an uneconomic drain on operating cost, whilst if not carried out at the correct period it can seriously impair engine life with the far more costly problem of engine replacement. The accurate determination, therefore, of service period is very essential and the Engine Hour Meter will very quickly justify its own installation cost. For contractual work it can provide an accurate record for assessing labour cost.

UNIT	Part No.	GENERAL SPECIFICATION
Meter 6V	ATFC268/7	Size 2.362" Panel Aperture
Meter 12V	ATFC268/8	Accuracy $\pm 0.833\%$ (15°C to 30°C)
Meter 24V	ATFC268/11	Counter Four figure non-reset type
Oil Pressure Switch	PS4201/10	Unit Returns to zero after 10,000 hours.
"T" Piece $\frac{3}{16}$ " / $\frac{1}{4}$ " B.S.P.	SK80569	5 mm. high white figures on black background.
		Mounting Strap
		Sealing Waterproof
		Operation Via ignition switch or oil pressure switch.

SMITHS

Regd. TRADE MARK OF S. SMITH & SONS (ENGLAND) LIMITED

INSTRUMENTS

For better motoring

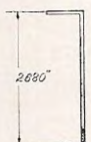
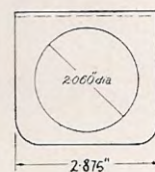
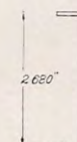
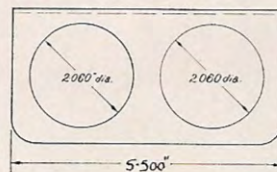
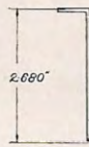
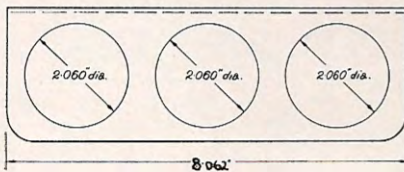
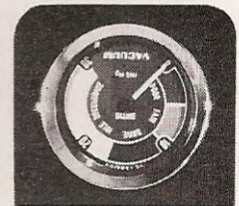
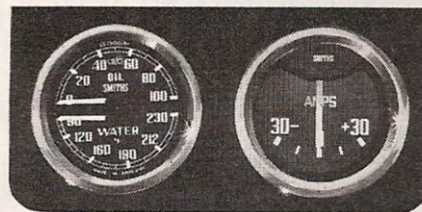
INSTRUMENT PANELS

STANDARD MOUNTING PANELS

SMITHS instrument mounting panels are ideal for fitting supplementary instruments to vehicles, especially where limited dash-board space is available.

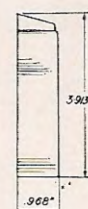
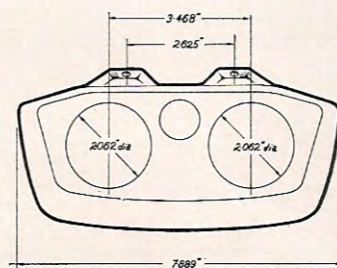
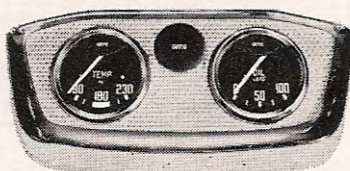
They are an inexpensive and attractive method of mounting any of the SMITHS range of 2" Universal Gauges. Attaching screws and nuts are included for simple installation.

FINISH		Part No.
Chrome:	Single Hole	53M17
	Dual Hole	53M19
	Three Hole	53M21
Wrinkle Black:	Single Hole	53M18
	Dual Hole	53M20
	Three Hole	53M22



DE LUXE MOUNTING PANEL

The de-luxe mounting panel has provision for two SMITHS 2" instruments. Cigarette lighter or an extra switch may also be incorporated in the space provided. Attractively styled with a chromium bezel and silver background, it enhances the appearance of any dashboard. It may be attached by the two fixing lugs to any convenient position under the dashboard. **Part No. 53M16.**



SMITHS

Regd. TRADE MARK OF S. SMITH & SONS (ENGLAND) LIMITED

INSTRUMENTS

For better motoring

INSTRUMENT PANEL KITS

Designed by SMITHS, these Auxiliary Panels have been tailored to fit specific vehicles and are supplied in kits with all necessary fittings for installation.

The panels take up very little space under the dashboard and the dials match the other instruments in colour and styling.

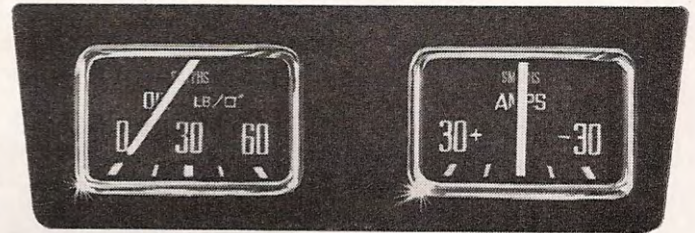
Easy-to-follow fitting instructions are included in all kits and make it possible for the average car owner to carry out the installation.

The internal lighting of the gauges is connected to the main panel lights.

HOLDEN

Instrument Panel Kit to suit Holden FE, FC, FB, EK, EJ and EH.

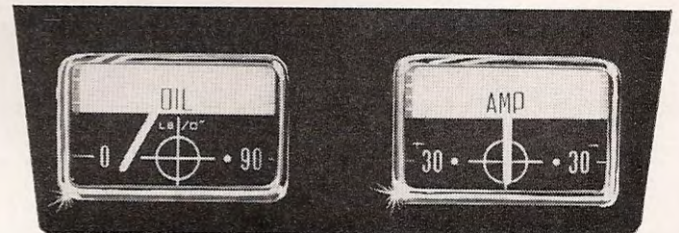
Comprising Oil Gauge and Ammeter.
Part No. 53M9.



FALCON

Instrument Panel Kit to suit all Ford Falcon models.

Comprising Oil Gauge and Ammeter.
Part No. 53M12.

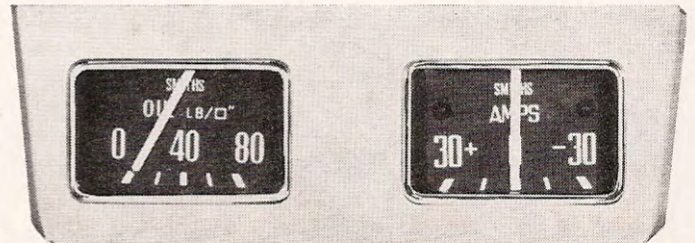


SIMCA

Instrument Panel Kit to suit Simca Aronde, available in two instrument combinations.

Part No. 53M14—Oil Gauge—Ammeter.

Part No. 53M15—Oil Gauge—Temperature Gauge.



Part No.	Description	List Price		
		£	s.	d.
53M17	Single Hole Mounting Panel (Chrome)		7	6
53M19	Dual Hole Mounting Panel (Chrome)		11	0
53M21	Three Hole Mounting Panel (Chrome)		14	0
53M18	Single Hole Mounting Panel (Black)		6	0
53M20	Dual Hole Mounting Panel (Black)		9	0
53M22	Three Hole Mounting Panel (Black)		11	0
53M16	De-Luxe Mounting Panel	2	10	0
53M9	Auxiliary Panel—Holden FE, FC, FB, EK, EJ, EH	7	10	0
53M12	Auxiliary Panel—Ford Falcon	7	10	0
53M14	Auxiliary Panel (Oil Gauge/Ammeter)—Simca Aronde	7	10	0
53M15	Auxiliary Panel (Oil Gauge/Temperature Gauge)—Simca Aronde	9	0	0

Sales Tax must be added to prices quoted.

SMITHS

Regd. TRADE MARK OF S. SMITH & SONS (ENGLAND) LIMITED

ACCESSORIES *For better motoring*

THERMOSTATS

FOR
Greater
Car Heater
Efficiency

FOR
Increased
Engine
Economy and
Performance



The Thermostat—as its name implies—is a temperature sensitive valve. When closed it prevents coolant in the engine from flowing to the radiator. Instead, it directs it through a by-pass so that it merely circulates in the jackets. Consequently this comparatively small volume of water heats rapidly, bringing the engine to working temperature far more quickly and so cutting to a minimum the period of cold running when engine wear is greatest.

Obviously, this trapped water would soon vaporise were it to be confined to the jackets for too long, and the thermostat is thus arranged to begin opening well before danger point is reached—at about 175°F. As the valve opens the water begins to circulate throughout the entire system and by the time the engine is at its proper working temperature the valve is fully open. The thermostat therefore automatically regulates the circulation of the water, to maintain proper engine temperature, thus the water of the cooling system plays as important a part in the engine's operation as its fuel and lubricating oil.

WHY DIFFERENT THERMOSTATS FOR WINTER AND SUMMER?



WHY MODERN COOLING SYSTEMS ARE PRESSURISED



THERMOSTATS DON'T LAST FOREVER



The task of maintaining engine temperature within the recommended 180°F and 200°F range places a different burden on the cooling system during the winter than during the summer. To some extent this will depend on the extremes of summer and winter temperature which are experienced in different parts of Australia.

A "180°" thermostat is usually recommended during the winter, when the dangers of over-cooling are greater and hotter water temperature is desired to increase a car heater output for passenger comfort.

During warm summer months, however, a "normal" setting thermostat should be fitted to prevent over-heating.

The cooling system of today's high-compression engine is designed to operate under pressures as high as 16 pounds per square inch, to increase the efficiency of the cooling process. Pressure—created by sealing the cooling system with a pressure-tight radiator cap—raises the boiling point of the water above the normal 212°F, increasing it 3°F for each pound of pressure in the system. The higher the boiling point, the higher the water temperature can go without risk of boiling and overflowing—and the more heat the water can carry from the engine. Higher cooling system pressure also increases the efficiency of the water pump.

Thermostats work hard, particularly in cold weather—and like any moving part, wear out. The effective life of a thermostat depends on the weather, driving habits and other variables. Where the same thermostat is used all year round, replacement is recommended once a year. When different thermostats are used for summer and winter operation, replacement of each every two years or 20,000 miles is recommended.

SMITHS

Regd. TRADE MARK OF S. SMITH & SONS (ENGLAND) LIMITED

ACCESSORIES

For better motoring

MAKE AND MODEL	PART No. (Normal)	PART No. (Heater Fitted)	Thermostat Opening Temperatures		
			Code	°C	°F
AUSTIN A70, Princess and Sheerline models All other models except Freeway	30065/4 85025/74	30065/34 85025/80	30065/4	72	162
AUSTIN HEALEY All models	85025/74	85025/80	30065/19	78	172
COMMER 8 Cwt. Van IV to VIIA Cob Van Cob Van Series II	85035/70 85035/70 85035/80	85035/80 85035/80 85035/80	30065/34 30065/40	81 77	178 171
FIAT 1800 and 2100	85035/80	85035/80	43400/2	78	172
FORD Pilot V8 Anglia & Prefect—to 1952 Anglia & Prefect 1953/1961 New Anglia 105E & Cortina Consul, Zephyr & Zodiac Mk. I Consul, Zephyr & Zodiac Mk. II	43497/1 43497/1 85035/80 85035/86 85035/80 85025/80	43497/2 43497/2 85035/80 85035/86 85035/80 85025/80	43402/1 43449 43467/1 43497/1	72 72 72 70	162 162 162 158
HILLMAN Minx Mk. IV to Mk. VIII Minx Series I to IiIC Husky Series II & Super Minx Husky Series I	85035/78 85035/80 85035/70	85035/80 85035/80 85035/80	43497/2 43580/1 85025/60	83 75 60	181 167 140
HOLDEN All Models Up to EH	85035/72	85035/80	85025/68	68	154
HUMBER Hawk Mk. III, IV & V Hawk Mk. VI & New Hawk Super Snipe Series I to IV	85035/74 85035/80 85035/80	85035/80 85035/80 85035/80	85025/70 85025/74	70 74	158 165
JAGUAR Mk. VII & VIII, 2.4 & 3.4 Litre Models XK120 & XK140, 3.8 Litre Models	85025/74 85025/60	85025/74 85025/70	85025/80 85035/70	80 70	176 158
M.G. TC & TD, 1½ Litre Models TF Magnetite M.G.A. (All Models) M.G.B.	43449 85035/72 85025/74 85025/74	43449 85035/80 85025/80 85025/80	85035/72 85035/74	72 74	162 165
MORRIS Minor (OHV Engine) and "1000" Mini-Minor, Major Series I & II Oxford Six, Isis Oxford Series II, III & V & Marshall	85025/74 85025/74 85035/74 85025/74	85025/80 85025/80 85035/80 85025/80	85035/76 85035/78 85035/80	76 78 80	169 172 176
RILEY 12HP 1½ Litre & 16HP 2½ Litre Pathfinder	43467/1 85035/72	43467/1 85035/80	85035/86	86	187
ROVER 60, 75, 90, 105, P4 & P5	85035/76	85035/76			
SINGER SM1500 & Hunter Gazelle—Series I, II & III	85035/72 85035/80	85035/80 85035/80			
STANDARD 8 HP & 10 HP Vanguard Phase I From Chassis No. 85001 Vanguard Phase II & III Vanguard Phase IV 6 Cyl.	85035/70 43580/1 85025/70 85025/74 85035/70	85035/80 43580/1 85025/80 85025/80 85035/80			
TRIUMPH Mayflower TR2, TR3 & TR4 Herald Herald 1200	85035/74 85025/70 85035/70 85035/80	85035/80 85025/80 85035/80 85035/80			
VAUXHALL Cresta, Velox, Wyvern & Victor	85035/72	85035/80			
WOLSELEY 4/44, 4/50 & 6/80 1500, 6/90 & 15/60 6/99, 6/110	85035/74 85025/74 85025/70	85035/80 85025/80 85025/80			

Stock Thermostats the
easy way with SMITHS
Universal

4 Thermostat
pack

90% of vehicle thermostat
requirements covered for
both summer and winter.

15/- saved when you buy
this way.

SMITHS

Regd. TRADE MARK OF S. SMITH & SONS (ENGLAND) LIMITED

INSTRUMENTS

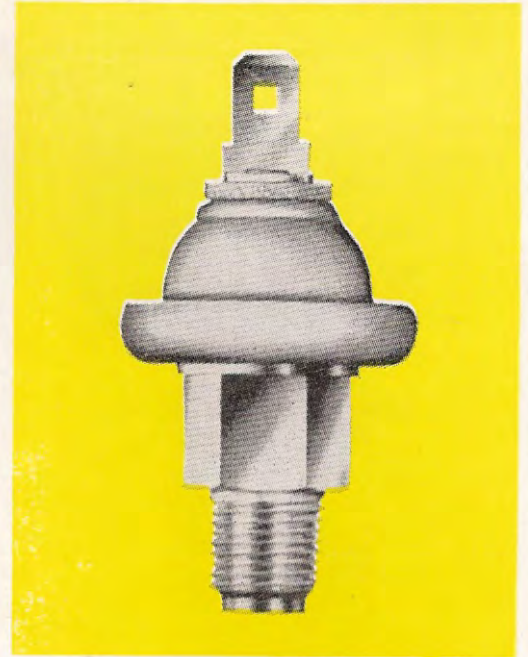
For better motoring

OIL PRESSURE SWITCHES

Every motorist knows that oil pressure is the "blood pressure" of any engine and without it the engine will, very quickly, cease to function. The oil pressure switch, together with the warning light fitted to the dashboard of motor cars, is one of the most vital units and one that is very often forgotten. In the absence of an oil pressure gauge it is the minimum protection against the dangers of improper engine lubrication.

A faulty oil pressure switch leaves the driver without any warning should the pressure drop to a dangerous level and with today's fast distance travelling, the loss of pressure could mean a new engine, or, at least, a costly repair.

Avoid this danger by fitting a new SMITHS oil pressure switch now!

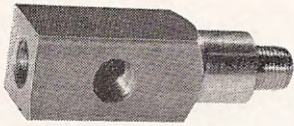


MAKE	MODEL	TYPE	MAKE	MODEL	TYPE
AUSTIN	A30, A40, A55, Lancer Series I LD1 & LD2 Vans, 10/12 cwt., 152 Series & Series IV, F.G. Cab, 30 cwt.	65M15	HILLMAN	Minx Mark VIII, VIIIA, O.H.V. Minx Series I to IIIB and Super Minx	65M15 65M5
		65M15	HOLDEN	48, 50, FJ to Eng. No. 173092 FJ from Eng. No. 173093, FE, FC, FB, EK EJ, EH & HD	65M15 65M14 65M19
CHRYSLER	Royal AP1, AP2 & AP3 Valiant AP5 (1963)	65M12 65M18	HUMBER	Hawk, All Models	65M3
COMMER	Cob Light Van, 8 cwt., Phase II to Phase VIIIA	65M3	MORRIS	Mini Minor	65M17 or 65M15
	4 to 12 ton F/C Diesel	65M15		Minor Ser. II, O.H.V. and "1000", Major Ser. I and Marshall	65M15
FORD	Consul, Zephyr Mark I	65M15		J2 Vans, A152 and Series IV F.G. Cab, 30 cwt.	65M15
	Consul, Zephyr Mark II	65M5		"1100"	65M17
	Zephyr Mark III	65M11	RENAULT	750 c.c.	65M15
	Anglia (Early Models) and Prefect	65M5	ROVER	60, 75 and 90—All Models Landrovers	65M6
	Anglia 105E and Cortina	65M11	STANDARD	"Eight" and "Ten"	65M5
	Falcon, Customline, Mainline and Fairlane	65M13	TRIUMPH	Herald, All Models	65M5
Thames Vans, 5-15 cwt.	65M5	VAUXHALL	All Models	65M15	
Thames Trader 30 cwt. to 5 ton	65M15				
HILLMAN	Husky, Minx Mark V to VIII, S.V.	65M3			

ADAPTORS & FITTINGS FOR GAUGES

Oil Pressure Gauges,

Temperature Gauges



ENGINE ADAPTOR
(3 way)
 $\frac{1}{8}$ " Gas M.F.F.
For all BMC and
other English vehicles

Part No. 53M6A-7-3



ENGINE ADAPTOR
(3 way)
 $\frac{1}{4}$ " Gas M.F. — $\frac{1}{8}$ " Gas F
For Holden, Falcon and
cars with $\frac{1}{4}$ " Gas Outlet.

Part No. 53M12-3-4

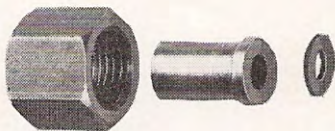


FLEXIBLE LINE
(Universal Application)
Part No. 53M3-13



COPPER LINE
(Universal Application)

Part No. 53M3-11 (4' long)
Part No. 53M-11/2 (6' long)



OIL GAUGE/PIPE
CONNECTOR
Suitable for all
Smiths oil pressure
gauges.

Part No. PG31

Engine Performance or Vacuum Gauges



Fitting kit comprising hose
and all adaptors.
Part No. 30EPG



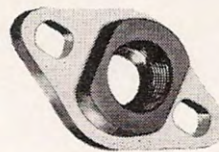
ENGINE ADAPTOR
 $\frac{1}{2}$ " Gas male x $\frac{5}{8}$ "
UNF female
To suit Holden

Part No. 53M3-4-3



ENGINE ADAPTOR
 $\frac{3}{8}$ " BSP male x $\frac{5}{8}$ "
UNF female
Part No. P76703

$\frac{5}{8}$ " UNF male x $\frac{5}{8}$ " UNF
female
(Mini Minor Cap Gauge
only)
Part No. P76703/1



ENGINE ADAPTOR PLATE
 $\frac{5}{8}$ " UNF Suit All
BMC Cars

Part No. H14D-5-1/1



RADIATOR HOSE ADAPTOR
For all cars without Engine
Block connections
Part No. 47M2-1

Lighting Attachments for Gauges



Internal light
attachment with 12v globe
for all arc scale gauges.

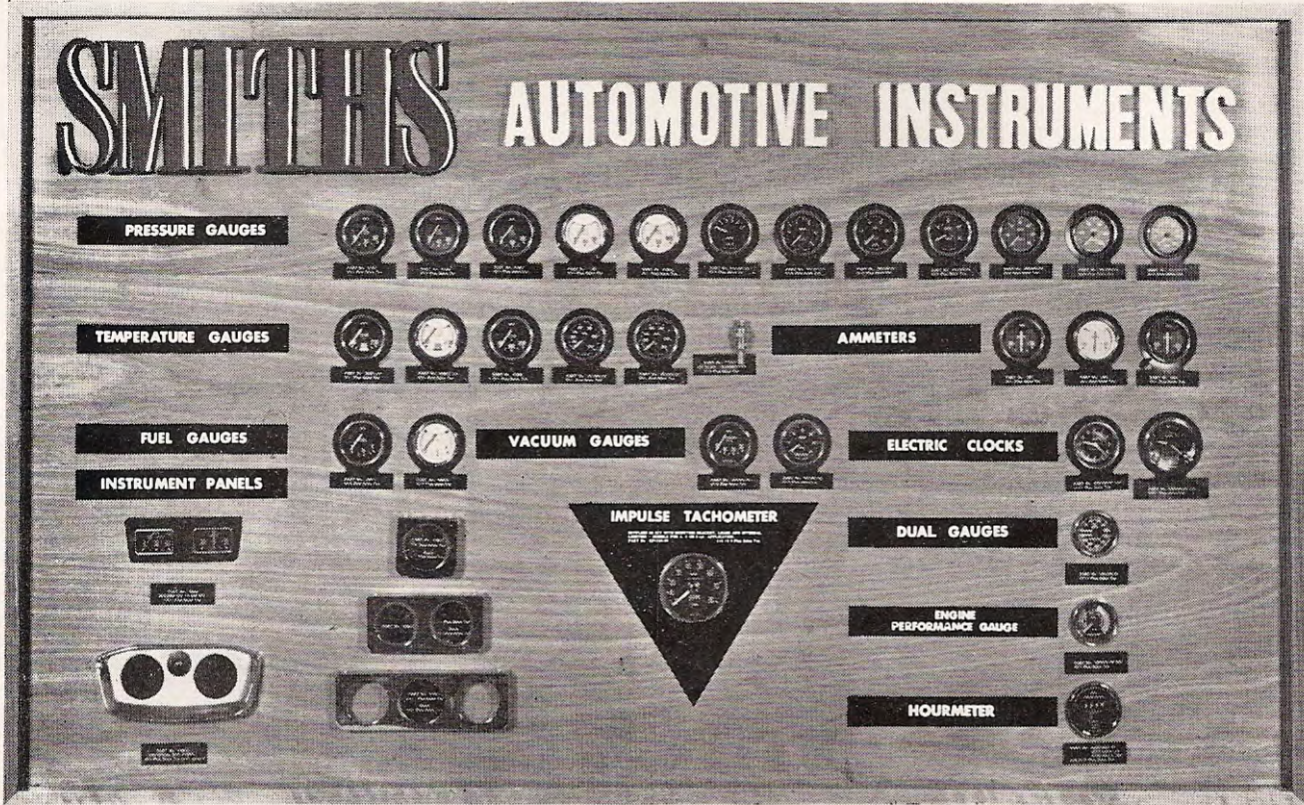
Part No. 50M8



External light
attachment with 12v globe
for all full scale gauges.

Part No. 47M11

The PROFIT Master of Instrument Displays



This is the latest Instrument Display produced by SMITHS for re-sellers of Gauges and Instruments. The Display Board (5' x 3') is the ultimate in Instrument Merchandising. Its polished timber finish provides a high class background for the 33 instruments on show. Each instrument is identified with its Part No. and List Price—a wonderful on-the-spot reference for both buyer and seller.

You reduce your selling time with no reference to catalogue/price list or unpacking for

customer selection. Your client can see the range available and pick the gauge to suit his car and . . . his pocket.

Just put it up and watch it sell. In no time, the Smiths Profit Master of Instruments Displays will become a silent salesman on your payroll.

Display Board is supplied free of charge with order for gauges included.

SMITHS

*Regd. Trade Mark of S. Smith & Sons (England) Limited

EQUIPMENT LISTING CARS & LIGHT VANS



DISTRIBUTED BY
KEEP BROS
AND WOOD PROPRIETARY LIMITED

AUSTIN

212 LATROBE STREET, MELBOURNE

MODEL

PHONE **34-0221** 20 LINES

CODE

VEH. MAKER
PART NO.

AUSTIN.
A30 - AS3

Panel complete
Speedometer
Fuel Gauge
Tank Unit
Thermostat
Oil Pressure Switch

X.76580/2
X.76580/6
X.76860/1
Y.76238
X.43570/28
X.80001/1/7

SN.4402/03
SN.4402/07
FG.6234/04
FT.5346/11
85025/74
PS.1227/07 or
65M15

3H.2140
3H.2338
3H.2661
3H.2191
11G.291
HYL.2445

A30 - AS4. 4 door
A2S4. 2 door

Panel complete
Speedometer
Fuel Gauge
Tank Unit
Thermostat
Oil Pressure Switch

51-118-403-00
51-118-403-02
X.80954/1
Y.8C952
X.43570/28
X.80001/1/7

SN.4700/00
SN.4700/02
FG.4230/00
FT.5300/32
85025/74
PS.1227/07 or
65M15

2A.421
2A.422
2A.428
2A.404
11G.291
HYL.2445

A30 - AV4 Van
AP4 Countryman

As above except for:-
Panel complete
Speedometer

51-118-403-04
51-118-403-06

SN.4700/04
SN.4700/06

2A.483
2A.484

A35 - AS5 Saloon

Panel complete
Speedometer
Fuel Gauge
Tank Unit
Oil Pressure Switch

Thermostat

SN.4700/12
SN.4700/18
FG.4230/00
FT.5300/32
PS.1227/07 or
65M15
85025/74

2A.9019
2A.9020
2A.428
2A.404
HYL.2445
11G.291

A40 - GS2 Devon
Saloon

Speedometer
Oil Gauge
Fuel Gauge
Tank Unit
Thermostat
Temperature Gauge *

US.1000
UP.1200
UF.1200
Y.65657
X.43570/5
UT.1201

SN.5502/01
PG.4600/00
FG.4631/01
FT.5300/59
85025/74
TG.4601/00

2H.4936
2H.4939
2H.4938
2H.4967
11G.291
3H.1011

from Jan., 1949

As above except for:-
Speedometer

US.1003

SN.5502/03

3H.570

A40 - GS3 1950 - 1952

As above except for:-
Speedometer

US.1007

SN.5502/06

3H.1156

A40 - Somerset
GS4 - Saloon
GD5 - Coupe

Speedometer

Oil Gauge
Fuel Gauge
Tank Unit
Temperature Gauge

Thermostat
Speedo Clock *

X.76392/21)
S.76392/26)
SN.5311/16)
UP.1407
UF.1409
Y.65657
UT.1506)
UT.1508)
X.43570/28
X.70906/29

SN.5351/16
PG.4602/04
FG.4633/01
FT.5300/59
TG.4603/05
85025/74
SN.7509/19

3H.2454
3H.2047
3H.2046
2H.4967
3H.2050
11G.291
3H.2452

* Denotes optional equipment

MODEL	EQUIPMENT	OLD CODE	NEW CODE	VEH. MAKER PART NO.
A50 - HS.5 Cambridge (Cont'd.)	Temperature Gauge (Sept. '54 - Sept. '55)	X.80536	TE.6206/01	1G.2740
	Temperature Gauge (Oct. '55 - Dec. '56)		TE.6206/00	11G.9075
	Tank Unit	Y.86088	FT.5300/16	11G.2063
	Temperature Transmitter	X.76207/1	TT.1200/01	3H.2836
	Oil Pressure Switch	X.80001/1/7	PS.1227/07 or 65M15	HYL.2445
	Thermostat	X.43570/28	85025/74	11G.291
	Electric Clock *	51-412-501-01	CE.3500/01	1G.2892
A50 - HS.5 Cambridge with Automatic Trans.	Panel	51-118-303-18	SS.1303/18	11G.9082
	Speedometer	51-118-303-20	SS.1303/20	11G.9084
	Fuel Gauge		FG.6239/00	11G.9074
	Temperature Gauge		TE.6206/00	11G.9075
	Tank Unit	Y.86088	FT.5300/16	11G.2063
	Temperature Transmitter	X.76207/1	TT.1200/01	3H.2836
	Gear Box (Speedo)		BG.2401/00	1H.3131
	Oil Pressure Switch	X.80001/1/7	PS.1227/07 or 65M15	HYL.2445
	Electric Clock *	51-412-501-01	CE.3500/01	1G.2892
A50-A55 - HV.6 Van	Panel (5.13 Speedo Gears)		SS.1303/11	11G.9076
HP.6 C'man	Panel (9.28 Speedo Gears)		SS.1303/45	1H.9041
HK.6 & HQ.6	Speedo (5.13 Speedo Gears)		SS.1303/15	11G.9078
Pick-Up	Speedo (9.28 Speedo Gears)		SS.1303/47	1H.9043
(Chassis with 5.50 x 16 tyres)	Temperature Gauge		TE.6206/00	11G.9075
	Tank Unit		FT.5300/69	2A.2017
	Temperature Transmitter	X.76207/1	TT.1200/01	3H.2836
	Oil Pressure Switch	X.80001/1/7	PS.1227/07 or 65M15	HYL.2445
	Thermostat	X.43570/28	85025/74	11G.291
	Electric Clock *	51-412-501-01	CE.3500/01	1G.2892
A50 - HV.6 Van HP.6 Countryman	As above except for:- Panel (5.13 Speedo Gears)		SS.1303/22	1H.9000
	HK.6 & HQ.6 Pick- Up	Speedo (5.13 Speedo Gears)	SS.1303/24	1H.9002
	(Chassis with 6.00 x 15 tyres)	Panel (9.28 Speedo Gears)	SS.1303/37	1H.9026
		Speedo (9.28 Speedo Gears)	SS.1303/39	1H.9028
A55 Cambridge - HS.6 with Standard Trans- mission	Panel Complete		SS.1303/37	1H.9026
	Speedometer		SS.1303/39	1H.9028
	Fuel Gauge		FG.6239/00	11G.9074
	* Denotes optional equipment			

AUSTIN (cont'd)

MODEL	EQUIPMENT	OLD CODE	NEW CODE	VEH.MAKER PART NO.	
A55 Cambridge - HS.6 with Standard Trans- mission (Cont'd.)	Temperature Gauge		TE.6206/00	11G.9075	
	Tank Unit	Y.86088	FT.5300/16	11G.2063	
	Temperature Transmitter	X.76207/1	TT.1200/01	3H.2836	
	Oil Pressure Switch	X.80001/1/7	PS.1227/07 or 65M15	HYL.2445	
	Thermostat	X.43570/28	85025/74	11G.291	
A55 Cambridge - HS.6 with Automatic Trans- mission	Electric Clock *	51-412-501-01	CE.3500/01	1G.2892	
	As above except for:- Panel complete		SS.1303/41	1H.9032	
	Speedometer		SS.1303/43	1H.9034	
A60 Cambridge	Gear Box (Speedo)		BG.2401/00	1H.3131	
	Speedometer		SN.6114/02	AYH.9066	
A60 Cambridge	Panel complete		IP.3210/02	1H.9083	
	Temperature Gauge		TC.6210/01	1H.9085	
	Oil Gauge		PL.6265/07	1H.9086	
	Fuel Gauge		FG.6241/07	1H.9087	
	Tank Unit		FT.5301/01 or 87M10	1H.2153	
	Temperature Transmitter		TT.3200/00	17H.575	
	Electric Clock *		CE.3505/00	1H.9088	
	Thermostat		85025/74	11G.291	
	Lancer 1500 Series 1	Panel complete		SN.9805/08	21G.9068
		Speedometer		SN.9805/10	21G.9069
Fuel Gauge			FG.6244/01	21G.9067	
Temperature Gauge			TC.6201/01	21G.9066	
Tank Unit			FT.5300/71	21G.2054	
Temperature Transmitter			TT.3200/00	17H.575	
Oil Pressure Switch		X.80001/1/7	PS.1227/07 or 65M15	HYL.2445	
Thermostat			85025/74	11G.291	
Lancer Series 11	Speedometer		84M1	AYH.9022	
	Panel complete		48M2	AYH.9023	
	Fuel Gauge		58M6	AYH.9024	
	Oil Gauge		61M1	AYH.9026	
	Temperature Gauge		94M3	AYH.9025	
	Tank Unit	FT.5300/77	87M7	BCA.4132	
	Temperature Transmitter		TT.3200/00	17H.575	
	Thermostat		85025/74	11G.291	
A70 Hampshire BS.2	Speedometer	X.70065	SN.5310/01	3H.570	
	Panel complete	X.70066	IP.3207/02	3H.777	
	Oil Gauge	X.53936/10	PG.6201/09	3H.769	
	Fuel Gauge	X.55790/11	FG.6237/09	3H.770	
	Tank Unit	Y.65657	FT.5300/59	2H.4967	
	Thermostat	X.30065/6	30065/4	2H.2242	
A70 Hampshire BQU.2 Pick-Up	As above except for:- Speedometer	X.70065/10	SN.5310/07		
	* Denotes optional equipment				

MODEL	EQUIPMENT	OLD CODE	NEW CODE	VEH.MAKER PART NO.
A70 Hereford BS.3 BW4 Countryman BD3 Convertible To Chassis No. 89502	Speedometer & Clock	X.70906/4	SN.7509/03	3H.1880
	Clock only	SK.58861/6		
	Oil Gauge	UP.1402	PG.4602/01	3H.1786
	Fuel Gauge	UF.1403	FG.4633/11	3H.1785
	Tank Unit	Y.76792	FT.5300/27	3H.1866
	Temperature Gauge Thermostat	UT.1503 X.30065/6	TG.4603/02 30065/4	3H.3050 2H.2242
From Chassis No. 89503	Speedometer & Clock	X.70906/10	SN.7509/12	3H.2044
	Clock only	SK.58861/6		
	Oil Gauge	UP.1407	PG.4602/04	3H.2047
	Fuel Gauge	UF.1409	FG.4633/01	3H.2046
	Tank Unit	Y.76792	FT.5300/27	3H.1866
	Temperature Gauge Thermostat	UT.1506 or UT.1508 X.30065/6	TG.4603/05 30065/4	3H.2500 2H.2242
A70 Hereford BK.3 Pick-Up	As above except for:- Speedometer & Clock	X.70906/20	SN.7509/14	
A90 Atlantic	Speedometer	X.70065/2	SN.5310/03	3H.987
	Oil Gauge	UP.1300	PG.4601/00	3H.990
	Fuel Gauge	UF.1302	FG.4632/04	3H.989
	Temperature Gauge	UT.1302	TG.4601/05	3H.991
	Thermostat	X.43570/5	85025/74	11G.291
	Rev. Ind. & Clock	X.70698	RN.7304/01	3H.986
	Clock only	SK.58861/4	CE.1108/02	
	Tank Unit	Y.65657	FT.5300/59	2H.4967
A90 "Six" Westminster	Speedometer	51-116-103-01	SN.6153/01 or SN.6103/01	1B.9015 1B.9009
	Panel complete	X.84108	IP.3201/00	1B.9013
	Fuel Gauge	X.86080/1	FG.6241/03	1B.9012
	Oil Gauge	51-516-665-00	PL.6265/00	1B.9011
	Temperature Gauge	X.80584	TE.6208/00	1B.2943
	Tank Unit	Y.86077	FT.5300/17	3H.2836
	Temperature Transmitter	X.76207/1	TT.1200/01	11G.291
	Thermostat	X.43570/28	85025/74	1G.2892
	Electric Clock *	51-412-501-01	CE.3500/01	
	A90 "Six" Westminster with Automatic Transmission	As above except for:- Speedometer	SN.6103/06	SN.6153/06
A95 Westminster BS.6	Speedometer	51-116-103-01	SN.6153/01 or SN.6103/01	1B.9014 1B.9009
	Panel complete	X.84108	IP.3201/00	1B.9013
	Fuel Gauge	X.86080/1	FG.6241/03	1B.9012
	Oil Gauge	51-516-665-00	PL.6265/00	
		* Denotes optional equipment		

AUSTIN (cont'd)

6.

MODEL	EQUIPMENT	OLD CODE	NEW CODE	VEH. MAKER PART NO.
A95 Westminster BS.6 (Cont.'d)	Temperature Gauge	X.80584	TE.6208/00	1B.9011
	Tank Unit		FT.5300/31	11B.2234
	Temperature Transmitter	X.76207/1	TT.1200/01	3H.2836
	Thermostat	X.43570/28	85025/74	11G.291
	Electric Clock *	51-412-501-01	CE.3500/01	1G.2892
A95 Westminster BS.6 with Overdrive and Automatic Transmission	As above except for:- Speedometer	SN.6103/06	SN.6153/06	1B.9037
A95 Countryman BW.6	Speedometer	SN.6103/10	SN.6153/10	
	Panel complete	X.84108	IP.3201/00	1B.9009
	Fuel Gauge	X.86080/1	FG.6241/03	
	Oil Gauge	51-516-665-00	PL.6265/00	1B.9012
	Temperature Gauge	X.80584	TE.6208/00	1B.9011
	Tank Unit		FT.5300/68	11B.2267
	Temperature Transmitter	X.76207/1	TT.1200/01	3H.2836
	Thermostat	X.43570/28	85025/74	11G.291
	Electric Clock *	51-412-501-01	CE.3500/01	1G.2892
A95 Countryman BW.6 with Automatic Trans- mission	As above except for:- Speedometer		SN.6153/06	1B.9037
A105 BS.7 with Over- drive or Automatic Transmission	Speedometer	SN.6103/06	SN.6153/06	1B.9037
	Panel complete	X.84108	IP.3201/00	1B.9009
	Fuel Gauge	X.86080/1	FG.6241/03	1B.9013
	Oil Gauge	51-516-665-00	PL.6265/00	1B.9012
	Temperature Gauge	X.80584	TE.6208/00	1B.9011
	Tank Unit		FT.5300/31	11B.2234
	Temperature Transmitter	X.76207/1	TT.1200/01	3H.2836
	Electric Clock	51-412-501-01	CE.3500/01	1G.2892
	Thermostat	X.43570/28	85025/74	11G.291
A125 Sheerline Limousine 25 H.P. Axle Ratio 4.27	Speedometer	US.132	SN.5501/14	3H.1584
	Dual Gauge	UD.104	GD.5400/14	2H.4727
	Fuel Gauge	UF.115	FG.5431/00	2H.4729
	Clock	UC.301	CE.2538/02	2H.4733
	Tank Unit	Y.64839	FT.5300/11	2H.4662
	Thermostat	X.30065/17	30065/34	2H.4343
A125 Sheerline Axle Ratio 4.45	As above except for:- Speedometer	US.108	SN.5501/05	2H.4725
Princess DS5. S.W.B. DM5. S.W.B.	Speedometer & Clock (Stand. Transmission)		SN.7513/03	1D.1958
	Speedometer & Clock (R.R. Auto. Trans.)		SN.7513/05	
	Clock only		CE.1104/01	
	Fuel Gauge		FG.4632/01	3H.3107
	Tank Unit		FT.5300/11	2H.4662
	*	Denotes optional equipment		

MODEL	EQUIPMENT	OLD CODE	NEW CODE	VEH.MAKER PART NO.
Princess DS5. S.W.B. DM5. S.W.B. (Cont.'d)	Oil Gauge Temperature Gauge Thermostat	30065/4	PG.4601/05 TG.4602/00	3H.3108 3H.3109 17H.169
Princess MK.III DM4. L.W.B. DH2 DS6. L.W.B. DA2	As above except for:- Speedometer & Clock		SN.7513/01	3H.3106
Princess MK.III DS6. & DM4. L.W.B. with R.R. Auto Trans.	As above except for:- Speedometer & Clock		SN.7513/07	1D.9031
A.135 Princess MK. IV DS7 & DM7	Speedometer & Clock Speedometer only Clock only Panel complete Fuel Gauge Oil Gauge Temperature Gauge Tank Unit Thermostat		SN.7522/00 SN.7522/02 CE.1104/00 IP.4305/00 FG.6240/03 PL.6204/02 TL.6204/00 FT.5300/03 85025/74	1D.9040 1D.9046 17H.1054 17H.1052 17H.1053 1D.2047 11G.291
Princess 3 Litre	Speedometer Speedometer (from Feb., 1961) Panel complete Fuel Gauge Temperature Gauge Oil Gauge Tank Unit Temperature Transmitter Electric Clock Thermostat Gear Box (Speedo)		SN.6316/00 SN.6316/02 IP.4310/00 FG.6240/28 TC.6217/00 PL.6204/03 FT.5300/78 TT.3800/00 CE.3501/11 85025/70 BG.2401/00	SL.42 SL.181 5L.44 5L.45 5L.46 5L.47 BCA.4199 13H.136 5L.41 13H.310 1H.3131
A.135 Princess MK.III DM4 & DS6. L.W.B. DH2 & DA2	Speedometer & Clock Speedometer only Clock only Fuel Gauge Tank Unit Oil Gauge Temperature Gauge Thermostat	30065/41	SN.7532/00 SN.7532/02 CE.1113/00 FG.4632/06 FT.5300/11 PL.4604/00 TL.4601/00	5L.154 5L.162 5L.166 5L.158 2H.4662 5L.160 17H.169
A.135 Princess MK.III DM4 & DS6. L.W.B. with R.R. Auto. Trans.	As above except for:- Speedometer & Clock Speedometer only		SN.7532/04 SN.7532/06	5L.156 5L.164
Princess 3 Litre MK.II (Vanden Plas)	Speedometer Gear Box (Speedo) Panel complete Fuel Gauge		SN.6316/00 BG.2401/00 IP.4310/02 FG.6240/28	5L.42 1H.3131 5L.257 5L.45

MODEL	EQUIPMENT	OLD CODE	NEW CODE	VEH.MAKER PART NO.
Princess 3 Litre MK.II (Vanden Plas) (Cont'd)	Oil Gauge		PL.6204/03	5L.47
	Temperature Gauge		TC.6217/02	5L.258
	Tank Unit		FT.5300/78	BCA.4199
	Temperature Transmitter		TT.3800/00	13H.136
	Electric Clock		CE.3501/11	5L.41
	Thermostat		85025/70	13H.310
Civilian Champ	Speedometer	X.56005/29	SN.3303/19	3H.2977
	Panel complete	X.56007/30	IP.3200/25	3H.2975
	Oil Gauge	X.53936/15	PG.6201/14	3H.1475
	Fuel Gauge	X.55790/27	FG.6237/15	3H.2976
	Tank Unit	Y.80825	FT.5346/26	3H.2941
	Temperature Gauge	X.80530	TE.2500/04	3H.2979
	Temperature Transmitter	X.76207/1	TT.1200/01	3H.2836
	Thermostat	X.43570/28	85025/74	11G.291
4 x 4 $\frac{1}{2}$ ton Gipsy	Speedometer		SN.3303/32	
	Speedometer (Trip) *		SN.5326/00 or SN.5329/00	
	Panel complete	X.56007/12	IP.3200/08	
	Fuel Gauge	X.55790/19	FG.6237/11	
	Oil Gauge	X.53936/14	PG.6201/13	
	Tank Unit		FT.5346/23	
	Thermostat		85025/74	
Freeway	Speedometer		84M3-1	AYB.9000
	Panel Complete		48M6-1	AYB.9001
	Fuel Gauge		58M14-1	HYL.2269
	Temperature Gauge		92M6-1	HYL.2270
	Oil Gauge		61M8-1	HYL.2271
	Tank Unit. Saloon		87M10	1H.2153
	Tank Unit. S/Wagon		87M13	BCA.4416
Electric Clock *		CE.3112/00M	AYB.9027	
	*	Denotes optional equipment		

MODEL	EQUIPMENT	OLD CODE	NEW CODE	VEH. MAKER PART NO.
"100" Jan. 1953 - Dec. 1953	Speedometer	51-118-508-01	SN.6105/00	3H.3061
	Rev. Indicator	51-118-104-01	RN.2301/00	3H.3062
	Dual Gauge	42638/35	GD.1500/30	1B.2853
	Fuel Gauge	49422/219	FG.2530/19	3H.3064
	Tank Unit	80875	FT.5300/15	1B.2736
	Angle Drive	80630	BG.2402/01	1B.3644
	Thermostat	43570/5 or /28	85025/74	11G.291
	From 1954	As above except for:- Dual Gauge	42638/38	GD.1500/29
"100" speed Conversion Set From January, 1954	Speedometer	51-118-508-03	SN.6106/03	
	Speedometer (from May, 1955)		SN.6105/02	
	Rev. Indicator	51-118-104-01	RN.2301/00	3H.3062
	Angle Drive	80630	BG.2402/01	1B.3644
	Fuel Gauge	49422/225	FG.2530/43	
	Tank Unit	80997	FT.5300/35	
	Dual Gauge	42638/38	GD.1500/29	1B.2853
	Thermostat	43570/5 or /28	85025/74	11G.291
AH.100S Oct. 1954 - April, 1955	Speedometer	51-118-508-05	SN.6106/05	
	Rev. Indicator	51-118-104-01	RN.2301/00	3H.3062
	Angle Drive	80630	BG.2402/01	1B.3644
	Fuel Gauge	49422/237	FG.2530/45	
	Tank Unit	86082	FT.5300/21	
	Dual Gauge	42638/38	GD.1500/29	1B.2853
	Oil Thermometer	51-311-503-05	TG.1503/05	
	Thermostat	43570/28	85025/74	11G.291
"100" (6 cylinder) BN4 & BN5	Speedometer		SN.6105/06	1B.9059
	Speedometer (Overdrive)		SN.6105/08 or SN.6155/08	1B.9057
	Gear Box (Speedo)		BG.2401/00	1H.3131
	Fuel Gauge		FG.2530/03	1B.9061
	Tank Unit		FT.5300/15	1B.2736
	Dual Gauge		GD.1502/00	1B.9063
	Rev. Indicator		RN.2301/01	1B.9062
	Thermostat		85025/74	11G.291
"100" (6 cylinder) BN6	As above except for:- Dual Gauge		GD.1502/05	BHA.4113
	Rev. Indicator		RN.2301/03 or RN.2351/03	1B.9188
BN7 July, 1959 - 1961 3,000MK.II 1961	As above except for:- Speedometer		SN.6155/19	BHA.4124
	Speedometer (Overdrive)		SN.6155/21	BHA.4126
Sprite	Speedometer		SN.6155/10	2A.9067
	Fuel Gauge		FG.2530/31	2A.9069
	Tank Unit		FT.5300/32	2A.404
	Dual Gauge		GD.1502/01	2A.9070

MODEL	EQUIPMENT	OLD CODE	NEW CODE	VEH.MAKER PART NO.
Sprite (Cont.'d)	Rev. Indicator *		RN.2351/02	2A.9068
	Gear Box *	BG.4302/00	BG.4302/50	13H.632
Super Sprite	Speedometer		SN.6155/23	Q.2318
	Fuel Gauge		FG.2530/47	Q.2320
	Tank Unit		FT.5300/32	H.2323
	Dual Gauge		GD.1502/04	Q.2321
	Rev. Indicator		RN.2351/05	Q.2322
	Gear Box	BG.4302/00	BG.4302/50	13H.632
Sprite MK.II	Speedometer		SN.6126/00	BHA.4210
	Fuel Gauge		FG.2530/64	
	Tank Unit		FT.5301/06	BHA.4218
	Dual Gauge		GD.1502/06	BHA.4216
	Thermostat		85025/74	11G.291
	Rev. Indicator *		RN.2313/00	BHA.4213
	Gear Box *	BG.4302/00	BG.4302/50	13H.632
Sprite MK.IIA	Speedometer		SN.6135/00	BHA.4372
	Fuel Gauge		FG.2530/70	BHA.4381
	Tank Unit		FT.5301/06	21A.168
	Rev. Indicator		RVI.2401/00A	BHA.4380
	Dual Gauge		GD.1501/12	BHA.4382
Sprite MK.III	As above except for:-			
	Speedometer		SN.6142/00	
	Dual Gauge		GD.1501/14	
3000 BJ8	Speedometer		SN.6125/20	
	Speedometer (Overdrive)		SN.6125/22	
	Gear Box		BG.2401/00	
	Fuel Gauge		FG.2333/10	
	Tank Unit		FT.5346/52	
	Dual Gauge		GD.1301/02	
	Rev. Indicator		RVI.2602/00	
		*	Denotes optional equipment	

MODEL	EQUIPMENT	OLD CODE	NEW CODE	VEH.MAKER PART NO.
P.25	Speedometer	51-121-801-01	SS.1801/01	
Plymouth, Fargo De Soto and Dodge	Ammeter	UA.1403		A.1359923
	Fuel Gauge	UF.1417	FG.4633/07	A.1359924
	Oil Gauge	UP.1409	PG.4602/06	A.1465927
	Tank Unit	FT.5320/00	87M4	A.1466367
	Temperature Gauge	UT.1514	TG.4603/10	
Royal AP.1	Speedometer		83M1	A.1468256
Jan. 1957	Fuel Gauge		58M1	A.1468257
Oct. 1958	Oil Pressure Switch	PS.1227/10 or X.80001/1/10	65M2	A.1469515
	Tank Unit	FT.5320/00	87M4	A.1465927
	Temp. Gauge 6 cylinder	92M1)	92M10	A.2286192
	Temp. Gauge 8 cylinder	92M2)		
Royal AP.2	Speedometer		83M3	A.1894347
Nov. 1958	Fuel Gauge		58M7	A.1894345
June 1960	Oil Pressure Switch	PS.1227/10 or X.80001/1/10	65M2	A.1469515
	Tank Unit		87M4	A.1465927
	Temp. Gauge 6 cylinder	92M3)	92M11	A.2286193
	Temp. Gauge 8 cylinder	92M4)		
Royal AP.3	Oil Pressure Switch		65M12	A.1898193
July, 1960	Tank Unit		87M11	A.1896748
Dec. 1960				
Royal AP.3	Tank Unit		87M11	A.1896748
Jan. 1961				
AP.5 Valiant	Oil Pressure Switch		65M18	A.1779985
AP.6 Valiant	Speedometer		84M11-1	2595181
	Fuel Level Indicator		58M20-1	2595184
	Temperature Indicator		94M20-1	2595182
	Instrument Voltage Regulator		62263	2597048
	Ammeter		1M13-1	2595183
	Fuel Tank Unit		89M2-1	2595516
	Temperature Transmitter		97M6-1	2426458
	Oil Pressure Switch		65M18	2595056
	Speedometer Drive Assembly		33M6-1/62	2290463

MODEL	EQUIPMENT	OLD CODE	NEW CODE	VEH. MAKER PART NO.
8 cwt. Van Mark II from 1948	Speedometer	X.64940	SN.3311/00	P.44097
	Fuel Gauge	UF.450		P.44098A
	Tank Unit	Y.55847	FT.5300/57	P.66106
	Oil Pressure Switch	X.64239/5/1) PS.1224/05)	65M3	P.44950
8 cwt. Van Mark III & IV from 1949	Speedometer	X.70060	SN.3303/50	P.44378
	Panel	X.70059	IP.2400/00	P.44379
	Fuel Gauge	UF.1300	FG.4632/02	K.20128
	Tank Unit	Y.70198	FT.5300/46	P.44349
	Oil Pressure Switch	X.64239/5/1) PS.1224/05)	65M3	P.44950
8 cwt. Van Mark V from 1952	As above except for:- Speedometer	X.70060/7	SN.3303/52	P.44737
	8 cwt. Van Mark V1 1953	Speedometer	X.80425/2	SN.3306/01
Panel		X.80432		P.102176
Fuel Gauge		UF.1307	FG.4632/00	P.44959
Temperature Gauge		UT.2300	TL.4662/01	P.44960
Tank Unit		Y.70198	FT.5300/46	P.44349
Oil Pressure Switch		X.80001/2/5) PS.1224/05)	65M3	P.44950
Oil Gauge *		UP.2300	PL.4662/00	P.45010
Electric Clock *	UC.4002	CE.2503/01	P.45009	
8 cwt. Van Mark VII 1953	As above except for:- Panel	X.80432/2		P.105833A
	1954-1955	As above except for:- Panel	X.80432/5	
Mark VIIa (S.V. Engine) 1953-1958		Speedometer	51-113-306-03	SN.3306/03
	Panel	X.80432/3	IM.5801/02	P.106311A
	Fuel Gauge	UF.1311	FG.4631/00	P.45211
	Temperature Gauge	UT.1800	TE.4602/00	P.45158
	Temperature Transmitter	X.76207	TT.1200/00	P.45152
	Tank Unit	Y.70198	FT.5300/46	P.44349
	Oil Pressure Switch	X.80001/2/5) PS.1224/05)	65M3	P.44950
	Speedometer (trip) *	51-115-313-02	SN.5313/02	
	Oil Gauge *	UP.2301	PL.4663/00	P.45214
	Electric Clock *	UC.4003	CE.2503/02	P.45215
8A Express Delivery Van with Hypoid Axle	As above except for:- Speedometer		SN.3356/05	1208110
	Thermostat		85035/80	
	Oil Pressure Switch	PS.1227/05	65M5	P.45675
		* Denotes optional equipment		

MODEL	EQUIPMENT	OLD CODE	NEW CODE	VEH.MAKER PART NO.
Cob Oct. 1954 - Dec. 1957	Panel	51-118-402-11	SN.4402/11	P.45746
	Speedometer	51-118-402-13	SN.4402/13 or SN.4472/13	K.24022
	Fuel Gauge	76860/4	FG.6234/07	K.24054
	Tank Unit	80033	FT.5300/33	P.44962A
	Oil Pressure Switch	80001/2/5	65M3	P.44950
	Electric Clock *	64998/1	CE.2159/03	P.45083
	Temperature Gauge F.*	80500/2	TL.2561/02	P.45084
Cob Series 1	As above except for:- Temperature Gauge Kit *		KP.5502/00	
	Temperature Gauge *		TC.4302/00	
	Temperature Transmitter*		TT.3200/00	
Cob Series II	As above except for:- Panel		SN.4411/00	1203212
	Speedometer		SN.4411/02	
	Fuel Gauge		FG.6234/11	
	Tank Unit		FT.5301/08	1203471
	Thermostat		85035/80	P.11537
Cob Series II with Hypoid Axle Oct. 1960 - Jan. 1962	As above except for:- Panel		SN.4411/10	1208068
	Speedometer		SN.4411/20	
	Panel) Low Com- Speedometer) pression Model		SN.4411/18	P.1208074
			SN.4411/27	
Cob Series II with Hypoid Axle Feb. 1962	As above except for:- Temperature Gauge Kit		KP.5502/04	121689
	Temperature Gauge		TC.4302/08	
	Temperature Transmitter		TT.3200/00	
		*	Denotes optional equipment	

MODEL	EQUIPMENT	OLD CODE	NEW CODE	VEH.MAKER PART NO.
1961 1800-2100	Thermostat		85035/80	

MODEL	EQUIPMENT	OLD CODE	NEW CODE	VEH. MAKER PART NO.
Husky Mark I 1954 - Dec. 1957	Panel	51-118-402-11	SN.4402/11	P.45746
	Speedometer	51-118-402-13	SN.4402/13 or SN.4472/13	K.24022
	Fuel Gauge	X.76860/4	FG.6234/07	K.24054
	Tank Unit	Y.80033	FT.5300/33	P.44962A
	Oil Pressure Switch	X.80001/2/5) PS.1224/05)	65M3	P.44950
	Electric Clock *	SK.64998/1	CE.2159/03	P.45083
	Temperature Gauge *	X.80500/2	TL.2561/02	P.45084
Husky Series I Jan. 1958	Panel		SN.4402/11	P.45746
	Speedometer		SN.4402/13 or SN.4472/13	K.24022
	Fuel Gauge		FG.6234/07	K.24054
	Tank Unit		FT.5300/33	P.44962A
	Electric Clock *		CE.2159/03	P.45083
	Temperature Gauge *		TC.4302/00	
	Transmitter *		TT.3200/00	P.46245
	Thermostat		X.85035/70	
Chassis A.2800000 also Chassis A.2800001				
Husky Series II	Panel		SN.4411/00	1203212
	Speedometer		SN.4411/02	
	Fuel Gauge		FG.6234/11	
	Tank Unit		FT.5301/08	1203471
	Thermostat		X.85035/80	P.11537
	Temperature Gauge *		TC.4302/00	
	Transmitter *		TT.3200/00	P.46245
	Electric Clock		CE.2159/03	P.45083
Husky Series II (with hypoid axle)	Panel	SN.4411/10	SN.4411/29	1208068
	Speedometer	SN.4411/20	SN.4411/31	
	Fuel Gauge		FG.6234/11	
	Panel) Low Com-		SN.4411/18	1208074
	Speedometer) pression		SN.4411/27	
	Fuel) Models		FG.6234/11	
	Tank Unit		FT.5301/08	1203471
	Thermostat		X.85035/80	P.11537
	Electric Clock *		CE.2159/03	P.45083
Minx Mark V from 1951	Speedometer	X.70060/7	SN.3303/52	P.44737
	Panel	X.70059	IP.2400/00	P.44379/B
	Fuel Gauge	UF.1300	FG.4632/02	K.20128
	Tank Unit	Y.70198	FT.5300/46	P.44349
	Oil Pressure Switch	80001/2/5) Y.64239/4/5) PS.1224/05)	65M3	P.44950
	Speedometer (trip) *	X.70765/4	SN.5314/03	
	Oil Gauge *	UP.1305	PG.4601/04	
	Temperature Gauge *	UT.1305	TG.4601/08	K.44701A
	Electric Clock *	UC.4000	CE.2503/03	P.44444
	*	Denotes optional equipment		

HILLMAN (cont'd)

MODEL	EQUIPMENT	OLD CODE	NEW CODE	VEH. MAKER PART NO.
Minx Mark VI from 1953	Speedometer	X.80425/2	SN.3306/01	P.44958
	Panel	X.80432		P.102176
	Temperature Gauge	UT.2300	TL.4662/01	P.44960
	Fuel Gauge	UF.1307	FG.4632/00	P.44959
	Tank Unit	Y.70198	FT.5300/46	P.44349
	Oil Pressure Switch	X.80001/2/5) PS/1224/05)	65M3	P.44950
	Speedo (trip) *	X.80434	SN.5313/00	
	Oil Gauge	UP.2300	PL.4662/00	P.45010
	Electric Clock	UC.4002	CE.2503/01	P.45009
	Minx Mark VII 1953-1954	Speedometer	X.80425/2	SN.3306/01
Panel		X.80432/1 & /2		P.105553 & P.105833A
Fuel Gauge		UF.1307	FG.4632/00	P.44959
Temperature Gauge		UT.2300 & /1	TL.4662/01	P.44960
Tank Unit		X.70198	FT.5300/46	P.44349
Oil Pressure Switch		X.80001/2/5) PS.1224/05)	65M3	P.44950
Thermostat		43570/17	85025/70	
Speedometer (trip) *		80434	SN.5313/00	
Oil Gauge *		UP.2300 & /1	PL.4662/00	P.45010
Electric Clock *		UC.4002	CE2503/01	P.45009
Minx Mark VII 1954 (May - Sept.)	As above except for:- Panel	80432/5		P.106786
Minx Mark VIII De Luxe Saloon Convertible Californian (O.H.V.) (Oct. 1954 - Sept. 1955)	Speedometer (N/T)	51-113-306-03	SN.3306/03	P.45209
	Speedometer (T)	51-115-313-02	SN.5313/02	
	Panel	80432/3	IM5801/02	P.106311A
	Fuel Gauge	UF.1311	FG.4631/00	P.45211
	Temperature Gauge	UT.1800	TE.4602/00	P.45158
	Transmitter	76207	TT.1200/00	P.45152
	Tank Unit	70198	FT.5300/46	P.44349
	Oil Pressure Switch	80001/1/7 PS.1227/07	65M4	
	Oil Gauge *	UP.2301	PL.4663/00	P.45214
	Electric Clock *	UC.4003	CE.2503/02	P.45215
October, 1955	As above except for:- Oil Pressure Switch	80001/1/5) PS.1224/05)	65M3	
Minx Mark VIII Special Saloon & Estate Car (S.U. Engine)	As De Luxe except for:- Panel	80432/4		P.106779
Minx Series I MK.I De Luxe & Standard May, 1956	Speedometer	51-113-309-00	SN.3309/00 or SN.3359/00	P.45440
	Panel (L.H.M.)	84115	IP.2100/00	P.45442
	Fuel Gauge	86105/1	FG.6232/00	K.26166
		* Denotes optional	equipment	

MODEL	EQUIPMENT	OLD CODE	NEW CODE	VEH. MAKER PART NO.
Minx Series I MK.I De Luxe & Standard May, 1956 (Cont.'d)	Panel (R.H.M.)	X.84114	IP.2100/01	P.45443
	Temperature Gauge	80588	TE.6201/00	K.26164
	Transmitter	76207	TT.1200/00	P.45152
	Tank Unit	80084/2	FT.3315/00	P.45447
	Oil Pressure Switch	80001/1/5) PS.1227/05)	65M5	P.45675
	Oil Gauge *	80587	PL.6202/00	P.45445
	Electric Clock *	CE.2194/07	CE.2194/09	1046489A
Minx Series II Special Saloon August, 1957	Panel	51-118-402/11	SN.4402/11	P.45746
	Speedometer	51-118-402/13	SN.4402/13 or SN.4472/13	K.24022
	Fuel Gauge	76860/4	FG.6234/07	K.24054
	Tank Unit	80084/2	FT.3315/00	P.45447
	Oil Pressure Switch	80001/1/5) PS.1227/05)	65M5	P.45675
	Electric Clock *	SK.64998/1	CE.2159/03	P.45083
	Temperature Gauge *	80500/2	TL.2561/02	P.45084
Minx Series II De Luxe Saloon August, 1957	Speedometer	51-113-309-00	SN.3309/00	P.45440
	Panel (L.H.S.)	84115	IP.2100/00	P.45442
	Fuel Gauge	86105/1	FG.6232/00	K.26166
	Panel (R.H.S.)	84114	IP.2100/01	P.45443
	Temperature Gauge	80588	TE.6201/00	K.26164
	Transmitter	76207	TT.1200/00	P.45152
	Oil Pressure Switch	80001/1/5) PS.1227/05)	65M5	P.45675
	Oil Gauge *	80587	PL.6202/00	P.45445
Electric Clock *	CE.2194/07	CE.2194/09	P.45578A	
Minx Series III Special Saloon Sept. 1958	Panel		SN.4402/11	P.45746
	Speedometer		SN.4402/13 or SN.4472/13	K.24022
	Fuel Gauge		FG.6234/07	K.24054
	Tank Unit		FT.5300/33	P.44962A
	Electric Clock *		CE.2159/03	P.45083
	Temperature Gauge *		TL.2561/02	P.45084
	Thermostat		X.85035/70	
Minx Series III De Luxe September, 1958	Speedometer		SN.3313/00	P.46367
	Panel		IP.3201/09	P.46369
	Temperature Gauge		TC.6208/00	
	Temperature Transmitter		TT.4800/00	P.46371
	Fuel Gauge		FG.2331/01	P.46370
	Tank Unit		FT.3315/00	P.45447
	Thermostat		85035/80	P.11537
	Oil Gauge *		PL.6267/00	1046506
Electric Clock *		CE.2194/09	1046489A	
Minx Series IIIa Special Saloon September, 1959	Panel		SN.4411/00	1203212
	Speedometer		SN.4411/02	5037799
		*	Denotes optional equipment	

HILLMAN (cont'd)

MODEL	EQUIPMENT	OLD CODE	NEW CODE	VEH. MAKER PART NO.
Minx Series IIIa Special Saloon September, 1959 (Cont'd)	Fuel Gauge Panel } Automatic Speedometer } Trans- Fuel Gauge } mission Tank Unit Thermostat Electric Clock *		FG.6234/11 SN.4411/06 SN.4411/08 FG.6234/11 FT.3316/00 85035/80 CE.2159/03	1203472 P.11537 P.45083
Minx Series IIIa De Luxe September, 1959	Speedometer Speedometer (Automatic Transmission) Panel Temperature Gauge Temperature Transmitter Fuel Gauge Tank Unit Thermostat Oil Gauge * Electric Clock *		SN.3313/00 SN.3313/02 IP.3201/16 TC.6216/00 TT.4800/00 FG.2331/07 FT.3316/00 85035/80 PL.6267/00 CE.2194/09	P.46367 1046529 1203219 5037626 P.46371 1203218 1203472 P.11537 1046506 1046489A
Hillman Minx Series IIIb. Special & De Luxe (with hypoid axle)	Speedometer Panel Temperature Gauge Temperature Transmitter Fuel Gauge Tank Unit Thermostat Oil Gauge * Electric Clock *		SN.3313/10 IP.3201/16 TC.6216/00 TT.4800/00 FG.2331/07 FT.3316/00 85035/80 PL.6267/00 CE.2194/09	1214278 1203219 5037626 P.46371 1203218 1203472 P.11537 1046506 1046489A
Minx IIIb	New Speedometer (Auto.Transmission)	SN.3313/12		
Minx IIIc Saloon, Coupe & Estate Car. August, 1961	Speedometer (Standard Transmission) Speedometer (Easidrive II) Panel Temperature Gauge Temperature Transmitter Fuel Gauge Tank Unit Oil Gauge * Electric Clock * Thermostat *		SN.5333/02 SN.5333/04 IP.3201/16 TC.6216/00 TT.4800/00 FG.2331/07 FT.3316/00 PL.6267/00 CE.2194/09 85035/80	1215318 1215320 1203219 5037626 P.46371 1203218 1203472 1046506 1046489A P.11537
Minx De Luxe Saloon IIIc July, 1961	Speedometer (Overdrive) Speedometer (Easidrive) Panel (Overdrive) Temperature Gauge Panel		SN.6123/16 SN.6123/18 IP.2100/12 TE.6213/00 IP.2100/13	1215322 1215324 1214460 5037951 1214461
		*Denotes optional	equipment	

MODEL	EQUIPMENT	OLD CODE	NEW CODE	VEH.MAKER PART NO.
Minx De Luxe Saloon IIIc July, 1961 (Cont.'d)	Fuel Gauge		FG.6232/05	5037950
	Panel (Easidrive)		IP.2100/14	1214991
	Temperature Gauge		TE.6213/00	5037951
	Temperature Transmitter		TT.1800/00	1800213
	Thermostat		85035/80	P.11537
	Tank Unit		FT.3346/00	1203408
Minx V	Speedometer		SN.5336/00 or	1218052
			SN.5336/05	1219690
	Panel		IP.3201/39	1218213
	Temperature Gauge		BT.6101/01	
	Fuel Gauge		BF.2202/04	1217916
	Tank Unit		TF.1002/034	1217857
	Temperature Transmitter		TT.4802/00	1205552
	Voltage Regulator		BR.1300/01	1205576
	Electric Clock *		CE.2194/14	1219419
	Oil Gauge *		PL.6267/01	1215359
	Super Minx MK.I Saloon & Coupe Oct. 1961 - Jan. 1962	Speedometer (Standard Transmission)		SN.5333/08 or
			SN.5333/18	1215351
Speedometer (Easidrive)			SN.5333/15 or	
			SN.5333/20	1216746
Panel			IP.3201/20	1215357
Temperature Gauge			BT.6101/00	5038960
Fuel Gauge			BF.2202/00	1215357
Tank Unit			TF.1002/052	1205559
Temperature Transmitter			TT.4802/00	1205552
Voltage Regulator			BR.1300/01	1205576
Thermostat			85035/80	1207116
Oil Gauge *			PL.6267/01	1215359
Electric Clock *			CE.2194/09	1046489A
Super Minx MK.I Estate Car		As above except for:-		
	Fuel Gauge		BF.2202/02	1216651
	Tank Unit		TF.9002/008	1216377A
Super Minx MK.I Saloon & Coupe February, 1962	As Oct. 1961 - Jan. 1962 except for:-			
	Speedometer (Standard Transmission)		SN.5333/18 or	
	Speedometer (Easidrive)		SN.5333/18A SN.5333/20	1216744 1216746
Super Minx MK.II	Speedometer		SN.5333/18A	1216744
	Panel		IP.3201/39	1218213
	Temperature Gauge		BT.6101/01	
	Fuel Gauge		BF.2202/03	1216875
	Tank Unit (Saloon)		TFS.3006/500	1216722
	Tank Unit (Estate Car)		TF.9002/008	1216377A
	Temperature Transmitter		TT.4802/00	1205552
	Voltage Regulator		BR.1300/01	1205576
	Oil Gauge *		PL.6267/01	1215359
	Electric Clock *		CE.2194/09	1046489
		*	Denotes optional equipment	

MODEL	EQUIPMENT	OLD CODE	NEW CODE	VEH.MAKER PART NO.
From Feb. 1963	As above except for:- Fuel Gauge		BF.2202/05	1218280
IMP	Panel Speedometer Fuel Gauge Voltage Regulator Tank Unit Temperature Switch		SN.9818/00	7105010
			SN.9818/02	
			BF.8106/00	
			BR.1300/01	1205576
			TF.9002/013	7102187A
			TS.2300/2/223	7105069

MODEL	EQUIPMENT	OLD CODE	NEW CODE	VEH.MAKER PART NO.
Hawk Mark IV from 1951	Speedometer Fuel Gauge Tank Unit Temperature Gauge Electric Clock Oil Switch	S.519 PG.131 TA.126 RT.58 C.120 Z.126 PS.1224/05)	SS.2101/05 FG.4632/03 FT.5300/10 TG.4601/07 CE.2502/01 65M3	P.44364 K.20368 P.44367 P.44446 P.44950
from 1952	As above except for:- Speedometer	S.571	SS.2101/05	P.44364
Hawk Mark V 1953 1st 2,500 vehicles	Speedometer Fuel Gauge Tank Unit Temperature Gauge Electric Clock Oil Switch	S.603 PG.155 TA.126 RT.68 C.136 Z.137 PS.1224/05)	SS.2301/01 FG.4633/00 FT.5300/10 TG.4603/08 CE.2541/00 65M3	P.44899 K.22531 P.44367 K.22532 P.44993 P.44950
Hawk Mark V after 2,500 Nov. 1953	As above except for:- Electric Clock	C.139	CE.2502/04	P.44993
Hawk Mark V Dec. 1953 - Apr. 1954	As above except for:- Electric Clock	C.136	CE.2541/00	P.44993
Hawk Mark V May, 1954 - Sept. 1954	As above except for:- Speedometer	51-122-301-04	SS.2301/04	P.44899
Hawk Mark VI 1954-1946	Speedometer Fuel Gauge Tank Unit Temperature Gauge Temperature Transmitter Electric Clock Oil Switch	51-122-301-04 PG.155 TA.126 UT.1900 X.76207 C.136 Z.137 PS.1224/05)	SS.2301/04 FG.4633/00 FT.5300/10 TE.4603/00 TT.1200/00 CE.2541/00 65M3	P.44899 K.22531 P.44367 K.24111 P.45152 P.44903 P.44950
Hawk Mark VIa March, 1956	As above			
New Hawk 4/6-4 Series 1 May, 1957 - May, 1958	Electric Clock	CE.2194/07	CE.2194/09	P.45578
June, 1958	Electric Clock Thermostat	CE.2194/07	CE.2194/09 X.85035/80	P.45578 P.11537
Hawk Series II	Speedometer (Standard Transmission) Speedometer (Borg- Warner Transmission)		SN.5354/07 SN.5354/09	1207742 1208040

MODEL	EQUIPMENT	OLD CODE	NEW CODE	VEH. MAKER PART NO.
Hawk Series II (Cont.'d)	Panel		IP.3201/17	1207893
	Temperature Gauge		TC.6216/00	
	Oil Gauge		PL.6267/00	1046506
	Fuel Gauge		FG.2331/11	1205387
	Tank Unit		FT.3332/00	P.46243
	Temperature Transmitter		TT.4800/00	P.46371
	Electric Clock		CE.3116/02	1205247
Hawk Series III	Speedometer (Standard Transmission)		SN.5354/18	1215662
	Speedometer (Automatic Transmission)		SN.5354/20	1215668
	Panel		IP.3201/29	1215231
	Oil Gauge		PL.6267/01	1215359
	Temperature Gauge		BT.6101/00	5038960
	Tank Unit		TFS.1016/046	1216326
	Temperature Transmitter		TT.4802/00	1205552
	Electric Clock		CE.3123/00	1217856A
	Fuel Gauge		BF.2205/00	1215219
	Super Shipe Saloon & Pick-Up, Pullman & Imperial Saloons Mark III from 1951	Speedometer	SS.502	SN.5401/01
Panel		PA.117	IP.4304/01	P.44309
Oil Gauge		OG.85	PG.6201/37	K.19855
Ammeter		AM.25	AM.6200/09	K.19851
Fuel Gauge		PG.127	FG.6240/02	K.19853
Temperature Gauge		RT.47	TG.6201/08	K.19852
Tank Unit (Snipe & Imperial)		TA.111	FT.5300/42	P.79388
Tank Unit (Pullman)		TA.99	FT.5300/49	P.41978
Electric Clock		C.116	-	P.44272
Super Snipe Mark IV from 1954		Speedometer	S.589-S.632	SS.1701/02
	Panel (IHS)	PA.132	-	P.44842
	Oil Gauge	OG.99	PG.4601/03	K.22635
	Temperature Gauge	RT.63	TG.4601/10	K.22636
	Panel (RHS)	PA.131	-	P.44843
	Fuel Gauge	PG.152	FG.4631/04	K.26637
	Tank Unit	TA.142	FT.5346/12	P.44796
	Electric Clock	C.132	CE.2502/03	P.44844
	Super Snipe Mark IVa Oct. 1955	Speedometer		SS.2702/10
Panel		SK.80153/3	-	P.45128
Fuel Gauge		UF.1309	FG.4631/05	K.24019
Panel		SK.80153/4	IM.2402/03	P.45253
Oil Gauge		UP.2501	PL.4663/01	K.25392
Temperature Gauge		UT.1700	TE.4601/00	K.25393
Temperature Transmitter		X.76207	TT.1200/00	P.45152
Tank Unit		TA.142	FT.5346/12	P.44796
Electric Clock		C.132	CE.2502/03	P.44844

MODEL	EQUIPMENT	OLD CODE	NEW CODE	VEH. MAKER PART NO.	
Super Snipe 4/6 - 6 Series I & II Oct. 1958 - June 1959 Standard Transmission	Speedometer	SN.5353/00	SN.5353/04	1202048	
	Panel		IP.3213/00	P.46240	
	Oil Gauge		PL.6205/00		
	Temperature Gauge		TC.6204/00		
	Temperature Transmitter		TT.3200/00	P.46245	
	Fuel Gauge		FG.2331/00	P.46241	
	Tank Unit		FT.3332/00	P.46243	
Electric Clock	CE.2194/08	CE.2194/09	P.46242		
Super Snipe 4/6 - 6 Series I & II July 1959 - Sept. 1959	As above except for:- Speedometer		SN.5353/04	1202048	
	Speedometer (R.A.R. 4.778:1)		SN.5353/08	1205278	
Oct. 1959 - 1960	As above except for:- Fuel Gauge		FG.2331/09		
Super Snipe Series III - Oct. 1960	Speedometer		SN.5353/12	1205384	
	Panel		IP.3213/01	1205386	
	Oil Gauge		PL.6205/00		
	Temperature Gauge		TC.6218/00		
	Fuel Gauge		FG.2331/11	1205387	
	Tank Unit		FT.3332/00	P.46243	
	Temperature Transmitter		TT.3800/00	1046977	
Electric Clock		CE.3116/02	1205247		
Super Snipe Series IV	Speedometer		SN.5353/22	1215220	
	Panel		IP.3213/03	1215230	
	Oil Gauge		PL.6205/01	5040873	
	Temperature Gauge		BT.6104/00		
	Fuel Gauge		BF.2205/00	1215219	
	Tank Unit		TFS.1116/04,6	1215086	
	Temperature Transmitter		TT.4802/00	1205552	
	Clock		CE.3123/00	1217856A	
	Voltage Regulator		BR.1300/01	1205576	
Vogue II	Panel		SR.8300/00 or SN.8300/19	1218208	
	Speedometer		SR.8300/07 or SR.8300/29		
	Temperature Gauge		BT.8101/00		
	Fuel Gauge		BF.8101/00		
	Tank Unit		TFS.3006/500	1216722	
	Temperature Transmitter		TT.4802/00	1205552	
	Voltage Regulator		BR.1300/01	1205576	
	Clock		CE.3509/00	1215234	
	Panel		IM.3400/00	1214473	
	Oil Gauge		PL.4603/00		
	Sceptre	Speedometer		SN.5324/12	1219365
		Fuel Gauge		BF.2203/04	1218234

HUMBER (cont'd)

MODEL	EQUIPMENT	OLD CODE	NEW CODE	VEH.MAKER PART NO.
Sceptre (Cont.'d)	Tank Unit Voltage Regulator Rev. Indicator Oil Gauge Temperature Gauge Temperature Transmitter Clock		TFS.3006/500 BR.1300/01 RN.1316/00 PL.2302/05 BT.2201/02 TT.4802/00 CE.2194/14	1216722 1205576 1206221 1215384 1218103 1205552 1219419

MODEL	EQUIPMENT	OLD CODE	NEW CODE	VEH. MAKER PART NO.
Mark V 2½ Litre Saloon 1949	Speedometer Fuel Gauge Tank Unit Dual Gauge 6'6" Rev. Ind. & Clock Clock only Gear Box (Rev. Ind.)	70717/2 70344 70330/1 70915 70718 49038/4 57577	SN.6304/03 FT.5386/03 GD.1200/03 RN.7455/01 CE.1703/04 BG.1509/00	C.2632 C.2637 C.3358 C.2636 C.1795
Mark V 2½ Litre Saloon Jan. 1950 - Dec. 1950	Speedometer Fuel Gauge Tank Unit Dual Gauge 6'6" Rev. Ind. & Clock Clock only Gear Box (Rev. Ind.)	70717/6 70344/2 70330/1 70915/1 70718/1 49038/5 57577	SN.6304/07 FG.2231/00 FT.5386/03 GD.1200/02 RN.7455/02 CE.1703/05 BG.1509/00	C.2632/1 C.2637/1 C.3358 C.2636/1 C.1795
MK. V 2½ Litre Saloon 1951	As above except for:- Speedometer	70717/4	SN.6304/12	C.4571
MK.V 3½ Litre Saloon 1949	Speedometer Dual Gauge 6'6" Fuel Gauge Rev. Ind. & Clock Clock only Gear Box (Rev. Ind.) Tank Unit	70717 70915 70344 70718 49038/4 36465 70330/1	SN.6304/01 GD.1200/03 RN.7455/01 CE.1703/04 BG.2514/00 FT.5386/03	C.2631 C.2636 C.1436 C.3358
MK. V 3½ Litre Saloon 1950 - Aug. 1950	As above except for:- Speedometer Dual Gauge 6'6" Fuel Gauge Rev. Ind. & Clock Clock only	70717/4 70915/1 70344/2 70718/1 49038/5	SN.6304/05 GD.1200/02 FG.2231/00 RN.7455/02 CE.1703/05	C.2631/1 C.2636/1 C.2637/1
MK. V 3½ Litre Saloon Sept. 1950	As above except for:- Speedometer	70717/12	SN.6304/10	C.4570
MK. VII Jan. 1951	Speedometer Rev. Ind. & Clock Rev. Indicator only Clock only Fuel Gauge Tank Unit (L.H. Tank) Tank Unit (R.H. ") Dual Gauge 6'6" Thermostat	70717/17 70718/3 RN.7405/08 49038/6 70344/3 76788 76790 70915/3 43570	SN.6304/14 RN.7455/04 RN.7455/08 CE.1703/06 FG.2231/01 FT.5300/28 FT.5300/29 85025/60	
MK. VII Feb. 1951 - Dec. 1952	As above except for:- Dual Gauge 7'6" Thermostat	70915/4 43570/5	GD.1200/01 85025/74	C.4666 C.13944

JAGUAR (cont'd)

MODEL	EQUIPMENT	OLD CODE	NEW CODE	VEH. MAKER PART NO.	
MK. VII Jan. 1953 to Chassis No. 716075	Speedometer RAR 4.55:1	70717/28	SN.6304/25	C.5387	
	Speedometer RAR 4.27:1	70717/17	SN.6304/14	C.4533	
	Speedometer RAR 4.27:1	70717/26	SN.6304/22	C.5508	
	Speedometer RAR 4.09:1	70717/30	SN.6304/28	C.5385	
	Rev. Ind. & Clock	70718/3	RN.7455/04		
	Rev. Indicator only	RN.7405/08	RN.7455/08		
	Clock only	49038/6	CE.1703/06		
	Fuel Gauge	70344/4	FG.2230/00	C.4667	
	Tank Unit (L.H. Tank)	76788	FT.5300/28	C.4539	
	Tank Unit (R.H. Tank)	76790	FT.5300/29	C.4540	
	Dual Gauge 7'6"	70915/4	GD.1200/01	C.4666	
	Thermostat	43570/5	85025/74	C.13944	
	MK. VII from Chassis No. 716076 Sept. 1954	As above except for:-			
Rev. Ind. & Clock Rev. Indicator only		51-117-105-05 RN.7405/07	RN.7455/05 RN.7455/07	C.9182	
MK. VII with Borg- Warner or Denormanville Overdrive 1952 - June, 1953	Speedometer RAR 4.55	70717/35	SN.6304/20	C.6844	
	Speedometer RAR	70717/34	SN.6304/19	C.6871	
	Rev. Ind. & Clock	70718/3	RN.7455/04		
	Rev. Indicator only	RN.7405/08	RN.7455/08		
	Clock only	49038/6	CE.1703/06		
	Fuel Gauge	70344/4	FG.2230/00	C.4667	
	Tank Unit (L.H. Tank)	76788	FT.5300/28	C.4539	
	Tank Unit (R.H. Tank)	76790	FT.5300/29	C.4540	
	Dual Gauge 7'6"	70915/4	GD.1200/01	C.4666	
	Thermostat	43570/5	85025/74	C.13944	
MK. VII with Borg- Warner or Denormanville Overdrive July, 1953 - Sept. 1954	As above except for:-				
	Rev. Ind. & Clock Rev. Indicator only	51-117-105-05 RN.7405/07	RN.7455/05 RN.7455/07	C.9182	
MK. VII Type "M" from Oct. 1954	Speedometer (Stand Transmission)	70717/17	SN.6304/14	C.4533	
	Speedometer (Overdrive & Auto. Transmission) RAR 4.55:1	70717/35	SN.6304/20	C.6844	
	Speedometer (Overdrive & Auto. Transmission) RAR 4.27:1	70717/34	SN.6304/19	C.6871	
	Rev. Ind. & Clock	51-117-105-05	RN.7455/05	C.9182	
	Rev. Indicator only	RN.7405/07	RN.7455/07		
	Clock only	49038/6	CE.1703/06		
	Fuel Gauge	70344/4	FG.2230/00	C.4667	
	Tank Unit (L.H. Tank)	76788	FT.5300/28	C.4539	
	Tank Unit (R.H. Tank)	76790	FT.5300/29	C.4540	
	Dual Gauge 7'6"	70915/5	GD.1200/00	C.9542	
	Thermostat	43570/28	85025/74	C.13944	
	MK. VIII from Oct. 1956	Speedometer (Standard Transmission)		SN.6354/14	
		Rev. Ind. & Clock		RN.7455/05	C.9182

MODEL	EQUIPMENT	OLD CODE	NEW CODE	VEH. MAKER PART NO.	
MK. VIII from Oct. 1956 (Cont'd)	Rev. Indicator only		RN.7455/07		
	Clock only		CE.1105/00		
	Fuel Gauge	70344/4	FG.2230/00	C.4667	
	Tank Unit (L.H. Tank)	76788	FT.5300/28	C.4539	
	Tank Unit (R.H. Tank)	76790	FT.5300/29	C.4540	
	Electric Clock (Rear Compartment)		CE.3501/07	BD.12188	
	Dual Gauge 7'6"	70915/5	GD.1200/00	C.9542	
	Thermostat	43570/28	85025/74	C.13944	
MK. IX 3.8 Litre from Oct. 1958	Speedometer (Standard Transmission)		SN.6354/14	C.4533/1	
	Speedometer (Overdrive)		SN.6354/20	C.6844/1	
	Speedometer (Auto. Transmission)		SN.6354/19	C.6871/1	
	Rev. Ind. & Clock		RN.7455/05	C.9138/1	
	Rev. Indicator only		RN.7455/07		
	Clock only		CE.1105/00		
	Fuel Gauge		FG.2230/00	C.4667	
	Tank Unit (L.H. Tank)		FT.5300/29	C.4540	
	Tank Unit (R.H. Tank)		FT.5300/28	C.4539	
	Electric Clock (Rear Compartment)		CE.3501/07	BD.12188	
	Dual Gauge 8'6"		GD.1200/00	C.14700	
	from June, 1959	As above except for:-			
		Rev. Ind. & Clock		RV.7400/00	C.14995
		Rev. Indicator only		RV.7400/01	
		Clock only		CE.1110/00	
Generator (Rev. Ind.)		TV.1100/00	C.14996		
MK. X from Oct. 1961	Speedometer (Standard Transmission)		SN.6323/00	C.18624	
	Speedometer (Auto. Transmission)		SN.6323/06	C.18632	
	Rev. Ind. & Clock		RV.7413/02	C.18627	
	Rev. Indicator only		RV.7413/05		
	Clock only		CE.1111/01		
	Generator (Rev. Ind.)		TV.1100/00	C.14996	
	Voltage Regulator		BR.1300/01	C.15485	
	Fuel Gauge		BF.2200/02	C.18635	
	Tank Unit (L.H. Tank)		TF.4004/123	C.18192	
	Tank Unit (R.H. Tank)		TF.3004/123	C.18191	
	Oil Pressure Indicator		PE.2300/02	C.18641	
	Oil Pressure Transmitter		PT.1801/06	C.15474	
	Temperature Indicator		BT.2200/01	C.18640	
Temperature Transmitter		TT.4201/00	C.16895		
2.4 from Sept. 1955	Speedometer (Standard Transmission)				
	RAR 4.27:1		SN.6303/10	C.11591	
	Speedometer (Standard Transmission)				
RAR 4.55:1	51-116-303-00	SN.6363/00	C.9637		

MODEL	EQUIPMENT	OLD CODE	NEW CODE	VEH.MAKER PART NO.
2.4 from Sept. 1955 (Cont.'d)				
from Chassis No. 907148	Speedometer (Standard Transmission) RAR 4.27:1		SN.6363/10	C.12607
	Speedometer (Standard Transmission) RAR 4.55:1		SN.6363/00	C.13436
	Speedometer (Overdrive) RAR 4.27:1		SN.6363/00	C.9637
	Speedometer (Overdrive) RAR 4.55:1		SN.6363/02	C.11593
from Chassis No. 907148	Speedometer (Overdrive) RAR 4.27:1	51-116-303-00	SN.6363/00	C.13436
	Speedometer (Overdrive) RAR 4.55:1		SN.6363/02	C.12609
	Speedometer (Auto. Transmission) RAR 4.27:1		SN.6363/00	C.13436
	Speedometer (Auto. Transmission) RAR 4.55:1		SN.6363/02	C.12609
	Rev. Ind. & Clock	51-117-108-00	RN.7460/00	C.12606
	Rev. Indicator only	RN.7408/01	RN.7460/01	
	Electric Clock only	51-411-477-00	CE.1106/00	
	Gear Box (Rev. Ind.)	70521/13		C.9913
	Dual Gauge 4'6"	42638/43	GD.1600/00	C.9640
	Fuel Gauge	49422/238	FG.2634/00	C.9641
	Tank Unit	Y.86108	FT.5386/01	C.9642
	Thermostat	43570/28	85025/74	C.13944
from Feb. 1956	As above except for:- Gear Box (Rev. Ind.)	BG.1301/00	BG.1301/10	
from May, 1956	As above except for:- Rev. Ind. & Clock Rev. Indicator only	Z.45763 Z.45763/1	RN.7460/00 RN.7460/01	C.12606
from Dec. 1957	As above except for:- Dual Gauge 4'6" Fuel Gauge		GD.1600/02 FG.2636/00	C.12605 C.12604
from July, 1959	As above except for:- Rev. Ind. & Clock Rev. Indicator only Clock only Generator (Rev. Ind.)		RV.7401/00 RV.7401/01 CE.1110/00 TV.1100/00	C.14993 C.14996
2.4 MK II from Oct. 1959	Speedometer (Standard Transmission) Speedometer (Overdrive)		SN.6317/00 SN.6317/02	C.15600 C.15602

MODEL	EQUIPMENT	OLD CODE	NEW CODE	VEH. MAKER PART NO.
2.4 MK II from Oct. 1959 (Cont.'d)	Speedometer (Auto. Transmission)		SN.6317/04	C.15604
	Fuel Gauge		BF.2200/00	C.15475
	Tank Unit	TF.1104/042	TF.1104/040	C.15476
	Oil Gauge		PE.2300/00	C.15913
	Oil Gauge Transmitter		PT.1801/10	C.15914
	Temperature Indicator		BT.2200/00	C.15471
	Temp. Ind. Transmitter		TT.4801/00	C.15472
	Rev. Ind. & Clock		RV.7403/00	C.15469
	Rev. Indicator only		RV.7403/01	
	Clock only		CE.1111/00	
	Generator (Rev. Ind.)		TV.1100/00	C.14996
	Voltage Regulator		BR.1300/01	C.15485
	Thermostat		85025/74	C.13944
	from 1960	As above except for:- Oil Gauge Oil Gauge Transmitter		PE.2300/01 PT.1801/06
2.4 Deluxe from May, 1956	Speedometer (Standard Transmission) RAR 4.55:1	51-116-303-00	SN.6363/00	C.9637
	Speedometer (Standard Transmission) RAR 4.27:1		SN.6303/10	C.11591
	Speedometer (Overdrive) RAR 4.55:1		SN.6303/02	C.11593
	Speedometer (Overdrive) RAR 4.27:1		SN.6363/00	C.9637
	Rev. Ind. & Clock	Z.45763	RN.7460/00	C.12606
	Rev. Indicator only	Z.45763/1	RN.7460/01	
	Clock only	51-411-477-00	CE.1106/00	
	Gear Box (Rev. Ind.) (Early Models)	70521/13		C.9913
	Gear Box (Rev. Ind.) (Late Models)	BG.1301/00	BG.1301/10	C.9914
	Dual Gauge 4'6"	42638/43	GD.1600/00	C.9640
	Fuel Gauge	49422/238	FG.2634/00	C.9641
	Tank Unit	Y.86108	FT.5386/01	C.9642
	Thermostat	43570/28	85025/74	C.13944
	3.4 from Feb. 1957	Speedometer (Standard Transmission) RAR 3.54:1		SN.6363/23
Speedometer (Standard Transmission) RAR 3.77:1			SN.6363/17	C.13040
Speedometer (Overdrive) RAR 3.77:1			SN.6363/19	C.13038
Speedometer (Auto. Transmission) RAR 3.54:1			SN.6363/17	C.13040
Rev. Ind. & Clock			RN.7460/00	C.12606

MODEL	EQUIPMENT	OLD CODE	NEW CODE	VEH. MAKER PART NO.
3.4 from Feb. 1957 (Cont.'d)	Rev. Indicator only		RN.7460/01	
	Clock only	51-411-477-00	CE.1106/00	
	Gear Box (Rev. Ind.)	BG.1301/00	BG.1301/10	
	Dual Gauge 4'6"		GD.1600/02	C.12605
	Fuel Gauge		FG.2636/00	C.12604
	Tank Unit	Y.86108	FT.5386/01	C.9642
	Thermostat	43570/28	85025/74	C.13944
from June, 1959	As above except for:-			
	Rev. Ind. & Clock		RV.7401/00	C.14993
	Rev. Indicator only		RV.7401/01	
	Clock only		CE.1110/00	
3.4 MK. II from Oct. 1959	Generator (Rev. Ind.)		TV.1100/00	C.14996
	Speedometer (Standard Transmission)		SN.6317/06	C.15466
	Speedometer (Overdrive)		SN.6317/08	C.15480
	Speedometer (Auto. Transmission)		SN.6317/10	C.15483
	Speedometer (Auto. Transmission)			
	RAR 49:13		SN.6317/48	
	Speedometer (Auto. Transmission)			
	RAR 46:13		SN.6317/49	
	Fuel Gauge		BF.2200/00	C.15475
	Tank Unit	TF.1104/042	TF.1104/040	C.15476
	Oil Gauge		PE.2300/00	C.15913
	Oil Gauge Transmitter		PT.1801/10	C.15914
	Temperature Indicator		BT.2200/00	C.15471
	Temp. Ind. Transmitter		TT.4801/00	C.15472
	Rev. Indicator & Clock		RV.7403/00	C.15469
	Rev. Indicator only		RV.7403/01	C.15470
	Clock only		CE.1111/00	
	Generator (Rev. Ind.)		TV.1100/00	C.14996
	Voltage Regulator		BR.1300/01	C.15485
	Thermostat		85025/74	C.13944
from March 1960	As above except for:-			
	Oil Gauge		PE.2300/01	C.15473
	Oil Gauge Transmitter		PT.1801/06	C.15474
3.8 MK II from Oct. 1959	Speedometer (Standard Transmission)		SN.6317/06	C.15466
	Speedometer (Overdrive)		SN.6317/08	C.15480
	Speedometer (Auto. Transmission)		SN.6317/10	C.15483
	Fuel Gauge		BF.2200/00	C.15475
	Tank Unit	TF.1104/042	TF.1104/040	C.15476
	Oil Gauge		PE.2300/00	C.15913
	Oil Gauge Transmitter		PT.1801/10	C.15914
	Temperature Indicator		BT.2200/00	C.15471
	Temperature Transmitter		TT.4801/00	C.15472
	Rev. Ind. & Clock		RV.7403/00	C.15469
	Rev. Indicator only		RV.7403/01	
	Clock only		CE.1111/00	

MODEL	EQUIPMENT	OLD CODE	NEW CODE	VEH.MAKER PART NO.
3.8 MK. II from Oct. 1959 (Cont.'d)	Generator (Rev. Ind.)		TV.1100/00	C.14996
	Voltage Regulator		BR.1300/01	C.15485
	Thermostat		85025/74	C.13944
from March 1960	As above except for:-			
	Oil Gauge		PE.2300/01	C.15473
	Oil Gauge Transmitter		PT.1801/06	C.15474
3.8 Litre E Type Sports Car March 1961 - April 1961	Speedometer 3.31 RAR		SN.6322/00	C.17110
	Speedometer 3.54 RAR		SN.6322/03	C.17113
	Speedometer 2.93 RAR		SN.6322/06	C.17116
	Fuel Gauge		BF.2200/01	C.16896
	Tank Unit		TF.1104/051	C.16077
	Oil Pressure Indicator		PE.2300/01	C.15472
	Oil Pressure Transmitter		PT.1801/06	C.15474
	Temperature Indicator		BT.2200/00	C.15471
	Temperature Transmitter		TT.4801/00	C.16895
	Voltage Regulator		BR.1300/01	C.15485
	Rev. Ind. & Clock		RV.7403/02	C.16975
	Rev. Indicator only		RV.7403/03	
	Electric Clock only		CE.1111/00	
Generator (Rev. Ind.)		TV.1100/00	C.14996	
Gear Box (Speedometer)		BG.2402/02	C.17087	
May 1961 - Oct. 1961	As above except for:-			
	Speedometer 3.07 RAR		SN.6322/09	C.18970
Nov. 1961 - Feb. 1962	As above except for:-			
	Temperature Transmitter		TT.4201/00	C.16895
	Rev. Ind. & Clock		RV.7413/03	C.20085
	Rev. Indicator only		RV.7413/04	
March 1962	As above except for:-			
	Tank Unit		TF.1104/049	C.20429

MODEL	EQUIPMENT	OLD CODE	NEW CODE	VEH. MAKER PART NO.
"TC"	Speedometer	S.461	SC.5501/00	
	Oil Gauge	OG.54	X.45854	A.903
	Rev. Ind. & Clock	K.30	RC.2501/00	A.1237
	Electric Clock	L.H.B.		
	Petrol Warning Light	W.L.P.1		1240
	Tank Unit	TA.107	FT.5786/04	
	Gear Box (Rev. Ind.)	R.141/AT17		A.1239
	Thermostat	X.43449	X.43467/1	A.1208
"TD"	Speedometer	S.516		A.1360
	Petrol Warning Light	W.L.P.1		1240
	Tank Unit	TA.131	FT.5786/00	136209
	Oil Gauge	OG.54	X.45854	A.903
	Rev. Ind. & Clock	K.39	RC.2501/01	300222
	Electric Clock	L.F.A.		
	Gear Box (Rev. Ind.)	R.141/AT17		A.1239
	Thermostat	X.43449	X.43467/1	A.1208
	Temperature Gauge *	RT.23	TG.1501/13	
	Oil Temp. Gauge *	OT.13	TG.1501/14	
Dual Gauge *	TO.9	GD.1500/33		
from 1952	Speedometer	S.582	SN.5406/06	500527
	Tank Unit	TA.131	FT.5786/00	136209
	Oil Gauge	OG.98	PG.1501/50	500530
	Rev. Ind. & Clock	K.45	X.65021/4	500529
	Electric Clock	X.80160	CE.1704/00	
	Gear Box (Rev. Ind.)	R.141/AT17		A.1239
	Thermostat	X.43449	X.43467/1	A.1208
	Temperature Gauge *	RT.62	TG.1502/11	
	Oil Temp. Gauge *	OT.17	TG.1501/99	
Dual Gauge *	TO.9	GD.1500/33		
from 1953	As above except for:- Speedometer	S.598	SN.6307/01	500616
"TF"	Speedometer & Clock	SC.76	SN.7515/00	ACG.5089
	Speedometer only	51-117-515-02	SN.7515/02	
	Electric Clock only	X.84082	CE.1110/00	
	Panel complete	PA.144	X.58958/2	ACG.5100
	Oil Gauge	OG.106	PG.6201/22	ACG.5101
	Temperature Gauge only	RT.76	TG.6201/23	ACG.5102
	Rev. Indicator	RC.175	51-118-105-00 or RN.2304/00	ACG.5092
	Tank Unit	TA.131	FT.5786/00	136209
	Gear Box (Rev. Ind.)	R.141/AT17		ACG.5099
	Thermostat	X.43605/9	85035/70	163469
	Speedometer	51-116-104-02	SN.6104/02	AHH.5185
	Fuel Gauge	X.49422/239	FG.2530/25	AHH.5189
	Tank Unit	Y.86112	FT.5300/20	AHH.5114
Dual Gauge	X.42638/44	GD.1501/00	AHH.5188	
Rev. Indicator	51-112-102-00	RN.2300/00	AHH.5187	
Thermostat	X.43570/28	85025/74	11G.291	
	* Denotes optional	equipment		
M.G.A. to Chassis No. M.G.A. 14089				

MODEL	EQUIPMENT	OLD CODE	NEW CODE	VEH. MAKER PART NO.
from Chassis No. M.G.A. 14090	Speedometer	SN.6104/06	SN.6161/06	17H.292
	Fuel Gauge		FG.2530/05	17H.299
	Dual Gauge		GD.1501/01	17H.298
	Rev. Indicator	RN.2300/01	RN.2350/01	17H.300
	Thermostat	X.43570/28	85025/74	11G.291
	Tank Unit	Y.86112	FT.5300/20	AHH.5114
M.G.A. Twin Cam & M.G.A. 1600	Speedometer	SN.6101 6	SN.6161/06	17H.292
	Fuel Gauge		FG.2530/05	17H.299
	Tank Unit		FT.5300/20	AHH.5114
	Dual Gauge		GD.1501/01	17H.298
	Rev. Indicator	RN.2300/02	RN.2350/01	17H.300
	Thermostat		85025/74	11G.291
M.G.A. 1600 MK.II	As above except for:- Speedometer		SN.6161/12	BHA.4060
M.G.B.	Speedometer		SN.6125/04	BHA.4286
	Speedometer (Overdrive)		SN.6125/06	BHA.4288
	Speedometer (Gear Box)		BG.2401/00	1H.3131
	Fuel Gauge		FG.2530/63	BHA.4214
	Tank Unit		FT.5301/19	BHA.4292
	Dual Gauge (Oil-Water)		GD.1501/01	BHA.4295
	Rev. Indicator		RN.2312/01	BHA.4212
	Thermostat (Normal)		85025/74	11G.291
1 $\frac{1}{4}$ Litre Saloon	Speedometer & Clock	SC.52	SN.7507/01	
	Electric Clock only	SK.58861/2	CE.1108/01	
	Panel complete	PA.109	IP.3221/00	
	Oil Gauge	DG.79	PG.6201/05	
	Fuel Gauge	PG.116	FG.6237/08	
	Ammeter	AM.22	X.65001	
	Tank Unit	TA.116	FT.5300/83	
	Thermostat	X.43449	X.43467/1	
1 $\frac{1}{4}$ Litre Sports	Speedometer	S.516		
	Oil Gauge	OG.54	X.45854	A.903
	Fuel Gauge	PG.130	FG.2530/39	
	Tank Unit	TA.116	FT.5300/83	
	Rev. Ind. & Clock	K.30	RC.2501/00	
	Electric Clock only	L.H.B.		
	Gear Box (Rev. Ind.)	R.141/AT17		
	Thermostat	X.43449	X.43467/1	A.1208
1 $\frac{1}{2}$ Litre Magnette	Speedometer	S.631	SS.2701/01	186507
	Panel complete	PA.142	IP.2500/01	186510
	Fuel Gauge	PG.164	FG.6236/00	186508
	Temperature Gauge	RT.73	TE.6204/00	ACH.5498
	Panel Complete	PA.143	IP.2500/00	186622
	Oil Gauge	OG.105	PL.6261/00	186509
	Tank Unit	TA.151	FT.5300/52	185128

MODEL	EQUIPMENT	OLD CODE	NEW CODE	VEH. MAKER PART NO.
1½ Litre Magnette (Cont.'d)	Temperature Transmitter Electric Clock Thermostat	X.76207/1 C.141 X.43570/28	TT.1200/01 CE.2502/05 85025/74	3H.2836 186627 11G.291
from 1955	As above except for:- Speedometer	51-122-701-03	SS.2701/03	ACH.5742
from Chassis No. ZA.14933	As above except for:- Electric Clock		CE.2500/00	ADB.3628
from Chassis No. 18100	As above except for:- Speedometer		SS.2701/05	17H.474
Magnette MK. III & MK. IV	Speedometer Panel complete Temperature Gauge Fuel Gauge Panel complete Oil Gauge Tank Unit Temperature Transmitter Electric Clock Thermostat	FT.5301/01	SS.2704/00 IP.2500/03 TC.6213/00 FG.6236/01 IP.2500/02 PL.6261/01 87M10 TT.3800/00 CE.3504/02 85025/70	BCA.4269 BCA.4273 BCA.4274 BCA.4275 BCA.4271 BCA.4272 1H.2153 13H.136 BCA.4276 13H.310

MODEL	EQUIPMENT	OLD CODE	NEW CODE	VEH. MAKER PART NO.
8 h.p. Series "E"	Speedometer	X.53186/1	SN.3302/02	39352
	Panel complete	X.53289/3	IP.3219/03	39166
	Fuel Gauge	X.48588/4	FG.6610/02	39167
	Tank Unit	Y.51428	FT.5146/01	39121
10 cwt. Van Series "Y"	Speedometer	X.42873) SN.3102/01)	SN.3152/01	66813
	Fuel Gauge	X.42378	FG.2530/26	66717
	Tank Unit	Y.42377		66714
Minor (S.V. Engine)	Speedometer	X.70620/2) SN.3205/03)	SN.3255/03	AAA.2095
	Fuel Gauge	UF.1217	FG.4631/10	AAA.2097
	Tank Unit	Y.65694) FT.5300/44)	87M2	AAA.2094
	Electric Clock	* X.70708/1	CE.2276/04	HYL.1461
Minor Series II O.H.V. Engine	Speedometer	X.70620/7) SN.3205/05)	SN.3255/05	AAA.3794
	Speedometer	* 51-115-207-11	SN.5207/11	
	Fuel Gauge	UF.1217	FG.4631/10	AAA.2095
	Tank Unit	Y.65694) FT.5300/44)	87M2	AAA.2094
	Thermostat	X.43570/28	85025/74	11G.291
	Electric Clock	* X.70708/1	CE.2276/04	HYL.1461
Minor Series II O.H.V. Engine from 1955	Panel complete	51-114-401-09) SN.4401/09)	SN.4451/09	ADA.1670
	Speedometer	51-114-401-05) SN.4401/05)	SN.4451/05	AJA.5063
	Fuel Gauge	X.86036/2	FG.6233/01	ADA.1666
	Tank Unit	Y.65694) FT.5300/44)	87M2	AAA.2094
	Thermostat	X.43570/28	85025/74	11G.291
	Oil Pressure Switch	X.80001/1/7) PS.1227/07)	65M15	HYL.2445
Minor "1000"	Panel complete	51-114-401-15) SN.4401/15)	SN.4451/15	17H.558
	Speedometer	51-114-401-17) SN.4401/17)	SN.4451/17	17H.701
	Fuel Gauge	X.86036/2	FG.6233/01	ADA.1666
	Tank Unit (Saloon)	Y.65694) FT.5300/44)	87M2	AAA.2094
	Tank Unit (Van)	FT.5300/73	87M3	17H.732
	Oil Pressure Switch	X.80001/1/7) PS.1227/07)	65M15	HYL.2445
	Thermostat	X.43570/28	85025/74	11G.291
from 1958	Panel complete	4406/00) 4407/00)	SN.4466/00) SN.4477/00)	BCA.4157
	Speedometer	4406/04) 4407/02)	SN.4466/04) SN.4477/02)	17H.1545
		* Denotes optional	equipment	

MODEL	EQUIPMENT	OLD CODE	NEW CODE	VEH.MAKER PART NO.
Minor "1000" from 1958 (Cont.'a)	Fuel Gauge	X.86036/2	FG.6233/01	ADA.1666
	Tank Unit (Saloon)	FT.5300/73	87M3	17H.732
	Tank Unit (Van)	FT.5300/44	87M2	AAA.2094
	Oil Pressure Switch	PS.1227/07	65M15	HYL.2445
	Thermostat		85025/74	11G.291
Major Series I	Panel complete		SN.9805/04	21G.9060
	Speedometer		SN.9805/06	21G.9061
	Fuel Gauge		FG.6244/00	21G.9018
	Temperature Gauge		TC.6201/00	21G.9017
	Tank Unit	FT.5300/71	87M5	21G.2054
	Temperature Transmitter		TT.3200/00	17H.575
	Oil Pressure Switch	X.80001/1/7) PS.1227/07)	65M15	HYL.2445
Thermostat		85025/74	11G.291	
Major Series II	Speedometer		84M1	AYH.9022
	Panel complete		48M2	AYH.9023
	Fuel Gauge		58M6	AYH.9024
	Oil Gauge		61M1	AYH.9026
	Temperature Gauge		94M3	AYH.9025
	Tank Unit	FT.5300/77	87M7	BCA.4132
	Temperature Transmitter		TT3200/00	17H.575
	Thermostat		85025/74	11G.291
Oxford	Speedometer	X.69982/5	SN.5208/04	AAA.2031
	Fuel Gauge	UF.1215	FG.4631/02	AAA.2032
	Electric Clock	X.69983/1	CE.2202/01	AAA.1917
	Tank Unit	Y.65706	FT.5300/45	AAA.1758
	Thermostat	X.43605/1	85035/70	164421
Oxford and Cowley from 1952	Speedometer	X.76592	SN.5209/01	AAA.3583
	Fuel Gauge	UF.1410	FG.4633/08	AAA.3582
	Electric Clock	X.76593	CE.2201/00	AAA.3581
	Tank Unit	Y.65706	FT.5300/45	AAA.1758
	Thermostat	X.43605/1	85035/70	164421
Oxford Series II	Speedometer & Clock	51-118-605-04	SN.7530/04	AJH.5141
	Speedometer	51-118-605-08	SN.7530/08	
	Electric Clock	X.80418	CE.1705/00	AJA.5124
	Panel complete	X.80416	IP.4301/01	ACH.5001
	Fuel Gauge	X.80095/1	FG.6243/02	ACH.5594
	Temperature Gauge	X.80540/2	TE.6211/00	ACH.5593
	Tank Unit	Y.80804	FT.5300/61	ADH.675
	Temperature Transmitter	X.76207/1	TT.1200/01	3H.2836
	Thermostat	X.43570/28	85025/74	11G.291
Oxford Series II from 1954	As above except for:-			
	Speedometer & Clock	51-118-605-01	SN.7530/01	ACH.5000
Speedometer	51-118-605-06	SN.7530/06		

MODEL	EQUIPMENT	OLD CODE	NEW CODE	VEH. MAKER PART NO.
Oxford Series III	Speedometer	Z.46253	SN.6311/02	17H.468
	Panel complete		IP.4301/05	17H.464
	Fuel Gauge		FG.6243/03	17H.467
	Temperature Gauge		TC.6200/00	17H.466
	Tank Unit	Y.80804	FT.5300/61	ADH.675
	Temperature Transmitter		TT.3200/00	17H.575
	Electric Clock		CE.3106/00	17H.465
	Thermostat		85025/74	11G.291
Oxford Series V	Speedometer		SN.6112/05	AYH.9092
	Panel complete		IP.3214/00	BCA.4233
	Fuel Gauge		FG.6241/06	BCA.4236
	Oil Gauge		PL.6265/06	BCA.4235
	Temperature Gauge		TC.6210/00	BCA.4234
	Tank Unit		FT.5301/01 87M10	1H.2153
	Temperature Transmitter		TT.3800/00	13H.136
	Thermostat		85025/74	11G.291
Electric Clock *		CE.3112/00	BCA.4234	
Oxford $\frac{1}{2}$ ton Van and Truck	Speedometer	Z.46253	SN.6311/02	17H.468
	Panel		IP.4301/04	17H.463
	Fuel Gauge		FG.6243/03	17H.467
	Tank Unit		FT.5300/07	17H.222
	Thermostat	X.43570/28	X.85025/74	11G.291
	Temperature Gauge		TC.6200/00	17H.466
	Temperature Transmitter*		TT.3200/00	17H.575
"Six"	Speedometer	X.69982/2	SN.5208/02	135420
	Fuel Gauge	UF.1216	FG.4631/09	135396
	Tank Unit	Y.70203	FT.5346/21	AAA.1828
	Electric Clock	X.69983/1	CE.2202/01	AAA.1917
	Thermostat	X.43605	85035/70	164421
from 1949	As above except for:- Speedometer	X.69982/8	SN.5208/06	135420
from 1952	Speedometer	X.76592	SN.5209/01	AAA.3583
	Fuel Gauge	UF.1411	FG.4633/09	183562
	Tank Unit	Y.70203	FT.5346/21	AAA.1828
	Electric Clock	X.76593	CE.2201/00	AAA.3581
	Thermostat	X.43605/1	85035/70	164421
Isis Saloon and Traveller's Car	Speedometer & Clock	51-117-601-01	SN.7500/00	ACC.5580
	Speedometer		SN.7500/03	
	Electric Clock	X.80418	CE.1705/00	AJH.5124
	Panel complete	X.80416	IP.4301/01	ACH.5001
	Fuel Gauge	X.80095/1	FG.6243/02	ACH.5594
	Temperature Gauge	X.80540/2	TE.6211/00	ACH.5593
	Tank Unit	Y.80804	FT.5300/61	ADH.675
	Temperature Transmitter	X.76207/1	TT.1200/01	3H.2836
	Thermostat	X.43570/28	85025/74	11G.291
from 1956	As above except for:- Speedometer & Clock		SN.7500/10	17H.99
	*Denotes optional equipment			

MODEL	EQUIPMENT	OLD CODE	NEW CODE	VEH.MAKER PART NO.
Isis Saloon and Traveller's Car from 1956 (Cont.'d)	Speedometer		SN.7500/12	
Marshall	Speedometer Panel complete Fuel Gauge Temperature Gauge Temperature Transmitter Tank Unit Electric Clock * Thermostat	X.76207/1 51-412-501-01	76M1 32M1 58M2 93M1 TT.1200/01 FT.5300/31 CE.3500/01 85025/74	AC.10383 AC.10377 HYL.1463 HYL.1465 3H.2836 11B.2234 1G.2892 11G.291
Major Series III "Elite"	Speedometer 3 in 1 Cluster Fuel Gauge Temperature Gauge Oil Gauge Tank Unit		84M5-1 48M4-1 58M14-1 92M5-1 61M8-1 87M7	AYH.9140 AYH.9170 HYL.2269 HYL.2272 HYL.2271 BCA.4132
Mini Minor 850 cc Saloon and Van	Panel Speedometer Fuel Gauge Tank Unit (Saloon) Tank Unit (Van) Oil Pressure Switch Thermostat	SN.4410/00 SN.4410/02 PS.5307/07	SN.4480/00 SN.4480/02 FG.6233/04 FT.2330/05 FT.5301/11 65M17 85025/74	BCA.4461 BCA.4462 BCA.4465 2A.2163 21A.303 13H.597 11G.291
Mini Minor Super De Luxe	Panel Speedometer Fuel Gauge Tank Unit (Kit) Voltage Regulator Oil Pressure Switch		SN.4417/00 SN.4417/02 BF.6108/00 KP.7115/00 BR.1305/00 65M17	13H.1887 13H.1888 13H.2133 HYL.3376 13H.2132 13H.597
Mini Minor 850 Saloon, and Super De Luxe June 1965 -	Panel Speedometer Fuel Gauge Tank Unit (Kit) Voltage Regulator Oil Pressure Switch		54M2-1/3 54M2-1/4 59M2-1/3 89M1/1 BR.1300/01 65M17	AYA.9064 13H.661 13H.597
Morris Mini-Cooper	Combined Instruments Speedometer only Fuel Gauge Tank Unit Oil Pressure Gauge Temperature Gauge Temperature Transmitter		SN.4479/06 SN.4479/08 FG.6233/05 FT.2330/05 PL.2302/19 TC.4303/07 TT.3800/00	5L.205 5L.206 5L.199 2A.2163 5L.200 13H.287 13H.136
Mini-Cooper 1964	As above except for: Tank Unit		KP.7110/00	HYL.3079
		* Denotes optional	equipment	

MODEL	EQUIPMENT	OLD CODE	NEW CODE	VEH.MAKER PART NO.
Mini-Cooper "S" 1963-1964	Panel Speedometer Fuel Gauge Tank Unit Oil Gauge Temperature Gauge Temperature Transmitter		SN.4479/20 SN.4479/21 FG.6233/05 FT.2330/05 PL.2302/19 TC.4303/07 TT.3800/00	13H.1424 13H.1425 5L.199 2A.2163 5L.200 13H.827 13H.136
Cooper "S" 1964	As above except for: Tank Unit		KP.7110/00	HYL.3079
Morris 1100	Combined Instruments Speedometer only Fuel Gauge Temperature Gauge Voltage Regulator Temperature Transmitter Tank Unit (Kit) Oil Pressure Switch Differential Pressure Switch	SN.9814/08 SN.9814/12 BF.8102/00 BT.8102/00 TT.3802/00	54M1-1 84M8-1/1 59M1-1/1 95M1-1/1 BR.1300/01 97M4 KP.7106/00 65M17 DPS.1001/09A	AYG.9000 AYG.9001 37H.875 37H.874 13H.661 BCA.4661 HYL.2916 13H.597 13H.1492
from 1965	As above except for: Speedometer only Fuel Gauge Temperature Gauge		84M8-1/2 59M1-1/2 95M1-1/2	HYL.3311 HYL.3312 HYL.3313

MODEL	EQUIPMENT	OLD CODE	NEW CODE	VEH.MAKER PART NO.	
1½ Litre 12 HP 2½ Litre 16 HP Saloon and Sports	Speedometer and Clock	SC.45	SN.7501/03	H.7179	
	Clock only	SK.65087/1	CE.1107/01		
	Panel complete	OA.1	IP.2105/00	H.7447	
	Oil Gauge	OG.80	X.53953/1		
	Panel complete	FW.2	-	H.7831	
	Fuel Gauge	PG.115	FG.7231/01	H.7193	
	Temperature Gauge	RT.36	TG.7601/00		
	Tank Unit (Saloon)	TA.113	FT.5346/19	H.7329	
	Tank Unit (Sports) - Top	TA.128	FT.5346/31	H.7811	
	Tank Unit (Sports) - Bottom	TA.129	FT.5300/81	H.7812	
	Thermostat	X.43467	X.43467/1	R.1111	
	from 1949	As above except for:- Speedometer and Clock Clock only	SC.43 SK.65087/1	SN.7501/01 CE.1107/01	H.7328
	from 1950	Speedometer (1½ Litre)	S.536	SN.5310/06	H.8214
Speedometer (2½ Litre)		S.537	SN.5310/12	H.8215	
Oil Gauge		OG.89	PG.4601/02	H.8217	
Fuel Gauge		PG.138	FG.4632/05	H.7216	
Temperature Gauge		RT.54	TG.4601/06	H.8218	
Electric Clock		C.124	CE.2351/03	H.8213	
Tank Unit		TA.113	FT.5346/19	H.7329	
Thermostat		X.43467	X.43467/1	R.1111	
Rev. Ind. and Clock *		K.44	X.70698/1		
Clock only *		SK.58861/4	CE.1108/02		
Gear Box (R.1) *		34012/5	BG.2200/50		
Pathfinder from 1954	Speedometer	S.629	SN.5409/02	ACB.5252	
	Panel complete	PA.140	IP.4300/02	ACB.5254	
	Fuel Gauge	PG.162	FG.6243/01	AJB.5061	
	Temperature Gauge	RT.71	TE.6400/00	AJB.5062	
	Oil Gauge	OG.104	X.80520/2	AJB.5060	
	Tank Unit	TA.149	FT.5346/15	ACB.5467	
	Temperature Transmitter	X.76207/1	TT.1200/01	3H.2836	
	Rev. Indicator	RC.168 51-111-404-00	RN.1404/00	ACB.5253	
	Gear Box (R.1)	X.70515	Obsolete		
	Electric Clock	C.141	CE.2502/05	186627	
	Thermostat	X.43605/9	85035/70	163469	
Pathfinder from Chassis RNH 2873	As above except for:- Rev. Indicator		RN.1404/01	ACB.5789	
	Gear Box (R.1)		BG.1300/00	AEB.185	
from July, 1956	As above except for:- Electric Clock		CE.2500/00	ADB.3628	
from October, 1956	As above except for:- Electric Clock		CE.3501/04	AHB.5110	
		* Denotes optional	equipment		

MODEL	EQUIPMENT	OLD CODE	NEW CODE	VEH.MAKER PART NO.
2½ Litre Pathfinder with Overdrive	As above except for:- Speedometer		SN.5409/12	17H.95

ROVER

MODEL		EQUIPMENT	OLD CODE	NEW CODE	VEH.MAKER PART NO.
Landrover	1946	Speedometer	S.511	SN.3102/09	218282
		Fuel Gauge	PG.129	FG.2530/06	217630
		Tank Unit	TA.125	FT.5300/48	218021
		Oil Pressure Switch	Z.124)	65M6	217644
			PS.1224/10)		
		Oil Warning Light	WL.02		217645
from Chassis No. 8666183	1949	As above except for:- Speedometer	S.530	SN.3102/11	231911
	1951	As above except for:- Oil Warning Light deleted and Dual Gauge included. Dual Gauge. 3' 9"	T.0.6	GD.1500/32	233480
from May, 1951		As above except for:- Dual Gauge. 3' 9"	T.0.8	GD.1500/32	233480/A
from 1952		As above except for:- Dual Gauge 6' 8"	T.0.10	GD.1500/32	233480/B
from 1953		As above except for:- Oil Pressure Switch	Z.135)	65M6	240526
			FS.1224/10)		
1953 - May 1958 86" and 107" w/base		Speedometer	S.604)	SN.3391/01	239564
			SN.3321/01)		
		Panel complete	PA.133	IP.3200/11	239566
		Fuel Gauge	PG.153	FG.6237/13	239568
		Warning Light only	Z.136	WL.4001/00	239569
		Tank Unit	TA.146	FT.5346/13	236017
		Oil Pressure Switch	Z.135)	65M6	240526
			FS.1224/10)		
		Speedometer (Trip) *	S.595)	SN.5328/00	240426
			SN.5309/16)		
		Dual Gauge 7'0" *	T0.10	GD.1500/32	233480
		Oil Thermometer (Diesel) *	OT.15	TG.1501/87	232341
		Oil Thermometer (Petrol) *	OT.15	TG.1501/87	
Landrover Series II 88" w/base May, 1958		Speedometer (n/trip)	SN.3303/16)	SN.3391/01	239564
			SN.3321/01)		
		Speedometer (trip) *	SN.5309/16	SN.5328/00	240426
		Panel complete		IP.3200/11	239566
		Fuel gauge		FG.6327/13	239568
		Warning Light		WL.4001/00	239569
		Tank Unit (Petrol)		FT.5346/13	236017
		Tank Unit (Diesel)		FT.5386/00	271230
		Oil Thermometer 2'0" Diesel *		TG.1501/87	23241
		Oil Thermometer 3'0" Petrol *		TG.1501/87	240733
		Dual Gauge 7'0" Petrol *	GD.1500/32	GD.1500/62	523683

* Denotes optional equipment

MODEL	EQUIPMENT	OLD CODE	NEW CODE	VEH.MAKER PART NO.
Landrover Series II 88" w/base May, 1958 (Cont'd)	Dual Gauge 3'6" Diesel *	GD.1500/32	GD.1500/62	523540
Landrover Series II 109" w/base	As above except for:- Speedometer (n/trip)	SN.3303/59) SN.3321/03)	SN.3391/03	279340
	Speedometer (Trip) *	SN.5309/40	SN.5328/02	279342
	Panel complete		IP.3200/11	239566
	Fuel Gauge		FG.6237/13	239568
	Warning Light		WL.4001/00	239569
	Oil Thermometer 4'8" *		TG.1501/87	23241
	Dual Gauge 4'5" Petrol *	GD.1500/32	GD.1500/62	523683
	Dual Gauge 2'4" Diesel *	GD.1500/32	GD.1500/62	523540
November, 1958 Landrover Series II 109" w/base. Long Station Wagon.	As above except for:- Panel complete Fuel Gauge Tank Unit (Petrol) Tank Unit (Diesel)		IP.3200/15 FG.6237/23 FT.5300/89 FT.5340/06	502022 502023 501620 501620
Landrover Series IIa 109" w/base September, 1961.	Speedometer Speedometer * Panel Fuel Gauge Warning Light Tank Unit (Petrol) Tank Unit (Diesel) Temperature Gauge * Dual Gauge *	SN.3321/03	SN.3391/03 SN.5328/02 IP.3200/39 FG.6249/00 WL.4007/00 FT.5347/07 FT.5387/00 TG.1501/87 GD.1500/62	
Landrover Series IIa 109" w/base. Long Station Wagon. September, 1961	As above except for:- Panel Fuel Gauge Ammeter Tank Unit (Petrol) Tank Unit (Diesel)		IP.3200/38 FG.6249/01 AM.6207/00 FT.5301/18 FT.5342/00	
Landrover Series IIa 88" w/base.	As above except for:- Speedometer Speedometer *	SN.3321/01	SN.3391/01 SN.5328/00	
				*Denotes optional equipment

ROVER (cont'd)

MODEL	EQUIPMENT	OLD CODE	NEW CODE	VEH.MAKER PART NO.
"60" and "75" January - June, 1948	Speedometer	SS.497	SN.5303/02	214619
	Dual Gauge 7"0"	TO.2	42638/10	213252
	Fuel Gauge and Oil Level Indicator	PO.101	FG.2530/36	08974
	Tank Unit	TA.117	FT.5300/41	09780
	Sump Unit	SU.1	FT.6360/00	09068
	Electric Clock	C.111		213841
	"60" and "75" July 1948 - December 1949	As above except for:- Speedometer	SS.498	SN.5303/04
"60" 1954 - November, 1955		Speedometer	S.592	SN.5312/10
	Panel complete	PA.130	IP.3206/01	270015
	Ammeter	AM.26	AM.6201/00	234377
	Fuel Gauge and Oil Level Indicator	POL.12	FG.6231/03	236652
	Temperature Gauge	RT.59	TG.6202/01	234376
	Tank Unit	TA/141	FT.5300/24	235818
	Sump Unit	Y.80978	FT.6360/01	246349
	Electric Clock	C.127	CE.2126/01	234372
	Oil Pressure Switch	Z.135 PS.1224/10)	65M6	240526
	Speedometer *	S.593	SN.6109/01	236460
	"60" December, 1955 - August, 1956	As above except for:- Temperature Gauge 7"0"	RT.59	TG.6202/01
September, 1956		As above except for:- Electric Clock		CE.2154/00
	from May, 1959	Thermostat		85035/74
April, 1959 Overdrive	As above except for:- Speedometer		SN.5312/26	
"75" January, 1950 - November, 1950	Speedometer	S.533	SS.1301/01	232583
	Temperature Gauge 7"0"	RT.52	TG.3601/00	232587
	Fuel Gauge and Oil Level Indicator	POL.8	UF.1400	232568
	Tank Unit	TA.130	FT.5340/05	230215
	Sump Unit	SU.1	FT.6360/00	09068
	Electric Clock	C.123	CE.2539/01	232585
	Oil Pressure Switch	Z.124 PS.1224/10)	65M6	240526

*Denotes optional equipment

MODEL	EQUIPMENT	OLD CODE	NEW CODE	VEH.MAKER PART NO.
"75" December, 1950	As above except for: Speedometer	S.553	SN.5312/01	234373
	Temperature Gauge 7'0"	RT.59	TG.6202/01	234376
	Electric Clock	C.127	CE.2126/01	234372
"75" 1951	Speedometer	S.553	SN.5312/01	234373
	Panel complete	PA.127	IP.3205/01	234375
	Ammeter	AM.26	AM.6201/00	234377
	Fuel Gauge and Oil Level Indicator	POL.10	FG.6231/08	234378
	Temperature Gauge 8'6"	RT.59	TG.6202/01	234376
	Tank Unit	TA.130	FT.5340/05	230215
	Sump Unit	SU.1	FT.6360/00	29068
	Electric Clock	C.127	CE.2126/01	234372
	Oil Pressure Switch	Z.124 PS.1224/10	65M6	240526
	"75" 1952	Speedometer	S.592	SN.5312/10
Panel complete		PA.130	IP.3206/01	236651
Ammeter		AM.26	AM.6201/00	234377
Fuel Gauge and Oil Level Indicator		POL.12	FG.6231/03	234378
Temperature Gauge 9'0"		RT.59	TG.6202/01	234376
Tank Unit		TA.141	FT.5300/24	235818
Sump Unit		SU.1	FT.6360/00	29068
Electric Clock		C.127	CE.2126/01	234372
Oil Pressure Switch		Z.135 PS.1224/10	65M6	240526
"75" 1953 - Nov. 1955		As above except for:- Speedometer *	S.593	SN.6109/01
"75" Dec. 1955 - Aug. 1956	As above except for:- Temperature Gauge 7'0"	RT.59	TG.6202/01	270097
"75" Sept. 1956	As above except for:- Electric Clock		CE.2154/00	272663
"75" Aug.1958	As above except for:- Electric Clock		CE.3110/01	502090
"75" from May, 1959	As above except for:- Thermostat		85035/74	504560

*Denotes optional equipment

ROVER (cont'd)

MODEL	EQUIPMENT	OLD CODE	NEW CODE	VEH.MAKER PART NO.	
"90" Nov. 1953 - 1955	Speedometer 3.9:1 R.A.R.	51-115-312-17	SN.5312/17	244929	
	Speedometer 3.9:1 R.A.R.	51-118-506-03	SN.6109/03	244931	
	Speedometer 4.3:1 R.A.R.	S.592	SN.5312/10	237517	
	Speedometer 4.3:1 R.A.R.	S.593	SN.6109/01	236460	
	Panel complete	PA.130	IP.3206/01	236651	
	Fuel Gauge and Oil Level Indicator	POL.12	FG.6231/03	236652	
	Ammeter	AM.26	AM.6201/00	234377	
	Temperature Gauge 9"0"	RT.59	TG.6202/00	234376	
	Tank Unit	TA.141	FT.5300/24	235818	
	Sump Unit	SU.1	FT.6360/00	09068	
	Electric Clock	C.127	CE.2126/01	234372	
	Oil Pressure Switch	Z.135 PS.1224/10)	65M6	240526	
	"90" Dec. 1955 - Aug. 1958	As above except for:- Temperature Gauge 7"0"	RT.59	TG.6202/01	270097
"90" Aug. 1958 - May 1959	As above except for:- Electric Clock		CE.3110/01	502090	
"90" May 1959	As above except for:- Thermostat		85035/74	504560	
"90" with Overdrive Jan. 1955 - Nov. 1955	Speedometer		SN.5312/24	268671	
	Panel complete	PA.130	IP.3206/01	236651	
	Fuel Gauge and Oil Level Indicator	POL.12	FG.6231/03	236652	
	Ammeter	AM.26	AM.6201/00	234377	
	Temperature Gauge 9"0"	RT.59	TG.6202/00	234376	
	Tank Unit	TA.141	FT.5300/24	235818	
	Sump Unit	SU.1	FT.6360/00	09068	
	Electric Clock	C.127	CE.2126/01	234372	
	Oil Pressure Switch	Z.135 PS.1224/10)	65M6	240526	
	"90" with Overdrive Dec. 1955 - Apr.1956	As above except for:- Temperature Gauge 7"0"	RT.59	TG.6202/01	270097
	"90" with Overdrive May, 1959	As above except for:- Thermostat		85035/74	504560

MODEL	EQUIPMENT	OLD CODE	NEW CODE	VEH.MAKER PART NO.
P4. "80" Sept. 1959 - June 1961	Speedometer Panel complete Fuel Gauge Temperature Gauge Electric Clock Tank Unit		SN.5323/00 IP.3206/02 FG.6231/03 TG.6202/01 CE.3110/01 FT.5300/24	513068 512302 236652 276917 502090 253818
P4. "80" July 1961	As above except for:- Electric Clock		CE.3110/02	
P4. "100" Sept. 1959 - June 1961	Speedometer Panel complete Fuel Gauge Temperature Gauge Electric Clock Sump Unit Thermostat		SN.5323/04 IP.3206/01 FG.6231/03 TG.6202/01 CE.3110/01 FT.6360/00 85035/76	512397 276916 236652 276917 502090 09068 513649
P4. "100" July 1961	As above except for:- Electric Clock		CE.3110/02	
P4. "95" Saloon	Speedometer Panel Fuel Gauge Temperature Gauge Temperature Transmitter Tank Unit Voltage Regulator Sump Unit	TT.3802/00	SN.6131/08 IP.3224/01 BF.6105/00 BT.6105/00 97M4 TF.2001/500 BR.1301/00 FT.6362/00	533365 536030 536032 536035 536132 536036 531651 531618
P4. "110" Saloon	Speedometer Panel complete Temperature Gauge Fuel Gauge Temperature Transmitter Tank Unit Voltage Regulator Sump Unit	TT.3802/00	SN.6131/10 IP.3224/01 BT.6105/00 BF.6105/00 97M4 TF.2001/500 BR.1301/00 FT.6362/00	533367 536034 536035 536132 536032 536036 531651 531618
P5. 2.6 Litre	Speedometer Gear Box Panel complete Fuel Gauge Temperature Gauge Tank Unit Sump Unit Electric Clock Thermostat	85032/76	SN.5322/08 BG.2401/00 IP.3215/00 FG.6231/09 TG.6202/01 FT.5346/40 FT.6360/02 CE.3110/02 85035/76	533395 277741 503192 503341 276917 503599 503601 519895 513649

ROVER (cont'd)

48.

MODEL	EQUIPMENT	OLD CODE	NEW CODE	VEH. MAKER PART NO.
P5. 2.6 Litre Saloon	Speedometer	TT.3802/00	SN.6131/06	533369
	Panel complete		IP.3224/00	536031
	Fuel Gauge		BF.6105/01	536033
	Temperature Gauge		BT.6105/00	536035
	Temperature Transmitter		97M4.	536132
	Tank Unit		TFS.1016/500	536063
	Voltage Regulator		BR.1301/00	531651
	Sump Unit		FT.6362/00	531618
	Gear Box		BG.2401/00	277741
P5. 3 Litre with Standard Transmission	Speedometer	SN.5322/06	SN.5371/10	512692
	Panel complete		IP.3215/00	503192
	Fuel Gauge		FG.6231/09	503341
	Temperature Gauge		TG.6202/01	270097
	Tank Unit		FT.5346/40	503599
	Sump Unit		FT.6360/02	503601
	Electric Clock *		CE.3110/01	502090
from May, 1959	Thermostat		85035/76	513649
P5. 3 Litre with Overdrive	As above except for:-	SN.5322/04	SN.5371/08	512694
	Speedometer		BG.2401/00	277741
	Gear Box (Speedo.)		85035/74	504560
P5. 3 Litre with Automatic Transmission	As above except for:-	SN.5322/02	SN.5371/06	512696
	Speedometer			
P5. 3 Litre Saloon October, 1962	Speedometer (Overdrive)	TT.3802/00	SN.6131/00	533375
	4.3:1 R.A.R.			
	Speedometer (Auto Trans)		SN.6131/02	533373
	3.54:1 R.A.R.			
	Speedometer (Auto Trans)		SN.6131/12	533512
	3.9:1 R.A.R.			
	Panel complete		IP.3224/00	536031
	Temperature Gauge		BT.6105/00	536035
	Fuel Gauge		BF.6105/01	536033
	Temperature Transmitter		97M4.	536132
	Tank Unit		TFS.1016/500	536063
	Voltage Regulator		BR.1301/00	531651
	Sump Unit		FT.6362/00	531618
P5. 3 Litre Coupe October, 1962	Speedometer (Overdrive)	TT.3802/00	SN.6131/04	533371
	Speedometer (Auto Trans)		SN.6131/02	533373
	Speedometer (Auto Trans)		SN.6131/12	533512
	Gear Box		BG.2401/00	277741
	Temperature Gauge		BT.2205/00	531610
	Temperature Transmitter		97M4.	536132
	Fuel Gauge		BF.2207/00	531609

*Denotes optional equipment

MODEL	EQUIPMENT	OLD CODE	NEW CODE	VEH.MAKER PART NO.
P5. 3 Litre Coupe October, 1962 (Cont'd)	Tank Unit		TFS.1016/500	536063
	Voltage Regulator		BR.1301/00	531651
	Rev. Indicator		RVI.3600/00	531614
	Oil Gauge		PE.2403/00	537150
	Oil Transmitter		PT.1804/10	537138
	Sump Unit		FT.5362/00	531618
105R. Saloon Standard and De Luxe	Speedometer		SN.5312/26	272251
	Panel complete	PA.130	IP.3206/01	270015
	Fuel Gauge and Oil Level Indicator	POL.12	FG.6231/03	236652
	Ammeter	AM.26	AM.6201/00	234377
	Temperature Gauge	RT.59	TG.6202/01	270097
	Oil Pressure Switch *	Z.135 PS.1224/10)	65M6	240526
	Tank Unit	TA.141	FT.5300/24	235818
	Sump Unit	SU.1	FT.6360/00	09068
	Electric Clock		CE.2154/00	272663
	from May, 1959	Thermostat		85035/74
from August, 1958	As above except for:- Electric Clock		CE.3110/01	502090
105S. Saloon	As 105R Saloon except for:- Speedometer		SN.5312/24	268671
2000 (P.6)	Instrument Assy.Complete		IA.1001/00A	545435
	Combined Instrument		SR.8301/00A	545452
	Speedometer only		SR.8301/02A	545454
	Fuel Gauge		BF.8101/03	536966
	Temperature Gauge		BT.8101/02	536967
	Voltage Regulator		BR.1301/00	531651
	Gear Box		BG.2401/00	277741
	Temperature Transmitter		TT.4801/00	536131
	Tank Unit		TFS.9910/00	526387
	* Denotes optional equipment			

MODEL	EQUIPMENT	OLD CODE	NEW CODE	VEH.MAKER PART NO.
SM.1500 from 1950	Speedometer Oil Gauge Fuel Gauge Electric Clock Tank Unit	SS.504 OG.84 PG.126 C.117 TA.121	SS.1501/03 PG.3600/03 FG.4635/00 FT.5366/06	
from 1951	As above except for:- Speedometer	S.572	SS.1501/11	
from April, 1952	As above - add:- Thermostat	X.43605/1	X.85035/70	C.10800
from 1953	Speedometer Panel Oil Gauge Fuel Gauge Electric Clock Tank Unit Thermostat	S.605 PA.136 OG.101 PG.156 C.137 TA.121 X.43605/1	SN.5310/22 IP.3207/06 PG.6201/20 FG.6237/02 CE.2152/07 FT.5366/06 X.85035/70	C.10800
from July, 1954	As above except for:- Speedometer	51-115-310-24	SN.5310/24	
Hunter - 1955	Speedometer Panel Oil Gauge Fuel Gauge Tank Unit Electric Clock Thermostat	51-115-310-24 PA.136 OG.101 PG.156 TA.121 C.137 X.43605/1	SN.5310/24 IP.3207/06 PG.6201/20 FG.6237/02 FT.5366/06 CE.2152/07 X.85035/70	C.10800
1956	Speedometer Panel Fuel Gauge Oil Gauge Temperature Gauge Tank Unit Temperature Transmitter Electric Clock Thermostat	Y.65716 X.76207 X.43605/1	SN.6306/00 IP.4302/00 FG.6240/00 PL.6204/00 TE.6207/00 FT.5366/06 TT.1200/00 CE.2152/06 X.85035/70	C.10800
Gazelle Series I	Speedometer Panel Fuel Gauge Oil Gauge Panel Temperature Gauge	SN.6154/00	SN.6160/00 IP.2100/05 FG.6232/01 PL.6202/01 IP.2100/06 TE.6201/01	P.45864 P.45866 K.26275 K.26276 P.45867 K.26277

MODEL	EQUIPMENT	OLD CODE	NEW CODE	VEH.MAKER PART NO.
Gazelle Series I (Cont'd)	Tank Unit	Y.80084/2	FT.3315/00	P.45447
	Temperature Transmitter	X.76207	TT.1200/00	P.45152
	Thermostat	X.43605/18	X.85035/80	P.11537
	Electric Clock *	CE.2194/07	CE.2194/09	P.45578A
Gazelle Series II	As above except for:- Panel		IP.2100/07	P.46191
	Fuel Gauge		FG.6232/03	
	Tank Unit		FT.3345/02	P.46190
Gazelle Series II A	As above except for:- Panel		IP.2100/08	P.46310
	Oil Gauge		PL.6202/04	
Gazelle Series III	Speedometer	SN.6154/00	SN.6160/00	P.45864
	Panel		IP.2100/08	P.46310
	Fuel Gauge		FG.6232/03	
	Oil Gauge		PL.6202/04	
	Panel		IP.2100/06	P.45867
	Temperature Gauge		TE.6201/01	K.26277
	Tank Unit		FT.3345/02	P.46190
	Temperature Transmitter		TT.1200/01	P.46311
	Thermostat		X.85035/80	P.11537
	Electric Clock *	CE.2194/08	CE.2194/09	P.46242
Gazelle Series III A September, 1959	Speedometer		SN.6160/00	P.45864
	Speedometer (Auto Transmission)		SN.6160/03	1046490
	Panel		IP.2100/10	1203215
	Oil Gauge		PL.6202/04	
	Fuel Gauge		FG.6232/05	
	Panel		IP.2100/09	1203216
	Temperature Gauge		TE.6213/00	
	Temperature Transmitter		TT.1200/01	P.46311
	Tank Unit		FT.3346/00	1203408
	Electric Clock		CE.2194/09	P.46242
Thermostat		X.85035/80	P.11537	
Gazelle Series III B (with hypoid axle)	As above except for:- Speedometer		SN.6123/06	
	Speedometer (Auto Transmission)		SN.6123/08	
Gazelle Series III C Saloon	Speedometer (Stand Transmission)		SN.6123/16	1215322
	Speedometer (Auto Transmission)		SN.6123/18	1215324
		*Denotes optional equipment		

MODEL	EQUIPMENT	OLD CODE	NEW CODE	VEH. MAKER PART NO.
8 H.P. 1953 - 1959	Panel Speedometer Fuel Gauge Tank Unit Oil Unit	76580/8 51-118-402-15 76860/2 80087/2 } 80087/3 } 80106/1/5	SN.4402/09 SN.4402/15 FG.6234/05 FT.3345/01 PS.1127/05 or 65M5	201751 201753 107001 105350
30,000 cars	As above except for:- Fuel Gauge	76860/6	FG.6234/01	
10 H.P. 1'000's 1954 - 1956	As above except for:- Panel Speedometer	51-118-402-29 51-118-402-31	SN.4402/29 SN.4402/31	202051 202053
Family 10 February, 1956	As above except for:- Panel Speedometer	SN.6400/00 SN.6400/02	SN.6450/02	
Family 10 October, 1955 Australian built	As above except for:- Panel Speedometer		SN.4402/55 SN.4402/56	203068
10 H.P. Van and Pick-up October, 1955	As above except for:- Panel Speedometer	51-118-402-37 51-118-402-39	SN.4402/37 SN.4402/39	202255 202257
Vanguard 1948 - January, 1949	Speedometer Oil Gauge Fuel Gauge Tank Unit Temperature Gauge 6'6" Electric Clock Thermostat	69880.P UP.1002 UF.1210 65630 UT.1200 UC.2000 43580 43580/1 }	SS.1501/13 FG.3600/02 FG.4631/07 FT.5366/02 TG.4601/14 CE.2540/00 43580/7	57666 58051 58048 58049 58052 58050 60748
Vanguard Feb. 1949 - April, 1949	As above except for:- Speedometer	69880/10	SS.1501/07	62015
Vanguard May 1949 - Chassis No. 85001	As above except for:- Temperature Gauge 6'6"	UT.1203	TG.4601/02	100805
Vanguard Chassis No. 85001 (1951) - Chassis No. 96995	Speedometer Oil Gauge Fuel Gauge Tank Unit	70792/13 UP.1500 UF.1404 Y.65630	SS.1301/09 FG.3601/00 FG.4633/12 FT.5366/02	200539 101904 101905 58049

STANDARD (cont'd)

MODEL	EQUIPMENT	OLD CODE	NEW CODE	VEH. MAKER PART NO.
Vanguard Chassis No. 85001 (1951) - Chassis No. 96995 (Cont'd)	Temperature Gauge 6'6"	UT.1500	TG.4603/00	101906
	Electric Clock	UC.1403	CE.2539/03	101907
	Thermostat	43640	43640/5	101479
Vanguard Chassis No. 96966 - Chassis No. 99519	As above except for:-			
	Speedometer	70792/22	SS.1301/18	200759
	Oil Gauge	UP.1503	PG.3601/02	102715
	Fuel Gauge	UF.1407	FG.4633/13	102716
	Temperature Gauge 6'6"	UT.1505	TG.4603/03	102717
Electric Clock	UC.1406	CE.2539/06	102718	
Vanguard Chassis No. 99520 1952	As above except for:-			
Speedometer	70792/8	SS.1301/05	200759	
Vanguard Saloon MK.II. Jan 1953 1st 500 Cars	Speedometer	70792/33	SS.1301/24	201530
	Fuel Gauge	UF.1415	FG.4633/03	105766
	Tank Unit	80090/1	FT.2330/02	201404
	Oil Gauge	UP.1505	PL.4661/00	105618
	Temperature Gauge	UT.1513	TG.4603/09	
	Thermostat	43640/2) 43640)	43640/5	101479
	As above except for:-			
Oil Gauge	UP.1408	PL.4661/00	105618	
Vanguard Saloon MK.II - After interim Period	As above except for			
	Oil Gauge	UP.2000) UP.2000/1)	PL.4661/00	105618
	Temperature Gauge	UT.2003) UT.2003/1)	TL.4661/00	105622
	As Saloon except for:-			
Vanguard Estate Car, Pick-up Van	Fuel Gauge	UF.1416	FG.4633/04	105624
	Tank Unit	Y.65630	FT.5366/02	58049
Vanguard MK.III October, 1955	Speedometer		SS.2102/02	202727
	Panel		IM.2401/00	111402
	Ammeter		AM.6200/00	111404
	Temperature Gauge		TL.6200/00	111403
	Panel		IM.2401/01	111405
	Oil Gauge		PL.6200/00	111407
	Fuel Gauge		FG.6230/00	111406

MODEL	EQUIPMENT	OLD CODE	NEW CODE	VEH.MAKER PART NO.
Vanguard MK.III October, 1955 (Cont'd)	Tank Unit		FT.3331/00) FT.3331/01)	302236
	Thermostat and Housing	84600 84600/1 & 3)	84600/5	112040
	Thermostat only	43570/23	85025/76	115469
1957	As for October 1955 except for:- Panel		IM.2401/08	114901
	Panel		IM.2401/09	114902
	Thermostat		X.85025/76	115469
Vanguard MK.III October, 1957	As above except for:- Speedometer		SS.2806/00	204386
	Panel		IM.2401/20	118088
	Panel		IM.2401/21	118089
	Fuel Gauge		FG.6230/06	119076
	Oil Switch	80106/1/5	65M5	105350
MK.III 1956 Estate Car to Chassis No. V321400	As for October 1955 except for:- Panel		IM.2401/04	113643
	Fuel Gauge		FG.6230/02	113644
	Tank Unit		FT.3345/00	202982
	Thermostat	43570/23	85025/76	115469
Chassis No. V321401 April, 1957	As for Chassis No. V321400 except for:- Panel		IM.2401/08	114901
	Panel		IM.2401/12	114905
MK.III Commercial Front End October, 1957	Speedometer		SS.2806/02	204388
	Panel		IM.2401/20	118088
	Warning Light		WL.4006/00	
	Panel		IM.2401/21	118089
	Fuel Gauge		FG.6230/06	119076
	Tank Unit		FT.3345/03	204600
	Pressure Switch	80106/1/5) FS.1227/05)	65M5	105350
	Thermostat and Housing	84600/3	84600/5	112040
	Thermostat		85025/76	115469
	Oil Gauge		PL.6200/00	111407
	Temperature Gauge		TL.6200/00	111403
	Ammeter		AM.6200/00	111404
Vignale Saloon November, 1958	Speedometer		SS.2102/13	202727
	Panel		IM.2401/29	122341
	Ammeter		AM.6200/00	111404
	Fuel Gauge		FG.6230/07	122334

STANDARD (cont'd)

56.

MODEL	EQUIPMENT	OLD CODE	NEW CODE	VEH.MAKER PART NO.
Vignale Saloon November, 1958 (Cont'd)	Panel		IM.2401/08	114901
	Temperature Gauge		TL.6200/00	111403
	Oil Gauge		PL.6200/00	111407
	Tank Unit		FT.3331/01	302236
	Thermostat and Housing		84600/5	115470
	Thermostat		85025/76	115469
Vignale Borg-Warner Transmission	As for Standard Trans- mission except for:- Speedometer		SS.2102/12	203848
Vignale Denormanville Overdrive	As for Standard Trans- mission.			
Vignale Saloon Estate Car 1958	As for Vignale Saloon 1958 except for:- Panel Fuel Gauge		IM.2401/22 FG.6230/06	119076
Vignale IV & VI Saloon and Estate Car. Standard Model. Standard Transmission & Borg-Warner Automatic October, 1960	Speedometer		SS.2102/13	202727
	Panel		IM.2401/23	128914
	Oil Gauge		PL.6200/00	111407
	Temperature Gauge		TC.6207/00	128915
	Panel (Saloon)		IM.2401/33	130015
	Fuel Gauge (Saloon)		FG.6230/08	130013
	Ammeter		AM.6200/00	111404
	Panel (Estate Car)		IM.2401/31	128913
	Fuel Gauge (Estate Car)		BF.6101/00	128505
	Tank Unit (Saloon)		FT.3331/01	302236
	Tank Unit (Estate Car)		TF.1002/009	207528
	Transmitter (4 Cyl.)		TT.3800/00	126063
	Transmitter (6 Cyl.)		TT.4800/00	121997
	Voltage Regulator (Estate Car)		BR.1300/01	128484
	Thermostat Housing Cpte.		84600/5	115470
Thermostat (4 Cyl.)		85025/76	115469	
Thermostat (6 Cyl.)		85035/70	117730	
Vignale IV & VI Comm- ercial Front End	As above except for:- Speedometer Fuel Gauge Tank Unit Oil Gauge Temperature Indicator		SN.6122/10 BF.2201/00 TF.1002/009 PL.2302/13 TC.4303/01	207496 126499 207528 126059 128214

MODEL	EQUIPMENT	OLD CODE	NEW CODE	VEH.MAKER PART NO.
Vignale IV & VI Saloon and Estate Car Deluxe. Standard Transmission and Borg-Warner Transmission.	Speedometer			
	550/590 x 15 Tyres		SN.6122/00	206783
	Speedometer			
	600/640 x 15 Tyres		SN.6122/04	206787
	Fuel Gauge (Saloon)		FG.2333/01	126062
	Fuel Gauge (Estate)		BF.2201/00	126499
	Tank Unit (Saloon)		FT.3331/01	302236
	Tank Unit (Estate)		TF.1002/009	207528
	Oil Gauge		PL.2302/13	126059
	Temperature Indicator		TC.4303/01	128214
	Transmitter (4 Cyl.)		TT.3800/00	126023
	Transmitter (6 Cyl.)		TT.4800/00	121997
	Voltage Regulator (Estate)		BR.1300/01	128484
	Thermostat Housing Cpte.		84600/5	115470
	Thermostat (4 Cyl.)		85025/76	115469
Thermostat (6 Cyl.)		85035/70	117730	

SUNBEAM

MODEL	EQUIPMENT	OLD CODE	NEW CODE	VEH.MAKER PART NO.
Alpine Series I	Speedometer (Standard Trans.)	FT.5300/91	SN.6117/00	1046560A
	Speedometer (Overdrive)		SN.6117/01	1046609A
	Fuel Gauge		FG.2331/03	1046557
	Tank Unit		FT.5301/09	1046591
	Oil Gauge		PL.2303/00	1046559
	Temperature Gauge		TC.4304/00	1046558
	Temperature Transmitter		TT.4800/00	P.46371
	Rev. Indicator		RN.2310/00	1046561
	Thermostat		X.85035/80	P.11537
Electric Clock *	CE.2194/09	1046489A		
Alpine Series II	As above except for:- Speedometer (Overdrive with 5.90 x 13 tyres) Rev. Indicator		SN.6117/11 RN.2310/02	
Rapier Series I October, 1955	Electric Clock *	CE.2194/01	CE.2194/09	P.45578A
Rapier Series II May, 1959	Speedometer (Standard Trans.)	CE.2194/09	SN.5321/00	1202504
	Speedometer (Overdrive)		SN.5321/02	1202506
	Fuel Gauge		FG.2331/04	1202508
	Tank Unit		FT.3345/02	P.46190
	Oil Gauge		PL.2303/01	1202510
	Temperature Gauge		TC.4305/00	1202509
	Temperature Transmitter		TT.4800/00	P.46371
	Rev. Indicator		RN.1309/00	1202503
	Electric Clock		CE.2194/09	P.45578A
Rapier Series III September, 1959	Speedometer (Standard Trans.)		SN.5324/00	1203400
	Speedometer (Overdrive)		SN.5324/02	1203402
	Fuel Gauge		FG.2331/08	1203405
	Tank Unit		FT.3346/00	1203408
	Oil Gauge		PL.2303/03	1203407
	Temperature Gauge		TC.4304/02	1203406
	Temperature Transmitter		TT.4800/00	P.46371
	Thermostat		X.85035/80	P.11537
	Rev. Indicator		RN.1310/00	1203404
Rapier Series III with Hypoid Axle	As above except for:- Speedometer (Standard Trans.)		SN.5324/00	1203400
	Speedometer (Overdrive)		SN.5324/04	1208052

*Denotes optional equipment

MODEL	EQUIPMENT	OLD CODE	NEW CODE	VEH.MAKER PART NO.
Herald Saloon 1959 - 1960	Panel Speedometer Fuel Gauge Tank Unit Temperature Gauge Temperature Transmitter		SN.6401/08 SN.6401/10 FG.6235/06 FT.3331/06 TC.4303/02 TT.4800/00	
Herald 2 Seater Coupe and Convertible Special Saloon April 1959 - April 1961.	Speedometer Fuel Gauge Tank Unit Oil Pressure Switch Temperature Gauge Temperature Transmitter Thermostat	FG.2333/00 TC.4303/00	SN.6121/00 FG.2333/03 FT.3331/06 PS.5307/05 or 65M5 TC.4303/02 TT.4800/00 85035/80	205331 130412 205303 121398 130411 121997 122744
Herald T.1200 May, 1961	Speedometer Fuel Gauge Tank Unit Oil Pressure Switch Thermostat Temperature Gauge Temperature Transmitter		SN.6121/12 FG.2333/03 FT.3331/06 PS.5307/05 or 65M5 85035/80 TC.4303/02 TT.4800/00	205303 121398 122744 130411 121997
Mayflower Jan. 1950 - Dec. 1950	Speedometer Panel Oil Gauge Fuel Gauge Temperature Gauge Tank Unit	S.548 PA.124 OG.91 PG.141 RT.56 TA.133	SN.5311/01 IP.3205/00 PG.6601/00 FG.6231/01 TG.6202/00 FT.5320/18	200499 200476 101680 101679 101681 200477
Mayflower Jan. 1951 - March 1951	As above except for:- Speedometer	S.562	SN.5311/05	200747
Mayflower April, 1951	As above except for:- Panel Fuel Gauge Tank Unit	PA.128 PG.147 TA.143	IP.3205/02 FG.6231/02 FT.5366/08	102965 102723 200900
Renown 20ST. Saloon Jan. 1950 - Chassis TDB.2000	Speedometer Fuel Gauge Oil Gauge Temperature Gauge Tank Unit Electric Clock Thermostat	S.541 PG.140 OG.90 RT.55 TA.134 C.125 43580/1	SS.1301/03 FG.4633/10 PG.4602/00 TG.3601/01 FT.5366/02 CE.2539/02 43580/7	200321 101243 101242 101244 58049 101245 100802

MODEL	EQUIPMENT	OLD CODE	NEW CODE	VEH.MAKER PART NO.
Renown 2OST. Saloon TDB.2001 (1950) Dec. 1950	As above except for:- Temperature Gauge Thermostat	RT.57 43640/1	TG.3601/02 43640/3	SD.101937 101570
Renown 2OST. Saloon Jan. 1951 - June 1951	Speedometer Fuel Gauge Oil Gauge Temperature Gauge Tank Unit Electric Clock Thermostat	S.557 PG.146 OG.94 RT.60 TA.134 C.128 43640/1	SS.1301/15 FG.4633/14 PG.4602/02 TG.3601/03 FT.5366/02 CE.2539/05 43640/3	200745 102720 102719 102721 58049 102722 101570
Renown 2OST. Saloon July, 1951	As above except for:- Speedometer	S.573	SS.1301/22	200745
TR2 Sports Jan. 1953 - Sept. 1955 and TR3 Sports Oct. 1955 - Sept. 1957 Standard and Overdrive	Speedometer Rev. Indicator Fuel Gauge Tank Unit Oil Gauge Temperature Gauge Thermostat	S.628 RC.163 PG.163 TA.150 80085/1 80087/1 OG.103 RT.70 43570/17 43570/22	SN.6307/04 RN.1402/09 FG.2530/20 FT.3331/02 PL.2561/00 TL.2561/00 85025/70	108192 106970 106964 202137 106963 106965 107590
TR3 Sports Oct. 1957 - Dec. 1957	As above except for:- Speedo. 3.7.1.RAR Speedo. 4.1.1.RAR		SN.6307/04 SN.6307/08	108192 113631
TR3 Sports Feb. 1960	As above except for:- Speedo. 3.7.1.RAR Speedo. 4.1.1.RAR Rev. Indicator		SN.6319/00 SN.6319/02 RN.1411/00	
TR4 Sports	Speedo. 3.7.1. RAR Speedo. 4.1.1. RAR Fuel Gauge Tank Unit Oil Gauge Temperature Gauge Temperature Transmitter Voltage Regulator Rev. Indicator Thermostat Drive Gear and Bearing Assembly		SN.6313/09 SN.6313/11 BF.2301/00 TF.1002/077 PL.2561/00 BT.2300/00 TT.3802/00 BR.1300/01 RN.1409/02 85025/70 AG.1002/00	208062 208066 130539 208209 106966 131060 131062 128484 208090 117730 60259

TRIUMPH (cont'd)

MODEL	EQUIPMENT	OLD CODE	NEW CODE	VEH. MAKER PART NO.
TR4 Sports (Cont'd)	Drive Gear and Bearing Assembly		AG.1010/00	107749
	Bearing Assembly (Rev. Indicator)		41-281-304-00	132472
TR4 Sports from June, 1962	Speedo. 3.7.1. RAR		SN.6325/00	209182
	Temperature Gauge		BT.2203/00	133124
	Fuel Gauge		BF.2206/00	133118
	Tank Unit		TF.1002/500	209195
	Voltage Regulator		BR.1300/01	128484
	Rev. Indicator		RN.1417/00	209194
	Oil Gauge		PL.2302/22	133120
	Temp. Transmitter		TT.3802/00	131062
	Thermostat		85025/70	117730
	Drive Gear and Bearing Assembly		AG.1002/00	60259
	Drive Gear and Bearing Assembly (Rev. Indicator)		AG.1010/00	107749
		41-281-304-00	132472	
Spitfire	Speedometer		SN.6121/16	209540
	Temperature Gauge		BT.2204/01	134243
	Temperature Transmitter		TT.4801/00	137386
	Fuel Gauge		BF.2201/03	134242
	Tank Unit		TFS.3006/501	209542
	Rev. Indicator		RN.1319/00	209543
	Voltage Regulator		BR.1300/01	128484
"2000"	Speedometer		SN.5337/00	210628
	Gear Box		BG.2401/00	120694
	Panel complete		IP.3226/00	210630
	Fuel Gauge		BF.8109/00	137704
	Temperature Gauge		BT.8109/00	137702
	Temperature Transmitter		TT.4802/00	137705
	Voltage Regulator		BR.1300/01	128484
	Tank Unit		TFS.3116/500	21063

MODEL	EQUIPMENT	OLD CODE	NEW CODE	VEH.MAKER PART NO.
4/44	Speedometer Fuel Gauge Tank Unit Oil Gauge Temperature Gauge Temperature Transmitter Electric Clock	51-115-208-10 UF.1226 Y.80052 UP.1000 UT.1600 X.76207 X.69983/2	SN.5208/10 FG.4631/03 FT.5300/52 PG.3600/00 TE.4604/00 TT.1200/00 CE.2202/02	185938 185144 185128 118623 184902 184903 185939
from 1954	As above except for:- Speedometer Electric Clock	51-115-208-13 X.69983/3	SN.5208/13 CE.2202/03	ADG.837 ADG.835
from 1955	As above except for:- Speedometer		SN.5207/14	ADG.1711
4/50	Speedometer Oil Gauge Fuel Gauge Tank Unit Electric Clock	X.69842 UP.1000 UF.1208 Y.65706 X.69864	SN.5207/02 PG.3600/00 FG.4631/06 FT.5300/45 CE.2250/01	118621 118623 118622 131872 118620
6/80	Speedometer Oil Gauge Fuel Gauge Tank Unit Electric Clock Thermostat	X.69842/4 UP.1000 UF.1214 Y.70203 X.69864 X.43605	SN.5207/02 PG.3600/00 FG.4631/08 FT.5346/21 CE.2250/01 85035/70	118833 118623 118689 132720 118620 164136
from 1949	As above except for:- Speedometer	X.69842/6	SN.5207/04	118833
"1500"	Speedometer Panel complete Fuel Gauge Oil Gauge Temperature Gauge Tank Unit Temperature Transmitter Thermostat	51-516-665-00 FT.5300/71	SN.6153/17 IP.3201/03 FG.6241/01 PL.6265/00 TC.6202/00 87M5 TT.3200/00 85025/74	21G.9074 21G.9008 21G.9011 1B.9012 21G.9010 21G.2054 17H.575 11G.291
15/60	Speedometer Panel complete Fuel Gauge Oil Gauge Temperature Gauge Tank Unit Temperature Transmitter Electric Clock Thermostat	FT.5301/01	SN.6115/02 IP.3216/00 FG.6248/00 PL.6268/00 TC.6211/00 87M10 TT.3800/00 CE.3112/01 85025/74	AYH.9067 BCA.4240 BCA.4243 BCA.4242 BCA.4241 1H.2153 13H.136 BCA.4244 11G.291

WOLSELEY (cont'd)

MODEL	EQUIPMENT	OLD CODE	NEW CODE	VEH.MAKER PART NO.
6/90	Speedometer Panel complete Oil Gauge Fuel Gauge Temperature Gauge Tank Unit Temperature Transmitter Electric Clock Thermostat	51-115-409-00 X.80440 X.80520/3 X.80095/3 X.80540/1 Y.80858 X.76207/1 51-412-540-00 X.43570/28	SN.5409/00 IP.4300/03 PL.6262/00 FG.6243/01 TE.6400/00 FT.5346/15 TT.1200/01 CE.3501/00 85025/74	ADC.1606 ADC.1608 AJC.5066 AJC.5067 AJC.5068 ACB.5467 3H.2836 ADC.1609 11G.291
6/90 with Overdrive	As above except for:- Speedometer		SN.5409/10	17H.93
6/90. Series II and III	Speedometer Panel complete Fuel Gauge Oil Gauge Temperature Gauge Tank Unit Temperature Transmitter Electric Clock Thermostat	X.80095/3 Y.80858 X.43570/28	SN.5462/00 IP.4306/00 FG.6243/01 PL.6266/00 TC.6203/00 FT.5346/15 TT.3200/00 CE.3501/05 85025/74	17H.425 17H.426 AJC.5067 ACB.5467 17H.575 17H.427 11G.291
6/90. Series II and III with Overdrive or Auto. Transmission	As above except for:- Speedometer		SN.5462/02	17H.561
6/99	Speedometer Panel complete Fuel Gauge Temperature Gauge Oil Gauge Tank Unit Temperature Transmitter Electric Clock Gear Box (Speedo) Thermostat		SN.5415/00 IP.4306/05 FG.6243/05 TC.6212/00 PL.6266/01 FT.5300/78 TT.3800/00 CE.3506/00 BG.2401/00 85025/74	BCA.4254 BCA.4256 BCA.4257 BCA.4258 BCA.4259 BCA.4199 13H.136 BCA.4260 1H.3131 11G.291
24/80	Speedometer Panel complete Fuel Gauge Temperature Gauge Oil Gauge Tank Unit Electric Clock		84M4-1 48M5-1 58M16-1 92M7-1 61M9-1 87M10 CE.3112/01/M	AYB.9007 AYB.9076 HYL.2266 HYL.2267 HYL.2268 1H.2153 AYB.9027
6/110	Speedometer Gear Box Panel complete		SN.5420/00 BG.2401/00 IP.4312/00	BCA.4681 1H.3131 BCA.4683

MODEL	EQUIPMENT	OLD CODE	NEW CODE	VEH.MAKER PART NO.
6/110 (Cont'd)	Fuel Gauge Temperature Gauge Oil Gauge Tank Unit Temperature Transmitter Thermostat Electric Clock		FG.6240/30 TC.6217/01 PL.6204/05 FT.5300/78 TT.3800/00 85025/70 CE.3501/12	5L.47 13H.310 13H.136 BCA.4684