

SMITHS

ORIGINAL EQUIPMENT

Motorcycle Applications

ARIEL 1964

MODEL		SPEEDOMETER	TACHOMETER	CABLE COMPLETE	GEAR BOX
PIXIE		SSM 1100/00		DF 7231/00 2' 3"	BG 5351/000
LEADER	250cc	SSM 5003/00 (C)		DF 9111/02 3' 1"	
TS2 ARROW	250cc	SN 3170/28 SSM 2001/00 (D)		DF 1111/19 3' 1" DF 9111/02 3' 1"	

ARIEL 1965

MODEL		SPEEDOMETER	TACHOMETER	CABLE COMPLETE	GEAR BOX
PIXIE MOPED	50cc	SSM 1100/04		DF 7231/00 2' 3"	BG 5351/000
LEADER TS TWIN	250cc	SSM 5003/00A (C)		DF 9111/02 3' 1"	
ARROW TS TWIN STD.	199cc	SSM 2001/00		DF 9111/02 3' 1"	
ARROW SUPER TS TWIN SPORTS	250cc				

(C) With Trip
(D) Early 1964

B.S.A. 1964

MODEL		SPEEDOMETER	TACHOMETER	CABLE COMPLETE	GEAR BOX	
B1 SCOOTER B2 SCOOTER	}	SN 3170/18		DF 1106/14 4' 8½"		
B1S SCOOTER B2S SCOOTER		SN 3170/17		DF 1106/14 4' 8½"		
K1 BEAGLE	75cc	SSM 1100/00		DF 7231/00 2' 3"	BG 5346/421	
C15	250cc	SSM 2001/00		DF 9110/00 4' 10½"	BG 5330/847	
C15 TRIALS & CAT C15 STARFIRE ROADSTER C15 STARFIRE SCRAMBLER B40 ENDURO STAR	}	SSM 5001/03 (B)		DF 9110/00 5' 1"	BG 5330/247	
B40 SS80 SS90		350cc 250cc 350cc	SSM 2001/02		DF 9110/00 4' 10½"	BG 5330/247
A50 STAR		500cc	SC 3313/00 (B)		DF 1110/20 3' 5"	
A50 CYCLONE A65 SPITFIRE HORNET		}	SSM 5001/03 (B)		DF 9110/02 3' 4"	
A65 THUNDERBOLT ROCKET			SSM 5001/03 (B)		DF 9110/02 3' 8"	
A65 LIGHTNING ROCKET		SSM 5001/03 (B)	RSM 3003/02	DF 9110/02 3' 8" DF 9110/00 2' 9"		
D7	175cc	SSM 2001/00		DF 9110/00 4' 10½"	BG 5330/847	

(B) With Trip.

SPEEDOMETER-TACHOMETER FLEXIBLE DRIVES

The nominal length of a flexible drive is measured between points A and B.

A. Drive End

Instrument End B.

DF 1111/15 Suitable for RC and RN series tachometers where a spade end is needed at the drive end.



DF 9110/- Suitable for new style RSM series tachometers where a standard cable end is needed at the drive end.



DF 9111/- Suitable for new style RSM series tachometers where a spade end is needed at the drive end.



B.S.A. 1965

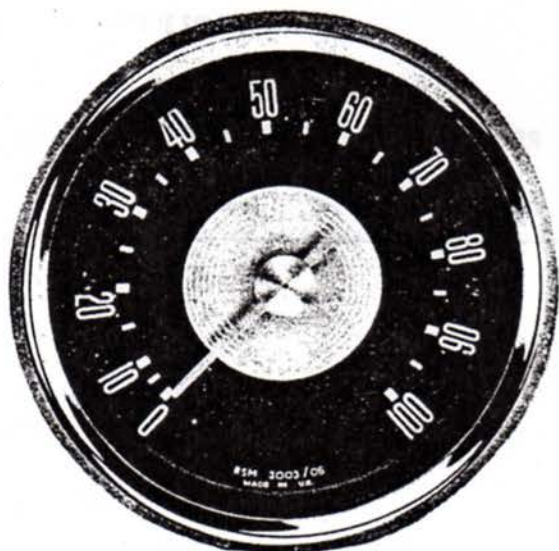
MODEL		SPEEDOMETER	TACHOMETER	CABLE COMPLETE	GEAR BOX
B1 SCOOTER	}	SN 3170/18		DF 1106/14 4' 8½"	
B2 SCOOTER					
B1S SCOOTER	}	SN 3170/17		DF 1106/14 4' 8½"	
B2S SCOOTER					
K1 BEAGLE	75cc	SSM 1100/00		DF 7231/00 2' 3"	BG 5346/421
C15 STAR	250cc 175cc	SSM 2001/00		DF 9110/00 4' 10½"	BG 5330/847
D7 STAR					
C15 TRIALS & CAT	}	SSM 5001/03A		DF 9110/00 5' 1"	BG 5330/247
C15 STARFIRE ROADSTER					
C15 STARFIRE SCRAMBLES					
B40 ENDURO STAR					
SS80	250cc	SSM 2001/02		DF 9110/00 4' 10½"	BG 5330/847
SS90	350cc 350cc	SSM 2001/02		DF 9110/00 4' 10½"	BG 5330/247
B40					
A50 STAR	}	SSM 4001/00A		DF 9110/02 3' 4"	
A65 STAR					
A50 ROYAL STAR					
A65 ROYAL STAR					
A50 CYCLONE	}	SSM 5001/03A		DF 9110/02 3' 4"	
A65 SPITFIRE HORNET					
A65 THUNDERBOLT ROCKET	}	SSM 5001/03A		DF 9110/02 3' 8"	
A65 LIGHTNING ROCKET					
DAYTONA RACER	500cc		RSM 3003/06 (E)	DF 9110/00 2' 9"	
			RSM 3003/06	N.O.M.	

(E) Optional Tachometers
 RSM 3003/02 0-8000 RPM
 RSM 3003/04 0-9000 RPM
 RSM 3003/06 0-10,000 RPM

B.S.A. 1966

MODEL		SPEEDOMETER	TACHOMETER	CABLE COMPLETE	GEAR BOX
D7 BANTAM SUPER	173cc	SSM 2001/00		DF 9110/00 4' 10½"	BG 5330/847
C15 STAR	249cc	SSM 2001/00		DF 9110/00 5' 1"	BG 5330/847
C15 SPORTSMAN	249cc	SSM 2001/02		DF 9110/00 5' 1"	BG 5330/847
C25 B40 STAR	249cc 350cc	SSM 2001/02		DF 9110/00 5' 1"	BG 5330/247
B44 ENDURO	440cc		SSM 5001/03A	RSM 3003/06 (E)	DF 9110/00 5' 1" DF 9110/00 2' 9"
A50 ROYAL STAR A65 THUNDERBOLT A65 LIGHTNING	500cc 650cc 650cc	SSM 5001/03A		DF 9110/02 5' 6" DF 9110/00 2' 9"	BG 5330/111
A50 WASP A65 LIGHTNING (HAP-WEST) USA A65 SPITFIRE STD. A65 SPITFIRE II	500cc 650cc 650cc 650cc		SSM 5001/03A	RSM 3003/06 (E)	DF 9110/02 5' 6" DF 9110/00 2' 9"

(E) Optional



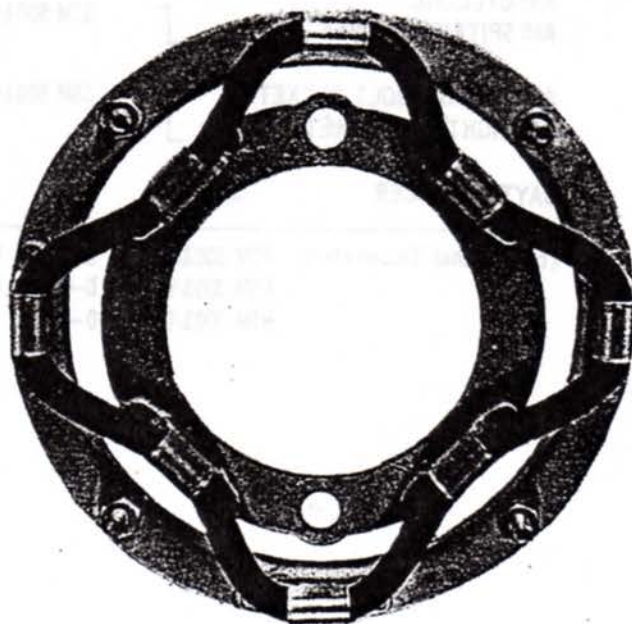
COMPETITION TACHOMETER

RSM 3003-series, maximum R.P.M. 10,000

Ratio: 3:1, rotation clockwise

This 3½" tachometer has a handsome dark gray dial with a light gray center, white figures and a red pointer with a chrome hub.

It has a chrome bezel and is wired for internal illumination. The case is 3⅛" diameter and 1½" deep. Mounting studs are 2-9/16" between centers.



ANTI-VIBRATION MOUNTING RING

MS 1001 series

A light and strong steel 4" outer ring with a flange for added rigidity has 4 screws for mounting. The 3" inner ring floats on a rubber shock cord with 8 suspension points and has two holes 2-9/16" between centers to accept the tachometer.

B.S.A. 1967

MODEL		SPEEDOMETER	TACHOMETER	CABLE COMPLETE	GEAR BOX
D10 SILVER BANTAM	175cc	SSM 2001/00		DF 9110/00 4' 10½"	
D10 BANTAM BUSHMAN	175cc				
D10 BANTAM SPORTS	175cc				
D10 BANTAM BUSHMAN	175cc	SSM 2001/00		DF 9110/00 4' 10½"	
C15 STAR	250cc	SSM 2001/02		DF 9110/00 5' 1"	
C25 BARRACUDA	250cc	SSM 5001/03A	RSM 3003/06 (E)	DF 9110/00 5' 1" DF 9110/00 2' 9"	BG 5330/31
B44 VICTOR RDS	441cc	SSM 5001/03A	RSM 3003/06 (E)	DF 9110/00 5' 1" DF 9110/00 2' 9"	BG 5330/31
B44 VICTOR ENDURA	441cc	SSM 5001/05	RSM 3003/06 (E)	DF 9110/00 5' 1" DF 9110/00 2' 9"	BG 5330/171
A50 ROYAL STAR	500cc	SSM 5001/05	RSM 3003/06 (E)	DF 9110/02 5' 6" DF 9110/00 2' 9"	BG 5330/171
A65 THUNDERBOLT	650cc				
A65 LIGHTNING	650cc				
A65 SPITFIRE	650cc				
A65 HORNET	650cc				

(E) Optional

B.S.A. 1968

MODEL		SPEEDOMETER	TACHOMETER	CABLE COMPLETE	GEAR BOX
D10 SILVER BANTAM	175cc	SSM 2001/00		DF 9110/00 4' 10½"	BG 5330/847
D10 BANTAM SUPREME	175cc				
D14/4 BANTAM	175cc				
D14/4S BANTAM SPTS					
D14/4B BUSHMAN					
C25 BARRACUDA	250cc	SSM 5001/03A		DF 9110/00 5' 3"	BG 5330/31
STARFIRE					
B44 VICTOR RDS	441cc				
SHOOTING STAR					
B44 VICTOR G P					
A50 ROYAL STAR	650cc	SSM 5001/05		DF 9110/02 5' 6"	BG 5330/171
A65 THUNDERBOLT					BG 5330/31
B44 VICTOR ENDURO					BG 5330/171
A65L LIGHTNING	650cc	SSM 5001/05	RSM 3003/06	DF 9110/02 5' 6" DF 9110/00 2' 9"	BG 5330/171
A65S SPITFIRE MK II	650cc				BG 5330/31
A65 HORNET	650cc				

(E) Optional

B.S.A. 1969

MODEL		SPEEDOMETER	TACHOMETER	CABLE COMPLETE	GEAR BOX
D14 BANTAM SUPREME	175CC)				
D14 BUSHMAN PASTORAL	175CC)	SSM 2001/00		DF 9110/00 4'10½"	BG 5330/847
B25 STARFIRE	250CC)	SSM 5001/03		DF 9110/00 5'3"	BG 5330/31
B44 SHOOTING STAR	441CC)		RSM 3003/01	DF 9110/00 2'6 3/4"	
B44 VICTOR SPECIAL	441CC)	SSM 5001/03		DF 9110/00 5'3"	BG 5330/171
			RSM 3003/01	DF 9110/00 2'6 3/4"	
A50 ROYAL STAR	499CC)			DF 9110/02 5'6"	BG 5330/171
A65 THUNDERBOLT	654CC)	SSM 5001/05		DF 9110/02 5'6"	BG 5330/31
A65L LIGHTNING	654CC)		RSM 3003/06	DF 9110/00 2'9"	
A65 SCRAMBLER	654CC)				
A75 ROCKET	750CC)	SSM 5001/05		DF 9110/00 5'8"	BG 5330/168
			RSM 3003/01	DF 9111/00 2'1"	

Oil Pressure Switch for 499-750CC Models PS 5300/1/07

B.S.A. 1970

MODEL		SPEEDOMETER	TACHOMETER	CABLE COMPLETE	GEAR BOX
B25 STARFIRE	250CC)	SSM 5007/02		DF 9110/00 5'3"	BG 5330/31
B44 SHOOTING STAR	441CC)		RSM 3003/14	DF 9110/00 2'6 3/4"	
B44 VICTOR SPECIAL	441CC)	SSM 5007/00		DF 9110/00 5'3"	BG 5330/171
			RSM 3003/14	DF 9110/00 2'6 3/4"	
A50 ROYAL STAR	499CC)			DF 9110/02 5'6"	BG 5330/171
A65 THUNDERBOLT	654CC)	SSM 5007/00		DF 9110/02 5'6"	BG 5330/31
A65L LIGHTNING	654CC)			DF 9110/02 5'6"	BG 5330/171
A65 SCRAMBLER	654CC)			DF 9110/02 5'6"	BG 5330/31
			RSM 3003/14	DF 9110/00 2'9"	
A75 ROCKET	750CC)	SSM 5007/00		DF 9110/00 5'8"	BG 5330/168
			RSM 3003/13	DF 9111/00 2'1"	

Oil Pressure Switch for 499-750CC Models PS 5300/1/07

MAKE & MODEL		SPEEDOMETER	TACHOMETER	CABLE COMPLETE	GEARBOX
BANTAM BUSHMAN PASTORAL	175CC 175CC	SSM 2001/00		DF 9110/00 4'10½"	BG 5330/847
B25SS GOLDSTAR	250CC	SSM 2001/07	RSM 2001/02	DF 9110/03 5'3" DF 9110/03 2'7"	BG 5330/24
B25T VICTOR TRAIL	250CC	SSM 2001/07	RSM 2001/02	DF 9110/03 5'3" DF 9110/03 2'7"	BG 5330/104
E35R FURY E35SS FURY	350CC) 350CC)	SSM 2001/07	RSM 2001/02	DF 9110/03 5'3" DF 9110/03 2'7"	BG 5333/247
GOLD STAR SS	500CC	SSM 5007/02	RSM 3003/13	DF 9110/03 5'3" DF 9110/03 2'7"	BG 5330/24
B50T VICTOR TRAIL	500CC	SSM 5007/02	RSM 3003/13	DF 9110/03 5'3" DF 9110/03 2'7"	BG 5330/104
A65T THUNDERBOLT A65L LIGHTNING A65FS FIREBIRD	650CC) 650CC) 650CC)	SSM 5007/00	RSM 3003/14	DF 9110/04 5'6" DF 9110/03 2'9"	BG 5330/164
A75R ROCKET 3	750CC	SSM 5007/00	RSM 3003/13	DF 9110/00 5'5" DF 9111/00 2'4"	BG 5330/164

Oil Pressure Switch for 500-750CC Models PS 5300/1/07

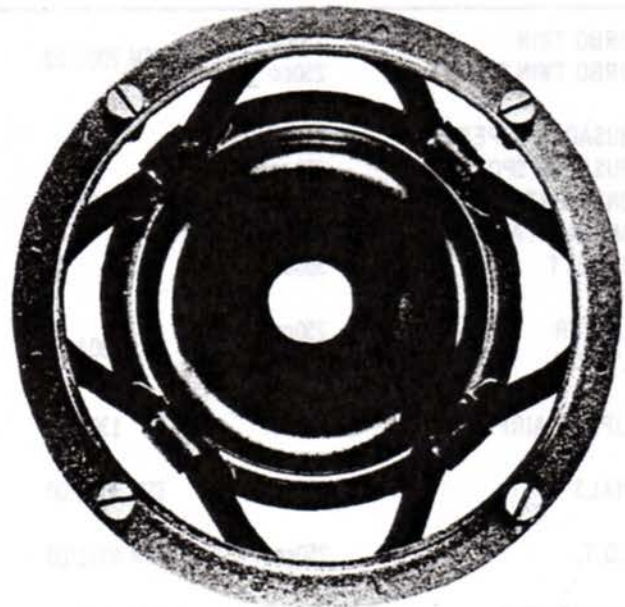
MAGNETIC TACHOMETER



Lightweight 60 mm Magnetic Revolution Indicator with anti-vibration mounting ring.

Now you can satisfy those many riders who have been requesting an accurate inexpensive quality magnetic tachometer suitable for racing and road use. Specify RPM, ratio and rotation:

NUMBER	RPM	RATIO	ROTATION
RN 1102/03	10,000	4:1	Counter clockwise
RN 1105/03	12,000	4:1	Counter clockwise
RN 1105/02	12,000	4:1	Counter clockwise
RN 1104/04	16,000	4:1	Counter clockwise



ANTI-VIBRATION MOUNTING RING

MS1003 series

This mounting ring is used with the magnetic tachometer and assures accurate, reliable RPM readings. It has a cup shaped inner ring to accept the tachometer and attaches to the stem of the flexible cable connection.

ENFIELD 1964

MODEL	SPEEDOMETER	TACHOMETER	CABLE COMPLETE	GEAR BOX
TURBO TWIN	250cc	SSM 2001/02	DF 9111/00 3' 4"	
CRUSADER SUPER 5	250cc	SC 1304/04	DF 1110/21 4' 4"	BG 5331/247
CRUSADER SPORTS	250cc		RC 1302/00 (E)	DF 1111/15 3' 7"
CONTINENTAL	250cc	SSM 2001/02	DF 9110/00 4' 5"	BG 5330/847
BULLETT	350cc		RSM 2001/00 (E)	DF 9111/00 3' 7"
CLIPPER	250cc	SC 1304/04	DF 1110/21 4' 4"	BG 5331/247
CLIPPER AIRFLOW	250cc		DF 1110/30 4' 9" (F)	
TRIALS	250cc	SSM 3002/00	DF 9110/00 4' 6"	BG 5331/247
I.S.D.T.	250cc	SSM 4001/00	DF 9110/00 4' 5"	BG 5331/247
W.D.	250 & 350cc	SSM 4001/02	DF 9110/00 4' 5"	BG 5331/247
INTERCEPTOR	692cc	SSM 3002/00	DF 9110/00 4' 10"	BG 5331/247
		RSM 3002/02	DF 9110/00 3' 7"	BG 1508/01

(E) Optional
(F) Clipper Airflow only.

ENFIELD 1965-8

MODEL	SPEEDOMETER	TACHOMETER	CABLE COMPLETE	GEAR BOX	
TURBO TWIN	250cc	SSM 2001/02	DF 9111/00 3' 4"		
TURBO TWIN SPORTS	250cc				
CRUSADER SUPER 5	250cc	SSM 2001/00	RSM 2001/00 (E)	DF 9111/00 4' 5"	
CRUSADER SPORTS	250cc			DF 9111/00 3' 7"	BG 5330/847
CONTINENTAL	250cc			BG 1508/04	
CONTINENTAL GT	250cc				
BULLETT	350cc				
CLIPPER	250cc	SC 1304/04	DF 1110/21 4' 4"	BG 5331/247	
OLYMPIC	250cc				
CLIPPER AIRFLOW	250cc	SC 1304/04	DF 1110/30 4' 9"	BG 5331/247	
TRIALS	250cc	SSM 3002/00	DF 9110/00 4' 6"	BG 5331/247	
I.S.D.T.	250cc	SSM 4001/00	DF 9110/00 4' 5"	BG 5331/247	
INTERCEPTOR	736cc	SSM 3002/00	DF 9110/00 4' 10"	BG 5331/247	
		RSM 3004/02 (E)	DF 9111/00 3' 7"	BG 1508/01	
			DF 9111/00 2' 10" (D)		
RACER	250cc	RN 1102/00	DF 1111/15 2' 10"	BG 1507/03	

(D) USA 1967-8
(E) Optional
(F) Clipper Airflow only.

ENFIELD 1969

MODEL	SPEEDOMETER	TACHOMETER	CABLE COMPLETE	GEAR BOX
INTERCEPTOR SERIES II 750CC)	SSM 3001/00	RSM 3003/03	DF 9110/00 4'10" DF 9111/03 2'5½"	BG 5331/104 BG 1508/01

ENFIELD 1970-72

MODEL	SPEEDOMETER	TACHOMETER	CABLE COMPLETE	GEAR BOX
INTERCEPTOR SERIES II 750CC)	SSM 3001/05	RSM 3003/03	DF 9110/00 4'10" DF 9111/03 2'5½"	BG 5331/107 BG 1508/01

GREEVES 1964

MODEL	SPEEDOMETER	TACHOMETER	CABLE COMPLETE	GEAR BOX
20 TE TRIALS	197cc	SSM 2001/00	DF 9111/00 4' 8"	BG 2504/01
24 TE TRIALS	250cc			
24 TRS TRIALS	250cc			
20 TE TRIALS	250cc	SSM 5002 00 (B)	DF 9111/00 4' 8"	BG 2504/01
24 TE TRIALS				
24 TE TRIALS				
24 MD	250cc	SSM 5002/00 (B)	DF 9111/00 4' 8"	BG 2504/01
24 MDS	250cc			
24 ME	250cc			
20 DC	248cc	SSM 2001/00 SN 3170/09 (D)	DF 9111/00 4' 8" DF 1111/16 4' 8"	BG 2504/01 BG 2504/01
25 DC	250cc			
25 DCX	250cc			
25 DD	250cc			
32 DC	325cc			
32 DCX	325cc			
32 DD	325cc			
RACER	250cc			
RACER SPECIAL	250cc	RN 1102/05 (E)	DF 1111/15 2' 2"	BG 2410/00 (F)

GREEVES 1965-6

MODEL		SPEEDOMETER	TACHOMETER	CABLE COMPLETE	GEAR BOX
20 TE TRIALS	197cc	SSM 2001/00		DF 9111/00 5' 0"	BG 2504/01
20 TE TRIALS	250cc				
24 TFS TRIALS	250cc				
20 TE TRIALS	250cc	SSM 5002/00 (B)		DF 9111/00 5' 0"	BG 2504/01
24 TE TRIALS					
24 TFS TRIALS					
24 MD					
24 MDS					
20 DC	248cc	SSM 2001/00		DF 9111/00 4' 8"	BG 2504/01
25 DC	250cc				
25 DCX	250cc				
25 DD	250cc				
32 DC	325cc				
32 DCX	325cc				
32 DD	325cc				
SILVERSTONE RACER	250cc		RN 1104/05 (C)	DF 1111/15 2' 2"	BG 1507/03 BG 2410/00 (D)

- (B) USA Market only
 (C) MS 1003/00 Mounting Ring required
 (D) Angle Drive at instrument end

GREEVES 1967-8

MODEL		SPEEDOMETER	TACHOMETER	CABLE COMPLETE	GEAR BOX
24 THS ANGLIAN TRIALS TRAILSTER	246cc	SSM 5002/00 (B)		DF 9111/00 5' 0"	BG 2504/01
24 THS ANGLIAN TRIALS	246cc	SSM 2001/00		DF 1111/19 2' 0"	
SILVERSTONE RACER	250cc		RN 1104/05 (C)	DF 1111/15 2' 2"	BG 1507/03 BG 2410/00 (D)

- (B) USA Market only
 (C) MS 1003/00 Mounting Ring required
 (D) Angle Drive at instrument end

MATCHLESS 1964

MODEL	SPEEDOMETER	TACHOMETER	CABLE COMPLETE	GEAR BOX
G50	496cc	ATRC 2652N (A)	DF 1111/15 1' 10"	BG 1507/00
G3	350cc	SSM 3002/00	RSM 3003/00 (E)	DF 9110/00 5' 7½" DF 9111/03 2' 8"
G80	500cc			
G12	650cc			
G12 CSR	650cc			
G2 CSR	250cc	SSM 2001/02	DF 9110/00 5' 2"	BG 5330/857
G15	}	SSM 3001/00	RSM 3003/00 (E)	DF 9110/00 5' 7½" DF 9111/03 2' 8"
G15 CS				
G 3C	350cc	SSM 3001/00	DF 9110/00 5' 7½"	BG 5330/1067
G80 CS	500cc			

(A) MS 1001/01 Mounting Ring required.
(E) Optional.

MATCHLESS 1965

MODEL	SPEEDOMETER	TACHOMETER	CABLE COMPLETE	GEAR BOX
G2 CSR	250cc	SSM 2001/02	DF 9110/00 5' 2"	BG 5330/857
G3 MERCURY	350cc	SSM 3002/00	RSM 3003/00 (E)	DF 9110/00 5' 5" DF 9111/03 2' 8"
G12 MAJESTIC	650cc			
G12 CSR MONARCH	650cc			
G80 MAJOR	500cc			
G12 CSR MONARCH	650cc	SSM 3002/00	DF 9110/00 5' 5" DF 9111/03 2' 8"	BG 5330/257 BG 1508/05
G15	745cc	SSM 3001/00	RSM 3003/00 (E)	DF 9110/00 5' 5" DF 9111/03 2' 8"
G15 CSR	745cc			
N15				
N15 CS				
G 3C	350cc	SSM 3001/00	RSM 3003/00 (E)	DF 9110/00 5' 7½" DF 9111/03 2' 8"
G 80CS	500cc			

(E) Optional.

MATCHLESS 1966-7

MODEL	SPEEDOMETER	TACHOMETER	CABLE COMPLETE	GEAR BOX	
G2 CSR MONITOR 90	248cc	SSM 2001/02	DF 9110/00 5' 2"	BG 5330/857	
G3 MERCURY	348cc	SSM 3002/00	DF 9110/00 5' 5"	BG 5330/257	
G12 MAJESTIC	646cc				
G12.CSR MONARCH	646cc				
G80 MAJOR	497cc				
		RSM 3003/00 (E)	DF 9111/03 2' 8"	BG 1508/05	
G80 CS	497cc	SSM 3001/00	DF 9110/00 5' 7½"	BG 5330/106	
			RSM 3003/00 (E)	DF 9111/03 2' 8"	BG 1508/05
G12 CSR	646cc	SSM 3001/00	DF 9110/00 5' 5"	BG 5330/257	
G15 CS	745cc				
G15 MK. 11	745cc				
G15	745cc				
		RSM 3003/00 (E)	DF 9111/03 2' 8"	BG 1508/05	

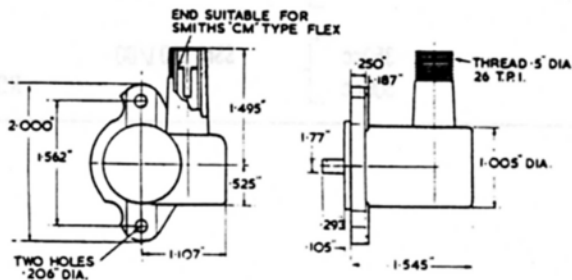
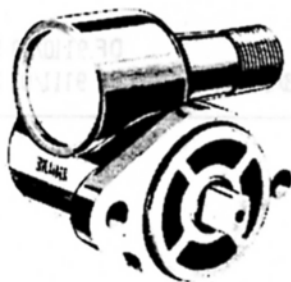
(E) Optional

MATCHLESS 1968

MODEL	SPEEDOMETER	TACHOMETER	CABLE COMPLETE	GEAR BOX
G80 CS	497cc	SSM 3001/00	DF 9110/00 5' 5"	BG 5330/106
		RSM 3003/00	DF 9111/03 2' 8"	BG 1508/05
G15 CS	745cc	SSM 3001/00	DF 9110/00 5' 5"	BG 5330/257
G15 MK II	745cc			
G15	745cc			
G15 CSR	745cc			
P11	750cc	RSM 3003/00	DF 9111/03 2' 8"	BG 1508/05

MATCHLESS 1969-72

MODEL	SPEEDOMETER	TACHOMETER	CABLE COMPLETE	GEAR BOX
P11A RANGER	750CC)	SSM 3001/00	DF 9110/00 5' 5"	BG 5330/257
		RSM 3003/00	DF 9111/03 2' 5"	BG 1508/05



BG 1508 Series (Replacing 70549 Series)

These gear boxes reverse the rotation of the shaft to which they are attached. The rotation is determined by looking immediately on to the end of the engine spindle with which the gear box or flexible drive is engaged.

Plain phosphor bronze bearings. Ratios 1:1 and 2:1.

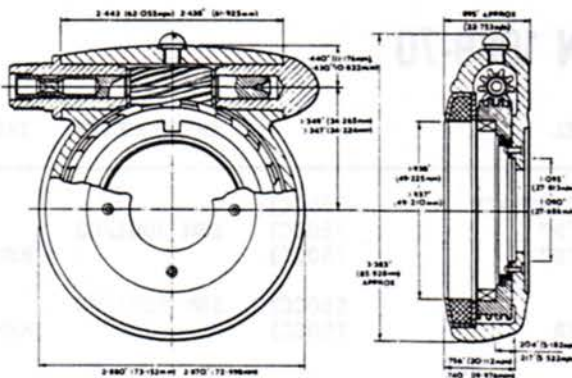
NORTON 1964

MODEL		SPEEDOMETER	TACHOMETER	CABLE COMPLETE	GEAR BOX
JUBILEE	249cc	SSM 2001/02		DF 9110/00 5' 2"	BG 5330/857
NAVIGATOR	350cc				
E S B	384cc	SSM 2001/02		DF 9110/00 5' 2"	BG 5330/257
88 SS	497cc	SSM 3002/00	RSM 3003/00	DF 9111/03 2' 8"	BG 1508/05
650/99	650cc				
MANXMAN	650cc				
ATLAS	750cc				

NORTON 1965

MODEL		SPEEDOMETER	TACHOMETER	CABLE COMPLETE	GEAR BOX
JUBILEE	250cc	SSM 2001/02		DF 9110/00 5' 2"	BG 5330/857
NAVIGATOR	350cc				
E S B	384cc	SSM 2001/02		DF 9110/00 5' 2"	BG 5330/257
ES 400	384cc				
88 SS	497cc	SSM 3002/00	RSM 3003/00 (E)	DF 9110/00 5' 7 1/2"	BG 5330/257
650 SS	650cc				
650/99	650cc	SSM 3001/00	RSM 3003/00 (E)	DF 9110/00 5' 9"	BG 5330/257
ATLAS	745cc				
50 MK II	348cc	SSM 3002/00	RSM 3003/00 (E)	DF 9110/00 5' 5"	BG 5330/257
ES 2 MK II	497cc				

(E) Optional.



HUB GEAR BOX

BG.5331 & BG.5333 Series

(Replacing 52283/50-88,
BG.5101 & BG.5103 Series)

This hub gear box has a thicker body section than those in the BG. 5303 Series (Previously 52283/1-49

Series) and uses the larger felt seal. It can be used where the hub is slotted to provide the necessary engagement or where other provision can be arranged. Clockwise or anti-clockwise input.

Ratios: 1:1 & 2:1

NORTON 1966-7

MODEL		SPEEDOMETER	TACHOMETER	CABLE COMPLETE	GEAR BOX
JUBILEE	249cc	SSM 2001/02		DF 9110/00 5' 2"	BG 5330/857
NAVIGATOR	349cc				
E S B	384cc	SSM 2001/02		DF 9110/00 5' 2"	BG 5330/257
E S 400	384cc				
88 SS	497cc	SSM 3002/00	RSM 3003/00 (E)	DF 9110/00 5' 7½"	BG 5330/257
650 SS SPORTS	647cc			DF 9111/03 2' 8"	BG 1508/05
650/99	650cc	SSM 3001/00	RSM 3003/00 (E)	DF 9110/00 5' 9"	BG 5330/257
ATLAS	745cc			DF 9111/03 2' 8"	BG 1508/05
N15					
N15 CS SCRAMBLER					
50 MK II	348cc	SSM 3002/00	RSM 3003/00 (E)	DF 9110/00 5' 5"	BG 5330/257
ES2 MK II	497cc			DF 9111/03 2' 8"	BG 1508/05

(E) Optional.

NORTON 1968

MODEL		SPEEDOMETER	TACHOMETER	CABLE COMPLETE	GEAR BOX
N15		SSM 3001/00	RSM 3003/00	DF 9110/00 5' 5"	BG 5330/257
N15 CS				DF 9111/03 2' 8"	BG 1508/05
650 SS		SSM 3001/00	RSM 3003/00	DF 9110/00 5' 9"	BG 5330/257
ATLAS	750cc			DF 9111/03 2' 8"	BG 1508/05
COMMANDO	745cc	SSM 3001/02	RSM 3003/10	DF 9110/00 5' 9"	BG 5330/171
				DF 9111/03 2' 8"	BG 1508/06

NORTON 1969-70

MODEL		SPEEDOMETER	TACHOMETER	CABLE COMPLETE	GEAR BOX
COMMANDO FASTBACK	750CC)	SSM 3001/02	RSM 3003/12	DF 9110/00 5' 9"	BG 5330/171
COMMANDO "R"	750CC)			DF 9111/03 2' 5"	BG 1508/06
COMMANDO "S"	750CC)				
MERCURY	650CC)	SSM 3001/00	RSM 3003/00	DF 9110/00 5' 5"	BG 5330/257
P11A RANGER	750CC)			DF 9111/03 2' 5"	BG 1508/05

NORTON 1971-72

COMMANDO	750CC	SSM 3001/09	RSM 3003/15	DF 9110/00 5' 9" DF 9111/03 2' 5"	BG 5330/171
----------	-------	-------------	-------------	--------------------------------------	-------------

TRIUMPH 1964

MODEL		SPEEDOMETER	TACHOMETER	CABLE COMPLETE	GEAR BOX
TINA SCOOTER	97cc	SSM 1100/00		DF 7250/00 2' 11½"	
T20	200cc	SSM 2001/00		DF 9110/00 4' 10" DF 9110/00 2' 10" (A)	BG 5330/847
T20 SH	200cc	SSM 2001/00	RSM 2002/00 (E)	DF 9110/00 4' 10" DF 9158/00 2' 10½"	BG 5330/247
T20 SS	200cc				
T20 TRIALS	200cc				
T20 SCRAMBLES	200cc				
TIGRESS TS1	175cc	SN 3170/18		DF 1106/14 4' 8½"	
TIGRESS TS2	250cc				
3 TA	348cc	SSM 5002/00		DF 9110/00 4' 10"	BG 5330/887
5 TA	490cc				
TIGER 100SS	500cc	SSM 5001/00		DF 9110/00 4' 10"	BG 5330/287
TIGER 100SC	500cc				
T90 SPORTS	500cc				
TR6 TROPHY	649cc	SSM 5001/00	RSM 3001/02	DF 9106/01 3' 4½" DF 9158/00 2' 10½"	
T120 BONNEVILLE	649cc				
6T THUNDERBIRD	649cc	SSM 5002/00		DF 9106/01 3' 8"	

(A) Competition Model only.
(E) Optional.

TRIUMPH 1965

MODEL		SPEEDOMETER	TACHOMETER	CABLE COMPLETE	GEAR BOX
TINA SCOOTER	97cc	SSM 1100/00		DF 7250/00 2' 11½"	
T20 TIGER CUB	200cc	SSM 2001/00		DF 9110/00 4' 10"	BG 5330/847
T20 SH TIGER CUB	200cc	SSM 2001/00	RSM 2002/00 (E)	DF 9110/00 4' 10" DF 9158/00 2' 10½"	BG 5330/247
T20 SS	200cc				
TR TRIALS CUB	200cc				
T20 SCRAMBLES	200cc				
TIGRESS SINGLE TSI	175cc	SN 3170/18		DF 1106/14 4' 8½"	
TIGRESS TWIN TW2	250cc				
3TA TWENTY ONE	348cc	SSM 5002/00		DF 9110/00 4' 10"	BG 5330/887
5TA SPEED TWIN	490cc				
T90 TIGER SPORTS	348cc	SSM 5001/00		DF 9110/00 4' 10"	BG 5330/287
T100SS TIGER SPORTS	490cc				
T100SC TIGER SPORTS	490cc				
TR6 SS TROPHY	649cc	SSM 5001/00	RSM 3001/02 (E)	DF 9106/01 3' 4½" DF 9158/00 2' 10½"	
T120 BONNEVILLE	649cc				
6T THUNDERBIRD	649cc	SSM 5002/00		DF 9106/01 3' 8"	

(E) Optional.

TRIUMPH 1966

MODEL		SPEEDOMETER	TACHOMETER	CABLE COMPLETE	GEAR BOX
T10 SCOOTER	97cc	SSM 1100/00		DF 7250/00 2' 11½"	
T20 TIGER CUB	200cc	SSM 2001/00		DF 9110/00 4' 10"	BG 5330/847
T20 BANTAM CUB	200cc	SSM 2001/00		DF 9110/00 4' 10½"	BG 5330/847
T20 SR T20 SH T20 SM T20 TRIALS		SSM 2001/00	RSM 2002/00	DF 9110/00 4' 10" DF 9158/00 2' 10½"	BG 5330/247
3TA TWENTY ONE 5TA SPEED TWIN	348cc 490cc	SSM 5002/00		DF 9110/00 4' 10"	BG 5330/287
T90 TIGER SPORTS T100 SC TIGER SPORTS T100 SR TIGER SPORTS	348cc 490cc 490cc	SSM 5001/00	RSM 3003/01 (E)	DF 9110/00 4' 10" DF 9111/00 2' 4"	BG 5330/287
TR6 SR TROPHY TR6 SC TROPHY T120 BONNEVILLE T120 THRUXTON BONNEVILLE	649cc 649cc 649cc 649cc	SSM 5001/00	RSM 3003/01 (E)	DF 9110/00 5' 5" DF 9111/00 2' 4"	BG 5330/287
6T THUNDERBIRD	649cc	SSM 5002/00		DF 9110/00 5' 5"	BG 5330/287

(E) Optional.

TRIUMPH 1967

MODEL		SPEEDOMETER	TACHOMETER	CABLE COMPLETE	GEAR BOX
T10 SCOOTER	97cc	SSM 1100/00		DF 7250/00 2' 11½"	
T20 TIGER CUB	200cc	SSM 2001/00		DF 9110/00 5' 1"	BG 5330/247
T20 BANTAM CUB	200cc	SSM 2001/00		DF 9110/00 4' 10½"	BG 5330/847
T90 TIGER SPORTS	348cc	SSM 5001/00	RSM 3003/01 (E)	DF 9110/00 4' 10" DF 9110/00 2' 4" DF 9111/00 2' 4"	BG 5330/287
T100 SS TIGER T100 ST DAYTONA	490cc 490cc	SSM 5001/00	RSM 3003/01 (E)	DF 9110/00 4' 10" DF 9110/00 2' 2½" DF 9111/00 2' 2½"	BG 5330/287
TR6 SR TROPHY TR6 SC TROPHY T120 BONNEVILLE	649cc 649cc 649cc	SSM 5001/00	RSM 3003/01 (E)	DF 9110/00 5' 5" DF 9111/00 2' 4"	BG 5330/287
TR6 SR TROPHY TR6 SC TROPHY T120 BONNEVILLE	649cc 649cc 649cc	SSM 5001/06 (L)	RSM 3003/01 (E)	DF 9110/00 5' 5" DF 9111/00 2' 4"	BG 5330/168

(E) Optional.

(L) 150 MPH Speedometer.

TRIUMPH 1968

MODEL	SPEEDOMETER	TACHOMETER	CABLE COMPLETE	GEAR BOX
T 10 SCOOTER AUTOMATIC	SSM 1100/00		DF 7250/00 2'11½"	
T 20 S/C SUPER CUB	SSM 2001/00		DF 9110/00 4'10½"	
TR 25 250cc	SSM 2001/02		DF 9110/00 5'3"	BG 5330/31
T 90 TIGER 90 T 100 T DAYTONA T 100 TIGER 100 T 100 S T 100 R	SSM 5001/00	RSM 3003/01 (E)	DF 9110/00 5'3"	BG 5330/287
			DF 9111/00 2'2½"	
T 100 C	SSM 5001/00		DF 9110/00 5'3"	BG 5330/287
TR 6 TROPHY	SSM 5001/06	RSM 3003/01	DF 9110/00 5'5" DF 9111/00 2'4"	BG 5330/287
TR 6 R TROPHY TR 6 C TROPHY T 120 BONNEVILLE T 120 R BONNEVILLE	SSM 5001/06	RSM 3003/01	DF 9110/00 5'5"	BG 5330/168
			DF 9111/00 2'4"	
P 2 TRIDENT 750 cc	SSM 5001/06	RSM 3003/09*	DF 9110/00 5'8" DF 9111/00 2'1"	BG 5330/168

* RSM 3003/09 changes to RSM 3003/01 after first 1200 bikes.
PS 5307/05 Oil Pressure Switch for TRIDENT

(E) Optional.

TRIUMPH 1969

MODEL	SPEEDOMETER	TACHOMETER	CABLE COMPLETE	GEAR BOX
T10 SCOOTER AUTOMATIC	SSM 1100/00		DF 7250/00 2'11½"	
TR 25W TROPHY	250CC) SSM 2001/02		DF 9110/00 5'3"	BG 5330/31
T100 (ALL)	500CC) SSM 5001/00	RSM 3003/01	DF 9110/00 5'3" DF 9111/00 2'2½"	BG 5330/287
T120 & T120R BONNEVILLE TR6-C-R TROPHY	650CC) SSM 5001/06	RSM 3003/01	DF 9110/00 5'5" DF 9110/00 5'5" DF 9111/00 2'4"	BG 5330/168 BG 5330/287
T150 TRIDENT	750CC) SSM 5001/06	RSM 3003/01	DF 9110/00 5'8" DF 9111/00 2'1"	BG 5330/168

Oil Pressure Switch 500-750CC Models PS 5330/1/07

TRIUMPH 1970

MODEL		SPEEDOMETER	TACHOMETER	CABLE COMPLETE	GEAR BOX
TR 25W TROPHY	250CC)	SSM 5007/02		DF 9110/00 5'3"	BG 5330/31
T100 (ALL)	500CC)	SSM 5007/02	RSM 3003/13	DF 9110/00 5'3" DF 9111/00 2'2½"	BG 5330/287
T120, TR6	650CC))	SSM 5007/00	RSM 3003/13	DF 9110/00 5'5" DF 9110/00 5'5" DF 9111/00 2'4"	BG 5330/168
T150	750CC)	SSM 5007/00	RSM 3003/13	DF 9110/00 5'8" DF 9111/00 2'1"	BG 5330/168

Oil Pressure Switch 500-750CC Models PS 5300/1/07

TRIUMPH 1971-72

25SS	BLAZER	250CC)	SSM 2001/07		DF 9110/03 5'3"	BG 5330/104
25T	BLAZER TRAIL	250CC)		RSM 2001/02	DF 9111/04 2'1"	
	BANDIT R	350CC)	SSM 2001/07		DF 9110/00 5'3"	BG 5330/247
	BANDIT SS	350CC)		RSM 2001/02	DF 9111/04 2'1"	
100C	TROPHY	500CC)	SSM 5007/02		DF 9110/00 5'3"	BG 5330/287
100R	DAYTONA	500CC)		RSM 3003/13	DF 9111/00 2'2½"	
120R	BONNEVILLE	650CC)				
16R	TIGER	650CC)	SSM 5007/00		DF 9110/04 5'6"	BG 5330/164
16C	TROPHY	650CC)		RSM 3003/13	DF 9111/04 2'6"	
150	TRIDENT	750CC)	SSM 5007/00		DF 9110/00 5'5"	BG 5330/168
				RSM 3003/13	DF 9111/00 2'4"	

Oil Pressure Switch for 650-750CC PS 5300/1/07

MODEL	SPEEDOMETER	TACHOMETER	CABLE COMPLETE	GEAR BOX
LE MK III	192CC	SSM 2001/06	DF 9111/01 2'9"	
VENOM CLUBMAN				
VENOM THRUXTON		SSM 5001/00	DF 9110/00 5'3"	BG 5331/247
CLUBMAN VEELINE MK II		RSM 3003/07	DF 9111/00 3'0"	BG 1507/02
VENOM SPORTS				
VENOM VEELINE		SSM 4001/00	DF 9110/00 5'3"	BG 5331/247
MSS		RSM 3003/07	DF 9111/00 3'0"	BG 1507/02

(E) Optional.

CABLE COMPLETE	INNER ONLY
DF 1106/14	DI 1124/00
DF 1110/00	DI 1110/00
DF 1110/20	DI 1124/00
DF 1110/21	DI 1124/00
DF 1110/24	DI 1124/00
DF 1110/30	DI 1124/00
DF 1111/00	DI 1110/02
DF 1111/15	DI 1111/00
DF 1111/17	DI 1111/00
DF 7231/00	NONE

CABLE COMPLETE	INNER ONLY
DF 7250/00	NONE
DF 9106/01	DI 1124/05
DF 9110/00	DI 1124/05
DF 9110/02	DI 1124/05
DF 9110/03	DI 9110/00
DF 9110/04	DI 9110/00
DF 9111/00	DI 1124/06
DF 9111/01	DI 1124/06
DF 9111/03	DI 1124/06
DF 9111/04	DI 9110/01
DF 9158/00	DI 1124/07

When ordering INNER CABLES use the same length as that specified for the COMPLETE CABLE.

COMPETITION TACHOMETERS

PART NUMBER	MAX. REVS.	RATIO	DIRECTION & SPECIAL FEATURES
ATRC 2652	9,000	4-1	CLOCKWISE
ATRC 2654	12,000	4-1	CLOCKWISE
ATRC 2654/1	12,000	4-1	ANTICLOCK
ATRC 2794	15,000	4-1	CLOCKWISE
ATRC 2794/1	15,000	4-1	ANTICLOCK
ATRC 3151	9,000	2-1	CLOCKWISE
ATRC 3541	10,000	2-1	CLOCKWISE
RC 83 (RC 1302/00)	8,000	2-1	CLOCKWISE
RC 87 (RC 1303/00)	8,000	2-1	ANTICLOCK
RC 90 (RC 1302/01)	8,000	2-1	CLOCKWISE
RC 95 (RC 1302/02)	8,000	4-1	CLOCKWISE
RC 103 (RC 1303/01)	8,000	4-1	ANTICLOCK
RC 109 (RC 1307/00)	10,000	4-1	ANTICLOCK
RC 115	8,000	4-1	ANTICLOCK
RC 120	12,000	4-1	CLOCKWISE
RC 121	9,000	2-1	CLOCKWISE
RC 126 (RC 1305/00)	8,000	2-1	CLOCKWISE
RC 127	9,000	4-1	CLOCKWISE
RC 130 EX 9	9,000	4-1	CLOCKWISE, ANGLE DRIVE, TEL TALE
RC 134 (RC 1501/00)	10,000	4-1	CLOCKWISE
RC 145	12,000	4-1	CLOCKWISE
RC 157 EX 1	12,000	2-1	CLOCKWISE, TEL TALE HAND
RC 157 EX 2	12,000	6-1	CLOCKWISE, TEL TALE HAND
RC 157 EX 4	12,000	4-1	CLOCKWISE, TEL TALE HAND
RC 158	12,000	4-1	CLOCKWISE
RC 166	8,000	2-1	ANTICLOCK, 5" TEL TALE HAND
RC 184	8,000	4-1	ANTICLOCK
RC 1301/00	8,000	444-1	CLOCKWISE, LIGHT, TEL TALE HAND
RC 1301/02	8,000	444-1	CLOCKWISE, B.T.T. FLANGE, LIGHT
RC 1302/00	8,000	2-1	CLOCKWISE
RC 1302/03	10,000	4-1	CLOCKWISE
RC 1302/04	8,000	3-1	CLOCKWISE
RC 1303/00	8,000	2-1	ANTICLOCK
RC 1303/01	8,000	4-1	ANTICLOCK
RC 1303/03	8,000	3-1	ANTICLOCK
RC 1304/00	8,000	4-1	CLOCKWISE
RC 1305/00	8,000	2-1	CLOCKWISE, LIGHT
RC 1307/00	10,000	4-1	ANTICLOCK, LIGHT
RC 1307/01	8,000	2-1	ANTICLOCK, LIGHT
RC 1307/02	10,000	2-1	ANTICLOCK, LIGHT
RC 1309/00	8,000	2-1	CLOCKWISE, LIGHT
RC 1310/02	10,000	2-1	CLOCKWISE
RC 1313/00	10,000	4-1	CLOCKWISE, LIGHT

COMPETITION TACHOMETERS (Continued)

PART NUMBER	MAX. REVS.	RATIO	DIRECTION & SPECIAL FEATURES
RN 1101/00	10,000	4-1	ANTICLOCK
RN 1102/00	10,000	4-1	"
RN 1102/02	8,000	2-1	"
RN 1102/03	10,000	4-1	"
RN 1104/02	12,000	4-1	CLOCKWISE
RN 1104/04	16,000	4-1	"
RN 1104/06	10,000	4-1	"
RN 1104/07	20,000	8-1	"
RN 1105/03	12,000	4-1	ANTICLOCK

RSM SERIES TACHOMETERS

PART NUMBER	MAX REVS.	RATIO	DIRECTION & SPECIAL FEATURES
RSM 2001/00	10,000	2-1	ANTICLOCK
RSM 2002/00	10,000	2-1	"
RSM 3001/01	10,000	4-1	"
RSM 3001/02	10,000	2-1	"
RSM 3002/00	8,000	2-1	CLOCKWISE
RSM 3002/01	10,000	4-1	"
RSM 3002/02	12,000	6-1	"
RSM 3003/00	8,000	2-1	"
RSM 3003/01	10,000	4-1	"
RSM 3003/02	8,000	3-1	"
RSM 3003/04	9,000	3-1	"
RSM 3003/06	10,000	3-1	"
RSM 3003/09	10,000	4-1	"
RSM 3003/10	9,000	4-1	"
RSM 3003/12	9,000	4-1	"
RSM 3003/13	10,000	4-1	"
RSM 3003/14	10,000	3-1	"
RSM 3003/15	9,000	2-1	"
RSM 3004/00	8,000	2-1	"
RSM 3004/01	10,000	4-1	ANTICLOCK
RSM 3004/02	8,000	4-1	"
RSM 3005/00	8,000	2-1	CLOCKWISE

GEAR BOXES

PART NUMBER	RATIO	OPERATION	PART NUMBER	RATIO	OPERATION
BG 1506/00	1-1	REVERSING	BG 2410/00	1-1	NONREVERSING
BG 1506/01	2-1	"	BG 2412/00	1-1	REVERSING
BG 1506/04	1-1	"	BG 5330/24		
BG 1507/00	2-1	NONREVERSING	BG 5330/31	2-1	REVERSING
BG 1507/02	2-1	REVERSING	BG 5330/104	21-10	"
BG 1507/03	4-1	"	BG 5330/106	21-10	REVERSING
BG 1507/06	8-1	"	BG 5330/111	21-10	"
BG 1507/07	8-1	NONREVERSING	BG 5330/164		
			BG 5330/168	15-12	REVERSING
BG 1508/00	1-1	REVERSING	BG 5330/171	15-12	"
BG 1508/01	2-1	"	BG 5330/247	2-1	"
BG 1508/04	1-1	"	BG 5330/257	2-1	"
BG 1508/05	1-1	"	BG 5330/287	2-1	"
BG 1508/06	1-1	"	BG 5330/847	19-20	"
			BG 5331/227	2-1	"
			BG 5331/247	2-1	"