

SUPPLIED BY
**TEAGLE. SMITH
LIMITED**

Branches Throughout New Zealand

application data for fitting

SMITHS

TRADE MARK

**WATER
TEMPERATURE
GAUGES**

WATER TEMPERATURE GAUGES

SMITHS Water Temperature Gauges are designed to be suitable for fitment to a wide range of cars. However owing to the variety of thread sizes and fittings on present day vehicles, difficulty may be experienced. This manual provides detailed application data and the recommendations given show the gauges that are suitable, and the fittings required for installation.

Fittings are specially designed to simplify installation and in some instances are included in the kit. However where other fittings are required they are listed under the Smiths Industries' code number.

For easy recognition SMITHS Water Temperature Gauges have been divided into four groups.

GROUP E

BOURDON TUBE TYPE



Codes

TG 1301/00AR
TG 1301/03AR
TG 1301/14R

DUAL GAUGES



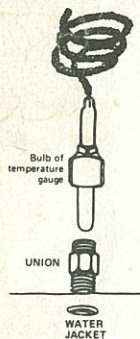
Codes

GD 1301/00
GD 1301/04
GD 1301/09

This refers to the Water Temperature part of the Dual Gauge only.

FITTING

The diagram illustrates the fitting of the capillary type Bourdon tube Temperature Gauge.



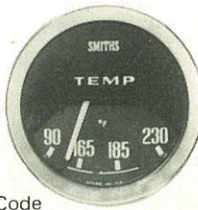
Group E instruments are suitable for vehicles with either 6 volt or 12 volt electrical systems, but the 12 volt bulb supplied must be changed if a 6 volt power supply is being used.

GROUP F

SEMI-CONDUCTOR TYPE

Codes

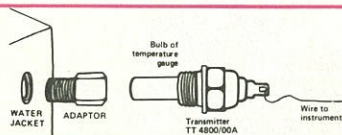
TC 4308/00
TC 4308/01
TC 4308/05



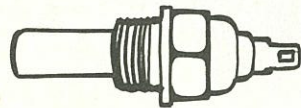
Transmitter Code
TT 4800/00A

FITTING

The Transmitter TT 4800/00A is screwed into the space provided in the water jacket, cylinder head or thermostat housing: the thread size of this transmitter is $\frac{5}{8}$ " U.N.F. and where this is not suitable, a range of adaptors is available. These can be used as illustrated below:



Group F instruments are only suitable for cars with 12 volt electrical systems.

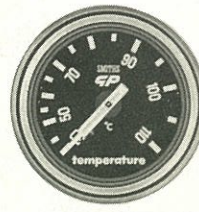


Temperature Transmitter Code TT4800/00A is available as a separate unit and used in conjunction with Adaptors TA5 and TA6, can be fitted to a wide range of cars.

GROUP G

G.P.

Codes
GTB
GTBF



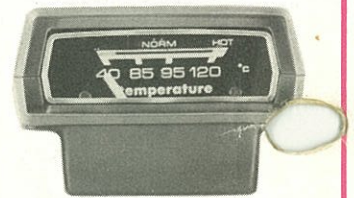
FITTING

These are basically similar to Group E gauges, since they are capillary-type Bourdon tube instruments. Fitting details are therefore similar.

Group G gauges are suitable for 6 volt or 12 volt electrical systems, but are supplied fitted with a 12 volt bulb.

GROUP H

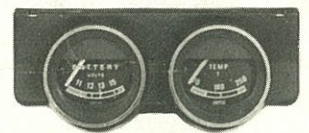
BIMETAL TOP DASH



Codes

TDT TDTF

TWINCHECK



Codes

TPP BTP
TPPM BTPF
TPPF

FITTING

Fitting details are exactly the same as for Group F semi-conductor type temperature indicators, except that the temperature transmitter is supplied in the kit of parts, and is the TT 6811/00 miniature $\frac{1}{8}$ " x 27 American Dryseal fitting. An adaptor will be required for any thread size other than this type, and TA2 is supplied in the kits. In certain instances it is not suitable and must be changed, and this is noted in the tables.

Group H instruments are only suitable for cars with 12 volt electrical systems.

APPLICATION DATA FOR FITTING WATER TEMPERATURE GAUGES

| Make & Model | Instr. Group | Transmitter Code | Adaptor Code | Union Code |
|--|------------------|------------------|------------------------|----------------|
| AMERICAN MOTORS 1965 on 8 & 6 cyl. with 1/8"x27. conn. | H | In kit | In kit not required | |
| AUSTIN 7. 850cc Std. & Auto Mini Std. 1100-2 Door Std. & Auto 1967-USA 1100/1300 MK II De Luxe 1967-69. | E F G H | TT.4800/00A | | TA.4 In kit |
| | | In kit | In kit | |
| BUICK 1962 | E F G H | TT.4800/00A | TA.5 | TA.8 TA.8 |
| | | In kit | TA.3 | |
| | | | | |
| 1963 - 66 | E F G H | TT.4800/00A | TA.5 | TA.8 TA.8 |
| | | In kit | TA.3 | |
| 1967 on | E F G H | TT.4800/00A | TA.5 | TA.8 TA.8 |
| | | In kit | TA.3 | |
| CADILLAC 1962 on | E F G H | TT.4800/00A | TA.5 | TA.8 TA.8 |
| | | In kit | TA.3 | |
| CHEVROLET 1962 - 63 | E F G H | TT.4800/00A | TA.5 | TA.8 TA.8 |
| | | In kit | TA.3 | |
| 1964 on Vega | E F G H | TT.4800/00A | TA.5 | TA.8 TA.8 |
| | | In kit | TA.3 | |
| CHRYSLER (EUROPE) Avenger 1250 Basic | E F G H | TT.4800/00A | | TA.4 In kit |
| | | In kit | In kit | |
| CHRYSLER (USA) 1964 on 1/4"x14 tpi Conn: for W/Light | E F G H | TT.4800/00A | TA.5 | TA.8 TA.8 |
| | | In kit | TA.3 | |
| | H | In kit | In kit not required | |
| DODGE-DART 6 & 8 Cyl. 1962 - 64 with 1/8"x27 Eng. Conn: for Gauge. | H | In kit | In kit not required | |
| | E F G H | TT.4800/00A | TA.5 | TA.8 TA.8 |
| | | In kit | TA.3 | |
| 6 & 8 Cyl. 1965 on with 1/2"x14 Eng. Conn: for W/Light | | | | |
| 6 & 8 Cyl. 1965 on with 1/8"x27 Eng. Conn: for Gauge. | H | In kit | In kit not required | |
| FORD - AUSTRALIA See Ford U.S.A. | | | | |
| FORD (D) All models | H | In kit | In kit not required | |

| Make & Model | Instr. Group | Transmitter Code | Adaptor Code | Union Code |
|---|------------------|------------------|------------------------------|--|
| FORD (G.B.) Consul Cortina Std. Sal. 1200cc - 1500cc to May 1965 approx. | E F | TT.4800/00A | In kit not required | TA.4 |
| | G H | In kit | In kit | In kit |
| | | | | |
| All models from June 1965 | H | In kit | In kit not required | |
| FORD (U.S.A.) Falcon-Fairlane 1963 - 66 with 1/8"x27 Eng. Connection | H | In kit | In kit not required | |
| | | | | |
| MUSTANG 1965 - 66 with 1/8"x27 Eng. Connection | H | In kit | In kit not required | |
| T-BIRD 1963 - 66 with 1/8"x27 Eng. Connection. | H | In kit | In kit not required | |
| CAPRI - PINTO 1600 with 1/8"x27 Eng. Connection. | H | In kit | In kit not required | |
| HOLDEN All models 1948 on | E F G H | TT.4800/00A | TA.5 TA.5 TA.5 TA.3 | In kit In kit |
| | | In kit | | |
| LINCOLN 1963 - 65 with 1/8"x27 Eng. Connection | H | In kit | In kit not required | |
| MERCURY 1963 - 65 with 1/8"x27 Eng. Connection | H | In kit | In kit not required | |
| MORRIS All models | E F G H | TT.4800/00A | | TA.4 In kit |
| | | In kit | In kit | |
| OLDSMOBILE 1962 on | E F G H | TT.4800/00A | TA.5 | TA.8 TA.8 |
| | | In kit | TA.3 | |
| PLYMOUTH 1964 on with 1/8"x27 Eng. Connection | H | In kit | In kit not required | |
| PONTIAC | E F G H | TT.4800/00A | TA.5 | TA.8 TA.8 |
| | | In kit | TA.3 | |
| RENAULT R4 - R6, 850 & 1100, R8, R10, R12 12 Volt | E G H | In kit | TA.10 | TA.11 TA.11 |
| | | | | |
| R4 to 1970 6 Volt | E G | | | TA.11 TA.11 |
| Note: | | | | 12V. Illumination Bulb fitted in gauge must be replaced by 6 volt. |

| Make & Model | Instr. Group | Transmitter Code | Adaptor Code | Union Code |
|--|------------------|-----------------------|------------------------------|------------------|
| ROVER Landrover Ser.11 & 11A. 88" & 109" W/Base 1958-67 Range Rover | E F G H | TT.4800/00A In kit | In kit | TA.4 In kit |
| VAUXHALL Viva - HA, HB, (excluding HB 1600) GT, HC 1159 & 1256cc. Viva & Firenza 2.3 Litre Firenza HC1159 1256cc VX 4/90 FD & FE | E F G H | TT.4800/00A In kit | TA.6 TA.6 TA.6 TA.1 | In kit In kit |
| Viva & Firenza, 1600, 1800, 2000 HC. Victor F, FB, FC. 1600 & 2000 FD Series,3000 FD, 1800 & 2300 FE Series (Eng. 25000 chas. OV.252009 to Jan 1970) 3300 FE. VX 4/90 F, FB, FC. Ventora FE. Velox & Cresta PA & PB. | E F G H | TT.4800/00A In kit | TA.5 TA.5 TA.5 TA.3 | In kit In kit |
| Ventora FD. Cresta & Viscount PC Victor 3300 FD (Chas. OV 252010 Jan. 1970 on) | E F G H | TT.4800/00A In kit | In kit | In kit In kit |

TEMPERATURE GAUGE ADAPTORS



| SALES CODE | DESCRIPTION |
|-------------|---|
| TA1 | Adaptor 3/8" BSP (M) - 1/8" NPT (F) |
| TA2 | Adaptor 3/8" UNF (M) - 1/8" NPT (F) |
| TA3 | Adaptor 1/2" NPT (M) - 1/8" NPT (F) |
| TA4 | Union 3/8" BSP (M) - 5/8" UNF (M) |
| TA5 | Adaptor 1/2" NPT (M) - 5/8" UNF (F) |
| TA6 | Adaptor 3/8" BSP (M) - 3/8" UNF (F) |
| TA8 | Union 3/8" BSP (M) - 1/2" NPT (M) |
| TA10 | Adaptor 18mm x 1.5mm (M) - 1/8" NPT (F) |
| TA11 | Union 18mm x 1.5mm (M) - 3/8" BSP (M) |



SMITHS INDUSTRIES LIMITED

MOTOR ACCESSORY SALES & SERVICE

EXPORT DEPARTMENT
Cricklewood London NW2 6NN
Telephone 01-452 3333 Telex 22671
Telegrams Speedofac London Telex