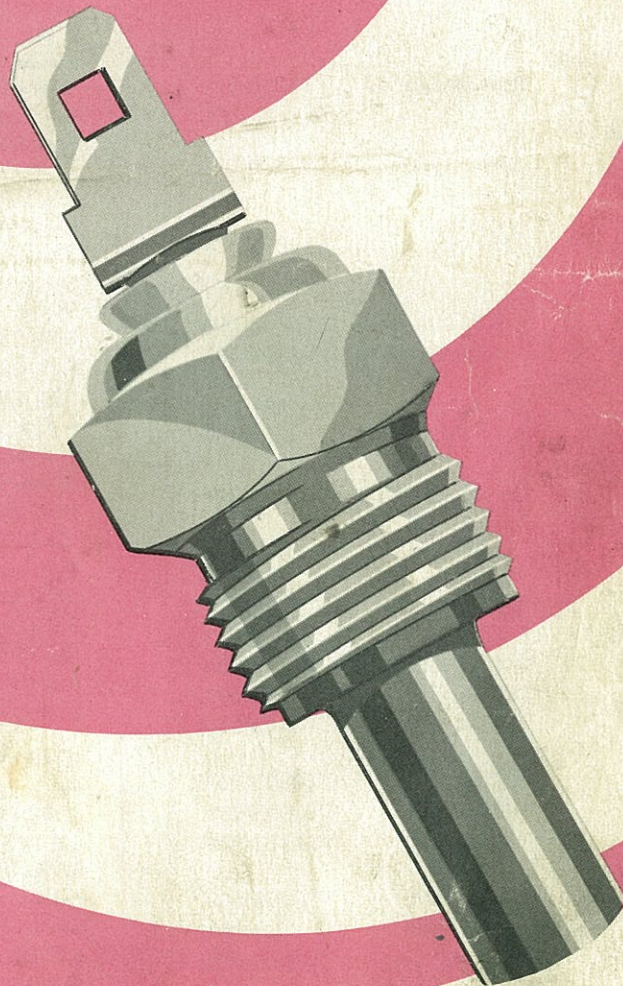


SMITHS

TRADE MARK

TEMPERATURE TRANSMITTERS



RECOMMENDATIONS

Car engines are designed to operate at optimum temperature to provide maximum economy, peak performance and to minimise engine wear. A temperature transmitter is subjected to continuous wear and may need replacing, so ask your garage to check it right away.

Recommendation list for Smiths Electric Temperature Gauge Transmitters

MAKE AND MODEL	YEAR	CODE
A.C.		
Greyhound (Bristol engine)	1960 on	TT3500/00A
Frau 428	May 70 on	TT6811/01
A.E.C.		
Regal IV & V	Feb. 61 on	TT5300/00
Mercury Mk.I	Feb. 61 on	TT5300/00
New Mercury 12 ton	Feb. 61 on	TT5300/00
Reliance Chassis type		
2 MU3 RA	1962 on	TT5300/00
Mandator Mk.II & V	Feb. 61 on	TT5300/00
New Mandator	July 63 on	TT5300/00
Monarch Mk.VI	Feb. 61 on	TT5300/00
Mammoth Major Mk.VI	Feb. 61 on	TT5300/00
Bonneted Mammoth 4 & 6	Feb. 61 on	TT5300/00
Bridgemaster	Feb. 61 on	TT5300/00
Durban	Feb. 61 on	TT5300/00
Marshall	Feb. 61 on	TT5300/00
Merlin-Merryweather	Feb. 61 on	TT5300/00
Mustang Mk.II	Feb. 61 on	TT5300/00
ALBION		
Chieftain, Claymore, Reiver, Victor & Clydesdale	Sept.58-Sept.60	TT1300/01
ARMSTRONG SIDDELEY		
Star Sapphire	1958 - 1960	TT3500/00A
ASTON MARTIN		
D.B.S.	1967 on	TT4802/00A
AUSTIN (CARS)		
Super Seven De Luxe	Oct.61-July 64	TT3800/00A
Super Seven De Luxe	Aug.64-Sept.67	TT3802/00A
Mini Mk.II 850cc. & 1000cc.		
Super De Luxe	Oct. 67 on	TT3802/00A
Cooper & Cooper "S"	Oct.61-Sept.64	TT3800/00A
Cooper, Cooper "S" 1000cc. & Cooper "S" 1275cc.	Oct.64-Sept.67	TT3802/00A
Cooper Mk.II & Cooper "S" Mk.II 1275cc.	Oct. 67 on	TT3802/00A
1100, 1100 Mk.II & 1300 Series	1963 - Sept.71	TT3802/00A
1100 Mk.III & 1300 Mk.III Series	Oct. 71 on	TT3803/00A
Maxi 1500 & 1750	1969 on	TT3803/00A
1800 & 1800 Mk.II	1964 on	TT3802/00A
Marina 1.8 & 1.8 GT (U.S.A. & Canada)	1972 on	TT3803/00A
2200	1972 on	TT3803/00A
A 40 Mk.II	1961 on	TT3802/00A
A55 Mk.II Cambridge & Countryman	1958 - 1961	TT3800/00A
A55 Van & Pick-Up	1962 - 1963	TT1800/00
½ ton Van & Pick-Up	July 1963 on	TT3800/00A
A 60 Cambridge & Countryman	Oct. 1961 on	TT3800/00A
A 99	1959 - 1961	TT3800/00A
A 110	1961 - May 64	TT3800/00A
A 110	June 64 on	TT3802/00
3 Litre	Oct. 67 on	TT3802/00A
Princess	1959 - July 63	TT3800/00A

MAKE AND MODEL	YEAR	CODE
AUSTIN (CARS) (Continued)		
Princess	Aug. 64 on	TT3802/00A
Civilian Champ	1953 on	TT1200/01
Gipsy	Sept. 63 on	TT3800/00A
FX 4 Taxi	58 - Sept. 71	TT3800/00A
FX 4 Taxi	Oct. 71 on	TT3803/00A
AUSTIN (COMMERCIAL)		
10/12 Cwt Van	Sept. 60 on	TT3800/00A
152 15 Cwt Van	June 56 on	TT1200/01
152 16/18 Van	1961 on	TT3800/00A
LD 4 A 15/25 Cwt	May 1960-Feb.61	TT1200/00
LD 4 A 15/25 Cwt	Mar. 61 on	TT3200/00A
LD 54 25/30 Cwt	May 60 - Feb.61	TT1200/00
LD 5 A 25/30 Cwt	Mar. 61 on	TT3200/00A
5 & 7 ton "FH" Cab Series I F/C U/Floor engine	1963 - 1964	TT3800/00A
Series III N/C 3, 5, 6, 7 ton & Prime Mover	Oct. 60 on	TT3800/00A
Series IV FG Cab 30 Cwt	Nov. 59 on	TT3800/00A
Series IV FG Cab 2, 3, 4, 5 ton	1959 on	TT3800/00A
Series IV 2, 3, 4 & 5 ton Low Loader	1963 - 1968	TT3800/00A
FG. Cab 2 & 3 ton with type 8 Borg Warner Auto. Trans.	Mar. 67 on	TT3800/00A
FG. Cab 1½, 2, 3, 4 & 5 ton	Aug. 69	TT3802/00A
Series IV 5 ton 504 & 7 ton 702 FF Cab	1958 - 1960	TT3200/00A
Series IV 5, 7 ton & Prime Mover	1960 on	TT3800/00A
F.M. Cab 2, 3 & 4 ton	Sept.66-June 68	TT3804/00A
F.M. Cab 2, 3 & 4 ton	July 68 on	TT3800/00A
350, 420 & 440 Van	Sept. 68 on	TT3804/00A
F.F. K. 240 12 ton	Apr. 61 on	TT3800/00A
W.F. Normal Control (Earth Return Wiring)	Oct.64-July 69	TT3802/00A
W.F. Normal Control (Earth Return Wiring)	Aug. 61 on	TT3804/00A
W.F. Normal Control (Insulated Return Wiring)	Oct. 64 on	TT6800/00
F.J. Cab Forward Control (Earth Return Wiring)	Oct. 64 on	TT3804/00A
F.J. Cab Forward Control (Insulated Return Wiring)	Oct. 64 on	TT6800/00
B.M.C. (COMMERCIAL)		
702 7 ton Forward Control "FF" Cab	June 58 on	TT3200/00A
CV 147 LR & CV 151 LR Series (Earth Return)	Oct. 68 on	TT3802/00A
CV 147 LR & CV 151 LR Series (Insulated Return)	Oct. 68 on	TT6802/00
CV 148 LR Series (Earth Return)	May 69 on	TT3802/00A
CV.148 LR Series (Insulated Return)(2 units fitted)	May 69 on	TT6802/00
BENTLEY		
S2, S3, "T" 32 & "T" S3 Series	59 - Sept. 65	TT3201/00
"T" Series	Oct.65-Sept.70	TT3800/00A

MAKE AND MODEL	YEAR	CODE
BOND		
Equipe	May 63 on	TT4801/00A
BRISTOL		
411	Oct.69-June 70	TT4803/00A
411	July 70 on	TT3803/00A
BRITISH LEYLAND (CARS)		
Mini Series	Oct. 69 on	TT3803/00A
BRITISH LEYLAND (COMMERCIAL)		
180 & 200 J4 Van & Pick-Up	Nov. 70 on	TT3802/00A
CITROEN (BRITISH BUILT)		
DS 19	Apr. 62 - 67	TT3800/00A
COMMER		
COB Series I & II	1958 - 1962	TT3200/00A
COB Series III	1963 on	TT4800/00A
8 A Express Delivery Van	1960 - 61	TT1200/00
Imp Van	Nov. 65 on	TT4902/00A
"K" Range Trucks 1½, 2 & 3 ton	Oct.61-Sept.66	TT4800/00A
"K" Range Trucks 1½, 2 & 3 ton	Oct. 66 on	TT4802/00A
1500 Series (Walk Thru) Van	Nov. 59 on	TT4800/00A
2500 Series (Walk Thru) Van	Aug. 65 on	TT4800/00A
1501 Tractor Unit	Apr. 67 on	TT4802/00A
C53 Range	Feb.63-Sept.66	TT4800/00A
C53 Range	Oct. 66 on	TT4802/00A
C59 A Range	Mar. 69 - 65	TT4800/00A
Maxiload 14-16 ton Range (12 Volt)	Sept.64-Sept.66	TT4800/00A
Maxiload 14-16 ton Range (12 Volt)	Oct. 66 on	TT4802/00A
Maxiload 14-16 ton Range (24 Volt)	Mar. 65 on	TT4802/00A
PB Van	May 71 on	TT4802/00A
DAIMLER (CARS)		
SP 250	1959 - 1964	TT3800/00A
DM 2 2½ Litre V8	1962 on	TT4801/00A
XDM 3 4½ Litre	1968 on	TT4201/00A
V8 250 Saloon	1968 on	TT4801/00A
4½ Litre Majestic Major		
DQ 450	1962 on	TT3800/00A
4½ Litre Hearse, Ambulance & Limousine DR 450	1962 on	TT3800/00A
Sovereign 2.8 Litre & 4.2 Litre	66 - Nov. 70	TT4801/00A
Sovereign 2.8 Litre & 4.2 Litre	Dec. 70 on	TT4802/00A
DAIMLER (COMMERCIAL)		
Fleetline Buses	Jan. 63 on	TT5300/00
Roadliner Buses	Jan.63-Oct.70	TT5300/00
Roadliner Buses	Nov. 70 on	TT6800/00
DODGE (CARS)		
Avenger 1250cc. & 1500cc.	1970 on	TT4802/00A
DODGE (COMMERCIAL)		
Fargo FK 160	July 69 on	TT4800/00A
Fargo FK 500 & FK 700	July 69 on	TT4802/00A
Fargo FKB 300	July 69 on	TT4802/00A
Coumier 1622cc. & 1800cc.	Feb. 63 on	TT3200/00A

MAKE AND MODEL	YEAR	CODE
FORD (CARS)		
New Anglia 105E & 307E Van	Sept.59-May 61	TT3802/00A
New Anglia 105E & 307E Van	June 61-June 65	TT3803/00A
New Anglia De Luxe 105E & 307E Van	Feb.61-Jan.62	TT3802/00
New Anglia De Luxe 105E & 307E Van	Feb.62-June 65	TT3803/00A
105E Estate Car	Oct.61-Dec.61	TT3802/00A
105E Estate Car	Jan.62-June 65	TT3803/00A
Cortina 113E GT.	Apr.63-June 65	TT4803/00A
Corsair	1962 - June 65	TT4800/00
Corsair G.T.	1963 - Sept. 65	TT4803/00A
Zephyr Mk.III & Zodiac Mk.III	1962 - 1966	TT3803/00A
FORD (COMMERCIAL)		
New Anglia 105E & 307E Van	Sept.59-May 61	TT3802/00A
New Anglia 105E & 307E Van	June 61-June 65	TT3803/00A
Thames Trader 1½, 2, 3, 4, 5 & 7 ton	Apr. 62 on	TT3803/00A
"D" Series (Special Order Vehicle)	July 65 on	TT6801/00
Normal Control Truck	Mar. 62 on	TT3803/00A
G.S.M.		
Delta Sports Car	1961 - 1962	TT1200/01
HILLMAN		
Husky Series II	1960 - 63	TT3200/00A
Husky Series III	1963 on	TT4800/00A
Minx IIIA, IIIB & IIIC	1959 - 1963	TT4800/00A
Minx V & VI	1963 - Dec. 66	TT4802/00A
Minx Saloon, Estate & G.T.	Jan. 67 on	TT4802/00A
Super Minx Mk.I, II, III & IV	1961 on	TT4802/00A
Hunter Mk.I, II & G.T.	1966 on	TT4802/00A
Imp Series	1963 on	TT4802/00A
Avenger 1250cc. & 1500cc.	1970 on	TT4802/00A
HILLMAN (COMMERCIAL)		
Imp Van	1963 on	TT4802/00A
HUMBER		
Hawk II	1960 - 1962	TT4800/00A
Hawk III & IV	1962 - 1967	TT4802/00A
Super Snipe I & II	1958 - 1960	TT3200/00A
Super Snipe III	1960 - 1962	TT3800/00A
Super Snipe IV & V	1962 on	TT4802/00A
Sceptre I, II & Arrow	1963 on	TT4802/00A
INNOCENTI		
I.4.	Sept. 64 on	TT3802/00A
INTERNATIONAL HARVESTER		
B 450	Nov. 62 on	TT3200/00A
B 614 & B 634	1967 on	TT3800/00A
Industrial Tractor Series B	Mar. 69 on	TT4807/00
JAGUAR		
2.4 Mk.II & 3.4 Mk.II	Oct. 59 on	TT4801/00A
240 & 340	Oct. 67 on	TT4800/00A
3.4 "S" Type	Sept. 63 on	TT4801/00A
3.8 Mk.II	Oct. 59 on	TT4801/00A

MAKE AND MODEL	YEAR	CODE
JAGUAR (Continued)		
3.8 "S" Type	Sept. 63 on	TT4801/00A
Mk.X 3.8	1961 on	TT4201/00A
Mk.X 4.2	1964 on	TT4201/00A
420 4.2	1966 on	TT4801/00A
420 G 4.2	1966 on	TT4201/00A
"E" Type Sports Car Series	Mar.61-Mar.71	TT4201/00A
XJ6 2.8 & 4.2	Oct.68-Nov.70	TT4801/00A
XJ6 2.8 & 4.2	Dec. 70 on	TT4802/00A
XJ25 "E" Type 12 Cylinder	Apr. 71 on	TT4802/00A
JENSEN		
541 Ct	1962 - 1966	TT6810/00
CV8 Mk.III	1965 - 1966	TT6810/00
Interceptor II & FF II	Oct. 69 on	TT3803/00A
Interceptor III, FF III & SP Saloon	Jan. 72 on	TT3803/00A
Healey J.H. 1	Mar. 72 on	TT6811/01
LEYLAND (COMMERCIAL)		
2 ton Van & Pick Up	Feb. 63 on	TT4801/00A
Nuffield 344 & 384 Tractor	Nov. 69 on	TT4801/00A
LOTUS		
Elan 2+2	Oct.67-Mar.68	TT3803/00A
Elan 2+2 Series II	Apr. 68 on	TT6811/01
Elan +2 "S"	Nov.68-June 69	TT3903/00A
Elan +2 "S"	July 69 on	TT6811/01
Europa (PS) & Phase II (PS)	Jan.67-Oct.71	TT4804/00
Europa Phase III Twin CAM	Nov. 71 on	TT6811/01
Seven Series 4	Oct. 70 on	TT4804/00
MARCOS		
2 Litre Ford engine	Oct. 69 on	TT6811/00
3 Litre Volvo engine	Oct. 69 on	TT3802/00A
Mantis (M70)	Sept. 70 on	TT6811/01
M.G.		
1100, 1100 Mk.II & 1300	1962 on	TT3802/00A
M.G.B. & M.G.B. G.T. (U.S.A. & Sweden only)	Oct. 67 on	TT3802/00A
M.G.B. & M.G.B. G.T. Mk.II (U.S.A, Germany & Sweden only)	June 71 on	TT3802/00A
M.G.C. & M.G.C. G.T. (U.S.A. only)	Oct. 67 on	TT3802/00A
Magnette Mk.III & Mk.IV	1959 on	TT3800/00A
MASERATI		
(Suitable for both Oil Temp. & Water Temp. Indicator)		
Model 101/10 (6 Cylinder)	Sept. 65 on	TT3804/00A
107 & 112 (8 Cylinder)	Oct. 63 on	TT3804/00A
108 (6 Cylinder)	Oct. 63 on	TT3804/00A
109 (6 Cylinder)	Sept. 65 on	TT3804/00A
115 (8 Cylinder)	Sept. 67 on	TT3804/00A
MONTEVERDI		
High Speed (Switzerland)	Mar.68-Feb.70	TT3804/00A
High Speed (Switzerland)	Mar. 70 on	TT4802/00A
MORGAN		
Plus Four 2 Seater	Jan. 58 on	TT1200/01
Plus Four 4 Seater	Mar. 56 on	TT1200/01
Plus Four Super Sports	Apr. 62 on	TT1200/01

MAKE AND MODEL	YEAR	CODE
MORGAN (Continued)		
Plus Four Plus	Apr. 62 on	TT1200/01
Plus 8	Sept. 68 on	TT4801/00A
4/4 1600 Ford Engine	Sept. 69 on	TT6811/01
MORRIS (CARS)		
Mini Super Deluxe	1961 - July 64	TT3800/00A
Mini Super Deluxe	Aug.64-Sept.67	TT3802/00A
Mini Mk.II 850cc. & 1000cc. Super Deluxe	Oct. 67 on	TT3802/00A
Cooper & Cooper "S"	1961 - Sept. 64	TT3800/00A
Cooper, Cooper Mk.II, Cooper "S" & Cooper "S" Mk.II	Oct. 64 on	TT3802/00A
1100, 1100 Mk.II 1300, 1300 G.T.	1962 on	TT3802/00A
1300 Mk.III Traveller	Oct. 71 on	TT3803/00A
Marina 1300 & 1800	Apr. 71 on	TT3803/00A
1800, 1800 Mk.II, 1800 "S" & 1800 "S" Mk.II	Mar. 66 on	TT3802/00A
2200 (6 Cylinder)	Mar. 72 on	TT3803/00A
Oxford V & VI	1959 on	TT3800/00A
10 Cwt Van	1962 - 1963	TT1800/00
½ ton Van & Pick Up	July 63 on	TT3800/00A
MORRIS (COMMERCIAL)		
J 2 15 Cwt	June 56-Oct.59	TT1200/01
J 2 16/18 Cwt	Nov. 61 on	TT3800/00A
J 4 10/12 Cwt	Sept. 60 on	TT3800/00A
J 4 180 & 200	Mar. 68 on	TT3802/00A
"EA" Cab (CV 102)	Sept. 68 on	TT3804/00A
JU 250	July 67 on	TT3802/00A
LD 4M & LD 5M	May 60-Feb.61	TT1200/00
LD 4M & LD 5M	Mar. 61 on	TT3200/00A
5 & 7 ton FH Cab Series I	1963 on	TT3800/00A
Series III Normal Control 3, 5, 6, 7 ton & Prime Mover	Oct. 60 on	TT3800/00A
Series IV F.G Cab 1½, 2, 3, 4 & 5 ton	1959 - July 69	TT3800/00A
F.G. Cab 1½, 2, 3, 4 & 5 ton (12v. earth return)	Aug. 69 on	TT3800/00A
F.G. Cab 1½, 2, 3, 4 & 5 ton (12v. insulated return)	Aug. 69 on	TT6802/00
F.G. Cab 3 & 4 ton (24v.)	Aug. 69 on	TT3802/00A
Series IV 2, 3, 4 & 5 ton Low Loader	Sept. 63 on	TT3800/00A
Series IV 5 & 7 ton F.F. Cab	1958 - 1959	TT3200/00A
Series IV 5 & 7 ton F.F. Cab	1960 on	TT3800/00A
F.J. Underfloor engine (earth return)	Oct. 1964 on	TT3804/00A
F.J. Underfloor engine (insulated return)	Oct. 64 on	TT6800/00
F.M. Cab 2, 3 & 4 ton	Sept.66-June 68	TT3804/00A
F.M. Cab 2, 3 & 4 ton	July 68 on	TT3802/00A
NUFFIELD		
3/45 Mk.II & 4/65 Mk.II Tractor	July 67 on	TT3804/00A
344 & 384 Tractor	Nov. 69 on	TT3802/00A
PLYMOUTH		
Cricket 1250cc. & 1500cc.	Jan. 71 on	TT4802/00A
RELIANT		
Regal 3 Wheeler	1960 - 1962	TT4800/00A
FW 5 & FW 5A (Turkey)	Oct. 66 on	TT6811/00
Sabre 6	1963 - 1964	TT3804/00A

MAKE AND MODEL	YEAR	CODE
RELIANT (Continued)		
Carmel (FW 3)	1962 - 1964	TT3802/00A
Rebel 700 (FW 4)	Apr. 66 on	TT4802/00A
Regent Van	1960 - 1964	TT3800/00A
Sussita Estate Car	1962 - 1964	TT3800/00A
Regent IV Estate Car	1964 - 1966	TT3802/00A
Scimitar G.T.	1964 - 1966	TT3804/00A
RILEY		
Elf	1961 - Sept. 64	TT3800/00A
Elf Mk.II & Mk.III	Oct. 64 on	TT3802/00A
Kestrel 1100 Mk.I, 1100 Mk.II & 1300	Sept. 65 on	TT3802/00A
One Point Five	1957 - 1965	TT3200/00A
Two Point Six	1957 - 1959	TT3200/00A
ROLLS ROYCE		
Silver Cloud Series S.2 & S.3	Sept. 59 on	TT3201/00A
Silver Shadow	Oct.65-Sept.70	TT3800/00A
Corniche	May 71 on	TT3800/00A
Phantom V & VI	Aug. 59 on	TT3201/00A
ROVER		
"95" & "2110" (P4)	1962 - 1965	TT3802/00A
2.6 Litre & 3 Litre (P 5)	Oct. 62 on	TT3802/00A
3½ Litre V8 (P 5B)	Sept. 67	TT4806/00
2000 (P6)	Oct.63-Nov.65	TT4801/00A
2000 & 2000 T.C. (P6)	Oct.63-Nov.65	TT4801/00A
2000 & 2000 T.C. (P6)	Nov. 67 on	TT4805/00
3500 & 2500 "S" Mk.II (P6B)	Apr. 68 on	TT4806/00
Landrover Series II B & Series III	Mar. 67 on	TT3804/00A
Range Rover Phase I	Mar. 67 on	TT4806/00
SCAMMELL		
Scarab 4	July 63 on	TT4800/00A
SINGER		
Chamois Series	1964 on	TT4802/00A
Gazelle IIIA & IIIB	1959 - 1961	TT1200/01
Gazelle IIIC Saloon	1961 - 1963	TT1800/00
Gazelle IIIC Estate & Coupe	1961 - 1963	TT1200/01
Gazelle V & VI	1963 - 1966	TT4802/00A
Gazelle	Jan. 67 on	TT4802/00A
Vogue Series	1961 on	TT4802/00A
STANDARD		
Ensign 4 cyl.	1960 - 1961	TT3800/00A
Ensign 6 cyl.	1960 - 1961	TT4800/00A
New Ensign	1962 - 1963	TT3800/00A
Vignale, Vanguard 4 cyl.	1960 - 1963	TT3800/00A
Vignale, Vanguard 6 cyl.	1960 - 1963	TT4800/00A
SUNBEAM		
Imp Sports	1966 on	TT4802/00A
Stiletto Coupe	1967 on	TT4802/00A
Rapier III & IIIA	1959 - 1963	TT4800/00A
Rapier IV, V	1963 - 1967	TT4802/00A
Rapier Arrow	1967 on	TT4802/00A
Rapier H.120 (Holbay Conversion)(Water Temp)	1968 on	TT4802/00A
Rapier H.120/Holbay Conversion)(Oil Temp)	1968 on	TT4803/00A
Alpine Mk.I & II	1959 - 1963	TT4800/00A
Alpine III, IV, V & G.T.	1963 on	TT4802/00A
Superleggera	1963 on	TT4802/00A
Tiger 260	1964 - 1967	TT4802/00A
Tiger II	1967 on	TT6812/00

MAKE AND MODEL	YEAR	CODE
TRIUMPH		
Pony (Israel & Iran)	1967 on	TT4802/00A
TR 4	1961 - May 62	TT3802/00A
TR 4 & TR 4A	June 62-Mar.65	TT3804/00A
TR 4	Apr.65-Sept.67	TT3802/00A
TR 5	Oct.67-Dec.67	TT4802/00A
TR 5 & TR 6	Jan. 68 on	TT4803/00A
Spitfire	Oct.62-Jan.64	TT4801/00A
Spitfire, Mk.II, Mk.III	Feb.64-Dec.67	TT4802/00A
Spitfire, Mk.III & Mk.IV	Jan. 68 on	TT4803/00A
G.T.6	Oct.66-Dec.67	TT4802/00A
G.T.6, Mk.II & Mk.III	Jan. 68 on	TT4803/00A
Herald Series	1959 - May 66	TT4800/00A
Herald Series	June 66-Dec.67	TT4802/00A
Herald Series	Jan. 68 on	TT4803/00A
1300 & 1300 T.C.	Oct.65-Dec.67	TT4802/00A
1300 & 1300 T.C.	Jan.68-Feb.68	TT4803/00A
1300 & 1300 T.C.	Mar. 68 on	TT4802/00A
Toledo 1300 & 1500	Aug. 70 on	TT4803/00A
1500	Sept. 70 on	TT4803/00A
1500 (Israel & South Africa only)	July 69 on	TT4802/00A
Dolomite 1850cc.	Jan. 72 on	TT4802/00A
Vitesse & Mk.II	1962 - Sept.66	TT4800/00A
Vitesse 2 Litre	Oct.66-Dec.67	TT4802/00A
Vitesse 2 Litre & Vitesse Mk.II 2 Litre	Jan. 68 on	TT4803/00A
2000	Oct.63-Dec.67	TT4802/00A
2000 & Mk.II	Jan.68 on	TT4803/00A
2.5 P.I. & Mk.II	Jan. 68 on	TT4803/00A
Stag 3 Litre V8	Jan. 70 on	TT4803/00A
T.V.R.		
2500	Dec. 71 on	TT4803/00A
UNIPOWER		
G.T.	Apr. 69 on	TT3802/00
VOLVO		
P1800 Sports Car (water temp)	Aug. 69 on	TT3802/00A
P1800 Sports Car (oil temp.)	Apr. 69 on	TT3805/00
P1800E Sports Car (water temp.)	Oct. 69 on	TT3802/00A
P1800E Sports Car (oil temp.)	Oct. 69 on	TT3805/00
P1800ES Sports Car (water temp.)	Oct. 71 on	TT3802/00A
P1800ES Sports Car (oil temp.)	Oct. 71 on	TT3805/00
VANDEN PLAS		
Princess 3 Litre & Mk.II	1959 on	TT3800/00A
Princess 4 Litre "R"	1964 on	TT3802/00A
110 & 1300 Series	1963 on	TT3802/00A
WOLSELEY		
Hornet	1961 - Sept.64	TT3800/00A
Hornet Mk.II & Mk.III	Oct. 64 on	TT3802/00A
1100 & 1300 Series	Sept. 65 on	TT3802/00A
1500	1957 - 1965	TT3200/00A
15/50	1956 - 1958	TT1200/01
15/60	1958 - 1961	TT3800/00A
16/60	1961 on	TT3800/00A
18/85 & Mk.II & Mk.II "S"	1967 on	TT3802/00A
6/99	1959 - 1961	TT3800/00A
6/110	1961 - May 64	TT3800/00A
6/110 Mk.II	June 64 on	TT3802/00A
Six (six cylinder)	Mar. 72 on	TT3803/00A

Details of Smiths Electric Temperature Gauge Transmitters

CODE	TYPE *	ELECTRICAL CONNECTION	THREAD FORM AND SEATING TYPE	TRANSMITTER RESISTANCE AT 100°C (OHMS)	VOLTAGE
TT.1200/00	TH	Snap-on	5/8" 18 TPI UNF Taper Seat	-	12
TT.1200/01	TH	Screw	5/8" 18 TPI UNF Taper Seat	-	12
TT.1200/02	TH	Screw	5/8" 18 TPI UNF Taper Seat	-	12
TT.1300/00	TH	Snap-on	5/8" 18 TPI UNF Taper Seat	-	24
TT.1300/01	TH	Screw	5/8" 18 TPI UNF Taper Seat	-	24
TT.1800/00	TH	Blade	5/8" 18 TPI UNF Taper Seat	-	12
TT.3200/00A	SC	Screw	5/8" 18 TPI UNF Taper Seat	11.4 - 15.3 OHMS	12
TT.3201/00A	SC	Screw	5/8" 18 TPI UNF Taper Seat	11.4 - 15.3 OHMS	12
TT.3400/00A	SC	Snap-on	5/8" 18 TPI UNF Taper Seat	11.4 - 15.3 OHMS	12
TT.3800/00A	SC	Blade	5/8" 18 TPI UNF Taper Seat	11.4 - 15.3 OHMS	12
TT.3801/00A	BR	Blade	5/8" 18 TPI UNF Taper Seat	22.4 - 32.5 OHMS	10
TT.3802/00A	BR	Blade	5/8" 18 TPI UNF Taper Seat	37.4 - 47.6 OHMS	10
TT.3803/00A	BR	Blade	5/8" 18 TPI UNF Taper Seat	43.2 - 57.6 OHMS	10
TT.3804/00A	BR	Blade	5/8" 18 TPI UNF Taper Seat	27.9 - 35.7 OHMS	10
TT.3805/00	BR	Blade	5/8" 18 TPI UNF Taper Seat	112.9 - 161.4 OHMS	10
TT.4200/00A	SC	Screw	5/8" 18 TPI UNF Flat Seat	11.4 - 15.3 OHMS	12
TT.4201/00A	BR	Screw	5/8" 18 TPI UNF Flat Seat Plated	27.9 - 35.7 OHMS	10
TT.4800/00A	SC	Blade	5/8" 18 TPI UNF Flat Seat	11.4 - 15.3 OHMS	12
TT.4801/00A	BR	Blade	5/8" 18 TPI UNF Flat Seat	27.9 - 35.7 OHMS	10
TT.4802/00A	BR	Blade	5/8" 18 TPI UNF Flat Seat	37.4 - 47.6 OHMS	10
TT.4802/01A	BR	Blade	5/8" 18 TPI UNF Flat Seat Plated	37.4 - 47.6 OHMS	10
TT.4803/00A	BR	Blade	5/8" 18 TPI UNF Flat Seat	43.2 - 57.6 OHMS	10
TT.4804/00A	BR	Blade	18 x 1.5mm Flat Seat	37.4 - 47.6 OHMS	10
TT.4805/00	BR	Blade	5/8" 18 TPI UNF Flat Seat Brass	37.4 - 47.6 OHMS	10
TT.4806/00	BR	Blade	5/8" 18 TPI UNF Flat Seat Brass	43.2 - 57.6 OHMS	10
TT.4807/00	SC	Blade	14 x 1.5mm Flat Seat	11.4 - 15.3 OHMS	12
TT.5200/00	TH	Double Screw (Insul. Return)	3/4" UNF Taper Seat	-	12
TT.5300/00	TH	Double Screw (Insul. Return)	3/4" UNF Taper Seat	-	24
TT.6800/00	BR	Double Blade (Insul. Return)	5/8" 18 TPI UNF Taper Seat	27.9 - 35.7 OHMS	10
TT.6801/00	BR	Double Blade (Insul. Return)	5/8" 18 TPI UNF Taper Seat	43.2 - 57.6 OHMS	10
TT.6802/00	BR	Double Blade (Insul. Return)	5/8" 18 TPI UNF Taper Seat	37.4 - 47.6 OHMS	10
TT.6801/00	BR	Blade	1/2" 18 TPI NPTF Dry Seal	37.4 - 47.6 OHMS	10
TT.6811/00	BR	Blade	1/2" 27 TPI NPTF Dry Seal	37.4 - 47.6 OHMS	10
TT.6811/01	BR	Blade	1/2" 27 TPI NPTF Dry Seal	43.2 - 57.6 OHMS	10
TT.6812/00	BR	Blade	3/8" 18 TPI NPTF Dry Seal	37.4 - 47.6 OHMS	10

* Semi Conductor SC Bi-Metal Res. BR Thermal TH



SMITHS INDUSTRIES LIMITED

MOTOR ACCESSORY SALES & SERVICE DIVISION

EXPORT DEPARTMENT
CRICKLEWOOD LONDON NW2 6NN
Telephone 01-452 3333 Telex 22671
Cables Speedofac London NW2