

# Cross Country

EST. 1981

INDUSTRIAL TOOLS & SUPPLIES



PRODUCT CATALOG 2023-2024

[www.crosscountrytools.com](http://www.crosscountrytools.com)

# TABLE OF CONTENTS

## ABOUT US

Services and Supplies .....4

## OUR STAFF

Contacts.....

## SALES

Square Drive Torque Wrenches .....9

Hex head Toque Wrenches .....10

Expander System Pivot Pins .....11

## RENTALS

Michigan Pneumatic .....22

RAD Torque Systems .....25

Drillco Annular Cutters .....26

Boltight/Superbolt Tensioning Solutions .....27

## SERVICES

Torque & Pressure Calibration Laboratory .....31

Aquastratos Inspection & Planning .....33

# ABOUT CROSS COUNTRY

Cross Country Contractors, Inc is a veteran owned industrial tool and MRO supply company that has been serving the petrochemical, oil & gas, railroad, pulp & paper, and nuclear power generation industries of Louisiana since 1981. We carry all major brands of hand tools, battery powered tools, hydraulic, and pneumatic equipment.



## CONTACT US

Address: 1045 N. Carrollton Ave.

Baton Rouge, LA 70806

Office: 1-(800)-742-2040

Website: [www.crosscountrytools.com](http://www.crosscountrytools.com)



# OUR SERVICES & SUPPLIES

## ABRASIVES

- Abrasive adapters
- Bench Wheels
- Cones & Plugs
- Cut-off Wheels
- Fiber Discs
- Flap Wheels
- Grinding Wheels
- Non-woven Materials
- Polifans
- Sanding Belts
- Shop Rolls

## ELECTRIC TOOLS

- Belt Sanders
- Circular Saws
- Concrete Planers
- Drills
- Grinders
- Impacts
- Pumps
- Saws
- Screw Guns

## PAINT AND CHEMICALS

- Aerosol Chemicals
- Aerosol Paints
- Bulk Paints
- Thread Locks

## AIR HOSE ACCESSORIES

- Air Compressors
- Air Couplers & Connectors
- Air Filtration Systems
- Air Hose & Assemblies
- Breathable Air

## HYDRAULIC TOOLS

- Center hole Cylinders
- Hand Pumps
- Hydraulic Bolting Equipment
- Low Profile Cylinders
- Portable Power Pumps
- Rams
- Single Acting Cylinders

## PNEUMATIC TOOLS

- Breakers
- Clay Diggers
- Chipping Hammers
- Drills
- Grinders
- Impacts
- Nibblers
- Pneumatic Bolting Equipment
- Rammers
- Rivet Busters
- Saws

## DRILLING AND CUTTING

- Annular Cutters
- Band Saw Blades
- Carbide Blades
- Carbide Burs
- Chisels
- Diamond Blades
- Drill Bits
- Files
- Hole Saws
- Masonry Bits

## MATERIAL HANDLING

- Beam Clamps
- Beam Trolleys
- Cable Hoists
- Chain Fall Hoists
- Electric Hoists
- Pneumatic Hoists

## SAFETY

- Clothing
- Face Protection
- Fall Protection
- First Aid Kits
- Gloves
- Head Protection
- Lock Outs
- Respirators
- Safety Glasses



**Industrial Tools and Supplies**

Sales · Repairs · Rentals · Calibrations

# OUR STAFF

NAME	CALL FOR	EMAIL	OFFICE #
<b>SALE</b>			
<b>Joe Amorello</b> Co-Owner	Ownership decisions and management and operational issues for company.	joe@crosscountrytools.com	Office (225) 654-2040  Cell (225) 413-3995
<b>Nick Amorello</b> Co-Owner	Assistance with order status, vendor set up, delivery status, pricing, ownership decisions, process PO's, management and operations issues.	nick@crosscountrytools.com	Office (225) 654-2071  Cell (225) 278-5300
<b>Ron Glasgow</b> Sales Manager	Customer activity, sales questions, product support and field training, market	ron@crosscountrytools.com	(985) 264-7949
<b>CUSTOMER SERVICE</b>			
<b>Austin Guillory</b> Inside Sales/ Calibrations	Assistance with order status, quoting, inside calibrations.	austin@crosscountrytools.com	(800) 742-2040
<b>Justin Tassin</b> Project Sales Manager	Marketing and promotional information	justin@crosscountrytools.com	(225) 301-0754
<b>ACCOUNTING</b>			
<b>Cecila Percel</b>	Assistance with payment processing, invoicing, statement reconciliation.	cecila@crosscountrytools.com	(800) 742-2040

# SALES

# OUR SERVICES & SUPPLIES

## ABRASIVES

- Abrasive adapters
- Bench Wheels
- Cones & Plugs
- Cut-off Wheels
- Fiber Discs
- Flap Wheels
- Grinding Wheels
- Non-woven Materials
- Polifans
- Sanding Belts
- Shop Rolls

## ELECTRIC TOOLS

- Belt Sanders
- Circular Saws
- Concrete Planers
- Drills
- Grinders
- Impacts
- Pumps
- Saws
- Screw Guns

## PAINT AND CHEMICALS

- Aerosol Chemicals
- Aerosol Paints
- Bulk Paints
- Thread Locks

## AIR HOSE ACCESSORIES

- Air Compressors
- Air Couplers & Connectors
- Air Filtration Systems
- Air Hose & Assemblies
- Breathable Air

## HYDRAULIC TOOLS

- Center hole Cylinders
- Hand Pumps
- Hydraulic Bolting Equipment
- Low Profile Cylinders
- Portable Power Pumps
- Rams
- Single Acting Cylinders

## PNEUMATIC TOOLS

- Breakers
- Clay Diggers
- Chipping Hammers
- Drills
- Grinders
- Impacts
- Nibblers
- Pneumatic Bolting Equipment
- Rammers
- Rivet Busters
- Saws

## DRILLING AND CUTTING

- Annular Cutters
- Band Saw Blades
- Carbide Blades
- Carbide Burs
- Chisels
- Diamond Blades
- Drill Bits
- Files
- Hole Saws
- Masonry Bits

## MATERIAL HANDLING

- Beam Clamps
- Beam Trolleys
- Cable Hoists
- Chain Fall Hoists
- Electric Hoists
- Pneumatic Hoists

## SAFETY

- Clothing
- Face Protection
- Fall Protection
- First Aid Kits
- Gloves
- Head Protection
- Lock Outs
- Respirators
- Safety Glasses



EST. 1981

**Industrial Tools and Supplies**

Sales · Repairs · Rentals · Calibrations

# OUR PARTNERS

**ENERPAC** 

**CRESCENT** 

**BOLTIGHT** 

**HARRINGTON**  
HOISTS AND CRANES

 **Expander**®

**NORD-LOCK**  
GROUP

**PROTO**®

**Snap-on**

 **RAD**  
TORQUE SYSTEMS

**metabo**  
PROFESSIONAL POWER TOOL SOLUTIONS

 **UNITEC**

**WILLIAMS**

 **MICHIGAN**  
**PNEUMATIC TOOL**

 **SUPERBOLT**™

 **ALEMITE**®

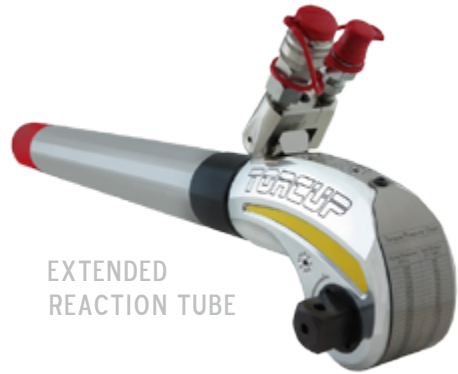
 **VALLEY FORGE**  
1974

*torcUP*

 **DRILLCO**  
CUTTING TOOLS

# SQ SQUARE DRIVE TORQUE WRENCH

The SQ series is a masterpiece of style, capability and durability. Now offering our perfected Uni-Swivel design, the SQ can adapt to any job site application. Within this tool, you will find our proven "Three Moving Part" technology which provides application accuracy of +/-3%. Engineered to master any application, the SQ matches its amazing looks with the safest and most reliable results.



EXTENDED REACTION TUBE



DIRECT HEX ADAPTOR



END CAP PROTECTOR



TOOL HANDLE

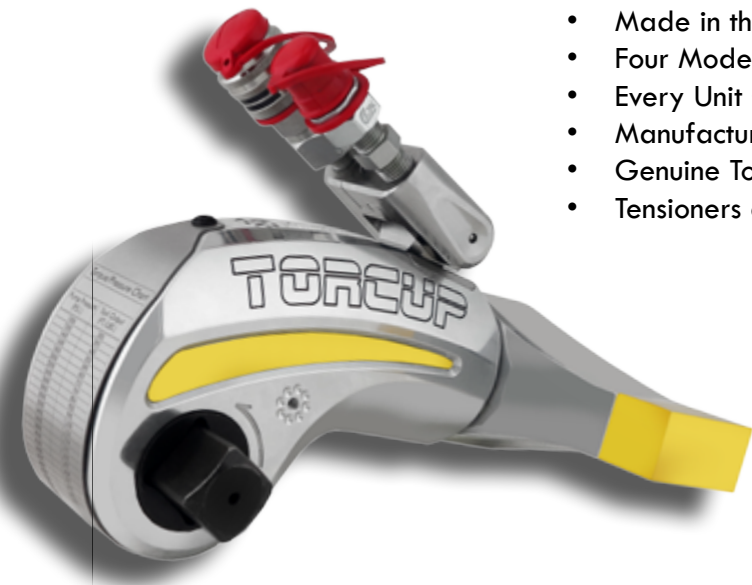


NON PUSH THRU SQUARE DRIVE



WIDE BOOT REACTION ARM

- Made in the USA
- Four Models From 127 Ft/Lbs to 11,000 Ft/Lbs
- Every Unit Calibrated In ISO17025 Laboratory
- Manufactured With AQ Certified Alloys
- Genuine TorcUP Design
- Tensioners are self-retracting



CARRYING CASE

# HEX HEAD TORQUE WRENCHES

## TU SERIES SQUARE DRIVE HYDRAULIC TORQUE WRENCH



- Eight models from 127 lbf-ft to 58,000 lbf-ft
- Torque accuracy of +/-3%
- Patented mono-body housing for reduced torsion and flex on the tool.
- Three moving part design reduces internal friction
- Multi-tooth drive segment ensures a 27 degree stroke with each full advance
- Every unit calibrated in ISO 17025 Lab

## TX SERIES LOW PROFILE HYDRAULIC TORQUE WRENCH



- Seven Models from 45 lbf-ft to 47,380 lbf-ft
- Torque accuracy of +/-3%
- Tight use radius designed for application with minimal clearance
- Patented "peanut-shaped" piston
- One pin for link to cylinder engagement - no tool required to swap links
- Every unit calibrated in ISO 17025 Lab

## SQ SERIES SQUARE DRIVE HYDRAULIC TORQUE WRENCH



- Seven Models from 127 lbf-ft to 11,000 lbf-ft
- Torque accuracy of +/-3%
- 360 degree by 180 degree uni-swivel to accommodate applications with obstructions.
- Patented mono-body housing for reduced torsion and flex on the tool
- Three moving part design reduces internal friction
- Every unit calibrated in ISO 17025 Lab

## TXU SERIES UNI-SWIVEL LOW PROFILE HYDRAULIC TORQUE WRENCH



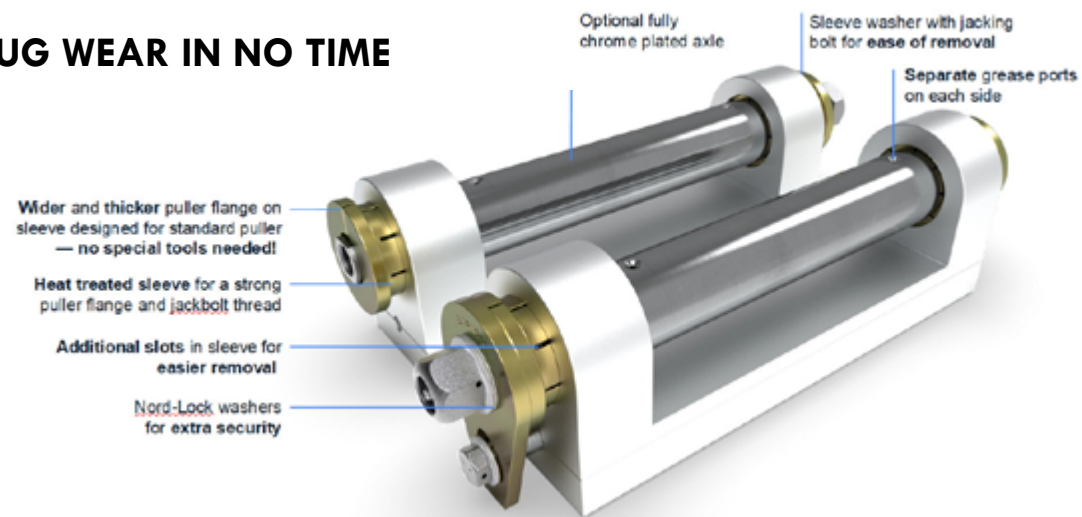
- Five models from 192 lbf-ft to 35,650 lbf-ft
- Torque accuracy of +/-3%
- Tight nose radius designed for applications with minimal clearance
- Patented "peanut-shaped" piston
- 360 degree by 180 degree uni-swivel to accommodate applications with obstructions.
- One pin for link to cylinder engagement - no tool required to swap links
- Every unit calibrated in ISO 17025 Lab

# EXPANDER SYSTEMS PIVOT PINS

Expander System's Pivot provides a permanent solution to your lug wear problems. With the Expander System, repairs can be carried out directly without welding or line boring



## ELIMINATE LUG WEAR IN NO TIME

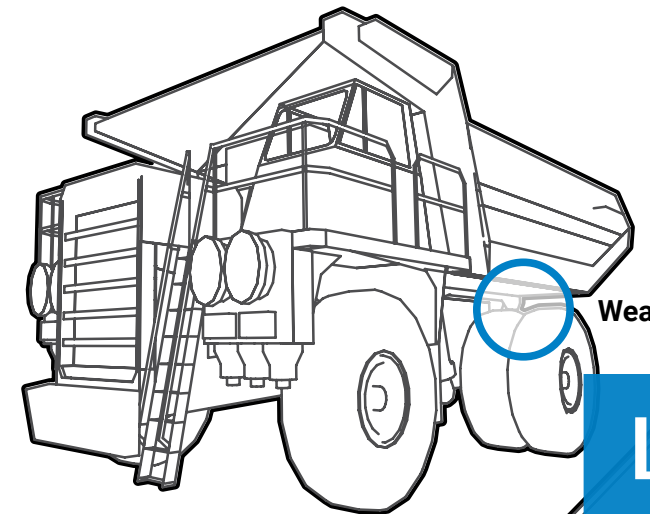


## ARE YOU GETTING THE MOST OUT OF YOUR MACHINE?



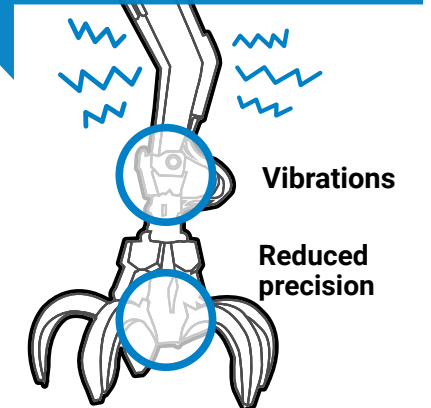
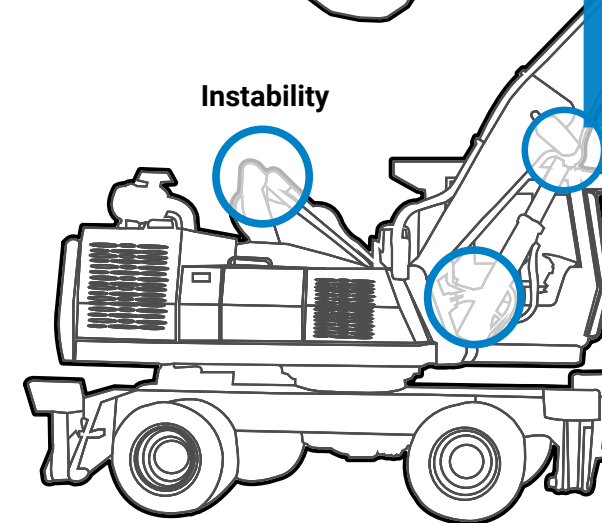
**SLOW!**

Requires transport to and from the workshop.



Loosening

## LOOSE MACHINE PARTS DUE TO LUG WEAR?



## TRADITIONAL REPAIR METHODS ARE EXPENSIVE AND TIME-CONSUMING!

All machinery is subject to lug wear over time, which results in costly repairs and downtime. A traditional pin starts with reduced tolerance for original bore fitment. This leads to accelerated pivot lug wear.

Traditional repair methods consist of a multi-step process of welding and line boring, which cannot easily be carried out in the field and therefore results in additional costs and downtime.

- Transport to workshop,
- Welding,
- Line boring,
- Lost production efficiency,
- Temporary fix — lug wear will reoccur!



# THE EXPANDER SYSTEM OFFERS A PERMANENT SOLUTION TO LUG WEAR



The Expander System is a simple and economical way to permanently solve costly repairs due to worn pivot lugs.

**QUICK!**  
Avoid welding and boring.

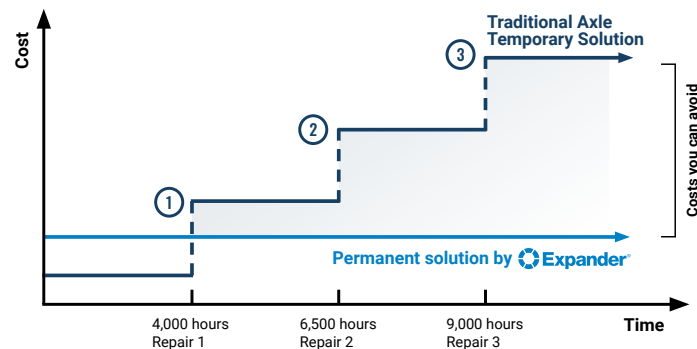
## QUICK AND EASY

The Expander System repair is easy and permanent. The axle is locked in both lugs by the expandable sleeves providing increased stability. The system is installed straight into the worn lugs.

## FIELD TESTED

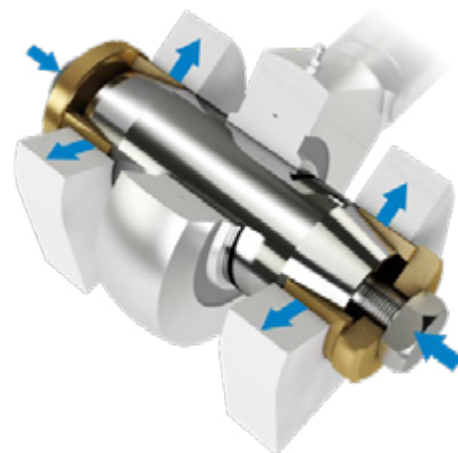
Expander System pivot solutions have been solving wear issues for over 35 years. Studies have shown that Expander System can withstand up to 50,000 hours of use without developing movement. That is why we offer a 10 year/10,000 hours lug wear warranty!

## COST SAVINGS FROM THE FIRST REPAIR



The Expander System can be used in any machinery and is an ideal and permanent repair solution for construction, mining and forestry equipment. The Expander System saves money from the very first application and eliminates recurring costs associated with pivot repairs.

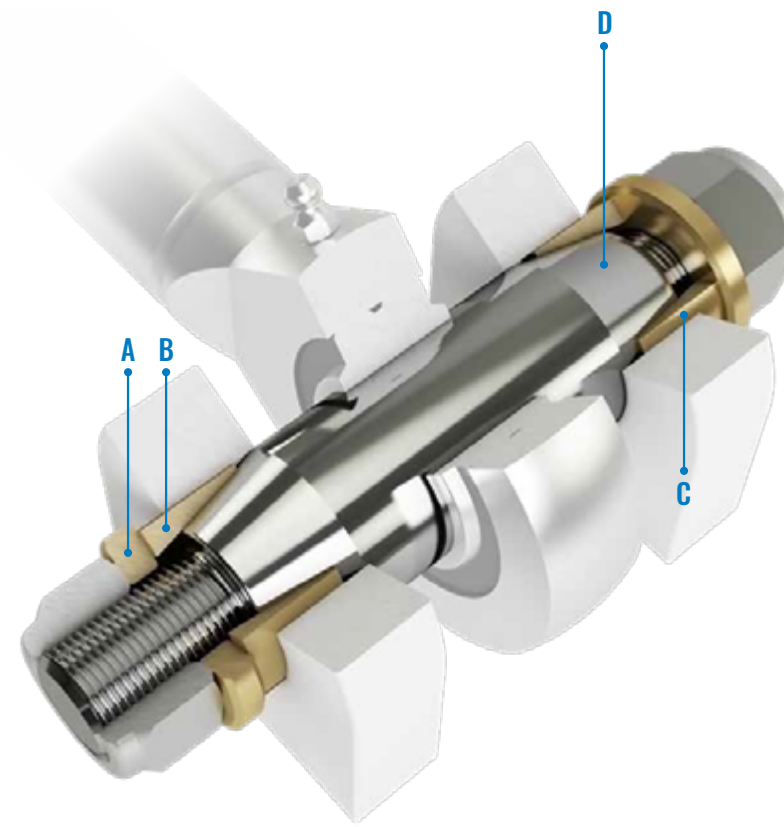
- ✓ Quick and easy to install/removal
- ✓ No welding or line boring
- ✓ Field install/disassembly
- ✓ No special tools needed
- ✓ Economical and permanent solution
- ✓ 10 year or 10,000 hours warranty
- ✓ Online order — quick delivery



The sleeves expand radially and fixates axle and lugs — permanently eliminating lug wear.

## MANIFOLD ARRANGEMENT

The Expander System consists of an assembly that includes: an axle tapered at both ends, two expansion sleeves, two tension washers and two fasteners.



- A** Upon tightening the fasteners, the washer presses the slotted expansion sleeve up the tapered ends of the pin.
- B** The sleeves expand, conform to the lugs and lock the system in place.
- C** Once re-torqued, the system locks from both sides and significantly increases stability.
- D** The tapered axle makes it easy to remove and reinstall compared to traditional straight pins.

The Expander System is perfect for repairs even if the lugs are badly worn. The expansion sleeves expand to conform to the wear patterns and lock the system into place. There is no need for time consuming and expensive welding practices. Expander is a long term solution and most repairs are done in the field to minimize your downtime.



# EXPANDER SYSTEM PIVOT PIN

From structural strength calculations to the dimensioning and production of your complete pivot pin axle – our personalized service will accompany you throughout the pivot pin creation process. With your pivot pin project in safe hands, you can dedicate more time to other areas of the machine building process.

## NO MORE LUG WEAR — EVER

The Expander System is perfect for repairs. Even if the lugs are badly worn, a repair can be made in the field with minimum downtime. If the lugs are worn, the sleeves simply expand to conform with the wear pattern and lock the system in place without the need for time consuming and expensive welding and line boring – just retorque.

The Expander System Online software has been specifically developed for managing orders, designing and manufacturing Expander System pivot pins. You can find examples of the many pivot pin positions we have produced on our webshop.

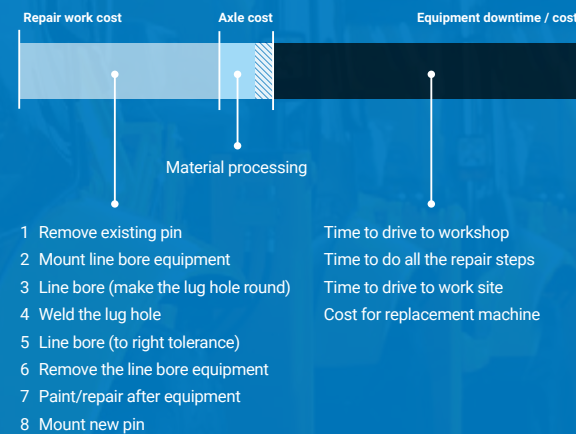
Please visit our webshop:  
[nord-lock.com/shop-expander](http://nord-lock.com/shop-expander)

### Aftermarket advantages

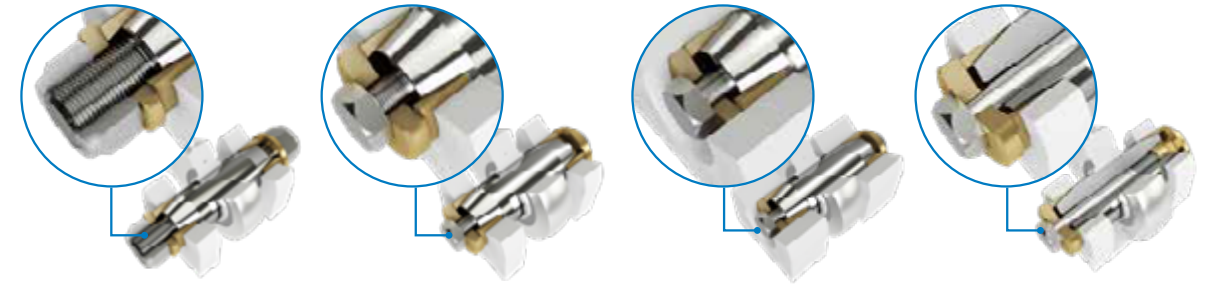
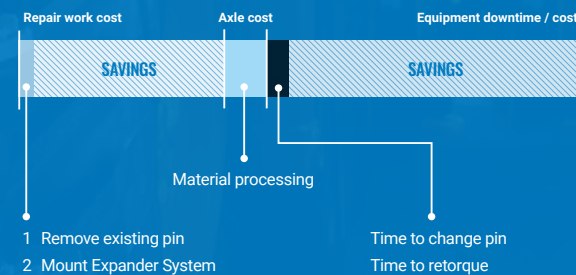
- Spare parts can be supplied regardless of the age of the equipment
- Greasing through the axle allows you to change to an automatic lubrication system
- Short lead times
- Access all pivot pin designs, place orders and follow production stages with Expander System Online
- Order tracking

## COST SAVINGS FOR WORKSHOPS AND CUSTOMERS

### SOLUTION USING LINE BORING AND TRADITIONAL STRAIGHT PIN



### SOLUTION USING EXPANDER SYSTEM



**NUT AND WASHER**

For applications with no obstacles around the pivot joint

**BOLT FASTENER WITH WASHER**

For applications with no obstacles and pivot joint diameters  $\geq 38$  mm

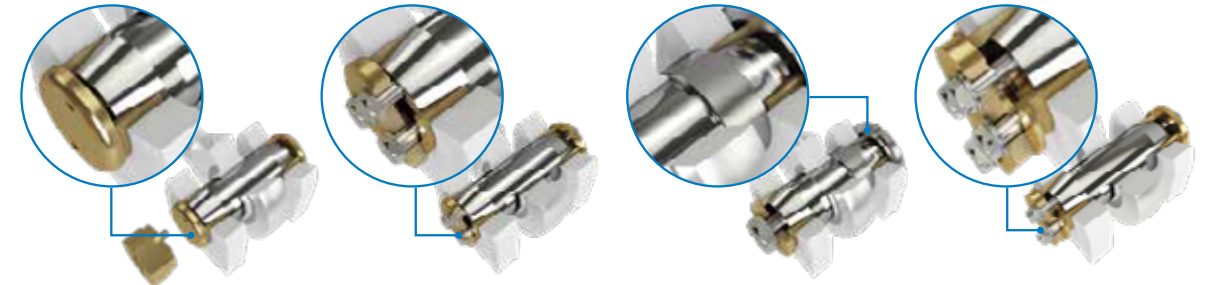
**BOLT FASTENER WITH RECESSED WASHER**

For applications with moving obstacles and a large lug width

**THROUGH BOLT DESIGN**

For applications with space constraints on one side

Axle variant	External thread	Internal thread	Internal thread	Through bolt
Fastener Side 1/Side 2	Hex nut/Hex nut	Hex head bolt /Hex head bolt	Hex head bolt /Hex head bolt	Hex head through bolt /Flush mount fastener
Obstacles outside lugs Side 1/Side 2	No obstacle/No obstacle	No obstacle/No obstacle	Moving obstacle /No obstacle	No obstacle /Fixed obstacle
Greasing of pivot	External or Internal greasing	External or Internal greasing	External or Internal greasing	External or Internal greasing
Standard pin $\varnothing$ -range	$\varnothing 15$ mm–100 mm	$\varnothing 38$ mm–160 mm	$\varnothing 38$ mm–160 mm	$\varnothing 25$ mm–160 mm
Pin length	< 2000 mm	< 2000 mm	< 2000 mm	< 500 mm
Special	Upon request	Upon request	Upon request	Upon request



**FLAT HEAD FASTENER**

For applications with moving obstacles and a narrow lug width

**MULTI-BOLT ARRANGEMENT**

For heavy-duty applications and large diameters

**STEPPED PIN WITH AXIAL LOCKING**

With axial locking for hitch pin applications

**OFFSHORE**

For offshore applications; DNV 2.22/ OS E-101 and API 8C/ISO 13535 norms

Axle variant	Internal thread	Multi-bolt internal thread	Internal thread	Internal thread
Fastener Side 1/Side 2	Flush mount fastener + mounting tool/Flush mount fastener + mounting tool	Multi-hex head bolt /Multi-hex head bolt	Hex head bolt /Hex head bolt + spanner nut	Hex head bolt /Hex head bolt
Obstacles outside lugs Side 1/Side 2	Moving obstacle /Moving obstacle	No obstacle/No obstacle	No obstacle/No obstacle	No obstacle/No obstacle
Greasing of pivot	External or Internal greasing	External or Internal greasing	External or Internal greasing	External or Internal greasing
Standard pin $\varnothing$ -range	$\varnothing 40$ mm–(160) mm	$\varnothing 70$ mm–400 mm	$\varnothing 38$ mm–160 mm	$\varnothing 20$ mm–(400) mm
Pin length	< 2000 mm	< 2000 mm	< 1000 mm	< 2000 mm
Special	Upon request	Upon request	Upon request	Upon request

# OFFSHORE PRODUCT SOLUTIONS

Cross Country provides industrial solutions for a wide range of offshore applications. We design and manufacture custom equipment to suit your exact specifications.



Pipe Make-up tools



Top Drive Structure

## Expander Pivot Systems provide offshore lug wear



- Bridge rackers
- Vertical rackers
- Top Drives
- Pins
- Hatches
- Clevis
- Retractable dolly systems
- Cranes
- Pipe racks
- Thrusters
- Trawl equipment
- Many other rig floor tools

## AQUASTRATOS UNDERWATER INSPECTIONS

Aquastratos is a client-focused environmental consulting firm serving public and private organizations across the southeastern United States. Our approach combines environmental planning and regulatory expertise with innovative drone reconnaissance technology to meet our client's needs. We specialize in aerial and underwater inspections, reporting, monitoring, and mapping of the built and natural environment.



## LET US HANDLE YOUR INSPECTION NEEDS



- Underwater Inspections
- Culverts and pipe
  - Locks and dams
  - Port infrastructure
  - Petroleum rigs
  - Potable water tanks

# LOAD INDICATING SYSTEM FROM VALLEY FORGE

The SPC4® Load Indicating System allows users to install a bolted assembly with confidence. The user is able to constantly monitor the clamp load of any SPC4® bolted joint, whether static or dynamic. By easily attaching a probe to the datum disc located on the end of the fastener, the user is able to read the value on a hand held battery powered digital monitor. Optional data gathering and storage of the bolted joint are also available.

## MAXBOLT™ LOAD INDICATING FASTENERS

With MAXBOLT™ Load Indicating Fasteners, you will always know exactly how your bolts are performing under load. MAXBOLT™ Load Indicating Fasteners allow you to install bolts or studs with +/- 5% accuracy and are ASTM F2482 compliant.



## SPC4® ADVANTAGES

- Safer Bolted Joint Assemblies
- Optimized bolted joint integrity
- More efficient and accurate installations
- Reduced downtime
- Reduced inspection time
- Reduced maintenance cost
- Inexperienced operators can install
- Any tightening tool can be used
- Electronic control of installation clamp load
- Tightens to +/- 5% of true clamp load
- Shut-off capability of installation tool at pre-determined clamp load
- Easily displays the amount of clamp load via an electronic hand held monitor.

Each MAXBOLT™ has an accurate and durable load-monitoring device built right in. Along with accurate assembly, the continuous monitoring of clamping forces promotes joint integrity and safer performance. It also reduces expensive downtime caused by premature bolt wear and catastrophic joint failure, allowing for substantial cost savings

- +/- 5% accuracy
- Measure direct tension in the fastener
- Compatible with any tightening tool for quick installation
- Reduces inspection time and maintenance cost
- Sealed mechanical readout on each bolt



## SPC4® READERS

With seven different models to choose from, there really is a reader for every application. Featuring portable and pocket-sized options with both analog and digital reading capabilities. Each reader displays bolt load (joint clamp load) as a percentage of its proof or yield load (customer choice). There are optional abilities to electronically control the installation tool to a pre-set clamp load, as well as data storage and upload for analysis capabilities.



# RENTALS

# MICHIGAN PNEUMATIC



**750SS**  
3/4" Impact Wrench



**751SS**  
1" Impact Wrench



**754SS**  
#4 Spline Drive  
Impact Wrench

# 750SS



**750SS-HGR**  
Optional Hanger



**750SS-DH**  
Optional Dead Handle

Model	Drive	Max Torque Forward	Max Torque Reverse	Length	Weight	Air Inlet Thread	Rec'd Hose Size	Avg. Air Consumption
750SS	3/4" Dual Retainer	1800 ft-lbs	2000 ft-lbs	9"	13.5 lbs	3/8"	1/2"	58 cfm
751SS	1" Dual Retainer	1800 ft-lbs	2000 ft-lbs	9"	13.5 lbs	3/8"	1/2"	58 cfm
754SS	#4 Spline	1800 ft-lbs	2000 ft-lbs	9"	13.5 lbs	3/8"	1/2"	58 cfm



# MICHIGAN PNEUMATIC

## 2900 Series Heavy-Duty Square Drive Impact Wrenches

Features a twin hammer clutch mechanism for high power-to-weight ratio, a pressure fed clutch lubrication system, two piece motor housing for easy maintenance, a built-in muffler for low noise, and direct drive for fast run down.



**MP-2934B2**



**MP-2940B2**



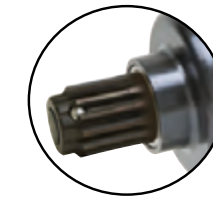
**MP-2950B7**



**MP-2934B9**

**Part No. 2934A90**  
Angle Attachment Assembly

**Part No. 2934-A827**  
Hammer Case Assembly



Optional #5 Spline Anvil



Optional Outside Trigger

Model	Drive	Handle Type	Max Torque	Length	Weight	Air Inlet Thread	Rec'd Hose Size	Avg. Air Consumption
MP-2934B9	1" Through-Hole	Inside Trigger	750 ft-lbs	18-5/8"	35.75 lbs	1/2"	3/4"	47 cfm
MP-2934B1	#5 Spline	Inside Trigger	1500 ft-lbs	11-1/4"	19 lbs	1/2"	3/4"	47 cfm
MP-2934B2	1" Through-Hole	Inside Trigger	1500 ft-lbs	11-1/4"	19 lbs	1/2"	3/4"	47 cfm
MP-2934A1	#5 Spline	Outside Trigger	1500 ft-lbs	11-1/4"	19 lbs	1/2"	3/4"	47 cfm
MP-2934A2	1" Through-Hole	Outside Trigger	1500 ft-lbs	11-1/4"	19 lbs	1/2"	3/4"	47 cfm
MP-2940B1	#5 Spline	Inside Trigger	2000 ft-lbs	12-13/32"	24 lbs	1/2"	3/4"	58 cfm
MP-2940B2	1" Through-Hole	Inside Trigger	2000 ft-lbs	12-13/32"	24 lbs	1/2"	3/4"	58 cfm
MP-2940A1	#5 Spline	Outside Trigger	2000 ft-lbs	12-13/32"	24 lbs	1/2"	3/4"	58 cfm
MP-2940A2	1" Through-Hole	Outside Trigger	2000 ft-lbs	12-13/32"	24 lbs	1/2"	3/4"	58 cfm
MP-2942B1	#5 Spline	Inside Trigger	2700 ft-lbs	12-1/4"	24 lbs	1/2"	3/4"	58 cfm
MP-2942B2	1" Through-Hole	Inside Trigger	2700 ft-lbs	12-1/4"	24 lbs	1/2"	3/4"	58 cfm
MP-2950B1	#5 Spline	Inside Trigger	3000 ft-lbs	14-1/2"	33 lbs	1/2"	3/4"	70 cfm
MP-2950B7	1-1/2" Through-Hole	Inside Trigger	3000 ft-lbs	14-1/2"	33 lbs	1/2"	3/4"	70 cfm
MP-2950A1	#5 Spline	Outside Trigger	3000 ft-lbs	14-1/2"	33 lbs	1/2"	3/4"	70 cfm
MP-2950A7	1-1/2" Through-Hole	Outside Trigger	3000 ft-lbs	14-1/2"	33 lbs	1/2"	3/4"	70 cfm



4920B3



4920B1  
#5 Spline Anvil

### 4920 Series Mini Square Drive Impact Wrenches

The 4900 Series of Super Duty Impact Drivers are engineered and built to withstand the most demanding industrial applications. The compact and lightweight design is ideal for steel erection and other heavy industrial applications found in the petrochemical, mining and power generation industries.

Featuring bronze end plates and corrosion resistant internal components for maximum durability. It is driven by a single jumbo hammer clutch with a pressure fed lubrication system. The 4900 Series Impacts come standard with steel F/R lever, throttle lever and knurled dead handle.

Model	Drive	Handle Type	Max Torque	Length	Weight	Air Inlet Thread	Rec'd Hose Size	Avg. Air Consumption
4920B1	#5 Spline	Inside Trigger	1640 ft-lbs	12-3/4"	15.4 lbs	1/2"	3/4"	65 cfm
4920B3	1" Through-Hole	Inside Trigger	1960 ft-lbs	12-1/4"	13.56 lbs	1/2"	3/4"	65 cfm

### 4900 Series Super-Duty Square Drive Impact Wrenches

Super-duty impacts are engineered to withstand the most demanding industrial application. Featuring bronze end-plates, twitch hammer clutch, a pressure-fed lubrication system and corrosion resistant internal components for maximum durability.

The impact wrenches come standard with steel fwd/rev lever, throttle lever and knurled dead handles. Ideal for the heavy industrial applications found in the petrochemical, steel erection, mining and power generation industries.



4942B2



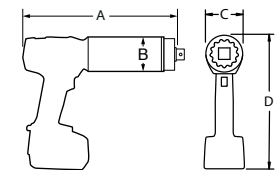
Optional #5  
Spline Anvil

Model	Drive	Handle Type	Max Torque	Length	Weight	Air Inlet Thread	Rec'd Hose Size	Avg. Air Consumption
4940B1	#5 Spline	Inside Trigger	2800 ft-lbs	13"	21.5 lbs	1/2"	3/4"	70 cfm
4940B2	1" Through-Hole	Inside Trigger	2800 ft-lbs	13"	21.5 lbs	1/2"	3/4"	70 cfm
4942B1	#5 Spline	Inside Trigger	3300 ft-lbs	14"	24.64 lbs	1/2"	3/4"	75 cfm
4942B2	1" Through-Hole	Inside Trigger	3300 ft-lbs	14"	24.64 lbs	1/2"	3/4"	75 cfm
4955B1	#5 Spline	Inside Trigger	4200 ft-lbs	16-1/2"	35.5 lbs	1/2"	3/4"	90 cfm
4955B2	1-1/2" Through-Hole	Inside Trigger	4200 ft-lbs	16-1/2"	35.5 lbs	1/2"	3/4"	90 cfm

## RAD TORQUE SYSTEMS

The newly designed B-RAD BL Select offers high speed and longer battery life while incorporating a new torque display with buttons. The B-RAD BL select allows the user to easily select the target torque.

- Now with digital torque settings, able to increase or decrease the value by 10 ft. lbs.
- Torque ranges up to 5,000 ft/lbs (7,000 Nm).
- Equipped with the latest lithium-ion technology.
- Suitable for pre-torque and service jobs where electricity or compressed air is not available.
- Longer battery life as energy is used more efficiently



PART NUMBER	TOOL MODEL	DRIVE SIZE	TORQUE (ft. lbs.) LOW	TORQUE (ft. lbs.) HIGH	RPM	WEIGHT (lbs.)	DIMENSION A	DIMENSION B	DIMENSION C	DIMENSION D
28283	B-RAD BL SELECT 500	0.75"	130	500	21.5	7.7	9.1"	2.5"	2.65"	10.3"
28285	B-RAD BL SELECT 1000	0.75"	200	1000	10.5	7.8	9.1"	2.5"	2.65"	10.3"
28286	B-RAD BL SELECT 1000-2	0.75"	200	1000	71	9.4	11"	2.5"	2.65"	10.3"
28287	B-RAD BL SELECT 1500	1.0"	200	1500	6	8.9	9.6"	2.7"	2.7"	10.3"
28288	B-RAD BL SELECT 1500-2	1.0"	300	1500	19.5	10.7	11.75"	2.7"	2.7"	10.3"
28289	B-RAD BL SELECT 3000	1.0"	600	3000	3	13.3	11.2"	3.2"	3.2"	10.5"
28290	B-RAD BL SELECT 3000-2	1.0"	600	3000	20	14.7	13.25"	3.2"	3.2"	10.5"
28291	B-RAD BL SELECT 5000	1.5"	1000	5000	2.1	19.3	11.6"	3.75"	3.75"	10.7"

Accuracy of +/-5%, Repeatability of +/-2%

RAD TORQUE SYSTEMS

# ANNULAR CUTTERS (2" DEPTH OF CUT)

Broach cutting using Drillco cutters means you can produce large diameter holes efficiently and quickly with less energy, faster penetration and less thrust. Rather than drilling out the metal with a solid drill, Drillco cutters remove only the periphery of the hole, ejecting a slug at the end of the cut. Tests show that a solid drill will take 3 minutes, 45 seconds to drill a 1-1/4" hole in 3/4" plate. A Drillco cutter can do the same job in 35 seconds. 9200SE series cutters are available pre-packaged with corresponding pin on sizes 7/16" - 1-1/2". The Nitro® ranges of Annular Cutters are made from Cobalt, offering even better performance over the standard High Speed Steel ranges.

Carbide Tipped Annular Cutters maximize the performance of any Magnetic Drill Machine, delivering reamed-quality, bur free holes in a fraction of the time of standard HSS Annular Cutters. Eliminates the need for costly pilot holes & step drilling. 3/4" shanks are universal and fit most magnetic drilling machines including those with tool-less arbors and set-screw arbors. Larger diameters and depths on our Carbide Tipped Cutters are available by special order with short lead times.

## HIGH SPEED STEEL / **NITRO** COBALT/ CARBIDE TIPPED Fractional

**PACKAGING:**  
All sizes are individually packaged.

Size	HSS 9200SE EDP No.	HSS 9200SE WITH PINS	Nitro® 9200N EDP No.	Carbide Tip 9200CT EDP No.	Size	HSS 9200SE EDP No.	HSS 9200SE WITH PINS	Nitro® 9200N EDP No.	Carbide Tip 9200CT EDP No.
7/16"	92SE128	92SE128K	92N128	-	1-3/8"	92SE224	92SE224K	92N224	92CT224
1/2"	92SE132	92SE132K	92N132	-	1-7/16"	92SE228	92SE228K	92N228	92CT228
9/16"	92SE136	92SE136K	92N136	92CT136	1-1/2"	92SE232	92SE232K	92N232	92CT232
5/8"	92SE140	92SE140K	92N140	92CT140	1-9/16"	92SE236	-	92N236	92CT236
11/16"	92SE144	92SE144K	92N144	92CT144	1-5/8"	92SE240	-	92N240	92CT240
3/4"	92SE148	92SE148K	92N148	92CT148	1-11/16"	92SE244	-	92N244	92CT244
13/16"	92SE152	92SE152K	92N152	92CT152	1-3/4"	92SE248	-	92N248	92CT248
7/8"	92SE156	92SE156K	92N156	92CT156	1-13/16"	92SE252	-	92N252	92CT252
15/16"	92SE160	92SE160K	92N160	92CT160	1-7/8"	92SE256	-	92N256	92CT256
1"	92SE164	92SE164K	92N164	92CT164	1-15/16"	92SE260	-	92N260	92CT260
1-1/16"	92SE204	92SE204K	92N204	92CT204	2"	92SE264	-	92N264	92CT264
1-1/8"	92SE208	92SE208K	92N208	92CT208	2-1/16"	92SE304	-	92N304	-
1-3/16"	92SE212	92SE212K	92N212	92CT212	2-1/8"	92SE308	-	92N308	92CT308
1-1/4"	92SE216	92SE216K	92N216	92CT216	2-3/16"	92SE312	-	92N312	-
1-5/16"	92SE220	92SE220K	92N220	92CT220	2-1/4"	92SE316	-	92N316	92CT316



9200SE - HSS



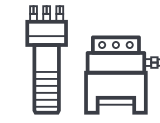
9200N - Cobalt



9200CT - Carbide Tipped

# BOLT TENSIONING SOLUTIONS

WHATEVER YOUR BOLTING, CHALLENGE WE HAVE THE SOLUTION



Wide range of products for all market segments



Lightweight modular construction



Latest technology and innovation



Controlled tightening procedure



Simultaneous tightening of bolts



Significant time and labor savings



MECHANICAL TENSIONING



## TIGHTEN WITH SIMPLE HAND

Superbolt mechanical multi-jackbolt tensioners (MJTs) are an innovative way to tighten large bolts safely and accurately with the use of simple hand tools. Actual tensioning is achieved by tightening the jackbolts that encircle the nut body. Superbolt tensioners are designed as a direct replacement for conventional nuts and bolts. There is low risk of galling, even in space-restricted areas.



Latest technology and innovation



Fully interchangeable with TSR



Significant time and labour savings



Improved durability



HYDRAULIC TENSIONING



## TIGHTEN MULTIPLE BOLTS SIMULTANEOUSLY

Boltight hydraulic bolt tensioners are high quality tools especially useful for tightening flanges or other critical bolted connections. Multiple tensioners can be used to deliver an even and accurate pre-load. A wide range of products are available for all market segments and custom products can be designed and manufactured to the clients exact specification.



# THE FASTEST AUTO RETURN TENSIONER ON THE MARKET

## TSR+ FEATURES

- Twin port hydraulic connections
- Oversized threads
- Gear drive nut rotation
- Swivel connectors
- Special designs

## INTERCHANGEABLE

TSR+ load cells have exactly the same overall dimensions and hydraulic specification as the existing TSR load cells. This ensures interchangeability and ease of customer upgrades to the new range.

## DURABLE

Operational performance does not degrade during the life of the tool. TSR+ completed more than 10,000 full pressure/stroke cycles during in-house testing.

## INCREASED SAFETY

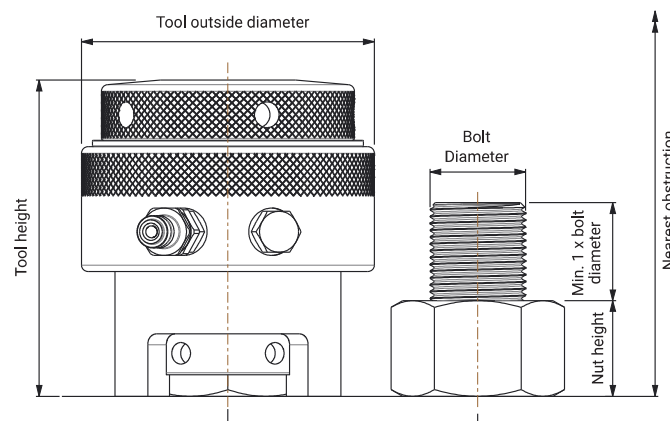
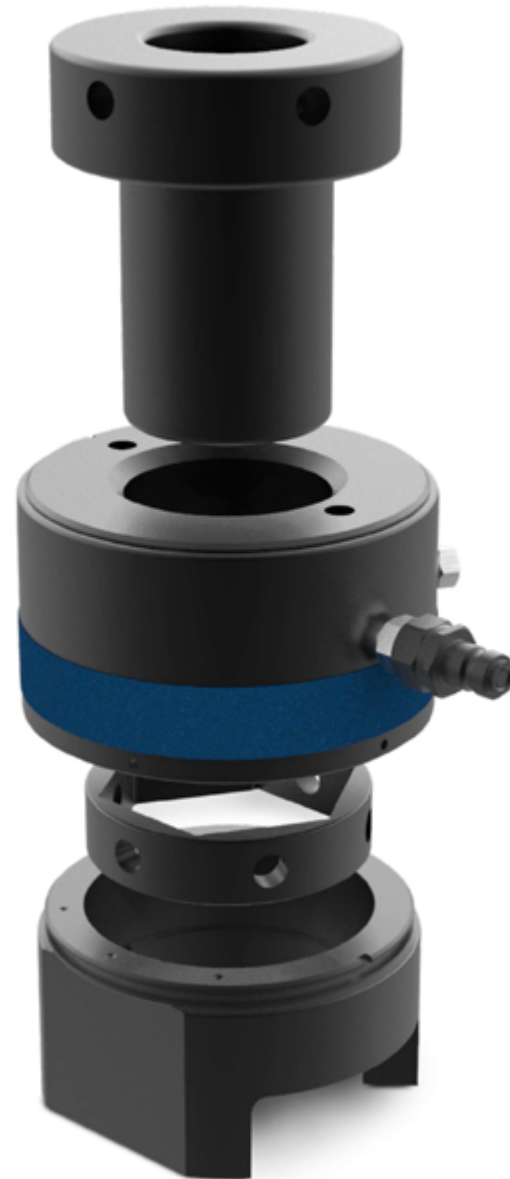
TSR+ Load cells have a relief valve to prevent accidental over stroke of the tool. This safety mechanism prevents seal blow outs and the users exposure to ejected oil.

## PREMIUM SURFACE TREATMENT

All load cells have Boltight's unique surface finish which provides a long lasting finish against harsh environments.

## IMPROVED SEAL TECHNOLOGY

Latest design eases seal change-outs and enhances general performance throughout high cycle usage.



# HYDRAULIC NUTS

Boltight's hydraulic nuts are available in various types in a wide range of sizes. Typically they range from M24 to M250 but all nuts are made to order so manufacturing custom nuts to suit the application is commonplace.

## DESCRIPTION

A hydraulic nut incorporates its own internal hydraulic jack which enables large diameter bolts to be tensioned to high and accurate pre-loads. They are quick to install using a hydraulic pump which activates the internal jacking system. The effort required to tighten a very large diameter bolt is reduced to the effort needed to operate the pump and if an air or electrically driven pump is used the tightening process is even quicker.

As there is no nut rotation during tightening a hydraulic nut the operation can be performed in a confined space and torsional stresses or thread damage are eliminated.

## HOW THEY WORK

The nut develops a load directly proportional to the oil pressure, this can be accurately controlled and because it is developed hydraulically it is evenly applied.

Multiple nuts can be connected with hoses for simultaneous operation allowing all bolts in a joint to be evenly loaded to the same high and accurate pre-load.

When oil pressure is applied, the joint is compressed and the bolt stretches, this produces a gap between the body of the nut and the piston. Depending on the type of nut, either shims are inserted into the gap or a locking collar on the piston is turned. When the hydraulic pressure is released the load is transferred onto the shims or the locking collar to retain the load. The hydraulic nut is self aligning while under pressure and misalignment or flange rotation will produce a variation in the gap between the nut body and the piston.



## BENEFITS

- Even and accurate pre-load
- No flogging hammers or scanners required
- Single or multiple tightening operation
- Ideal for confined spaces
- Self-aligning (shim type)
- Low loss of initial load (shim type)
- Thread damage eliminated

In the case of shim type nuts, tapered shims can be made and fitted to eliminate the effects of misalignment and flange rotation. In the case of collar type nuts, a spherical washer would need to be fitted under the hydraulic nut. Achieving a bolt pre-load which is in excess of the working load and eliminating bending and torsional stresses greatly improves the fatigue performance of the bolt. The internal jacking system is not under any pressure when the nut installation is complete and so does not deteriorate when the nut is in service providing it is not exposed to high radiation doses or elevated temperatures.

We offer upper & lower column. Call for design information

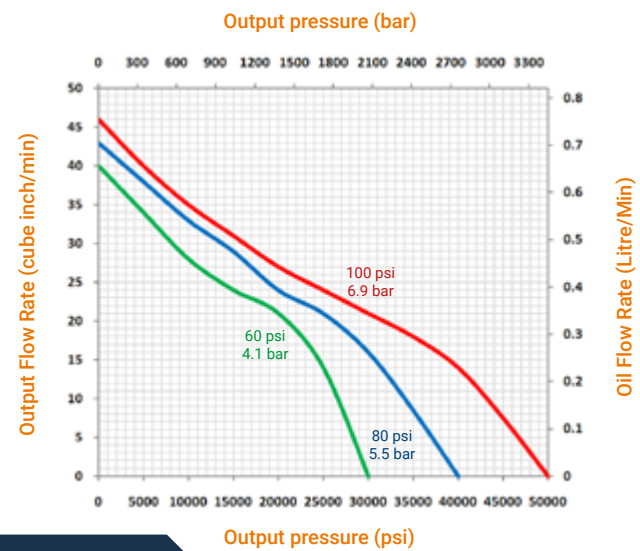
# AIR DRIVEN PUMP UNITS

Boltight's air driven pump units have been designed for use with all Boltight tooling where speed of operation is essential. They are easy to use, perform well and are incredibly reliable. Boltight offers air driven pump units in a range of pressures and flow rates.

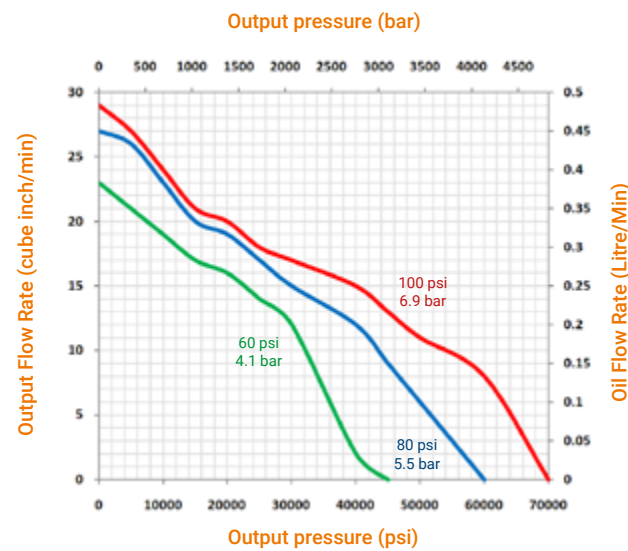


SPECIFICATION	STANDARD FLOW RATE	HIGH FLOW RATE
Available output pressure	1000 bar, 1500 bar & 2500 bar (14500 psi, 21750 psi & 36250 psi)	1000 bar, 1500 bar & 2500 bar (14500 psi, 21750 psi & 36250 psi)
Consumption of free air	800 litres per min. (28 std. cubic ft. per min.)	1600 litres per min. (56 std. cubic ft. per min.)
Air pressure required	4 - 7 bar (60 - 100 psi)	4-7 bar (60 - 100 psi)
Weight (without oil)	19.5 kg (42.9 lbs)	23 kg (50.6 lbs)
Oil reservoir size	8.5 litre (0.3 cubic ft.)	8.5 litre (0.3 cubic ft.)
Recommended oil	ISO-10 , ISO-32 or ISO-46	ISO-10 , ISO-32 or ISO-46

**OIL FLOW RATE - STANDARD**



**OIL FLOW RATE - HIGH FLOW**



# SERVICES

# CROSS COUNTRY'S TORQUE & PRESSURE CALIBRATION LABORATORY

Cross Country is proud to announce the opening of our A2LA accredited Torque and Pressure Calibration Laboratory. The Lab is capable of providing high quality torque and pressure calibrations in accordance with ISO/IEC 17025:2017 standards. Our experienced and knowledgeable staff look forward to handling your calibrations needs. Contact us today for more info!



A2LA Cert #6303.01

## PRESSURE CALIBRATIONS

<b>HYDRAULIC &amp; PNEUMATIC pressure gauges</b>	Hydraulic 0-40K PSI Pneumatic 0-10K
--	--

## TORQUE CALIBRATIONS

<b>BATTERY &amp; PNEUMATIC wrenches &amp; screwdrivers</b>	751-6000 ft·lbf
--	-----------------

<b>MANUAL wrenches &amp; screwdrivers</b>	10-100 in·lbf 50-500 in·lbf 25-250 ft·lbf 100-100 ft·lbf
---	---

### REASONS TO CHOOSE CROSS COUNTRY AS YOUR CALIBRATIONS SERVICE PROVIDER

- Quick turn around times on most tools
- Knowledgeable and friendly customer service
  - Free certification renewal service
  - Pickup and delivery available

### WHY CHOOSE ISO/IEC 17025:2015 CALIBRATIONS?

- Acts as an insurance for your companies work
- Provides traceability of measurement to national standards
- Tools meet required safety and compliance guidelines
  - Test results accepted internationally
  - Maintains tool traceability

# AQUASTRATOS DRONE & UAV SERVICES



## OUR MISSION

Our mission is to maintain a safe, clean, and sustainable environment for all and we do so by providing our clients with high quality data and reconnaissance, a research backed analysis of their project, and outstanding customer service.

## CAPABILITIES

- + 4K Resolution Videos
- + Multiple drones
- + Quick deployment
- + Aerial & Underwater underwater drones
- + Skilled in a variety of mapping/editing software

## QUALIFICATIONS

- + FAA Certified Pilots
- + State and federal permitting process experience.
- + TWIC Certified



## ABOUT US

Aquastratos is a client-focused environmental consulting firm serving public and private organizations across the southeastern United States. Our approach combines environmental planning and regulatory expertise with innovative drone reconnaissance technology to meet our client's needs. We specialize in aerial and underwater inspections, reporting, monitoring, and mapping of the built and natural environment.

## OUR SERVICES



### PHOTOS & VIDEOS

- Aerial & underwater
- Interior & exterior
- Aerial and 3D Mapping
- 4K Resolution videos
- Editing & Production



### INSPECTIONS & MONITORING

- Phase I ESA's
- Environmental Impact Statements
- Site Planning
- Wetland delineations
- Compliance monitoring



### MAPPING & REPORTING

- Aerial mapping
- Thermal mapping
- GIS mapping
- Topographic mapping
- Permitting
- 3D Analysis
- Multi-year data management

