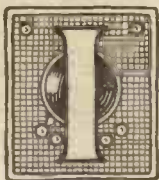


Some interesting details of the new station to augment the long distance CW traffic from and to ships; formerly handled by Devizes



IN August, 1920, the British Post Office opened a Wireless Station at Devizes, in Wiltshire, for maintaining communication with ships beyond the normal working range of the existing coaststation system, which is not greater than about 150 miles.

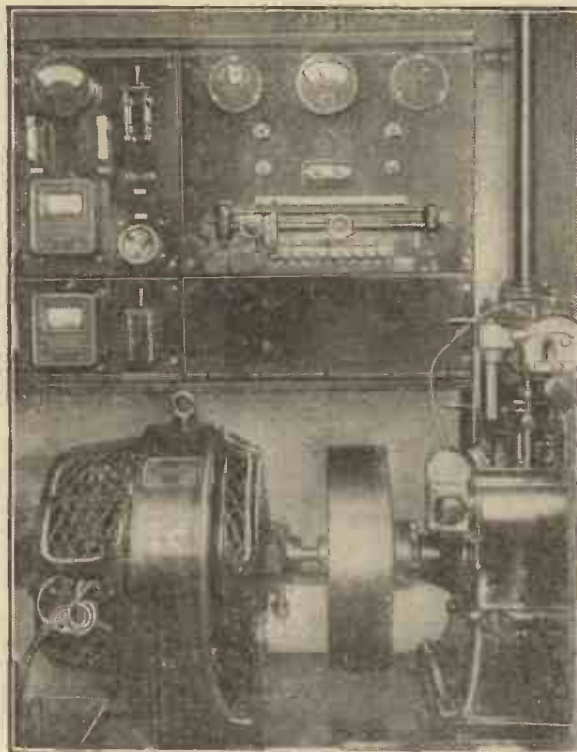
This station was equipped with a continuous wave transmitter and receiver working on two wavelengths of 2,100 and 2,400 metres to ships fitted with long range continuous wave receivers and 1½ kw. continuous wave transmitters to give a system having a maximum working range of from 1,500 to 2,000 miles.

Rapid Increase of Traffic

At the time of opening, only about 40 ships were so equipped, but by the beginning of 1923 this number had increased to 120, and as the facilities became known, the land station was rapidly outgrown. In order to cope with the increasing traffic, two possible courses were open. The first, to erect a new land station with transmitter and receiver some distance from Devizes, and the second, to build a new receiving station to house two or more receivers, and to install a second transmitter at Devizes. The

second method was finally adopted, as being the more economical and workable, particularly from the point of view of future extension. Accordingly, work was commenced on the new receiving station near Burnham-on-Sea in Somerset, the station being completed and opened for traffic on February 2 of this year. The wave lengths of 2,100 metres and 2,400 metres were

retained for the new service. The continuous wave transmitters with which the ships are equipped are capable of transmitting over a wave range of from 1,900 metres to 2,900 metres, so that more receivers can be added at Burnham as traffic requirements continue to grow. The site for the receiving station was chosen and laid out with a view to providing for such extension.



A view of one of the two 3 kw. generating sets. The automatic switchboard can be seen at the back.

Remote Control of Transmitter

With the adoption of the separate receiving and transmitting stations arose a necessity for some system of remote control whereby the operator at Burnham could listen to signals from ships, and could immediately reply by keying a transmitting set at Devizes. It was also desirable on grounds of economy that the same operator should be able to start and stop the transmitting set when he commenced or finished his outgoing traffic. The apparatus employed for this purpose is explained later.

The general appearance of the station can be seen from the photograph at the head of this article. The building itself is a single-storied brick structure, and contains a power room, battery room, two store-rooms, instrument room, land line room, office for the officer-in-charge, and retiring room