

South Bay Model Shipwrights
Founded by Jean Eckert 1982
Website : <http://www.sbmodelships.com>

The Foghorn

October 2023

Happy Halloween!!



Fig. 1. *Shiver me Timbers from the Dead Sea!*
(<https://bogleech.com/abyss-anglers>)





Future Course Headings...

• **The In-person meeting for next month will be November 11, 2 PM. Zoom meeting will be Wednesday, November 22, 7 PM the day before Thanksgiving. Make note of the change in scheduling due to the Holidays!**

Participation from the SBMS club at **Good Sam's Showcase of Miniatures** in San Jose was a bit spare this year with only five models contributed to our exhibition. Nonetheless, they were all masterpieces so there was still much to admire. Fig.2. shows our table. I hope there will be more models next year. We have a whole year to complete more! Close up pictures below in the **Model Shipyard** section.



Fig. 2. The SBMS exhibition table at **Good Sam's Showcase of Miniatures**.
We need more models so time to get to work!

With November coming up, the Holidays are starting to approach. Our In-person meeting will be on the second Saturday of **November 11 at 2 PM**. As usual, it will be held at:

The Game Kastle
1350 Coleman Ave
Santa Clara, CA 95050
(408) 243-4263

Our Zoom meeting, however, as scheduled, is coinciding with **Thanksgiving Day**. So. we will have to move this meeting to the preceding day on **Wednesday, November 22 at 7 PM**. Keep an eye out on your inbox for the Zoom specs.

• **San Francisco Model Yacht Club Swap Meet, Saturday, November 4, 10 AM.** The **San Francisco Model Yacht Club** has held this swap meet annually in the **SFMYC club house** off **Spreckels Lake in Golden Gate Park** for quite a long time, but we have never noted it in the Foghorn. This year, I intend to go and try to sell some left-over unbuilt kits that I have retrieved from various estates. This sounds like a fun event and look forward to see what else shows up aside from finding good homes for surplus kits. Set up time is **10 AM** and sales start from **11 AM** until whenever.

• **Nautical Research Guild General Membership Meeting on Zoom. Saturday, November 18, 8:30 AM PDT.**



The
Nautical Research Guild®

In the past, the NRG held an in-person annual convention, usually at a well-known maritime museum, wherein speakers gave informative talks and workshops on model building, maritime history and archeology. Unfortunately, the pandemic put an end to that, so far, and this event has not yet restarted.

Nonetheless, we just got an announcement from the NRG that informed us that a Zoom version of this convention will be held **Saturday, November 18, 8:30 AM PDT for those of us on Pacific Time**. The announcement offered it at other time zones in the US also suggesting that the event will be conducted online.

Should you have a topic that you would like to present please email **Mary van Dahm** at the NRG office: nrghomeoffice@gmail.com by October 19. More specifics about this event will also be issued by the NRG soon. (An announcement about this event was sent separately by email to the SBMS

membership on October 17 before the October 19 deadline listed above in an attempt to notify everyone before October 19.)

•IPMS Tri-City Classic, Saturday November 25, 9 AM-5 PM



Fig. 3. George Sloup and John Garis at the 2022 IPMS convention in San Jose.

Now we have clarification on the IPMS (International Plastic Modelers Society) convention for this year. It will be hosted by the **IPMS Fremont Hornets** at:

**Fremont Elks Lodge
38991 Farwell Dr.
Fremont, CA**

From **9 AM-5 PM on Saturday, November 25**, two days after Thanksgiving. There will be a contest on items related to Cold War themes. More details of this event can be found at:

<https://fremonthornets.yolasite.com/tricity-events-news-present-and-past.php>

All models brought for display must be registered. The registration forms can be found at the Fremont Hornets website listed above.

Like the Silicon Valley Scale Modelers convention of past years, this should be a really fun event with lots of models of everything made mostly from plastic, but other materials also being welcome. The SBMS will have a display table devoted to our hobby of ship model building so we will need complete and in-progress ship models for display as well as volunteers to staff the table!

• **SBMS Christmas Party Wednesday, December 13, 6PM.**

It is Christmas time again! We have tentatively decided to return to our old favorite restaurant, **Chef Chu's Chinese Restaurant** at the corner of El Camino Real and San Antonio Rd. in Los Altos on **Wednesday, December 13, 6 PM** for dinner.

However, since we are still more than a month away from the event, we want to give everyone a chance to offer any suggestions for another date and/or restaurant that they would like for us to consider. You can make your suggestion at any of our upcoming November meetings or to Prez Jim Rhetta and/or VP Ken Lum.



Maritime Matters of the Month *(Ken Lum)*

• **SBMS needs a new webmaster.** After many years of conscientiously setting up and maintaining the SBMS website (Fig. 4) at:

<http://www.sbmodelships.com>

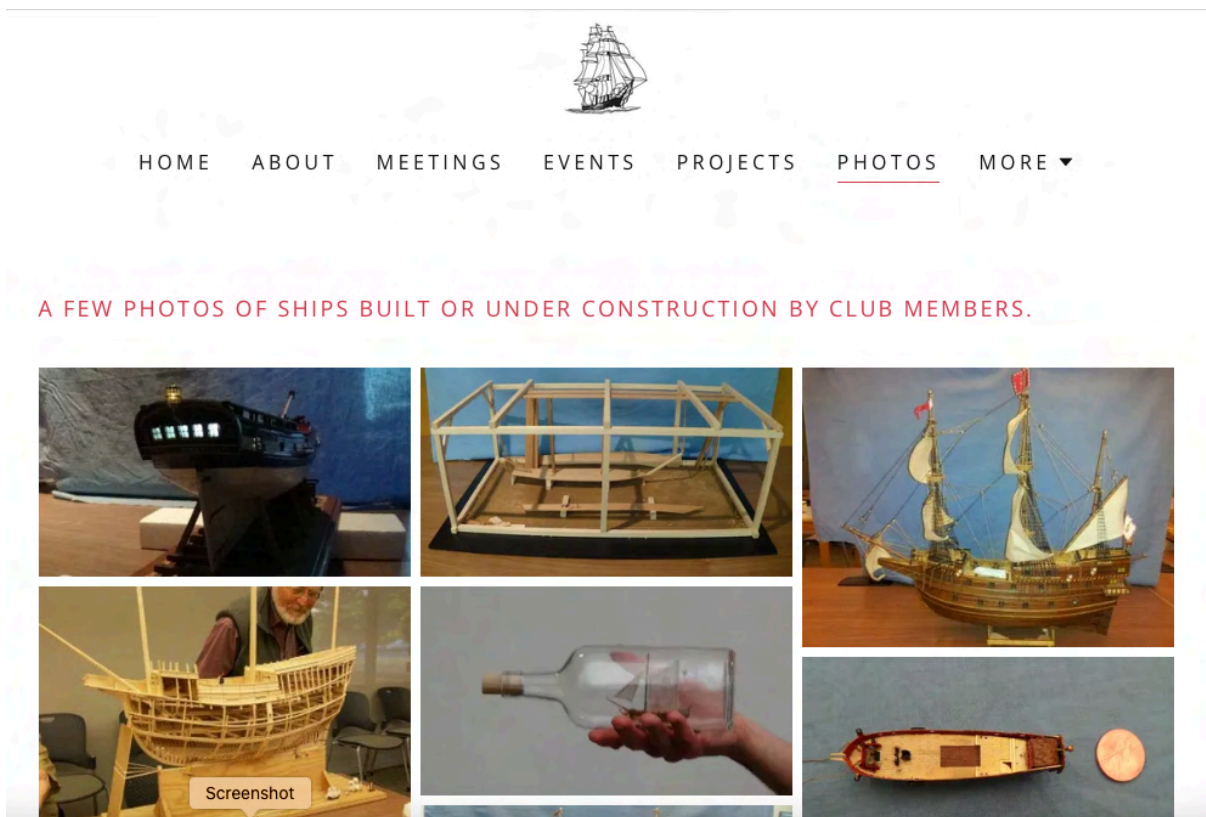


Fig. 4. The Gallery page of the SBMS website. So many beautiful models over the years!

Jim Tortorici is desiring to pass this duty to another member beginning January, 2024. This website has brought in many inquiries about restoring damaged ship models over the years which has helped to keep the club treasury filled. **Thank you so much, Jim!**

Please check with Jim at: oday20@earthlink.net about getting oriented in working with this website, especially if you have experience with maintaining a such a thing. It is actually a very valuable club asset that has kept the public informed about our club! And don't worry. It is not at all like being a galley slave!

• What was the Farthest Hit by a Battleship in WW2?

The battleships built and deployed during World War 1 and World War 2 were the ultimate weapons of their time. The ability to field their large artillery pieces to many places in the world by ships at sea gave these weapon systems a tremendous ability to project military power to distant places.

In general, since WW 1, the most powerful battleships and battlecruisers of the belligerent powers could lob their approximate 1,250 lb to 1,900 lb. to 2,700 lb projectiles out to a range of 14 to 26 miles. The largest shells varied in size from 12" to 18" diameter (Fig. 5).

But in the heat of battle, what were the most distant actual hits ever attained? While surfing YouTube, I found a fascinating video illustrating the answers to this question. It can be watched at:



Fig. 5. **BANG!!** *USS Iowa* unleashes a broadsides of nine 16-inch guns on 15 August 1984 during a firepower demonstration

<https://www.youtube.com/watch?v=OPHR1rhnJFA>

For quick reference I have tabulated below the longest battleship hits in battle from this video. The left column denotes the ship(s) doing the shooting. And the right column denotes the ship(s) being hit.

1. USS Massachusetts (BB-59)
South Dakota Class Battleship
US Navy
Operation Torch
November 8, 1942

Jean Bart (while in harbor)
Richelieu class Battleship
French Marine Nationale

=====→
29,000 yds or 16.48 miles

2. Scharnhorst (and Gneisenau)
Scharnhorst Class Battleship
Nazi Germany Kriegsmarine
Operation Juno
Jun 7, 1940

HMS Glorious
Aircraft Carrier
Royal Navy

=====→
28,105 yds or 15.97 miles

3. USS Massachusetts (BB-59)
South Dakota Class Battleship
US Navy
Battle of Casablanca
November 8, 1942

Milan
Aigle-class destroyer
French Marine Nationale

=====→
27,996 yds or 15.9 miles

This hit is questionable and never actually claimed by US Navy

4. HMS Warspite
Queen Elizabeth Class Battleship
Royal Navy
Battle of Calabria
July 9, 1940

Gulio Cesare
Conte di Cavour-class
Battleship
Italian Regia Marina

=====→
26,000 yds or 14.77 miles

5. USS West Virginia (BB-48)
Colorado Class Battleship
US Navy
Battle of Leyte Gulf
October 24, 1944

IJN Yamashiro
Fuso Class Battleship
Imperial Japanese Navy

=====→
21,872 yds or 12.43 miles

6. IJN Haguro
Myoko Class Heavy Cruiser
Imperial Japanese Navy
Battle of Java Sea
February 27, 1942

HNLMS DeRuyter
Light Cruiser
Royal Netherlands Navy
and *HMS Exeter*
Heavy Cruiser
Royal Navy

=====→
20,997 yrds or 11.93 miles

7. Prinz Eugen (and Bismarck)
Admiral Hipper Class Cruiser
Nazi Germany Kriegsmarine
Battle of Denmark Strait
May 24, 1941

HMS Hood
Battlecruiser
Royal Navy

=====→
20,778 yds or 11.8 miles

While the big guns of battleships definitely produced really spectacular fireworks (Fig. 5) during battle operations and were certainly the most effective long-range weapons of the era, they were immediately rendered obsolete by aircraft and aircraft carriers at the outset of WW 2. The artillery shells and battleships that carried them were disadvantaged at least by:

1. The expenditure of all propellant at the start of a shell's trajectory. Artillery shells did not carry any propellant to extend their range.
2. Battleship artillery shells had no on-board guidance or maneuvering system to improve accuracy. All aiming was mostly done with analogue fire control systems at the ship of origin. The US Naval War College is cited as having ascertained that naval artillery in WW 2 was only accurate 32% of the time at a range of nine miles. No doubt, this fell dramatically with increased distance.
3. It was rare for battleships to be used in tactical situations for which they were designed (esp. line-of-battle scenarios). More often, they ended up in chaotic free-for-alls for which they were not so well designed and often ended up just being large easier-to-hit targets. Often, they were most useful as mobile anti-aircraft batteries and for on-shore bombardment to support amphibious landings.
4. Battleships were expensive and time-consuming to build making them often ineffective at providing good tactical return on investment.

Carrier-borne aircraft could solve problems 1 and 2 by providing on-board propulsion systems to extend range and on-board guidance systems in the form of a pilot. The adoption of guided ballistic cruise missiles, exchanged the human pilot for high speed electronic guidance systems which did not put the life of a pilot at so much risk.

The French-built Exocet missile, which was so effective against British ships in the Falklands conflict of 1982, is said to be accurate to 43 miles. The current Block 3 Exocet has a range of around 120 miles. The US Tomahawk missile is said to be effective out to an astonishing 1,500 miles. Although cruise missiles are much more expensive than artillery shells, they are much more accurate at hitting their intended target thus greatly improving efficiency.

While carriers are much more flexible in confronting a number of varied tactical situations, their increasing expense and size limits how many can be built and deployed. This also necessitates heightened caution in keeping these assets out of harm's way which can actually reduce their ultimate usefulness. And so, today's supercarriers are increasingly at risk of problem 4. Recall that the loss of four fleet carriers by the Imperial Japanese in WW 2 at Midway put them at a permanent defensive strategic position for the rest of WW 2.

Finally, never having served in the armed forces, I will have to confess these opinions are only those of this rank armchair amateur



Methods to Our Maritime Madness

- **Wireless LED Lights for Models** Miniature lights have been available to install in various models for a long time. They started to be offered as tiny incandescent bulbs called **grain-of-wheat bulbs** that had to be powered by wires installed inside models. Then, **light-emitting diodes (LEDs)** became available that still needed internal wires for power.

Most recently, **induction coil chargers** became available for charging mostly smart phones and iPads without any need for wires to be attached to devices for charging. The charging coils just needed to be in proximity to the target devices to generate a current.

This “wireless” form of charging has now been applied to miniature LED lights for various applications. **Clare Hess** has introduced us to **wireless LED lights** for illuminating models with his first application to a model of the **Moon Bus** model from the movie **2001: A Space Odyssey** (fig. 6.).



Fig. 6. LED lights illuminating the interior of a **Moon Bus** model from the movie, **2001: A Space Odyssey**. The LED bulbs are not attached to any wires inside the model. Instead, the bulbs are powered wirelessly from an electrical induction coil installed in the base. There is no need to install wiring inside the model itself. (Clare Hess)

The advantage of this kind of lighting is that there is no longer a need to feed electrical wire into the model itself. The light bulbs merely need to be installed in any desired location in the model. The induction coil responsible for powering a current in the bulbs is installed in the base of the model display in proximity to the model and still needs to be plugged into a power source (Fig. 7). Search “Wireless LED” for these online to see where they can be purchased.



Fig. 7. A wireless LED induction charger kit with miniature LED bulbs (Amazon)

Another thing has become wireless or what Albert Einstein called “Spooky Action at a Distance” Will wonders never cease!



Kit News (Ken Lum): Clare Hess has informed me about three new models from **Artesania Latina**.

Wasa (1628) 1:65 scale \$899.99

The famous Swedish warship which sank in Stockholm harbor on her maiden voyage in 1628. Retrieved in 1961 and restored as a museum ship in Stockholm. The **Wasa** looks especially nice. The late **Charlie Parsons** built one without rigging and is now on display in the **San Mateo County History Museum** in downtown Redwood City.



Fig. 8. *Wasa* model from Artesania Latina (Artesania Latina)

***Soleil Royal* (1670) 1:72 scale \$899.99**

Built for Louis XIV in 1670. Participated in the **Battle of Beachy Head** against the English in 1690 near the Isle of Wight. Also participated in the **Battle of Barfleur** and the **Battle of Cherbourg** both in 1692 all part of the Nine Year's War.



Fig. 9. *Soleil Royal* model by Artesania Latina (Artesania Latina)

***Santissima Trinidad* (1769) 1:84 scale \$799.99**

Lead ship of the Spanish fleet at Trafalgar in 1805 joining with the French against the English. She was heavily damaged in the battle and eventually captured by the English. However, due to the heavy damage she was scuttled by her captors.



Fig. 10. *Santissima Trinidad* model by Artesania Latina (Artesania Latina)

These models have particularly fine photographic assembly instructions that need to be downloaded and printed and are not included with the kits. A good example of one of these manuals can be found at:

<https://artesanialatina.net/en>

and click on “Instructions and Downloadable Content” for any listed ship model kit.

All these models are available from **Ages of Sail**.



Under Construction at the Model Shipyard

These are the SBMS models which were brought to the **Good Sam's Showcase of Miniatures** convention in San Jose. Though not many models this year, but the workmanship is first rate!



Fig.11. **Clare Hess's** model of the **Medway Longboat** built from a kit by **Model Shipways** developed by Chuck Passaro. Very cute!



Fig. 12. Models of traditional Japanese boats by Clare Hess. One is a fishing boat from the Hozu river near Kyoto. The other is a seaweed harvesting boat of a type used in Tokyo Bay until the 1960s. The models were built from Japanese Cedar or Sugi.

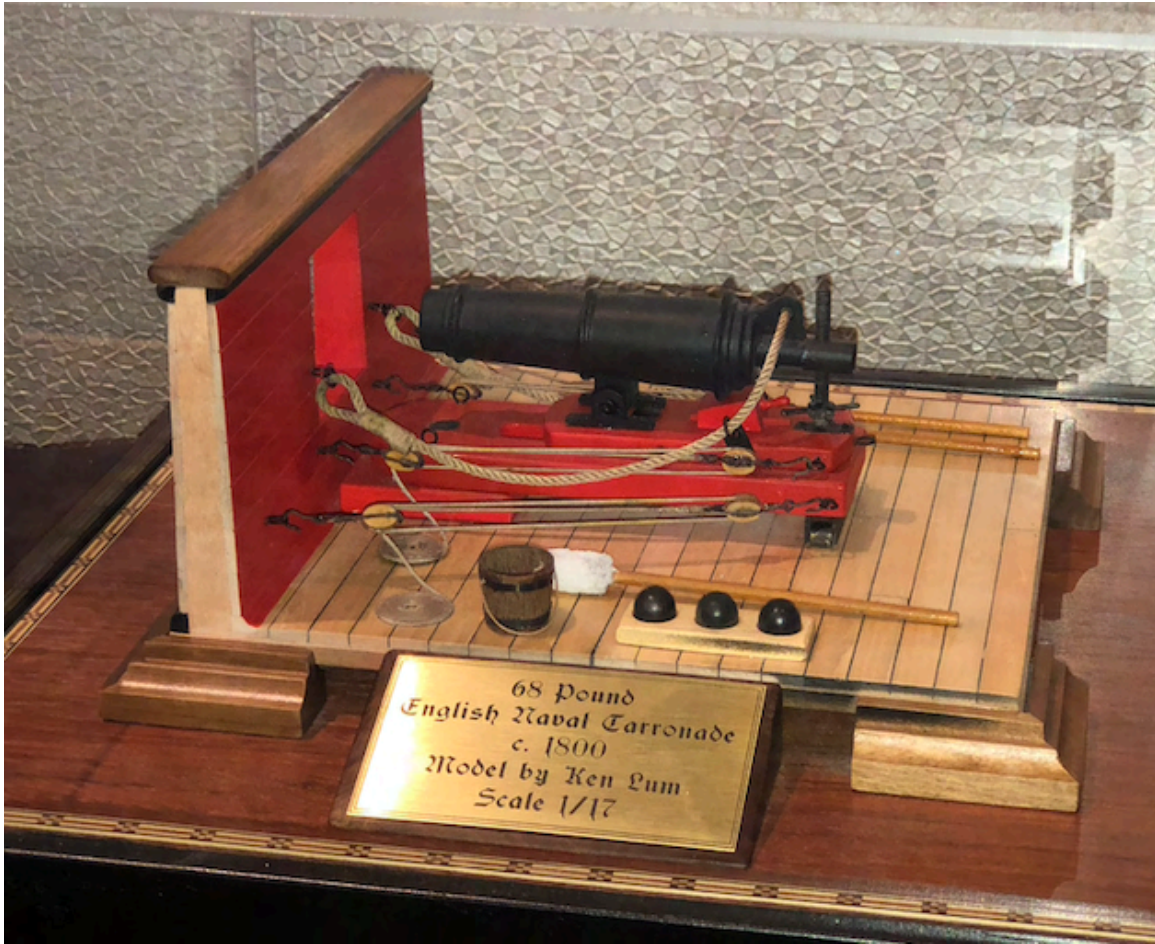


Fig. 13. **68 pound English Carronade** from around 1800. Model by Ken Lum.



Fig. 14. **Xebec** model by Jacob Cohn from a kit by Amati.



SBMS Club Officers

President	Jim Rhetta	email: jmrhetta@aol.com
Vice President And Newsletter Editor	Ken Lum	email: lum40@comcast.net
Treasurer	Jacob Cohn	email: jcohnster@gmail.com
Harbor Master	George Sloup	email: george.p.sloup@outlook.com
Webmaster	Jim Tortorici	email: oday20@earthlink.net



Annual Club Membership

Send in your Club Membership with attached renewal form! Submit a \$20 check made out to South Bay Model Shipwrights and mail to Jacob Cohn, 726 7th Ave, Redwood City, CA 94063. Welcome Aboard!

Membership Form

Make check out for annual membership of \$20.00 to South Bay Model Shipwrights and mail to Jacob Cohn, 726 7th Ave, Redwood City, CA 94063

Print your name _____ Phone# _____

Address



Receive our Foghorn newsletter by email? Yes ___ No ___

Email address _____

To order a club name badge, add \$15.00 to your check and print your name exactly as it should appear on the badge

