

# Owatonna Public Utilities Utilizes Oblique Aerial Imagery to Make Sense of Overhead Power Lines

Katherine Meixell  
GIS Technician





# OPU Making sense of Power Lines

- Problems with CAD information
  - CAD lines included minimal identification information and were not continuous or connected other objects
  - Transmission lines were included in distribution lines within city limits
  - No data existed for Transmission lines outside Owatonna city limits
    - OPU helps maintain transmission from Byron to Waseca and from Owatonna to Faribault





# OPU Making sense of Power Lines

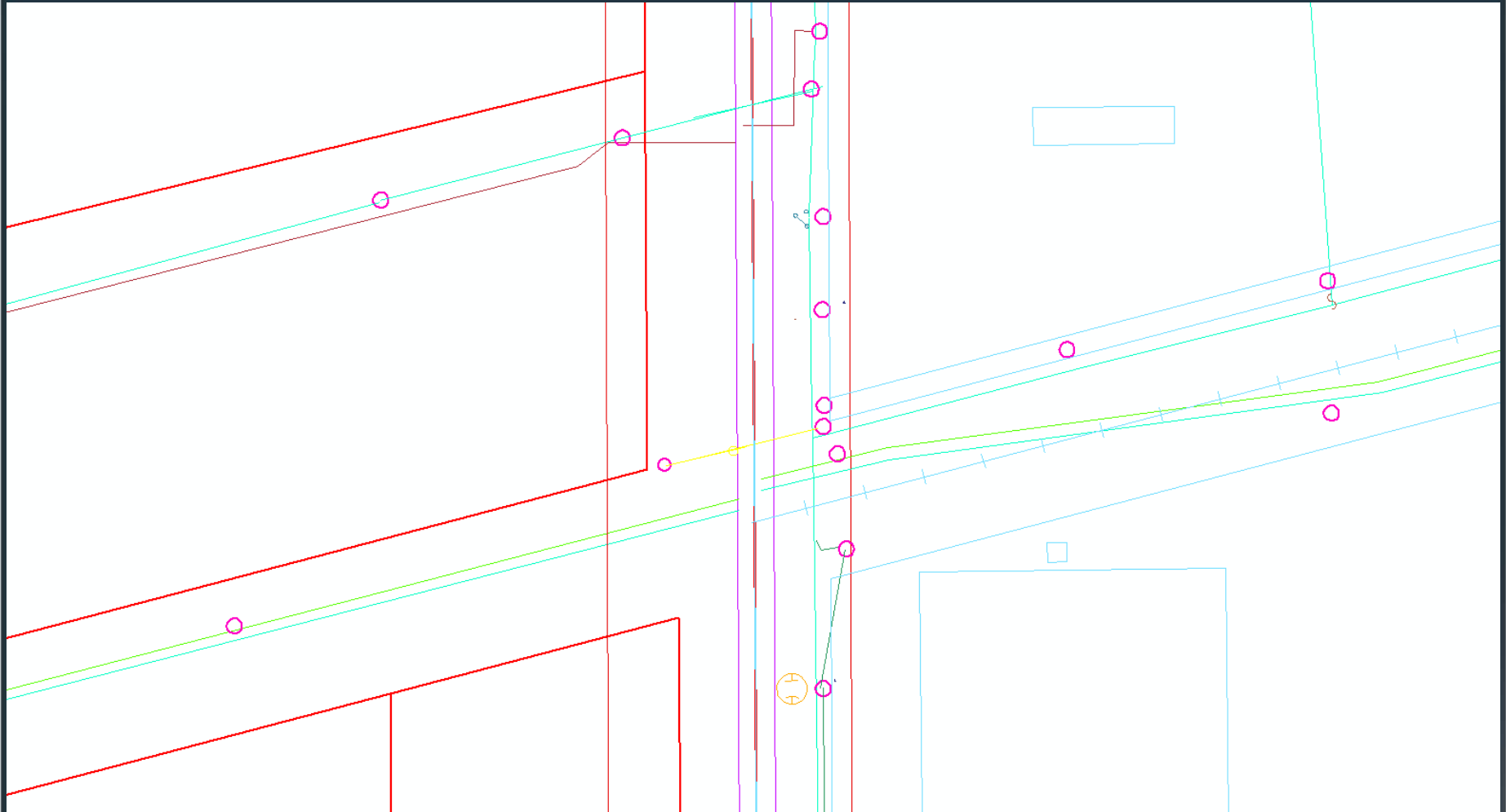
- Contracted out electronic conversion
  - CAD .dwg to ESRI file geodatabase
  - Included new schema and relational tables for room to grow





# OPU Making sense of Power Lines

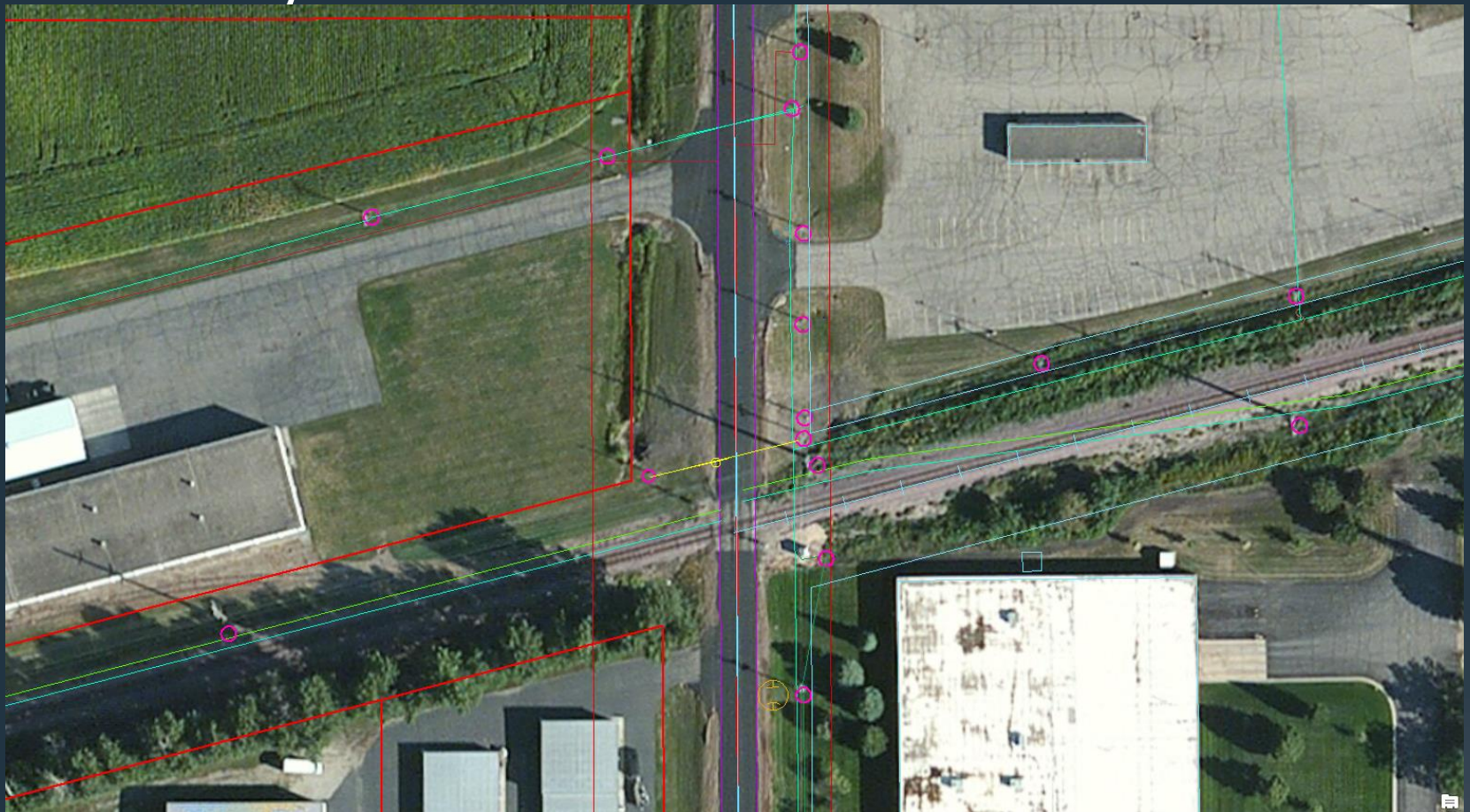
- Original CAD File





# OPU Making sense of Power Lines

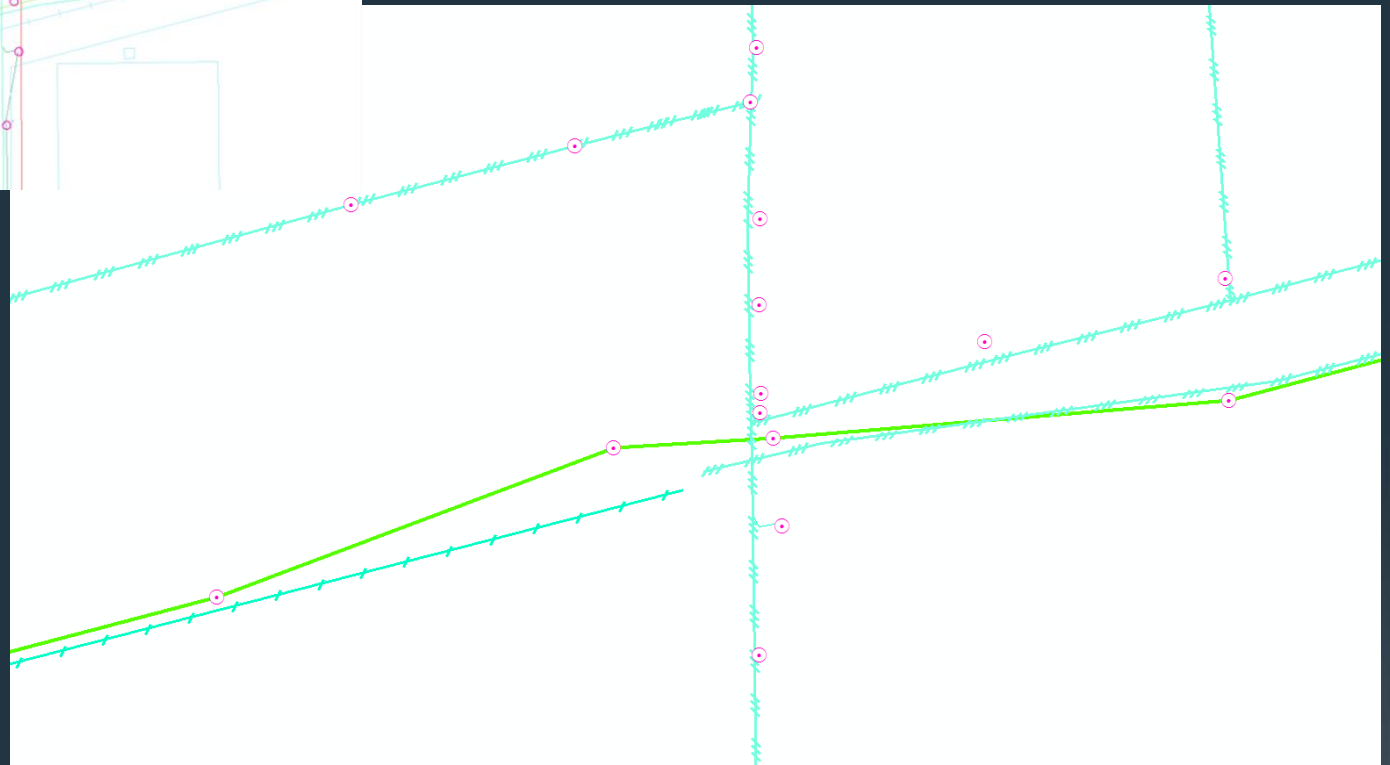
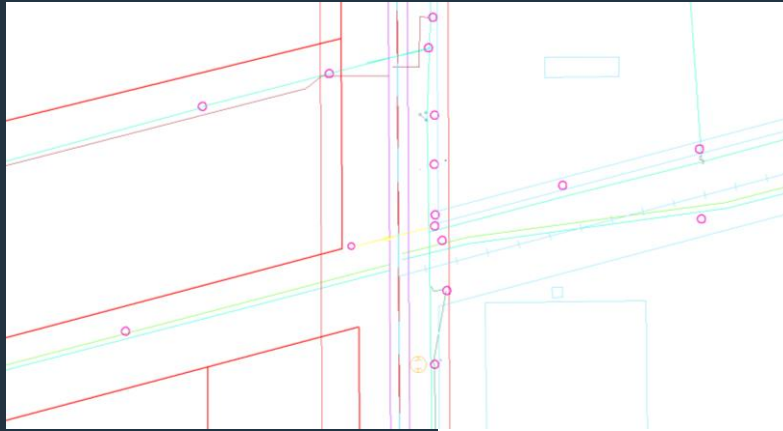
- Original CAD with Aerial distinguishes background lines from utility features.





# OPI Making sense of Power Lines

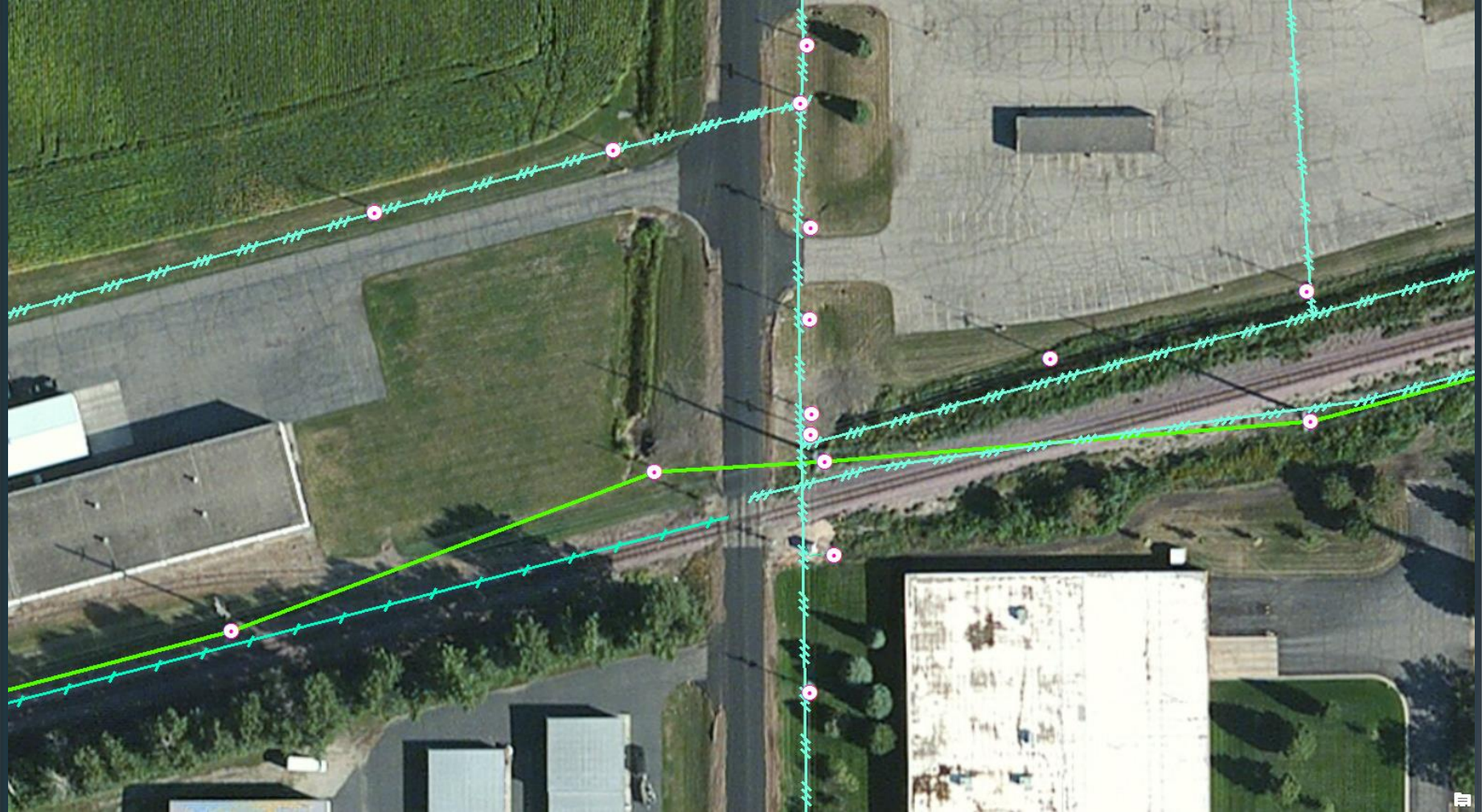
- Converted utility features to ESRI File Geodatabase





# OPU Making sense of Power Lines

- Converted ESRI File Geodatabase





# OPU Making sense of Power Lines

- Electronic conversion only took us so far
  - Little to no connectivity
    - Lines not attached to poles or attached to the wrong pole
    - Lines not continuous
  - Some lines were drawn on the wrong CAD Layer and therefore not correctly identified
  - Lack of attribute information







# OPU Making sense of Power Lines

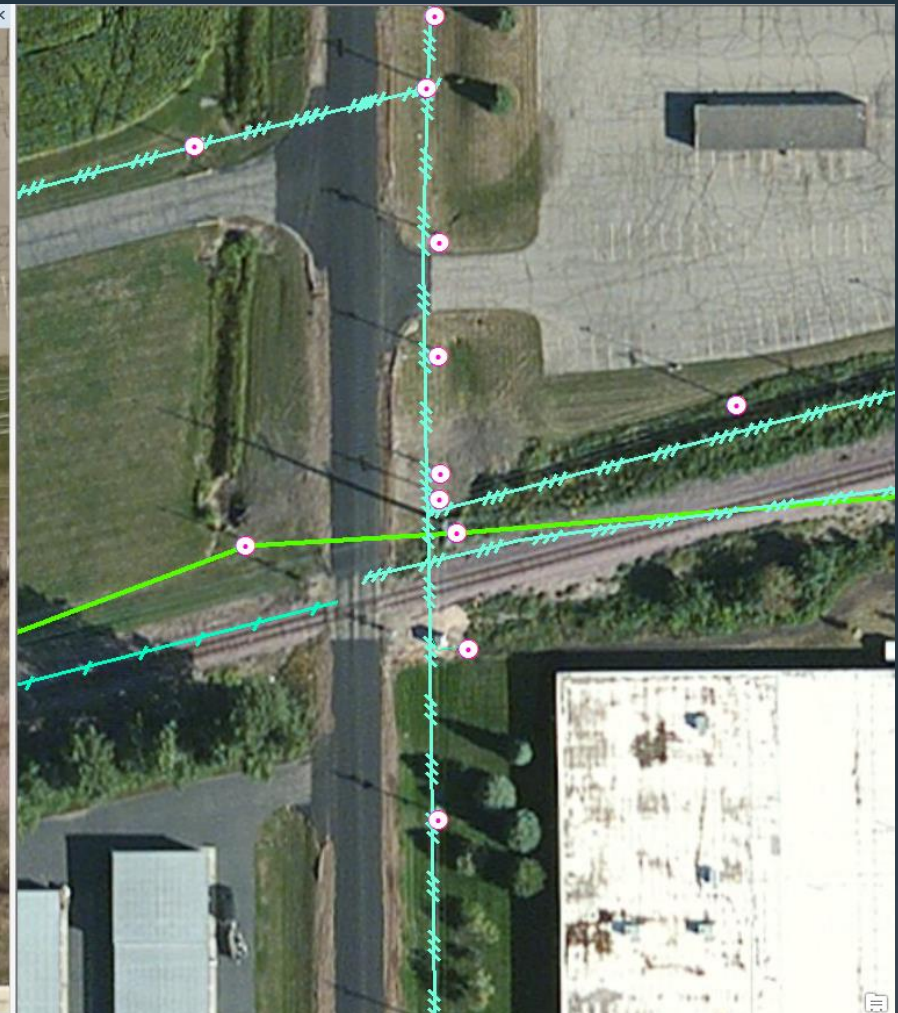
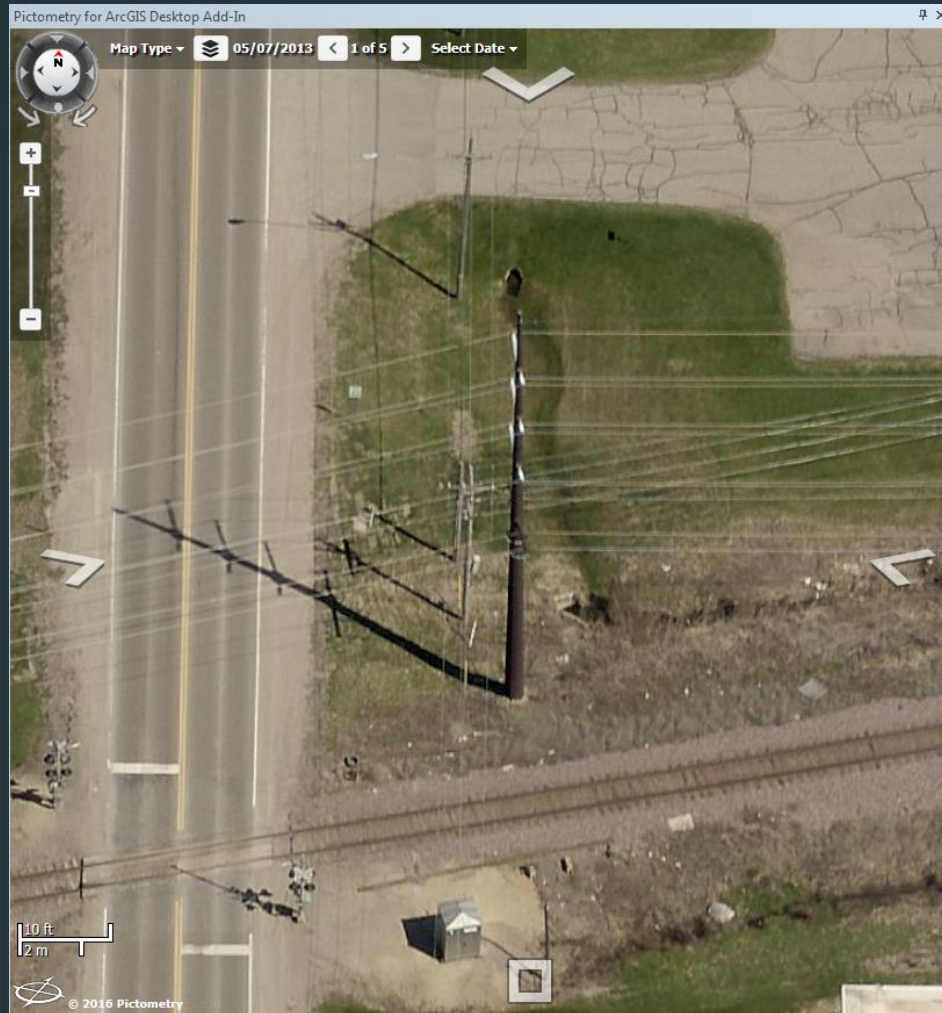
- Adjustments needed to be made
  - Field work
    - Time consuming and labor intensive
    - Cannot reach all objects for measurements
    - Hard to trace lines along large spans
  - Oblique aerial imagery
    - No field notes or in field edits to transfer
    - Less Labor intensive
    - Can take measurements of objects easily





# OPI Making sense of Power Lines

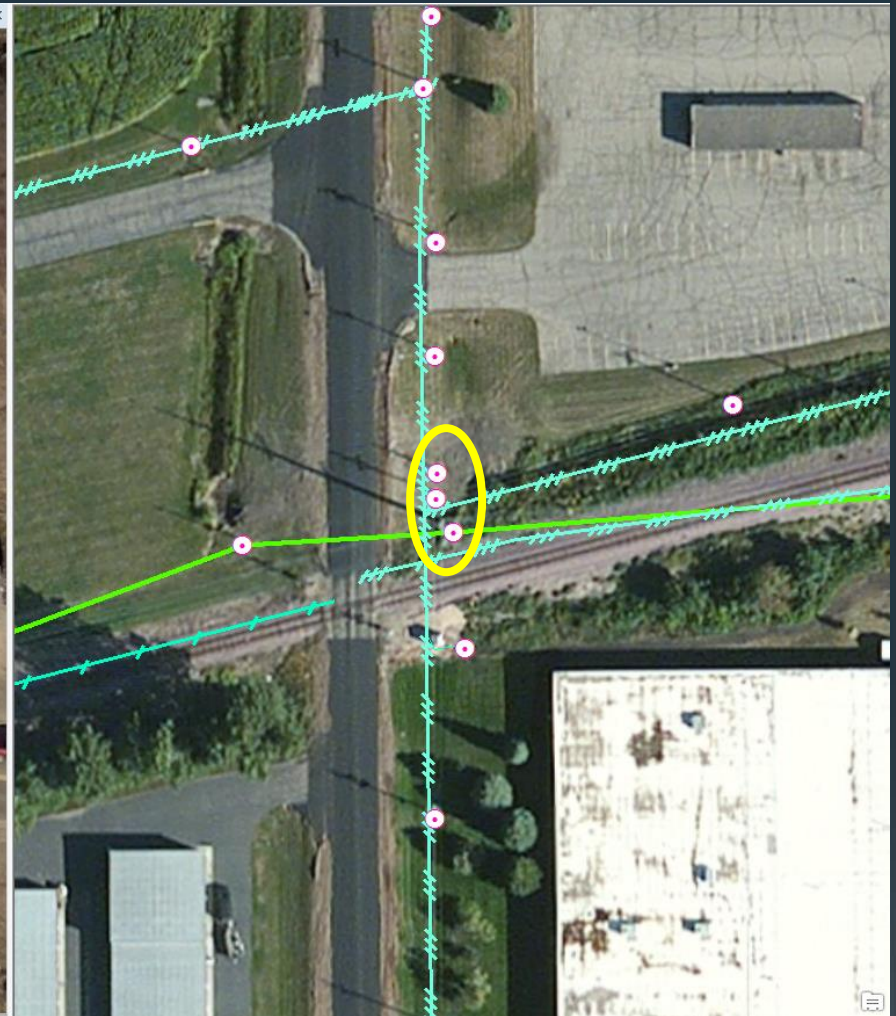
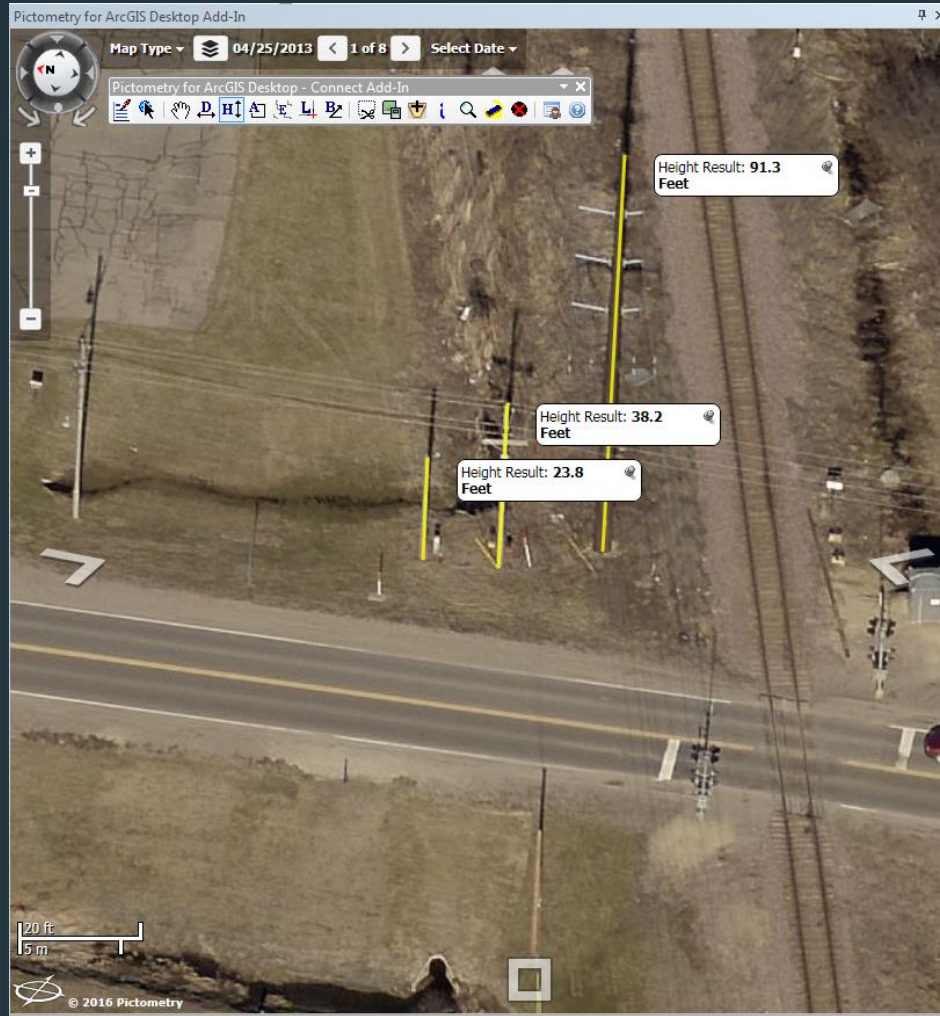
- Oblique/Aerial Imagery side by side





# OPI Making sense of Power Lines

- Measurements help to distinguish pole connections





# OPU Making sense of Power Lines

- What is on this pole?



Original CAD File



Converted Geodatabase



# OPU Making sense of Power Lines

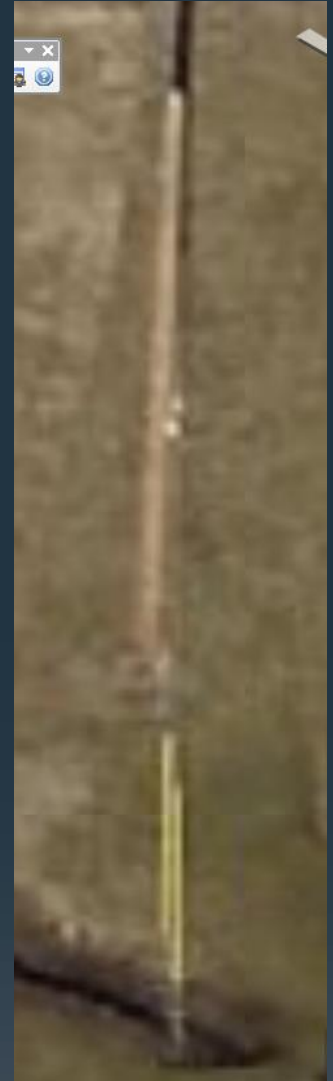
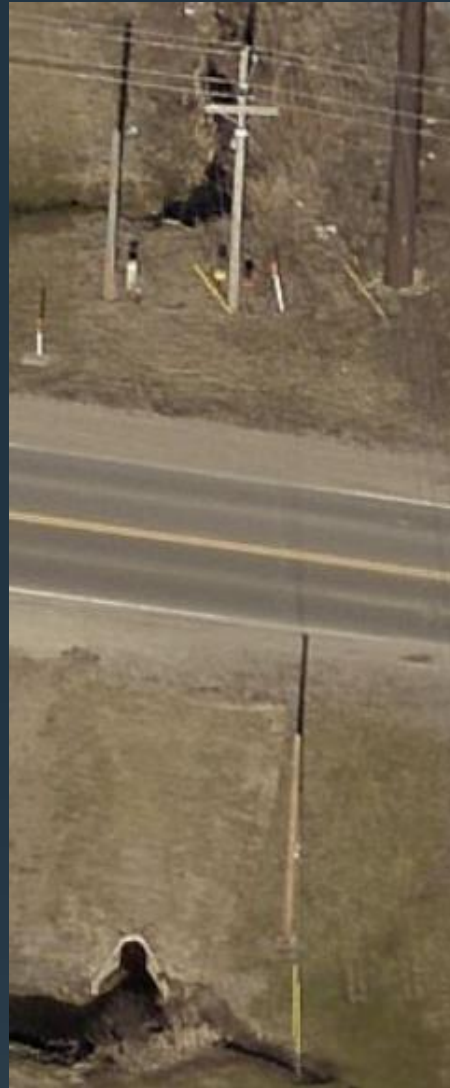
- Oblique view shows it is a much shorter pole





# OPU Making sense of Power Lines

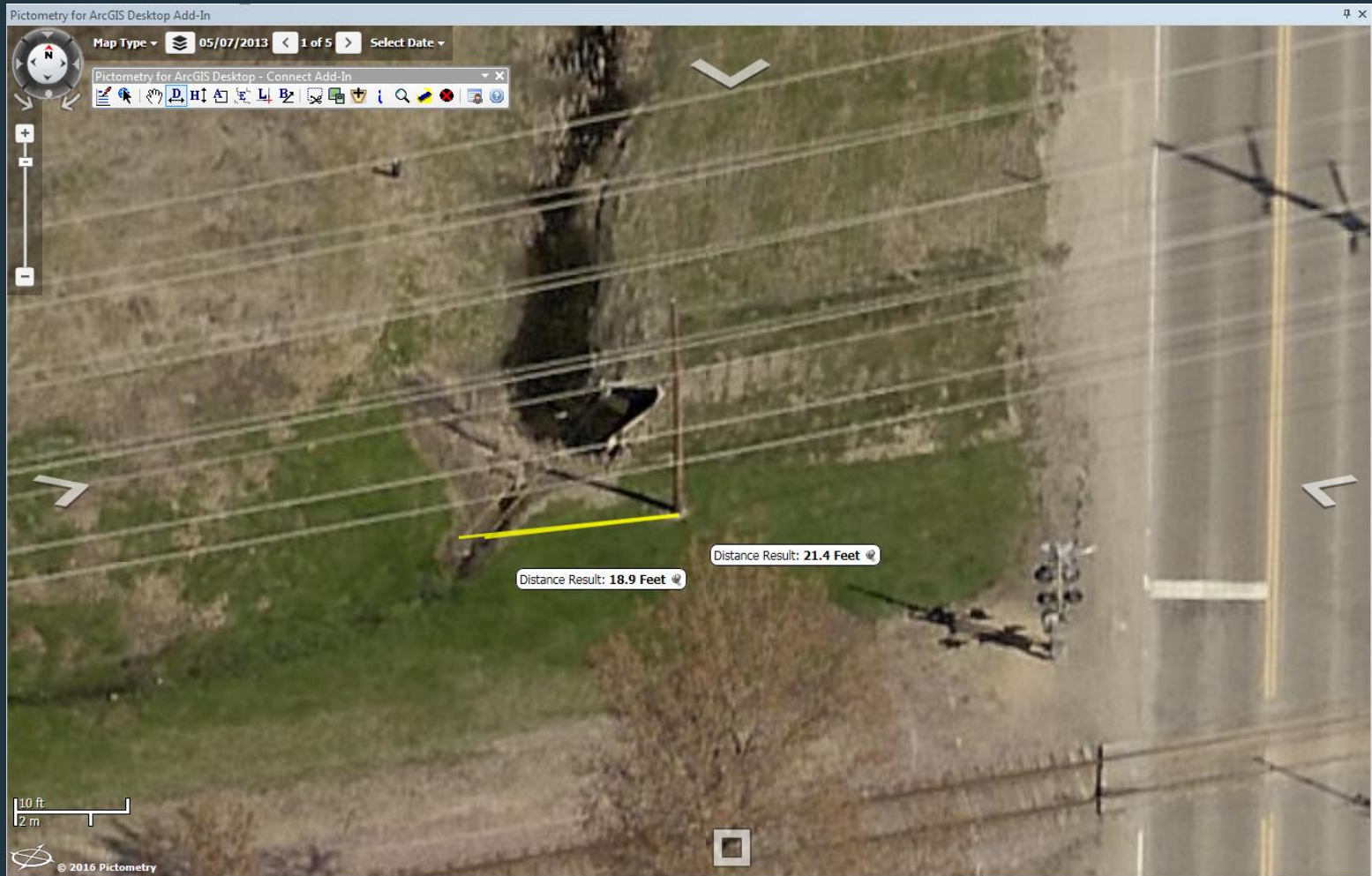
- From another angle you can see another clue





# OPU Making sense of Power Lines

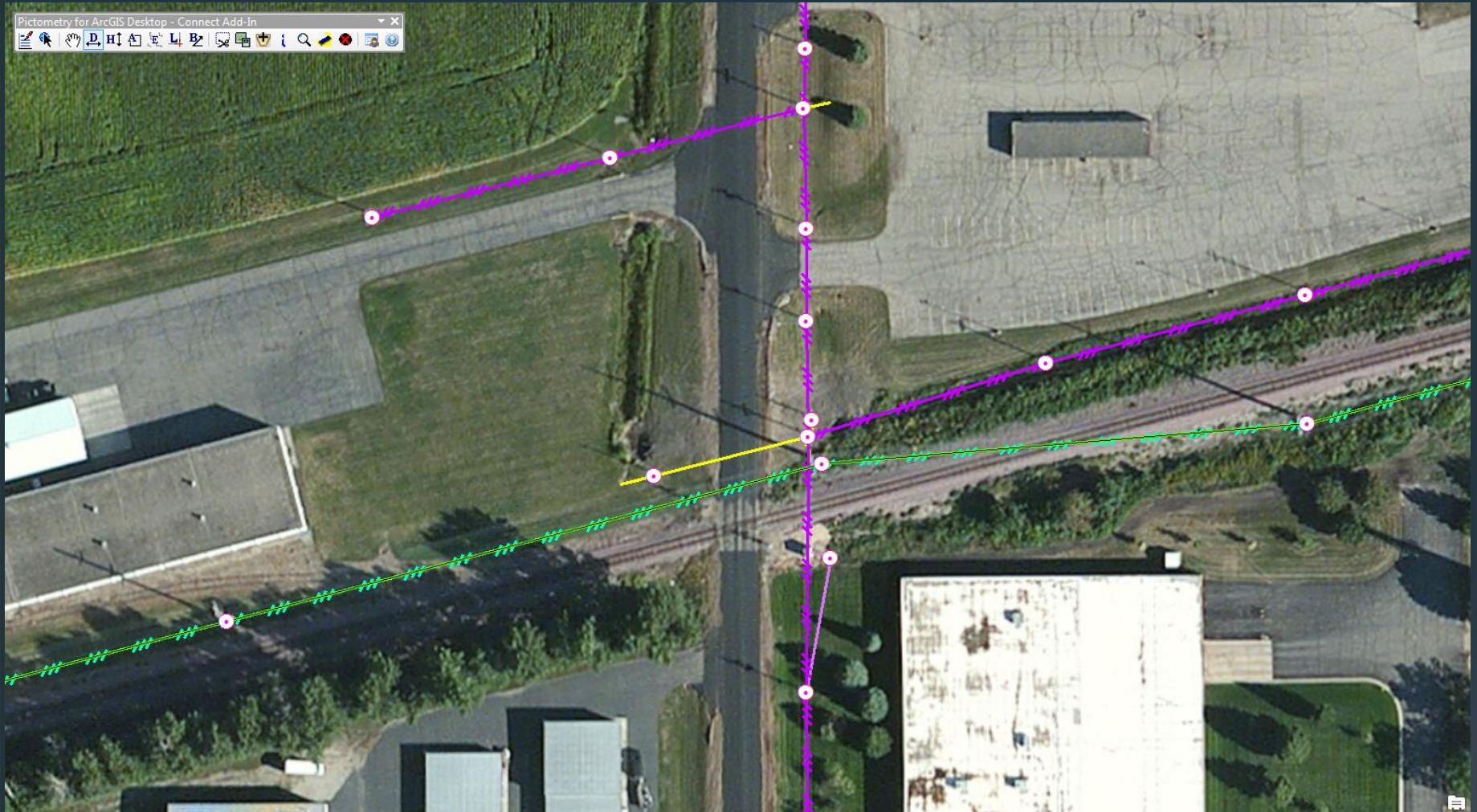
- Measure Guy wires distance from pole





# OPI Making sense of Power Lines

- Final Product







# OPU Making sense of Power Lines

- All distribution was visually adjusted with attributes added from schematics and notes
  - Some field verification will be needed
- Transmission lines were located beyond city limits using imagery
  - Oblique imagery allowed identification of poles with local distribution attachments
  - Minimal infield time
    - Many areas are difficult to access
  - Dynamic interaction between field, map, and schematic





# OPU Making sense of Power Lines

