



STAR HEADLIGHT & LANTERN CO.

VERSA STAR® LED LIGHTS



DLX3



DLX4



DLX6F

Specifications and Features

- High intensity Star Generation IV LEDs
- 25 customer selectable flash patterns, including steady-on
- S-Link System™ synchronizing capabilities with other Star LED units
- Versatile LED warning lights that are built with fully encapsulated circuitry
- Can be mounted just about anywhere, interior or exterior
- Size is the same between options, allowing for easy relocation or reconfiguration
- Includes the same snap on Black (standard), Chrome, or White bezel
- Optional mounting brackets are also available
- Reverse polarity protected and current limiting protection over the entire operating voltage
- **DLX3, DLX4, DLX6F** - designed for flush or bracket mount
- **DLX6** - incorporates a heavy duty heat sink, bracket mount only
- Dimensions: 1"H x 3 5/8"W x 3/4"D (**DLX3, DLX4, DLX6F**), 1"H x 3 5/8"W x 1 5/8"D (**DLX6**)
- Voltage: **DLX3** - 10-16V DC, **DLX4, DLX6, DLX6F** - 10-30V DC
- Amp draw: **DLX3** - .29 amps, **DLX4** - 0.7 amps @ 12V, 0.3 amps @ 24V, **DLX6** - 0.9 amps @ 12V, 0.5 amps @ 24V DC, **DLX6F** - 0.9 amps
- Color combinations: **DLX3** - single colors only, **DLX4, DLX6** - single or split color
 -
- Approvals
 - DLX3** - SAE Class II (Amber/White), SAE Class I (Blue/Red)
 - DLX3H-A** - SAE Class I, CA Title 13 - Amber only
 - DLX4** - SAE Class I (Amber, White, Blue, Red) CA Title 13 (Blue/Red)
 - DLX6, DLX6F** - SAE Class I, CA Title 13 SAE Class I available where applicable

Model Numbers/Descriptions:

DLX3	Three array LED head with Black bezel
DLX3H-A	Three array high power LED head with Black bezel (only Amber)
DLX4	Four array LED head with Black bezel
DLX4C	Four array LED head with Chrome bezel
DLX6	Six array LED head with Black bezel
DLX6C	Six array LED head with Chrome bezel
DLX6F	Six array LED head with Black bezel, flush mount

SF120 Rev E 2-19-2016



Star Headlight & Lantern Co., Inc.
 455 Rochester Street
 Avon, NY 14414
 Phone: 585-226-9500
 Fax: 888-478-2797
 starheadlight.com



PROUDLY MADE IN THE U.S.A
 An ISO 9001:2008 Certified Company



STAR HEADLIGHT & LANTERN CO.

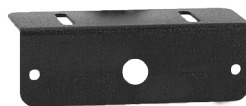
VERSAR STAR® OPTIONAL BASKETS



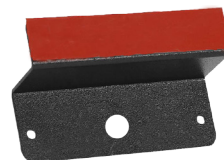
274-DLX4-6-T
Trunk mounting



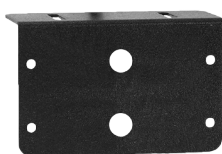
274-DLX4-6-45
45° angle mounting



274-DLX4-6-U
L-bracket for
universal mounting



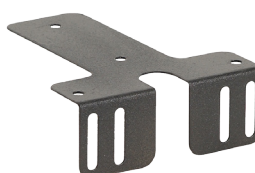
274-DLX4-6-W
Window mounting



274-DLX4-6-2X1
L-bracket for mounting two
Versa Star® vertically



274-DLX4-6-1X2
L-bracket for mounting
two Versa Star® horizontally



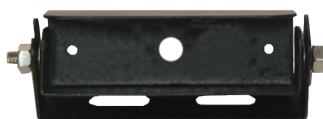
274-DLX4-6-H
Headliner bracket for
DLX4-HK, DLX4-HK2, DLX6-HK,
and DLX6-HK2 series with a
flashback hood



BB274-DLX-VC
Visor clip mounting



BB274-DLX4-6-SLP
Pickup rear window mounting



BB274-DLX6-BAIL
Bail bracket mounting



274-DLX4-6-RL
License plate mounting



BB274-DLX4-6-RHK
Pickup rear window mount
using hanger clips



BB274-DLX46LPM
Adjustable license plate mounting



Star Headlight & Lantern Co., Inc.

455 Rochester Street
Avon, NY 14414
Phone: 585-226-9500
Fax: 888-478-2797
starheadlight.com



 PROUDLY MADE IN THE U.S.A.
An ISO 9001:2008 Certified Company

