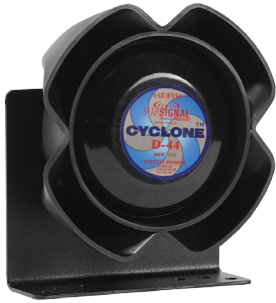


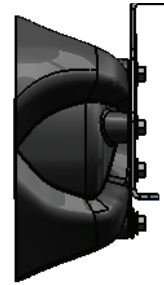


STAR HEADLIGHT & LANTERN Co.

D-44 CYCLONE™



D-44-16



Specifications and Features

- Patented Cyclonic Expansion Chambers (Patent #8,265,320 B2 & D615,443 S)
- Ultra compact design - only 3" deep
- Rugged glass filled nylon housing - will not rust!
- User replaceable rear facing driver
- Over twenty mounting bracket options available
- Input voltage: 32V RMS
- Output: 100 watts
- Impedance: 11 ohm
- Decibels: 123 db
- Dimensions: 6.6" x 6.6" x 2.9"
- Weight: 8 lbs. (with bracket)
- Meets or exceeds acoustical requirements, & environmental requirements of SAE J1849

Model Numbers/Descriptions:

D-44	Speaker only
D-44-16	Universal "L" bracket
D-44-17	Center mount bracket, '03-'11 Ford Crown Victoria
D-44-18	'07-'14 Chevrolet Suburban, '07-'14 Chevrolet Tahoe
D-44-19	'06-'13 Chevrolet Impala
D-44-20	'06-'10 Dodge Charger, '05-'08 Dodge Magnum
D-44-21	Universal two piece adjustable bracket
D-44-22L	'08-'16 Ford F250 & F350, driver side
D-44-22R	'08-'16 Ford F250 & F350, passenger side
D-44-23	'08-'17 Ford E250 & E350
D-44-24	'07-'15 Ford Expedition
D-44-27	'11-'17 Dodge Charger
D-44-28	'10-'17 Ford Taurus (Interceptor Sedan)
D-44-29	'11-'17 Ford F350
D-44-30	'11-'17 Dodge 4500
D-44-31	'11-'16 Chevrolet Caprice
D-44-32	'11-'17 dual bracket for Dodge Charger
D-44-33	'10-'15 Dodge Durango
D-44-34	'10-'17 dual bracket for Interceptor SUV
D-44-35	'15-'17 single bracket for Chevy Tahoe and Suburban
D-44-36	'15-'17 dual bracket for Chevy Tahoe and Suburban
D-44-37	'15-'17 Ford F150
D-44-FIS	'10-'17 Ford Interceptor Sedan, Direct Plug-N-Play
D-44-FISUV	'10-'17 Ford Interceptor SUV, Direct Plug-N-Play

SF022 Rev F 4-21-2017

STAR
WARNING
SYSTEMS®

STAR SIGNAL
VEHICLE PRODUCTS®

Star Headlight & Lantern Co., Inc.

455 Rochester Street
Avon, NY 14414

Phone: 585-226-9500

Fax: 888-478-2797

starheadlight.com



BRADFORD™
Vehicle Solutions Inc.



PROUDLY MADE IN THE U.S.A.
An ISO 9001:2008 Certified Company