

DONE

design and print

Material Guide



508-444-9950 DigitalOfNE.com

TABLE OF CONTENTS

Floor Graphics	1	Backlit Banners.....	11
Alumigraphics	1	Ultra Clear	12
Banner Stands	2	Double-Sided Window	
Pole Banners.....	3	Graphics.....	12
Black Mesh	4	Frosted Adhesive.....	12
Speaker Mesh	4	Cling Perfect	13
Hi-Def Mesh	5	Window Perf.....	13
Standard Mesh	5	3M LX480c.....	14
Fabric Mesh	5	Indoor Low-Tac Wall	14
Truckside.....	6	PSA Wallpaper.....	14
Standard Banner	6	Wallpaper	15
3M IJ180C	7	Magnetic Receptive.....	15
3M IJ40C.....	7	Styrene.....	16
3M IJ35C	7	Foamboard	16
Heavy Knit	8	Acrylic	16
Soft Knit.....	8	Coroplast.....	17
Canvas	9	PVC.....	17
Fabric Flag	9	ACM	17
Gaming Suede	9	Hardware & Accessories.....	18
Backlit Films	10	Quick Reference Guide.....	19

FLOOR GRAPHICS

Material:

Indoor Floor Graphics

Common Uses:

Indoor, Smooth Floors,
Promotional, Advertising,
Directional, Trade Shows,
Retail, Offices,
Events

Roll Size: 54"

Options/Features:

Trimmed,
Cut Contour,
Slip Resistant,
No Laminate
Required



ALUMIGRAPHICS

Material:

Alumigraphics

Common Uses:

Outdoor, Concrete, Sidewalks, Walls,
Promotional, Directional, Events

Roll Size: 53"

Options/Features: Trimmed,
Simple Contours, Slip Resistant,
No Laminate Required



BANNER STANDS

Cumberland

Material: Banner Indoor D/S Smooth

Common uses: Trade Shows, Sales Promotions, Events

Graphic Size: 78.75"H x 33.5"W

Options: Single-Sided, Silver Base, Block-Out, 12oz, FR



Simon

Material: Banner Indoor D/S Smooth

Common uses: Trade Shows, Sales Promotions, Events

Graphic Size: 78.75"H x 33.5"W

Options: Single-Sided, Double-Sided, Silver Base, Block-Out, 12oz, FR



POLE BANNERS



18oz Pole Banner



13 oz D/S Mesh Banner

Material: Banner 18oz Double-Sided

Common Uses: Over-the-street, Pole/Boulevard Banners

Roll Sizes: 54", 80"

Options: Sewn Hems, Pockets, Webbing, Grommets, Wind Slits, D-Rings, Rope, FR

Material: Mesh 13oz Double-Sided 60/40

Common Uses: Over-the-street, Pole/Boulevard Banners

Roll Sizes: 63", 126"

Options: Sewn Hems, Pockets, Webbing, Grommets, D-Rings, Rope, FR

Outdoor Fabric

Material: Dye-Sub Pole Banner Canvas 8oz

Common Uses: Pole/Boulevard Banners

Roll Size: 60"

Options: Sewn Hems, Pockets, Webbing, Grommets, Block-out Liner



BLACK MESH

Material: Mesh Black,
Mesh White-Black 65/35

Common Uses: Fences, Barricades

Roll Sizes: 126", 196"

Options: Heat Welded Hems, Pockets,
Webbing, Grommets, D-Rings, Rope, FR



SPEAKER MESH

Material: Mesh Speaker

Common Uses: Concert
Speaker Wraps, Stage
Trusses, Events

Roll Size: 196"

Options: Heat Welded
Hems, Pockets, Webbing,
Grommets, D-Rings,
30/70, FR



HI-DEF MESH

Material:

Banner Mesh
Hi-Def

Common Uses:

Building Wraps, Fences,
Events, Close-Viewing

Roll Size: 196"

Options:

Heat Welded Hems,
Pockets, Webbing,
Grommets, D-Rings,
9oz, 80/20, FR



STANDARD MESH

Material: Mesh Standard 8oz

Common Uses: Building Wraps, Fences,
Construction, Events

Roll Size: 196"

Options: Heat Welded Hems, Pockets,
Webbing, Grommets, 65/35, FR

FABRIC MESH

Material: Polyester, Knitted

Common Uses: Fences, Construction,
Events

Roll Size: 126"

Options: Sewn Hems, Pockets, Webbing,
Grommets, 50/50, FR



TRUCKSIDE

Material: Tarpaulin 20oz,
Tarpaulin 27oz

Common Uses: Trailer Wraps, Covers,
Side Curtains, Mobile Billboards

Roll Size: 126"

Options: Heat Welded Hems,
Pockets, Webbing, Grommets,
Clear Coat, Keder



STANDARD BANNER

Material: Banner Standard 12oz

Common Uses: Indoor/Outdoor,
Events, Promotions, Retail, Schools

Roll Size: 196"

Options: Heat Welded Hems,
Pockets, Webbing, Grommets,
Wind Slits, Rope, Keder

3M™ IJ180c



3M™ MCS™ Warranty

Specifications: 2 mil adhesive vinyl with 3M™ Controltac™ and Comply™ Air-Release

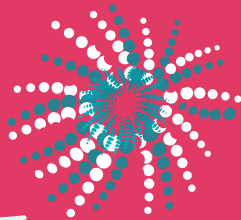
Common Uses: Cars, Vans, Trailers, Walls

Application Surfaces: Compound Curves, Corrugations, Flat, Flat with Rivets, Simple Curves

Options: Gloss and Matte Laminates, Weeding, Masking, Contour Cut



Coral
Forest



BEAUTY CLINIC



3M™ IJ40c

Specifications: 3 mil adhesive vinyl with 3M™ Controltac™ and Comply™ Air-Release

Common Uses: Cars, Vans, Trailers, Walls, Floors, Windows, Glass

Application Surfaces: Flat, Simple Curves

Options: Gloss and Matte Laminates, Weeding, Masking, Contour Cut

3M™ IJ35c

Specifications: 3.2 mil adhesive vinyl with 3M™ Comply™ Air-Release, Permanent aggressive adhesive

Common Uses: Buildings, Walls, Displays, Labels

Application Surfaces: Flat, Simple Curves

Options: Gloss and Matte Laminates, Weeding, Masking, Contour Cut



RECYCLE



PAPER
ONLY

HEAVY KNIT

Material:

Dye-Sub Heavy Knit
(8.56 oz)

Common Uses:

Backdrops,
Table Cloths,
Events,
Trade Shows

Roll Size: 120"

Options:

Sewn Hems,
Pockets, Webbing,
Grommets, SEG,
Velcro, FR



SOFT KNIT

Material:

Dye-Sub Soft Knit
(5.1 oz)

Common Uses:

Backdrops,
Table Cloths,
Events, Trade
Shows

Roll Size: 120"

Options: Sewn
Hems, Pockets,
Webbing,
Grommets,
SEG, Velcro, FR





CANVAS

Material: Art Canvas

Common Uses: Stretcher Bars, Artwork, Portraits

Roll Size: 53"

Options: Trimmed

FLAG

Material:
Dye-Sub Flag

Common Uses:
Single-Sided or Double-Sided Flags, Rectangle, Feather, Sail, Wind, Flex, Teardrop, Golf

Roll Size: 126"

Options:
Sewn Hems, Pockets, Webbing, Grommets, Flag Liner, FR



GAMING SUEDE





Material:
Dye-Sub Gaming Suede

Common Uses: Pool Tables, Card Tables, Casino Games

Roll Size: 67"

Options: Trimmed

BACKLIT FILMS

BURGERS	 <p>BIG BURGERS</p> <p>TRY OUR NEW PIMENTO POWER BURGER</p>  <p>...SO CHEESY</p> <p>LIMITED TIME ONLY!</p>	SIDES
<p>ORIGINAL BIG BURGER \$8</p> <hr/> <p>VEGHEAD BIG BURGER \$6</p> <hr/> <p>SPICY BIG BURGER \$8</p>		<p> FRIES \$2</p> <hr/> <p>ONION RINGS \$3</p> <hr/> <p>TOTS \$2</p>
HOT DOGS		DRINKS
<p>1 FOOT BIG DOG \$4</p> <hr/> <p>6 INCH BIG DOG \$3</p>	<p> SMALL \$1</p> <hr/> <p>MED \$1.25</p> <hr/> <p>LARGE \$1.50</p>	

Non-Adhesive

Material:
Backlit Polyester Film

Common Uses:
Airports, Retail, Menu Boards, Outdoor Cabinet Inserts

Roll Size: 54"

Options:
Trimmed, Double-Strike, Color/White/Color, Gloss Laminate

Adhesive

Material:
Backlit Translucent Adhesive

Common Uses:
Airports, Retail, Menu Boards, Applied to Acrylic

Roll Size: 60"

Options:
Trimmed, Double-Strike, Color/White/Color, Gloss Laminate

DIRECTORY

 SARAHS	 MARTINI BAR
 PHONE REPAIR	 PHOTO BOOTH
 LUGGAGE DEAL	 MICYS
 LOTS OF BOOKS	 SEAWEED SWIMWEAR
 GREEN WORKS	 AUSTIN SPORTS
 THREE SCOOPS	 THE PEER
 JACK'S SEAFOOD	 DAISY'S PET STORE

 **You are Here**

BACKLIT BANNERS

Fabric

Material:

Dye-Sub Backlit

Common Uses:

Trade Shows, Events,
Airports, Retail

Roll Size: 124"

Options:

SEG, FR



Vinyl

Material:

Backlit Banner 20oz

Common Uses:

Pylon Signs, Storefronts,
Outdoor Lit Cabinets

Roll Size: 196"

Options:

Trimmed, Double-Strike,
Color/White/Color, 3M 8518
Wet Laminate application



ULTRA CLEAR

Material:

Optically Clear Adhesive

Common Uses: Doors,
Windows, Retail,
Restaurants, Architectural

Roll Size: 54"

Options: Trimmed,
Gloss Laminate

Double -Sided

WINDOW

Material:

Graphics

Double-Sided
Window Graphics

Common Uses: Doors,
Windows, Retail, Restaurants,
Short-Term Promotions

Roll Size: 54"

Options: Trimmed,
Basic Shapes

Frosted

ADHESIVE

Material:

Frosted Adhesive

Common Uses: Doors,
Windows, Office Spaces,
Architectural, Decor

Roll Size: 54"

Options: Trimmed,
Contour-Cut, Kiss-Cut,
Weed, Mask,
No Lamination



CLING PERFECT



Material:

Cling Perfect Clear
Cling Perfect White

Common Uses:

Doors, Windows,
Office Spaces, Restaurants,
Promotional, Alternative to
Static-Cling (micro-suction
film)

Roll Size: 54"

Options:

Trimmed, Contour-Cut

WINDOW PERF

Material:

Perforated Vinyl 65/35

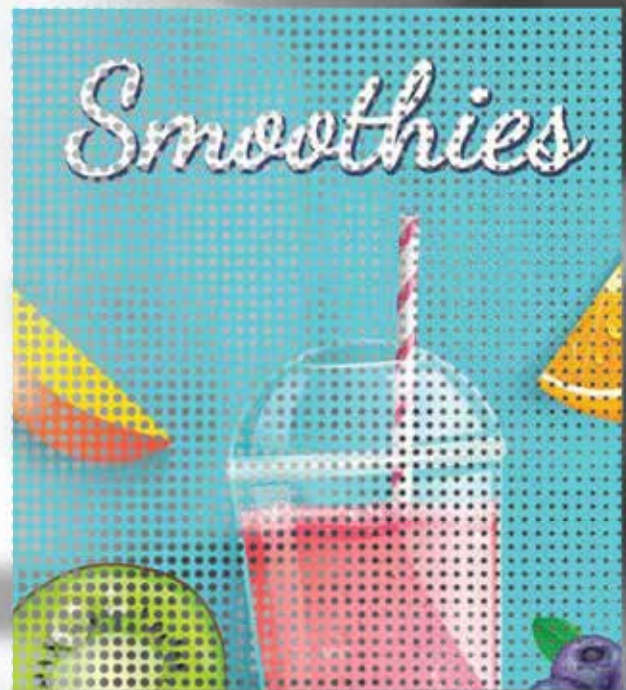
Common Uses:

Windows,
Architectural,
Storefronts,
Not for Vehicles

Roll Size: 54"

Options:

Trimmed, Optically
Clear Gloss Laminate



3M™ LX480mC

Specifications: 2 mil adhesive vinyl with 3M™ Controltac™ and Comply™ Air-Release

Common Uses: Textured and Smooth Walls, Cars, Vans, Trailers, Schools, Retail, Architectural

Application Surfaces:
Compound Curves, Corrugations,
Flat, Flat with Rivets, Simple Curves

Roll Size: 54"

Options: Gloss and Matte Laminates,
Weeding, Masking, Contour Cut



3M™ MCS™ Warranty

INDOOR LOW-TAC WALL



Material: Wall Graphic
Low-Tac PSA

Common Uses: Indoor
Walls, Doors, Counters,
Point-Of-Purchase,
Promotions, Events

Roll Size: 54"

Options/Features: Trimmed,
Contour Cut, Removable,
Re-positionable

PSA WALLPAPER

Material: Wallpaper PSA 14.5oz

Common Uses: Indoor Walls,
Floors, Medium Term Applications

Roll Size: 54"

Options/Features: Trimmed,
Re-positionable, Tear and Stretch
Resistant



WALLPAPER

Material:

Wallpaper 20oz Type II

Common Uses:

Indoor Walls, Retail,
Office Spaces,
Churches, Schools,
Architectural, Decor

Roll Size: 54"

Options:

Trimmed



MAGNETIC RECEPTIVE

Material: Magnet 30mil

Common Uses:

Walls,
Menu Boards,
Directories, Point-of-Purchase,
Vehicles

Roll Size: 48"

Options: Trimmed, Simple Contours

Material: Magnetic Receptive 12mil

Common Uses:

Walls, Menu Boards,
Directories, Point-of-Purchase,
Trade Shows, Architectural, Decor

Roll Size: 48"

Options: Trimmed





STYRENE

Material:

Styrene .020 Dead White
Styrene .040 Dead White

Common Uses: Indoor, Menu Boards, Point-of-Purchase, Posters

Sheet Size: 50"x99"

Options: Trimmed, Contour Cut, Single-Sided, Double-Sided, Laminate

FOAMBOARD

Material:

Foamboard 3/16" Clay-Paper Coated
Foamboard 3/16" Styrene Coated

Common Uses: Events, Trade Shows, Point-of-Purchase, Directional, Displays

Sheet Size: 48"x96"

Options: Trimmed, Simple Contours, Clay Coated (Indoor Economy), Styrene Coated (Indoor/Outdoor Premium), Laminate

Welcome!



Pet Care
Conference

BRIGHT BEACH
ART STUDIO

ACRYLIC

Material:

Acrylic 3/16"

Common Uses: Directional, Displays, Point-of-Purchase

Sheet Size: 48"x96"

Options: Trimmed, Simple Contours, Clear, White, White Ink (Spot/Fill), Standoffs

COROPLAST

Material:

Coroplast 4mm

Common Uses: Yard Signs, Services, Events, Political

Sheet Size: 48"x96"

Options: Trimmed, Cut Contour, Single-Sided, Doubled-Sided, H-Stakes



PVC

Material:

PVC 3mm

PVC 6mm

Common Uses: Events, Trade Shows, Point-of-Purchase, Directional, Displays, Dimensional, Lamination

Sheet Size: 48"x96"

Options: Trimmed, Simple Contours



ACM

Material:

Aluminum Polymetal 3mm

Aluminum Polymetal 6mm

Common Uses: Indoor/Outdoor, Point-of-Purchase, Directional, Displays, Architectural, Office

Sheet Size: 48"x96"

Options: Trimmed, Simple Contours, Lamination, Holes



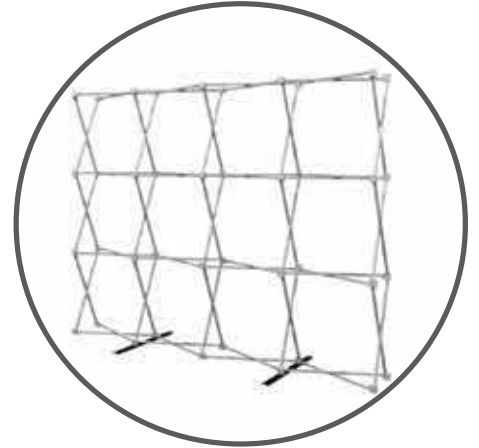
HARDWARE & ACCESSORIES



|| Tents ||



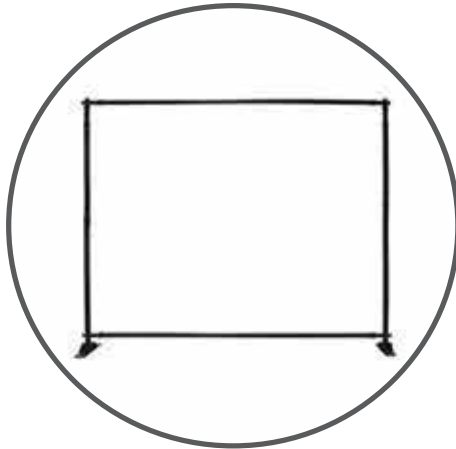
|| SEG Frames ||



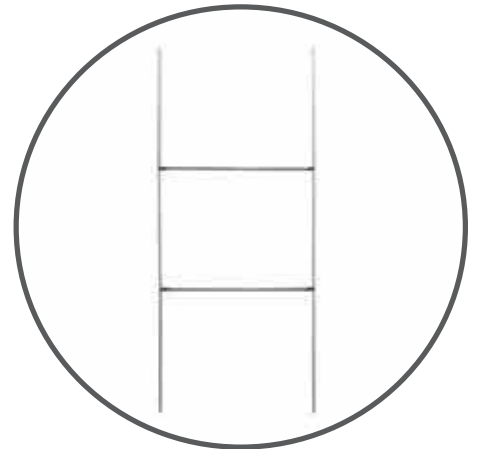
|| Pop-Up Frames ||



|| Tube Frames & Displays ||



|| Slider Stands ||



|| H-Stakes ||



|| Hand Applicator Squeegee ||



|| Stand-Offs ||



|| Banner Brackets ||

QUICK REFERENCE GUIDE

CMYK (Cyan, Magenta, Yellow, Black) vs RGB (Red, Green, Blue) – CMYK is a subtractive color space that uses black to add depth of color for printed products. RGB is an additive color space that is used for digital media. There is a conversion that must take place that will change the colors from how they are perceived on a monitor versus how they are displayed after printing.

Pantone Matching System (PMS) Colors – PMS colors are a standard of colors that helps printers and designers identify and match specific colors. A PMS color will print different than a corresponding CMYK because of where the color is assigned in the LAB space by the RIP.

RIP – A Rip converts a digital image to an output printers can use.

LAB Values – LAB is a three-dimensional color space that helps ensure more reliable color accuracy by placing a color more accurately inside of the printer's color gamut.

Scrim vs Weight – Banners are made with a polyester scrim coated in vinyl. The weight of the banner comes from the amount of vinyl, but the strength of the banner is from the scrim and weave.

Flame Retardant (FR) – Products are given a fire certification based on the length of time they are able to resist a flame, length of char, and not continuing to burn after the heat source is removed.

Heat Welded vs Sewn Hems – Banners can be heat welded by applying a lot of heat to the material and melting the vinyl to itself. Double-Sided and fabric banners must be sewn around the edge.

Grommets – These eyelets can be brass, silver, or black. They are primarily used to secure a banner for installation. It is very important to use all the grommets and keep them secure to maximize the life of a banner.

Webbing – Webbing is a nylon material that is used to reinforce the hem of a banner. The webbing gives the grommet more to bite into than just vinyl. This is important for large banners or where wind is a concern.

D-Rings – D-Rings are sewn into webbing and stick out of the corners of some large banners. This allows for the wind stress on a banner to be better dispersed throughout the banner instead of focusing on the corners. They are most often used for over-the-street banners.

Pocket Sizes – Pockets should be at least double the diameter of whatever is going through it.

Wind-Slits – Wind-slits are halfmoon shaped cuts into a banner that allow for wind to pass through. Mesh is often a better alternative to wind-slits as the banner material is immediately compromised by cutting the product.

Blow through – Blow through is a term used with Mesh to determine how much air can pass through the banner. For instance, a 65/35 Mesh will be 65% material and 35% blow through.

Keder – Keder is a popular tension and track system for banners. A Keder Cord is hemmed to the edge of the banner that is able to slide into an aluminum rail.

Cast vs Calendered Adhesive Vinyl – Cast films are created by pouring a liquid into a mold. They are thinner than calendered, and they are able to more easily stretch and conform to complex surfaces. Calendered films are produced by extruding through rollers to flatten the film. This will cause the product to attempt to shrink over time. These films are best used for short to intermediate applications with flat or very gentle curves.

3M Matching Component System (MCS) – 3M's MCS is a warranty and performance when finished graphics are created using all 3M Components. Installation, Removal, Ink Life are covered for a period of time based on material and application.

3M Controltac – Controltac is a 3M term that allows for repositioning adhesive graphics with a low tac before pressure is used to activate the adhesive for a finished installation.

3M Comply – Comply is 3M's air release layer for adhesive vinyl. This allows for air to be pushed out and for bubble free installation.

Contour Cut – Adhesive and Rigid products can either be cut as a rectangle or contour cut to take the shape of virtually any feature. The substrates will determine how complex of a cut can be done.

Kiss Cut – Similar to contour cut, a kiss cut goes through an adhesive vinyl and stops at the liner. The graphics will look like a sheet of stickers.

Weeding – After a graphic has been kiss cut, there is spare material left behind on the liner. Weeding is removing the excess vinyl, and only leaving behind the final graphic.

Masking – Masking is the final process of preparing a graphic for installation. After the excess material has been weeded out, a layer of masking is applied over the graphics. This keeps all of the elements in place and helps prevent stretching or distortion during installation.

Low-VOC Paints vs Graphics – Low-VOC paints have become increasingly common for walls from home to commercial spaces. These newer paints make it harder for anything to stick to them. An adhesion test is always recommended before applying any adhesive to a wall. If adhesion is an issue, there are some solutions depending on the application.

Dye-Sublimation – Dye-Sublimation is a process where ink is printed onto transfer paper. The paper goes through a large heater and the ink is converted to a gas before being absorbed by fabric. Fabrics that are printed this way have greater durability than a direct print. They are able to be washed and dried as well.

SEG (Silicone Edge Graphics) – SEG graphics have a silicon edge sewn to the back of a graphic. SEG tension systems are popular for displays because of the clean look and ease of installation and removal.

DONE
design and print

LARGE FORMAT CATALOG

www.DigitalOfNE.com

508-444-9950

jonfeder@digitalofne.com

