

Cannabis Retail Visual Solutions

US Made – Experienced Visual Team – Full-line Stand alone Signage
Competitive Pricing – Custom is our Specialty

Products by Store Area

- Entrance (pg 2)
- Showroom Floor (pg 3)
- Inside Display Case (pg 4)
- CounterTop (pg 5)
- Shelf Graphics (pg 6)
- Wall Category Headers (pg 7)
- Behind Cash Register (pg 8)
- Store Windows (pg 9)
- Shelf Risers (pg 10)
- Branded Queuing System (pg 11)



DONE
design and print



Entrance Signs

Perfex Pedestal SignFrames™

- Strong aluminum frame
- Accept 3/16" thick graphics
- Frame is 1" wide x 5/8" deep
- Ideal for double sided graphics



SF3S-SQ-X-V-S

Steel base

EasyOpen SnapFrame™ Pedestal Stands

- Aluminum front open SnapFrames ideal for thin paper graphics
- Curved upright & oval base
- Quick, secure graphic change-outs



EF1EO-H-S

Attractive curved upright

Lollipop Stands

- Unique drop-in design for graphics with pop
- Use with circular or shape cut rigid graphics
- 13" & 15" diameter standard models
- Ideal for double sided graphics



LOLPOP15-H



Showroom Floor Stands

Poster SignHolders

- Top 1/4" slot for easy graphic insertion
- Room for two 1/8" graphics and 2 lenses (optional)
- Ideal for double sided graphics
- Available 1, 2, 3 tier and optional tilting



L2328-S

Convex Poster SignHolders

- Dramatic, stylish, elegant two sided curved design
- Available 1, 2, 3 tier, or single tall stand
- Accepts .060 thick styrene graphics
- Curved graphics standout



VX2256-S

Harmony Banner Stands™

- Beautiful fabric graphics provide ambiance
- Pillowcase mounting - easy graphic changes
- Portable, new graphic ship small
- Curved or Square Tops



HMN1-S

Inside Display Case

Eclipse™ Tabletop SignHolders

- All metal construction
- Available in Satin Silver (-S), Matte Black (-B), or custom colors
- Custom sizes available, ideal for use inside display case
- Includes a non-reflective matte overlay
- Bulk packed for low cost shipping
- Models TC1 through TC7 made from solid aluminum extrusion



TC1-S CUSTOM – 2"W x 1"H



TC2-S



TC3-S

Models TC1 through TC4 made from solid aluminum extrusion.

Model	Pcs. Per	W" x H" (Insert Size)
TC1	12 per	1" x 3/4"
TC2	5 per	3-1/2" x 2"
TC3	5 per	8" x 2"
TC4	5 per	4-1/4" x 2-1/2"



Larger Models TC8 through TC11, welded construction

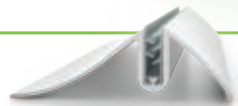
Model	Vom	W" x H" (Insert Size)
TC8	Each	11" x 8-1/2"
TC9	Each	8-1/2" x 11"
TC10	Each	14" x 11"
TC11	Each	11" x 14"



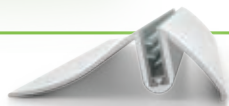
CounterTop

Arctop SignHolders™

- Available base only for 1/8" thick graphics or with lens for paper graphics
- Optional Upright (-U) or Angled (-A) graphic orientation
- Bases are 4" deep
- Aluminum alloy bases



Upright (-U)



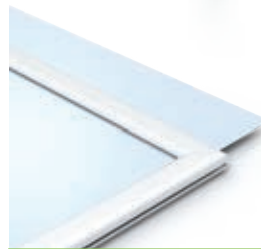
Angled (-A)

CounterTop Perfex™ Frames

- Top load for 3/16" thick graphics
- 6-3/4" round base & 4" riser
- Ideal for double sided graphics



PX1-T-V-S



Wireform Fabric Pillowcase Stands

- Offered in 2 popular sizes - 11"W x 17"H and 14"W x 22"H
- Use dye sublimated fabric - graphics on these economical stands
- All metal with welded construction is built to last
- Fully assembled, high end counter top



WDPC1117-B



Shelf Edge Graphics

Metal Shelf Talkers | Side load

- Accommodates 1/16" thick graphics
- Slim 3/16" border top and bottom
- Bulk packed, durable metal construction
- Matte black, 4" deep return

Metal Shelf Talkers | Top load

- Accommodates 5/16" graphics or multiple thin graphics
- Full metal frame on four sides
- Matte black, 4" deep return

Paper/Card Stock SignBack Mounts

- Size & orientation choices
- Accepts paper & card stock up to 1/16" thick
- 3 sided mini channel, simply slide signage in
- Bracket in rear 1 1/4" ID to hang on bin



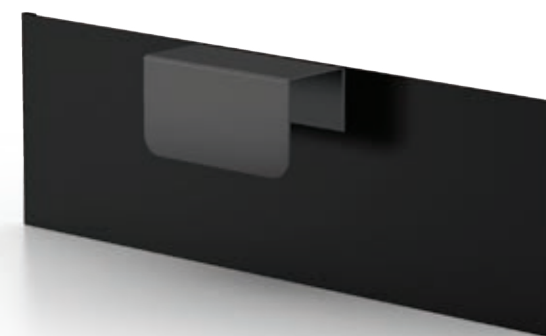
KRE2-B



KRS2-B



SBH1-B



Wall Category Headers

Floating StandOff Mounts

- Strong lightweight frame system to float rigid graphics off wall, stand off with 1" gap
- Each frame includes 1x French cleat 3" narrower than the width of the frame
- Available as complete frames kits (without graphic), or for purchase as components

OAT-S | 22" X 8"



Charisma Mini SEG™

- Frameless graphics keep focus on message
- Fabric graphics provide luxurious look and feel
- Thin 5/8" profile is attractive
- Easy to re-brand and re-organize

XMIN-S | 22" X 8"



Perfex Hanging SignFrames™

- Choice of Curvilinear, Rectilinear and Mini Frame Profiles
- Standard Satin Silver & Matte Black, custom colors available
- Side loading - for 3/16" thick graphics
- Ships assembled, includes 2 universal hanging clips and 2 top and bottom wall hangers



PX-S
22" X 8"

Behind Cash Register

EasyOpen SnapFrames™

- Aluminum Snap Frames, 1-1/4" wide, 9/16" deep
- Spring loaded sides for easy graphic insertion
- Rigid styrene backing
- Available in Satin Silver Aluminum or Matte Black



ME-S
108" X 72"



Charisma Mini SEG™

- Frameless graphics keep focus on message
- Fabric graphics provide luxurious look and feel
- Thin 5/8" profile is attractive
- Easy to re-brand and update message



XMIN-S
108" X 72"



Charisma SEG/LED Slim Profile Light Boxes™

- Beautiful fabric graphics POP with LED illumination
- 3-1/8" deep, SEG channel on front for graphics and on back for reflective backer
- Power cord - Single power cord directly from the lightbox
- Unassembled for low cost shipping, UL certified



XSL-S | SLIM
108" X 72"



Store Window Graphics

Plastic Grippers – Simple & Economical

- Sold in pairs for top and bottom plus attachments
- No pockets or graphic end treatment required
- Includes 2 universal hanging clips
- Use inexpensive posters



GC36-S

Aluminum Case Snapgraphics™ Grippers

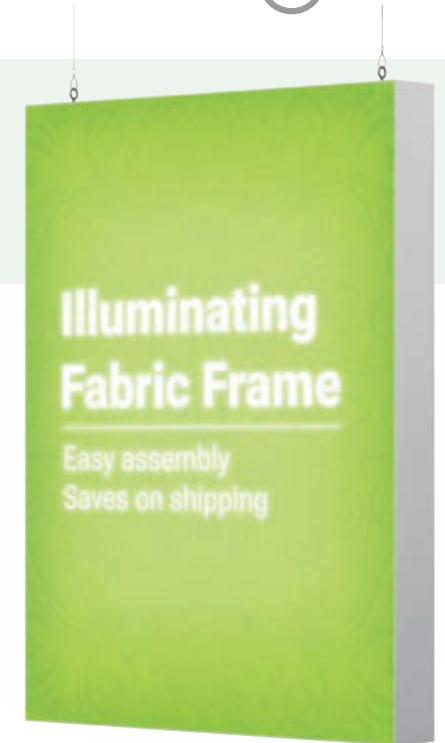
- Beautifully finished aluminum case
- Designed to close easily once graphic is inserted
- Re-usable as graphic changes
- No end treatment required



SN15-S

Charisma Double Sided Light Boxes™

- Beautiful dye sublimated fabric graphics
- Custom sizes, brackets and finishes are available
- Lightboxes grab attention
- Energy efficient LED lighting



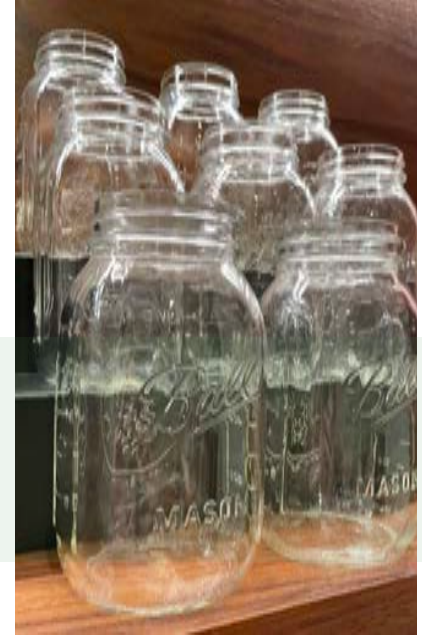
XSD34-S



Steel Shelf Risers

Steel Risers

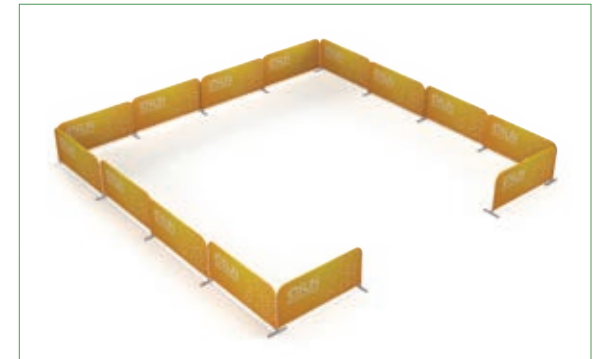
- Display more merchandise
- Make merchandise more easily visible
- Custom sizes and colors available in Qty 25+
- All metal construction
- Fast and easy assembly, save on shipping



Branded Queuing System

Crowd Q Stand™

- 1-1/4" Aluminum tubing construction
- 36" H x 81" W Graphic size - Total stand height 39-1/4"
- Each stand includes qty (2) 3" W x ~17" Long steel bases
- Each base has 2 stems to allow building continuous walls or 90 degree angles
- Fabric cover sold separately, available as an add on



We Manufacture Over 2,000 Standard Visual Items

Aluminum Slat wall • Banner Stands • Charisma SEG • CounterTops •
Drop-In Frames • Easels • Hanging Graphic Hardware • Magnetic Displays
• Hand Sanitizer Stands • Cashier Shields • Modular Retail Displays • Rigid
Graphic Stands • SignPost • Snap Frames • Tension Fabric Structures

Custom is our specialty!

Let us know how we can help your business

