



NEW

Products

- Drop-In Frames
- Lollipop Stands
- Banner Stands
- CounterTops
- Incline Stands
- Charisma SEG 3D
- SEG Trifecta Stand
- SEG Expo Stand
- Recent Best Sellers
- Clear Partitions
- Custom Brackets
- Sanitizer Stands
- Vaccine Privacy Booth
- Cashier Shields
- SideBAR

US Made – FAST – No US tariffs
Custom is our specialty



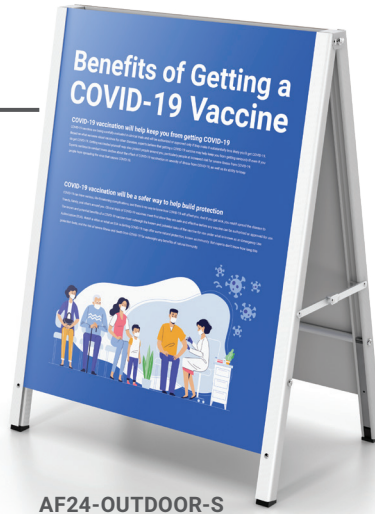
DONE
design and print

Drop-In Frames

Outdoor Folding A Frame & Slim Convex Poster SignHolder

Outdoor Folding A Frames

- Aluminum, legs and stays
- Units collapse & fold compactly
- Accepts graphics from 5/32" up to 1/4" thick
- Top entry slot, non-slip tips
- Steel weight for added stability
- **AF22-OUTDOOR** for 22" x 24" graphic
- **AF24-OUTDOOR** for 24" x 36" graphic



AF24-OUTDOOR-S

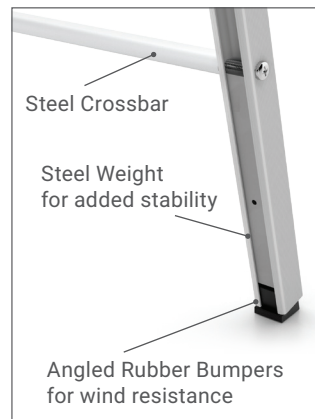
Great for Outdoor Use!

↓
For Media
from 5/32"
up to 1/4"
↑

Specify: Model

Model	Size	Color
AF22-OUTDOOR-S	22"w x 28"h	Silver
AF22-OUTDOOR-B	22"w x 28"h	Black
AF24-OUTDOOR-S	24"w x 36"h	Silver
AF24-OUTDOOR-B	24"w x 36"h	Black

-S Satin Silver or -B Matte Black



Slim Convex Poster SignHolder

- Rise above customers with key messages
- Perfect for airports, exhibits, retail, restaurants, malls and tradeshows
- Avoid ladders while elevating message
- Change out graphics fast
- Built strong, all metal construction
- Holds 12"w x 92"h graphics



↓
.040" to .060" thick
Styrene Suggested
↑

Benefits of buying US Made

- Quality you can rely on
- Speed - Fast production and shipping
- No tariffs - Safe products
- No customs delays
- Support U.S. jobs



Table top
available

Ideal for
food service

VX1292-S



Drop-In Frames

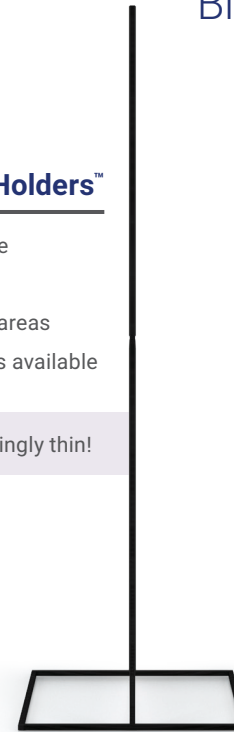
Blade Poster SignHolder



Blade Poster SignHolders™

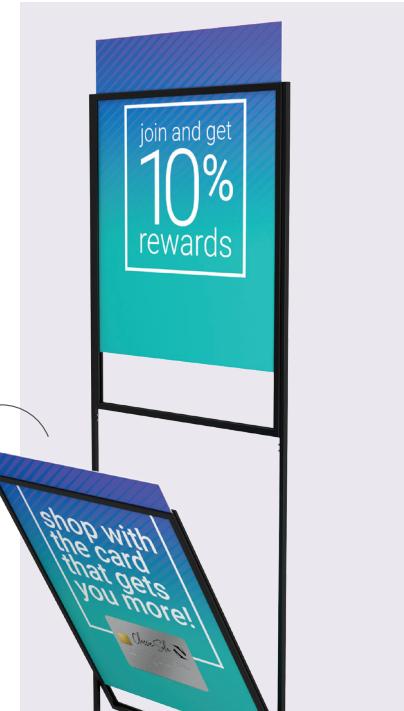
- Slender 5/8" thick profile
- Welded steel base
- Suitable for high traffic areas
- Custom sizes and colors available

Amazingly thin!



Customization

Sizes, colors, different bases.
Quantity minimums apply.



Release snap button and bottom frame pivots for graphic insertion

Specify: Model

Model	Tiers	Graphic w" x h"	Ht.	Wt.
BL1422-1	1	14" x 22"	65"	7 Lbs.
BL1422-2	2	14" x 22"	73"	9 Lbs.
BL1422-3	3	14" x 22"	88"	11 Lbs.
BL2228-1	1	22" x 28"	65"	8 Lbs.
BL2228-2	2	22" x 28"	73"	11 Lbs.
BL2228-3	3	22" x 28"	93"	13 Lbs.

Matte Black 

Accessories



Weighted Cover

BLWC14 For **BL1422** 14" x 22" (~15 lbs.)
BLWC22 For **BL2228** 22" x 28" (~25 lbs.)



SLB3 Lit. Baskets (for 22" w units only)
(1) 11" x 17" tabloids or
(2) 8-1/2" x 11" stacks.



Coroplast® White, 4 mm
COR6 14" x 22"
COR7 22" x 28"



Clear or Matte lenses,
sold in pairs.
CPL6 or **CPM6** 14" x 22"
CPL7 or **CPM7** 22" x 28"

Drop-In Frames

Monster Frame Divider



Monster Frame Pedestal SignFrames™

- NST2436-S
- With horizontal divider
- 19" Round 15 lbs base

Monster Frame Shoe Shelf

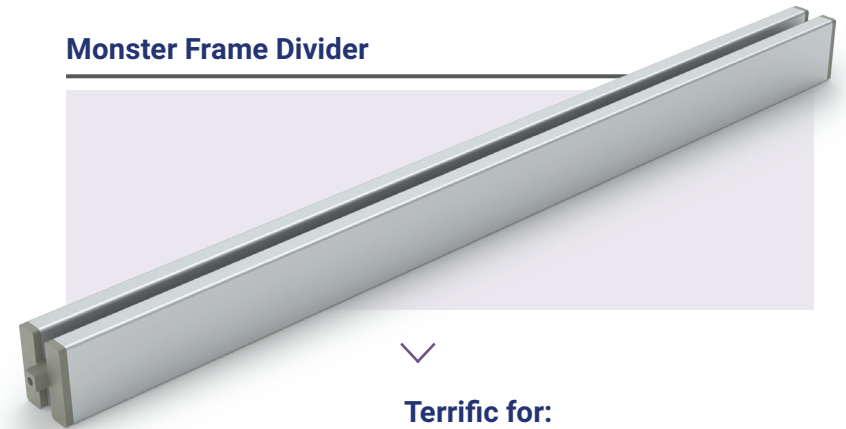
- Monster Drop-In Frames
- Accommodates graphics up to 1/4" thick
- 1-1/4" profile, top load
- Shown with optional drop in crossbar and custom shoe shelf



Monster Frame Aisle Markers



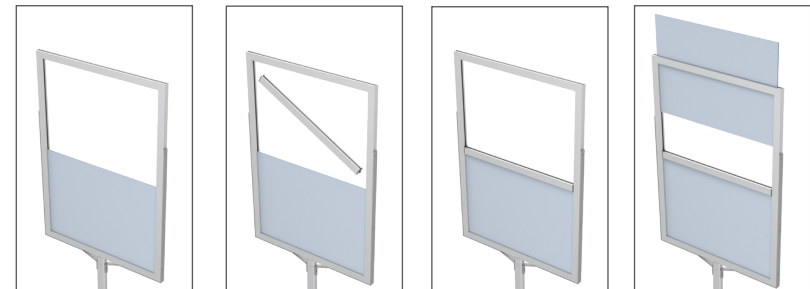
Monster Frame Divider



Terrific for:

- Wayfinders
- Restaurants
- Retail Environments
- Banks

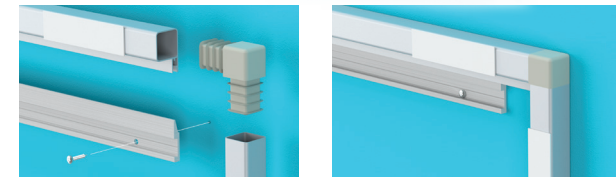
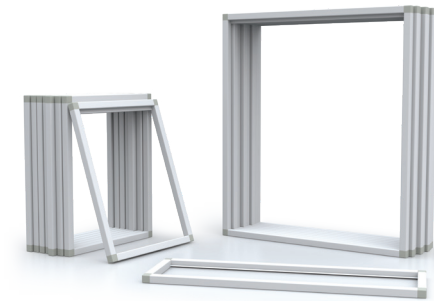
Frame adapts as your needs change



Increased flexibility, subdivide the frame into different graphic spaces. Customized to fit your needs. Use the same frame many different ways.

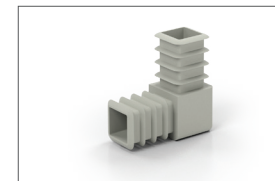
Drop-In Frames

Floating StandOff Mounts™

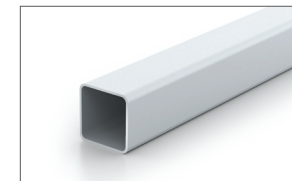


Floating StandOff Mount hangs from wall cleat.

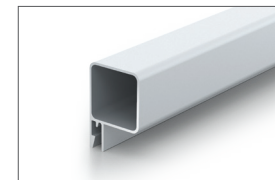
Components - Parts



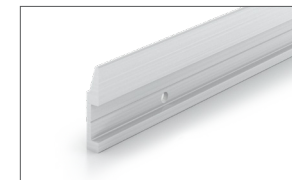
Right angle push in corners.



1" square aluminum, quick, tool-free assembly.



Top section hangs from wall cleat.



Wall mount cleat includes mounting holes. (mill finish aluminum)

Floating StandOff Mounts™

- Support for the digital image revolution
- Artists everywhere are printing on metal panels, and the images are often eye popping.
- Increase impact by using our new Floating StandOff Mounts – today's new modern way to display digital prints.
- Prints are set off the wall an inch creating a floating effect, framelessly, with no visible hardware.

Bulk Components

Model	Corners & Tubing
OATCL4	1" Square "L" Corners (Bag of 4)
OATCL100	1" Square "L" Corners (Bag of 100)
OATCSQ72	1" Square Aluminum 72" long
OATCCR72	1" Square Aluminum Cleat Receptive 72" long
OATCFC72	French Cleat 72" long
OATCHB100	High Bond Tape, Pack of 100 pcs. 3" long

Complete Kits

Includes StandOff Mount, Aluminum Mounting Cleat & High Bond Mounting Tape.

Model	StandOff Mount	Graphic Size
OAT1818	18"w x 18"h	24"w x 24"h Graphic recessed 3"
OAT1830	18"w x 30"h	24"w x 36"h Graphic recessed 3"
OAT2434	24"w x 34"h	30"w x 40"h Graphic recessed 3"
OAT3042	30"w x 42"h	36"w x 48"h Graphic recessed 3"
OAT4266	42"w x 66"h	48"w x 72"h Graphic recessed 3"



Specify Orientation

- H Horizontal (Landscape)
- V Vertical (Portrait)

Digital print (not included), attached to StandOff Mount.

Drop-In Frames

Lollipop Stands™

Lollipop Stands™

- Unique drop-in design
- 13" and 15" diameter standard models
- Use with circular or shape cut rigid graphics
- Lightweight & portable
- Built to last with all metal construction
- 13" diameter 7 lbs steel base
- Ideal for double sided graphics
- Unassembled for cost efficient shipping

↓
For Rigid Media
up to 6mm / 0.236"
↑

Model	Minimum Graphic Size	Wt. lbs
LOLPOP13-H-B	13" Diameter half circle	9
LOLPOP15-H-B	15" Diameter half circle	9

Color -B Matte Black 



LOLPOP15-H-B

Ideal for circles
+
Limitless Shape Cut Options



36" h Upright

2x screws for strong attachment



LOLPOP13-H-B

Drop-In Frames

Lollipop Stands™

Perfect for Restaurants, Retail, Hotels, and more!



Custom is our specialty

We can customize a solution to your needs, including size, shape, color, and more!
Min qty 25+ depending on complexity



Wall or column mounts available



Banner Stands

Allé Fabric Pillowcase Stand



Curved Allé Stand

APC1 with
GFX-APC



Curved Angled Stand

APA1 with
GFX-APA



Curved Flat Stand

APF1 with
GFX-APF



Unique Eye Catching Shapes

Stand	Graphic	Description
APC1	GFX-APC	Curved Allé
APA1	GFX-APA	Angled Allé
APF1	GFX-APF	Flat Allé

Beautiful graphics & attractive shapes demand attention!



Model	Travel Bag Description
EBG-A	Travel Bag to hold the stand and graphic.

Allé Pillowcase Banner Stands™ Graphics

- Customized versions available and quoted on request.
- Close tolerance aluminum alloy tubing.
- Swaged and spring button construction.
- Weighted steel base with reliable support bushing.
- Units ship economically and are easy to assemble without tools.
- Designed for ~33" w x ~80" h graphics



Units ship economically and are easy to assemble without tools.

Banner Stands

American Eagle Pole Pocket

American Eagle Banner Stand

Elegant - Fixed Width Banner Stands

- Lightweight & strong
- Pole pocket mounting
- Satin finishes
- Portable, built to last
- Steel weighted bases
- 8' & 10' sides in 2 screw together sections
- Aluminum alloy

Stand	Graphic	Graphic Size	Bag
FBS56	GFX-FBS56	5' w x 6' h	-
FBS58	GFX-FBS58	5' w x 8' h	EBG9
FBS66	GFX-FBS66	6' w x 6' h	-
FBS68	GFX-FBS68	6' w x 8' h	-
FBS86	GFX-FBS86	8' w x 6' h	-
FBS88	GFX-FBS88	8' w x 8' h	EBP4 or EBG9
FBS108	GFX-FBS108	10' w x 8' h	EBG9
FBS1010	GFX-FBS1010	10' w x 10' h	EBG9

2-3/4" Pole Pocket recommended for graphics

Model	Travel Bag Description
EBG9	63" Single Carry Bag
EBP4	Premium Padded Bag - 3" x 12" x 48"

Pole Pocket mounting for 1-1/4" diameter crossbars



Satin finished aluminum tightening pucks



8' & 10' wide units have center support plate.

Please note: Support plate is off center.

Aluminum alloy 1-1/4" satin finished uprights

Quality constructed, built to last

Racetrack oval laser cut bases

Center Support to level crossbar

FBS86

Color



-S Satin Silver

Unit ships knocked down for cost efficient transit.

LED with Clamp for Graphic Stands



LEDLF

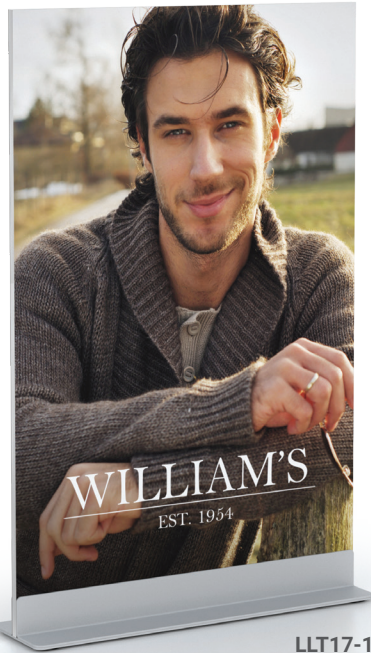


CounterTop Displays

Double LL Mounts & Adjustable Double LL Mounts

CounterTop Double LL Mounts™

- Heavy gauge solid steel
- Welded construction
- Texture powder coated finish
- 2-1/2" Wide x 1" High
- Non skid, non marking pads
- Rounded corners
- Polybagged, bulk packed



LLT17-14-S

Redesigned!

Comes fully assembled, no tools required

Sleek modern design

Graphic simply drops into receiving track

3/16" Graphic Track

Model	Track Length
LLT85-316	8-1/2"
LLT11-316	11"
LLT14-316	14"
LLT17-316	17"
LLT24-316	24"
LLT30-316	30"

1/4" Graphic Track

Model	Track Length
LLT85-14	8-1/2"
LLT11-14	11"
LLT14-14	14"
LLT17-14	17"
LLT24-14	24"
LLT30-14	30"

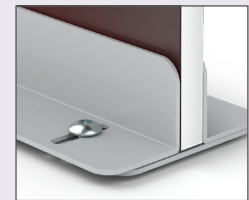
Specify: Size — Color -S Satin Silver or -B Matte Black



Adjustable CounterTop Double LL Mounts

- Accepts all self standing media up to 1/2" thick
- Steel construction
- 2-1/2" Wide x 1" High
- Powder coated finishes
- Tremendous flexibility

Adjustable screws to accommodate up to 1/2" thick media



Model Length

ALLT85	8-1/2"
ALLT11	11"
ALLT14	14"
ALLT17	17"
ALLT24	24"
ALLT30	30"

Customization ideas

- Choices include custom
- Lengths
- Color matches
- Graphic thickness
- Multiple track units for layering effects



CounterTop Displays

Wireform

Wireform Fabric Pillowcase Stands

- Use dye sublimated fabric graphics on these economical stands.
- Simple slip over and on, Double sided impact.
- All metal, welded, matte black, fully assembled.

Model	Graphic Size
WFPC1117	11" w x 17" h
WFPC1422	14" w x 22" h

All CounterTop Stands are bulk packed.



Customize for your needs!

Custom requests whether for size, color or other aspect are encouraged.



Wireform Flip Ring Stands

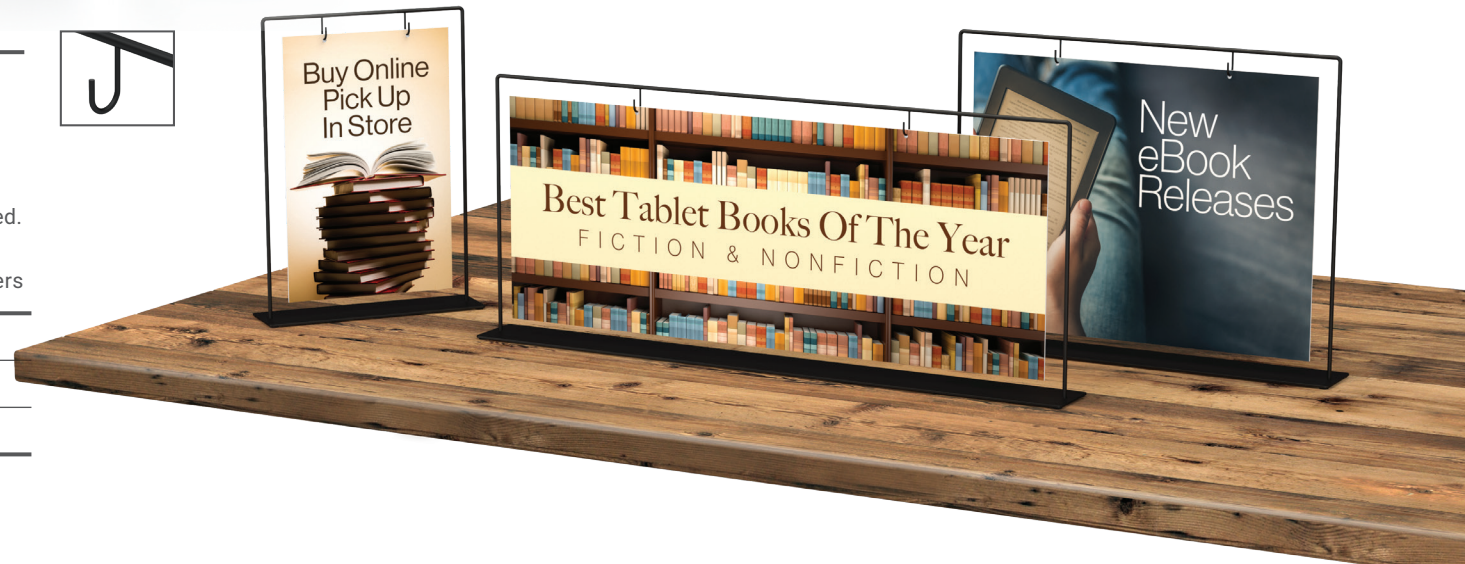
- Use semi-rigid graphics with holes on these economical stands.
- Use a single graphic or multiple ones and "flip" from one hanging graphic to another.
- All metal, welded, matte black, 1" silver rings, fully assembled.

Model	Graphic Size	Rings
WFFR57	5" w x 7" h	2
WFFR8511	8-1/2" w x 11" h	2
WFFR1185	11" w x 8-1/2" h	3
WFFR114	11" w x 4" h	3

Wireform J Hook Stands

- Use semi-rigid graphics with holes on these economical stands.
- Simply hang punched graphics from hooks. Double sided impact.
- All metal, welded, matte black, fully assembled.

Model	Graphic Size	J hook centers
WFJH1117	11" w x 17" h	5 1/2"
WFJH2217	22" w x 17" h	11"
WFJH3614	36" w x 14" h	18"



Charisma SEG™

Incline Stands



INCSEG1-2260-S

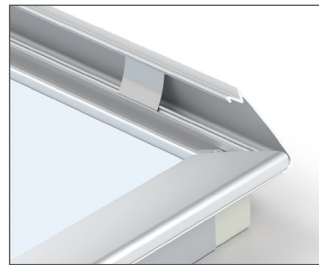
Incline Stands™

- All metal construction, built to exacting standards
- Ships flat, 60 second set up, portable
- Many different frame options, single or double sided
- Lightweight and strong, but portable and effective
- Standard graphic size is 22" x 60"

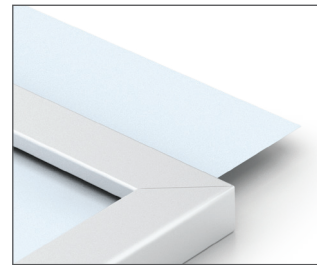
A nice way to provide ambience and information in retail settings.

Our most popular Front Options:

EasyOpen SnapFrame™
Poster & paper signs up to 1/32"



Monster Drop-In Frames™
Thin graphics up to 1/4" board



Charisma SEG Frame™
Silicone edge fabric graphics



Standard and custom models available



INCE01-2260-S
One-sided
SnapFrame



INCE02-2260-B
Two-sided
SnapFrame



INCNST1-2260-B
One-sided
Monster Frame



INCNST2-2260-S
Two-sided
Monster Frame



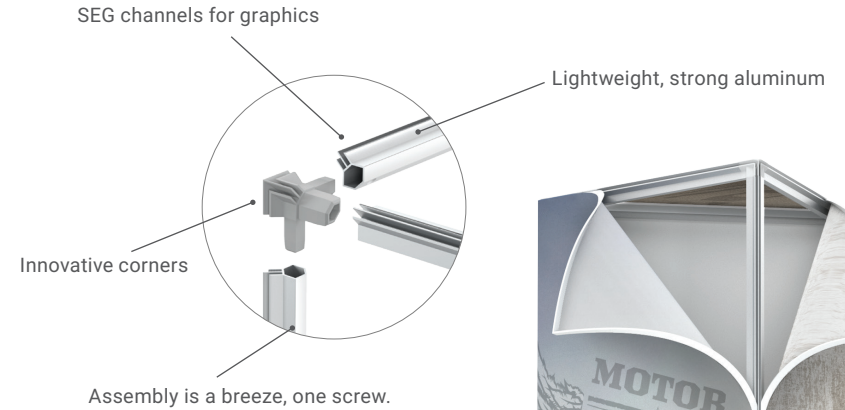
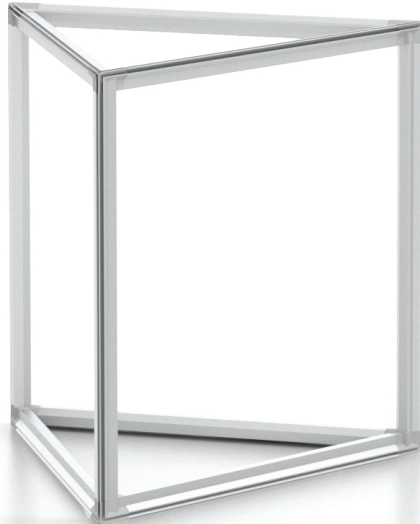
INCSEG1-2260-S
One-sided
SEG Frame



INCSEG2-2260-B
Two-sided
SEG Frame

Charisma 3D SEG™

Triangular Towers



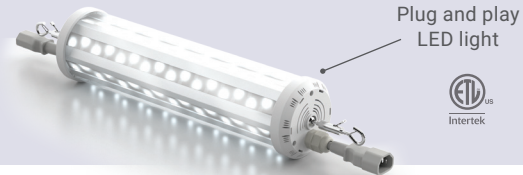
Easy to attach
and change out graphics

Triangular Towers – Non Lit

- Floor model standard
- Unique profile and corner
- Easy SEG graphic changeouts
- Square or Triangle Shape
- Satin Silver Finish
- Custom sizes available
- Ships flat for cost effective shipping
- Hanging quoted on request

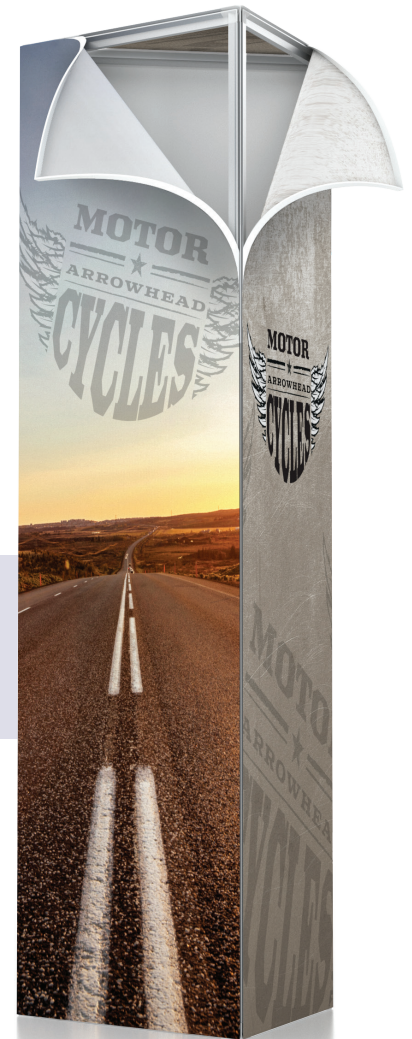
Available Torpedo LED Exhibit Light

- Plug and play
- ETL Listed
- 6500K color temp.
- 6' high units have two lights



Custom Sizes
Available

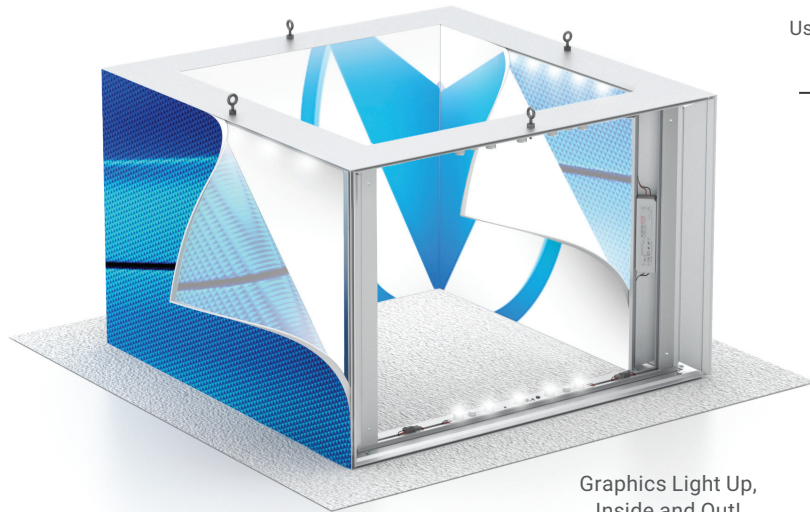
XS3G



Square Cubes			Rectangular Towers			Triangular Towers		
Model	Lit	W x D x H	Model	Lit	W x D x H	Model	Lit	W x D x H
XS2C	XS2C-LED	2' x 2' x 2'	XS2T	XS2T-LED	2' x 2' x 6'	XS2G	XS2G-LED	2' x 2' x 6'
XS3C	XS3C-LED	3' x 3' x 3'	XS3T	XS3T-LED	3' x 3' x 6'	XS3G	XS3G-LED	3' x 3' x 6'
XS4C	XS4C-LED	4' x 4' x 4'	XS4T	XS4T-LED	4' x 4' x 6'	XS4G	XS4G-LED	4' x 4' x 6'

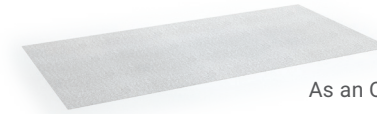
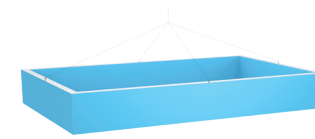
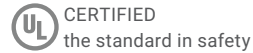
Charisma SEG/LED Inside Out Light Boxes™

Recent Best Sellers

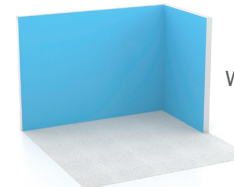


Graphics Light Up,
Inside and Out!

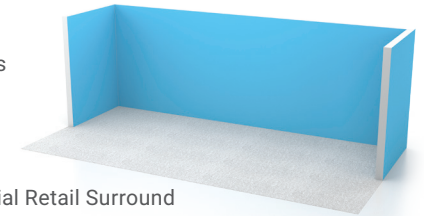
Usable in different configurations
L's, U's and Straight Walls



As an Overhead



Wall Corners



Experiential Retail Surround

Illuminated Inside and Out!

- LED light strips along top and bottom rails
- LEDs feature wide beam angles, and long life
- Lights are 6500°K color temp, low heat
- Aluminum trim is satin silver
- Easy SEG graphics installation and change out
- Power supply cords exit the top of the lightbox

SEG/LED Inside Out Light Boxes™

- Dramatic effects
- Lighting – both inside and out
- Heavy duty construction
- Easy SEG installation
- Custom sizes available
- Satin silver finish

Model	W x D x H
XSI084	8' x 4' x 2-1/2'
XSI0812	8' x 12' x 2-1/2'
XSI01010	10' x 10' x 2-1/2'

Allow additional lead time
for these units

Great For:

- Retail stores
- Showrooms
- Lobbies
- Exhibitors

Suggested Use:

- Hanging
- Corners
- Freestanding
- Partitions



Charisma SEG Trifecta and Expo Stand™

Recent Best Sellers

Ultimate Flexibility
Use with 1, 2 or 3 graphics!



XP3N1
with (3)
graphics

Model	Height	Weight
XP3N1	72"	30 lbs

Charisma Trifecta Stands™

- Double Sided Charisma SEG
- Show One, Two or Three Graphics Per Side
- Aluminum alloy frame
- Weighted 22" x 18" steel base

Display Options For Each Side

- (1) 22" x 72" graphic
- (3) 22" x 24" graphics
- (1) 22" x 24" and (1) 22" x 48" graphics

Charisma SEG Double Sided Expo Stands

- Easy SEG Insertion
- Aluminum construction
- Double sided viewing
- Simple assembly
- Bases: Full width (XPS) / Round base (XPLF)

Lit LED units
also available



XPS72



XPS28

Model	Graphics	Graphics Size	Base	Uprights	Ht.	Wt. lbs
XPS28	2	22" x 28"	24" x 12"	2	64"	21
XPS36	2	24" x 36"	24" x 12"	2	72"	22
XPS72	2	24" x 72"	24" x 12"	N/A	72"	22
XPLF28	2	22" x 28"	17" Round	1	64"	19
XPLF36	2	24" x 36"	17" Round"	1	72"	20

Recent Best Sellers

Hercules Roll Around SignHolders™

- Heavy duty 22" x 28" Portable SignHolders
- 30 pound steel powder coated base
- 3" ball bearing locking casters with brakes
- Double sided viewing
- Aluminum alloy frames
- Large format oval uprights



For Media
up to 3/16"

Top load 3/8" margin
covered by frame.

RL328-S



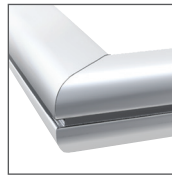
Perfix Pedestal SignFrame™

- Heavy duty extruded alloy
- Accepts graphics to 3/16" thick
- Curvilinear frames, top slot
- All frames are open 2 sides
- All Metal - Contemporary Design

For Media
up to 3/16"

IMPRINTABLE

SF3S-SQ-X-V-S



Sleek, functional, curvilinear design,
available in Satin Silver or Matte Black

Top Loading, Accepts
Media To 3/16" Thick

Optional
Round Base



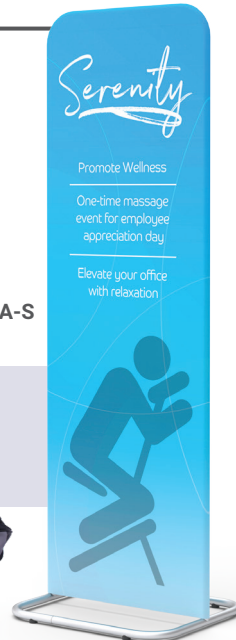
Custom sizes Available

Harmony Air Banner Stands™

- Portable - fits in airline carry on
- 1" constant diameter aluminum uprights. Sleek design.
- Swaged, spring button, and shock cord construction.
- Curved or square tops
- Feather light at 3-4 lbs
- Tubular aluminum base

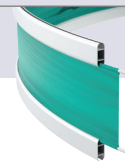
HMN1-A-S

Rolling carry-on
bag available
EBG-S



Fabric Hemmed Graphics

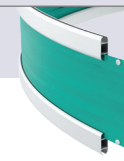
Plastic dowels (included) insert into hemmed pole pockets top and bottom.



or

Styrene Graphics

Hang from internal plastic screw spacer sets (included).



Halo Rail™ Kits

- Curved satin aluminum profiles handsomely house pole pocket graphics
- Strong, yet lightweight
- Height is 2-1/2" higher than graphic
- Ships ready for very easy assembly. Eyebolts come already attached
- Quick graphic changeouts
- No costly vertical struts needed



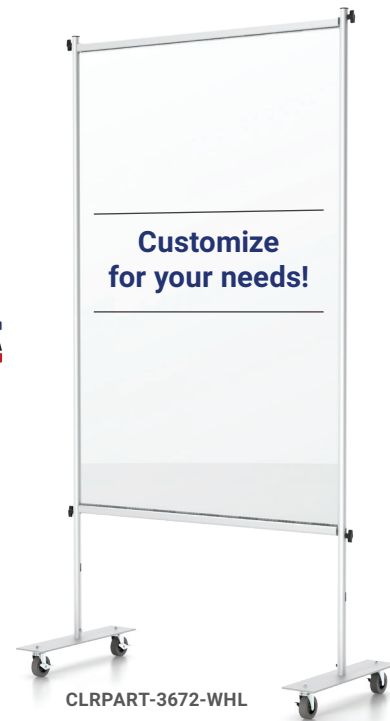
Clear Room Partitions™


Recent Best Sellers

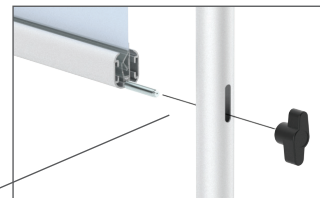


Clear Room Partitions™

- Offered in 2 style bases - Heavy Steel bases & Wheeled bases
- Fire retardant clear plastic lens (NFPA701)
- Portable, strong & lightweight
- Quick and easy setup
- Knocked down for shipping savings
- Offered in 2 sizes, custom sizes available



Color 
-S Satin Silver



The Clear Room Safety Partition is ideal for the office, restaurant, salon, hotel lobby and any other environments that require social gathering. The movable safety partition allows you to setup spaces on demand.



Heavy Steel Base



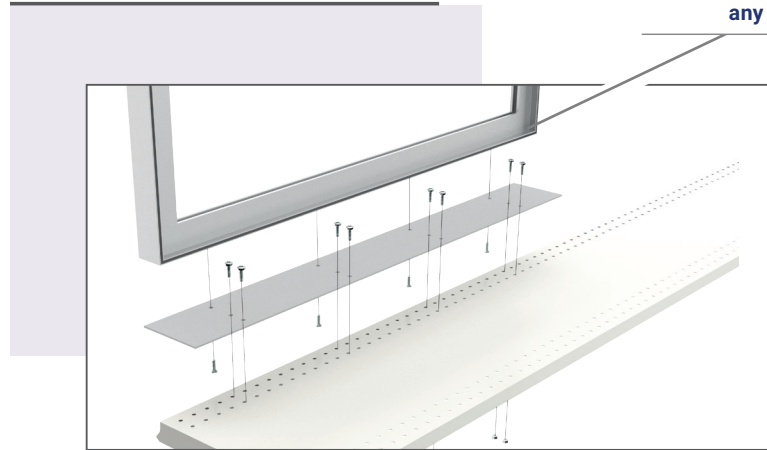
Wheel Base

Model	Size	Description
CLRPART-3672	36" w x 72" h	Floor Partition Stand with clear vinyl
CLRPART-7272	72" w x 72" h	Floor Partition Stand with clear Vinyl
CLRPART-3672-WHL	36" w x 72" h	Floor Partition Stand with wheel base and clear vinyl
CLRPART-7272-WHL	72" w x 72" h	Floor Partition Stand with wheel base and clear vinyl

Custom Brackets

Retail Customer Examples

Shelf Attachment

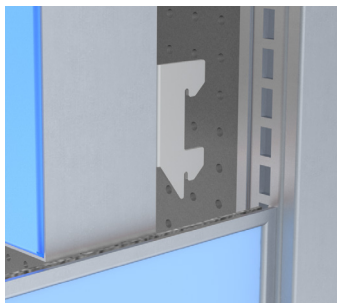


Attach our Graphic Frames to existing Gondola Shelving.

Connect any frame



Slotted Standard Brackets



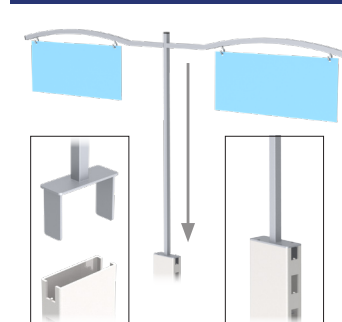
Brackets to fit any standards including Lozier, Madix, or Opto, and warehouse racking

Standoff from 1/2" Merchandising Bar



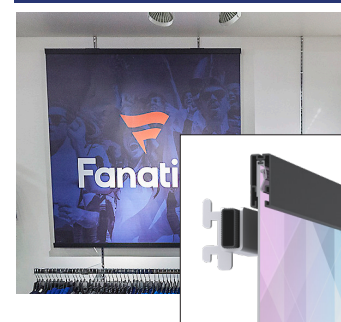
Standoff
Sturdy, welded construction

Drop into Uprights



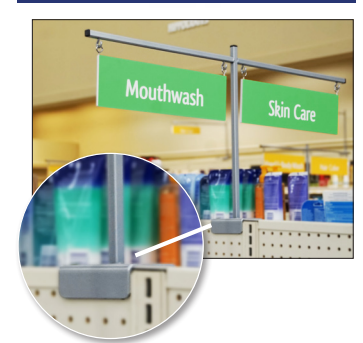
Base
Slides into existing Lozier, Madix, or warehouse racking

Drop into Existing Cup Brackets



Drop into existing cup brackets, aluminum SnapGraphics SN5

U Brackets



Brackets
Fits over existing fixture

Tailored to your application!



Custom is our specialty – Reach out today

Hinged Shelf Covers

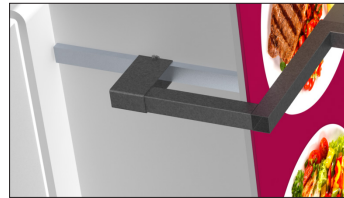


Soft close
Stay open hinge covers shelves with or without merchandise

Pegboard / Slatwall Standoffs



Clamp Under Case



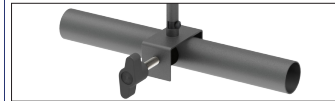
Underside View
"U" bracket is fastened to existing beam under display case



Clamp Bases



Swivel parallel or perpendicular

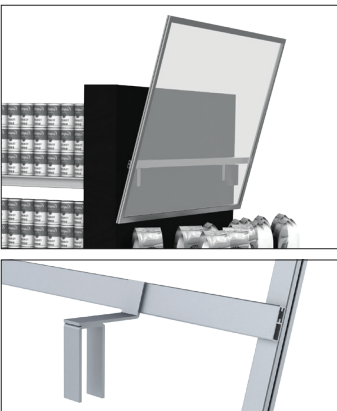


Shelf Divider Graphics



Back View

Angled Header Standoff Frame



Merchandising Arm Signs



Fixture Cover



Mounting Brackets hangs onto (4) posts

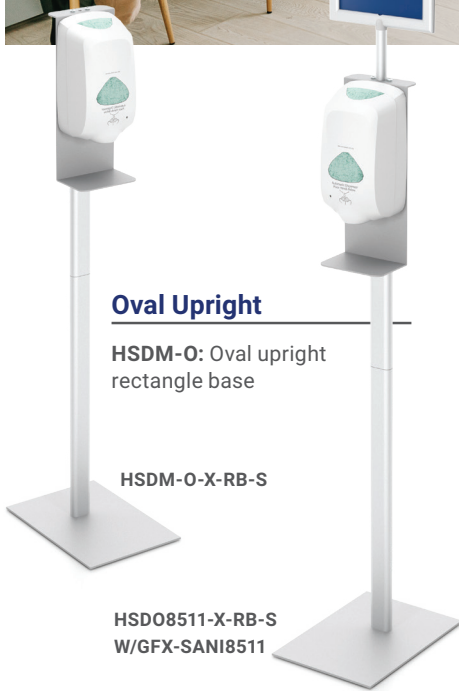
Fixture Spine Shoe Divider



Fits over existing fixture spine

Example of recent fabricated parts and projects

Hand Sanitizer Dispenser Stands



Hand Sanitizer Dispenser Stand

- Fixed 48" H upright (2 section upright)
- Unit without sign includes a screws at top for attaching back plate
- Optional SignHolder - Attaches to top of back plate, top loading sign frame 8.5" W x 11" H or 11" W x 14" H
- Optional styrene graphic (GFX-SANI8511 and GFX-SANI1114)
- Custom sizes available starting at qty 25, reach out for a quote

Oval Upright

HSDM-O: Oval upright rectangle base

HSDM-O-X-RB-S

HSD08511-X-RB-S
W/GFX-SANI8511



Manual – Lowest Cost Stands

HST: Floor stands for smaller bottles



HST-X-SQ-S

HSG: Floor stands for gallon bottles



HSG-X-S

HSTW: Wall Mount bottle holder (set of 4)



HSTW-S

Automatic Dispenser Stands

HSDM: Floor stands for automatic dispensers



HSDM-X-SQ-S

HSD8511 or HSD1114: Floor stands with frame



HSD1114-X-SQ-S

HSC: Countertop dispenser holder



HSDC-S

Foot Operated

HSG: Foot operated sanitizer dispenser



HSG-FOOT-S

Wipes

HSW: Floor stands for wipes



HSW-X-SQ-S

HSW114-X-SQ-S

HSW-W: Wall Mount wipes holder



HSW-W-S

Dispensers, Sanitizers, & Wipes not included

Vaccine Privacy Booth

Fabric graphics create
branded privacy booths



PW353 w/GFX-PW353-D | Stand with double sided pillowcase graphic

Vaccine Privacy Booth

- Brandable
- Portable
- Optional Fabric Graphics



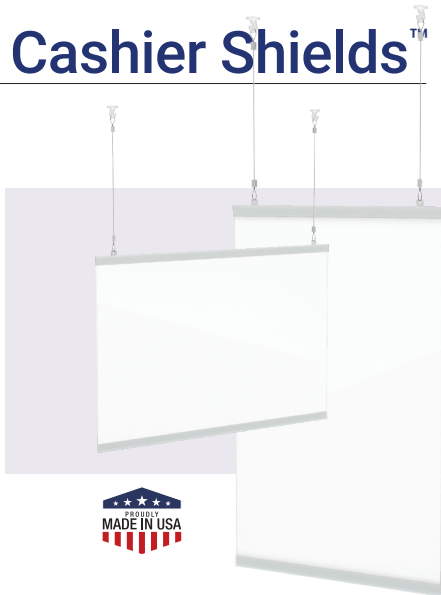
Rigid Panel Vaccine Privacy Booth

- Rigid Panels and
Skyscraper Mounts



(1) SKMM6-S | (2) SKRA6-S | (1) SKCU6-S
and Rigid Graphics (not included)

Cashier Shields™



Hanging Cashier Shield Kit - Includes:

- Top and bottom GC Gripper Extrusions
- 1 Thin clear lens included
- 2 Universal hanging clips
- 2 Cables with adjustable cable locks
- Clear hinged hooks for dropceiling attachments
- Standard 28" w x 22" h or 56" w x 22" h

Model	Size	Description
GCHS-2822	28" w x 22" h	2 ANC05, 2 ADC1312, 1 Lens
GCHS-5622	56" w x 22" h	2 ANC05, 2 ADC1312, 1 Lens



C-clamp install

Fixed Position System

Custom Example – Minimum Qty of 50 –
Designed to your specification!

Each Kit Includes:

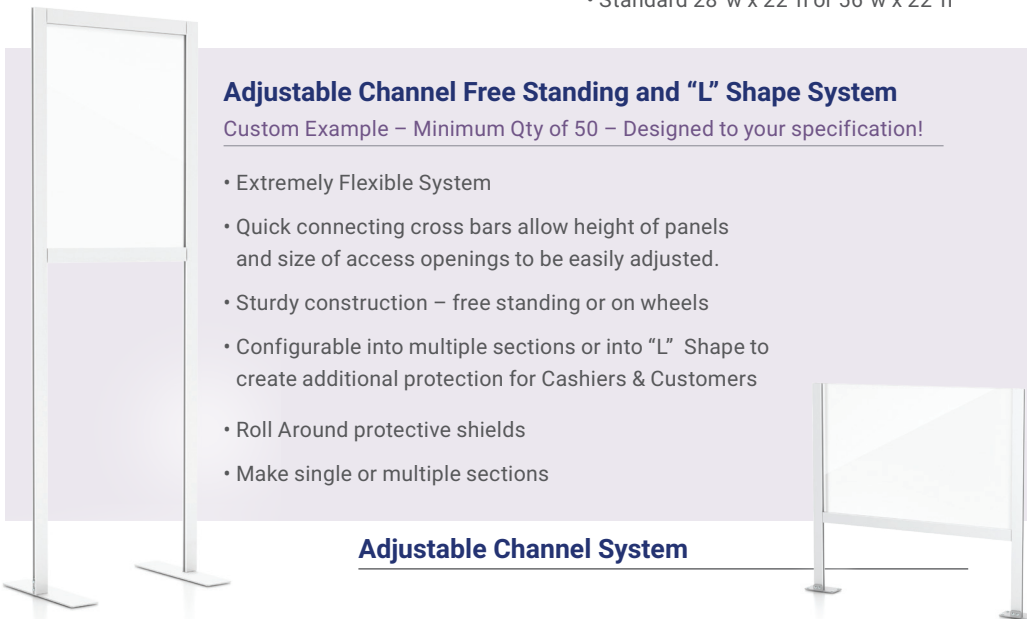
- Mini Oval Uprights with panel mounting hardware
- Put holes in your clear plastic to mount
- Non-marring clamp on base
- Custom sizes available

Adjustable Channel Free Standing and "L" Shape System

Custom Example – Minimum Qty of 50 – Designed to your specification!

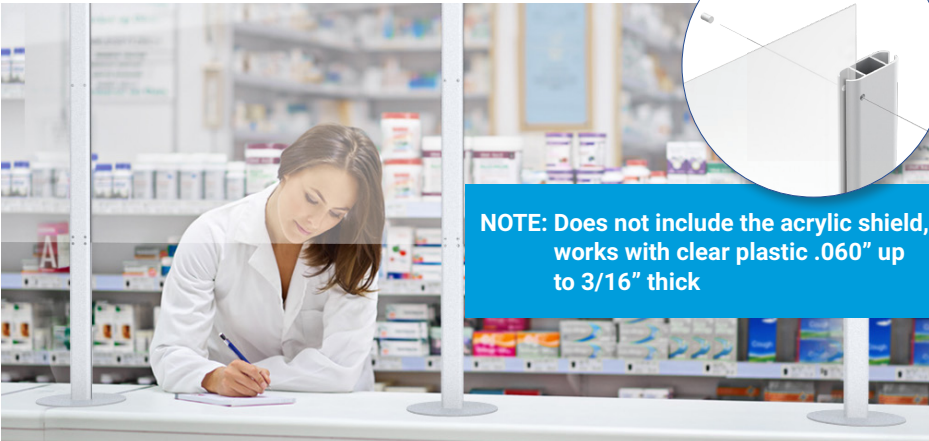
- Extremely Flexible System
- Quick connecting cross bars allow height of panels and size of access openings to be easily adjusted.
- Sturdy construction – free standing or on wheels
- Configurable into multiple sections or into "L" Shape to create additional protection for Cashiers & Customers
- Roll Around protective shields
- Make single or multiple sections

Adjustable Channel System



Free Standing Shield - Fixed Width

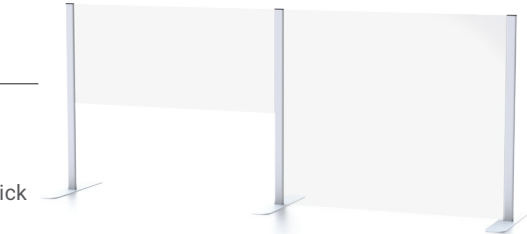
- 1/2" ID channel aluminum uprights
- Skyscraper Mounts™ | No minimums
- One piece heavy duty steel base
- Use .060 up to 1/2" thick plastic or acrylic
- Steel set screws lock panels in place (plastic set screws available if needed)
- Custom stop position is available by request



NOTE: Does not include the acrylic shield, works with clear plastic .060" up to 3/16" thick

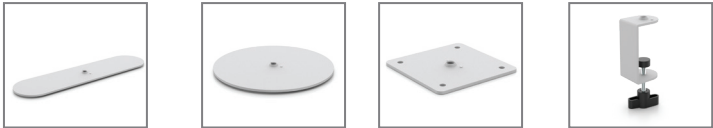
Cashier Shields

- Aluminum uprights with steel bases
- Non-marring base options
- Use your own acrylic .060" up to 3/16" thick
- Standard uprights height is 36"



• CBSHR-SS-RT-S (Pair of end uprights) • CBSHR-DS-RT-S (Center upright sold individually)

Base Options



Racetrack Base (-RT) with non-skid Round Base (-RD) with VHB tape Square Drill Down Base (-DD) Clamp On Base (-CL)

Custom Bases Available

End Uprights w/Bases sold as a pair	Description	Center Upright w/Base sold individually
CBSHR-SS-RT-S	36" h Uprights w/Racetrack Oval Bases	CBSHR-DS-RT-S
CBSHR-SS-RD-S	36" h Uprights w/Round Bases	CBSHR-DS-RD-S
CBSHR-SS-DD-S	36" h Uprights w/Square Drill Down Bases	CBSHR-DS-DD-S
CBSHR-SS-CL-S	36" h Uprights w/Clamp on Bases	CBSHR-DS-CL-S



Economical Cashier Shields

- Aluminum uprights with steel bases
- Non-marring base options
- Use your own acrylic or plastic lens .020" up to 3/16" thick



Base Options



Model	Description
PVT1	Tabletop Exhibit, 4 Uprights 24", Holds 3 Panels, 12 Clips
PVT2	Tabletop Exhibit, 5 Uprights 24", Holds 4 Panels, 16 Clips
PVT3	Tabletop Exhibit, 4 Uprights 36", Holds 3 Panels, 12 Clips
PVT4	Tabletop Exhibit, 5 Uprights 36", Holds 4 Panels, 16 Clips

SideBAR Table™

Brandable drink table perfect for upselling consumers. Elevate indoor and outdoor dining.



Digital Print Opportunities

Table Branding:

- Brand the table - ideal for brand sponsorship
- Raise awareness in retail setting when product is offered

Menu / Printed Collateral

- Drop in menu to enable upselling, provide recurring print revenue stream

Ships FAST

- US Made – Manufacturer direct pricing
- All metal construction

