

# BLACKMORE WAGYU

SIRE CATALOGUE



# DEAR WAGYU BREEDER



DAVID BLACKMORE

## CELEBRATING 30 YEARS OF WAGYU

It is with pride that I present to you semen from six proven Blackmore Bulls for your consideration.

This catalogue has been put together in celebration of over 30 years dedication to researching and breeding Wagyu cattle.

My interest and goals have always been different to other Wagyu breeders. Rather breed a herd where the main aim is to breed bulls to sell to other breeders; my focus has been to develop a cow herd that would produce the best and most consistent beef quality outside of Japan.

For this reason, we have rarely sold live breeding animals, while limiting embryo and semen sales to selected breeders.

### MY OBSESSION

Getting the genetics correct for our business has been my passion (often called my obsession). Being invited to Japan on numerous occasions to visit and view the five major research institutes, leading Agriculture Universities, feedlots, abattoirs and breeding farms, has been extremely humbling.

This insight into Japanese breeding, feeding, farm management, animal husbandry, carcass processing, packaging and distribution has been invaluable to the success of our business. The methods that we have successfully adopted to our own business have been featured in 11 documentaries filmed by three different Japanese network stations.

I did not want to offer semen into the market place until I was confident that I had enough pedigree depth and knowledge of these bulls proven in my own herd, to be confident that they could be used successfully in other Wagyu herds.

These nine featured bulls have reached my goal.

I have added into this catalogue some of the information that I have learnt from the Japanese master breeders. I hope this will give credibility to the pedigrees and give you confidence to use these bulls in your own breeding programmes.

Happy breeding,



We are proud to present our **Sire Catalogue**.

While we strive to provide accurate and reliable information, there may be inadvertent translational inaccuracies and/or typographical errors within the pedigree and/or carcass data. The Japanese data has been translated from different prefectures, while the data from Blackmore Wagyu's own database is the result of carcass grading done by official, qualified AusMeat assessors.

We reserve the right to make changes and corrections in the content of this catalogue at any time, without notice.

Decisions based on information contained in our catalogue are the sole responsibility of the intended individual or entity to whom it is addressed. In exchange for using this information, the individual or entity agrees to hold us not liable against any claims for damages arising from any decisions the individual or entity makes based on such information.

The results displayed in this catalogue are from cattle that have been bred, raised and fed under the Blackmore Method of Production. Different farming methods, animal husbandry and rations, may give different results.

# TAJIMA BLOODLINE EXPLAINED

## WHAT IS TAJIMA?

The Wagyu bred in Hyogo prefecture are called TAJIMA and there are three dominant bloodlines of Tajima cattle – **Nakadoi**, **Okudoi** and **Kumanami**.

The famous beef brand from the Hyogo prefecture is called Kobe beef. We are believers that only cattle born and raised in the Hyogo prefecture can be called 100% Tajima (just like champagne is exclusive to a region of France), and this is the reason we call our cattle **100% TAJIMA BLOODLINE** cattle.

Many promote the Tajima bloodline around the world; however very few have pure 100% Tajima blood cattle, as there were only 1 Tajima female and 8 Tajima bulls ever exported from Japan between 1992 and 1996.

## YEARS OF RESEARCH

David Blackmore has traced his 100% Tajima Bloodline herd back to 1910 to a bull named **Nakadoi**, and now has more than 50 animals with 100% Tajima bloodlines within the greater Blackmore Wagyu herd.

The following outlines the export history of the Tajima lines.

**Kumanami line;** There has never been an animal exported from Japan that is 100% Tajima/Kumanami bloodline. The only bull exported from Japan that has a high percentage of Kumanami blood is Takeda Farms **Itoshigenami 148**. It is estimated that he has approximately 87% Tajima/Kumanami blood.

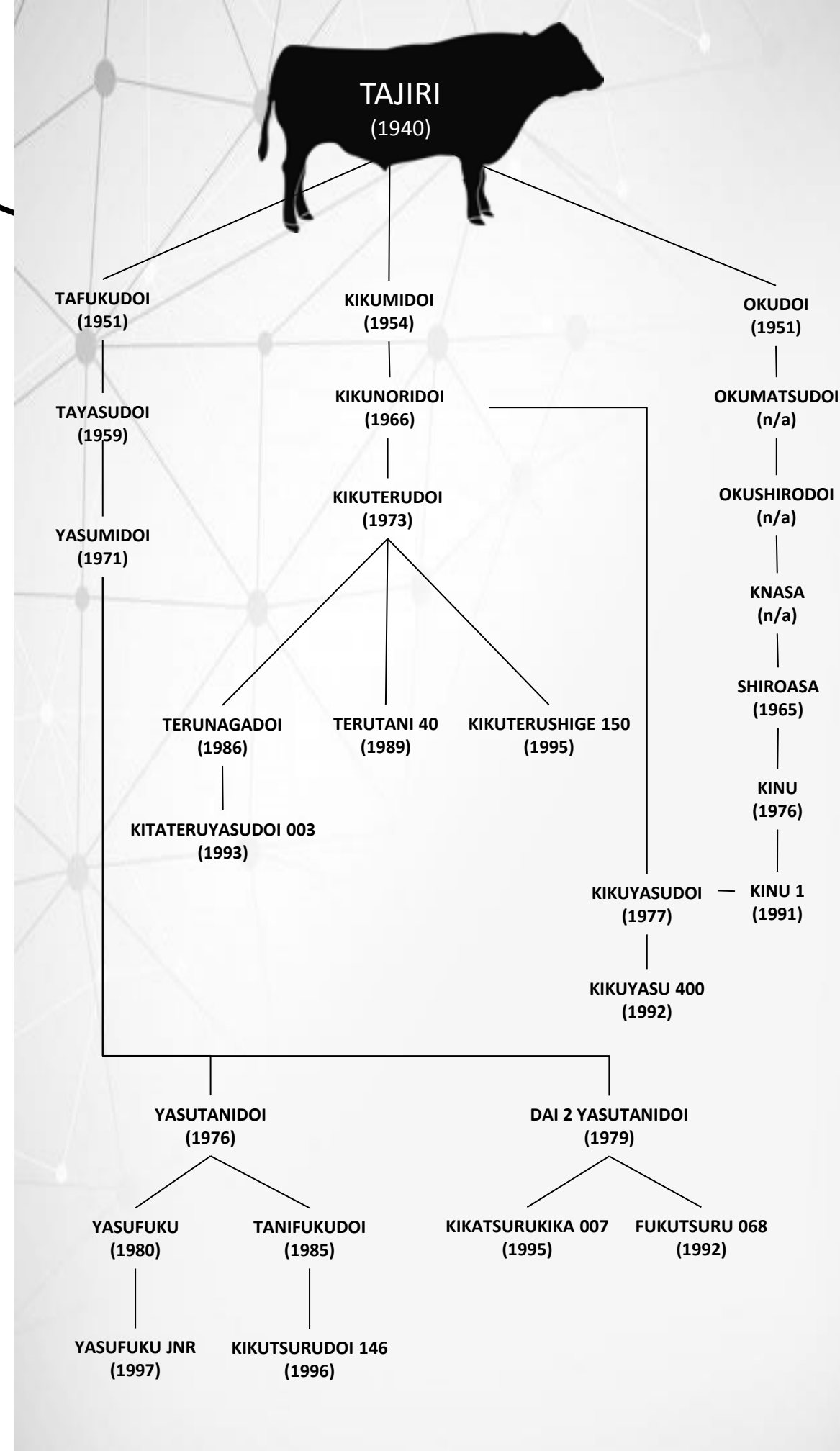
**Okudoi line;** There has never been a bull exported from Japan that carries any percentage of the Tajima/Okudoi blood. The female Takeda Farm **Kinu 1** is from the Okudoi line, which makes the Kinu family very important in future breeding programs to use as an out-cross line to reduce inbreeding.

**Nakadoi line;** There were eight bulls that have been exported from Japan that are 100% Tajima/Nakadoi bloodline cattle. These bulls can be broken down into two heritage lines (1) **Kikumidoi** and (2) **Yasumidoi**, which may assist breeders in selecting sire mating's to reduce inbreeding co-efficiency. There are four bulls that were exported that fall into each heritage line.

Both **Kikumidoi** (born 1954) and **Yasumidoi** (born 1971) are descendants of **Tajiri** (born 1940) as is **Okudoi** (born 1951). The founder of the Nakadoi line, **Nakadoi** was born on 10 March 1920.

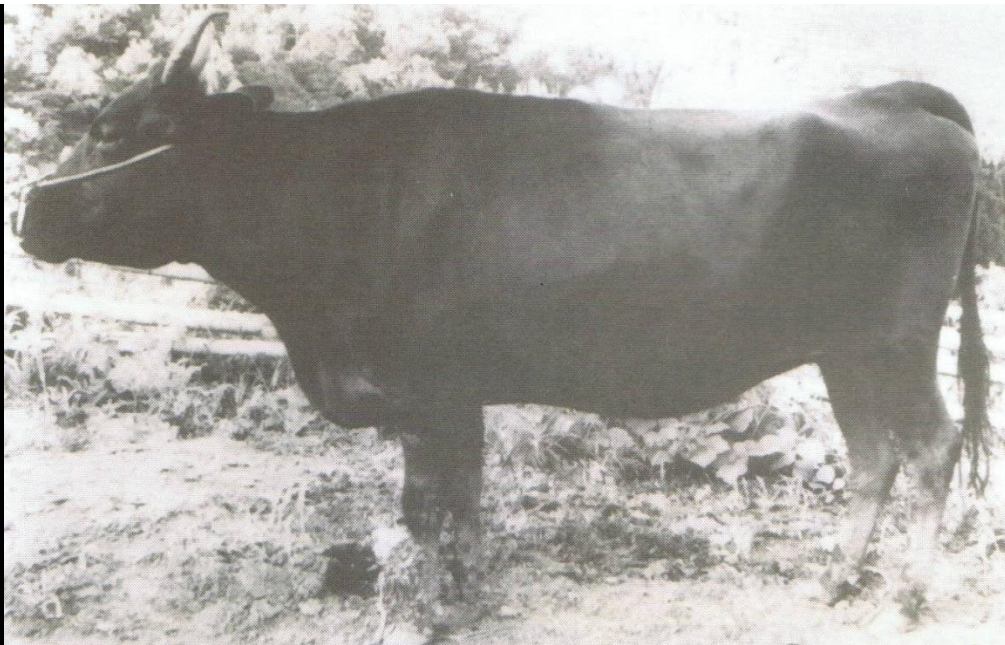
Contrary to some reports, **Michifuku** (the great carcass siring bull) is not 100% Tajima bloodline and therefore, it is obvious that his progeny will never be 100% Tajima bloodline.

Kikumidoi Line	Yasumidoi Line
Kikuyasu 400	Fukutsuru 068
Kikuterushige 150	Kikutsurudoi 146
Terutani 40	Yasufuku Jnr
Kitateruyasu 003	Kitatsurukikudoi 007



# "THE HYOGO COW"

KIKUTSURU



## KIKUTSURU

Known for her economic contribution to all three branches of the industry; breeding, fattening and male progeny, **Kikutsuru** is called the "the Hyogo cow". She was born on the 12<sup>th</sup> April 1967 in the Hyogo prefecture. She had a high level of Tajima line inbreeding, with an inbreeding coefficient of 18.3.

From 1969 to 1985 (excluding 1971), she gave birth to 16 calves, creating a record for both longevity and fecundity. She continually produced stock which became famous during that time. Her 7<sup>th</sup> calf **Kikutsuru 5**, 10<sup>th</sup> calf **Dai 2 Yasutsurudoj**, 12<sup>th</sup> calf **Kikutsuru 8** and **Tanifukudoj** her 16<sup>th</sup> calf born late in her life, all became famous Wagyu, representative of Japan.

**Kikutsuru** died peacefully in the autumn of 1987, two years after the birth of **Tanifukudoj**.

*Ono, Kenichi. "Nihon Meigy Hyakusen (Top 100 Cattle in Japan)", ch. 12.*

## CHARACTERISTICS

The main characteristics of cattle in the **Kikutsuru** line are the stable meat quality and graceful build typical of Tanba cattle. Weight gain is diverse but in the final result there are a large number of cattle which marble.

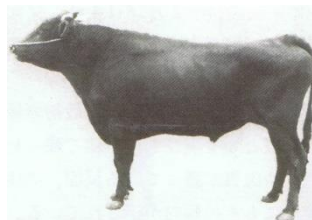
**Strong points:** marbling, meat colour, fine meat texture, hide and coat, flavour, fecundity (conception rate).

*Ono, Kenichi. "Nihon Meigy Hyakusen (Top 100 Cattle in Japan)", ch. 12.*

## BUILDING THE CORE OF JAPAN'S WAGYU

Of the cattle from **Kikutsuru's** blood line, more than 100 bulls are currently in use throughout Japan, none more famous than **Dai 2 Yasutsurudoj** and **Tanifukudoj**.

**Dai 2 Yasutsurudoj** was born February 18<sup>th</sup> 1979 to sire **Yasumidoj** and dam **Kikutsuru**. He was the first breeding bull of **Kikutsuru** to push the line of **Kikutsuru** to fame. Representative of longevity, even now his remaining straws are at the forefront and are in current use, with his progeny showing leading meat quality.



DAI 2 YASUTSURUDOJ

**Tanifukudoj** was born March 8<sup>th</sup> 1985, to sire **Yasutanidoj** and dam **Kikutsuru**. He was **Kikutsuru's** last calf (16<sup>th</sup> birth). From his sire **Yasutanidoj** he has early maturation, weight gain, and large rib eye area, while from his dam **Kikutsuru** he has good meat quality ability (meat colour and marbling). He has inherited these qualities in good balance, the reason he is now the super star of Hyogo prefecture. In Hyogo prefecture's recent figures for breeding bulls, apart from fat thickness in the top line, he was ranked first in all areas. In particular his BMS of 1.562 took first place.



TANIFUKUDOJ

**Tanifukudoj's** offspring are responsible for building the core of Japan's Wagyu.

*Ono, Kenichi. "Nihon Meigy Hyakusen (Top 100 Cattle in Japan)", ch. 12.*

## THE EXPORTATION OF THE BLOODLINE

Between 1992 and 1996, 3 male descendants of **Kikutsuru** were exported from Japan to the USA. These animals have been used by Blackmore Wagyu to create specific bloodlines in our Kinu, Aizakura and Itochiyo cow families.

**Fukutsuru 068** and **Kitatsurukikudoj 007** are sired by her son **Dai 2 Yasutsurudoj** and **Kikutsurudoj 146** is sired by her most famous son **Tanifukudoj**. It should also be noted that all three grandsons were bred from female descendants of **Kikutsuru**. There has been no greater preponderance of a bloodline exported from Japan.

## EXPORTED DESCENDENTS



Fukutsuru 068

Dai 2 Yasutsurudoj

Teruyasu

Exported by Japanese Venture Partners  
Descendant of **Kikutsuru 8**

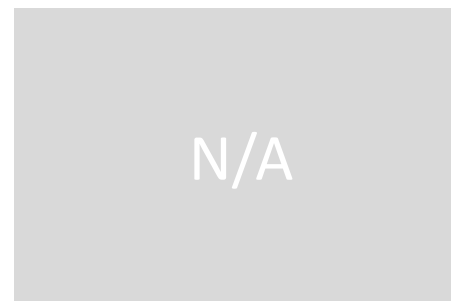


Kikutsurudoj 146

Tanifukudoj

Yasutsuru

Exported by Takeda Farms  
Descendant of **Kikutsuru 8**



Kitatsurukikudoj 007

Dai 2 Yasutsurudoj

Kikutsuru 3

Exported by E.T. Japan  
Descendant of **Kikutsuru 5**

# CREATION OF THE BLOODLINE

## OKUDOI LINE

More than 90% of bulls that belong to the Hyogo-line belong to the Nakadoi-line. **Nakadoi** was born in 1920. The ancestor of the modern day Hyogo line was **Tajiri**, born in 1940. Bulls which have **Yasumidoi** as their father, grandfather or great grandfather with the bloodline Tanfukudoi and/or Tayasudoi are the most prominent, while bulls of Kikuyasudoi and Kikuterudoi with the bloodline of Kikumidoi and/or Kikunomdoi are very popular.

*Ono, Kenichi. "Nihon Meigy Hyakusen (Top 100 Cattle in Japan)", page 169.*

The Okudoi cattle of the Hyogo line was created in 1951 with the birth of **Okudoi**. He was the result of the successful mating of Tajiri with Asa. The Okudoi line has the reputation for producing highly marbled, consistent quality beef. They are usually smaller in size to other Hyogo-line cattle.

## THE FOUNDATION

The breeding of our Okudoi line was created from **Kinu 1**, the result of **Kinu** (the only 100% Tajima cow of Okudoi strain (Yoshi line) to be exported from Japan) and **Kikuyasudoi**.

The Kikuyasudoi line (originated in 1977), is the one which shows some of the most typical features of the Hyogo line. The Kikuterudoi line (originated in 1973) show characteristics of good meat colour and cows with good nursing and milking ability. One of the most successful bulls of this line is **Terungadoi**.

*Ono, Kenichi. "Nihon Meigy Hyakusen (Top 100 Cattle in Japan)", page 169.*

**Kinu** was born in Tantau-cho in Hyogo Prefecture in 1976. At six months of age she was designated as the best foundation stock and taking her outside of Hyogo Prefecture was banned. In 1992, Takeda Farms purchased a pregnant **Kinu** at 16 years of age, the calf being **Kinu 1**.

Our foundation Kinu family cow is **Blackmore Kinu T077**, who was bred as a result of a half-brother/sister mating that were both sired by **Kikuyasudoi**. This gave the perfect platform to create our two Kinu family bloodlines; Kikumidoi line and Yasumidoi line.

## BLACKMORE KINU FAMILY

This is one of the most important and unique cow families we have developed. We identified **Kinu 1** as a cow of unique breeding, being the only known 100% Tajima cow, and the only Okudoi bloodline to have been exported from Japan. We set out to keep the Tajima bloodline pure, which is 100% Tajima.

We firstly created two separate bloodlines, so as we identified the best animals, we could cross the two bloodlines without fear of inbreeding. We have the **Kikumidoi** line (foundation cow **Blackmore Kinu Y385**) and **Yasumidoi** line (foundation cow **Blackmore Kinu Y200**).

We then introduced the three grandsons of **Kikutsuru** into the Kinu family with spectacular results. **Kikutsuru** was originally thought to breed best with Kikumidoi blood, but later in life her two best sons were bred from **Yasumidoi** sons.

Our Kinu family does not need to be a big family in numbers, as our primary use is to breed sons either as sires of our next generation of sires, or to use them as terminal sires to breed our fullblood carcasses.



KINU Y200



KINU Y385



**TAKEDA FARM CO., LTD.**  
1-6-13 Sakae-machi Shiraai-cho Shiraai-gun Hokkaido Japan 059-09  
TEL.0144-82-5710 FAX.0144-82-5710

February 24, 1999

To Whom it May Concern,

I would like to thank you for purchasing a TF KINU 1 daughter.  
( I, Shogo Takeda, confirm that KINU 1 is a full blood TAJIMA Wagyu )

Her grandmother of dam side, KINU was born in Tantau-cho ( town ) in Hyogo prefecture in 1976. At 6 months of age, KINU was designated as the best foundation stock, and taking KINU outside of Hyogo prefecture was banned.

The Wagyu bred in Hyogo prefecture are called TAJIMA, and there are three lines:  
NAKADOI , OKUDOI , KUMANAMI.

KINU is OKUDOI line. Although the OKUDOI line is small in size, it produces high marbling.

In 1992, I purchased KINU, which was then pregnant at 16 years of age. The calf of KINU is KINU 1.

The sire of KINU 1 is KIKUYASU DOI, which produces extremely good marbling.

武田正吾

## THE PROVEN RESULTS

After the successful carcass results of **Blackmore Kinuyasudoi Y350** (full brother to **Blackmore Kinu Y385**) and **Blackmore Kikutsurudoi W628** (full brother to **Blackmore Kinu Y200**), and the consistent breeding ability of **Blackmore Kinu Y385** and **Blackmore Kinu Y200**, we bred both cows to **Itozurudoi 151**.

We have bred numerous females from both cows, but only one son from **Blackmore Kinu Y385**, **Blackmore Kinzuru E006**. The progeny of this family, known as Kinuko carry 75% Tajima bloodline. We believe this to be the ideal percentage to have in our main breeding herd to increase carcass size and weight, while maintaining consistent carcass quality.

The Kinu families have produced three superior proven breeding bulls to date; **Blackmore Kinuyasudoi Y350**, **Blackmore Kinzuru E006** and **Blackmore Kinusurukiku H224**).

No embryos are sold from this family but semen from sons is now available.

# THE POWER OF THE KINU FAMILY

KINU Y385



## MORE THAN JUST MARBLING

These bloodlines are producing outstanding carcasses that go beyond marbling alone. The marbling, meat colour and fat colour all combine together to offer a beautiful piece of meat.

The flavour is accentuated through a feeding process that uses natural ingredients to achieve the perfect flavour balance between sweetness and richness.

The proportion of eye muscle size to carcass weight ensures an incredibly high meat yield. The live weight to carcass weight of over 60% (most beef breeds are around 53-54%) shows the unique physical efficiency of this bloodline.

### BLACKMORE KINUYASUDOI Y350

TAGID	BREED	SEX	DOB	COLOUR	INDENT	DNA	LINE
Y350	100% FB	MALE	14-MAY-2003	BLACK	BYWIFY0350	61282	100% TAJIMA



**Kinuyasudoι Y350's** paternal heritage is from the Kikumidoι and Yasutanidoι bloodlines, who are known to improve weight, increase marbling and daily gain.

His dam **Blackmore Kinu T077** is our Kinu family foundation cow, descendant of **Kinu 1**.

Progeny from this combination have exhibited good strength, depth of rib, excellent maternal traits, large eye muscle, very little seam fat, and finely dispersed marbling throughout the muscle and body.

Sire: **Kikateruyasudoι 003** Dam: **Blackmore Kinu T077**



CARCASS BY

**Blackmore Kinuyasudoι Y350**



### BLACKMORE KINUSURU E006

TAGID	BREED	SEX	DOB	COLOUR	INDENT	DNA	LINE
E006	100% FB	MALE	09-JAN-2009	BLACK	BYWFE0006	187187	75% TAJIMA



**Kinuzuru E006's** parental combination of the famous sire **Itozurudoι 151** and the Nakadoι line of the Tajima strain has resulted in a large bull with deep heart room, good spring and depth of rib.

His dam, **Blackmore Kinu Y385** is a large cow and a descendant of **Kinu 1**.

Progeny from this combination increases overall body size, while also increasing the eye muscle area and the fineness and even distribution of marbling throughout the carcass. The growth in his progeny on feed is excellent.

Sire: **Itozurudoι 151** Dam: **Blackmore Kinu Y385**



CARCASS BY

**Blackmore Kinusuru E006**



# BLACKMORE KIKUSURUKIKU H224

## 100% TAJIMA BLOODLINE BULL

Kinusurukiku H224's lightly used sire, Kitatsurukikudo 007 is line bred to the famous "Hyogo Cow" Kikutsuru recognised as the cow that had the single most influence in increasing size and carcass quality in Tajima bloodlines.

Kinusurukiku H224's dam Blackmore Kinu Y385 is the best 100% Tajima cow (from our exclusive Kinu family) we have bred. Blackmore Kinu Y385 is Kikumidoi blood, making this an ideal cross with Kitatsurukikudo 007 (Yasumidoi blood) to maintain size and increase carcass quality.

Note the data showing the carcass quality and weights bred from Blackmore Kinu Y385. Kinusurukiku H224 is a large bull, with exceptional muscling, is very quiet and has excellent semen fertility.



KIKUSURUKIKU H224

## SPECIFICATIONS

TAGID	BREED	SEX	DOB	WEIGHT	INDENT	DNA	LINE
H224	100% FB	MALE	27-APR-2012	917 KG	BYWFH0244	340519	100% TAJIMA



KITATERUYASUDO 003



KINU Y385

## PERFORMANCE



ID	DOF	ADG	HSCW	MS	REA	DENT	P8 FAT	RIB FAT	MEAT COLOUR	FAT COLOUR
K1015	666	0.71 kgs	457.5 kgs	9+	128	4	13	11	1C	0

## PEDIGREE

Sire:

**KITATSURUKIKUDO 007**

DG 0.89

100% (MS 9) 1/1

100% (MS 9+) 1/1

97.0 REA

**Dai 2 Yasutsurudo**

+3.3 BMS

**Kikutsuru 3**

**Tayasudo**

DG 0.75 +2.8 BMS 50 REA

**Fukumusume**

DG 0.75 +4.1 BMS 50 REA

**Kikumidoi**

**Kikutsuru**

"the Hyogo cow"

**Syofuku 3**

**Kikunoridoi**

**Kikuterudo**

**Tokukane**

**Kikuyasudo**

DG 0.80 +4.3 BMS

**Tsuruhime**

**Fujihime 5**

Dam:

**B KINU Y385**

HSCW MS REA

442 kgs 9+ 105

470 kgs 9+ 116

527 kgs 9+ 107

**Kitateruyasudo ETJ003**

DG 0.65

98.04% (MS 9) 49/51

94.12% (MS 9+) 43/51

99.25 REA

**B Kinu T077**

HSCW MS REA

368 kgs 8 84

451 kgs 9+ 110

470 kgs 9+ 100

430 kgs 9+ 100

433 kgs 9+ 100

**Kikuterudo**

+4.1 BMS

**Terunagadoi**

DG 0.74 +3.0 BMS

**Terunaho**

**Yashimidoi**

DG 0.80 +4.3 BMS

**Yoshimi 3**

**Yoshimi**

**Kikuyasudo**

+4.2 BMS

**Kikuyasu 400**

DG 0.70 81.5 REA

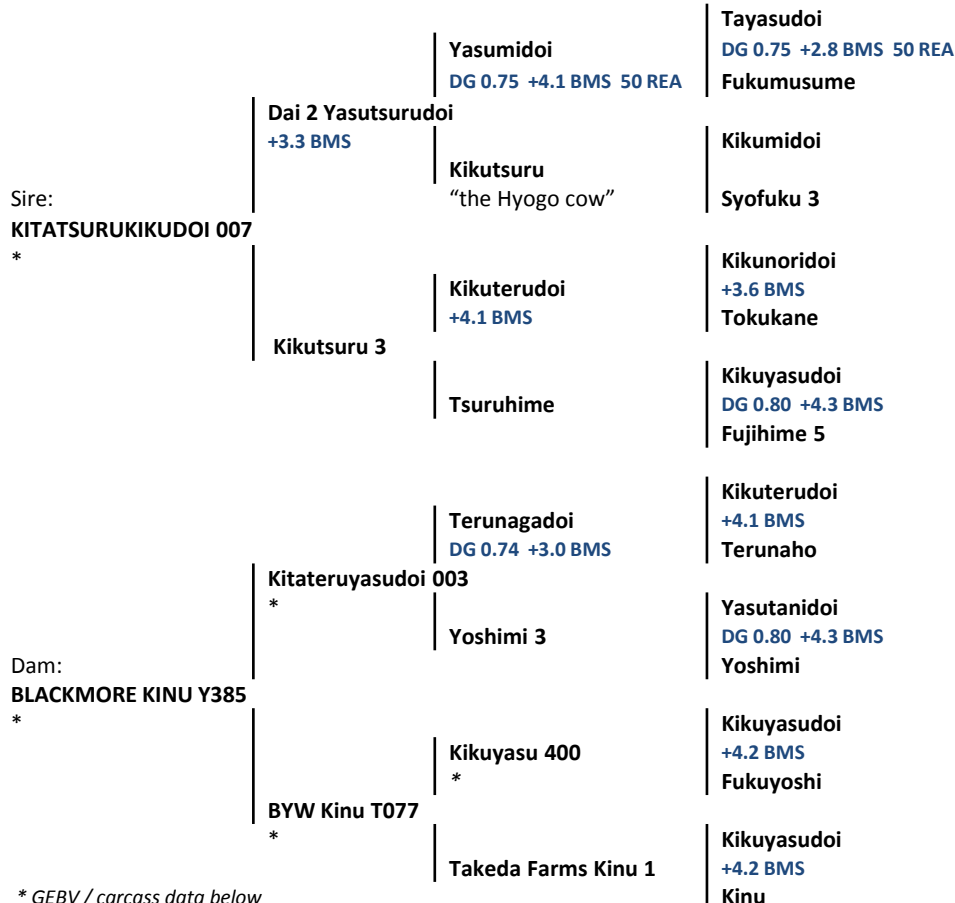
**Fukuyoshi**

**Kikuyasudo**

+4.2 BMS

**TF Kinu 1**

**Kinu**



\* GEBV / carcass data below

2021 BLACKMORE GEBV						
GEBV	EMA	FC	HCW	MS	P8 FAT	RIB FAT
<b>HERD AV.</b>	89.40	1.07	415.40	9.15	18.02	20.12
<b>H224</b>	+7.0	-0.15	-13.72	+1.78	-6.34	-1.00
<b>ACCURACY</b>	96%	90%	93%	96%	95%	94%

## PEDIGREE PERFORMANCE

ID		EMA	FC	HCW	MS	P8 FAT	RIB FAT	HERD CARCASS DATA
		GEBV	+2.61	-0.06	-16.83	+0.79	-2.50	-0.03
	ACC.	85%	76%	79%	86%	84%	81%	
Y385		EMA	FC	HCW	MS	P8 FAT	RIB FAT	HERD CARCASS DATA
		GEBV	+4.43	-0.09	-6.86	+0.96	-3.60	-0.21
	ACC.	89%	83%	85%	90%	89%	86%	
003		EMA	FC	HCW	MS	P8 FAT	RIB FAT	HERD CARCASS DATA
		GEBV	+1.5	+0.05	-10.01	+0.89	-3.24	+1.55
	ACC.	94%	87%	90%	95%	94%	91%	
T077		EMA	FC	HCW	MS	P8 FAT	RIB FAT	HERD CARCASS DATA
		GEBV	n/a	n/a	n/a	n/a	n/a	n/a
	ACC.	n/a	n/a	n/a	n/a	n/a	n/a	
400		EMA	FC	HCW	MS	P8 FAT	RIB FAT	HERD CARCASS DATA
		GEBV	-1.16	-0.04	+0.00	-1.38	+0.13	+1.49
	ACC.	90%	81%	85%	91%	89%	86%	

The Genomic Estimated Breeding Values (GEBV) has been derived solely from the Blackmore Wagyu herd using; 10,903 genomic profiles imputed to 800K SNPs, five generation parent verified pedigrees and 5,345 full blood carcass results. The percentage accuracy of each GEBV is calculated from a combination of genomic markers, generation pedigree and carcass results.

The herd GEBV average is used to evaluate each animal by either adding or subtracting that animals' GEBV against the herd average. The Blackmore Wagyu herd average, based on the above combination, is EMA 89.40, FC 1.07, HCW 415.40, MS 9.15, P8 Fat 18.02, Rib Fat 20.12.

The 'blue text' within the pedigree is production results sourced from the Japanese progeny test program, the 'red text' is our GEBV (EMA, HCW, MS) and the Herd Carcass Data is the results from the Blackmore Wagyu production system.



TAG ID	BREED	SEX	DOB	WEIGHT	SOCIETY ID	DNA (MIP)
H224	100% FB	MALE	27-APR-2012	917 KG	BYWFH0244	340519
PV	IBC	B3	CHS	CL16-T1	F11	F13
Match	16.47%	F	F	F	F	F

Kinusurukiku H224's lightly used sire, Kitatsurukikudo 007 is line bred to the famous "Hyogo Cow" Kikutsuru recognised as the cow that had the single most influence in increasing size and carcass quality in Tajima bloodlines.

Kinusurukiku H224's dam Blackmore Kinu Y385 is the best 100% Tajima cow (from our exclusive Kinu family) we have bred. Blackmore Kinu Y385 is Kikumidoi blood, making this an ideal cross with Kitatsurukikudo 007 (Yasumidoi blood) to maintain size and increase carcass quality.

Kinusurukiku H224 is a large bull, with exceptional muscling, is very quiet and has excellent semen fertility. He is our highest living bull for marbling score and eye muscle area Genomics Estimated Breeding Values (GEBV). Note below the data showing the carcass quality and weights bred from Blackmore Kinu Y385.



KITATERUYASUDOI 003



KINU Y385



CARCASS BY H224



# BLACKMORE KINZURU E006

KINZURU E006



## 80% TAJIMA BLOODLINE BULL

Kinzuru E006's parental combination of the famous sire Itozurudo 151 and the Naki-doi line of the Tajima strain has resulted in a large bull with deep heart room, good spring and depth of rib.

E006's dam, Kinu Y385 is a large cow and a descendant of one of the only 100% Tajima cow's ever to leave Japan, Kinu 1. Note carcass data of her progeny.

Progeny from this combination increases overall body size, while also increasing the eye muscle area and the fineness and even distribution of marbling throughout the carcass. The growth in his progeny on feed is excellent.

Kinzuru E006 is the full brother to Blackmore Kinuko E010, who is the dam of Blackmore Kinuzurudo 1 K730. He is one of our superior proven breeding bulls from the Kinu family.

## PEDIGREE

Sire:

**ITOZURUDO 151**  
 DG 0.65  
 93.13% (MS 9) 298/320  
 84.69% (MS 9+) 271/320  
 99.25REA

**Itokitazura**  
 DG 0.90 +4.1 BMS

**Yasuhime**

**Dai 14 Shigeru**  
 DG 0.92 +2.5 BMS

**Dai 7 Itozakura**  
 DG 1.02 +3.4 BMS

**Dai 9 Itozakura**

**Kitakedaka**

**Nishizura**

**Higashizuru**

**Tayasudo**  
 DG 0.75 +2.8 BMS

**Yasumido**  
 +4.1 BMS

**Fukumusume**

**Kikuterudo**  
 +4.1 BMS

**Fujihime**  
 Fujihime 5

Dam:

**B KINU Y385**  
 HSCW MS REA  
 442 kgs 9+ 105  
 470 kgs 9+ 116  
 527 kgs 9+ 107

**Kitateruyasudo ETJ003**  
 DG 0.65  
 98.04% (MS 9) 49/51  
 94.12% (MS 9+) 43/51  
 99.25 REA

**B Kinu T077**  
 HSCW MS REA  
 368 kgs 8 84  
 451 kgs 9+ 110  
 470 kgs 9+ 100  
 430 kgs 9+ 100  
 433 kgs 9+ 100

**Kikuterudo**  
 +4.1 BMS

**Terunagado**  
 DG 0.74 +3.0 BMS

**Terunaho**

**Yasutanido**  
 DG 0.80 +4.3 BMS

**Yoshimi 3**  
 Yoshimi

**Kikuyasudo**  
 +4.2 BMS

**Kikuyasu 400**  
 DG 0.70 81.5 REA

**Fukuyoshi**

**Kikuyasudo**  
 +4.2 BMS

**TF Kinu 1**  
 Kinu

## SPECIFICATIONS

TAGID	BREED	SEX	DOB	COLOUR	INDENT	DNA	LINE
E006	100% FB	MALE	09-JAN-2009	BLACK	BYWFE0006	187187	80% TAJIMA



ITOZURUDO 151



KINU Y385

## PERFORMANCE



CARCASS BY

Blackmore Kinzuru E006

Sire:  
ITOURUDO I 151  
\*

Itokitazura  
DG 0.90 +4.1 BMS

Dai 7 Itozakura  
DG 1.02 +3.4 BMS

Dai 14 Shigeru  
DG 0.92 +2.5 BMS  
Dai 9 Itozakura

Nishizura

Kitakedaka  
Higashizuru

Yasuhime

Yasumidoi  
+4.1 BMS

Tayasudoi  
DG 0.75 +2.8 BMS  
Fukumusume

Fujihime

Kikuterudoi  
+4.1 BMS  
Fujihime 5

Terunagadoi  
DG 0.74 +3.0 BMS

Kikuterudoi  
+4.1 BMS  
Terunaho

Kitateruyasudoi 003  
\*

Yoshimi 3

Yasutanidoi  
DG 0.80 +4.3 BMS  
Yoshimi

Dam:  
BLACKMORE KINU Y385  
\*

BYW Kinu T077  
\*

Kikuyasu 400  
\*

Kikuyasudoi  
+4.2 BMS  
Fukuyoshi

TF Kinu 1

Kikuyasudoi  
+4.2 BMS  
Kinu

\* GEBV / carcass data below



TAG ID	BREED	SEX	DOB	WEIGHT	SOCIETY ID	DNA (SNP)
E006	100% FB	MALE	09-JAN-2009	1112 KG	BYWFE0006	317327
PV	IBC	B3	CHS	CL16-T1	F11	F13
Match	6.60%	-	-	-	-	-

Kinuzuru E006's parental combination of the famous sire Itozurudo I 151 and the Naki-doi line of the Tajima strain has resulted in a large bull with deep heart room, good spring and depth of rib.

Kinuzuru E006's dam, Blackmore Kinu Y385 is a large cow and a descendant of one of the only 100% Tajima cow's ever to leave Japan, Kinu 1. Note carcass data of her progeny.

Progeny from this combination increases overall body size, while also increasing the eye muscle area and the fineness and even distribution of marbling throughout the carcass. The growth in his progeny on feed is excellent.

Kinuzuru E006 is the full brother to Blackmore Kinuko E010, who is the dam of Blackmore Kinuzurudo I K730. He is one of our superior proven breeding bulls from the Kinu family.

2021 BLACKMORE GEBV						
GEBV	EMA	FC	HCW	MS	P8 FAT	RIB FAT
HERD AV.	89.40	1.07	415.40	9.15	18.02	20.12
E006	+3.83	-0.19	-2.35	+0.20	-7.05	-2.10
ACCURACY	98%	98%	98%	98%	98%	98%

## PEDIGREE PERFORMANCE

151		EMA	FC	HCW	MS	P8 FAT	RIB FAT	HERD CARCASS DATA
	GEBV	+1.04	-0.09	+6.90	+0.48	-0.50	+2.93	DG 0.65 93.13% (MS 9) 298/320 84.69% (MS 9+) 271/320 99.25 EMA
	ACC.	98%	94%	96%	98%	98%	97%	
Y385		EMA	FC	HCW	MS	P8 FAT	RIB FAT	HERD CARCASS DATA
	GEBV	+4.43	-0.09	-6.86	+0.96	-3.60	-0.21	HSCW MS EMA 442kgs 9+ 105 470kgs 9+ 116 527kgs 9+ 107
	ACC.	89%	83%	85%	90%	89%	86%	
003		EMA	FC	HCW	MS	P8 FAT	RIB FAT	HERD CARCASS DATA
	GEBV	+1.5	+0.05	-10.01	+0.89	-3.24	+1.55	DG 0.65 98.04% (MS 9) 49/51 94.12% (MS 9+) 43/51 99.25 EMA
	ACC.	94%	87%	90%	95%	94%	91%	
T077		EMA	FC	HCW	MS	P8 FAT	RIB FAT	HERD CARCASS DATA
	GEBV	n/a	n/a	n/a	n/a	n/a	n/a	DG 0.72 100% (MS 9) 5/5 100% (MS 9+) 5/5 97.40 EMA
	ACC.	n/a	n/a	n/a	n/a	n/a	n/a	
400		EMA	FC	HCW	MS	P8 FAT	RIB FAT	HERD CARCASS DATA
	GEBV	-1.16	-0.04	+0.00	-1.38	+0.13	+1.49	DG 0.70 81.50 EMA
	ACC.	90%	81%	85%	91%	89%	86%	



ITOURUDO I 151



KINU Y385



CARCASS BY E006

The Genomic Estimated Breeding Values (GEBV) has been derived solely from the Blackmore Wagyu herd using; 10,903 genomic profiles imputed to 800K SNPs, five generation parent verified pedigrees and 5,345 full blood carcass results. The percentage accuracy of each GEBV is calculated from a combination of genomic markers, generation pedigree and carcass results.

The herd GEBV average is used to evaluate each animal by either adding or subtracting that animals' GEBV against the herd average. The Blackmore Wagyu herd average, based on the above combination, is EMA 89.40, FC 1.07, HCW 415.40, MS 9.15, P8 Fat 18.02, Rib Fat 20.12.

The 'blue text' within the pedigree is production results sourced from the Japanese progeny test program, the 'red text' is our GEBV (EMA, HCW, MS) and the Herd Carcass Data is the results from the Blackmore Wagyu production system.

# BLACKMORE KINUYASUDOI Y350

## 100% TAJIMA BLOODLINE BULL

Kinuyasudoi Y350's paternal heritage is from the Kikumidoi and Yasutanidoi bloodlines, who are known to improve weight, increase marbling and daily gain.

Kinuyasudoi Y350's grand-dam Kinu 1, was the first 100% Tajima female to leave Japan. Her lineage is known for good meat qualities and nursing abilities.

Progeny from this combination have exhibited good strength, depth of rib, excellent maternal traits, large eye muscle, very little seam fat, and finely dispersed marbling throughout the muscle and body.

Kinuyasudoi Y350 is the full brother to Blackmore Kinu Y385 and is one of our superior proven breeding bulls from the Kinu family.



Stu Mackie

KINUYASUDOI Y350

## SPECIFICATIONS

TAGID	BREED	SEX	DOB	COLOUR	INDENT	DNA	LINE
Y350	100% FB	MALE	14-MAY-2003	BLACK	BYWFY0350	61282	100% TAJIMA



KIKATERUYASUDOI 003



KIKUYASU 400

## PERFORMANCE



CARCASS BY

Blackmore Kinuyasudoi Y350

## PEDIGREE

Sire:

**KIKATERUYASUDOI 003**

DG 0.72

96.08% (MS 9) 49/51

84.31% (MS 9+) 43/51

93.49 REA

**Terunagadoi**

DG 0.74 +3.0 BMS

**Yoshimi 3**

**Kikuterudoi**

DG 0.75 +4.1 BMS

**Terunaho**

**Yasutanidoi**

DG 0.80 +4.3 BMS

**Yoshimi**

**Kikunoridoi**

+3.6 BMS

**Tokukane**

**Yasumidoi**

DG 0.75 +4.1 BMS 50 REA

**Syofuku 3**

**Yasumidoi**

DG 0.75 +4.1 BMS 50 REA

**Itsumime**

**Kikuterudoi**

DG 0.75 +4.1 BMS

**Kumiko**

**Kikunoridoi**

+3.6 BMS

**Murayoshi**

**Kikuterudoi**

DG 0.75 +4.1 BMS

**Fukuuchiyoshi**

**Kikunoridoi**

+3.6 BMS

**Murayoshi**

**Shiroasa**

**Uta**

Dam:

**B KINU T077**

HSCW MS REA

368 kgs 8 84

451 kgs 9+ 110

470 kgs 9+ 100

430 kgs 9+ 100

433 kgs 9+ 100

**Kikuyasu 400**

DG 0.70

81.5 REA

**TF Kinu 1**

**Kikuyasudoi**

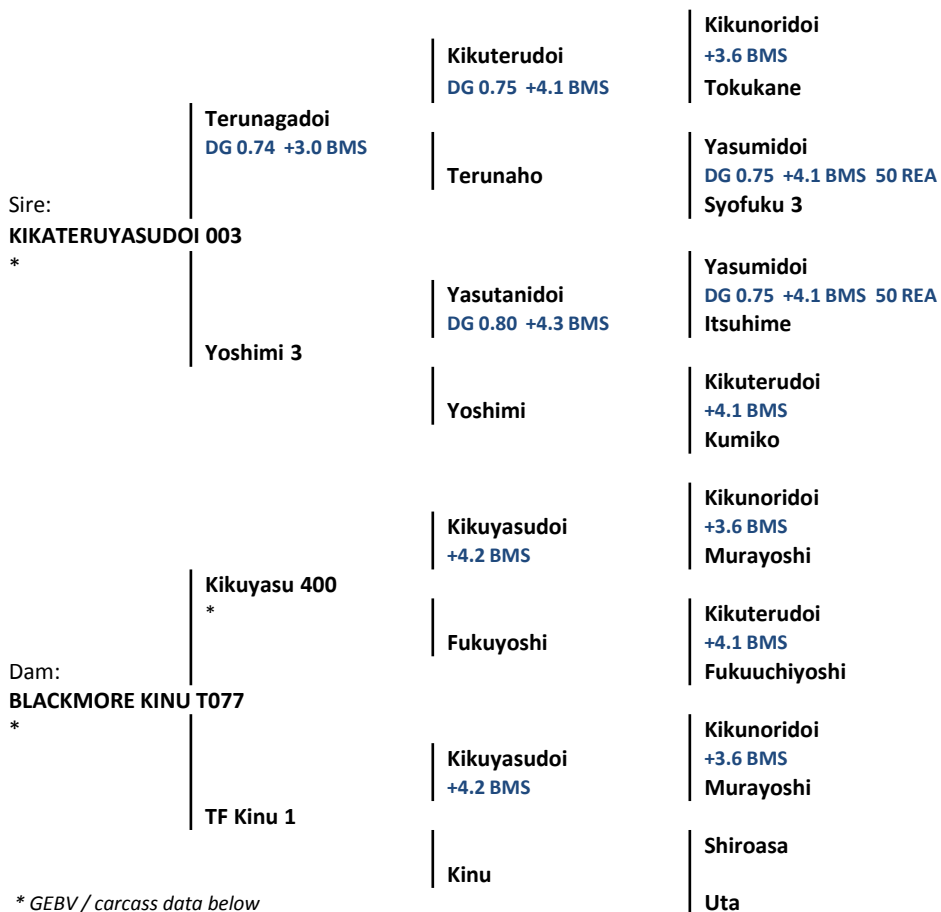
+4.2 BMS

**Fukuyoshi**

**Kikuyasudoi**

+4.2 BMS

**Kinu**



\* GEBV / carcass data below



TAG ID	BREED	SEX	DOB	WEIGHT	SOCIETY ID	DNA #
Y350	100% FB	MALE	14-MAY-2003	926 KG	BYWFY0350	61282

PV	IBC	B3	CHS	CL16-T1	F11	F13
Match	6.95%	F	F	F	C	F

Kinuyasudo Y350's sire Kikateruyasudo 003 was born in Japan. Kikateruyasudo's sire Terunagadoi, is one of the famed bulls of the Kikumidoi bloodline and is still in high demand in Japan. Kikateruyasudo is ideally bred with his dam sired by Yasutanidoi.

Yasutanidoi's bloodlines are known to improve weight, increased marbling and daily gain. These complement the good meat qualities and nursing abilities of the Kikumidoi blood.

Kinuyasudo Y350's dam Kinu 1 is the first 100% Tajima female to leave Japan. While this mating was selected to fix the Kikumidoi lines, the resultant progeny has surprised and delighted us. The females exhibit good strength, depth of rib, muscling with excellent maternal traits.

The full sibling carcasses to Kinuyasudo Y350 processed have been among the best we have had. They have exhibited large eye muscle, very little seam fat, finely dispersed marbling throughout the muscle and body including the round and topside. The carcasses are superior in all areas to that of his sire Kikateruyasudo ETJ 003.

2020 BLACKMORE GEBV						
GEBV	EMA	FC	HCW	MS	P8 FAT	RIB FAT
<b>HERD AV.</b>	90.3	1.0	419.1	9.2	18.3	20.2
<b>Y350</b>	+1.3	+0.0	-6.8	+1.0	-3.9	-1.2
<b>ACCURACY</b>	98%	95%	97%	98%	98%	96%

## PEDIGREE PERFORMANCE

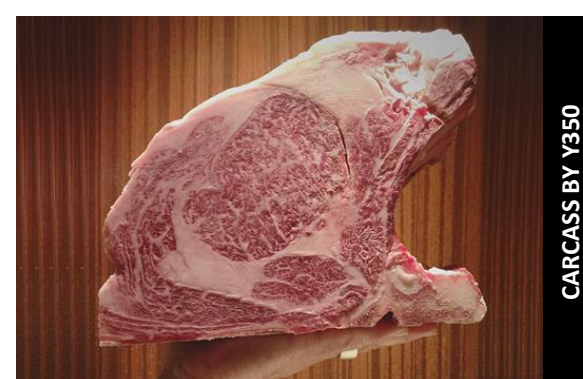
003		EMA	FC	HCW	MS	P8 FAT	RIB FAT	HERD CARCASS DATA
	GEBV	+1.1	+0.1	-7.3	+0.9	-2.8	+0.6	DG 0.65 98.04% (MS 9) 49/51 94.12% (MS 9+) 43/51 99.25 EMA
	ACC.	93%	86%	90%	94%	93%	89%	

T077		EMA	FC	HCW	MS	P8 FAT	RIB FAT	HERD CARCASS DATA
	GEBV	n/a	n/a	n/a	n/a	n/a	n/a	HSCW MS EMA 368 kgs 8 84 451 kgs 9+ 110 470 kgs 9+ 100
	ACC.	n/a	n/a	n/a	n/a	n/a	n/a	430 kgs 9+ 100 433 kgs 9+ 100

400		EMA	FC	HCW	MS	P8 FAT	RIB FAT	HERD CARCASS DATA
	GEBV	-0.7	-0.1	-0.5	-1.0	-0.2	-0.8	DG 0.70 81.50 EMA
	ACC.	87%	79%	82%	88%	86%	81%	



The Genomic Estimated Breeding Values (GEBV) has been derived solely from the Blackmore Wagyu herd using; 9,743 genomic profiles imputed to 800K SNPs, five generation parent verified pedigrees and 4,694 full blood carcass results. The percentage accuracy of each GEBV is calculated from a combination of genomic markers, generation pedigree and carcass results.

The herd GEBV average is used to evaluate each animal by either adding or subtracting that animals' GEBV against the herd average. The Blackmore Wagyu herd average, based on the above combination, is EMA 90.3, FC 1.0, HCW 419.1, MS 9.2, P8 Fat 18.3, Rib Fat 20.2.

The 'blue text' within the pedigree is production results sourced from the Japanese progeny test program, the 'red text' is our GEBV (EMA, HCW, MS) and the Herd Carcass Data is the results from the Blackmore Wagyu production system.

Sire: BLACKMORE KINUSURU F255 *	Kikutsurudo 146 <b>+0.80 -4.71 +0.05</b>	Tanifukudo DG 0.80 +4.1 BMS	Yasutanido DG 0.80 +4.3 BMS Fukumusume
	BYW Kinu Y385 *	Yasutsuru +4.3 BMS	Yasutanido DG 0.80 +4.3 BMS Kikutsuru 8
	BYW Kinu T077	Kitateruyasudo 003 <b>+1.15 -10.01 +0.89</b>	Shigeshigenmai Fukuyuki
	Kitatsurukikudo 007 *	Dai 2 Yasutsurudo +3.3 BMS	Kikuyasu 400 <b>-0.16 +0.00 -1.38</b> TF Kinu 1
Dam: BLACKMORE KINU F303 *	BYW Kinu A249 *	Kikutsuru 3	Yasumido DG 0.75 +4.1 BMS 50 REA Kikutsuru
	Fukutsuru 068 <b>-0.52 -16.47 -0.21</b>	Dai 2 Yasutsurudo +3.3 BMS Teruyasu	Kikuterudo +4.3 BMS Tsuruhime
	BYW Kinu Y200 <b>+6.14 -11.13 +1.55</b>	Kikutsurudo 146 <b>+0.80 -4.71 +0.05</b> BYW Kinu T077	Dai 2 Yasutsurudo +3.3 BMS

\* GEBV / carcass data below

2021 BLACKMORE GEBV						
GEBV	EMA	FC	HCW	MS	P8 FAT	RIB FAT
HERD AV.	89.40	1.07	415.40	9.15	18.02	20.12
J455	+1.01	-0.04	-16.06	+0.50	-1.39	+2.63
ACCURACY	92%	81%	87%	92%	92%	87%

## PEDIGREE PERFORMANCE

F255		EMA	FC	HCW	MS	P8 FAT	RIB FAT	HERD CARCASS DATA
	GEBV	+1.08	-0.08	-11.48	+0.59	-3.13	+1.09	N/A
ACC.	89%	81%	85%	90%	88%	86%		
F303		EMA	FC	HCW	MS	P8 FAT	RIB FAT	HERD CARCASS DATA
	GEBV	+2.51	-0.01	-18.86	+0.64	-0.03	+1.91	HSCW 394kgs MS 9+ EMA 85
ACC.	86%	76%	81%	87%	86%	82%		
Y385		EMA	FC	HCW	MS	P8 FAT	RIB FAT	HERD CARCASS DATA
	GEBV	+4.43	-0.09	-6.86	+0.96	-3.60	-0.21	HSCW 442kgs MS 9+ EMA 105
ACC.	89%	83%	85%	90%	89%	86%	470kgs 9+ 116 527kgs 9+ 107	
007		EMA	FC	HCW	MS	P8 FAT	RIB FAT	HERD CARCASS DATA
	GEBV	+2.61	-0.06	-16.83	+0.79	-2.50	-0.03	DG 0.89 100% (MS 9) 1/1 100% (MS 9+) 1/1 97.0 EMA
ACC.	85%	76%	79%	86%	84%	81%		
A249		EMA	FC	HCW	MS	P8 FAT	RIB FAT	HERD CARCASS DATA
	GEBV	+1.43	-0.02	-14.87	+0.33	+0.54	+2.13	HSCW 412kgs MS 9+ EMA 97
ACC.	88%	78%	82%	89%	87%	84%	398kgs 9+ 89	

The Genomic Estimated Breeding Values (GEBV) has been derived solely from the Blackmore Wagyu herd using; 10,903 genomic profiles imputed to 800K SNPs, five generation parent verified pedigrees and 5,345 full blood carcass results. The percentage accuracy of each GEBV is calculated from a combination of genomic markers, generation pedigree and carcass results.

The herd GEBV average is used to evaluate each animal by either adding or subtracting that animals' GEBV against the herd average. The Blackmore Wagyu herd average, based on the above combination, is EMA 89.40, FC 1.07, HCW 415.40, MS 9.15, P8 Fat 18.02, Rib Fat 20.12.

The 'blue text' within the pedigree is production results sourced from the Japanese progeny test program, the 'red text' is our GEBV (EMA, HCW, MS) and the Herd Carcass Data is the results from the Blackmore Wagyu production system.



TAG ID	BREED	SEX	DOB	WEIGHT	SOCIETY ID	DNA (SNP)
J455	100% FB	MALE	07-SEP-2013	744 KG	BYWFJ0455	369061
PV	IBC	B3	CHS	CL16-T1	F11	F13
Match	8.86%	F	F	F	F	F

Kizashi J455 is a 100% Tajima bloodline bull. Tajima breeding consists of three bloodlines; Nakadoi, the foundation bull born in 1910, Okudo (born in 1951), and Nami, an off shoot branch (born in 1943). He is a direct descendant of Nakadoi, through 16 generations of "uncontaminated" breeding.

Kizashi J455's pedigree combines all three grandsons of Kikutsuru "the Hyogo cow", with Kikatsurukikudo 007, Fukutsuru 068 and Kikutsurudo 146 featured twice. The preponderance of the Tajima bloodline is enhanced with the combination of our two lines (Kikumidoi and Yasumidoi) from our 100% Tajima bloodline Kinu family.

He is a direct descendant of Kinu 1, the only 100% pure Tajima female, and the only Okudo bloodline animal (through 8 generations) to be ever exported from Japan. Kizashi J455 is a bull for the purest.



F255



KINU F303



CARCASS BY 146

Sire:	<b>BLACKMORE AIZATSURUDOI Y398</b>	<b>Fukutsuru 068</b> -0.52 -16.47 -0.21	<b>Dai 2 Yasutsurudo</b> +3.3 BMS	<b>Yasumidoi</b> +4.1 BMS
	*	<b>BYW Aizakura U100</b>	<b>Teruyasu</b>	<b>Kikutsuru</b> "the Hyogo cow" <b>Kikuterudo</b> DG 0.75 +4.1 BMS <b>Yasutsuru</b>
Dam:	<b>BLACKMORE KINUKO E010</b>	<b>Itokitazura</b> DG 0.90 +4.1 BMS	<b>Kikutsurudo 146</b> +0.80 -4.71 +0.05	<b>Tanifukudo</b> DG 0.80 +4.1 BMS <b>Yasutsuru</b>
	*	<b>BYW Kinu Y385</b>	<b>Aizakura 8</b>	<b>Itomichi</b> DG 0.86 +2.7 BMS 50.5 REA <b>Aizakura 7</b>
		<b>Yasuhime</b>	<b>Dai 7 Itozakura</b> DG 1.02 +3.4 BMS <b>Nishizura</b>	<b>Yasumidoi</b> +4.1 BMS <b>Fujihime</b>
		<b>Kitateruyasudo 003</b> +1.15 -10.01 +0.89	<b>Shigeshigenmai</b>	<b>Fukuyuki</b>
		<b>BYW Kinu T077</b>	<b>Kikuyasu 400</b> -0.16 +0.00 -1.38 <b>TF Kinu 1</b>	

\* GEBV / carcass data below

2021 BLACKMORE GEBV						
GEBV	EMA	FC	HCW	MS	P8 FAT	RIB FAT
<b>HERD AV.</b>	89.40	1.07	415.40	9.15	18.02	20.12
<b>K730</b>	-0.24	+0.00	+3.90	+0.35	-0.79	+4.05
<b>ACCURACY</b>	92%	83%	87%	93%	91%	88%

## PEDIGREE PERFORMANCE

ID		EMA	FC	HCW	MS	P8 FAT	RIB FAT	HERD CARCASS DATA
		GEBV	-2.65	+0.10	-5.15	+0.56	-3.67	+3.16
	ACC.	98%	97%	98%	98%	98%	98%	
E010		EMA	FC	HCW	MS	P8 FAT	RIB FAT	HERD CARCASS DATA
		GEBV	-0.96	-0.10	-0.62	+0.27	-2.26	+2.44
	ACC.	92%	84%	87%	92%	91%	88%	
U100		EMA	FC	HCW	MS	P8 FAT	RIB FAT	HERD CARCASS DATA
		GEBV	-5.19	-0.08	-0.01	-0.34	-2.91	+1.75
	ACC.	96%	90%	92%	96%	95%	93%	
151		EMA	FC	HCW	MS	P8 FAT	RIB FAT	HERD CARCASS DATA
		GEBV	+1.04	-0.09	+6.90	+0.48	-0.50	+2.93
	ACC.	98%	94%	96%	98%	98%	97%	
Y385		EMA	FC	HCW	MS	P8 FAT	RIB FAT	HERD CARCASS DATA
		GEBV	+4.43	-0.09	-6.86	+0.96	-3.60	-0.21
	ACC.	89%	83%	85%	90%	89%	86%	

The Genomic Estimated Breeding Values (GEBV) has been derived solely from the Blackmore Wagyu herd using; 10,903 genomic profiles imputed to 800K SNPs, five generation parent verified pedigrees and 5,345 full blood carcass results. The percentage accuracy of each GEBV is calculated from a combination of genomic markers, generation pedigree and carcass results.

The herd GEBV average is used to evaluate each animal by either adding or subtracting that animals' GEBV against the herd average. The Blackmore Wagyu herd average, based on the above combination, is EMA 89.40, FC 1.07, HCW 415.40, MS 9.15, P8 Fat 18.02, Rib Fat 20.12.

The 'blue text' within the pedigree is production results sourced from the Japanese progeny test program, the 'red text' is our GEBV (EMA, HCW, MS) and the Herd Carcass Data is the results from the Blackmore Wagyu production system.



TAG ID	BREED	SEX	DOB	WEIGHT	SOCIETY ID	DNA (SNP)
K730	100% FB	MALE	24-OCT-2014	1043 KG	BYWFK0730	K730-AV
PV	IBC	B3	CHS	CL16-T1	F11	F13
Match	4.85%	-	-	-	-	-

Kinuzurudo K730 is the pinnacle of the Blackmore Wagyu breeding program.

Kinuzurudo K730 is sired by Aizatsurudo Y398, our first "super" proven bull, who in turn is a son of our best ever matron Aizakura U100 (over 3,000 descendants born on farm). Aizatsurudo Y398 is line bred to Japan's most famous cow, Kikutsuru "the Hyogo Cow", through Fukutsuru 068 and Kikutsurudo 146.

Kinuzurudo K730's dam, Kinuko E010, is a full sister to our second "super" proven bull, Kinuzuru E006. Kinuko E010's dam, Kinu Y385 is one of our best proven bull mothers.

Kinuzurudo K730 is a combination of two of our most prolific breeding cow families, backed by generations of accurate carcass records, and the latest scientific analysis from genomic research.



AIZATSURUDO Y398



KINUKO E010



CARCASS BY Y398

