



CONCEPTION ET FABRICATION D'INNOVATION MECANIQUE

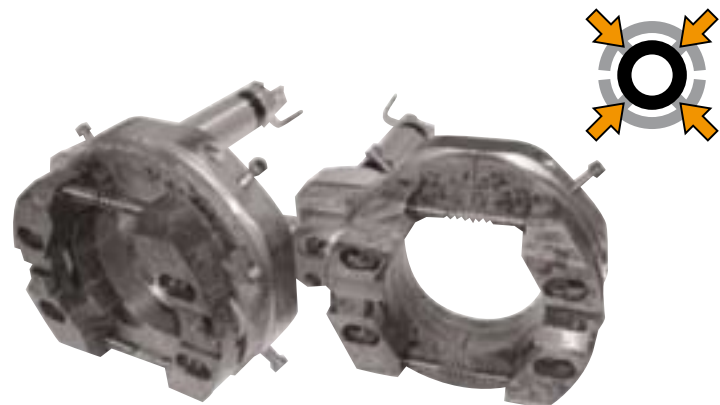
## CTO SERIES CUTTING & BEVELING MACHINES

### ■ CTO 1" to 6"

Their compact design and low radial clearance makes the CTO an ideal tool for in-line pipe cutting. The CTO machines are fast, reliable, and precise. Machining is performed with HSS tool bit.

Electric or Pneumatic driven

- Tool holder 25 mm stroke
- Clutch system does not need adjustment
- Feed in two directions
- Progressive feed adjustment
- Easy tool bit loading
- Hand feeding system



### ■ CTO 6" to 55" SPLIT FRAME MACHINE

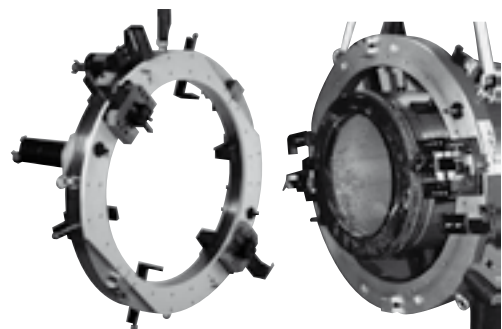
- Machine robust
- Perpendicular cut
- Clutch system does not need adjustment
- Feed in two directions
- Progressive feed adjustment
- Easy tool bit loading
- Hand feeding system
- 45 mm stroke / 80 mm stroke / 110 mm stroke
- Able to machine thick wall up to 110 mm
- Cut and bevel simultaneously up to 60 mm
- Internal bevel or machining with accessory
- Easy perpendicular set up
- Clamping set with ruler



### ■ CTO HYDRAULIC or PNEUMATIC DRIVEN

POWER UNIT from  
5.5Kw-22KW

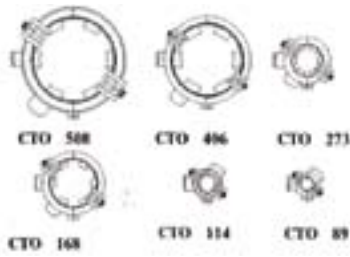
1 or 2 motors  
2 HP



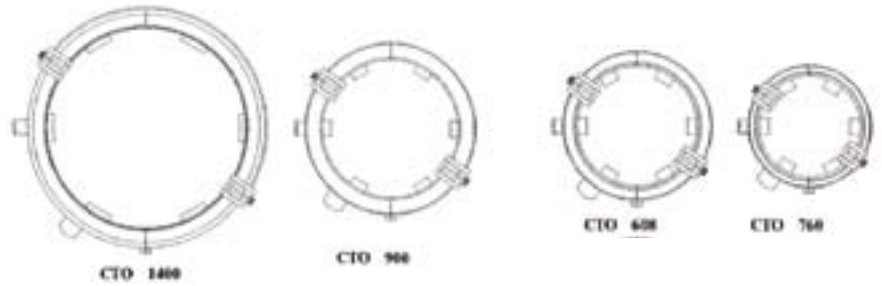
**Included:** The machine ; The clamping set ; 2 tool bits ; 2 tool holders ; Clutch system ; Motordrive ; Transport box ; Tooling for set up ; Hand book

# Easy Cut & Bevel

## ■ CTO 1" to 6"

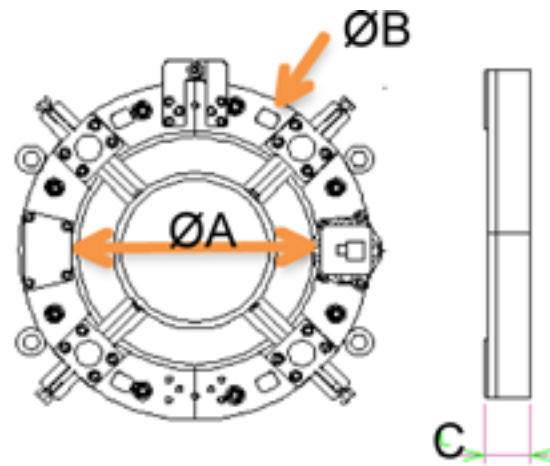


## ■ CTO 6" to 55"



## ■ OPTIONS

- Carbide insert
- Counterboring tool
- ID tracker
- Tool holder stroke  
110mm / 80 mm
- Electric drive
- Stainless steel contact
- Low clearance clutch system
  
- OD tracker
- Bevel copying carriage
- ID counter boring carriage



MACHINE	CTO89	CTO114	CTO168	CTO273	CTO406	CTO508	CTO610	CTO760	CTO910	CTO1400
Ø RANGE	1" - 3"	2" - 4"	4" - 6"	6" - 10"	10" - 16"	16" - 20"	18" - 24"	20" - 30"	30" - 36"	30" - 55"
A mm	68	130	200	300	416	520	625	775	930	1430
B mm	148	230	370	480	670	766	900	1027	1200	1700
C mm	65	75	84	84	84	84	104	104	104	104
Power*	680W	740W	740W	740W	2 KW	2KW	2KW	4KW	4KW	4KW
Weight* kg	16	15	20	38	80	100	130	160	195	240

\*Can be modified