



Aria Partitions
Color/Texture: Mahogany, Orange Peel

- BATHROOM PARTITIONS
- LOCKERS
- PRIVACY & HEALTH BARRIERS
- LOCKER ROOM BENCHES
- CUBBIES
- SHOWER CUBICLES
- DRESSING COMPARTMENTS
- VANITIES

WE DON'T JUST TALK TOUGH.
WE BACK IT UP.

Just as there's no limit to the toughness of Scranton Products bathroom partitions, now there's no limit to color choices either. Look inside and see which of our many style options best fits your project. Scranton Products offers a wide array of colors and textures.

Call 800.445.5148 for the Scranton Products sales representative in your area, or visit ScrantonProducts.com.



WARM TONE
COLOR COLLECTION



MAHOGANY **OP**
AVAILABLE IN: Standard



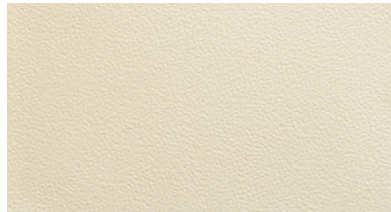
SANDSTONE **OP**
AVAILABLE IN: Standard



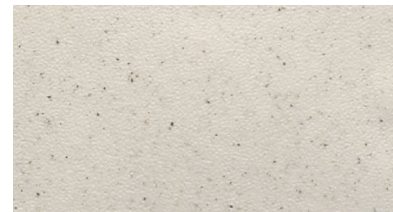
CONCRETE **OP**
AVAILABLE IN: Standard



DESERT BEIGE **OP**
AVAILABLE IN: Standard, Fire Rated (Class B, Class A NFPA 286)



LINEN **OP**
AVAILABLE IN: Standard, Fire Rated (Class B, Class A NFPA 286)



SANDCASTLE **OP**
AVAILABLE IN: Standard



MOCHA **OP**
AVAILABLE IN: Standard, Fire Rated (Class B, Class A NFPA 286)



Scranton Products
801 E. Corey Street
Scranton, PA 18505
800.445.5148
Info@ScrantonProducts.com
www.ScrantonProducts.com

PARTITION
COLORS & TEXTURES



COLOR & TEXTURE OPTIONS

Eclipse Partitions
Color/Texture: White, Orange Peel

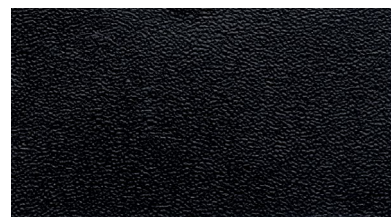


Aria Partitions
Color/Texture: Blueberry, Orange Peel



Hiny Hiders Partitions
Color/Texture: Bronze, Hammered

TRADITIONAL COLOR COLLECTION



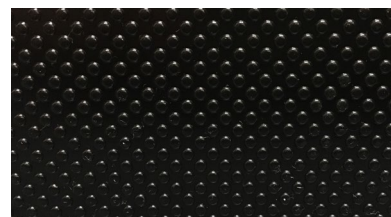
BLACK **OP**
AVAILABLE IN: Standard, Fire Rated
(Class B, Class A NFPA 286)



SHALE **OP**
AVAILABLE IN: Standard



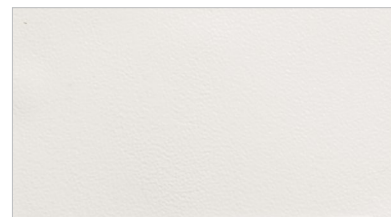
GLACIER GREY **OP**
AVAILABLE IN: Standard



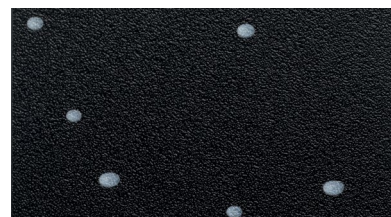
BLACK **EX**
AVAILABLE IN: Standard



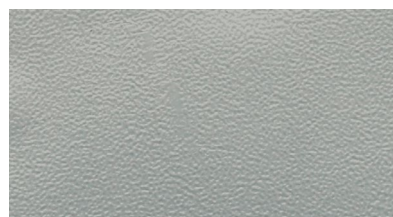
CHARCOAL GREY **OP**
AVAILABLE IN: Standard, Fire Rated
(Class B)



WHITE **OP**
AVAILABLE IN: Standard, Fire Rated
(Class B, Class A NFPA 286)



PAISLEY **OP**
AVAILABLE IN: Standard, Fire Rated
(Class B, Class A NFPA 286)



GREY **OP**
AVAILABLE IN: Standard, Fire Rated
(Class B, Class A NFPA 286)

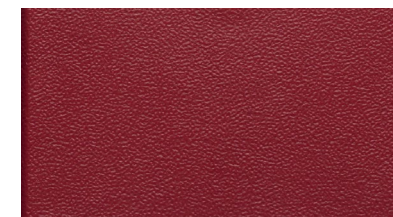
BOLD COLOR COLLECTION



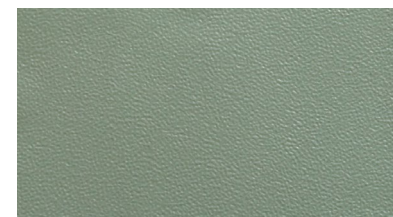
HUNTER GREEN **OP**
AVAILABLE IN: Standard



BLUEBERRY **OP**
AVAILABLE IN: Standard, Fire Rated
(Class B, Class A NFPA 286)



BURGUNDY **OP**
AVAILABLE IN: Standard

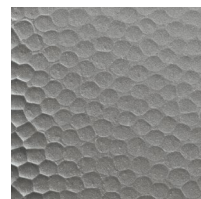


FOSSIL **OP**
AVAILABLE IN: Standard

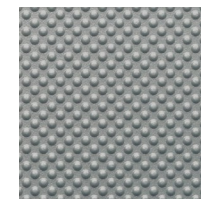


MIDNIGHT **OP**
AVAILABLE IN: Standard

TEXTURES LEGEND



HAMMERED **H**
Standard, Class B



GRIP EX **EX**
Standard,
Black & Stainless Only

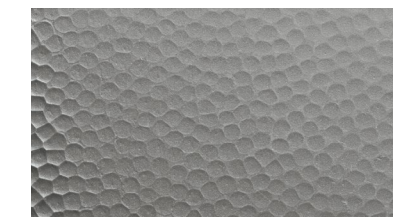


**ROTARY
BRUSHED** **RB**
Standard

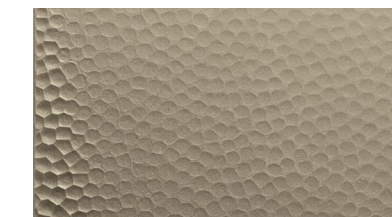


**ORANGE
PEEL** **OP**
Standard, Fire Rated
(Class B, Class A NFPA 286)

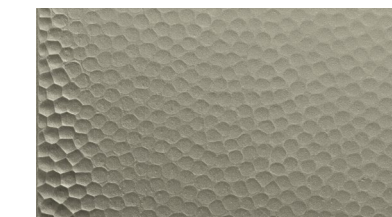
METALLIC COLOR COLLECTION



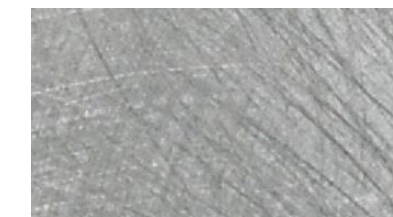
STAINLESS **H**
AVAILABLE IN: Standard, Fire Rated
(Class B)



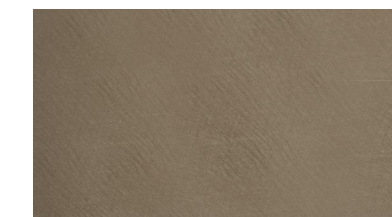
BRONZE **H**
AVAILABLE IN: Standard, Fire Rated
(Class B)



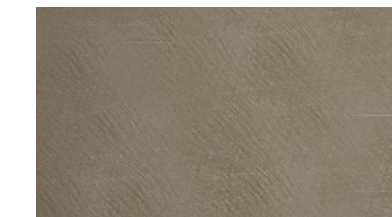
NICKEL **H**
AVAILABLE IN: Standard, Fire Rated
(Class B)



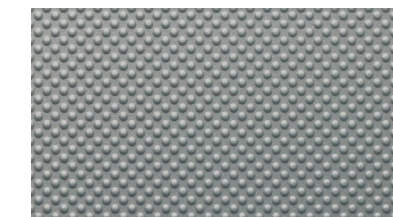
STAINLESS **RB**
AVAILABLE IN: Standard



BRONZE **RB**
AVAILABLE IN: Standard



NICKEL **RB**
AVAILABLE IN: Standard



STAINLESS **EX**
AVAILABLE IN: Standard

CUSTOM COLORS AVAILABLE UPON REQUEST

Color matching is limited by printing process. Actual samples are available and recommended prior to color selections.

*Minimum order requirements, lead-times & upcharges may all apply.