

**50158 Ehrenberg Poston Hwy, #F-6
Ehrenberg, AZ 85334**

\$139,000



Brought to you as a courtesy of:



Holley Land & Luxury Group
Long River Realty
Primary Phone: 928-208-3403
Office Phone: 928-877-0111
Cell Phone: 928-530-0347

holleylandluxurygroup@gmail.com



Location

MLS # 1030685
Major Area Ehrenberg Area
Subdivision N/A

Remarks

LEASED LAND Come see this completely remodeled Cavco with gated river access in The Palms at River Edge park. This home is clean, cute and ready for all your river adventures! This unit has all new: LVP flooring, paint, cabinets, quartz countertops, stainless appliances, bath vanity, windows, fixtures, lights, fans & window coverings. It has a boat deep carport that has sunshades for privacy on one side and a large gated covered deck on the other side. You will love the view from the front porch and from the deck. The fenced backyard also has a storage shed. Call

Rooms

Beds	2	BuildingAreaTotal	784.0	Lot Dim	50 X 90 approx
Total Baths	1.0	Year Built	1990	Lot SqFt	4500.0

Additional Info

Interior Features: Bedroom-Freestanding Closet • Breakfast Bar • Casual Dining • Ceiling Fan(s) • Counters-Solid Surface • Open Floorplan • Vaulted Ceiling • Window Coverings
Exterior Features: Deck • Landscape-Back Yard • Landscape-Front Yard • Patio Covered • Utility Building/Shed • Watering System

Green Features: Hard Surface Floors • Low-E Windows • Programmable Thermostat
Appliances/Equipment: Built in Microwave • Dryer-Electric • Gas Oven • Gas Range • Refrigerator • Washer • Water Heater-Elec • Water Softener-Rent to Lease

Information is deemed to be reliable, but is not guaranteed. © 2024 MLS and FBS. Prepared by Holley Land & Luxury Group on Wednesday, May 15, 2024 2:26PM.

Photos for MLS # 1030685 50158 Ehrenberg Poston Hwy #F-6, Ehrenberg, AZ 85334 \$139,000

palms-river-edge-aerial-1536x835



22



3



8



31



1



fenced in grassy area for pets

24



2



4



5



6



7



9



10



11



20240511_110134

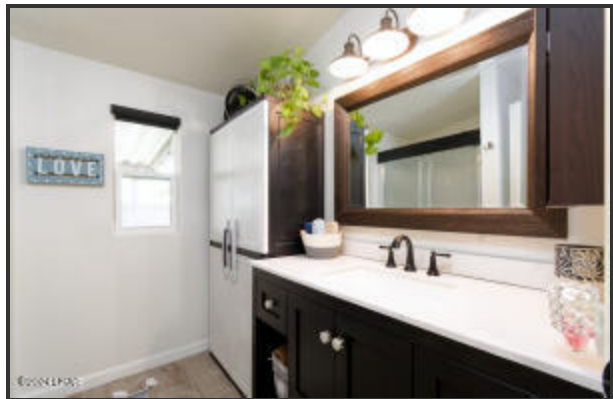


2nd bedroom, freestanding armoire

12

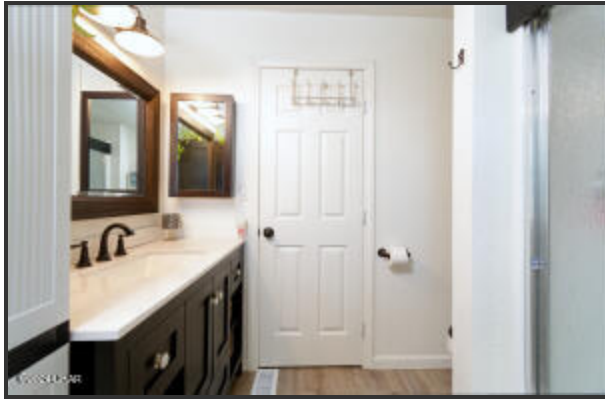


14



granite counter top

15

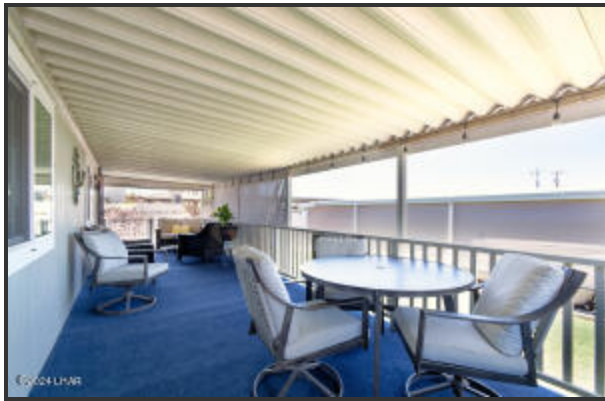


16



master bedroom

18



20



25



26



boat deep carport

27



grass area

28

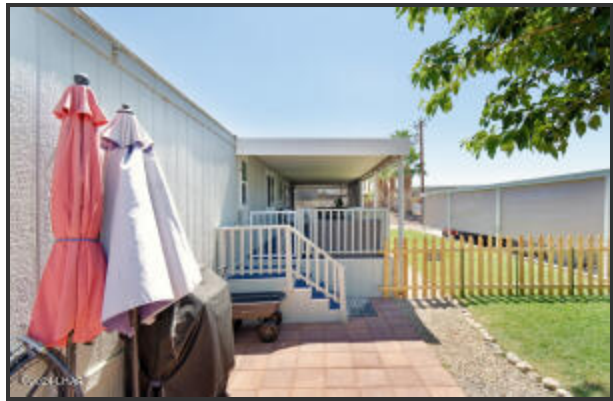


29



Mature shade tree

30



3L5A9623-300x300



community launch ramp

3L5A9701-300x300



clubhouse

playground-300x169



river side playground

20211020_093845-1536x1152

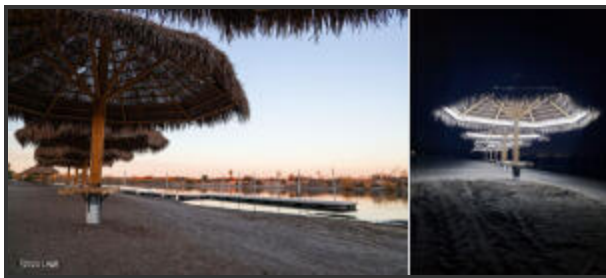


fitness center

20211020_093548-1536x1152



beach-palapas



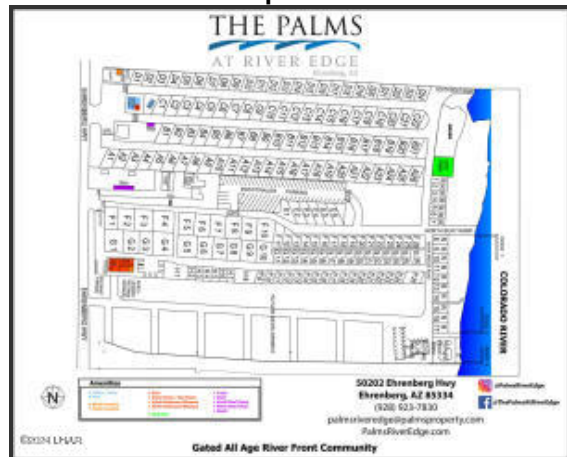
river side palapas

20211020_091745-1536x1152



courtesy/overnight docks

horizontal-map-2022-1536x1241



park map