

**50158 Ehrenberg Poston Hwy, G6
Ehrenberg, AZ 85334**

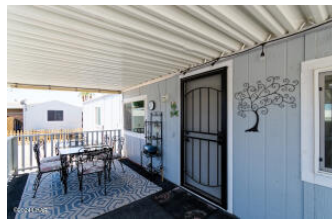
\$149,000



Brought to you as a courtesy of:



Holley Land & Luxury Group
Long River Realty
Primary Phone: 928-208-3403
Office Phone: 928-877-0111
Cell Phone: 928-530-0347
holleylandluxurygroup@gmail.com



Location

MLS # 1030639
Major Area Ehrenberg Area
Subdivision N/A

Remarks

ON LEASED LAND Check out this totally remodeled Cavco in the gated community of The Palms at River Edge! Owners gutted this in 2022 and made it like new with: drywall, paint, windows, trendy LVP flooring, kitchen island, cabinets, fixtures/fans, lights, added pantry, granite counter tops, subway tile backsplash, bath vanities, plumbing, water heater and showers. The stainless appliances including gas stove, built in microwave, refrigerator and washer & dryer. Water Park... best offered term/price on either side of the unit under the cement...

Rooms

Beds	2	BuildingAreaTotal	924.0	Lot Dim	50 X 90
Total Baths	2.0	Year Built	1981	Lot SqFt	4500.0

Additional Info

Interior Features: Casual Dining • Ceiling Fan(s) • Counters-Granite/Stone • Counters-Solid Surface • Kitchen Island • Open Floorplan • Pantry • Window Coverings
Exterior Features: Deck • Landscape-Back Yard • Landscape-Front Yard • Patio Covered • Utility Building/Shed

Green Features: Cool Roofs • Hard Surface Floors • Programmable Thermostat
Appliances/Equipment: Built in Microwave • Dryer-Electric • Gas Oven • Gas Range • Refrigerator • Washer • Water Heater-Elec

Information is deemed to be reliable, but is not guaranteed. © 2024 MLS and FBS. Prepared by Holley Land & Luxury Group on Wednesday, May 15, 2024 2:28PM.

Photos for MLS # 1030639 50158 Ehrenberg Poston Hwy G6, Ehrenberg, AZ 85334 \$149,000

20211020_091745-1536x1152



23



18



9



2



4



7



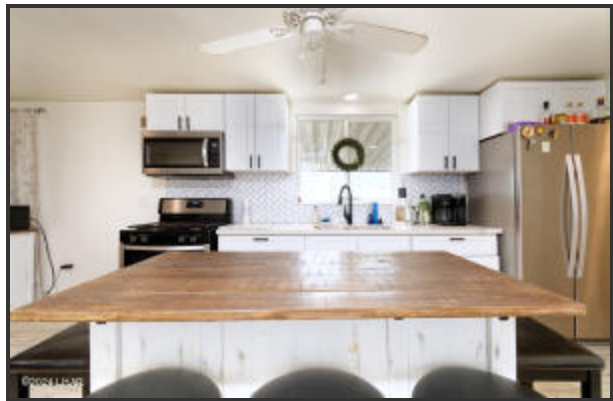
5



6



8



10



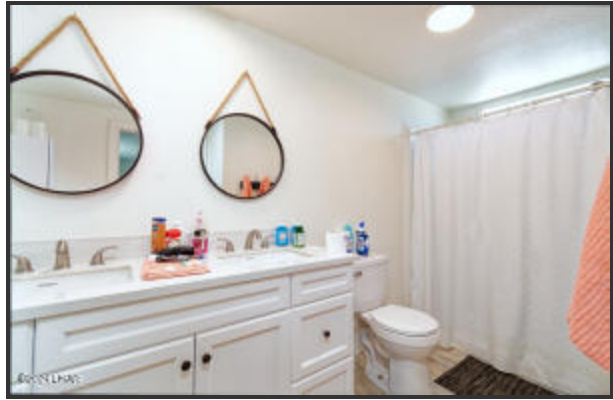
15



16



17



13



11



12



20



1



21



22



24



25



26



palms-river-edge-aerial-1536x835



3L5A9623-300x300



3L5A9701-300x300



playground-300x169



20211020_093845-1536x1152



20211020_093548-1536x1152



beach-palapas



horizontal-map-2022-1536x1241

