

**49688 Ruby Ave
Quartzsite, AZ 85346**

\$300,000

Brought to you as a courtesy of:



Holley Land & Luxury Group
Long River Realty
Primary Phone: 928-208-3403
Office Phone: 928-877-0111
Cell Phone: 928-530-0347
holleylandluxurygroup@gmail.com



Location

MLS # 1029911
Major Area Quartzsite Area
Subdivision Rainbow Acres

Remarks

This lovely, bright, well cared for home is ready to move right in! 3 BD/2 BA with split bedrooms and office/den/craft room has plenty of room for you and your guests. The open main area combines kitchen, dining and living room making it great for entertaining. The large open Kitchen has an island, loads of cabinets, Fridge, propane gas stove, dishwasher, and RO system. Many of the cabinets have roll out shelving for storage ease. Utility room off the kitchen has hookups for electric and propane. HVAC system is 2 years old. The stress entertaining needed

Rooms

Beds	3	BuildingAreaTotal	1568.0	Lot Dim	80 X 120
Total Baths	2.0	Year Built	2000	Lot SqFt	9670.0

Additional Info

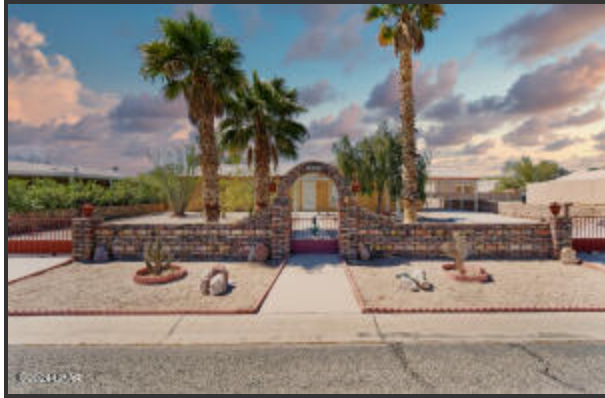
Interior Features: Casual Dining • Ceiling Fan(s) • Counters-Laminate • Counters-Solid Surface • Formal Dining Room • Garden Tub • Kitchen Island • Open Floorplan • Rear Kitchen • Vaulted Ceiling • Window Coverings

Exterior Features: Fruit Trees • Landscape-Back Yard • Landscape-Front Yard • Motor Home/RV Hookups • Patio

Covered • Utility Building/Shed • Watering System
Green Features: Desert LowWater Landscape • Programmable Thermostat
Appliances/Equipment: Built in Microwave • Dishwasher • Gas Oven • Gas Range • Refrigerator • RO System-Own • Water Heater-Propane

Information is deemed to be reliable, but is not guaranteed. © 2024 MLS and FBS. Prepared by Holley Land & Luxury Group on Wednesday, April 17, 2024 3:06PM.

Sunset



27



carport, removable to provide RV parking

1



2



3



4



5



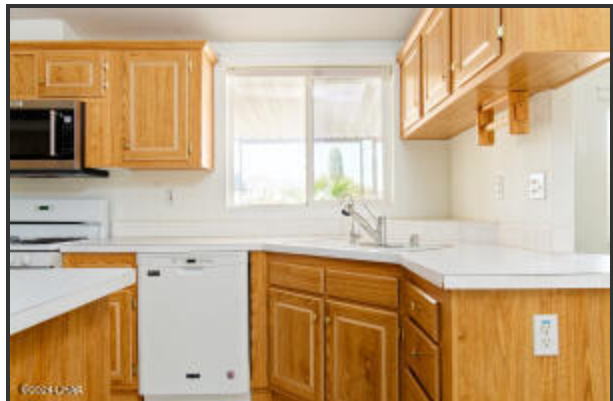
6



7



8



10



11



13



18

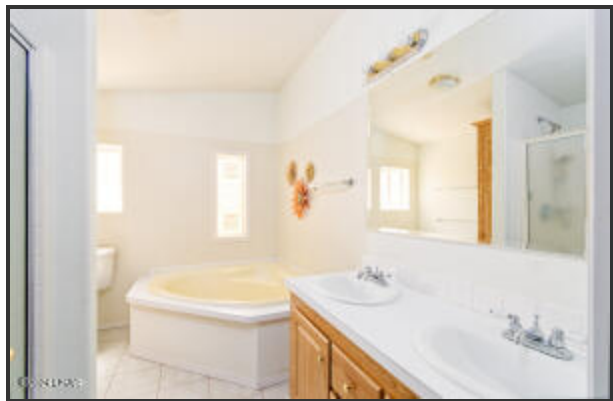


Master suite

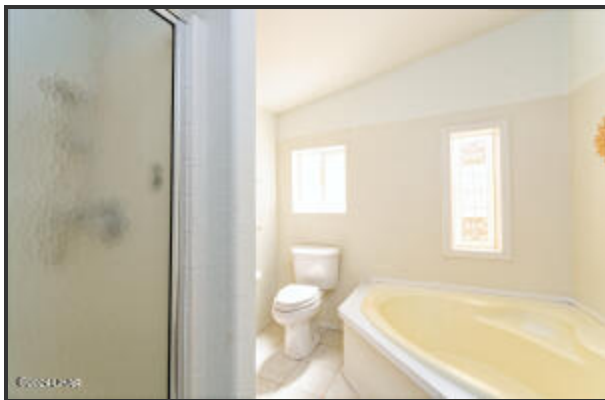
19



20



21



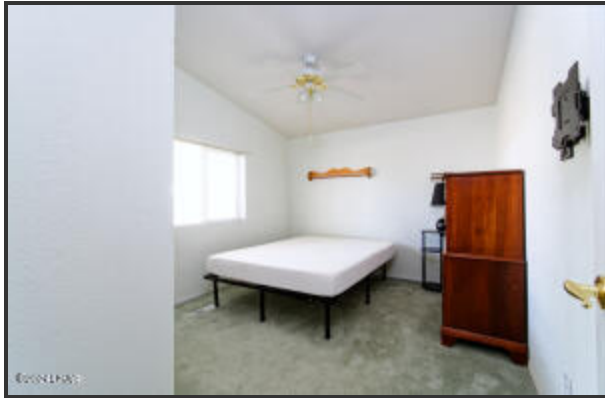
14



garden tub & shower

den/office/craft room

16



bedroom 2

15



bedroom 3

17



hall bath by bedroom 2 & 3

22



24



entrance

26



28



29



30



31



32



33



34



35



36

