



Series 250

Operable Window System

The **Sun Metals Series 250 Operable Window System** is a 2-1/2" **Impact-Resistant** glazing system that retains a Heavy Commercial and Architectural Grade rating. This glazing system offers designers and building owners a high-performance, attractive solution for designs that require an expansive wall of glass. The system is available in **Project-Out**, **Project-In** and **Hopper** configurations.

The **250 Operable Window System** provides exceptional structural, air, and water performance to meet the toughest industry standards. The system is designed to accommodate various glass types and thicknesses depending on the desired performance of the system and project requirements.

Product Features

- PROUDLY MADE IN AMERICA
- **Large and Small Missile Impact-Rated.**
- 15 psf. water sill
- Flange set window
- Tubular construction
- Screw spline construction
- Glazing & Sealing in a controlled factory environment.
- Insulated Laminated, laminated and monolithic glazing available.
- Standard colors: white, silver, bronze.



Series 250

Operable Window System

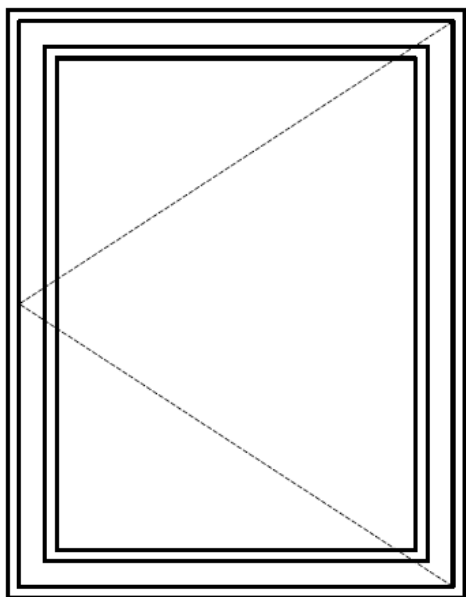
Product Options

- Class 1 anodized finishes
- Duracron baked enamel
- Kynar 500 standard and custom colors
- Turtle code compliant glazing
- 9/16" Impact Glazing
- Tinted and Low-E coating
- Single, double or internal muntins
- Receptor and Panning systems available
- Standard hardware finishes (White, Black or Aluminum)
- Custom Hardware finishes available

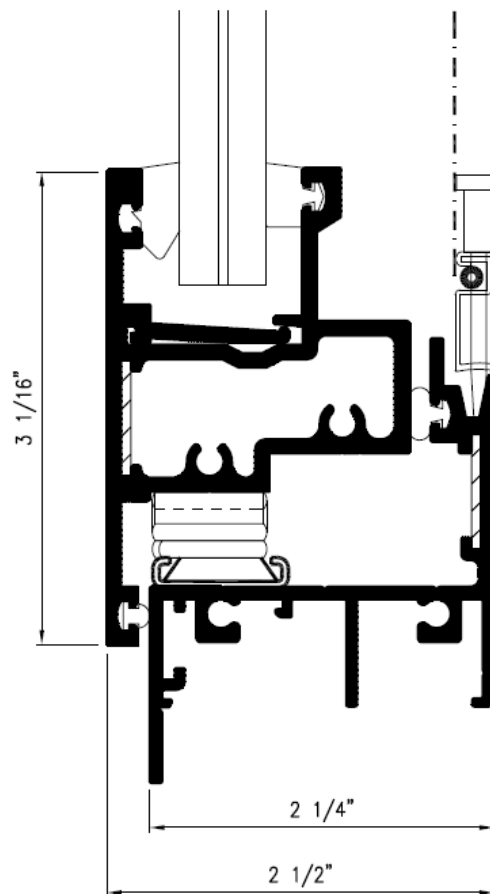


Performance Data	Vents	Casements	Hoppers
Air Infiltration @ 6.24 psf	0.02 scfm/ft ²	0.03 scfm/ft ²	0.03 scfm/ft ²
Water	15 psf	20 psf	15 psf
Design Load	+100/-115 psf	+100/-120 psf	+/-100 psf
Forced Entry	10	10	10

SERIES 250C - CASEMENT



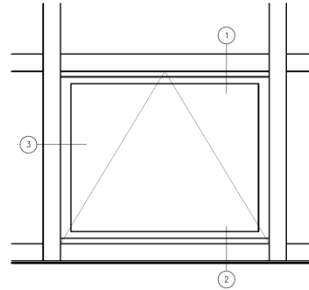
ELEVATION



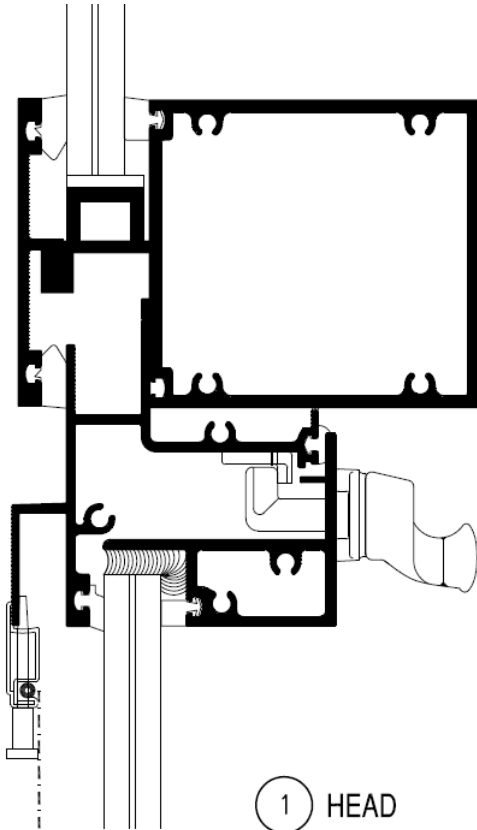
① PERIMETER EXTRUSION



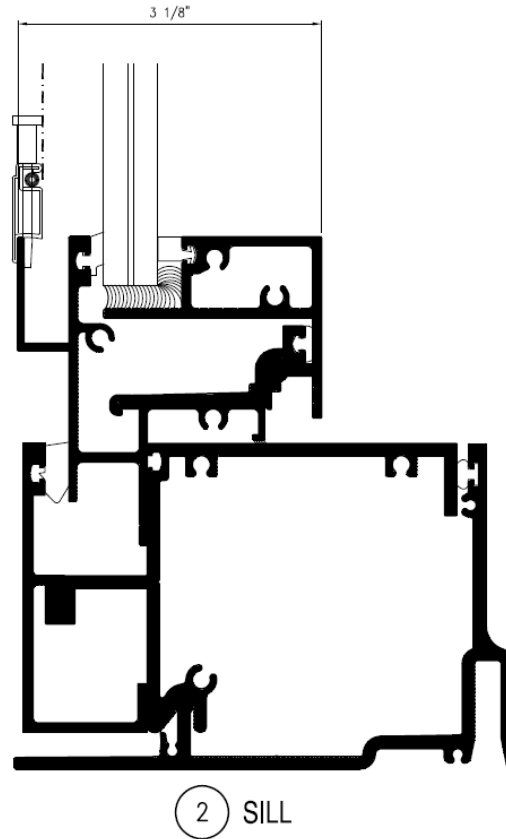
SERIES 250H - PROJECT IN
(INSTALLED IN SERIES 450)



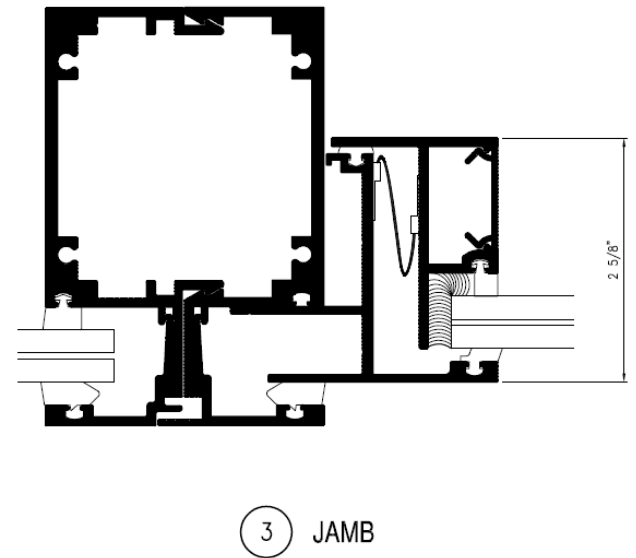
ELEVATION



① HEAD



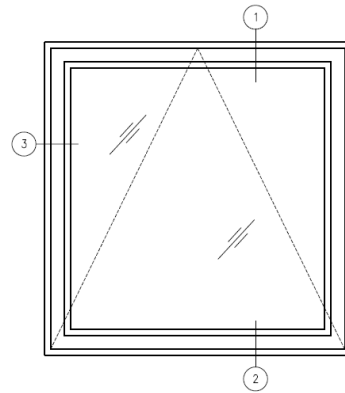
② SILL



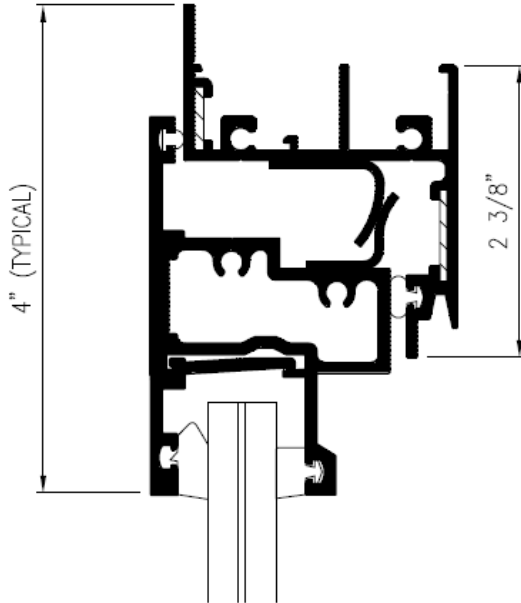
③ JAMB



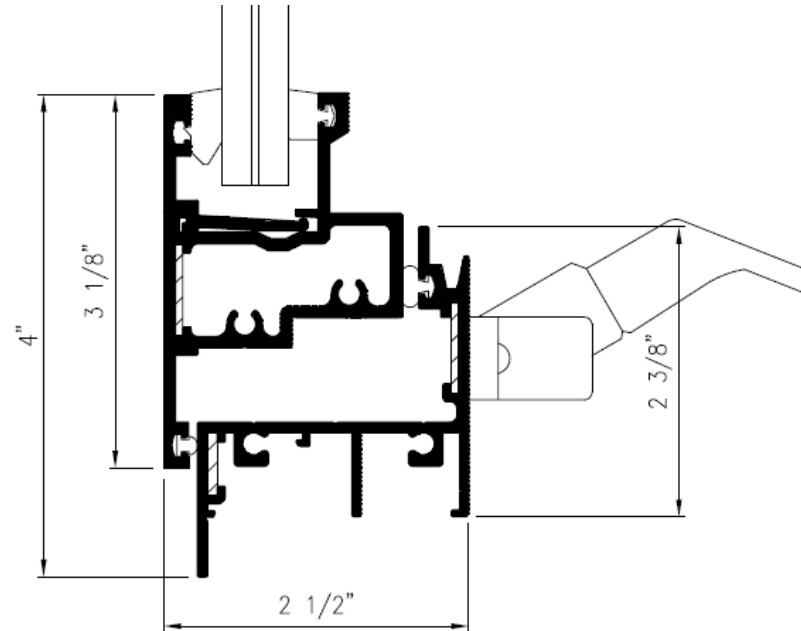
SERIES 250V - PROJECT OUT



ELEVATION



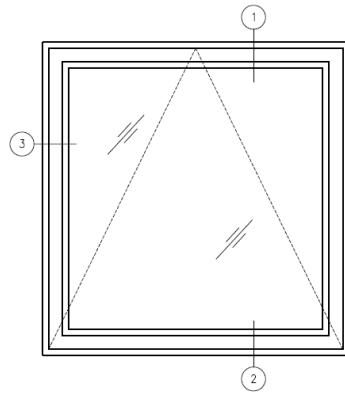
1 HEAD



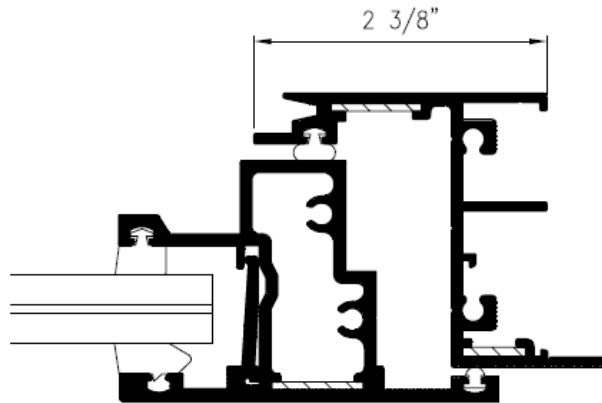
2 SILL



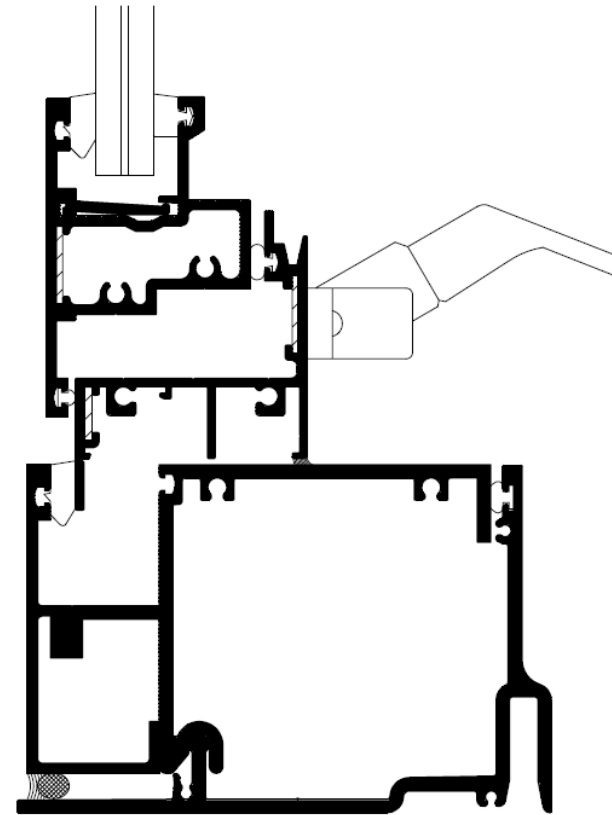
SERIES 250V - PROJECT OUT



ELEVATION



3 JAMB



4 SILL - INSTALLED IN 450 FIXED WINDOW WALL SYSTEM