



Series 300

Thermal Operable Window System

The **Sun Metals Series 300 Operable Window System** is a 3" Thermally Broken framing system available in **Project-Out**, **Project-In**, and **Casement** configurations. This glazing system offers designers and building owners a high-performance, attractive solution for designs that require an expansive wall of glass. Thermally-broken receptors are available, and the windows can also be glazed into Sun Metals thermal curtain wall or window wall systems.

The **300 Operable Window System** provides exceptional structural, air, and water performance that meet the toughest industry standards. The system is designed to accommodate various glass types and thicknesses depending on the desired performance of the system and project requirements.

Product Features

- MADE IN USA
- **Large missile Impact-Rated to Level E.**
- 15 psf. watersil
- Pour & De-bridge Thermal break.
- Blast Mitigation
- Screw spline construction
- Glazing & Sealing in a controlled factory environment.
- Insulated Laminated, laminated and monolithic glazing available. Optional blinds with DGP.
- Standard and custom finishes are available.



Product Options

- Class 1 anodized finishes
- Duracron baked enamel
- Kynar 500 standard and custom colors
- Turtle code compliant glazing
- 9/16", 1-1/16" Impact Glazing
- Tinted and Low-E coating
- Single, double or internal muntins
- Receptor and Panning systems available
- Standard hardware finishes (White, Black or Aluminum)
- Custom Hardware finishes available

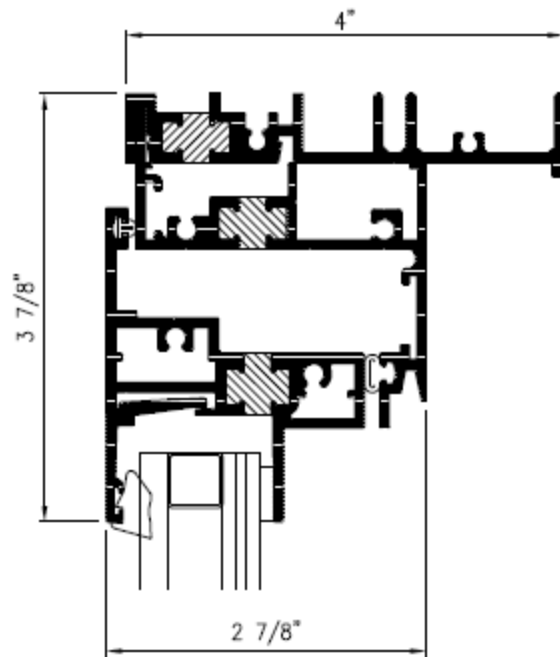
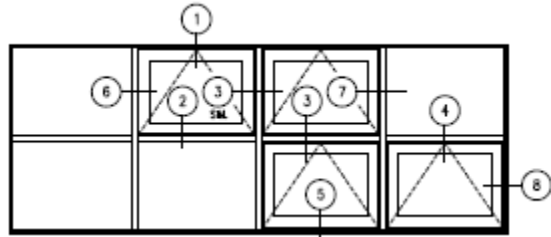


Series 300

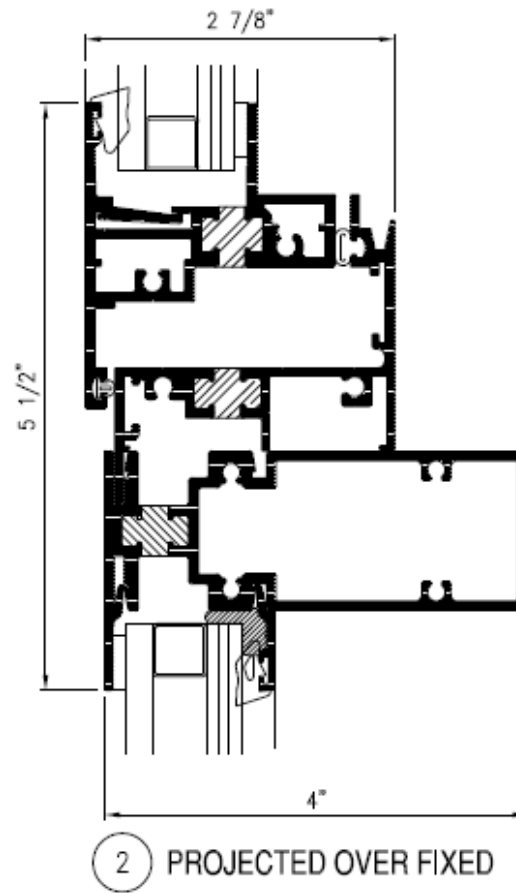
Thermal Operable Window System

Performance Data	Vents	Casements
Air Infiltration @ 6.24 psf	0.002 scfm/ft ²	0.000 scfm/ft ²
Water	15 psf	15 psf
Design Loads	+/-65 psf	+/-65 psf
Forced Entry	10	10
U-factor	.54	.53

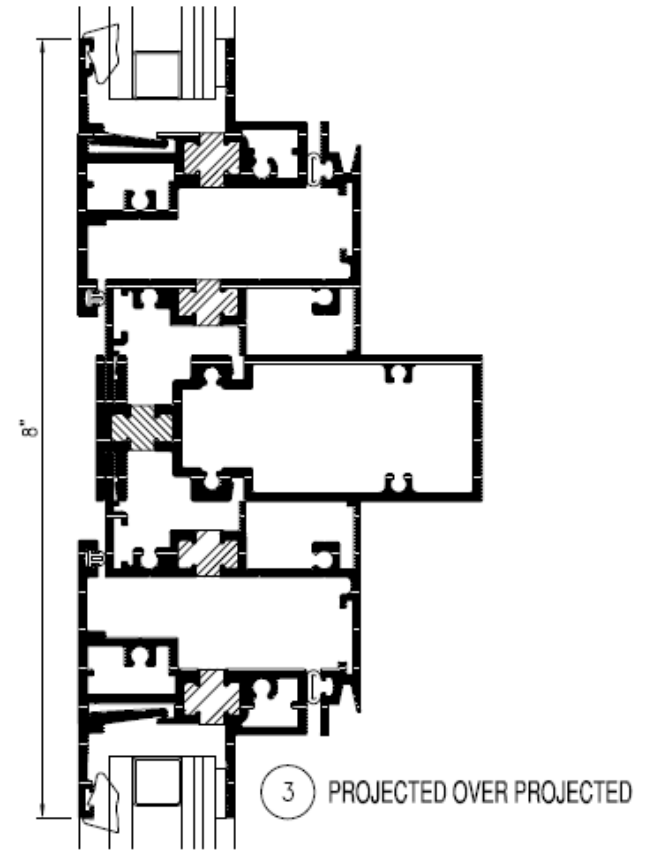
SERIES 300V - PROJECT OUT



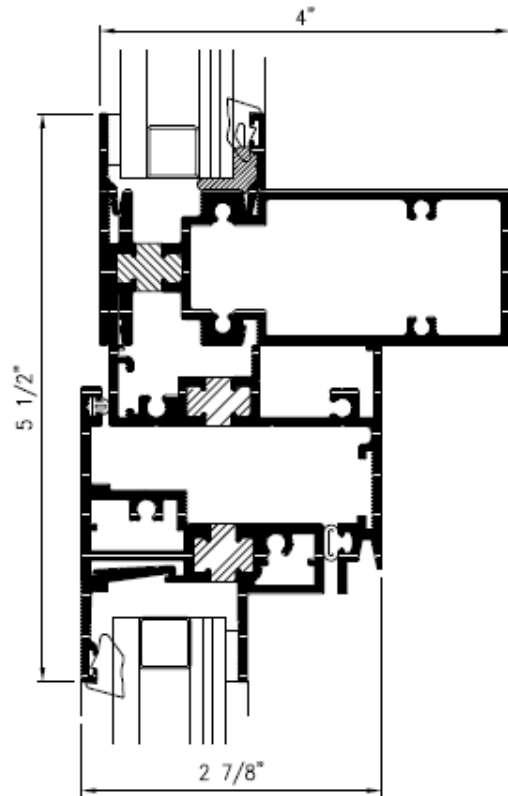
① PROJECTED HEAD



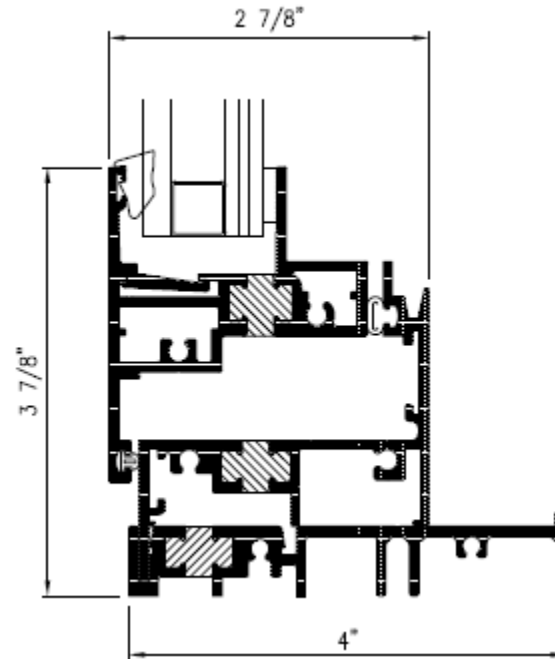
② PROJECTED OVER FIXED



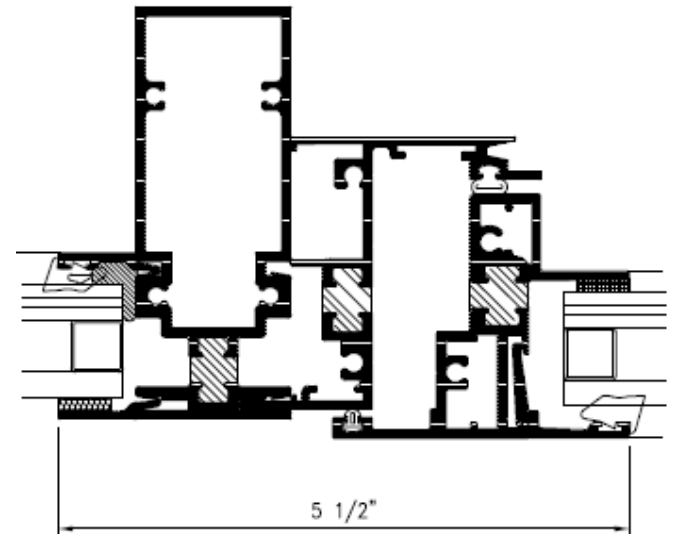
③ PROJECTED OVER PROJECTED



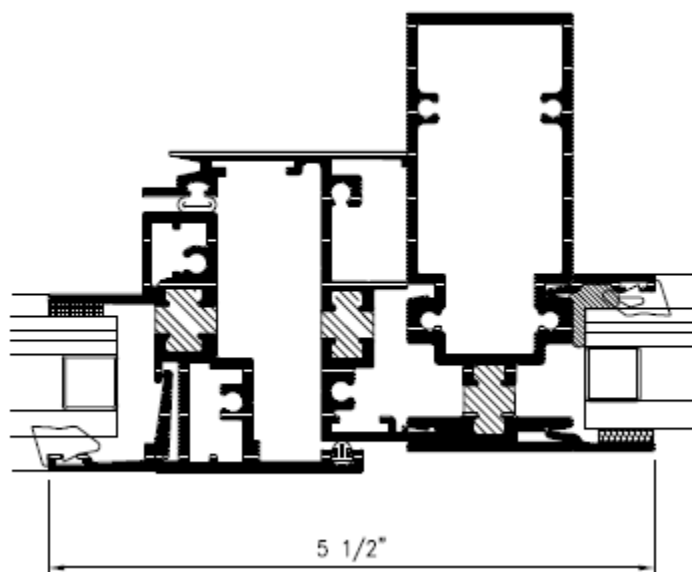
4 FIXED OVER PROJECTED



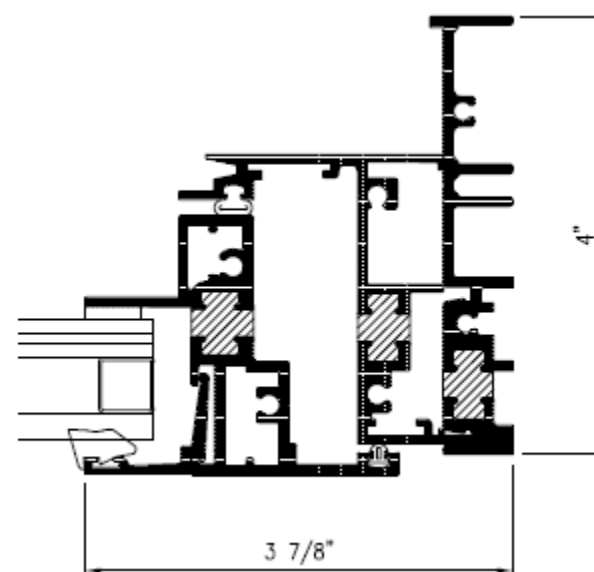
5 PROJECTED SILL



6 FIXED ADJACENT TO PROJECTED



⑦ PROJECTED ADJACENT TO FIXED



⑧ PROJECTED JAMB