

STUDIO 180 DESIGN BLOCKBUSTER DESIGN IDEAS

Make the most of the Studio 180 Design Free Blockbusters with some Quilt Design Ideas!

www.Studio180Design.com - Downloads Tab

BLOCKBUSTER		Tools and Techniques	Block Sizes
1	Ohio Star Variation	Tucker Trimmer 1 or 3	6", 12", 15"
3	Flying Dutchman	Wing Clipper I	4", 8", 12"
6	Rolling Stone	Square Squared or Large Square Squared	3", 6", 12"
12	Double Trek	Corner Beam Sliver Technique	6", 9", 12"
22	Square Dance	Square Squared or Large Square Squared Wing Clipper I	6", 9", 12"
24	Compounding Four	Four Patch Square Up	6", 10", 12"
29	Pointsettia	Rapid Fire Lemoyne Star Split Rects Tucker Trimmer 1 or 3	7", 14", 21"
38	Stormy Chain	Diamond Rects Four Patch Square Up	4", 8", 12"
39	Do the Twist	Rapid Fire Lemoyne Star Tucker Trimmer 1 or 3 Starburst Technique	4", 8", 12"
41	Razor's Edge	Corner Pop I V-Block Sq ² OR LgSq ²	3", 6", 12"
43	Third Hour	TT1 OR TT3 Corner Pop III	6", 9", 12"
48	Mix & Match	V-Block Square Squared 1/2 Inch	4 1/2", 10 1/2", 15 1/2"
57	Beacon	Corner Beam Four Patch Square Up Offset Four Patch Technique	6", 12", 18"

#1



Created by Deb Tucker

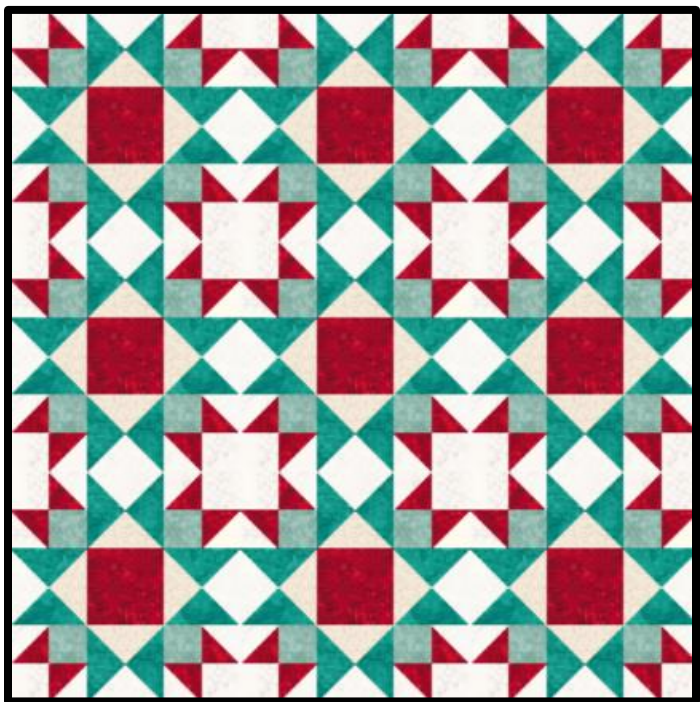
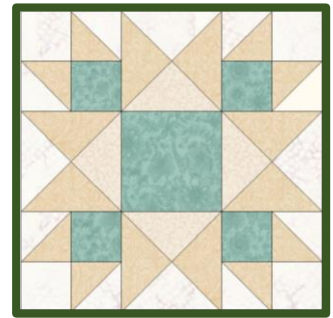
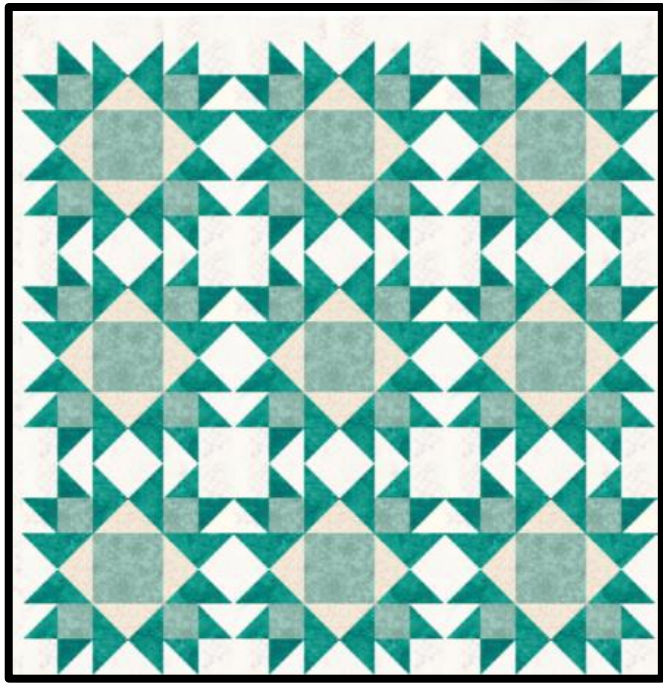
BlockBusters

Ohio Star Variation I

Made using the Tucker Trimmer® I



Studio180Design.Net



Deb Tucker's
Studio 180
Design

Blockbusters @Studio180Design.net

Running with Scissors
Quilters

#1

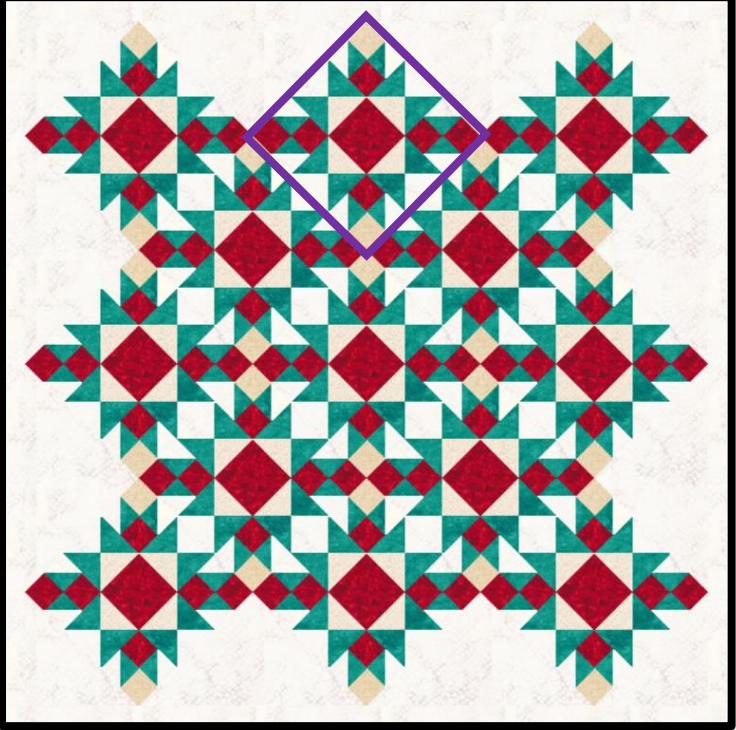


Created by Deb Tucker

BlockBusters
 Ohio Star Variation 1
 Made using the Tucker Trimmer® 1



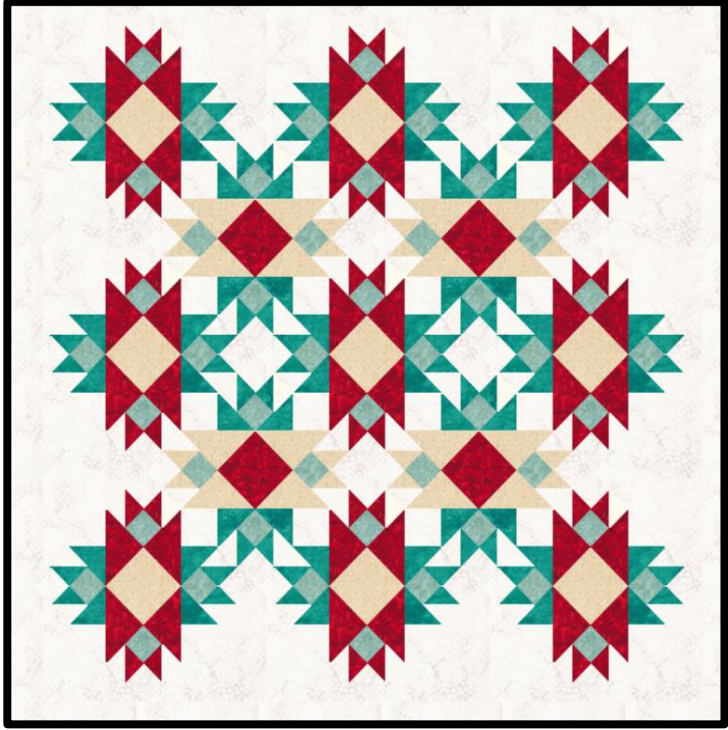
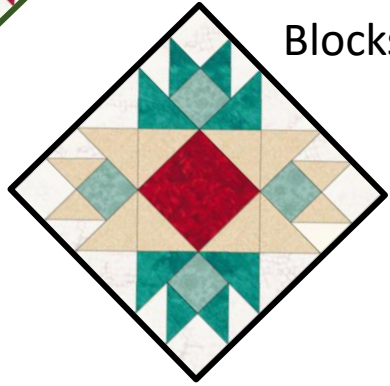
Studio180Design.Net



On Point



On Point
2 different
Color
Blocks



#1



Created by Deb Tucker

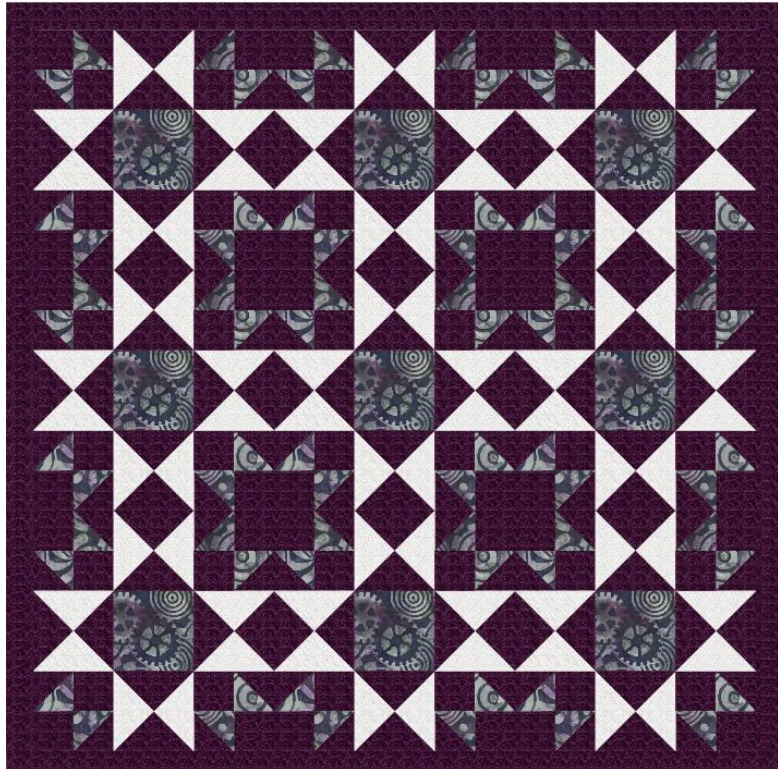
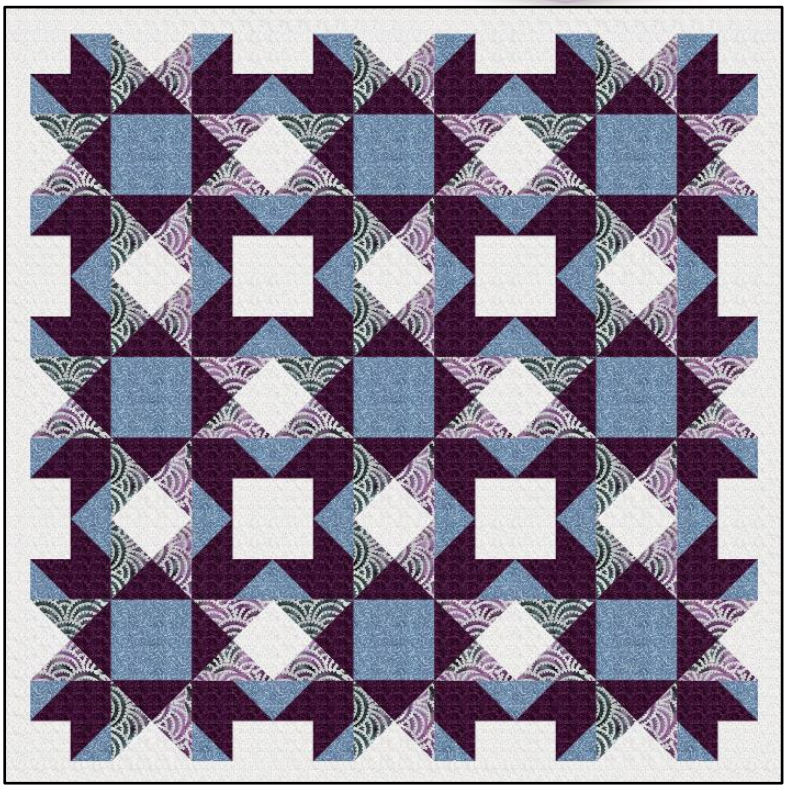
BlockBusters

Ohio Star Variation 1

Made using the Tucker Trimmer® 1



Studio180Design.Net



Deb Tucker's
Studio 180
Design

Blockbusters @Studio180Design.net

Running with Scissors
Quilters

#1



Created by Deb Tucker

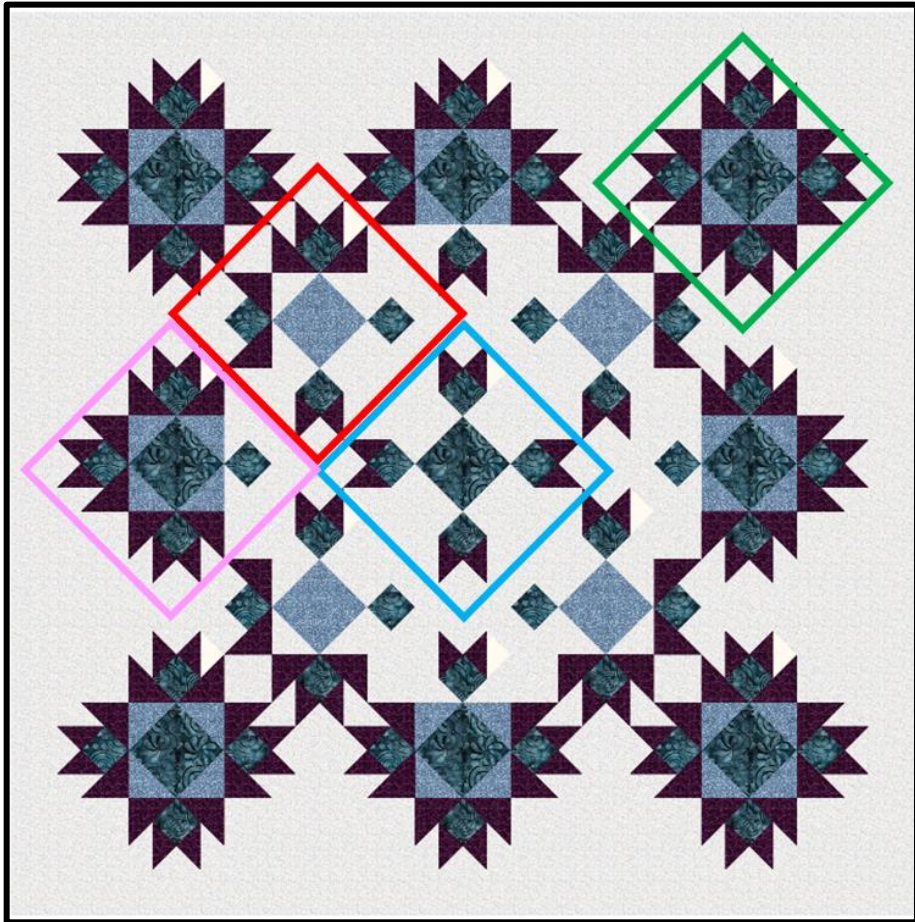
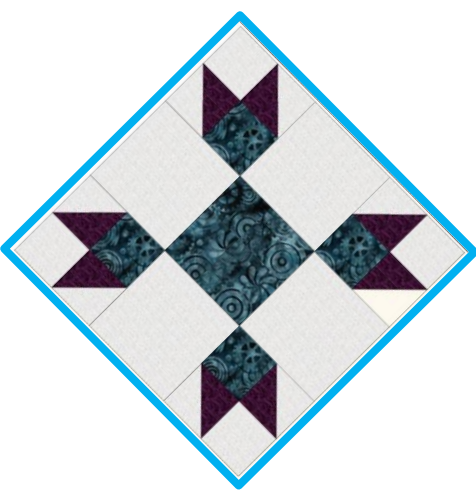
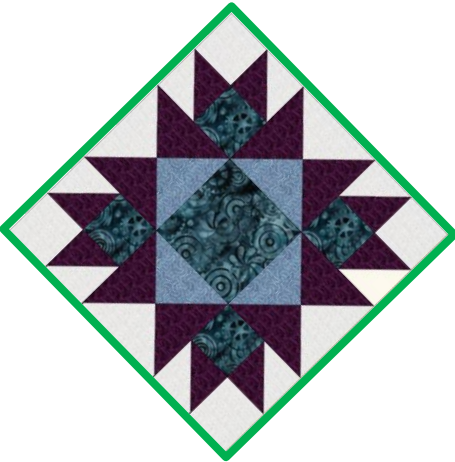
BlockBusters

Ohio Star Variation 1

Made using the Tucker Trimmer® I



Studio180Design.Net



#3



Created by Deb Tucker
Studio180Design.Net

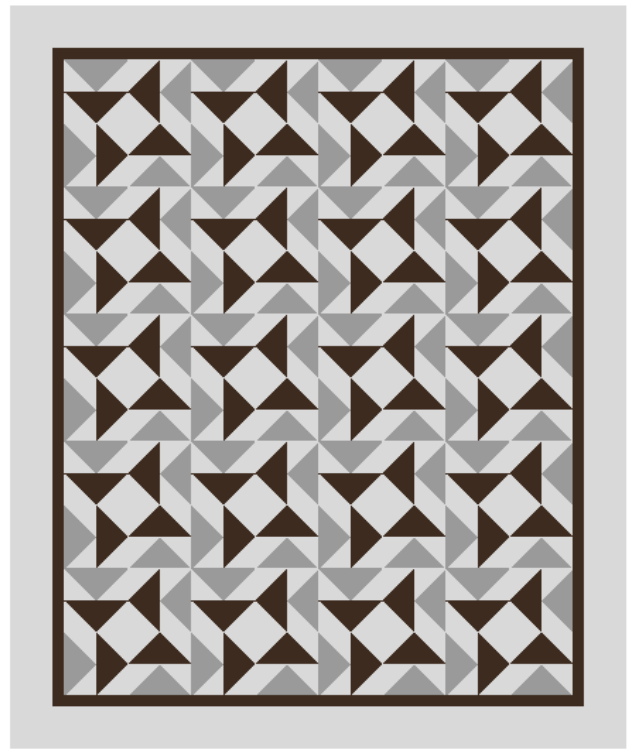
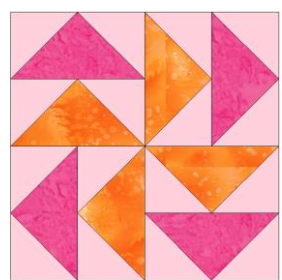
BlockBusters

Flying Dutchman

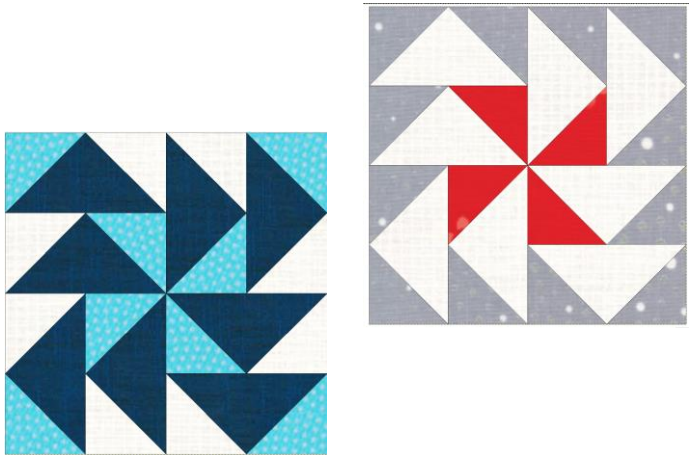
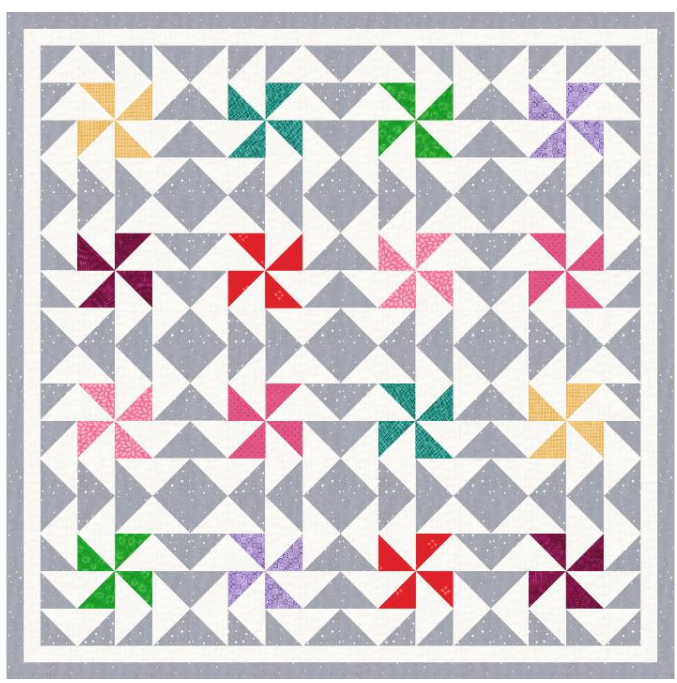
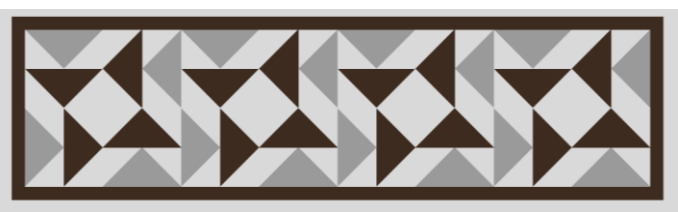
Made using the Wing Clipper® I



BlockBusters 2016: #3
Difficulty: ★★★★★



Different Color Placement
Creates Different Looks!



#6



Created by Deb Tucker
Studio180Design.Net

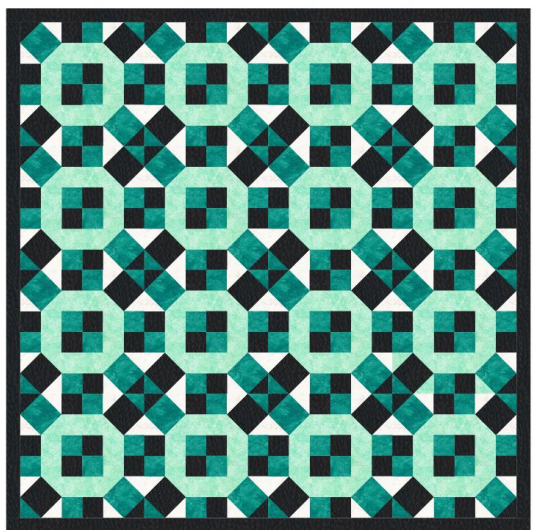
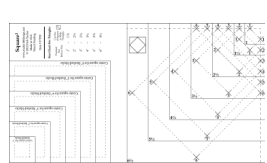
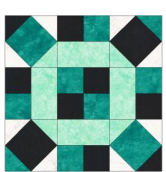
BlockBusters

Rolling Stone

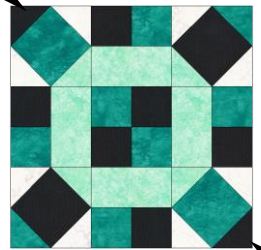
Made using the Square Squared®



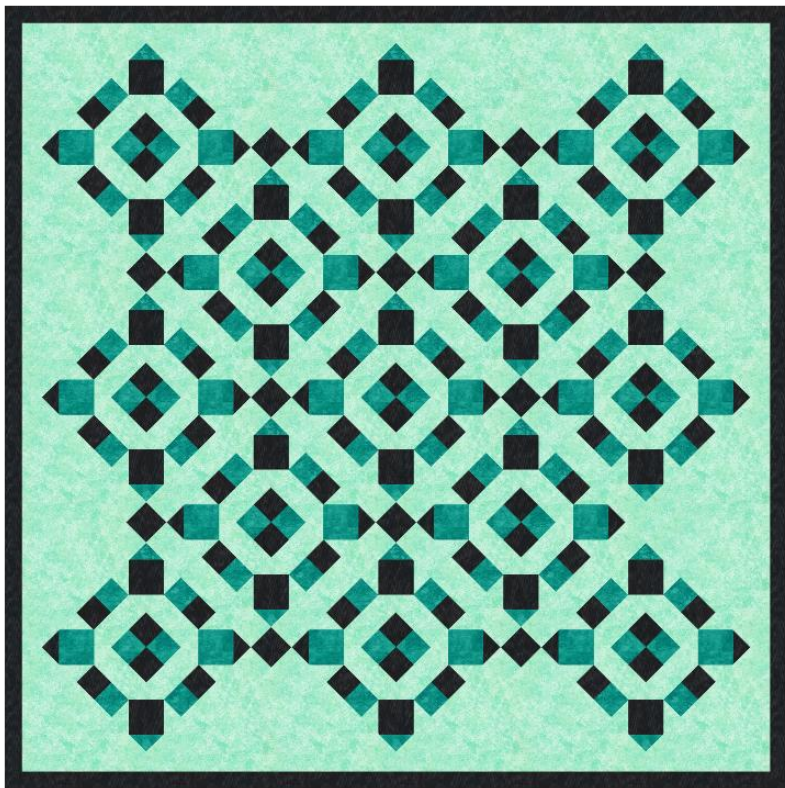
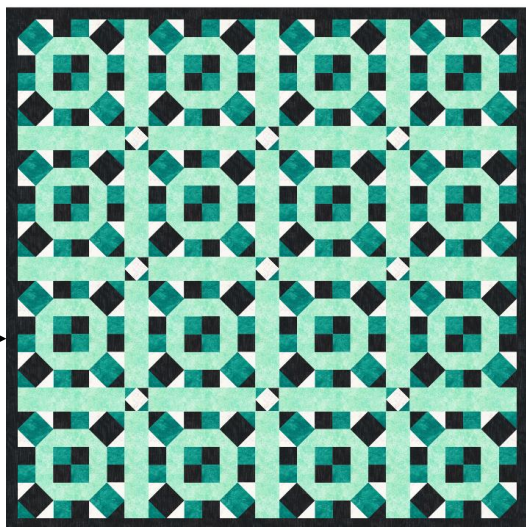
BlockBusters 2016: #6
Difficulty: ★★☆☆☆



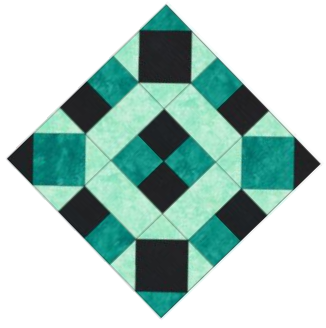
← Traditional Layout



→ Add sashing and
add square squared
corner stones



On Point with
cornerstone sashing





Created by Deb Tucker
Studio180Design.Net

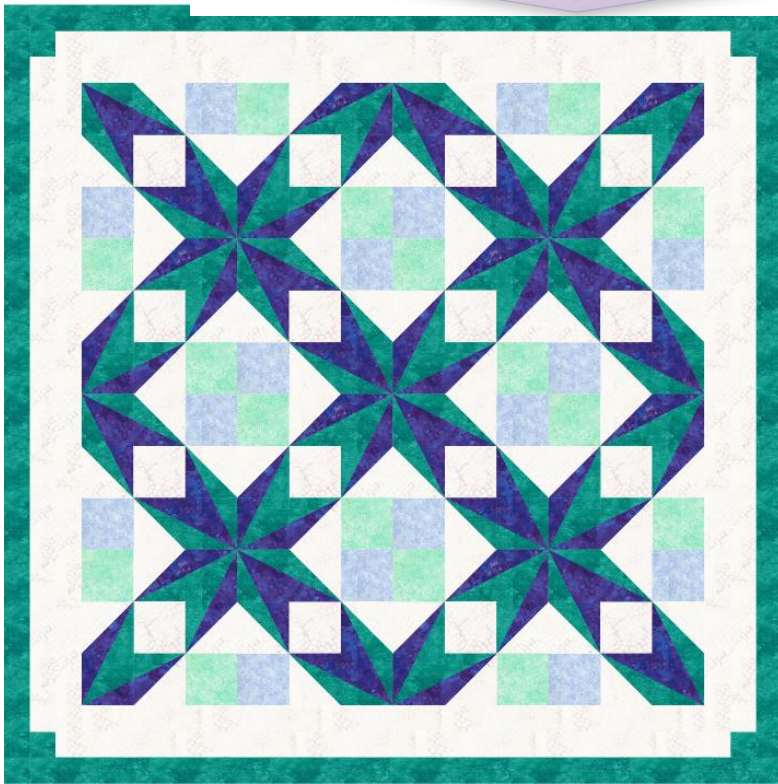
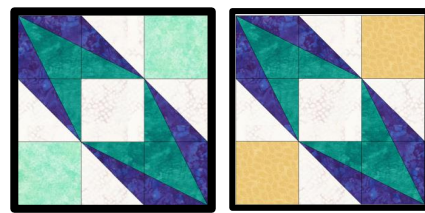
BlockBusters

Double Trek

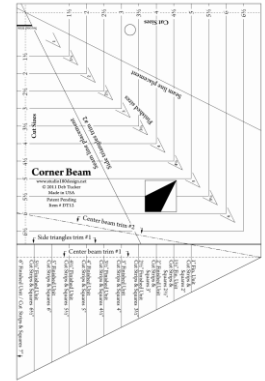
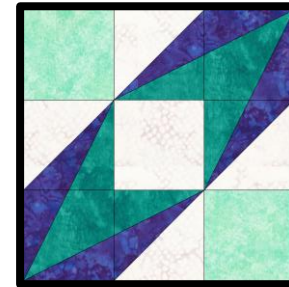
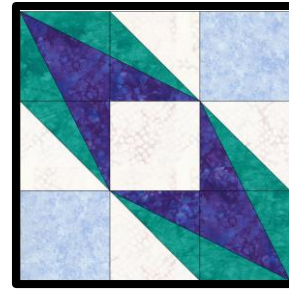
Made using Studio 180 Design's Corner Beam®
& Sliver Technique Sheet



BlockBusters 2016: #12
Difficulty: ★★★★★



Traditional Layout using 2
“opposite” colored Blocks

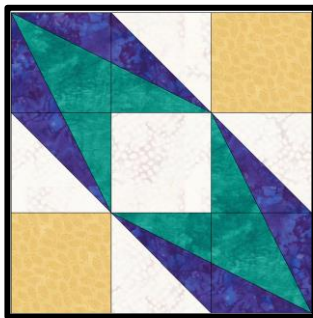


Technique Sheet
Sliver

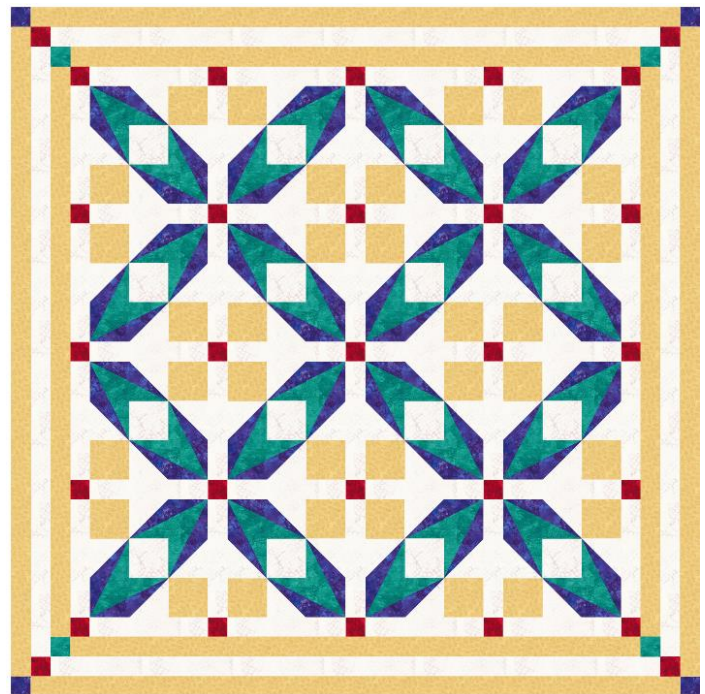
This technique sheet provides instructions for creating slivers, which are narrow strips of fabric used in quilting. It includes a list of materials and a table of measurements.

Material	Color	Quantity	Width	Length
Blue	Blue	1	1/2"	10"
Green	Green	1	1/2"	10"
Purple	Purple	1	1/2"	10"
White	White	1	1/2"	10"
Yellow	Yellow	1	1/2"	10"
Red	Red	1	1/2"	10"

Instructions for cutting and sewing the slivers are provided below the table.



Adding Sashing with
contrasting cornerstones





Created by Deb Tucker
Studio180Design.Net

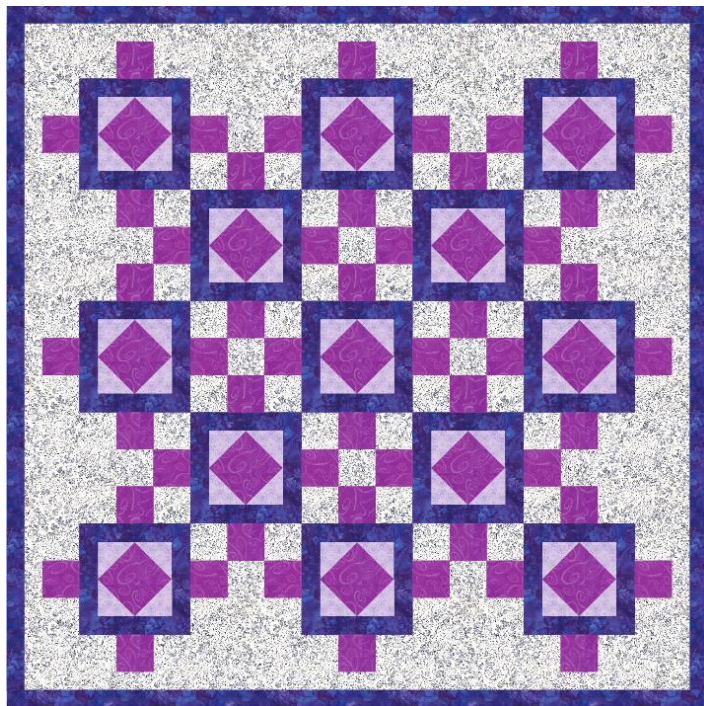
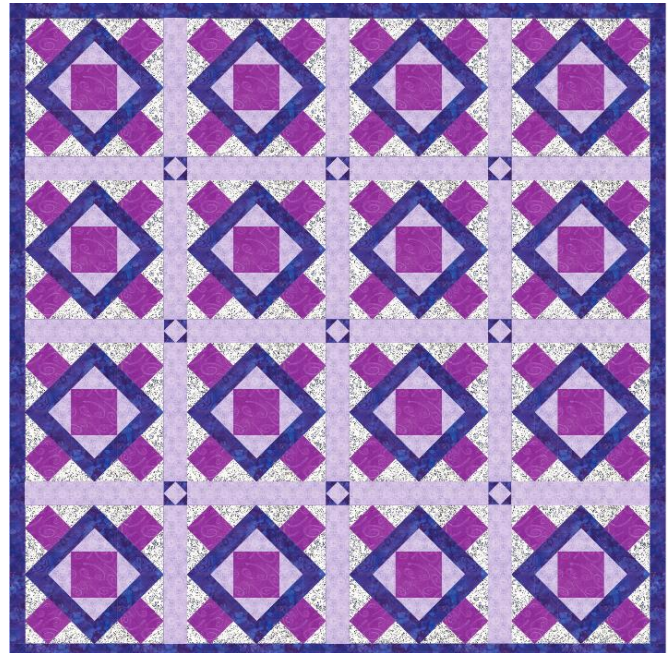
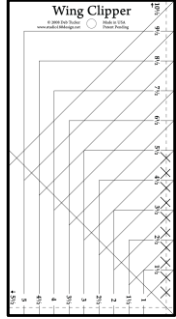
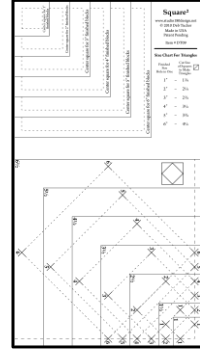
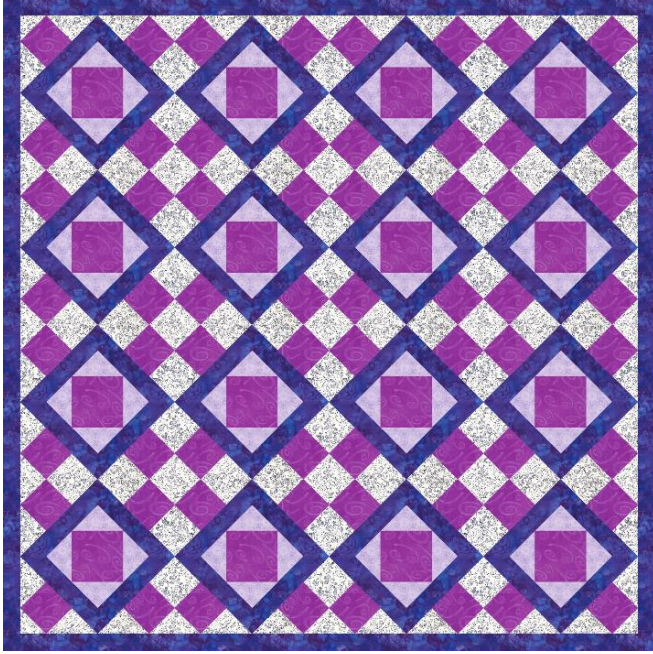
BlockBusters

Square Dance

Made using Studio 180 Design's Wing Clipper® 1
and Square Squared® tools



BlockBusters 2016: #22
Difficulty: ★★★★★



#24



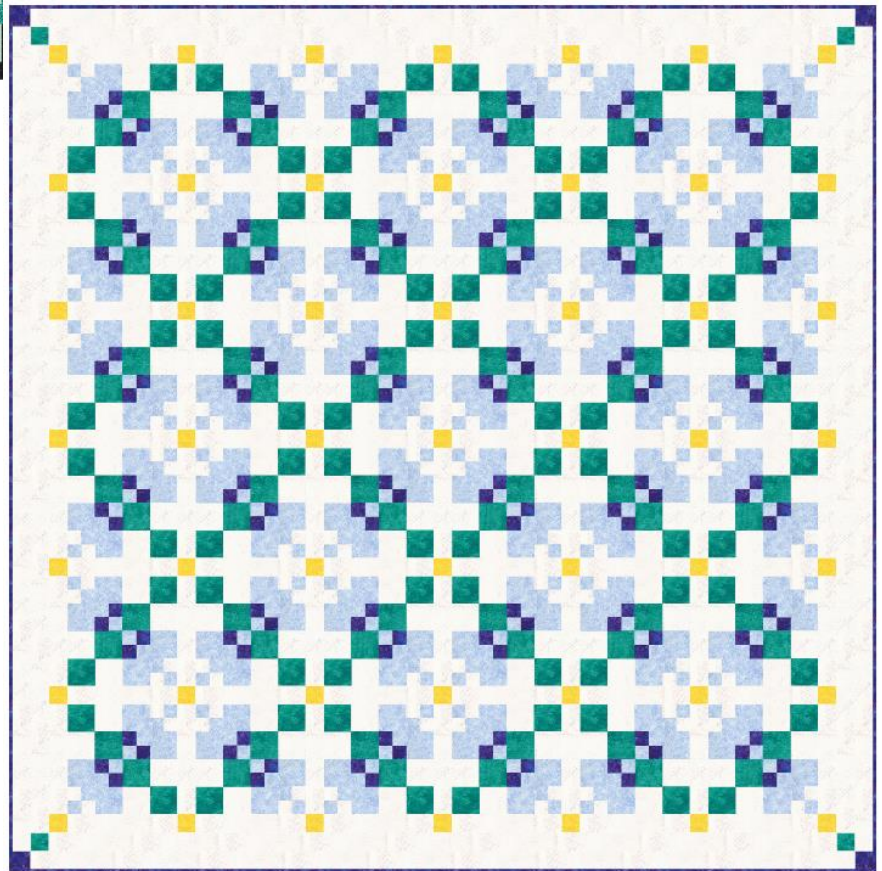
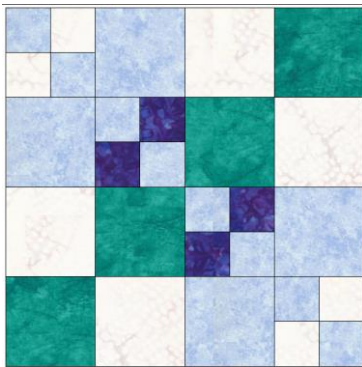
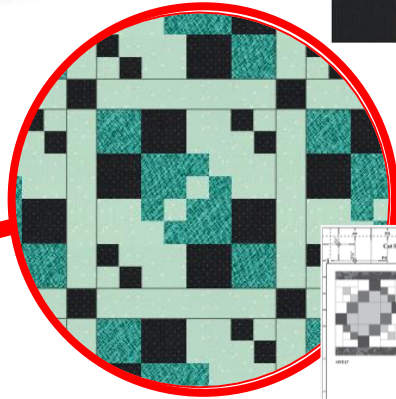
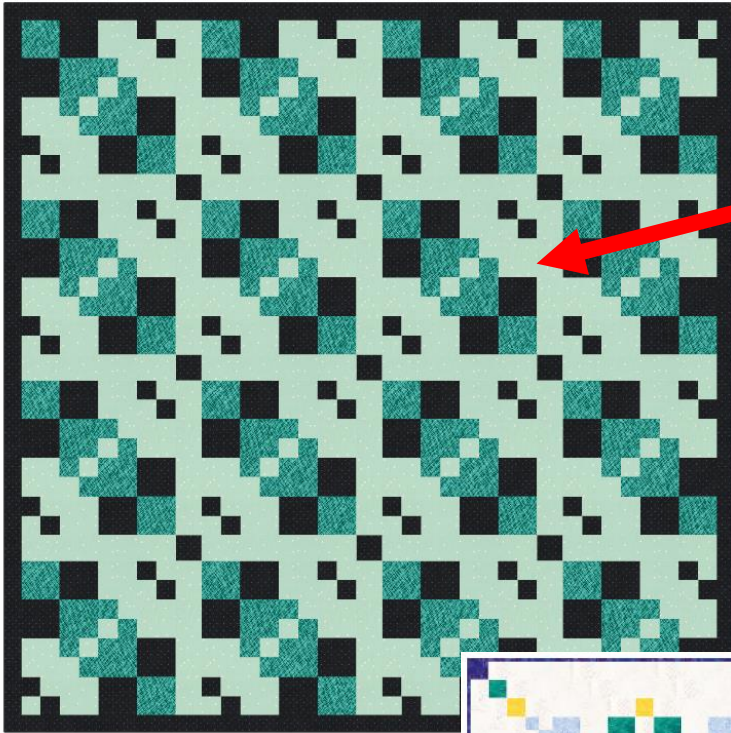
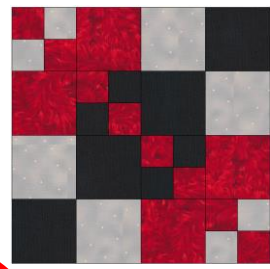
Created by Deb Tucker
Studio180Design.Net

BlockBusters

Compounding Four
Made using Studio 180 Design's Four Patch
Square Up® tool



BlockBusters 2016: #24
Difficulty: ★★☆☆☆



Deb Tucker's
Studio 180
Design

Blockbusters @Studio180Design.net

Running with Scissors
Quilters

#29



Created by Deb Tucker
Studio180Design.Net

BlockBusters

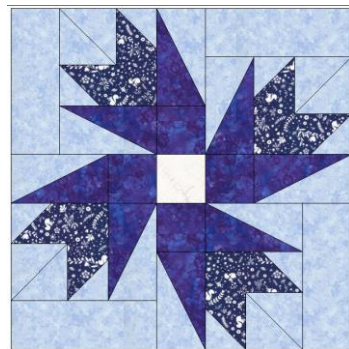
Pointsettia

Made using Studio 180 Design's Tucker Trimmer[®] I,
Split Rects[®], & Rapid Fire[®] Lemoyne Star, tools



BlockBusters 2018: #29

Difficulty: ★★★★★



Combine
(1) 21"
Block and
(4) 7"
Blocks for a
Wall
Hanging

Sash 7"
Blocks on
point for a
Table
Runner





Created by Sarah Furrer
Studio180Design.Net

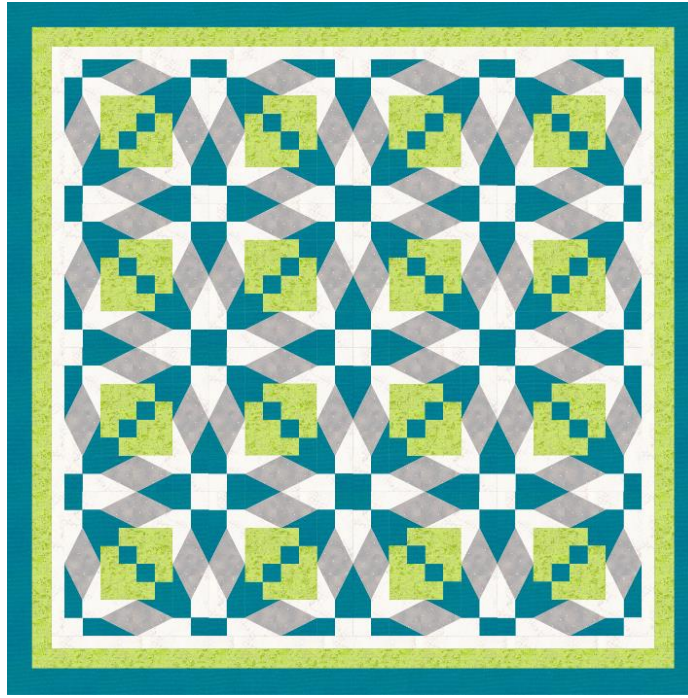
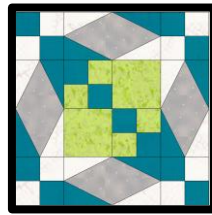
BlockBusters

Stormy Chain

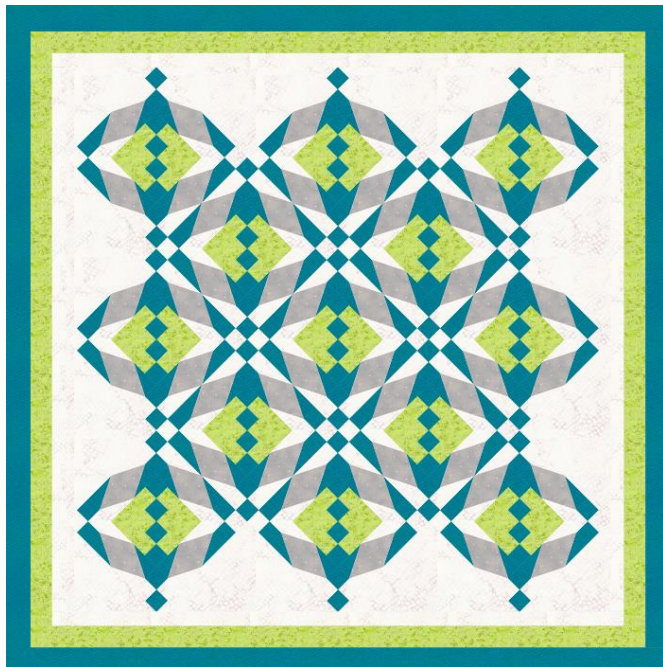
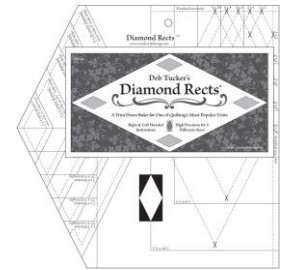
Made using Studio 180 Designs Diamond Rects®
and Four Patch Square Up® tools



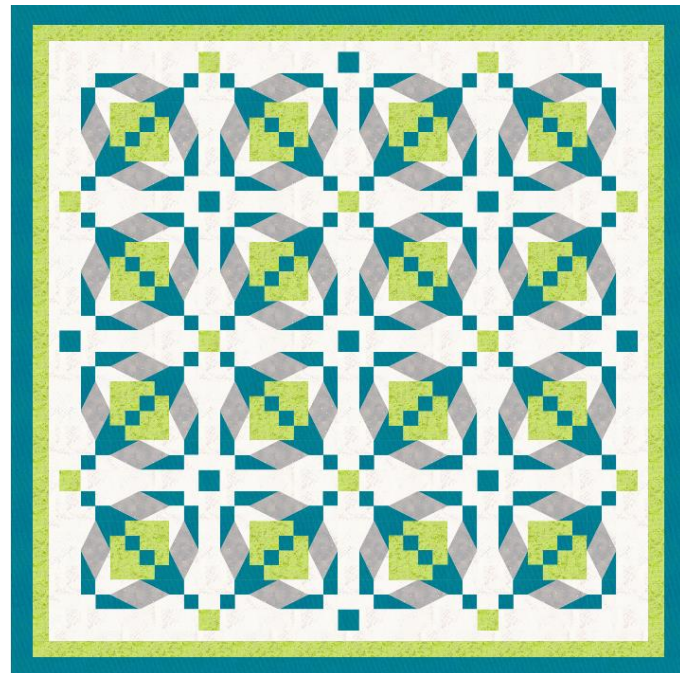
BlockBusters 2019: #38
Difficulty: ★★★★★



Traditional layout



On Point layout



Traditional layout with sashing



Created by Sarah Furrer
Studio180Design.Net

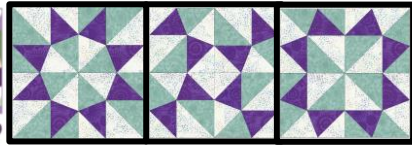
BlockBusters

Do the Twist

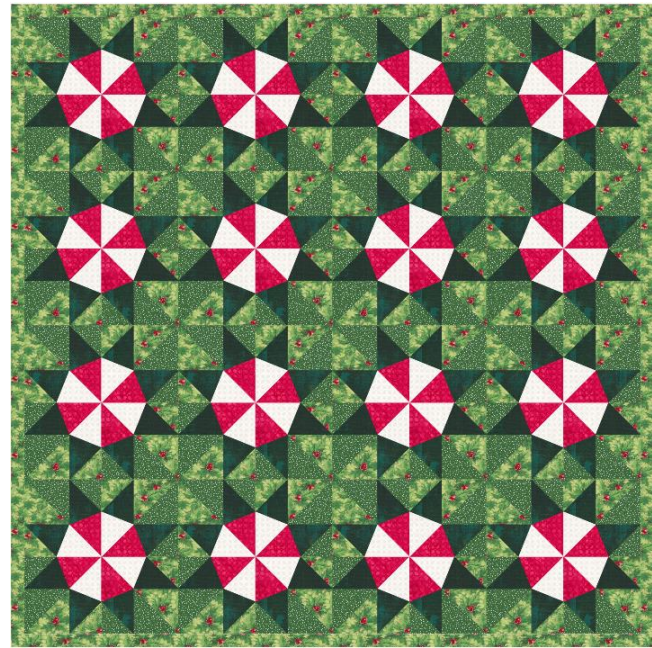
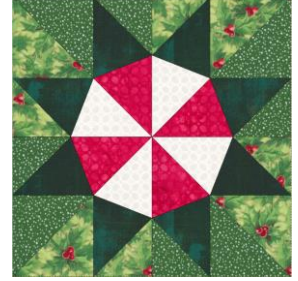
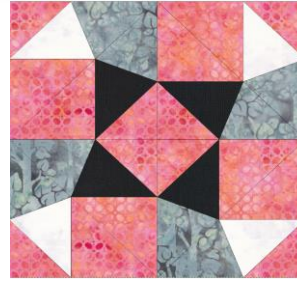
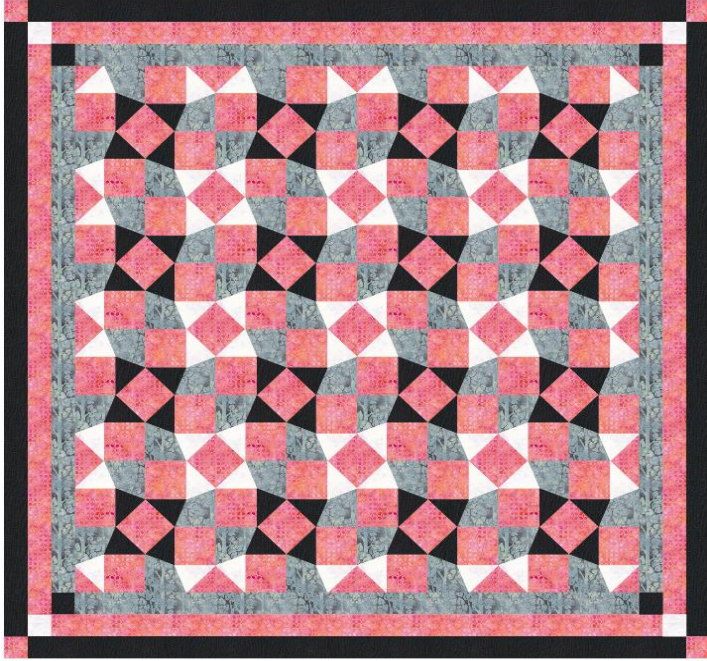
Made using Studio 180 Design's Rapid Fire® Lemoyne
Star, Tucker Trimmer® I, and Starburst
Technique Sheet



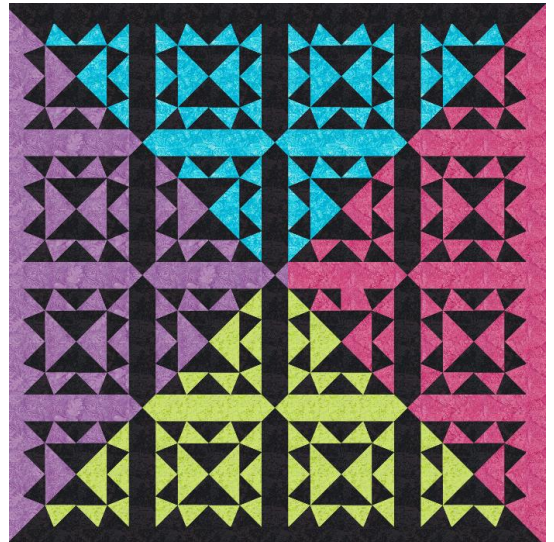
BlockBusters 2019: #39
Difficulty: ★★★★★



Traditional Layout



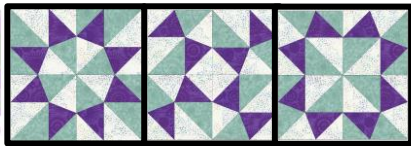
Color Placement creates interest



#39

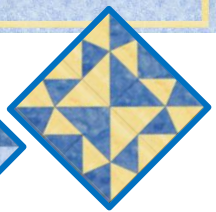
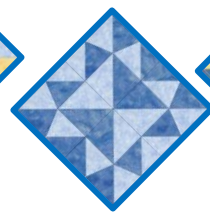
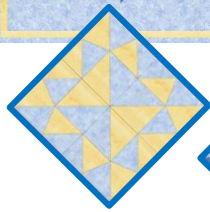
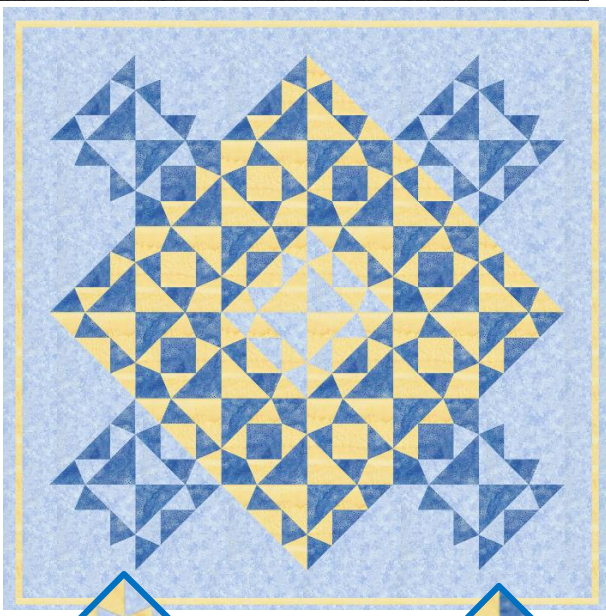
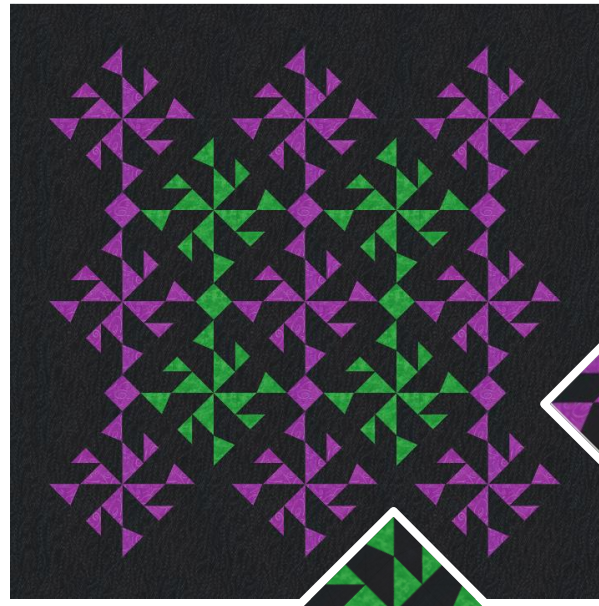
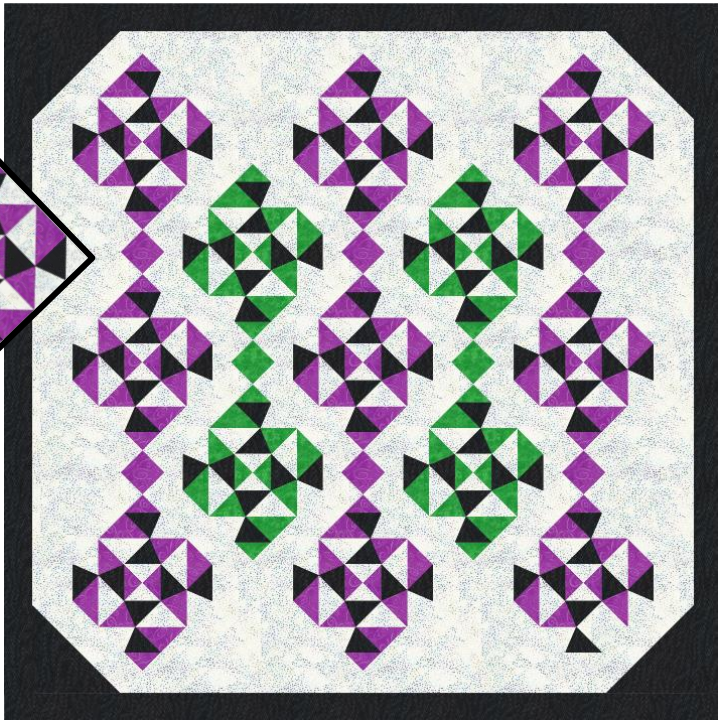
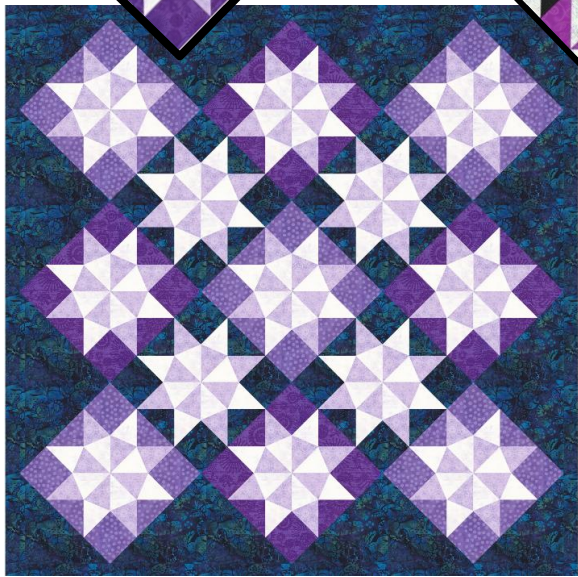
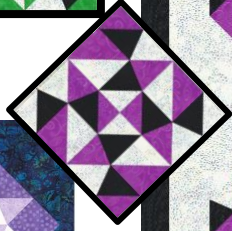
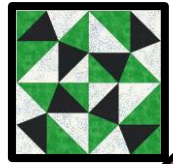


BlockBusters
Do the Twist
Created by Sarah Furrer
Studio180Design.Net
Made using Studio 180 Design's Rapid Fire® Lemoyne
Star, Tucker Trimmer® I, and Starburst
Technique Sheet



BlockBusters 2019: #39
Difficulty: ★★★★★

On Point – so many ideas



Deb Tucker's
Studio 180
Design

Blockbusters @Studio180Design.net

Running with Scissors
Quilters



Created by Sarah Furrer
Studio180Design.Net

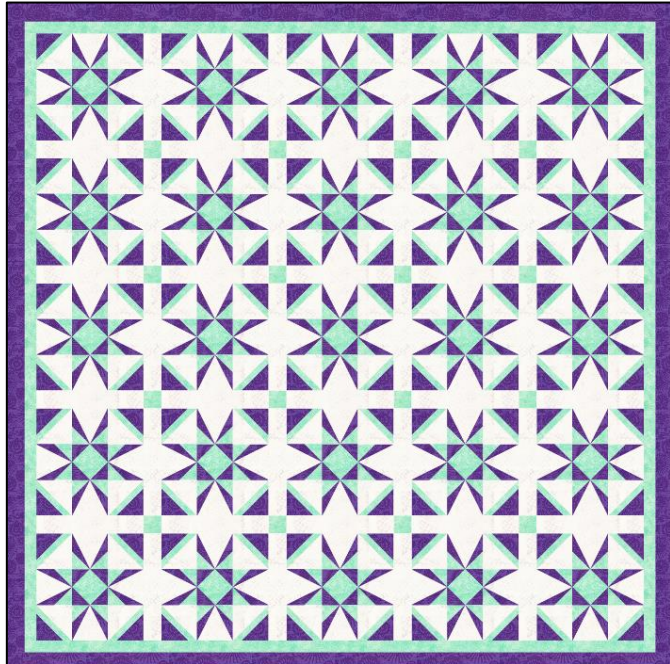
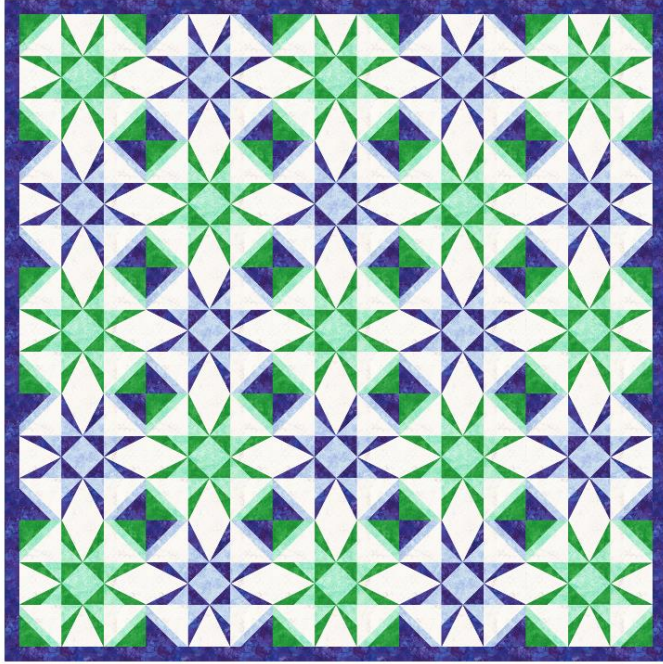
BlockBusters

Razor's Edge

Made using Studio 180 Design's Corner Pop®,
V Block®, and Square Squared® tools

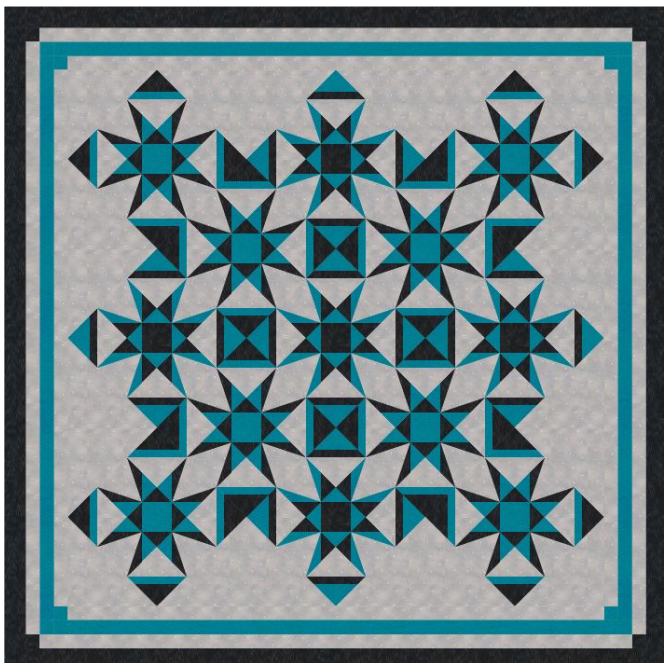
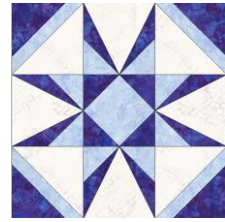
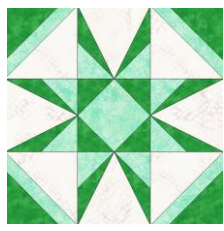


BlockBusters 2019: #41
Difficulty: ★★★★★

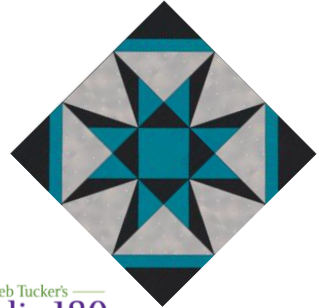


2 Color Ways

1 Color Way with Sashing



2 Color Way on Point



#41



Created by Sarah Furrer
Studio180Design.Net

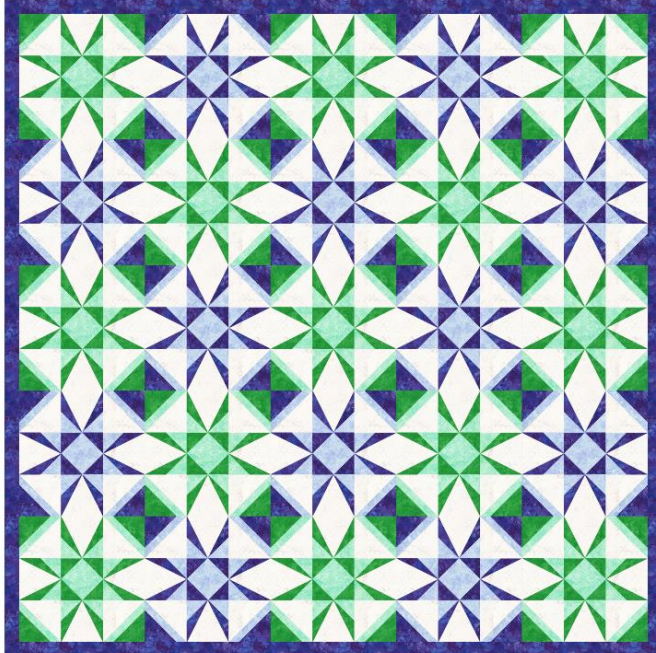
BlockBusters

Razor's Edge

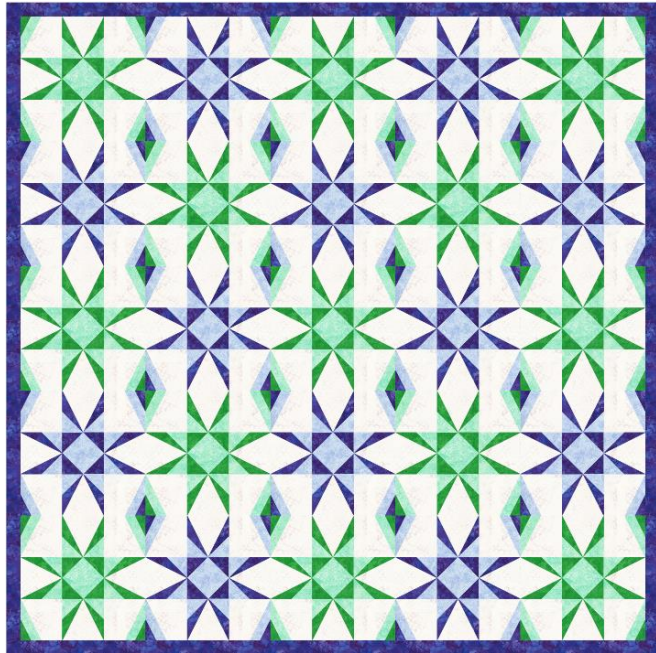
Made using Studio 180 Design's Corner Pop®,
V Block®, and Square Squared® tools



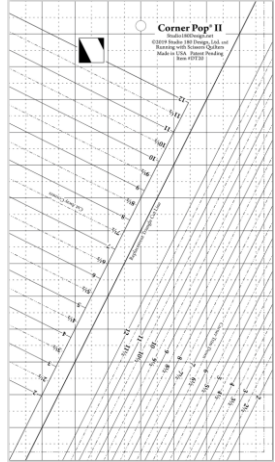
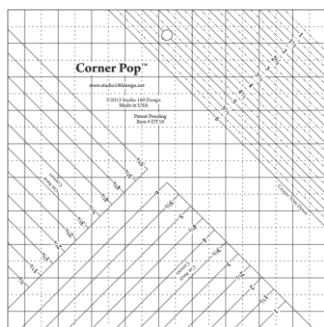
BlockBusters 2019: #41
Difficulty: ★★★★★



Corner Pop 1



Corner Pop 2



#43



Created by Sarah Furrer
Studio180Design.Net

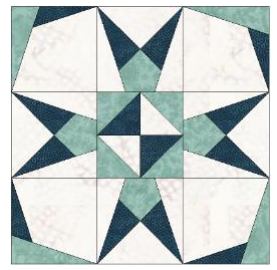
BlockBusters

Third Hour

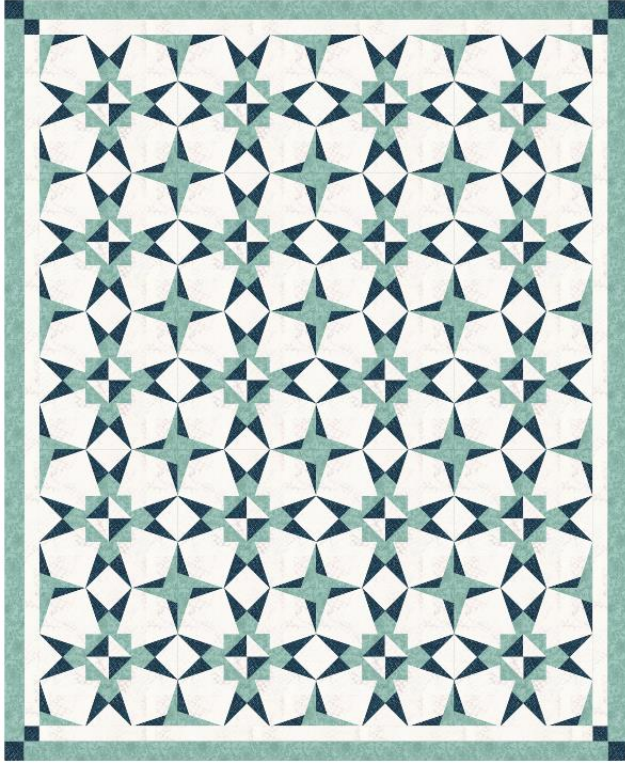
Made using Studio 180 Design's Corner Pop® III
and Tucker Trimmer® I tools.



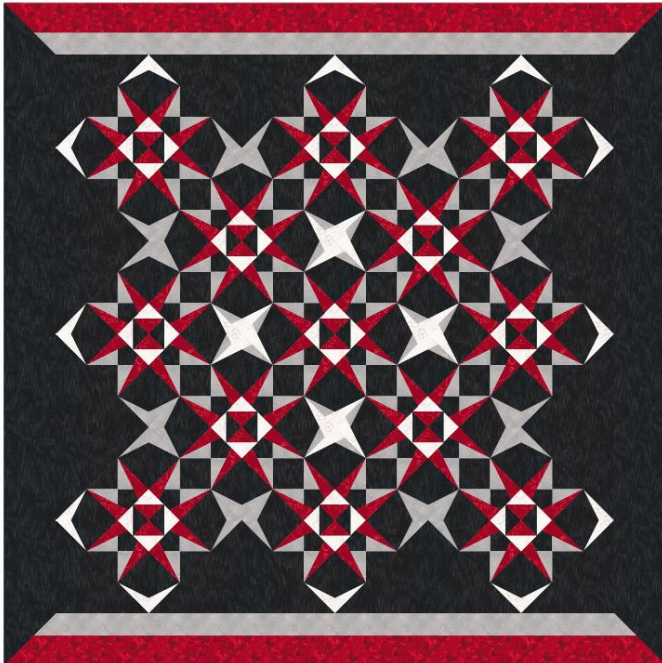
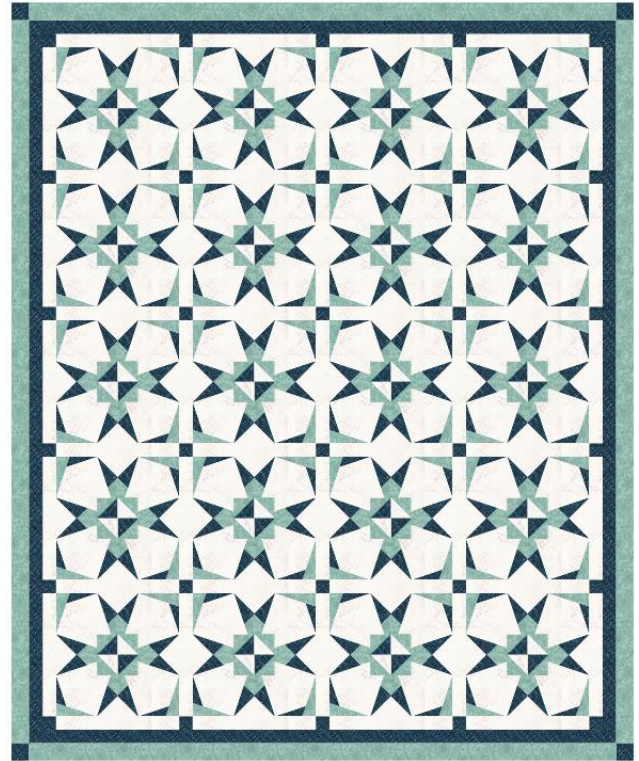
BlockBusters 2019: #43
Difficulty: ★★★★★



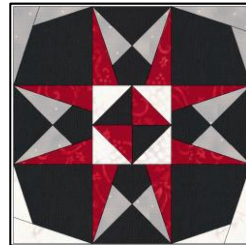
Traditional Layout



Traditional Layouts with sashing – Continue
the corner stones into the border



On Point – a few different “Pop”
placements



Deb Tucker's
Studio 180
Design

Blockbusters @Studio180Design.net

Running with Scissors
Quilters



Created by Sarah Furrer
Studio180Design.Net

BlockBusters

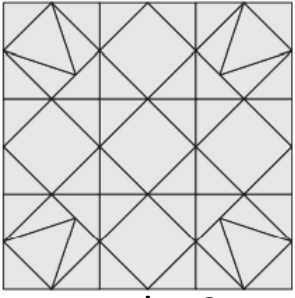
Mix & Match

Made using Studio 180 Design's V Block®
and Square Squared® Half Inch tools.



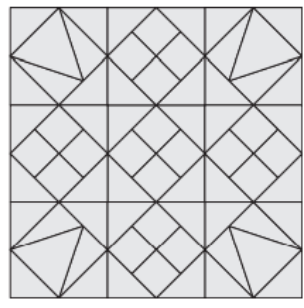
BlockBusters 2020 #48
Difficulty: ★★★★★

Block 1
V Blocks

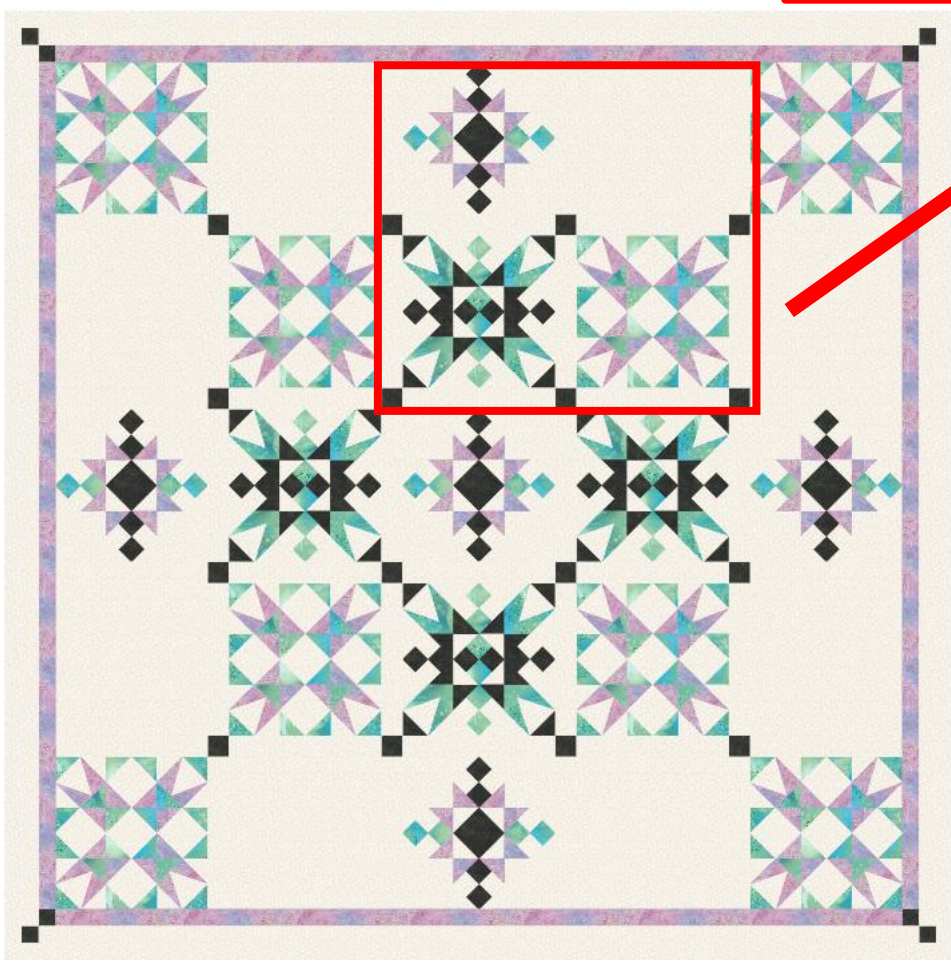
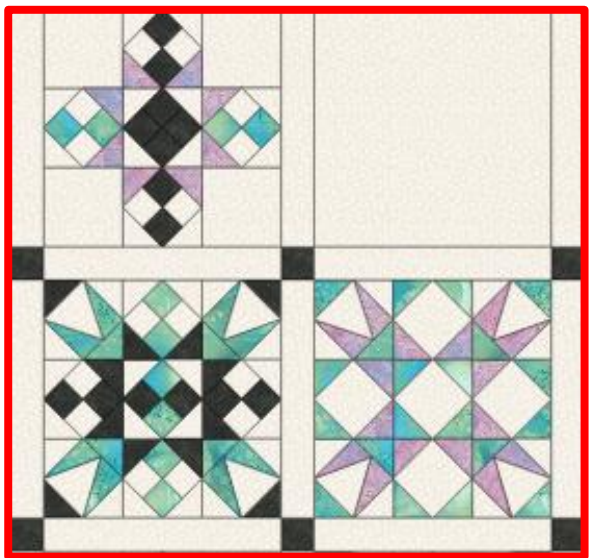


Make 8

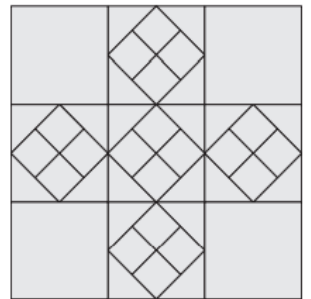
Block 2
V Blocks and Four Patches



Make 4



Block 3
Four Patches and Plain Squares



Make 4

#57



Created by Sarah Furrer
Studio180Design.Net

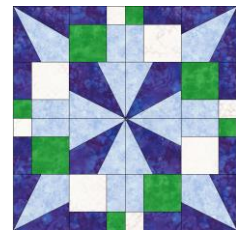
BlockBusters

Beacon

Made using Studio 180 Design's Corner Beam® and
Four Patch Square Up® tools and Offset Four
Patch Technique Sheet



BlockBusters 2021 #57
Difficulty: ★★★★★



Traditional Layouts with
sashing – Continue the corner
stones into the border

