

MOLD-A-RAMA (moldarama) machine made in 1964 by Mold-A-Rama, Inc. for New York World's Fair, and Seattle World's Fair in 1962, is restored to its original glory to reissue souvenirs last seen half a century ago. MOLD-A-RAMA machine made in 1964 by Mold-A-Rama, Inc. for New York World's Fair, and Seattle World's Fair in 1962, is restored to its original glory to reissue souvenirs last seen half a century ago.

MOLDVILLE.com

Experience the souvenir fun of the 60s & 70s again, for the first time...

(MOLDVILLE is not affiliated with **Mold-A-Rama, Inc.** of Chicago, IL nor with the 1960s company **Mold-A-Rama, Inc.** of Los Angeles, original operator of the "Disneyland Toy Factory.")

Website last updated: 04-18-2016

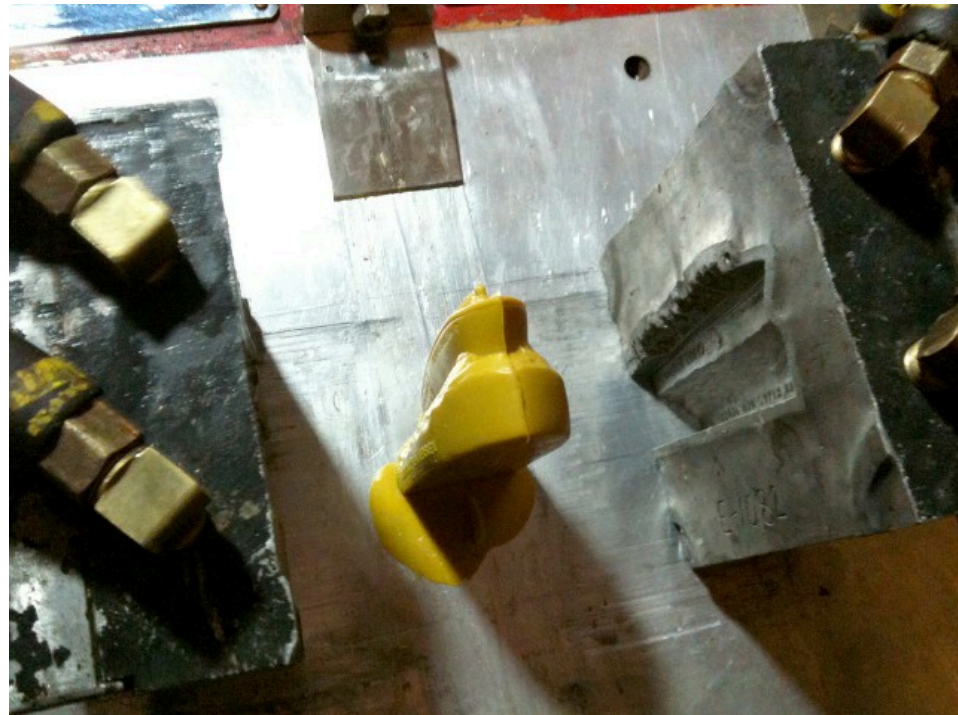


Club-A-Rama Week 1:

FLYING SAUCER PT-BOAT

1963, Chris' Restaurant, Ocean City, NJ







I was contacted by a gentleman whose parents had a home in Ocean City from 1955-1986, and who actually remembers the Mold-A-Rama machine at Chris' Restaurant! And not only that, he and his siblings each have (or at least had) an original of this MOLD! We're hoping to obtain an image of it (his has crumbled but he retained the pieces), but in the meantime he says his was a DARKISH BROWN, was sold at Chris' in the early 60s, and probably cost about a quarter. He recalls the Mold-A-Rama machine was outside in the dock area, but under cover, certainly not inside the restaurant because he never went inside. He thinks perhaps it was in front of the large white wooden building (staff only), which was behind the dock area near the Flying Cloud's and Flying Saucer's berths.

This same gentleman who has kept his mold of Chris Restaurant PT-BOAT all these years describes the experience of riding the FLYING SAUCER PT-BOAT as one of the most transformative experiences of his life. He said he used to watch for it every day from the beach at 35th St., and on windy days it looked like an enormous geyser at sea. There was this huge white explosion, and the boat would literally disappear inside it when Chris made his turn toward the beach. Being on it: he says that was the ultimate thrill, as it would lift at high speed over a 10-15 foot swell and come crashing down into the next one with spray (often heavy) flying everywhere. There were times when the front appeared to dip below the tip of the next wave, but the boat's speed and power kept it moving forward. He used to prefer the front row for the view, and loved to watch Chris pilot it. Even Chris would duck when the FLYING SAUCER PT-BOAT would pitch forward and was obviously about to soak everyone on board. Of course the back of the boat was wetter than the front, but there were rides when, even in the front, you got totally soaked on every wave - just buckets and buckets of water. He still marvels that passengers were allowed, even expected, to sit on the backs of the seats and hold on to the railing behind them. Many was the time you felt you were holding on for dear life, as the pitching could approach violent.

Chris' FLYING SAUCER PT-BOAT must have been one heck of a ride, for sure!



Come on down to the 9th street dock, in Ocean City, NJ, but don't forget to set your time machine dial back to the early '60s!



Chris' Restaurant 1966. (These and some other photos courtesy ElectroSpark.)



The tables might be full (it IS a very popular spot this time of year). So you better wait in the entrance area and we'll call you when ready! (This photo from 1964, and some other photos, courtesy Ken Struthers.)

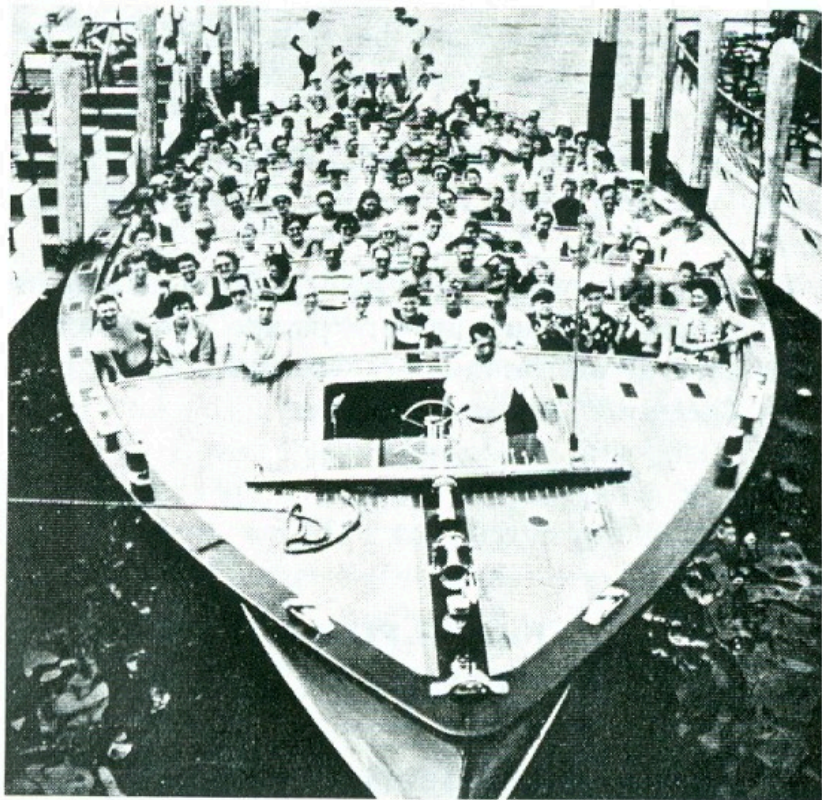


And after dinner, go out to the dock where you'll find the thrill of a lifetime...

GOOD FOR FREE TRIP
ONE PERSON — ANY TIME

Flying Saucer
Flying Cloud
Flying Pony

Leaves 3:00 and 7:30 P. M.
CHRIS' DOCK Ninth and Bay

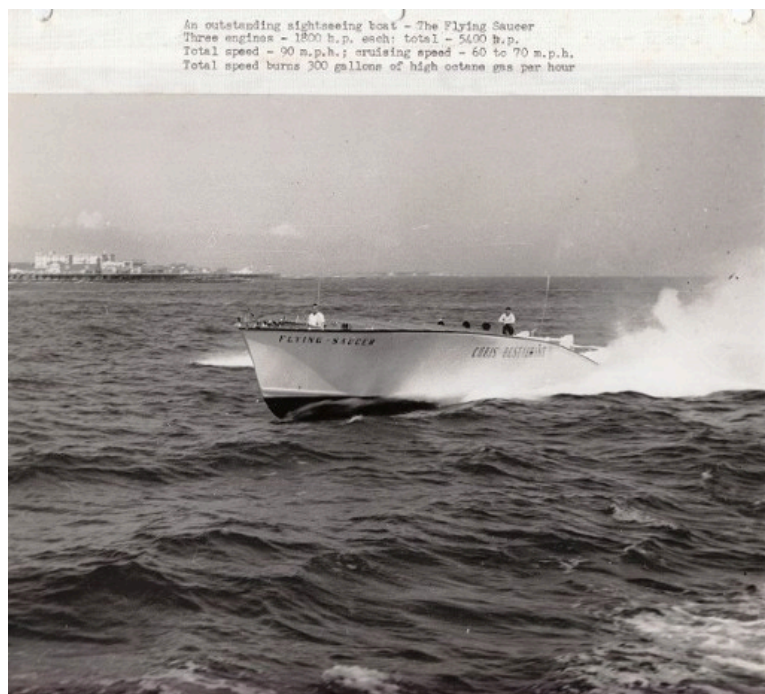


About to shove off with a load of paying guests on a converted Tri-engine P.T. boat.

This fantastic footage of the actual FLYING SAUCER running from the dock at Chris' Restaurant in Ocean City, NJ in the mid-60s comes courtesy of Ken Struthers. Buy your ticket, hop onto the retro-fitted WWII PT-boat, and HANG ON as Chris himself pilots you on a ride that goes as fast as 90 mph! Afterwards, don't forget to wait in line for your souvenir plastic MOLD of the FLYING SAUCER (and see if you can pick out Chris himself in the mold!)



It's been said that few people on the ride actually sat on the seats - most leaned on the seat like the people in the back of this photo. Love the glasses!!





The last image courtesy Art Haberland. Other images courtesy Ken Struthers and ElectroSpark. Thank you all!







This is (what remains of) an original FLYING SAUCER BOAT after an ebay seller shipped it to me. These figures from Mold-A-Rama machines in the 1960s are quite delicate, as you can see. The copper color is quite interesting though! I bought some clear glue and tried to piece together what I could of the original **FLYING SAUCER** to get an idea as to what it looked like:





Disclaimers: The color and/or exact condition of the MOLD you get in the CLUB-A-RAMA may or may not be as shown. Not for children under 3.

If YOU would like to own this very moldset (and perhaps even include a fully operating MOLDVILLE machine to go with it) so you can reissue your own souvenirs from 50 years ago, please email MoldvilleMachine@gmail.com TODAY - before someone else beats you to it!

[Home](#) | [Disneyland TOY FACTORY](#) | [VOICE-O-GRAPH Record Booth](#) | [That 1960's SMELL!](#) | [CLUB-A-RAMA v1.0](#) | [01: Flying Saucer boat](#) | [02: Empire State Building](#) | [03: HOTEL](#) | [04: Beach Girl](#) | [05: Space Needle](#) | [06: Lion](#) | [07: Clock of Nations](#) | [08: Frankenstein Bank](#) | [09: snowman](#) | [10: Gateway Arch](#) | [11: Canadian maple leaf EXPO '67 centennial](#) | [12: Grizzly Bear](#) | [13: MGM Flipper](#) | [14: Diving Horse](#) | [15: Kewpie Doll](#) | [16: capt. starn's sailboat](#) | [17: glowing angel](#) | [18: flying reindeer](#) | [19: alweg monorail](#) | [20: Carolina Snowball](#) | [21: tour eiffel](#) | [22: small gorilla](#) | [23: ENCO watchdog](#) | [24: Lincoln bust](#) | [25: mercury space capsule](#) | [26: friendship airport](#) | [27: Hollywood Bowl](#) | [28: bowling pin & card](#) | [29: unisphere](#) | [30: small elephant](#) | [31: grauman's chinese theatre](#) | [32: troll bank](#) | [33: century 21 exposition](#) | [34: glow sailfish](#) | [35: buddha Hollywood](#) | [36: golden gate bridge](#) | [37: Playland's Fun-Tier Town](#) | [38: Pleasure Island Moby Dick Hunt](#) | [39: Donkey](#) | [40: Marineland Skytower](#) | [41: RCMP](#) | [42: trolley car](#) | [43: pumpkin](#) | [44: liberty bell](#) | [45: kennedy bust](#) | [46: hms bounty](#) | [47: ankylosaurus](#) | [48: bowling pin](#) | [49: octopus](#) | [50: ben franklin](#) | [51: skull](#) | [52: lawrence welk](#) | [53: 3monkees \(no base\)](#) | [CLUB-A-RAMA v2.0](#) | [MILLER ALIEN Purple People Eater](#) | [The MOLD-A-RAMA Machine](#) | [History](#) | [1964 NY WORLDS FAIR questions answered!](#) | [Moldville RetroWax \(TM\)](#) | [Moldville MillerWax \(TM\)](#) | [FOR SALE: Vintage MOLD machine](#) | [Contact Us](#)