

MOLDVILLE.com

Experience the souvenir fun of the 60s & 70s again, for the first time...

(MOLDVILLE is not affiliated with **Mold-A-Rama, Inc.** of Chicago, IL nor with the 1960s company **Mold-A-Rama, Inc.** of Los Angeles, original operator of the "Disneyland Toy Factory.")

Website last updated: 04-18-2016



Club-A-Rama Week 8:



1963



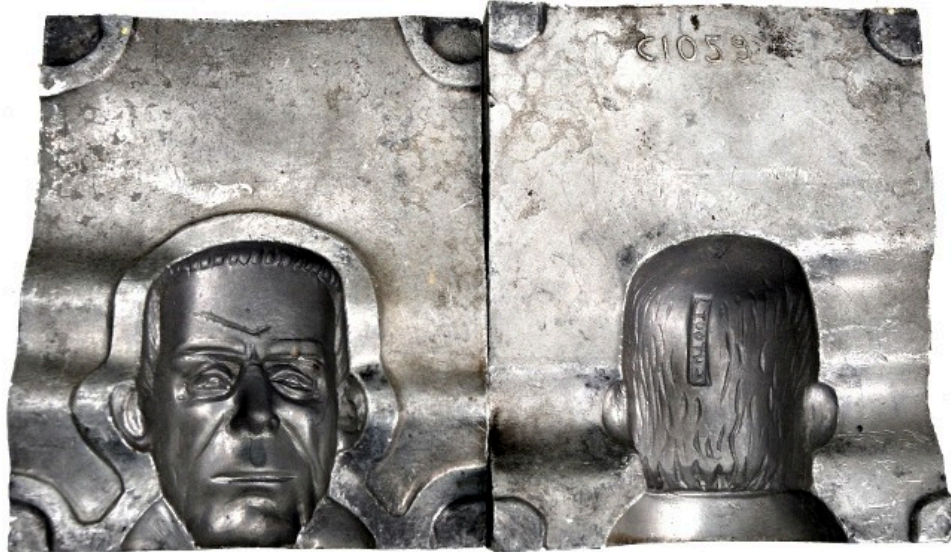


1960s UNIVERSAL STUDIOS, Los Angeles, CA



Here's a closeup of the coin entry plate seen in the vintage photo from Universal Studios.

Also, here's a closeup of the only known surviving BOTTOMS UP card, just like the one seen on the lower right corner of the deck of the MOLD machine in the vintage photo from Universal Studios.



Don't forget to "CUT OUT" the coin slot to make it into a bank (if you so desire)!



1990(circa) UNIVERSAL STUDIOS, Los Angeles, CA

The Frankenstein vended from this custom-made MOLD machine was the standing Frankenstein (not the Frankenstein Bank that is this week's figure) but I thought it would be fun to share this photo from Universal Studios anyway.

Disclaimers: The color and/or exact condition of the MOLD you get in the CLUB-A-RAMA may or may not be as shown. Not for children under 3.

Please visit the facebook page called 'Moldville', and 'LIKE' it, to keep up to date:
<http://www.facebook.com/pages/MOLDVILLE/156515454416041?success=1>

If YOU would like to own this very moldset (and perhaps even include a fully operating MOLDVILLE machine to go with it) so you can reissue your own souvenirs from 50 years ago, please email MoldvilleMachine@gmail.com TODAY - before someone else beats you to it!

[Home](#) | [Disneyland TOY FACTORY](#) | [VOICE-O-GRAPH Record Booth](#) | [That 1960's SMELL!](#) | [CLUB-A-RAMA v1.0](#) | [01: Flying Saucer boat](#) | [02: Empire State Building](#) | [03: HOTEL](#) | [04: Beach Girl](#) | [05: Space Needle](#) | [06: Lion](#) | [07: Clock of Nations](#) | [08: Frankenstein Bank](#) | [09: snowman](#) | [10: Gateway Arch](#) | [11: Canadian maple leaf EXPO '67 centennial](#) | [12: Grizzly Bear](#) | [13: MGM Flipper](#) | [14: Diving Horse](#) | [15: Kewpie Doll](#) | [16: capt. starn's sailboat](#) | [17: glowing angel](#) | [18: flying reindeer](#) | [19: alweg monorail](#) | [20: Carolina Snowball](#) | [21: tour eiffel](#) | [22: small gorilla](#) | [23: ENCO watchdog](#) | [24: Lincoln bust](#) | [25: mercury space capsule](#) | [26: friendship airport](#) | [27: Hollywood Bowl](#) | [28: bowling pin & card](#) | [29: unisphere](#) | [30: small elephant](#) | [31: grauman's chinese theatre](#) | [32: troll bank](#) | [33: century 21 exposition](#) | [34: glow sailfish](#) | [35: buddha Hollywood](#) | [36: golden gate bridge](#) | [37: Playland's Fun-Tier Town](#) | [38: Pleasure Island Moby Dick Hunt](#) | [39: Donkey](#) | [40: Marineland Skytower](#) | [41: RCMP](#) | [42: trolley car](#) | [43: pumpkin](#) | [44: liberty bell](#) | [45: kennedy bust](#) | [46: hms bounty](#) | [47: ankylosaurus](#) | [48: bowling pin](#) | [49: octopus](#) | [50: ben franklin](#) | [51: skull](#) | [52: lawrence welk](#) | [53: 3monkees \(no base\)](#) | [CLUB-A-RAMA v2.0](#) | [MILLER ALIEN Purple People Eater](#) | [The MOLD-A-RAMA Machine](#) | [History](#) | [1964 NY WORLDS FAIR questions answered!](#) | [Moldville RetroWax \(TM\)](#) | [Moldville MillerWax \(TM\)](#) | [FOR SALE: Vintage MOLD machine](#) | [Contact Us](#)